



Contents

Record sounds, dictation, and more with voice-activated RecAll.

[Getting Started](#)

[Controls](#)

[Menu Commands](#)

[Troubleshooting](#)

[Application Examples](#)

[Registration](#)

[More Neat Stuff](#)

Getting Started

Go ahead and try out RecAll by clicking on the Listen/Record button. If the meter registers significant output when you talk into the mike, but is close to zero when you are silent, you're all set! Otherwise, refer to the procedure detailed under [Troubleshooting](#). Many people do not use a microphone regularly with their computer, and do not realize that their sound card is not currently set up correctly for microphone input.

Now you can experiment with setting the sound-activation threshold to the appropriate loudness.. You may need to experiment with different microphones, location of microphone, and sound card mixer settings to get satisfactory results. Don't get discouraged if you have troubles initially. Your set-up may take a bit of experimentation to get working just right, but the results are rewarding.

Time Stamps

Now try recording a longer file, and then play it back. Notice that sounds have a time-stamp, which is displayed during play-back. When sound goes below the recording threshold for a few seconds, RecAll stops recording. When sound is detected again, a new recording Segment is started with a new time-stamp.

It is easy to move within the recorded sound file by using a combination of the Position slider and Rewind and Fast-Forward buttons.

Wave Files

RecAll sound files are regular .WAV files, but with extra time-stamp information. RecAll .WAV files may be played by other sound players, such as Windows Media Player, but the time-stamp information will be ignored by these other programs.

Options

After you have become familiar with the main window controls, click on the Options menu and experiment with other controls. You can control the maximum size of the recording file, the default sampling rate, and many other features.

[Application Examples](#)

Application Examples

Here are some ideas for using this program.

Radio Scanner

RecAll may be used with a radio scanner to record signals for delayed listening. The time-stamp and position slider features allow easy navigation within the saved sound file, and the file size limit is useful for

Dictation

Dictate without worrying about pauses-- RecAll will remove the silence for faster transcription.

Notes

Record notes, ideas, and transactions at your computer hands free.

Controls

Main Window

[Level](#)

[Meter](#)

[Segment](#)

[Rate](#)

[Resolution](#)

[Size](#)

[Position](#)

[Listen](#)

[Play](#)

[Rewind](#)

[Stop](#)

[Fast Forward](#)

Options-> Wave

[Default Sampling Rate](#)

[Resolution](#)

[Default Byte Rate](#)

Options-> File

[Default path](#)

[Browse](#)

[Automatic File Naming](#)

[File name prefix](#)

[Prompt for Category](#)

[Recording file size limit](#)

[At file limit](#)

[Total recording time](#)

Options-> Start

[Minimize at start-up](#)

[Listen at start-up](#)

Options-> Record

[Manual](#)

[Echo](#)

[New file after quiet](#)

Options-> Playback

[SoundByte mode](#)

Sets the sound intensity threshold at which recording starts.

Displays the peak sound intensity. Assists the user in setting the optimum sound threshold level, to reliably detect and start recording desired sounds without false triggering from other noise.

Displays the data segment number at the current position.

Shows the current sample rate (samples/second) for the sound input/output channel.

Shows current sampling resolution of sound data.

Total current size of sound data file, in MegaBytes.

Controls and displays current position within the sound file.

Start sound monitoring/recording.

Start playing sound.

Double-click to start playing in SoundByte mode.

Go to previous sound segment, or beginning of sound segment.

Stop playing or recording.

Move to next sound segment.

Set default sample resolution.

Shows file storage requirements at current sampling rate and resolution.

Default file directory for storing sound files.

Select default file directory.

Automatically determine name of sound file.

This mode is useful when combined with Record->New file mode, for automatically starting a new file without prompting for a file name.

In Automatic File Naming mode, begin file name with this text.

Allows user to select from a list of Categories, which is then used to define the file name.

This is useful for applications such as a telephone log, where the user stores a recording by category based on customer initials, subject of conversation, etc.

Set maximum size limit for sound file recording.

Controls what happens when the recording file reaches its pre-defined size limit. Recording may be terminated, or the file may be re-wound and started again, or no action may be taken (equivalent to no file limit).

Displays total recording time at current file size limit, using default sampling rate and resolution.

Start application as an icon.

Start listening as soon as program starts.

User must start and stop files.

At the end of the segment (when silence is detected) the sound is automatically played again. No file is saved.

This mode is useful for practicing speech, foreign language pronunciation, and vocal music.

Begin new file after a pre-defined length of silence.

This mode is useful for users that prefer several small files instead of one big file. To use in unattended operation, may be combined with Automatic File Naming.

Menu Commands

File

[New](#)

[Open](#)

[Save](#)

[Save As](#)

[Save setup](#)

[Exit](#)

Options

[Preferences](#)

Help

[Contents](#)

[Using help](#)

[Register](#)

[About](#)

Close current file and begin new file.

Open an existing sound file.

Save current file.

Save current file with a new file name.

Saves the current set-up and exits the application.

Display setup dialog.

Display contents of help file.

Show how to use on-line help.

Describe how to register for this program.

Show dialog with general information about the application.

Troubleshooting

Why doesn't the program hear any sound?

Your sound card has a microphone input for storing sound data. Many users tend not to use this feature very often, so one may need to make some initial adjustments in your set-up to get good results.

If the sound meter doesn't register any movement when the Listen button is activated, here are some things to check:

- 1 Examine your Mixer settings.

In Win95, go into the mixer by double-clicking on the speaker icon on the taskbar, typically at the bottom-right of your computer screen. If your Win95 taskbar does not have a speaker icon, click on Start->Programs->Accessories->Multimedia->Volume_Control. If microphone controls do not appear in the Mixer, go into the Options menu and make the appropriate changes. Make sure the Microphone Volume is not too low, and Microphone is not muted.

With Win3.1, use the "Mixer" utility that may come with your sound card.

You may have to make some adjustments with this program to optimize the sensitivity of the microphone input.

- 2 Exit the RecAll program. Go into another sound record program, such as Windows Sound Recorder. (In Win95, click on Start->Program->Accessories->Multimedia->Sound Recorder. In Win3.1 look in the Accessories program group.) Run this utility and record and then play back sounds.
- 3 Is the microphone really plugged in to the correct jack? Since most people use the sound input infrequently, this is a common problem.
- 4 Refer to your sound card documentation. Some sound cards have special set-up programs, or jumpers that may require changing.
- 5 Make sure another program is not already using wave sound. Many sound cards are not full duplex-- that is, they can not record and play wave sounds at the same time, so look for programs that might be using wave sound output as well as input.

I get sound, but just barely. The meter barely moves

- 1 Try adjusting the mixer settings, as described above.
- 2 Get a good microphone. Some microphones bundled with multimedia packages are not adequately sensitive. A good inexpensive dynamic microphone may be purchased at a stereo store for less than the cost of this program. Choose a microphone with maximum sensitivity, and an impedance compatible with your sound card.

Registration and Support

If you have already paid for any version of this program, and need a registration code for future updates, go to [UPDATES](#).

If you have not purchased this program, you may use RecAll for 30 days. If you wish to use this product beyond the 30 day trial period, you must register.

[License agreement](#)

[HOW TO PURCHASE](#)

Purchasing RecAll gives these benefits:

- You will receive a registration code, by e-mail if possible, which will instantly convert your program into Registered Mode, disabling all registration reminder features. This registration code will be good for several updates, so you can easily continue to obtain improved versions of the program via the Internet or other distribution channels. The latest versions of our programs may always be found at <http://www.sagebrush.com/~sells/>
- You will receive the latest and greatest version of this program, if needed.
- Several free updates for Windows95 versions of this program. (Modest shipping charge if needed.)
- Several free updates for Windows 3.1 releases of this program. (Modest shipping charge if needed.)
- Free mail support, and free e-mail support at sells@sagebrush.com .
- E-mail upgrade announcements and new product announcements.
- Registration is the right thing to do. Registering allows us to continue upgrades to the program and introduce new products.

Questions?

If you have any questions, feel free to contact us at sells@sagebrush.com or our postal address: Sagebrush Systems, Inc., PO Box 3094, Corrales, NM USA 87048, or visit our Web site at <http://www.sagebrush.com/~sells/>

License Agreement

Copyright 1996 Sagebrush Systems, Inc.

All rights reserved.

INSTALLATION OF RECALL ON YOUR COMPUTER SYSTEM IMPLIES AGREEMENT WITH THE TERMS AND CONDITIONS BELOW.

DISTRIBUTION OF RECALL, ITS ACCOMPANYING PROGRAMS AND DOCUMENTATION IS CONSIDERED AS IS. SAGEBRUSH SYSTEMS, INC. OFFERS NO WARRANTIES OF ANY KIND, EXPRESSED OR IMPLIED. THIS INCLUDES, BUT IS NOT LIMITED TO, WARRANTIES OF MERCHANTABILITY OR FITNESS FOR A PARTICULAR PURPOSE. UNDER NO CIRCUMSTANCES WILL SAGEBRUSH SYSTEMS, INC. BE LIABLE FOR ANY DAMAGES WHICH RESULT FROM THE USE OF THIS PROGRAM OR THE INABILITY TO USE IT. EXCLUSION FROM LIABILITY INCLUDES, BUT IS NOT LIMITED TO, LOST PROFITS, LOST SAVINGS, OR ANY OTHER INCIDENTAL OR CONSEQUENTIAL DAMAGES.

THIS AGREEMENT SHALL BE GOVERNED BY THE LAWS OF THE STATE OF NEW MEXICO.

RecAll is not free, public domain, or freeware. If you have not already purchased this program, you must register within 30 days of use and pay the applicable fee.

How to Purchase This Program

RecAll costs \$14.95 US (base price, standard edition). We offer these ways to purchase:

Check or Postal Money Order-- Mail

Send a check or money order by mail. We really appreciate when our customers use this order method, as it keeps our overhead costs low so we can continue to offer quality products at a low price. We do not charge a shipping or handling fee to U.S. customers using this this method of payment.

International postal money orders are a convenient payment method for our valued non-USA. customers.

[Print registration form.](#)

Credit Card-- Internet

If you are comfortable with purchasing on the Internet, point your Web browser to <http://www.sagebrush.com/~sells/>

A secure Web server is available for handling your credit card transaction.

Credit Card-- 800 number

You can order with MasterCard, Visa, American Express, or Discover from PsL, Public (software) Library, by calling 800-2424-PsL or 713-524-6394 during weekday business hours, or by FAX to 713-524-6398 or by CIS Email to 71355,470. You can also mail credit card orders to PsL at P.O Box 35705, Houston, TX 77235-5705. THESE NUMBERS ARE FOR ORDERS ONLY!!!! Any questions about the status of shipment of the order, refunds, registration options, product details, technical support, volume discounts, dealer pricing, etc., must be directed to Sagebrush Systems, P.O Box 3094, Corrales, NM 87048, sells@sagebrush.com. To insure that you get the latest version, PsL will notify us the day of your order and we will ship the product or registration code directly to you. The price using this method of ordering is \$14.95 + \$2.00 handling = \$16.95 total.

Refer to item number #14936. Please use the item number when ordering, to avoid any possible confusion.

Retail

Sagebrush programs may be available in retail stores in some areas, sometimes bundled with other software or hardware.

Questions?

If you have any questions, feel free to contact us at sells@sagebrush.com or our postal address: Sagebrush Systems, Inc., PO Box 3094, Corrales, NM USA 87048, or visit our Web site at <http://www.sagebrush.com/~sells/>

What You Get

When you purchase this program, here is the registration benefits you receive:

[Registration](#)

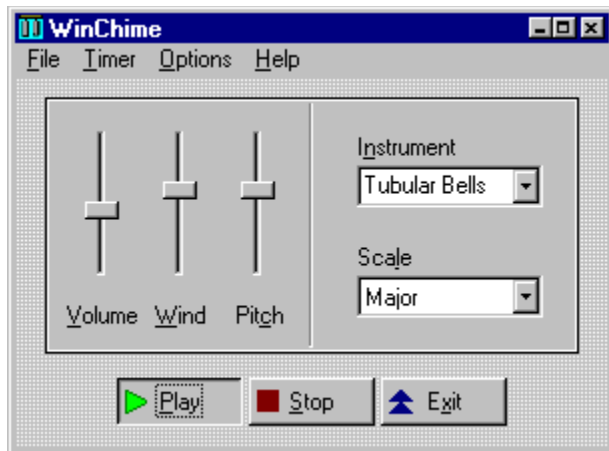
More Neat Stuff

If you like this program (or even if you don't), be sure to check out these other software titles from Sagebrush Systems! Programs are available from our Web site at <http://www.sagebrush.com/~sells/> and from ftp sites such as <ftp.winsite.com> and <ftp.simtel.net>



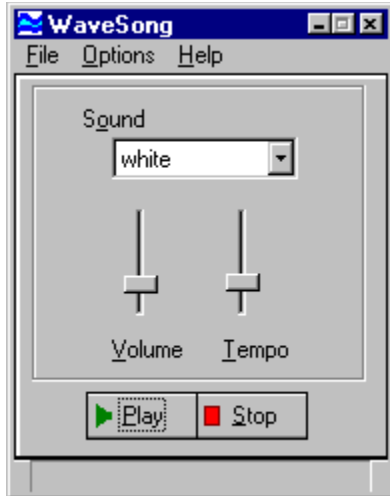
WinChime for Win95 and Windows 3.1

Relax to the peaceful sounds of wind chimes, as simulated with the MIDI capabilities of your sound card. Sound parameters are easily changed to fit your particular mood. A built-in timer can control on and off events to keep sounds interesting. This is a gentle way to mask out unwanted noise in the home or office. Requires Windows 3.1



WaveSong for Win95 and Windows 3.1

Relax to the sounds of thunder, crickets, waves, and rain. WaveSong is a nature-sound generator program for Windows, using the digital sound channel capabilities of your sound card and processing techniques to produce nature sounds. This program could be used to mask out unwanted environmental noise and promote relaxation and concentration. Controls for Volume and Tempo allow the listener to tailor sound output to individual preferences.



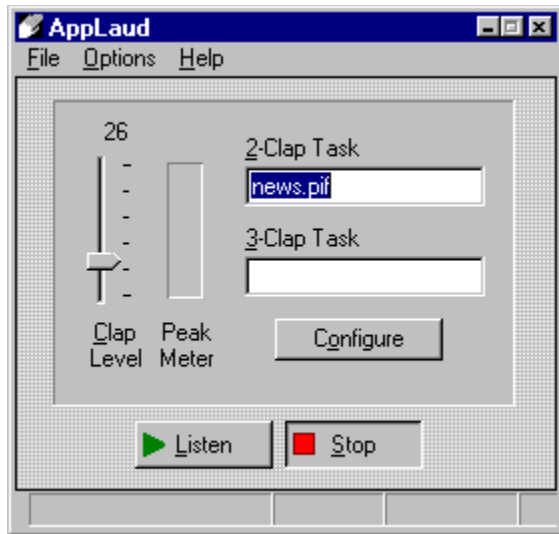
MouSing for Windows 3.1 and Windows95

Create eerie sounds by moving your mouse. This program is similar to a musical instrument called a Theremin, which responds to the musician's hand movements in the air near the instrument, but instead of detecting hand movements, we use a mouse. Movement in one direction changes pitch, and in another direction volume



AppLaud for Win95 and Windows 3.1

Impress your friends! Turn your sophisticated multimedia computer into one of those gadgets-that-turn-things-on-and-off-by-clapping-your-hands. Applaud runs in the background, monitoring your sound card microphone input and detecting the noise signature of clapping. Different programs can be launched for two-clap and three-clap signals. Sound card with Automatic Gain Control (AGC) microphone input strongly recommended.



More great programs appearing soon!

We are currently developing more software applications for Windows 95 and Windows 3.1.

For you Internet surfers, a WEB page is available at

<http://www.sagebrush.com/~sells/>

or you can email

sells@sagebrush.com

to request for more details. Or better yet, register this software and get our latest product catalog and request to be on our e-mail or mail list for new announcements!

Default sampling rate (samples/second) for new sound files.

Save current settings now.

Recording will stop at file size limit.

Show what formats are supported by Wave Device.

Show Help for this dialog.

Display information on purchasing this program.

No action at file size limit.
File size limit is ignored.

Keep application window on top.

Set maximum size limit for wave file recording.

Set default sample resolution to 16 bits.

Set default sample resolution to 8 bits.

File will automatically rewind at file size limit, and continue recording.

samptext

Display Preferences setup dialog.

Number of seconds played at beginning of each sound segment in SoundByte mode.

Enter SoundByte mode by double-clicking on the Play button, instead of single-clicking.

Use SoundByte mode to quickly scan large sound files for the desired segment.

Status line shows modes and operating state.

Amount of quiet-time in seconds before starting a new file, in New File Recording Mode.

Shows time when sound data was recorded.

Shows total recording time of current wave data file.

RecAll v2.x/v1.x Registration form

Mail to:
code20

Sagebrush Systems
P.O. Box 3094
Corrales, NM 87048

Name

Address

City, State ZIP Country

Phone Number Internet Address

Where did you obtain your copy of this program? (Please be specific, so we can insure all our distribution sources have the latest version. If you found this program by our Web page, how did you find our Web page?)

- _____
Yes, please notify me of major new releases. (Check if applicable.)
- _____
Yes, please notify me of new Sagebrush Systems products. (Check if desired.)
- _____
I don't have Internet access. If this is not the latest version, please send it.
- _____
3.5" double density floppy
- _____
5 1/4" double-sided double density floppy

Mark payment type:

- _____
Check (drawn on a U.S. bank in U.S. funds)
- _____
American Express money order in U.S. funds
- _____
International Postal Money Order in U.S. currency
(available at post offices world-wide)

Quantity _____ x \$14.95 \$_____

NM residents add \$1.03 gross receipts tax \$_____

TOTAL \$_____

On the back of this form, please feel free to write down any comments, suggestions for improvements, bug reports, kudos, and questions.

Thank you for your order!!!!!!!!!!

Updates for Previous Purchasers

If you have already paid for this product (either directly from Sagebrush, by retail purchase, or bundled with a hardware purchase) :

Thank you!

You may continue to obtain several updates to the software by getting a Registration Code. This code allows you to use future versions of the program, available on the Internet or other distribution channels, without being bothered by registration reminder screens. The latest program version is always available on the World Wide Web, at <http://www.sagebrush.com/~sells/>

We have chosen the Registration Code method for updating programs, rather than sending out new Registered Program Disks for every major update, for your convenience, to keep shipping costs down and to reduce delays.

How to get a Registration Code

If you obtained this program by retail purchase, mail in the registration card, with your Serial Number, and we will send your code. Non-USA customers allow several weeks delay.

Alternatively, e-mail sells@sagebrush.com with your name, address, program name, program Serial Number, version number, date and store purchased.

Or, if necessary, send the above information by mail to Sagebrush Systems, PO Box 3094, Corrales, NM (USA) 87048.

If you purchased an earlier version of this program directly from Sagebrush, you won't have a serial code, but send the other information.

Application Examples

<Getting_Started>

Clap Recognition

<Clap Recognition>

Full Duplex
<Full Duplex>

Print registration form
<Registration_form>

Recorder Techniques

<Recorder_Techniques>

Task Control
<Task_Control>

Troubleshooting
<Troubleshooting>

UPDATES
<Updates>

