



# ArchiveBUDDY

Copyright © 1994 by Lenard Dean

## ***Archiving Made Simple***

### **Introduction**

[ArchiveBUDDY Overview](#)

[Registration Information](#)

[Contacting The Author](#)

[Software Warranty](#)

[Trademarks](#)

### **Getting Started**

[Configuring ArchiveBUDDY](#)

### **Using ArchiveBUDDY**

[DOS File Directory](#)

[Archive File Directory](#)

[Working With Text Files](#)

[Working With Archive Files](#)

### **Questions And Answers**

[Answers To Common Questions](#)

[Running ArchiveBUDDY On A Network](#)

[Uninstalling ArchiveBUDDY](#)

# Introduction

## ArchiveBUDDY Overview

ArchiveBUDDY is an easy to use "front-end" Windows utility for viewing and manipulating various archive formats. If you do alot of "BBSing", you should find ArchiveBUDDY very handy. Features include:

- n Support for ARC, ARJ, LZH, PAK, and ZIP archivers
- n View archives nested 5 levels deep.
- n Archive files (and directories\*).
- n Extract archived files (and directories\*).
- n Delete archived files.
- n Support for password-protected archives.
- n View text files of any size.

\* only with ARJ and PKZIP.

# Introduction

## Registration Information

### [Registration Form](#)

ArchiveBUDDY is being distributed as SHAREWARE. This method of distribution means that you may evaluate the program for a reasonable period of time, normally 30 days. (In my case, I'll leave the "reasonable" part up to you.) If you find ArchiveBUDDY meets your current needs, please register your copy.

The registration fee for ArchiveBUDDY is only \$15 US and applies to all future releases of ArchiveBUDDY. (If you are interested in a site license, please contact me.) When you register, you will receive the latest version of ArchiveBUDDY. Since there is no difference between the Shareware and Registered version, you are free to upgrade as new versions are released.

Money orders or personal, certified, and traveller's checks are accepted. If you are paying by personal check, payment does not necessarily have to be in US funds. Local currency is acceptable as long as the amount is equivalent to the amount in US dollars. Check with your bank for the current exchange rate "for you to buy" US dollars. If you are ordering outside North America, please don't forget to add \$3.00 US for shipping.

Thank you for your support.

NOTE: To print ArchiveBUDDY's registration form:

1. Double-click on "Registration Form".
2. Select File (from the menu bar).
3. Select Print Topic

### ***Please Note:***

If you are a FileBUDDY registered user, you DO NOT have to register ArchiveBUDDY. It's free!

ArchiveBUDDY Order Form

Name: \_\_\_\_\_

Address: \_\_\_\_\_

\_\_\_\_\_

\_\_\_\_\_

\_\_\_\_\_

Electronic Service User IDs (ie. CompuServe/Internet/MCI Mail):

\_\_\_\_\_

Where did you obtain ArchiveBUDDY?

\_\_\_\_\_

Comments? \_\_\_\_\_ (over)

\_\_\_\_\_ Copy(s) of ArchiveBUDDY ..... @ \$15.00 \$ \_\_\_\_\_  
(Manual and Disk)

North America Shipping and Handling ..... @ \$ 0.00 \$ \_\_\_\_\_  
(per copy)

Overseas Shipping and Handling ..... @ \$ 3.00 \$ \_\_\_\_\_  
(per copy)

Registered Mail, add an ADDITIONAL ..... @ \$ 3.50 \$ \_\_\_\_\_  
(per copy) (OPTIONAL)

Total (US) \$ \_\_\_\_\_

Media: [ ] 5.25" [ ] 3.5"

Send the registration form and payment to:

Lenard Dean  
Box 73094, Woodbine Postal Outlet  
Calgary, Alberta T2W6E0  
CANADA

-----  
recv:                    sent:                    ver:                    dlv: 1.00  
-----

# Introduction

## Contacting The Author

If you are experiencing any problems with ArchiveBUDDY or have a suggestion or criticism you'd like to make, please write to me. I would like to hear from you. Write to me at:

Lenard Dean  
Box 73094, Woodbine Postal Outlet  
Calgary, Alberta T2W6E0  
CANADA

You can also reach me on CompuServe at 70312,415. If you are an Internet user, use [70312.415@compuserve.com](mailto:70312.415@compuserve.com) to reach me.

Happy archiving!

# Introduction

## Software Warranty

Lenard Dean disclaims all warranties relating to this software, whether expressed or implied, including without limitation any implied warranties of merchantability or fitness for a particular purpose. Lenard Dean will not be liable for any special, incidental, consequential, indirect, or similar damages due to loss of data or any other reason, even if Lenard Dean or an agent of Lenard Dean has been advised of the possibility of such damages. In no event shall Lenard Dean's liability for any damages ever exceed the price paid for the license to use this software, regardless of the form of the claim. The person using this software bears all risk as to the quality and performance of the software.

# Introduction

## Trademarks

Product names mentioned in this documentation are trademarks or registered trademarks of their respective owners. ArchiveBUDDY is a trademark of Lenard Dean.

# Getting Started

## Configuring ArchiveBUDDY

If you are just starting out, you will need to configure ArchiveBUDDY using the SETUP command. Setup items are grouped into the following areas:

[GENERAL Settings](#)

[FONT Settings](#)

[ARCHIVE Settings](#)

[PROGRAM Settings](#)

[PATH Settings](#)

Please ensure the SHELL.PIF file is in the same directory as ArchiveBUDDY. The file is used by ArchiveBUDDY when shelling out to run an archiver. If SHELL.PIF cannot be located, the Windows \_DEFAULT.PIF file will be used (resulting in decreased program performance).



# Configuring ArchiveBUDDY

## GENERAL Settings

This section defines general setup information.

[Tab Spaces](#)

[Sort Directory](#)

[Select Text Mode](#)

[Color Buttons](#)

[Associate](#)

# Configuring ArchiveBUDDY

## GENERAL Settings

### *Tab Spaces*

Sets the number of blank characters to display for each tab character found in the file.

# Configuring ArchiveBUDDY

## GENERAL Settings

### *Sort Directory*

Determines how directory file names will be sorted:

- n Don't Sort
- n Name
- n Extension
- n Size
- n Date
- n Time

# Configuring ArchiveBUDDY

## GENERAL Settings

### *Select Text Mode*

Defines the internal text viewer's method for selecting text. Two techniques are available:

- n Lines
- n Columns (characters)

# Configuring ArchiveBUDDY

## GENERAL Settings

### *Color Buttons*

Determines whether the command buttons' label will be in color. Select "NO" if you are running Windows on a portable computer with a "black and white" display.

Please Note: Unlike the other settings, you must restart ArchiveBUDDY for "Color Buttons" to take effect.

# Configuring ArchiveBUDDY

## GENERAL Settings

### *Associate*

Links a file extension to a program. You can have up to 25 entries. For example:

```
hlp=c:\windows\winhelp.exe  
wri=c:\windows\write.exe  
ini=c:\windows\notepad.exe  
txt=c:\windows\notepad.exe
```

# Configuring ArchiveBUDDY

## FONT Settings

This section defines font setup information for ArchiveBUDDY's internal text viewer.

[Font Name](#)

[Font Size](#)

[Font Bold](#)

[Font Italic](#)

[Foreground Color](#)

[Background Color](#)

# Configuring ArchiveBUDDY

## FONT Settings

### *Font Name*

Selects the text viewer's font set.



# Configuring ArchiveBUDDY

## FONT Settings

### *Font Size*

Selects the text viewer's font size.

# Configuring ArchiveBUDDY

## FONT Settings

### *Font Bold*

Determines whether "Font Name" will be in bold format.

# Configuring ArchiveBUDDY

## FONT Settings

### *Font Italic*

Determines whether "Font Name" will be in italic format.

# Configuring ArchiveBUDDY

## FONT Settings

### *Foreground Color*

Sets the "Font Name" foreground color.

# Configuring ArchiveBUDDY

## FONT Settings

### *Background Color*

Sets the "Font Name" background color.

# Configuring ArchiveBUDDY

## ARCHIVE Settings

This section defines archive setup information.

[Other Archive Extensions](#)

# Configuring ArchiveBUDDY

## ARCHIVE Settings

### *Other Archive Extensions*

Lets you associate an archive file with a different extension name to an archiver. For example:

```
qwk=lzh  
inc=lzh  
sdn=arj  
bak=zip  
all=pak  
dif=arc
```

You can have up to 15 entries. Note that you can define more than one file to an archiver (as shown).

# Configuring ArchiveBUDDY

## PROGRAM Settings

This section defines the programs used by ArchiveBUDDY. When specifying program names, you MUST include the PATH and EXTENSION of the files or they will not be located (even if they are in your PATH statement). When specifying archive programs, only the following versions are recognized by ArchiveBUDDY:

ARC v6.00  
ARJ v2.10-v2.30  
LHA v1.14, v2.10-v2.13  
PAK v2.51  
PKZIP v1.10, v2.04

Previous or future versions of the archivers may or may not work. All you can do is try and see.

[Viewer](#)

[Editor](#)

[Clipboard](#)

[ARC Archiver](#)

[ARJ Archiver](#)

[LZH Archiver](#)

[PAK Archiver](#)

[ZIP Archiver](#)



# Configuring ArchiveBUDDY

## PROGRAM Settings

### *Viewer*

Defines your viewer program. Set it up like:

`c:\utils\viewer.exe`

If you want to use ArchiveBUDDY's internal viewer, leave this entry blank.

# Configuring ArchiveBUDDY

## PROGRAM Settings

### *Editor*

Defines a text editor for ArchiveBUDDY to use. Assuming your editor is called NOTEPAD.EXE and located in "c:\windows", you would set it up as:

```
c:\windows\notepad.exe
```

# Configuring ArchiveBUDDY

## PROGRAM Settings

### *Clipboard*

Defines Window's clipboard program. The default entry is:

`c:\windows\clipbrd.exe`

# Configuring ArchiveBUDDY

## PROGRAM Settings

### *ARC Archiver*

Defines the ARC archiver to use. Two types are recognized: ARC.EXE by SEA, and PAK.EXE by NoGate Consulting. Below are examples to set each up:

- n Assuming you want to use ARC.EXE for "ARC" files and the archiver is located in "c:\utils\arc", set it up like:

c:\utils\arc\arc.exe

- n Assuming you want to use PAK.EXE for "ARC" files and the archiver is located in "c:\utils\pak", set it up like:

c:\utils\pak\pak.exe

# Configuring ArchiveBUDDY

## PROGRAM Settings

### *ARJ Archiver*

Defines the ARJ archiver to use. One type is recognized: ARJ.EXE by Robert K. Jung. Assuming the archiver is located in "c:\utils\arj", set it up like:

```
c:\utils\arj\arj.exe
```

# Configuring ArchiveBUDDY

## PROGRAM Settings

### *LZH Archiver*

Defines the LZH archiver to use. One type is recognized: LHA.EXE by Haruyasu Yoshizaki. Assuming the archiver is located in "c:\utils\lha", set it up like:

```
c:\utils\lha\lha.exe
```

# Configuring ArchiveBUDDY

## PROGRAM Settings

### *PAK Archiver*

Defines the PAK archiver to use. One type is recognized: PAK.EXE by NoGate Consulting. Assuming the archiver is located in "c:\utils\pak", set it up like:

```
c:\utils\pak\pak.exe
```

# Configuring ArchiveBUDDY

## PROGRAM Settings

### *ZIP Archiver*

Defines the ZIP archiver to use. Two types are recognized: PKZIP.EXE by PKWare and PAK.EXE by NoGate Consulting. Below are examples to set each up:

- n Assuming you want to use PKZIP for "ZIP" files and the archiver is located in "c:\utils\pkzip", set it up like:

c:\utils\pkzip\pkzip.exe

- n Assuming you want to use PAK for "ZIP" files and the archiver is located in "c:\utils\pak", set it up like:

c:\utils\pak\pak.exe



# Configuring ArchiveBUDDY

## PATH Settings

This section defines the paths used by ArchiveBUDDY.

[Work Directory](#)

[Temporary Directory](#)

# Configuring ArchiveBUDDY

## PATH Settings

### *Work Directory*

Defines YOUR work directory path. For example:

c:\workdir

# Configuring ArchiveBUDDY

## PATH Settings

### *Temporary Directory*

Defines ArchiveBUDDY's temporary work directory path. By default, this entry will not have anything assigned to it creating the temporary work directory in ArchiveBUDDY's directory. If you want to define an alternate directory, set it up like one of the following:

e:  
e:\  
e:\temp

# Using ArchiveBUDDY

## DOS File Directory

[The DOS Directory Window](#)

[DOS Directory Command Buttons](#)

[Selecting Files](#)

[Changing Drives](#)

[Changing Directories](#)

[Deleting Files And Directories](#)

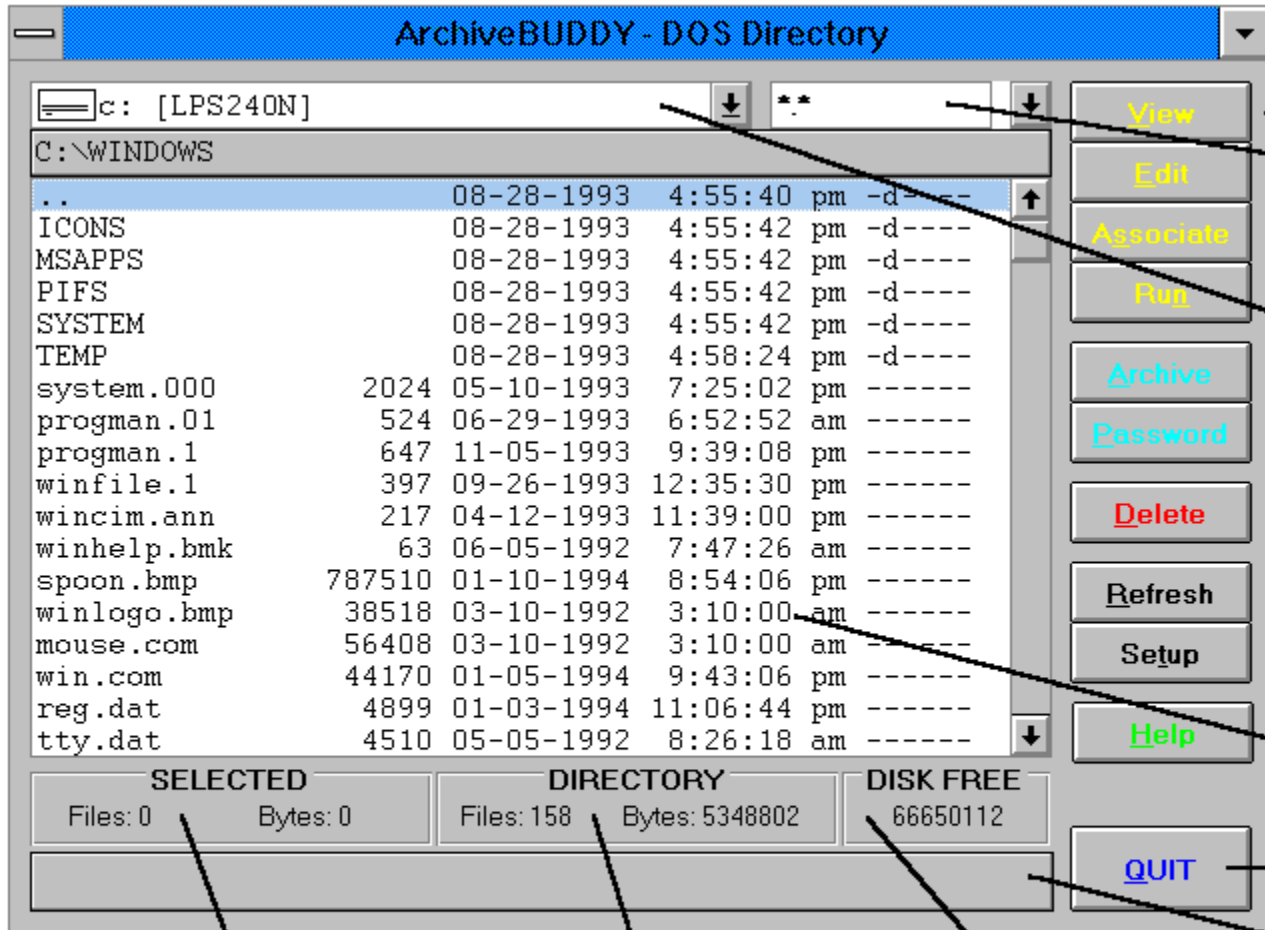
[Choosing The Type Of Files To Display](#)

[Working With Text Files](#)

# Using ArchiveBUDDY

## The DOS Directory Window

When you start ArchiveBUDDY, the DOS Directory Window displays the contents of the current drive. The window is composed of the following elements:



Selected Panel

Directory Panel

Disk Free Panel

The table below describes each directory element:

<b>Element</b>	<b>Description</b>
Drive List Box	Sets the current drive.
File Type List Box	Sets the type of files to display.
Directory List Box	Contains the list of files and directories.
Command Buttons	Directory window commands.
Path Panel	Shows current directory path.

Message Panel  
Selected Panel  
Directory Panel  
Disk Free Panel

Displays program messages.  
Shows selected file information.  
Shows current directory information.  
Shows disk space information.

# Using ArchiveBUDDY

## Command Buttons

[View](#)

[Edit](#)

[Associate](#)

[Run](#)

[Archive](#)

[Password](#)

[Delete](#)

[Refresh](#)

[Quit](#)

# Using ArchiveBUDDY

## **VIEW Command Button**

Views the selected file. If the file is an archive, ArchiveBUDDY will display its directory.



# Using ArchiveBUDDY

## **EDIT Command Button**

Edits the selected file. The editor is defined in the setup section of the program.

# Using ArchiveBUDDY

## **ASSOCIATE Command Button**

Links a selected file to an external program as defined in the program's setup section.

# Using ArchiveBUDDY

## **RUN Command Button**

Launches executable programs.

# Using ArchiveBUDDY

## **ARCHIVE Command Button**

Archives the selected DOS files.

# Using ArchiveBUDDY

## **PASSWORD Command Button**

Defines the password for a password-protected archive.

# Using ArchiveBUDDY

## **DELETE Command Button**

Deletes selected DOS files or directories. If a directory has subdirectories, they will also be deleted.

# Using ArchiveBUDDY

## **REFRESH Command Button**

Updates the current file directory.

# Using ArchiveBUDDY

## **QUIT Command Button**

Quits ArchiveBUDDY.



# Using ArchiveBUDDY

## Selecting Files

ArchiveBUDDY allows you to select files and directories using the mouse or keyboard. The same keystrokes as those in Windows 3.1 File Manager's are used. Refer to your Windows 3.1 User's Guide under Chapter 4 in section "Selecting Files or Directories" for more information.

# Using ArchiveBUDDY

## Changing Drives

Use the Drive List Box to change drives.

# Using ArchiveBUDDY

## Changing Directories

If you are nested within a directory, the Directory List Box will display the ".." characters as the first item on the list. To move up a directory level, select the ".." characters. To move down a level, select a directory name.

# Using ArchiveBUDDY

## Deleting Files And Directories

Use the DELETE command button to delete files or directories. Any directory selected will be confirmed before being deleted.

# Using ArchiveBUDDY

## Choosing The Type Of Files To Display

By default ArchiveBUDDY displays the names of all the files and directories of the current directory. To display a group of files, use the File Type List Box. For example, to display files with a TXT extension, you would enter \*.TXT and then press the REFRESH button or the ENTER key.

# Using ArchiveBUDDY

## Working With Text Files

To view a text file, select a file from ArchiveBUDDY's file directory. Use the scrollbars to navigate through it. If you'd rather navigate using the keyboard, the following keys are recognized:

HOME	Positions the view window at the beginning of the file.
END	Positions the view window at the end of the file.
UP ARROW	Scrolls the view window up one line.
DOWN ARROW	Scrolls the view window down one line.
LEFT ARROW	Scrolls the view window one character to the left.
RIGHT ARROW	Scrolls the view window one character to the right.
PGUP	Pages the view window up.
PGDN	Pages the view window down.

[Searching For Text](#)

[Copying Text To A File Or Clipboard](#)

[Editing Files](#)

[Printing Files](#)

# Working With Text Files

## Searching For Text

The FIND command lets you search text of any "key". Search keys can be based on a character, word, or phrase. All searches start from the first line in the view window. If you want to start your search from the beginning of the file, make sure to press HOME before entering your search criteria. To make a search case sensitive, select the "case sensitive" option in the Find dialog box. To continue a search, select NEXT or F3.

# Working With Text Files

## Copying Text To A File Or Clipboard

From ArchiveBUDDY's internal text viewer, select the portion of text in the file you want to copy. When ready, press COPY. If you are copying to a file, ArchiveBUDDY will prompt you for the name of the destination file for the text to be saved to. The default filename is ABW.CAP with the path being what was specified in the "Work Directory" entry in the setup section. Text saved to an existing capture file is always appended.



# Using ArchiveBUDDY

## Editing Files

To edit a file, press the EDIT command button in the DOS Directory Window.

Please Note: ArchiveBUDDY does not incorporate an editor so one must be defined in the setup section of the program.

# Using ArchiveBUDDY

## Printing Files

Text files are printed from within ArchiveBUDDY's internal text viewer. You can print selected text or the whole file using the PRINT button. The display font is used when printing.

# Using ArchiveBUDDY

## Archive File Directory

[The Archive Directory Window](#)

[Archive Directory Command Buttons](#)

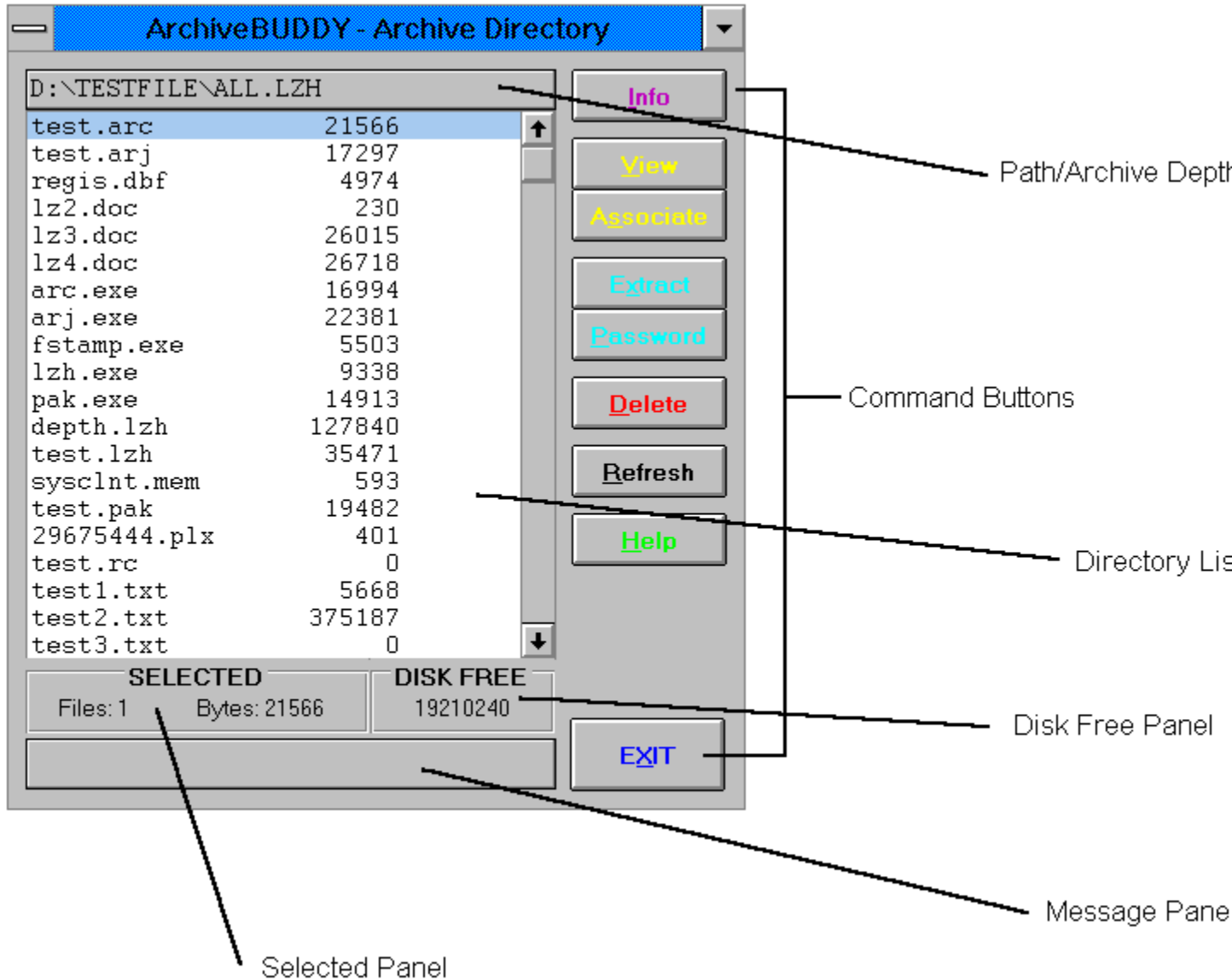
[Selecting Files](#)

[Working With Archive Files](#)

# Using ArchiveBUDDY

## The Archive Directory Window

When an archive file is selected, the Archive Directory Window displays the contents of the file. The window is composed of the following elements:



The table below describes each directory element:

<b>Element</b>	<b>Description</b>
Directory List Box	Contains the list of files within the archive.
Command Buttons	Directory window commands.
Selected Panel	Shows selected file information.

Disk Free Panel	Shows disk space information.
Message Panel	Displays program messages.
Path/Archive Depth Panel	Shows current directory path including archive level.

# Using ArchiveBUDDY

## Command Buttons

[Info](#)

[View](#)

[Associate](#)

[Extract](#)

[Delete](#)

[Refresh](#)

[Exit](#)

# Using ArchiveBUDDY

## **INFO Command Button**

Displays detailed information about the archive.

# Using ArchiveBUDDY

## **EXTRACT Command Button**

Extracts the archived file(s) selected.



# Using ArchiveBUDDY

## **DELETE Command Button**

Deletes the archived file(s) selected.

# Using ArchiveBUDDY

## **EXIT Command Button**

Exits the archive file. If you are viewing nested archive files, you will be taken back one level. (Pressing ESC also does the same thing.) How deep you are within an archive is shown in the Path/Archive Depth Panel.

# Using ArchiveBUDDY

## Working With Archive Files

Before you can work with archive files, you must first define your archive programs in ArchiveBUDDY's setup section.

[Archiving Files](#)

[Extracting Files](#)

[Deleting Archived Files](#)

# Using ArchiveBUDDY

## Archiving Files

When you have selected the files to archive, press the ARCHIVE command button. A dialog box with the following prompts will appear::

- n ARCHIVE NAME:  
Enter the archive name. A file extension is not necessary, however. If the file already exists, the selected files will be added to it.
  
- n PASSWORD:  
If you want to password-protect the archive, enter a password. (Not all archivers may support this ability.)
  
- n COMMENT FILE:  
Enter the name of the comment file. A comment file is simply a short ASCII file you create to describe the archive. If you would like to add your comments manually, select the "Create" button. Comments are displayed when archived files are extracted. (ArchiveBUDDY displays them when the INFO button is pressed.) When adding a comment block, leave one or two blank lines at the beginning and end of the block so that it stands out. If you don't want to add comments, leave the field blank. You can always add one at a later date. (Please note that not all archivers may support the ability to add a comment block.)
  
- n TYPE:  
Select the archive format. Make sure it is defined in the setup section of the program.
  
- n COMPRESSION:  
Sets the "efficiency" of compression: Size (High Compression), Size/Speed (Medium Compression), Speed (Low Compression)
  
- n SFX:  
If you want to create a self-extracting archive, select the "Create Self-extraction" check box. Make sure to set the type of model your archive will be. NOTE: (Not all archivers may support the SFX options.)
  
- n OPTIONS:
  - Reset Password: Clears the password after using it.
  - Delete Files: Selects whether the original files are deleted after being archived. If this option is selected and an error occurs during the archiving process, the files will NOT be deleted.

No masking is performed when archiving files. In other words, if a file's attribute is hidden or read-only, that is how it will be archived. If you have selected directories, only ARJ and PKZIP will archive them.

# Using ArchiveBUDDY

## Extracting Files

When you have selected the files to extract, press EXTRACT. (If the archive file is password-protected, make sure you enter the password beforehand.) A dialog box will appear prompting you for an extract path. If you want to extract to the current directory, leave it blank. If the selected archive (either ARJ or ZIP) contains directories, the "Restore Archive" box will be checked. The archive can only be extracted as a whole.

The "Just Set" command button allows you to "just set" the extract path so that you can see what the "Disk Free" space is before extracting.

No masking is performed when extracting files. In other words, if a file's attribute is hidden or read-only, that is how it will be extracted.

# Using ArchiveBUDDY

## Deleting Archived Files

To delete an archived file, press DELETE. To delete more than one file, tag the files first. If an archive file is password-protected, make sure you enter its password.

# Questions And Answers

## Answers To Common Questions

Q: I just installed ArchiveBUDDY but when I tried to run it I got an error message that said that VBRUN300.DLL couldn't be located. Where do I obtain such a file?

A: Any BBS system or "online" service that distributes Windows programs will have it available for downloading. Make sure to put it into your WINDOWS\SYSTEM directory.

Q: Why is ArchiveBUDDY sluggish when dealing with archives?

A: Make sure that the SHELL.PIF file is located in same directory as ArchiveBUDDY's. If not, ArchiveBUDDY uses Windows' \_DEFAULT.PIF which severely effects ArchiveBUDDY's performance. You should also check that WINEXCLUSIVE=TRUE is NOT present in the [386Enh] section of your SYSTEM.INI file.

Q: The directory layouts in ArchiveBUDDY are all messed up. Why is this?

A: ArchiveBUDDY relies on 3 font sets. To see if they have been installed on your system, go into Windows' CONTROL PANEL and select the "Fonts" icon. Check for the following fonts:

1. Courier New (TrueType)
2. MS Sans Serif ( not "MS Serif")
3. Small Fonts

As you go down the list, make sure you select each one so that they appear in the "sample" box. If you find a font that is not installed, refer to Microsoft Windows User's Guide Chapter 5 "Adding Screen and TrueType Fonts" section. If for some reason the fonts are indeed present, check to see if the TrueType option "Enable TrueType Fonts" is selected (as outlined in the "Turning TrueType Font Options On or Off" section).

Q: When viewing certain text files, ArchiveBUDDY displays some text with funny characters. The files, however, display fine with a DOS editor/viewer. Why?

A: You should use a font set that is compatible with the PC ASCII character set. The "8514oem" font is a good example.

Q: When trying to view a ZIPed file, I get a "Disk Full Or Bad Archive" error message. I'm told that there is nothing wrong with the ZIP file. What's wrong?

A: This message can occur if you try to view a file archived with PKZIP v2.00 using PKZIP v1.10. The solution is to use PKZIP v2.00 or better.

Q: When I try to archive files that are on a floppy drive with PKZIP, I get a "Disk Full Or Bad Archive" error message. I have the "TempDir" parameter in my ABW.INI file set to "C:". What's wrong?

A: This is a PKZIP "quirk". You can get around this problem with "SET PKTMP=C:" in your AUTOEXEC.BAT file.

Q: When I try to view \*.EXE files that have been "PKLITEd", ArchiveBUDDY tries to unZIP them. Why is that?

A: Because ArchiveBUDDY has no way of knowing if they are self-extracting.

Q: Which archivers does ArchiveBUDDY support when archiving directories?

A: ARJ and PKZIP.

Q: I can't seem to view archive files of any format. What am I doing wrong?

A: Because ArchiveBUDDY is only a "front-end" program, the archive programs must be present on your system. Be sure to specify their paths (of the ones you intend to use) in ArchiveBUDDY's setup section.



# Questions And Answers

## Running ArchiveBUDDY On A Network

The syntax to run multiple copies (instances) is:

```
abw /$[1-999]
```

Any one of the following examples are valid:

```
abw /$1  
abw /$2  
abw /$10
```

For each copy of ArchiveBUDDY running, a new ABW.INI file is created (ie. ABW1.INI, ABW2.INI, ABW10.INI, etc.). This allows you to customize each user's setup. To denote whose setup each one corresponds to, a descriptive label within each ABW.INI file can be added. For example:

```
[INITIALIZATION]  
User=Jacks Machine
```

# Questions And Answers

## Uninstalling ArchiveBUDDY

The following may be deleted from your system:

- n The ArchiveBUDDY directory (ie. ABW).
- n The setup files located in the "\WINDOWS" directory:

- DDEML.DLL
  - SETUPKIT.DLL
  - SETUP1.EXE
  - VER.DLL

- n The support files located in the "\WINDOWS\SYSTEM" directory:

- THREED.VBX
  - MUSCLE.VBX
  - CMDIALOG.VBX
  - MHININT.VBX
  - VIEWCON.DLL
  - MHRUN300.DLL

Make sure before you delete the latter files that you check with your other applications. They may use the same support files. If you are unsure, copy them to a temporary directory just incase!



