

Contents of PowerBar Install Help

This file (PBINST.HLP) provides instructions on how to use the install program provided with the PowerBar for Windows package. In addition, detailed information is provided on the various installation options. Finally, contact details for the authors of PowerBar for Windows are listed.

To see a list of the files that comprise this release of the PowerBar for Windows product see the [List of PowerBar Files](#) section.

To get general help on how to install PowerBar for Windows see the [Installing PowerBar](#) section.

For a more complete discussion on the installation options available within the PowerBar installation program see the [Installation Options](#) section.

To find out more about the authors and CVE Software contact information see the [About CVE Software](#) section.

To get help on problems associated with installation see the [Trouble Shooting](#) section.

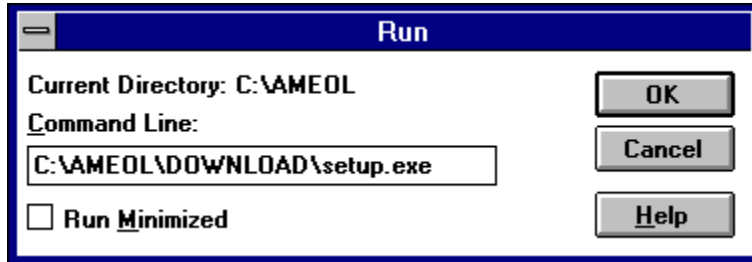
Installing PowerBar

There are two ways to install the PowerBar for Windows package. These are described below:

Install from File Manager

Move to the directory into which you have expanded the PowerBar archive (or select A:\ if you have been supplied with a release disk).

Select the "Run" option from the File Manager "File" menu. The "Run" dialog (similar to the one shown below) will then be displayed:



NOTE:

In the example shown above, the PowerBar package has been expanded into the "C:\AMEOL\DOWNLOAD" directory.

Type in (or select using the mouse) the "SETUP.EXE" program from this directory (or the A:\ drive) then select the "OK" button.

The PowerBar for Windows installation program will then be loaded.

Follow the instructions on screen to complete the installation.

Install from Program Manager

Select the "Run" option from the Program Manager "File" menu. The "Run" dialog (similar to the one shown below) will then be displayed:



If you can remember which directory the PowerBar package has been expanded into, type this into the **Command Line** edit control adding the PowerBar Setup program name, "SETUP.EXE".

NOTE:

In the example shown above, the PowerBar package has been expanded into the "C:\AMEOL\DOWNLOAD" directory.

If you cannot remember which directory the PowerBar package has been expanded into, you may

Browse the disk using the "Browse" button which will automatically enter the file name into the "Command Line" edit control.

Then select the "**OK**" button and the PowerBar for Windows installation program will be loaded.

Follow the instructions on screen to complete the installation.

Installation Options

The PowerBar installation options control the way that PowerBar will operate once installed on your system. There are three options available, described below:

As Windows Shell

When this option is selected PowerBar is installed as the Windows shell. In most systems this means that PowerBar will replace the Program Manager application (although the Program Manager application will still be available). PowerBar provides facilities to launch programs as well as a host of other functions that are not available with the standard Windows shell.

NOTE:

PowerBar may be configured to be the shell program after installation using the PowerBar configuration options.

The default installation does NOT replace your Windows shell.

As Task Manager

The Task Manager program is activated within Windows by pressing the CTRL and ESC keys at the same time. Task Manager can also be activated by double clicking the primary mouse button (usually the LEFT mouse button) on the desktop.

PowerBar can be configured to replace the default Task Manager and when the CTRL and ESC keys are pressed PowerBar will be activated instead.

NOTE:

PowerBar may be configured to be the Task Manager program after installation using the PowerBar configuration options.

The default installation WILL replace your Task Manager with PowerBar for Windows.

Into a Program Manager Group

The PowerBar for Windows installation program can create a PowerBar for Windows group within Program Manager that will contain the PowerBar icon as well as icons for the supporting PowerBar Help system.

This option is strongly recommended for ALL installations and the default installation WILL create a PowerBar for Windows group within Program Manager.

General

Selection of the **"OK"** button from the "Options" dialog will install the currently selected options. Selection of the **"Cancel"** button will stop the installation. Selection of the **"Help"** button will display this section of the PowerBar Installation help system.

List of PowerBar Files

PowerBar is shipped on a single floppy disk or as a single archive file that contains the following files:

CVEUTIL.DLL	Support functions for PowerBar.
PBINST.EXE	Main installation program.
POWERBAR.EXE	Main PowerBar .EXE file.
SETUP.EXE	Setup "stub loader" program.
PBINST.HLP	Installation help file (Windows help format).
POWERBAR.HLP	Main Help file (Windows help format).
README.HLP	Readme first (Windows help format).
REGISTER.HLP	Details on how to Register (Windows help format).
POWERBAR.INF	Setup installation script (ASCII text).
POWERBAR.INI	Default PowerBar initialisation file (ASCII text).
FILE_ID.DIZ	A description of PowerBar for Bulletin Board moderators.

If any of the files listed above are missing you have not received a complete copy of PowerBar for Windows. To obtain a complete working copy see the [About CVE Software](#) section for details on how to contact CVE Software.

About CVE Software



CVE Software is a software house based in the United Kingdom that specialises in Windows software. CVE Software have been active in the Windows development environment since Windows 2.03 (1989) and have developed with Windows through Versions 2.03, 2.11, 3.0, 3.1 and now to Windows NT. CVE Software have access to a pool of dedicated software professionals who create quality software products. Particular areas of knowledge include "system level" windows and user interface design.

CVE Software do undertake bespoke development and are delighted to offer a consultancy service covering all aspects of the software life cycle.

Any comments, suggestions on ways to improve any CVE Software product would be greatly appreciated.

CVE Software has different postal addresses to facilitate contact by mail. These addresses are shown below:

United States and Canada

CVE Software,
9 Visco Drive,
Edison,
New Jersey,
NJ 08820,
USA.

United Kingdom and Rest of World

CVE Software,
115 Eswyn Road
Tooting,
London,
SW17 8TW,
England.

There are two methods to contact CVE Software using electronic mail. These are via the global conferencing **CompuServe** system and the U.K. conferencing system **CIX**. The necessary details are shown below:

CompuServe : 76314,1552

CIX : CVESOFT @ CIX.COMPULINK.CO.UK

Trouble Shooting

This section deals with common installation problems.

When I run the "SETUP" program a different program is executed.

Ensure that the SETUP.EXE program that is being executed is the one that came with the PowerBar package. The installation program of most Windows applications is called SETUP and you may have the wrong one.

When I run the "SETUP" program I am always asked to "Insert PowerBar Disk #1 in Drive A:\".

Your copy of the PowerBar package is probably missing some files. Ensure that you have unpacked the archive file correctly or that your distribution disk is complete. See the [List of PowerBar Files](#) section for the complete list of files supplied with PowerBar for Windows.

If any other questions or problems arise please do not hesitate to contact CVE Software. See the [About CVE Software](#) for details on how to contact CVE Software.

Insert Disk Dialog

The dialog below is shown when PowerBar has been unable to find a file that is necessary to complete the PowerBar for Windows installation process.



To action this dialog, insert the diskette into the diskette drive or type in the directory that contains the PowerBar files (in the dialog above the PowerBar files are in the "C:\AMEOL\DOWNLOAD" directory).

If the problem persists verify that all the PowerBar files are present on your system. To do this compare the files that you have with the file in the [List of PowerBar Files](#) section.

Installation Directory Dialog

The dialog below is shown when the PowerBar for Windows installation program needs to be informed of the directory on your hard disk into which the PowerBar for Windows files will be installed.



To action this dialog, type the desired directory name into the edit control shown (the default value as shown above is "C:\POWERBAR"). Then select the "Continue" button. The PowerBar for Windows installation program will then create the directory specified (if necessary) and copy all the appropriate files to this directory.

NOTE:

If the PowerBar installation program is unable to create the directory specified an error message is displayed and a request is made for an alternative directory name. If the problem persists, exit the PowerBar for Window installation program and verify that the disk you have selected is not write protected.

