



**If you have enjoyed using this program,  
you might also like to look at my other software...**



### **Kith and Kin**

UK's number one genealogy shareware  
Windows 3.1 or Windows 95



### **TreeDraw**

Customise your genealogy charts  
Windows 3.1 or Windows 95



### **Shop 'Til You Drop**

Supermarket shopping assistant  
Windows 3.1 and Windows 95



### **Slide manager**

Organise your slide (transparency) library  
Windows 95 only  
(coming soon)



**To find out more about any of these programs - contact SpanSoft direct or try out  
a shareware copy from your local shareware disk vendor or the Internet.**

**You can download the latest versions from our Web site at  
<http://ourworld.compuserve.com/homepages/SpanSoft>**

## **Kith and Kin**

Note that Kith and Kin is known as "Of that ilk" in Australia and New Zealand and does not have any connection with the DOS program "Kith&Kin" created by Coherent Software, Australia.

Kith and Kin is a software package for documenting and storing family trees which has been specially designed for the MS-Windows operating system. It features an easy to use graphical interface and powerful multi-level editing tools which makes it ideal for both large and small trees.

The program supports date and place of births, baptisms, deaths, burials, marriages and divorces as well as multiple marriages and aliases for each person. Each person has two user defined fields which could be used for occupation, cause of death or any other suitable data. People and families may have notes added as well as pictures, diagrams, sounds, etc via Windows OLE.

The information which you enter into Kith and Kin is organised into families. The main screen is a window into a tree area which displays each family as a rectangle. Relationships between families are shown by parent lines. Using the mouse, you can drag and position the family rectangles within the tree area to form any tree layout you desire. You can zoom in and out of the tree to give you an overview of the entire tree layout.

Once the tree has been built up, the family rectangles can be used for direct access to data by double-clicking on the required family. You can then move through the tree by selecting people and families from within the family and person data. This makes it very easy to follow a particular route through the tree whilst examining, updating or even adding data.

Kith and Kin lets you see a timeline which displays the events associated with selected families interspersed with notable historic events. These events can be edited and added to using a utility supplied free with every registered copy of Kith and Kin.

A printed book can be produced with family group details (which may incorporate pictures and diagrams) and a complete, cross-referenced index to names and families. You have control over the formatting and extent of all printed reports which also include person details, tree layout, descendant and ancestral trees, timeline and census report.

International users can modify date descriptors and all the text used when printing reports. This means that Kith and Kin will print reports (and display most data) in any language.

Compatibility with "Personal Ancestral File" GEDCOM and 'standard' GEDCOM V5.5 files means you can export and import data to and from other genealogy programs. You can also use this feature to prepare extracts from tree files.

**Download Kith and Kin from our Web site:  
<http://ourworld.compuserve.com/homepages/SpanSoft>**

**[Features](#)**

**[Screen shots](#)**

**[What the users say](#)**

## **Kith and Kin - Features**

Graphical representation of family units and relationships provides fast access to editing.

Multi-level editing means the user can move through the tree while editing and adding people and families.

Support for date and place of births, baptisms, deaths, burials, marriages and divorces.

Two user defined fields and multiple aliases for each person.

Notes for each person and family may be entered, edited and are included in printed reports. Full clipboard support allows exchange of text with other applications. Supports external notes files.

Pictures, diagrams, sounds, videos and any object created by other applications which support OLE may be associated with a person or family.

Each person and family has a code which allows fast access to editing as well as making the printed documents readable.

Search for text in any field, including notes, then edit person or family details direct from the search results.

Search for dates.

Search for date inconsistencies, eg. death before birth.

"On this day" search. Finds all events which fall on one given day of the year.

Display tree statistics.

Find the relationship between any two given people.

Printouts include tree layout, descendant tree, ancestral tree, indented descendant tree, family details, person details, index, timeline, missing data and census report. The format and extent of printed documents may be fully controlled by the user.

Print preview function.

"Print" textual reports to a disk file instead of the printer.

PAF GEDCOM files may be imported and exported. Export all or part of a tree and create a new tree or merge trees when importing.

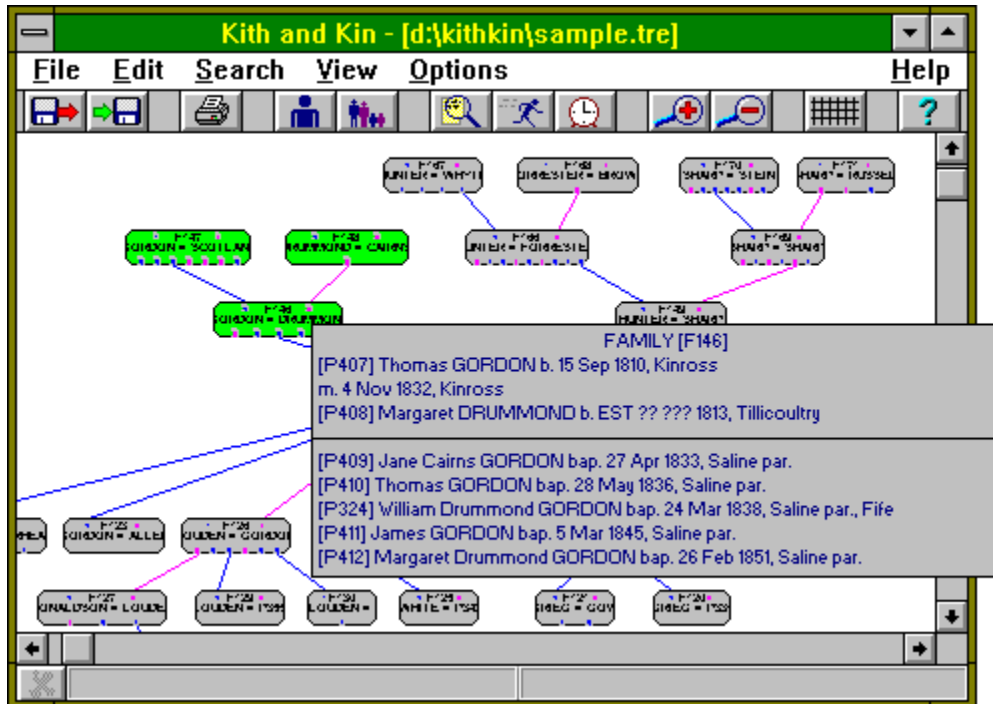
Export to a comma-delimited text file for importing into databases.

Customisable screen display fonts.

Snap-to grid helps in positioning families on the screen.

Extensive on-line, context sensitive help.

## Kith and Kin - Screen shots



**FAMILY : [F118] - [P324] William Drummond GORDON = [P325] Jane HUNTER**

**Father** [P324] William Drummond GORDON bap. 24 M

**Mother** [P325] Jane HUNTER bap. 7 Oct 1838, Clack

**Marriage** Date: 15 Jun 1860 Place: Westfield, Clackmannan

**Divorce** Date: Place:

**Children**

- [P362] Thomas Drummond GORDON b. 7 May 1861, Saline, Fife
- [P338] Robert Hunter GORDON b. 27 Jul 1863, Westfield, Clackmannan
- [P345] Helen GORDON b. 19 Jul 1865, Hillend, Clackmannan

**OBJECTS - [F118] - [P324] William Drummond GORDON = [P325] Jane HUNTE**

**Objects:**

Mary and Catherine

Insert

Delete

## **Kith and Kin - What the users say**

"Kith and Kin is a robust and simple to use genealogy program for Windows 3.1. This is a good program if you are the least bit interested in researching the genealogical history of your family. It is easy enough for the beginner and casual data collector, yet has enough bells and whistles to set it apart from other programs and make your work seem like the fun it should be."

- **Windows On-Line Review (Shareware Edition)**

"... this is definitely the program I'd use. It's very well programmed and presented, user-friendly and generally a treat to use." - **PC Mart**

"Overall I remain very impressed by this package. It is the first genealogy package for Windows which I have tried which I feel provides something extra by using the Windows interface and facilities." - **Family Tree Computer Magazine**

"A very much better quality product than others in the area." - **DF, Co. Down**

"This is certainly the best Windows based program of its type that I have yet found."  
- **JS, Kent**

"This is the first shareware that I've actually stumped up for and I do so gladly." - **NB, Dyfed**

"An excellent product - congratulations." - **GMG, Preston**

# TreeDraw



TreeDraw is a specialist graphics editor for creating high quality genealogical drop-line charts.

"It combines many of the strengths of Kith and Kin - ease of use, excellent value for money and software which has obviously been designed by an IT professional who also has a keen interest in genealogy!" - SF, Berkshire

Descendant and ancestral trees may be imported direct from Kith and Kin tree files or from PAF GEDCOM files created by other genealogy programs. TreeDraw converts these trees into easily edited picture elements which can then be re-formatted and re-arranged before storing and printing.

It is now easy to produce perfectly laid out charts and incorporate pictures, diagrams and other simple graphics. The charts may be as complex or as simple as you wish.

By importing a combination of descendant and ancestral trees from one or more tree files, it is possible to build complex charts which can extend in any direction.

TreeDraw maintains a link between each chart text element and the source field in the original tree file. This means that you can update each text element automatically to mirror any changes in the original file. The tree link for each text element can also be modified manually. This is a powerful feature which gives you control over the content and format of the text in the chart.

Additional text elements may be entered manually to provide titles, headings, comments, etc.

As well as text, you can place into the chart simple graphics (lines, boxes, circles) and OLE objects like pictures, clip-art, diagrams, etc.

TreeDraw lets you control the size, shape, style, colour and alignment of all chart elements and supports colour printing.

**Download TreeDraw from our Web site:  
<http://ourworld.compuserve.com/homepages/SpanSoft>**

**[Features](#)**

**[Screen shots](#)**

**[What the users say](#)**

## **TreeDraw - Features**

Import descendant and ancestral charts from one or more Kith and Kin or GEDCOM files.

Two user-defined fields for importing data from Kith and Kin or set up your own GEDCOM tags to select specific data from a GEDCOM file.

Charts may extend vertically or horizontally and be left/top or centre justified.

Update the chart text elements automatically to match any changes in the source file.

Add extra text, notes, titles, etc.

Paste pictures and clip-art via Windows OLE.

Add simple graphics, lines, boxes, etc.

Supports colour printing.

Full control over fonts, colour, size, shape and alignment of picture elements.

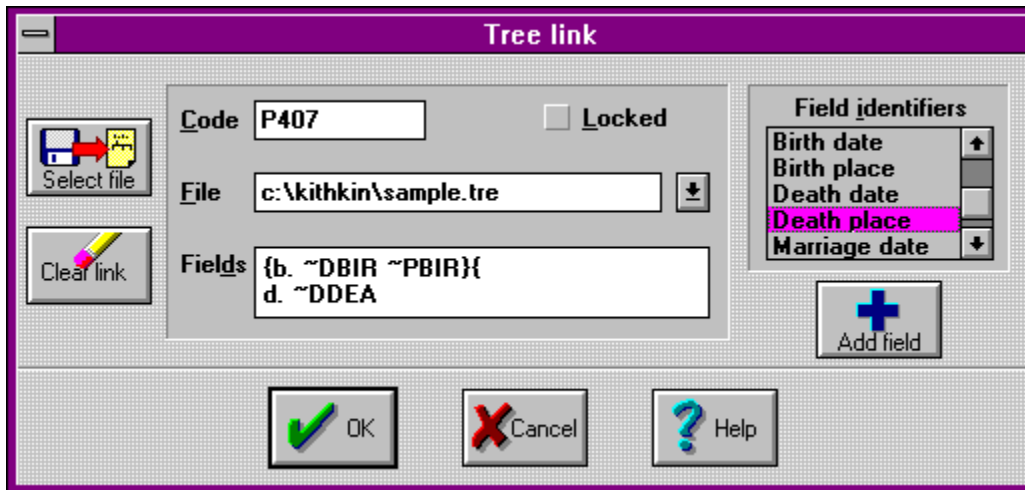
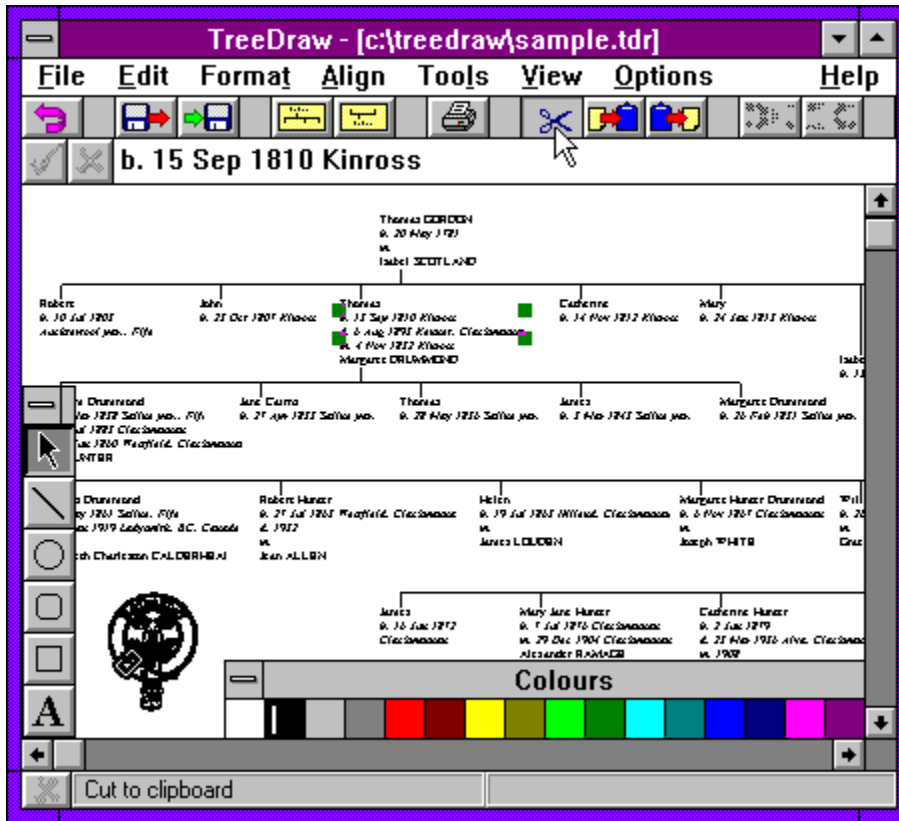
Control the format and content of imported trees.

Full, on-line, context-sensitive manual.

Easy to use. Get your charts the way you want them... in minutes!



## TreeDraw - Screen shots



## **TreeDraw - What the users say**

"I want to express my thanks for the marvellous software program that you have created. I have used the program to create a Family Tree, and find that the program has so many useful features, and once mastered, is so easy to use." - **LR, VA USA**

"It's difficult to fault TreeDraw and it is seldom we encounter a program which fills such a long-felt need and is so simple to use." - **PC Plus**

"It combines many of the strengths of Kith and Kin - ease of use, excellent value for money and software which has obviously been designed by an IT professional who also has a keen interest in genealogy!" - **SF, Berkshire**

"I think it is excellent, and will be useful to any genealogist with Windows... this is a well designed package with just the features needed for preparing family trees." - **Family Tree Magazine**

## Shop 'Til You Drop

Shop 'Til You Drop is a software package which aims to make your supermarket shopping trips as swift, cheap and painless as possible.

Shop 'Til You Drop maintains a list of all the items which you buy regularly, allowing you to compile and print off a Shopping List which lists items in the order in which you walk round the supermarket.

No more searching up and down the shopping list to find the next product. You simply start at the top of the list and work down as you move from aisle to aisle.

If you sometimes visit more than one shop or buy different sizes or brands of a product, Shop 'Til You Drop can analyse your shopping list and make recommendations which could save you money.

Shop 'Til You Drop will also print off a handy Fridge List of all the products currently held in the program for you to stick on your fridge. As you use up each product, simply tick it off on the list. When shopping day comes around you can be sure that your new shopping list will be complete.

Shop 'Til You Drop works by allowing you to create a floor plan of your usual supermarket(s). Each aisle is assigned to a standard product category and you then determine the order in which you visit each aisle. Since each item is also assigned a category, Shop 'Til You Drop can now produce the shopping list in the correct order.

Once you have completed your shopping, you can enter the actual prices you have paid back into the program from your till receipt ready for the next time you go shopping.



**Download Shop 'Til You Drop from our Web site:  
<http://ourworld.compuserve.com/homepages/SpanSoft>**

## **Slide Manager**

Slide Manager lets you catalogue your slide (transparency) library on your PC so that it is easy to create slide shows and talks.

You can also use the system to keep track of where your slides are. Some may be out on loan for example.

As well as recording details of each slide (such as title, keywords, image quality, etc), Slide Manager will also store an image of each slide. So if you have the equipment to scan or digitise your slides you can actually see the pictures on your PC.

Slide Manager will print out slide labels to your specification. Each slide is given a number and category prefix so once your slides are labelled, it's easy to pick out the ones you need for a slide show.

Slide shows are constructed on a "light table". You use keywords or SQL statements to find the slides you want from the database and then drop the slides onto the light table. Once they are there you can organise them into the order you want and then save that particular slide show to a file in case you need it again. Slide Manager will print out a Running Order and Picking List for the slide show currently on the light table.

Any slides which have been booked out (ie. they are not currently available) are indicated on the light table.

**Download Slide Manager from our Web site:  
<http://ourworld.compuserve.com/homepages/SpanSoft>**

## **SpanSoft**

Nick J Hunter  
**SpanSoft**  
8 Juniper Hill  
GLENROTHES  
KY7 5TH  
Scotland

Telephone: National: (01592) 743110  
International: +44 1592 743110  
Voice or fax available 24hrs.  
If sending a fax please ensure that your fax sends a handshake tone  
immediately so that our phone system knows it is not a voice call.  
Calls by voice may be answered by machine.

E-Mail: [SpanSoft@compuserve.com](mailto:SpanSoft@compuserve.com)

The latest news on our software is always available on our Web pages at:  
<http://ourworld.compuserve.com/homepages/SpanSoft>

**SpanSoft is a member of the Association of Shareware Professionals.**

