

# Contents

## Introduction

[About Viruses](#)

[Features of VirusScan](#)

[Types of Viruses](#)

[Why Scan?](#)

[About McAfee](#)

## How to...

[Use VShield, McAfee's on-access scanner](#)

[Configure a Scan](#)

[Create a Scan Settings File](#)

[Start a Scan](#)

[Respond to a Virus](#)

[View the Virus Activity Log](#)

[Contact McAfee](#)

## Tips and Tricks

[Preventing Virus Infection](#)

[Password-protecting VirusScan](#)

[Testing Your Installation](#)

[Viewing the Virus List](#)

[Making an Emergency Disk](#)

## Troubleshooting

[If VirusScan detects a virus](#)

## Reference

[Virus List](#)

[McAfee Virus Information Library](#)

[VirusScan Command-line Options](#)

[DOS Error Levels](#)

[VSC File Format](#)

[Centralized Alerting ALR File Format](#)

[User's Manual](#)

## On-access Scanning

VShield, VirusScan's on-access scanner, provides real-time identification of both known and unknown viruses upon file access, file creation, file copy, file rename, file run, and disk insert.

To configure VShield, [Click here](#).

### **Note**

To configure VShield from the desktop, open the VirusScan program group and double-click the VirusScan Console icon.

## Configuring a Scan

VirusScan's on-demand scanner allows you to scan new media or specific files to determine whether a computer virus is present. VirusScan immediately detects known boot, file, multi-partite, stealth, encrypted, and polymorphic viruses located within files, drives, and diskettes.

To configure and customize on-demand scanning functions, complete the following procedure:

1. [Start VirusScan](#).
2. Select the file locations and file types to scan on the [Detection](#) page.
3. Select How VirusScan will respond to a virus infection on the [Action](#) page.
4. Select How VirusScan alerts you or network administrators of virus activity on the [Alert](#) page.
5. Select reporting options on the [Report](#) page.
6. Select files to exclude from scanning on the [Exclusion](#) page.
7. To run this scan now, click **Scan Now**. To save this configuration as a VirusScan settings file, select Save Settings from the File menu.

### Tip

To restore all settings to their defaults, click **New Scan**.

## Creating a VirusScan Settings Configuration (VSC) File

For maximum convenience and flexibility, VirusScan's configuration information can be saved as a VSC file. Once created, this file can be launched by scheduling programs, placed in the Startup directory, or launched from the File Manager.

To create a VSC File , complete the following procedure:

1. [Start VirusScan.](#)
2. Select the file locations and file types to scan on the [Detection](#) page.
3. Select How VirusScan will respond to a virus infection on the [Action](#) page.
4. Select How VirusScan alerts you or network administrators of virus activity on the [Alert](#) page.
5. Select reporting options on the [Report](#) page.
6. Select files to exclude from scanning on the [Exclusion](#) page.
7. Select Save Settings from the File menu. The Save Scan Settings As dialog box is displayed.
8. Select a path and filename for the new VSC file. Click **Save**.
9. [Associate VSC files with VirusScan.](#)

### Tip

To restore all settings to their defaults, click **New Scan**.

## Starting a Scan

VirusScan is designed to be fully integrated into your Windows desktop environment. This integration makes VirusScan very accessible and offers many methods for starting a scan.

Select from the following:

[Scanning from the Main Window](#)

[Scanning using a saved scan settings file](#)

[Scanning automatically on system startup](#)

[Scheduling a scan](#)

## Scanning from VirusScan's Main Window

To scan from the Main Window, complete the following procedure.

1. [Start VirusScan.](#)
2. [Configure the Scan.](#)
3. Click **Scan Now**. VirusScan begins scanning for viruses.

### See Also

[Scanning using a saved scan settings file](#)

[Scanning automatically on system startup](#)

[Scheduling a scan](#)

[Associating VSC files with VirusScan.](#)

## Scanning using a Saved Scan Settings File

To scan using a VirusScan settings file, complete the following procedure.

1. Locate and double-click a saved [VirusScan Settings Configuration \(VSC\) File](#).
2. Click **Scan Now**. VirusScan begins scanning for viruses using the saved configuration.

### See Also

[Scanning from the Main Window](#)

[Scanning automatically on system startup](#)

[Scheduling a scan](#)

[Associating VSC files with VirusScan.](#)

## Scanning Automatically on System Startup

VirusScan can automatically run an on-demand scan each time the system is started. To configure VirusScan to run on system startup, complete the following procedure:

1. Create a [VirusScan Settings Configuration \(VSC\) File](#).
2. [Configure the VSC file to start when opened](#).
3. Copy the VSC file to the Startup Group.

### Note

All files placed in the Startup directory are automatically run at system startup.

### See Also

[Scanning from the Main Window](#)

[Scanning using a saved scan settings file](#)

[Scheduling a scan](#)

[Associating VSC files with VirusScan](#).



## Scheduling a scan

To schedule a scan, use the VirusScan Console. To start the VirusScan Console, open the VirusScan program group and double-click the VirusScan Console icon or [click here](#).

### See Also

[Scanning from the Main Window](#)

[Scanning using a saved scan settings file](#)

[Scanning automatically on system startup](#)

[Associating VSC files with VirusScan.](#)

## Associating VirusScan Configuration Files (.VSC)

In order to open a VSC file from the File Manager or run one at Windows startup, VSC files must be associated with VirusScan. To associate VSC files with VirusScan, complete the following procedure:

1. Open the File Manager.
2. Navigate to a directory where a VSC file is located.
3. Highlight the VSC file.
4. Select Associate from the File menu. The Associate dialog box is displayed.
5. Enter the path to the VirusScan executable (default C:\MCAFEE\VIRUSCAN\SCAN16.EXE) or click Browse to locate it.
6. Click **OK**. The VSC file is associated with VirusScan.

### See Also

[Configuring a VSC file to start when opened](#)

## Configuring a VSC file to start when opened

To configure a VSC file to start when opened, complete the following procedure:

1. Open the VirusScan configuration file (.VSC) with any text editor (e.g., Notepad).
2. Locate the following line under ScanOptions:

```
bAutoStart=0
```

3. Change the line to:

```
bAutoStart=1
```

4. Save the file and exit. The VSC file will automatically start scanning when opened.

### See Also

[Associating VSC files with VirusScan.](#)

## On-demand Scanning

VirusScan's on-demand scanner allows you to scan new media or specific files to determine whether a computer virus is present. VirusScan immediately detects known boot, file, multi-partite, stealth, encrypted, and polymorphic viruses located within files, drives, and diskettes.

To configure and customize on-demand scanning functions, complete the following procedure:

1. [Start VirusScan](#).
2. Select the file locations and file types to scan on the [Detection](#) page.
3. Select How VirusScan will respond to a virus infection on the [Action](#) page.
4. Select How VirusScan alerts you or network administrators of virus activity on the [Alert](#) page.
5. Select reporting options on the [Report](#) page.
6. Select files to exclude from scanning on the [Exclusion](#) page.
7. Click **Scan Now**.

### Tip

To restore all settings to their defaults, click **New Scan**.

## On-demand Scanning: Selecting Files

To select file locations and file types to scan, complete the following procedure:

1. [Start VirusScan](#). The VirusScan opens with the Detection page displayed.
2. To add a scan location, click **Add**. The Add Scan Item dialog box is displayed.

To scan your computer, all removable media, all fixed disks, or all network drives, select the Select Item to Scan option button and the corresponding option from the drop down box. Click **OK**.

To select a specific drive or directory, select the Select Drive or Directory option button. Enter the drive or directory or click **Browse** to choose a directory. To scan the item's subdirectories, select the Include Subdirectories checkbox. Click **OK**.

3. Repeat Step #2 until all scan locations are entered.
4. Select the File types to scan.

To scan all file types, select All Files.

To scan program files only, select Program Files Only. Program files are file types that are most susceptible to virus infection (.EXE, .COM, .DO?, .XL?). To add additional file types to the program files list, see [Program Files](#).

5. To scan [compressed files](#), select the Compressed Files checkbox.
6. To continue configuring this scan, select another property page. To begin scanning, click Scan Now. To save these changes as a VirusScan Settings Configuration file (VSC), select Save Settings from the File menu. To save these changes as the default scanning profile, select Save As Default. To exit without scanning or saving the changes, select Exit from the File menu.

### See Also

[On-demand Scanning](#)

[Select how VirusScan responds to infected files](#)

[Select alerting options](#)

[Select virus logging options](#)

[Select files and directories to exclude from scanning](#)

## On-demand Scanning: Selecting Response Action

To select how VirusScan responds to an infected file, complete the following procedure.

1. [Start VirusScan](#). The VirusScan opens with the Detection page displayed.
2. Click the Action tab.
3. Select how VirusScan will respond to an infected file.

[Prompt for action](#)

[Move infected files to a directory](#)

[Clean infected files](#)

[Delete infected files](#)

[Continue Scanning](#)

4. To continue configuring this scan, select another property page. To begin scanning, click Scan Now. To save these changes as a VirusScan Settings Configuration file (VSC), select Save Settings from the File menu. To save these changes as the default scanning profile, select Save As Default. To exit without scanning or saving the changes, select Exit from the File menu.

### See Also

[On-demand Scanning](#)

[Select files and file types to scan](#)

[Select alerting options](#)

[Select virus logging options](#)

[Select files and directories to exclude from scanning](#)

## On-demand Scanning: Selecting Alert Options

To select alerting options, complete the following procedure.

1. [Start VirusScan](#). The VirusScan opens with the Detection page displayed.
2. Click the Alert tab.
3. To configure VShield to send notifications to servers running NetShield, select the Send Network Alert checkbox. Enter the path to the server's [Centralized Alerting](#) directory or click **Browse** to locate the directory.
4. To configure VirusScan to notify you of virus activity, select from the following:

For VirusScan to sound an audible alert, select the Sound Audible Alert checkbox.

For VirusScan to send a custom message, select the Display Custom Message checkbox and enter a custom message (up to 256 characters).

5. To continue configuring this scan, select another property page. To begin scanning, click Scan Now. To save these changes as a VirusScan Settings Configuration file (VSC), select Save Settings from the File menu. To save these changes as the default scanning profile, select Save As Default. To exit without scanning or saving the changes, select Exit from the File menu.

### See Also

[On-demand Scanning](#)

[Select files and file types to scan](#)

[Select how VirusScan responds to infected files](#)

[Select virus logging options](#)

[Select files and directories to exclude from scanning](#)

## On-demand Scanning: Selecting Logging Options

The Report page is used to configure how VirusScan maintains historical virus activity information. To configure the Report page, complete the following procedure:

1. [Start VirusScan](#). The VirusScan opens with the Detection page displayed.
2. Click the Report tab.
3. Select the Log to File checkbox. Enter a log file name and path or click **Browse** to choose one.
4. To limit the size of the log file, select the Limit Size of Log File checkbox and enter the maximum log file size.
5. Choose which information to include in the log file by selecting each item's checkbox. This information includes:

- Virus detection
- Virus cleaning
- Infected file deletion
- Infected file move
- Session settings
- Session summary
- Date and time
- User name

6. To continue configuring this scan, select another property page. To begin scanning, click Scan Now. To save these changes as a VirusScan Settings Configuration file (VSC), select Save Settings from the File menu. To save these changes as the default scanning profile, select Save As Default. To exit without scanning or saving the changes, select Exit from the File menu.

### See Also

[On-demand Scanning](#)

[Select files and file types to scan](#)

[Select how VirusScan responds to infected files](#)

[Select alerting options](#)

[Select files and directories to exclude from scanning](#)

[Viewing the Virus Activity Log](#)



## On-demand Scanning: Excluding Files

To exclude files, directories, or drives from scanning, complete the following procedure:

1. [Start VirusScan](#). The VirusScan opens with the Detection page displayed.
2. Click the Exclusion tab.
3. To add an item to exclude from scanning, click **Add**. The Exclude Item dialog box is displayed.

Enter the full path to a file, drive, or directory or click **Browse** to locate one.

To exclude subdirectories from scanning, select the Include Subdirectories checkbox.

To exclude the item from file scanning, select the File Scanning checkbox. To exclude the item from boot sector scanning, select the Boot Sector Scanning checkbox.

Click **OK**.

4. Repeat Step 3 for each exclude item.
5. To edit a scan item, select the item and click **Edit**.
6. To remove a scan item, select the item and click **Remove**.
7. To continue configuring this scan, select another property page. To begin scanning, click Scan Now. To save these changes as a VirusScan Settings Configuration file (VSC), select Save Settings from the File menu. To save these changes as the default scanning profile, select Save As Default. To exit without scanning or saving the changes, select Exit from the File menu.

### See Also

[On-demand Scanning](#)

[Select files and file types to scan](#)

[Select how VirusScan responds to infected files](#)

[Select alerting options](#)

[Select virus logging options](#)

## Scanning Your Diskettes

Although the on-access scanning component of VirusScan (VShield) will monitor your system for viruses, it is recommended that you scan all diskettes you use on your PC. Most viruses invade your system when you boot or attempt to boot from an infected diskette or when you copy, run, or install programs or files that are infected.

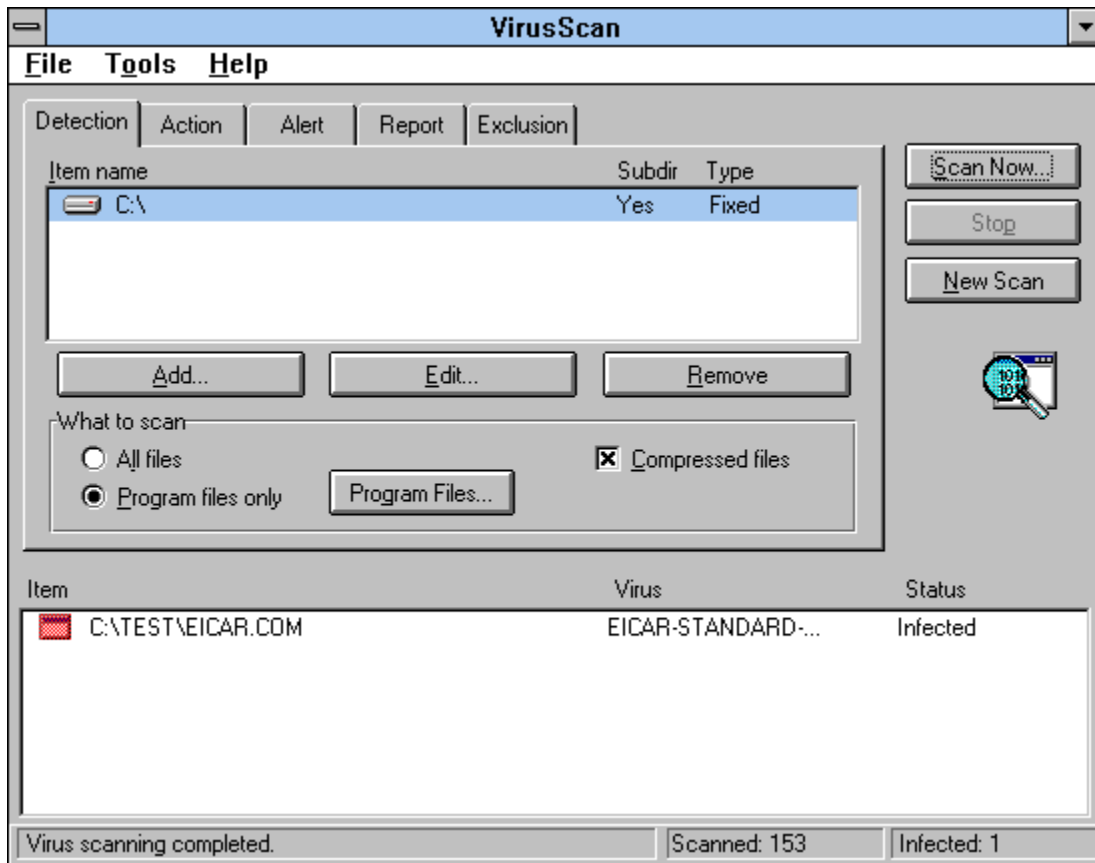
Always make sure your diskette drives are empty before turning on your computer. A diskette does not have to be bootable to catch a boot sector virus.

Whenever you insert unknown diskettes in your drive—including diskettes received from friends, coworkers, and salespeople—run VirusScan before executing, installing, or copying their files. To scan your diskettes, complete the following procedure:

1. [Start VirusScan](#). VirusScan opens with the Detection page displayed.
2. Click **Add**. The Add Item to Scan dialog box is displayed.
3. Enter the drive letter for the diskette in the Select Drive or Directory to Scan field, or click **Browse** to select a drive.
4. Remove all other scan items. To remove a scan item, highlight an item and click **Remove**.
5. Insert a diskette and click **Scan Now**. The diskette is scanned and the names of any infected files are displayed.
6. If VirusScan detects a virus on this diskette, it will take the action you specified during configuration. For information on configuring how VirusScan responds to infected files, see [On-demand Scanning: Selecting Response Action](#). For details on virus removal, see [Removing a virus found in a file](#).
7. Repeat Steps 5 and 6 for all diskettes you wish to scan.

## VirusScan Main Window: Virus Found

When VirusScan encounters a virus, the infected file is displayed in the lower part of the VirusScan Main Window.



From this window, you can manually respond to the infected files. If you selected an automatic action, check each file to make sure the virus was cleaned, deleted, or moved. If you attempted to clean the file and the virus was not removed, right-click the file, select Delete from the shortcut menu, and restore the file from backups.

Right-click an infected file and select one of the following options from the shortcut menu:

- [Clean](#)
- [Delete](#)
- [Move](#)
- [File Info](#)
- [Virus Info](#)

## Responding to a Virus

Viruses attack computer systems by infecting files—usually executable program files or Microsoft Word documents and templates. VirusScan can safely remove most viruses from infected files and repair any damage. Some viruses, however, are designed to damage your files beyond repair. These irreparably damaged files, called "corrupted" files, can be moved by VirusScan to a quarantine directory or deleted to prevent another virus infection of your system.

If VirusScan finds infected files, complete one of the following procedures:

[Removing a virus found in a file](#)

[Removing a virus found in memory](#)

## Removing a Virus Found in a File

If VirusScan detects a virus in a file, it will display the infected files and take the action you specified during configuration. See [Action property page](#).

[Prompt for action](#)

[Move infected files to a directory](#)

[Clean infected files](#)

[Delete infected files](#)

[Continue scanning](#)

### See Also

[Removing a virus found in memory](#)

[Understanding False Alarms](#)

## Prompt for Action

If you selected Prompt for Action from the [Action property page](#) and VirusScan finds a virus, the Virus Found dialog box is displayed.



Select one of the following options:

[Continue](#)

[Stop](#)

[Clean](#)

[Delete](#)

[Move File to...](#)

[Exclude](#)

[Info](#)

## Move Infected Files to a Directory

If you selected Move Infected Files to a Directory from the [Action property page](#) and a virus is found, any infected files are copied to the specified directory.

After the file is moved to the quarantine directory, you can clean the file or restore the file from backups and return it to its original location. To return the file to the original directory location, refer to the VirusScan log file (VSCLOG.TXT). For information on enabling report logging, see [Report page](#). To open the log file, [click here](#).

## Clean Infected Files

If you selected Clean Infected Files from the [Action property page](#) and a virus is found, VirusScan automatically attempts to clean the file.

To confirm the virus was cleaned, check the [VirusScan Main Window](#). If the virus was not successfully removed, right-click the infected file and select Delete. Then, restore the file from backups.



## Delete Infected Files

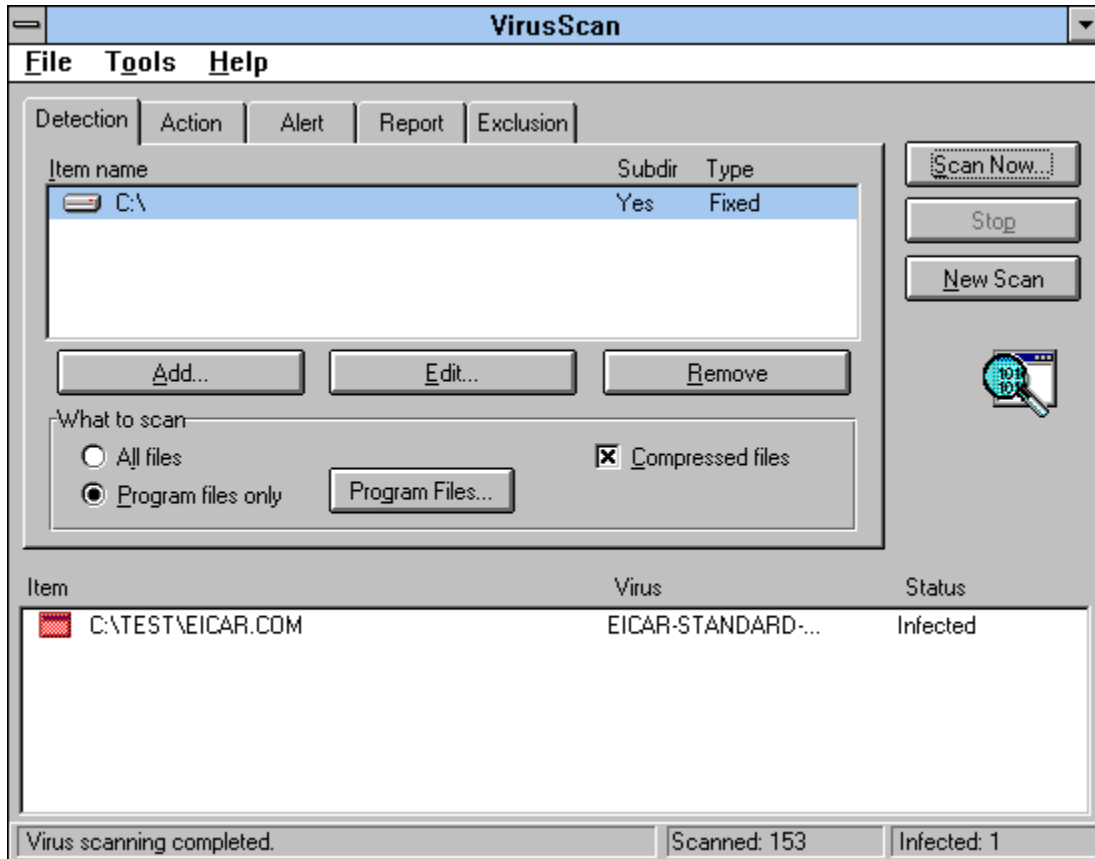
If you selected Delete Infected Files from the [Action property page](#) and a virus is found, VirusScan automatically deletes the infected file.

If this option is selected, confirm that report logging is enabled. This will ensure you have a record of which files were deleted, so you can restore them from backups. See [Selecting Logging Options](#).

## Continue Scanning

If you selected Continue Scanning from the [Action property page](#) and a virus is found, VirusScan continues scanning without taking any action.

When the scan is complete, you can manually respond to each infected file.



Right-click an infected file and select one of the following options:

- [Clean](#)
- [Delete](#)
- [Move](#)
- [Exclude](#)
- [File Info](#)
- [Virus Info](#)

## Password-protecting VirusScan

To optimize virus protection and security, VirusScan can be password-protected on a per-page basis, meaning you can individually choose which VirusScan property pages you want to protect. Select from the following options:



[Enabling password protection](#)

[Editing password protection](#)

[Disabling password protection](#)

## Enabling Password Protection

To enable password protection, complete the following procedure.

1. [Start VirusScan.](#)
2. Select Password Protect from the Tools menu. The Password Protection dialog box is displayed.
3. Select which property pages to protect. Protected pages are preceded by . Unprotected pages are preceded by .
4. Click **Password**. The Specify Password dialog box is displayed.
5. Enter a password, reenter the password, and click **OK**. You are returned to the Password Protection dialog box.
6. Click **OK**. Whenever anyone attempts to access one of the protected pages, they are prompted for a password.

### Notes

To access the VirusScan Property pages, select Unlock Password from the Tools menu and enter the password.

You are prompted for a password once per session.

Passwords are not case-sensitive. For example, if you chose the password "VirusScan"; "VIRUSSCAN", "virusscan", and even "ViRuSsCaN" would be accepted.



### See Also

[Editing password protection](#)

[Disabling password protection](#)

## Editing Password Protection

To edit password protection, complete the following procedure.

1. [Start VirusScan.](#)
2. Select Password Protect from the Tools menu. The Password dialog box is displayed.
3. Enter the password and click **OK**. The Password Protection dialog box is displayed.
4. Select which property pages to protect. Protected pages are preceded by . Unprotected pages are preceded by .
5. To change the password, click **Password**. The Specify Password dialog box is displayed. Enter a new password, reenter the password, and click **OK**. You are returned to the Password Protection dialog box.
6. Click **OK**. Whenever anyone attempts to access one of the protected pages, they are prompted for a password.

### Notes

Passwords are not case-sensitive. For example, if you chose the password "VirusScan"; "VIRUSSCAN", "virusscan", and even "ViRuSsCaN" would be accepted.

You are prompted for a password once per session.



### See Also

[Enabling password protection](#)

[Disabling password protection](#)

## Disabling Password Protection

To disable password protection, complete the following procedure:

1. [Start VirusScan.](#)
2. Select Password Protect from the Tools menu. The Password dialog box is displayed.
3. Enter the password and click **OK**. The Password Protection dialog box is displayed.
4. Unlock all property pages. Protected pages are preceded by . Unprotected pages are preceded by .
5. Click **OK**. Password protection is disabled.

### Notes

Passwords are not case-sensitive. For example, if you chose the password "VirusScan"; "VIRUSSCAN", "virusscan", and even "ViRuSsCaN" would be accepted.

You are prompted for a password once per session.

### See Also

[Enabling password protection](#)

[Editing password protection](#)

## Viewing the Virus Activity Log

When enabled, the activity log contains information on all on-demand scanning activity. To view the log file, select View Activity Log from the File menu or [click here](#).

### See Also

[On-demand Scanning: Selecting Logging Options](#)

## Viewing the Virus List

The Virus List helps you locate basic, but vital information about your virus. To find out about your virus, complete the following procedure:

1. Open the Virus List by selecting Virus List from the Tools menu or [clicking here](#). The Virus List begins loading.
2. Locate your virus by scrolling through the Virus List or clicking **Find Virus** and entering the virus name.
3. Highlight the virus and click **Virus Info**. The Virus Information page is displayed.
4. This information includes:

Virus Information, including:

[Virus Name](#)

[Infects](#)

[Virus Size](#)

Virus Characteristics, including:

[Memory Resident](#)

[Encrypted](#)

[Polymorphic](#)

[Repairable](#)

[Macro Virus](#)

### Notes

The Virus List is over 250 pages long. It may take a while to open.

To find out detailed information about your virus, use the [Virus Information Library](#).



## To start VirusScan

From the Program Manager, open the McAfee VirusScan program group and double-click the VirusScan icon.

## Prompt for Action: Continue

VirusScan continues scanning without taking any action. When the scan is complete, you can manually respond to each infected file.

For more information, see [Removing a Virus: Continue Scanning](#).

## **Prompt for Action: Stop**

Halts the scan and returns you to the main window.

## Prompt for Action: Clean

VirusScan attempts to clean the file.

To confirm the infected file was cleaned, check the [VirusScan Main Window](#). If the file was not successfully cleaned, right-click the infected file and select Delete from the shortcut menu. Then, restore the file from backups.

## Prompt for Action: Delete

VirusScan deletes the infected file.

If this option is selected, confirm that report logging is enabled. This will ensure you have a record of which files were deleted, so you can restore them from backups. See [Selecting Logging Options](#).

## **Prompt for Action: Move File to...**

Opens a Browse dialog box where you can move the file to a quarantine directory.

## **Prompt for Action: Exclude**

Excludes the file from future scanning.

### **Note**

Since no action against the infected file and it is excluded from future scanning, this option is not recommended unless the file is generating a false alarm.

## **Prompt for Action: Info**

Lists detailed file and virus information.



## Clean

Attempts to remove the virus from the infected file.

## Delete

VirusScan deletes the infected file.

Before using this option, confirm that report logging is enabled. This will ensure you have a record of which files were deleted, so you can restore them from backups. See [Selecting Logging Options](#).

## **Move**

VirusScan prompts you to select a quarantine location.

After the file is moved to the quarantine directory, you can clean the file or restore the file from backups and return it to its original location.

## **Continue Scanning: Exclude**

Excludes the file from future scanning.

### **Note**

Since no action against the infected file and it is excluded from future scanning, this option is not recommended unless the file is generating a false alarm.

## **File Info**

Displays file information including: type, location, and size; modification and creation dates; and file attributes.

## **Virus Info**

Displays the virus name and attributes.

## VirusScan DOS Command-line Options

The following table lists all of the options you can use when you're running the DOS command-line program, Scan. To run Scan, first use the cd command to change directories to the directory where VirusScan is installed. Then, type scan /? to display a list of options and descriptions of how they can be used.

### Notes

When specifying a filename as part of a command-line option, you must include the full path to the file if it is not located in the directory where VirusScan is installed.

These options are only available from the DOS command-line.

### Tip

To scan all system drives (including compressed drives and locally mapped CD-ROM and PCMCIA drives—but not diskettes) for known viruses, enter the following command:

```
scan /adl
```

|              |   |
|--------------|---|
| /? or /HELP  | Does not scan. Instead, displays a list of VirusScan command-line options with a brief description of each. Use either of these options alone on the command line (with no other options).  |
| /ADL         | Scans all local drives (including compressed, CD-ROM, and PCMCIA drives, but not diskettes), in addition to those specified on the command line.<br>To scan both local and network drives, use /ADL and /ADN together in the same command line.   |
| /ADN         | Scans all network drives for viruses, in addition to those specified on the command line.<br>To scan both the local drives and network drives, use /ADL and /ADN together in the same command line.   |
| /AF filename | Stores validation/recovery codes in <i>filename</i> .<br>Helps you detect new or unknown viruses. /AF logs validation and recovery data for executable files, the boot sector, and Master Boot Record on a hard disk or diskette in a file you specify. The log file is about 89 bytes per file validated. You must specify a filename, which can include the full path. If the target path is a network drive, you must have rights to create and delete files on that drive. If filename exists, VirusScan updates it. /AF adds about 300% more time to scanning.<br><br><i>/AF performs the same function as /AV, but stores its data in a separate file rather than changing the executable files themselves.</i><br><i>The /AF option does not store any information about the Master Boot Record or boot sector of the drive being scanned.</i> |
| /ALL         | Overrides the default settings by scanning all files.<br>This option substantially increases the scanning time required. Use it if you have found a virus or suspect one.<br><br><i>The list of extensions for standard executables has changed from previous releases of VirusScan.</i>  |
| /APPEND      | Used in conjunction with /REPORT, appends the report message text to the specified report file, if it exists. Otherwise, the /REPORT option overwrites the specified report file, if it exists.   |
| /AV          | To help you detect and recover from new or unknown viruses, /AV adds recovery and validation data to each standard executable file (.EXE, .COM, .SYS, .BIN, .OVL, and .DLL), increasing the size of each file by 98 bytes. To update files on a shared network drive, you must have update  |

access rights.

To exclude self-modifying or self-checking files, and damaged files that might cause false alarms, use the /EXCLUDE option. Using any of the /AV, /CV, or /RV options together in the same command line returns an error.

*The /AV option does not store any information about the Master Boot Record or boot sector of the drive being scanned.*

/BOOT

Scans only the boot sector and Master Boot Record on the specified drive.

/CF filename

Helps you detect new or unknown viruses. Checks validation data stored by the /AF option in filename. If a file or system area has changed, VirusScan reports that a viral infection may have occurred. The /CF option adds about 250% more time to scanning.

Using any of the /AF, /CF, or /RF options together in a command line returns an error.

*Some older Hewlett-Packard and Zenith PCs modify the boot sector each time the system is booted. If you use /CF, VirusScan continuously reports that the boot sector has been modified even though no virus may be present. Check your computer's reference manual to determine whether your PC has self-modifying boot code.*

/CONTACTFILE filename

Identifies a file containing a message string to display when a virus is found. This option is especially useful in network environments, because you can easily maintain the message text in a central file rather than on each workstation.

Any character is valid except a backslash (\). Messages that begin with a slash (/) or a hyphen (-) should be placed in quotation marks.

/CV

Helps you detect new or unknown viruses. Checks validation data added by the /AV option. If a file is modified, VirusScan reports that a viral infection may have occurred. The /CV option adds about 50% more time to scanning.

Using any of the /AV, /CV, or /RV options together in the same command line returns an error.

/EXCLUDE filename

*The /CV option does not check the boot sector for changes.*

Excludes any files listed in filename from the scan. This option allows you to exclude files from /AF and /AV validation and /CF and /CV checking. Self-modifying or self-checking files can cause a false alarm during a scan.

/FAST

Speeds up the scan.

Reduces scanning time by about 15%. Using the /FAST option, VirusScan examines a smaller portion of each file for viruses.

Using /FAST might miss some infections found in a more comprehensive (but slower) scan. Do not use this option if you have found a virus or suspect one.

/FREQUENCY hours

The number of hours that must occur between subsequent successful scans (Example: /FREQUENCY 1).

In environments where the risk of viral infection is very low, use this option to prevent unnecessary or too-frequent scans. The lower the number of hours specified, the greater the scan frequency and the greater your protection against infection.

/LOAD filename

Performs a scan using the information saved in filename.

You can store all custom settings in a separate configuration file (an ASCII text file), then use

/LOAD to load those settings from that file.



**/LOCK** Halts the system to stop further infection if VirusScan finds a virus.  
**/LOCK** is appropriate in highly vulnerable network environments, such as open-use computer labs. If you use **/LOCK**, we recommend you use it with **/CONTACTFILE** to tell users what to do or whom to contact if a virus is found and the system locks up.

**/LOG** Stores the time and date VirusScan is being run by updating or creating a file called SCAN.LOG in the root of the current drive.

**/MANY** Scans multiple diskettes consecutively in a single drive. VirusScan prompts you for each diskette. Once you have established a virus-free system, use this option to check multiple diskettes quickly.  
 The VirusScan program should reside on a disk that will not be removed during the scan.  
 For example, if you are scanning disks in the computer's A: drive, and you are running the program from a disk in the A: drive, the program will become unavailable as soon as you remove the diskette to put another in. The following command causes an error during execution:  
 a:\scan a: /many

**/MEMEXCL** Exclude memory area from scanning. (The default is A000-FFFF, 0000=Scan all.)  
 This command-line option has been added to prevent VirusScan from checking areas in upper memory which might contain memory-mapped hardware and might cause false alarms.

**/MOVE directory** Moves all infected files found during a scan to the specified directory. To preserve drive and directory structure, this option has no effect if the Master Boot Record or boot sector is infected, since these are not actually files.

**/NOBEEPS** Disables the tone that sounds whenever VirusScan finds a virus.

**/NOBREAK** Disables ctrl-c and ctrl-break during scans.  
 Users will not be able to halt scans in progress using ctrl-c or ctrl-break. Use this option in conjunction with **/LOG** to create a meaningful audit trail of regularly scheduled scans.

**/NOCOMP** Skips checking of [compressed files](#).  
 Reduces scanning time when a full scan is not needed. By default, VirusScan checks compressed files by decompressing each file in memory and checking for virus signatures.

**/NODDA** No direct disk access.  
 Prevents VirusScan from accessing the boot record. This feature has been added to allow VirusScan to run under Windows NT.  
 You might need to use this option on some device-driven drives.

**/NOEMS** Prevents VirusScan from using expanded memory (LIM EMS 3.2), ensuring that EMS is available to other programs.

**/NOEXPIRE** Disables the "expiration date" message if the VirusScan data files are out of date.

**/NOMEM** Reduces scan time by omitting all memory checks for viruses. Use **/NOMEM** only when you are absolutely certain that your computer is virus-free.  
 VirusScan can check system memory for all critical known computer viruses that can inhabit memory. In addition to main memory from 0kb to 640kb, VirusScan checks system memory from 640kb to 1088kb that can be used by computer viruses on 286 and later systems. Memory above 1088kb is not

|                     |   |
|---------------------|---|
|                     | addressed directly by the processor and is not presently susceptible to viruses.  |
| /PAUSE              | <p>Enables screen pause.</p> <p>If you specify /PAUSE, the "Press any key to continue" prompt appears when VirusScan fills up a screen with messages (for example, when you're using the /SHOWLOG or /MIRLIST options). Otherwise, by default, VirusScan fills and scrolls a screen continuously without stopping, which allows VirusScan to run on PCs with many drives or that have severe infections without requiring you to attend.</p> <p>We recommend that you omit /PAUSE when keeping a record of VirusScan's messages using the report options (/REPORT, /RPTCOR, /RPTMOD, and /RPTERR).</p>                                |
| /PLAD               | <p>Preserve last access dates (on proprietary drives only).</p> <p>Prevents changing the last access date attribute for files stored on a network drive in a proprietary network. Normally, proprietary network drives update the last access date when VirusScan opens and examines a file. However, some tape backup systems use this last access date to decide whether to back up the file. Use /PLAD to ensure that the last access date does not change as the result of scanning.</p>  |
| /REPORT<br>filename | <p>Creates a report of infected files and system errors.</p> <p>Saves the output of VirusScan to filename in ASCII text file format. If filename exists, /REPORT erases and replaces it (or, if you use /APPEND, adds the report information to the end of the existing file).</p> <p>You can include the destination drive and directory (such as D:\VSREPRT\ALL.TXT), but if the destination is a network drive, you must have rights to create and delete files on that drive. You can also use /RPTALL, /RPTCOR, /RPTMOD, and /RPTERR to add scanned files, corrupted files, modified files, and system errors to the report.</p> |
| /RF filename        | <p>Removes recovery and validation data from filename created by the /AF option.</p> <p>If filename resides on a shared network drive, you must be able to delete files on that drive. Using any of the /AF, /CF, or /RF options together in the same command line returns an error.</p>  |
| /RPTALL             | <p>Adds list of files scanned to the report file (used with /REPORT).</p>   |
| /RPTCOR             | <p>When used in conjunction with /REPORT, adds the names of corrupted files to the report file.</p> <p>A corrupted file may be a file that has been damaged by a virus. You can use /RPTCOR with /RPTMOD and /RPTERR on the same command line.</p> <p><i>There may be false readings in some files that require an overlay or another executable to run properly (that is, a file that is not executable on its own).</i></p>   |
| /RPTERR             | <p>Adds a list of system errors to the report file. This option is used in conjunction with /REPORT.</p> <p>System errors include problems reading or writing to a diskette or hard disk, file system or network problems, problems creating reports, and other system-related problems. You can use /RPTERR with /RPTCOR and /RPTMOD on the same command line.</p>   |
| /RPTMOD             | <p>Adds list of modified files to the report file. This option is used in conjunction with /REPORT.</p> <p>VirusScan identifies modified files when the validation/recovery</p>   |

codes do not match (using the /CF or /CV options). You can use /RPTMOD with /RPTCOR and /RPTERR on the same command line.

- /RV** Removes validation and recovery data from files validated with the /AV option.  
To update files on a shared network drive, you must have access rights to update them. Using any of the /AV, /CV, or /RV options together in the same command line returns an error.
- /SHOWLOG** Displays the contents of SCAN.LOG.  
SCAN.LOG stores the time and date VirusScan is being run by updating or creating a file called SCAN.LOG in the current directory and the date and time of previous scans that have been recorded in the SCAN.LOG file using the /LOG switch. The SCAN.LOG file contains text and some special formatting. To pause when the screen fills with messages, specify the /PAUSE option.
- /SUB** Scans subdirectories inside a directory.  
By default, when you specify a directory to scan rather than a drive, VirusScan will examine only the files it contains, not its subdirectories. Use /SUB to scan all subdirectories inside any directories you have specified. Do not use /SUB if you are scanning an entire drive.
- /VIRLIST** Displays the name and a brief description of each virus that VirusScan detects. To pause when the screen fills with messages, specify the /PAUSE option. Use /VIRLIST alone or with /PAUSE on the command line.  
You can save the list of virus names and descriptions to a file by redirecting the output of the command. For example, in DOS, enter:  
scan /virlist > filename.txt  
*Because VirusScan can detect many viruses, this file is more than 250 pages long.*

Context-sensitive, below

## Detection Page

To select file locations and file types to scan, complete the following procedure:

1. To add a scan location, click **Add**. The Add Scan Item dialog box is displayed.

To scan your computer, all removable media, all fixed disks, or all network drives, select the Select Item to Scan option button and the corresponding option from the drop down box. Click **OK**.

To select a specific drive or directory, select the Select Drive or Directory option button. Enter the drive or directory or click **Browse** to choose a directory. To scan the item's subdirectories, select the Include Subdirectories checkbox.

Click **OK**.

2. Repeat Step 1 until all scan locations are entered.
3. Select the File types to scan.

To scan all file types, select All Files.

To scan program files only, select Program Files Only. Program files are file types that are most susceptible to virus infection (.EXE, .COM, .DO?, .XL?). To add additional file types to the program files list, see [Program Files](#).

4. To scan [compressed files](#), select the Compressed Files checkbox.
5. To continue configuring this scan, select another property page. To begin scanning, click Scan Now. To save these changes as a VirusScan Settings Configuration file (VSC), select Save Settings from the File menu. To save these changes as the default scanning profile, select Save As Default. To exit without scanning or saving the changes, select Exit from the File menu.

## Action Page

To select how VirusScan responds to an infected file, complete the following procedure.

1. Select from the following:

[Prompt for action](#)

[Move infected files to a directory](#)

[Clean infected files](#)

[Delete infected files](#)

[Continue Scanning](#)

2. To continue configuring this scan, select another property page. To begin scanning, click Scan Now. To save these changes as a VirusScan Settings Configuration file (VSC), select Save Settings from the File menu. To save these changes as the default scanning profile, select Save As Default. To exit without scanning or saving the changes, select Exit from the File menu.

## Alert Page

To select alerting options, complete the following procedure.

1. To configure VShield to send notifications to servers running NetShield, select the Send Network Alert checkbox. Enter the path to the server's [Centralized Alerting](#) directory or click **Browse** to locate the directory.

2. To configure VirusScan to notify you of virus activity, select from the following:

For VirusScan to sound an audible alert, select the Sound Audible Alert checkbox.

For VirusScan to send a custom message, select the Display Custom Message checkbox and enter a custom message (up to 256 characters).

3. To continue configuring this scan, select another property page. To begin scanning, click Scan Now. To save these changes as a VirusScan Settings Configuration file (VSC), select Save Settings from the File menu. To save these changes as the default scanning profile, select Save As Default. To exit without scanning or saving the changes, select Exit from the File menu.

## Report Page

The Report page is used to configure how VirusScan maintains historical virus activity information. To configure the Report page, complete the following procedure:

1. Select the Log to File checkbox. Enter a log file name and path or click **Browse** to choose one.
2. To limit the size of the log file, select the Limit Size of Log File checkbox and enter the maximum log file size.
3. Choose which information to include in the log file by selecting each item's checkbox. This information includes:

- Virus detection
- Virus cleaning
- Infected file deletion
- Infected file move
- Session settings
- Session summary
- Date and time
- User name

4. To continue configuring this scan, select another property page. To begin scanning, click Scan Now. To save these changes as a VirusScan Settings Configuration file (VSC), select Save Settings from the File menu. To save these changes as the default scanning profile, select Save As Default. To exit without scanning or saving the changes, select Exit from the File menu.

### See Also

[Viewing the Virus Activity Log](#)



## Exclude Page

To exclude files, directories, or drives from scanning, complete the following procedure:

1. To add an item to exclude from scanning, click **Add**. The Exclude Item dialog box is displayed.

Enter the full path to a file, drive, or directory or click **Browse** to locate one.


To exclude subdirectories from scanning, select the Include Subdirectories checkbox.

To exclude the item from file scanning, select the File Scanning checkbox. To exclude the item from boot sector scanning, select the Boot Sector Scanning checkbox.

2. To edit a scan item, select the item and click **Edit**.
3. To remove a scan item, select the item and click **Remove**.
4. To continue configuring this scan, select another property page. To begin scanning, click Scan Now. To save these changes as a VirusScan Settings Configuration file (VSC), select Save Settings from the File menu. To save these changes as the default scanning profile, select Save As Default. To exit without scanning or saving the changes, select Exit from the File menu.

## Password Protection

To enable password protection, complete the following procedure.

1. Select which property pages to protect. Protected pages are preceded by . Unprotected pages are preceded by



2. Click **Password**. The Specify Password dialog box is displayed.
3. Enter a password, reenter the password, and click **OK**. You are returned to the Password Protection dialog box.
4. Click **OK**. Whenever anyone attempts to access one of the protected pages, they are prompted for a password.

### Notes

To access the VirusScan Property pages, select Unlock Password from the Tools menu and enter the password.

You are prompted for a password once per session.

Passwords are not case-sensitive. For example, if you chose the password "VirusScan"; "VIRUSSCAN", "virusscan", and even "ViRuSsCaN" would be accepted.

### Tip

To disable password protection, simply unlock all property pages and click **OK**.

## Features of VirusScan

- n NCSA-certified scanner assures detection of more than 90% of the viruses identified by the National Computer Security Association and 100% of the viruses found "in the wild." See the NCSA Website, [www.NCSA.com](http://www.NCSA.com), for certification status.
- n VShield, VirusScan's on-access scanner, provides real-time identification of both known and unknown viruses upon file access, create, copy, rename, and run; disk insert; system startup; and system shut down.
- n On-demand scanning provides for user-initiated detection of known [boot](#), [file](#), [mutation](#), [multi-partite](#), [stealth](#), [encrypted](#), and [polymorphic](#) viruses located within files, drives, and diskettes.
- n Code Trace™, Code Poly™, and Code Matrix™ Scanning employ McAfee's proprietary technologies for pinpoint virus identification accuracy.
- n VirusScan can be configured for an automated response on virus detection, including notification, logging, deletion, isolation, or cleaning.
- n The VirusScan Scan Window, Activity Log, and Virus List provide details of scan results, as well as information about detected viruses.
- n Monthly updates of virus signatures are included with the purchase of a McAfee subscription license to assure the best detection and removal rates. See [Keeping VirusScan Updated](#).

### See Also

[About Viruses](#)  
[Types of Viruses](#)  
[Why Scan for Viruses](#)  
[About McAfee](#)

## About Viruses

Computer viruses, most users know, can have a devastating impact on productivity. What many of those same users don't know is basic information that could help them protect themselves from infection—such as where viruses came from and how they operate.

### In the beginning

The conceptual foundations for viruses have been around much longer than the virus threat itself. Although virus historians disagree on the specific whens and wheres, it is generally accepted that the ideas were born when computers were still huge and expensive—the domain of large corporations and the government, not the public. And while many of the viruses circulating today are malicious, destruction of data was not part of the original premise.

The idea was that if one could create a computer program that could make copies of itself, or self-replicate, it might also be possible for that program to evolve. If an error were to occur in the replication process, the resulting code (the bits of information that make up the program) would be mutant. Just as mutant genetic code is what disposes a biological virus to either be more or less able to survive and propagate, mutant digital code might dispose a computer virus to be more or less able to survive in the computer environment. Given enough time, the logical extension of the theory goes, a computer virus could evolve into something approaching artificial intelligence. Science fiction suddenly starts to look more like science and less like fiction.

### What viruses really are

At its core, a virus is simply a program with one goal: self-replication. Part of achieving that goal is remaining undetected. If a virus is found by a user, it is likely to get deleted, which puts quite a damper on any self-replicating plans. Just like any other program, a virus has to be run to do its work. And since a user will not run a virus intentionally, the virus has to attach itself to a file that the user will run. That includes executable files and document files with embedded macros, as we will see in a couple of pages. For a virus to infect any other type of file—say, a plain text file—would be counter-productive: Remember, replication is its primary objective.

### Computers with the sniffles?

Consider the similarities between computer and biological viruses. A computer virus infects a host program, just as a biological virus infects a host cell. It writes its own code in among the pieces of code that make up the host program. Then, in much the same way as a biological virus uses resources from its host organism to reproduce, a computer virus runs each time the infected host is run, and makes copies of itself. Those copies then infect other programs, and the cycle begins again.

Just as biological viruses have detrimental effects, so do their computer counterparts. The first computer viruses were simply experiments by research scientists to test the theory—to see if it could be done. They proved the theory, but also discovered that viruses had some unfortunate side effects. Viruses got in the way of some of the normal processes of the computer and caused erratic behavior. Many viruses are now specifically programmed to perform some function outside of self-replication. This function, called the payload, can be as innocuous as displaying a message on the computer's monitor or as harmful as destroying data on the system's hard disks. It is delivered when the trigger, an event such as a particular combination of keystrokes, a certain date or a pre-determined number of actions, occurs.

### Who writes viruses?

The reason for this change in the behavior of viruses—from innocent experiment to malicious sneak attack—is a result of a change in the type of people who write them. Virus code is now developed by many people who are less interested in studying the possibility of artificial intelligence than in inflicting harm. Some do it out of spite, some because they aspire to be the underground "mad hacker" romanticized in much of pop culture as a freedom fighter of the digital age. The reasons people write virus code are probably as varied and strange as the reasons people perform other destructive acts.

Some virus writers actually choose to identify themselves, such as the Pakistani brothers who wrote the Brain virus. The brothers included the name, address, and telephone number of their software company in the viral code. When the payload was delivered, this information would be displayed for the user. Apparently, the brothers wrote the virus to show how widespread software pirating was. They put it on software leaving their office with the idea that wherever the virus spread, so had their software. Of course, what they overlooked was the fact that the virus spread by infecting programs other than the one it left their office in.

Other virus writers are disgruntled employees seeking revenge. Still others are schoolkids who write just to see if they can. The famous Stoned virus is said to have been written by such a youngster. Having written it, he feared the consequences of unleashing it, so he destroyed all copies of the virus except one, which he kept at his house. His younger brother and a couple of friends managed to lay their hands on it though, and infected some disks as a joke. But the infection spread quickly and soon was impossible to stop.

Whatever the motivation, the number of people capable of writing a virus is growing right alongside the computer industry. Those who stand to be affected by virus infection—anyone who uses a computer—should be alert and wary.

## **Only getting worse**

In part, the fact that there are so many of us who need to be on the alert today is what makes virus proliferation possible. When the computer world was made up entirely of huge expensive machines, a virus did not have very far to go once it got started. But with the advent of the personal computer, viruses suddenly had a lot of places to go. The rapid growth of the Internet, the capability to attach files to e-mail messages, and the increasing degree to which the world depends on its computers all make conditions ever-better for the spread of computer viruses.

## **New developments**

There are other reasons to be especially wary these days. Viruses get increasingly complex and advanced as computers on the whole do the same. Just in the last few years, sophisticated and dangerous new virus families have appeared, such as polymorphic viruses and macro viruses. Polymorphic viruses are especially tricky because they change each time they infect a new file. Where once anti-virus software could search for viruses by "signatures" (chunks of code unique to each virus), software must now be able to detect polymorphic viruses that change their signature each time they infect a file.

Macro viruses infect documents and document templates—new territory for viruses. Documents used to be safe from viral attack because until a few years ago, a document file didn't have any executable code in it. Now that software like Microsoft Word and Microsoft Excel has embedded macro capabilities, viruses can infect documents created by that software through the macro language.

All that just in the last few years. And viruses as a serious threat have only been around for about ten years. To imagine what is in store as the computer becomes more complicated and more a part of everyday life is frightening. Luckily, you have purchased the best protection against infection available today. And with McAfee's outstanding support and worldwide anti-virus research teams, you can make sure your protection keeps up with the ever-changing computer world.

### **See Also**

[Features of VirusScan](#)

[Types of Viruses](#)

[Why Scan for Viruses?](#)

[About McAfee](#)

## Types of Computer Viruses

A virus is a software program that attaches itself to another program on a disk or lurks in a computer's memory and spreads from one program to another.

In addition to self-replication, viruses have the capability to damage data, cause computers to crash, and display offending or bothersome messages.

[Boot Virus](#)

[File Virus](#)

[Stealth Virus](#)

[Multi-partite Virus](#)

[Mutating Virus](#)

[Encrypted Virus](#)

[Polymorphic Virus](#)

### See Also

[About Viruses](#)

[Features of VirusScan](#)

[Why Scan for Viruses](#)

[About McAfee](#)

## **Boot Virus**

A boot virus copies itself from the boot sector of one drive to another (e.g. floppy drive to hard drive).

## **File Virus**

A file virus attaches itself to a program. Whenever the program runs, the virus attaches itself to other programs.



## Stealth Virus

A stealth virus hides itself to evade detection. A stealth virus may be a [boot virus](#) or a [file virus](#).

## Multi-partite Virus

A multi-partite acts like a [boot virus](#) and a [file virus](#) by spreading through boot sectors and files.

## Mutating Virus

Mutating viruses change their shape to avoid detection. Many mutating viruses are also [encrypted viruses](#).

## Encrypted Virus

Encrypted viruses encrypt part of their code to avoid detection. Many encrypted viruses are also [mutating viruses](#).

## **Polymorphic Virus**

Polymorphic viruses are similar to mutating viruses. Upon each instance of copying itself, a polymorphic virus slightly changes its code to avoid detection.

## Why Scan for Viruses?

In today's environment, [safe computing practices](#) are no longer a luxury—they are a necessity.

Computer viruses no longer attack your computing environment exclusively. They attack all computing environments you are in contact with through diskettes, networks, modems, and files you share with coworkers.

Consider the value of the data on your computer. It is probably irreplaceable or would require a significant amount of time and money to replace. Consider the value of the data on all of the computers you contact, the computers those computers contact, and so on.

McAfee's virus scanning solutions should top your list of safe computing practices. Scheduled periodic scans of your computer offer added assurance you are taking precautions against virus infection.

### See Also

[About Viruses](#)

[Features of VirusScan](#)

[Types of Viruses](#)

[About McAfee](#)

## About McAfee

Founded in 1989, McAfee Inc. is the leading provider of productive computing tools for DOS, OS/2, UNIX, and Windows environments. Our anti-virus products are used by more than 16,000 corporations worldwide. Our utility products provide data security, automated version updating, and system inspection and editing. McAfee is also the pioneer and leading provider of electronically distributed software. All of McAfee's products may be purchased through dealers or downloaded from bulletin board systems and on-line services around the world.

McAfee does not stop at developing the world's best anti-virus and utility products. We back them with the industry's best service and technical support. Product support is provided by a full-time staff of virus researchers, programmers, and support professionals and delivered directly by McAfee or our network of authorized agent offices in more than 50 countries worldwide.

### See Also

[About Viruses](#)

[Features of VirusScan](#)

[Types of Viruses](#)

[Why Scan for Viruses](#)

## Removing a Virus Found in Memory

If VirusScan discovers a virus in memory, complete the following procedure:

1. Turn off your computer.
2. Do not reboot using the reset button or Ctrl+Alt+Delete; if you do, some viruses might remain intact or drop their destructive payloads.
3. Place the McAfee Emergency Diskette into the floppy disk drive. See [Making an Emergency Diskette](#).
4. Turn on your computer.
5. Follow the on-screen instructions and remove any viruses found.

## If viruses were removed

If VirusScan successfully removes all the viruses, shut down your computer and remove the diskette. Begin the installation procedure described in the VirusScan User's Manual.

To find and eliminate the source of infection, scan your diskettes immediately after installation.

## If viruses were not removed

If VirusScan cannot remove a virus, the following message is displayed:

Virus could not be removed.

If the virus was found in a file and cannot be removed by VirusScan, you should delete the file and repeat the steps described above. If the virus was found in the Master Boot Record, refer to documents on the McAfee Web Site related to manually removing viruses. For more information, see [Contacting McAfee](#).



## Understanding False Alarms

A false alarm is a report of a virus in a file or in memory when a virus does not actually exist. False alarms are more likely if you are using more than one brand of virus protection software, because some anti-virus programs store their virus signature strings unprotected in memory.

Always assume that any virus found by VirusScan is real and dangerous, and take necessary steps to remove it from your system. If, however, you have reason to believe that VirusScan is generating false alarms (for example, it has detected a virus in only one file that you have been using safely for years), refer to the list of potential sources below:

- Ⓜ If more than one anti-virus program is running, VirusScan may report a false alarm. Set up your computer so that only one anti-virus program is running at a time. Remark out lines in the AUTOEXEC.BAT file that refer to other anti-virus programs. Turn off your computer, wait a few seconds, and turn it on again to make sure that all code from other anti-virus programs is cleared from memory.
- Ⓜ Some BIOS chips include an anti-virus feature that could be the source of false alarms. Refer to your computer's reference manual for details.
- Ⓜ If you set up validation/recovery codes, subsequent scans can detect changes in validated files. This can trigger false alarms if the executable files are self-modifying or self-checking. When using validation codes, specify an exceptions list to exclude such files from checking.
- Ⓜ Some older Hewlett-Packard and Zenith PCs modify the boot sector each time the system is booted. VirusScan may detect these modifications as a possible infection, even though no virus may be present. Check your computer's reference manual to determine if your PC has self-modifying boot code. To solve this problem, save validation/recovery information to the executable files themselves; this method does not save information about the boot sector or Master Boot Record.
- Ⓜ VirusScan may report viruses in the boot sector or Master Boot Record of certain copy-protected diskettes.

## Keeping VirusScan Updated

To offer the best virus protection possible, McAfee continually updates the files VirusScan uses to detect viruses. After a certain time period, VirusScan will notify you to update the virus definition database. For maximum protection, it is important to update these files on a regular basis.

What is a data file?

The files CLEAN.DAT, NAMES.DAT, and SCAN.DAT all provide virus information to the VirusScan software and make up the data files referred to in this section.

Why would I need a new data file?

New viruses are discovered at a rate of more than 100 per month. Often, these viruses are not detected using older data files. The data files that came with your copy of VirusScan may not detect a virus that was discovered after you bought the product.

McAfee's virus researchers are working constantly to update the data files with more and newer virus definitions. The new data files are released approximately every four to six weeks.

To update your McAfee data files, take the following steps:

- 1 Download the data file (for example, DAT-9705.ZIP) from one of McAfee's electronic services. On most services, it is located in the anti-virus area.
- 2 Copy the file to a new directory.
- 3 The file is in a compressed format. Decompress the file using any PKUNZIP-compatible decompression software. If you don't have the decompression software, you can download PKUNZIP (shareware) from McAfee electronic sites.
- 4 Locate the directories on the hard drive where VirusScan is currently loaded. Typically, the files are stored in C:\MCAFEE\VIRUSCAN.
- 5 Copy the new files into the directory or directories, overwriting the old data files.  
*Some of the data files may be located in different directories. If so, place each updated file in its appropriate directory.*
- 6 Reboot your computer so that changes take place immediately.

### Notes

McAfee cannot guarantee backward compatibility of the virus signature files with a previous version's software. By subscribing to a maintenance plan and upgrading your VirusScan software, you ensure complete virus protection for at least one year after your VirusScan purchase.

Please note that your ability to access these updates is legally restricted by the maintenance terms outlined in the README.1ST file accompanying the software and detailed in the software license agreement.

## Contacting McAfee

Select from the following:

[Customer Service](#)

[Technical Support](#)

[Training](#)

## Customer Service

To order products or obtain product information, we invite you to contact our Customer Care department at (408) 988-3832 or at the following address:

McAfee, Inc.  
2710 Walsh Avenue  
Santa Clara, CA 95051-0963  
U.S.A.

### See Also

[Technical Support](#)

[Training](#)

## Technical Support

McAfee is famous for its dedication to customer satisfaction. McAfee has continued this tradition by investing considerable time and effort to make our website a valuable resource for updating McAfee software and obtaining the latest news and information. For technical support information and issues, we encourage you to visit our website first.

**World Wide Web**      <http://www.mcafee.com>

To access the McAfee Website, [click here](#).

If you do not find what you need or do not have access to the Web, try one of McAfee's automated services.

|  |  |
|--|--|
| <b>Automated Voice<br/>and Fax Response<br/>System</b>               | (408) 988-3034   |
| <b>Internet<br/>McAfee BBS</b>                                       | support@mcafee.com<br>(408) 988-4004<br>1200 bps to 28,800 bps<br>8 bits, no parity, 1 stop bit<br>24 hours, 365 days a year |
| <b>CompuServe<br/>America Online<br/>Microsoft Network<br/>(MSN)</b> | GO MCAFEE<br>Keyword MCAFEE<br>MCAFEE  |

If the automated services did not solve your problem, you may contact McAfee Monday through Friday between 6:00 A.M. and 6:00 P.M. Pacific time.

|              |                |
|--------------|----------------|
| <b>Phone</b> | (408) 988-3832 |
| <b>Fax</b>   | (408) 970-9727 |

To speed the process of helping you use our products, please note the following before you call:

- Product name and version
- Computer brand, model, and any additional hardware
- Operating system type and version
- Network type and version
- Contents of your AUTOEXEC.BAT, CONFIG.SYS, and system LOGIN script
- Specific steps to reproduce the problem, if applicable

### See Also

[Customer Service](#)

[Training](#)

## McAfee Training

For information about scheduling on-site training for any McAfee product, call (800) 338-8754.

### See Also

[Customer Service](#)

[Technical Support](#)

## Preventing Virus Infection

VirusScan is an effective tool for preventing, detecting, and recovering from virus infection. It is most effective, however, when used in conjunction with a comprehensive computing security program that includes a variety of safety measures, such as regular backups, meaningful password protection, user training, and awareness. To create a secure system environment and minimize your chance of infection, McAfee recommends that you review the following topics:

[Detecting New Viruses](#)

[Making an Emergency Diskette](#)

[Write Protecting Diskettes](#)

## Making an Emergency Diskette

The Emergency Disk is a very important part of proper virus prevention. Should your system become infected, an Emergency Disk will enable you to start your computer from a clean environment.

To make a boot diskette, your system must be virus-free. Any virus residing in your system could be transferred to your boot diskette and reinfect your system. If your computer is infected, go to another computer, scan it, and if it is virus-free, complete one of the procedures below.

To make an Emergency Disk, select from the following:

[Automatically Creating an Emergency Diskette](#)

[Manually Creating an Emergency Diskette](#)



## Automatically Creating an Emergency Diskette

To use VirusScan's utility for automatically creating an Emergency Disk, complete the following procedure:

1. Open the VirusScan program group and double-click the Create Emergency Diskette icon, or [click-here](#).
2. Insert a blank 3.5" floppy disk into the A: drive.
3. Click **OK**. The Utility begins creating the Emergency Disk.
4. When the Utility is finished, remove the disk, [write-protect](#) it, label it "VirusScan Emergency Disk", and store it in a safe place.

## Manually Creating an Emergency Disk

Start this procedure from a command prompt (C:\>). If you are in Windows, you must open a DOS shell to get the prompt.

1. Insert a blank diskette in drive A:.
2. Format the diskette by typing the following command at the C:\> prompt:

```
format a: /s /u
```

This overwrites any information already on the diskette. If you are using DOS 5.0 or earlier, do not type the /u. If you are unsure of which version you are using, type ver at the C:\> prompt.

3. When the system prompts you for a volume label, enter an appropriate name using no more than eleven characters.
4. Change to the VirusScan directory.
5. Copy the command-line version of VirusScan to the diskette by typing the following commands at the prompt:

```
copy scan.exe a:
```

```
copy scan.dat a:
```

```
copy clean.dat a:
```

```
copy names.dat a:
```

6. Change back to the root directory by typing cd\.
7. Copy useful command-line programs to the diskette by typing one of the following commands at the C:\> prompt:

```
copy c:\dos\chkdsk.* a:
```

8. Repeat the previous step for any other useful programs, including:

```
debug.*  
diskcopy.*  
fdisk.*  
format.*  
label.*  
mem.*  
sys.*  
xcopy32.*
```

9. Label and write protect this diskette, then store it in a secure place. For more information, see [Write Protecting a Diskette](#).

### Note

If you use a disk compression utility, be sure to copy the drivers required to access the compressed drives onto the clean boot diskette. For more information about these drivers, see the documentation which accompanied the utility.

## Write Protecting a Diskette

Floppy diskettes are convenient, portable devices for storage and retrieval of computer data. Diskettes are used to save files (write) and recover files (read). They are also the most common vehicle viruses use to invade your computer's system.

One way to help prevent infection via floppy diskette is to write protect diskettes you are using for read-only data. If your system becomes infected with a virus, the write-protection feature keeps your diskettes from becoming infected, preventing reinfection after your system is cleaned.

Any diskettes that are not write protected should be scanned and cleaned before you write protect them.

Select from the following:

[Write protecting 5.25" floppy diskettes](#)

[Write protecting 3.5" floppy diskettes](#)

## Write Protecting 5.25" Floppy Diskettes

1. Position the diskette face up with the label facing away from you.
2. The notch on the upper right hand side is called the write-protect notch. When this notch is visible, you can read and write data to and from the diskette. When the notch is covered with an adhesive tab, you can no longer write to the diskette. This prevents you from accidentally changing the data and prevents viruses from infecting the diskette.
3. To write protect the diskette, cover the notch with an adhesive tab or tape.

## Write Protecting 3.5" Floppy Diskettes

1. Position the diskette face down with the metal slide facing you.
2. Examine the small rectangular hole on the upper left side. There should be a square, plastic tab that you can slide up and down across the hole.
3. To write protect the diskette, slide the plastic tab upward toward the edge of the diskette so that the hole is open.
4. If there is no tab and the hole is open, the diskette is write protected.

## **Compressed Files**

When enabled, VirusScan unpacks LZexe and PKLite compressed files and scans the decompressed form. Files with .ZIP and .LZH extensions are not scanned for viruses.

## Move Infected Files

When this option is selected, VirusScan automatically moves infected files to the specified directory. To select a directory, enter the directory location or click **Browse** to select a directory.

After the file is moved to the quarantine directory, you can clean the file or restore the file from backups and return it to its original location. To return the file to the original directory location, refer to the VSHIELD log file (VSHLOG.TXT) or the VirusScan On-demand Scanning log file (VSCLOG.TXT).

## **Clean Infected Files**

When this option is selected, VirusScan will automatically attempt to remove the virus from the infected file.



## **Delete Infected Files**

When this option is selected, VirusScan will automatically delete infected files. After VirusScan deletes the infected files, you can restore them from backup.

If you select this option, make sure to enable report logging. This will ensure you have a record of which files were deleted, so you can restore them from backups.

## **Continue Scanning**

When this option is selected, VirusScan continues scanning without taking any action. When the scan is complete, you can manually respond to each infected file in the VirusScan Main Window.

This option is not recommended for unattended machines.

## **Prompt for Action**

When this option is selected, VirusScan will prompt you for action for each infected file.

## **Safe Computing Practices**

Safe computing practices include:

- Virus protection
- Regular backups
- Meaningful password protection
- Training and awareness

## Centralized Alerting

Centralized Alerting is McAfee's enterprise-wide virus notification solution. Once configured, workstations running VirusScan send virus notifications to servers running NetShield. This helps administrators locate the source of the virus infections and prevent them from spreading.

To configure Centralized Alerting, do the following:

1. Ask a system administrator for the name of a server running NetShield and its Centralized Alerting directory.
2. Make sure you have rights to this directory.
3. Configure VShield and VirusScan tasks to send network messages to this directory.

## Program Files

To add or remove file types from the program files list, click **Extensions**. The Program File Extensions dialog box is displayed.

1. To add a file extension, click **Add**. Enter a new file extension to scan and click **OK**. Repeat this procedure until all desired file extensions are entered.
2. To delete an extension, select it and click **Delete**.
3. To return to the default extensions, click **Default**.

When you are finished editing the list of file extensions, click **OK**.

## **Virus Name**

Lists the name of the virus

## **Infects**

Indicates the types of files infected by this virus. This may include:

Executables (.EXE)  
COM files (.COM)  
Word files (.DO?)  
Excel files (.XLS)



## **Virus Size**

Indicates the size of the virus in kilobytes.

## **Memory Resident**

Indicates whether the virus resides in memory.

## Encrypted

Indicates whether this is an [encrypted virus](#).

## Polymorphic

Indicates whether this is an [polymorphic virus](#).

## **Repairable**

Indicates whether files infected by this virus are repairable.

## **Macro Virus**

Indicates whether this is a Word or Excel macro virus.

## Type

Specifies the type of file that is infected (e.g., Executable, Word, Excel)

## **Location**

Specifies the directory location of the infected file.



## Size

Specifies the size of the infected file.

## **MS-DOS Name**

Specifies the name of the infected file.

## **Created**

Specifies the date the infected file was created.

## **Modified**

Specifies the date the infected file was last modified.

## **Accessed**

Specifies the date the infected file was last accessed.

## **Read-only**

Specifies whether the file is read-only.

## Hidden

Specifies whether the file is hidden.

## **Archive**

Specifies whether the file is an archive file.



## **System**

Specifies whether the file is a system file.

## VirusScan DOS Error Levels

When you run VirusScan in the DOS environment, a DOS error level is set. You can use the ERRORLEVEL in batch files to take different actions based on the results of the scan. For more information, see your DOS operating system documentation.

VirusScan can return the following error levels:

| <b>ERRORLEVEL</b> | <b>Description</b>  |
|-------------------|---|
| 0                 | No errors occurred; no viruses were found.  |
| 1                 | Error occurred while accessing a file (reading or writing).   |
| 2                 | A VirusScan data file is corrupted.   |
| 3                 | An error occurred while accessing a disk (reading or writing).  |
| 4                 | An error occurred while accessing the file created with the /AF option; the file has been damaged.                                  |
| 5                 | Insufficient memory to load program or complete operation.  |
| 6                 | An internal program error has occurred (out of memory error).   |
| 7                 | An error occurred in accessing an international message file (MCAFEE.MSG).  |
| 8                 | A file required to run VirusScan, such as SCAN.DAT, is missing.   |
| 9                 | Incompatible or unrecognized option(s) or option argument(s) specified in the command line.   |
| 10                | A virus was found in memory.  |
| 11                | An internal program error occurred.   |
| 12                | An error occurred while attempting to remove a virus, such as no CLEAN.DAT file found, or VirusScan was unable to remove the virus. |
| 13                | One or more viruses were found in the Master Boot Record, boot sector, or files.  |
| 14                | The SCAN.DAT file is out of date; upgrade VirusScan data files.   |
| 15                | VirusScan self-check failed; it may be infected or damaged.   |
| 16                | An error occurred while accessing a specified drive or file.  |
| 17                | No drive, directory, or file was specified; nothing to scan.  |
| 18                | A validated file has been modified (/CF or /CV options).  |
| 19-99             | Reserved.   |
| 100+              | Operating system error; VirusScan adds 100 to the original number.  |
| 102               | CTRL+C or CTRL+BREAK was used to interrupt the Scan. (You can disable CTRL+C or CTRL+BREAK with the /NOBREAK command-line option.)  |

## VSC File Format

The VSC file is a configuration text file, formatted similarly to the Windows INI file, which outlines VirusScan's settings. Each variable in the file has a name followed by the equal (=) sign and a value. The values define which settings have been selected for VirusScan configuration. The variables are arranged in three groups: ScanOptions, AlertOptions, and ActivityLogOptions. To edit a VSC file, open it with any text editor.

### Note

In Boolean variables, possible values are 0 and 1. The 0 value instructs VirusScan to disable the setting, while 1 indicates that the setting is enabled.

## ScanOptions

| Variable        | Description  |
|-----------------|--|
| bAutoStart      | Type: Boolean (1/0)<br>Instructs VirusScan to start scanning immediately as it is launched<br>Default value: 0                           |
| bAutoExit       | Type: Boolean (1/0)<br>Instructs VirusScan to exit upon scan completion if no viruses are found<br>Default value: 0                      |
| bAlwaysExit     | Type: Boolean (1/0)<br>Instructs VirusScan to always exit upon scan completion<br>Default value: 0                                       |
| bSkipMemoryScan | Type: Boolean (1/0)<br>Instructs VirusScan to skip memory scan<br>Default value: 0   |
| bSkipBootScan   | Type: Boolean (1/0)<br>Instructs VirusScan to skip boot sector scan<br>Default value: 0  |
| bSkipSplash     | Type: Boolean (1/0)<br>Instructs VirusScan to not display the initial splash screen when the application is launched<br>Default value: 0 |

## DetectionOptions

| Variable                    | Description   |
|-----------------------------|---|
| bScanAllFiles               | Type: Boolean (1/0)<br>Instructs VirusScan to scan inside all files<br>Default value: 0   |
| bScanCompressed             | Type: Boolean (1/0)<br>Instructs VirusScan to scan inside <a href="#">compressed files</a><br>Default value: 1                          |
| szProgramExtensions         | Type: String<br>Defines extensions to be scanned<br>Default value: EXE COM DO? XL?  |
| szDefaultProgram Extensions | Type: String<br>Defines extensions to be used as default program extensions during scan configuration<br>Default value: EXE COM DO? XL? |

## AlertOptions

| Variable | Description |
|----------|-------------|
|----------|-------------|

|                    |   |
|--------------------|---|
| bNetworkAlert      | Type: Boolean (1/0)<br>Instructs VirusScan to send a Centralized Alerting notification to a server running NetShield.<br>Default value: 0 |
| szNetworkAlertPath | Type: String<br>Defines the path to the server running NetShield.<br>Default value: none  |
| bSoundAlert        | Type: Boolean (1/0)<br>Instructs VirusScan to sound an alert when a virus is detected<br>Default value: 1                                 |

## ActionOptions

| Variable        | Description  |
|-----------------|--|
| bDisplayMessage | Type: Boolean (1/0)<br>Defines if custom message should be displayed upon virus detection<br>Default value: 0  |
| uScanAction     | Type: Integer (1-5)<br>Instructs VirusScan to take the action specified when a virus is detected<br>Possible values:<br>1 - Prompt for action<br>2 - Move infected files to a folder<br>3 - Clean infected files automatically<br>4 - Delete infected files automatically<br>5 - Continue scanning<br>Default value: 2 |
| bButtonClean    | Type: Boolean (1/0)<br>Instructs VirusScan to give user option of cleaning the file if Prompt for Action is selected and a virus is detected<br>Default value: 1   |
| bButtonDelete   | Type: Boolean (1/0)<br>Instructs VirusScan to give user option of deleting the file if Prompt for Action is selected and a virus is detected<br>Default value: 1   |
| bButtonExclude  | Type: Boolean (1/0)<br>Instructs VirusScan to give user option of excluding the file if Prompt for Action is selected and a virus is detected<br>Default value: 1  |
| bButtonMove     | Type: Boolean (1/0)<br>Instructs VirusScan to give user option of moving the infected file if Prompt for Action is selected and a virus is detected<br>Default value: 1  |
| bButtonContinue | Type: Boolean (1/0)<br>Instructs VirusScan to give user option of continuing the scan if Prompt for Action is selected and a virus is detected<br>Default value: 1   |
| bButtonStop     | Type: Boolean (1/0)<br>Instructs VirusScan to give user option of denying access to the infected file if Prompt for Action is selected and a virus is detected<br>Default value: 1   |
| szMoveToFolder  | Type: String<br>Defines folder to which infected files should be moved<br>Default value: \Infected   |
| szCustomMessage | Type: String<br>Defines custom message to be displayed upon virus  |

detection  
Default value: Your custom message

## ReportOptions

| Variable      | Description  |
|---------------|--|
| bLogToFile    | Type: Boolean (1/0)<br>Defines if scan results should be logged into log file<br>Default value: 0    |
| bLimitSize    | Type: Boolean (1/0)<br>Defines if size of the log file should be limited<br>Default value: 1         |
| uMaxKilobytes | Type: Integer<br>Defines maximum size of the log file in kilobytes<br>Default value: 100             |
| bLogDetection | Type: Boolean (1/0)<br>Defines if scan results should be logged<br>Default value: 1                  |
| bLogClean     | Type: Boolean (1/0)<br>Defines if clean results should be logged<br>Default value: 1                 |
| bLogDelete    | Type: Boolean (1/0)<br>Defines if file delete operations should be logged<br>Default value: 1        |
| bLogMove      | Type: Boolean (1/0)<br>Defines if infected file move operations should be logged<br>Default value: 1 |
| bLogSetting   | Type: Boolean (1/0)<br>Defines if session settings should be logged on shutdown<br>Default value: 1  |
| bLogSummary   | Type: Boolean (1/0)<br>Defines if session summary should be logged on shutdown<br>Default value: 1   |
| bLogDateTime  | Type: Boolean (1/0)<br>Defines if date and time of an event should be logged<br>Default value: 1     |
| bLogUserName  | Type: Boolean (1/0)<br>Defines if user name should be logged<br>Default value: 1                     |
| szLogFileName | Type: String<br>Defines log file name<br>Default value: VSCLOG.TXT                                   |

## ScanItems

| Variable     | Description  |
|--------------|--|
| szScanItem_0 | Type: String<br>Defines item to be scanned<br>Default value: C:\ |

## SecurityOptions

| Variable          | Description   |
|-------------------|---|
| szPasswordProtect | Type: Boolean (1/0)<br>Defines if password protection is enabled. |

szPasswordCRC  
blInheritSecurity

Default value: 0

## ExcludedItems

| Variable   | Description   |
|--|---|
| NumExcludedItems                                 | Type: Integer (0-n)<br>Defines the number of items excluded from on-access scanning<br>Default value: 1   |
| ExcludedItem_x,<br>where x is a zero-based index | Type: String<br>Instructs Vshield to exclude the item from on-access scanning<br>Default value: \Recycled *.* 1 1 *<br>* The string is separated into fields using the pipe ( ) character:<br>Field 1 - Folder portion of item to exclude. Leave blank for a single file anywhere on the system.<br>Field 2 - File portion of the item to exclude. Leave blank if a folder is excluded without a filename.<br>Field 3 - Integer (1-3)<br>Possible values:<br>1 - Exclude from file-access scanning<br>2 - Exclude from boot-record scanning<br>3 - Exclude from both boot-record and file-access scanning<br>Field 4 - Boolean (1/0)<br>Possible values:<br>1 - Instructs VShield to exclude subfolders of the excluded item<br>2 - Instructs VShield to not exclude subfolders |

## VSH File Format

The VSH file is a configuration text file, formatted similarly to the Windows INI file, which outlines VShield's settings. Each variable in the file has a name followed by the equal (=) sign and a value. The values define which settings have been selected for VShield configuration. The variables are arranged in five groups: DetectionOptions, ActionOptions, ReportOptions, General, and ExcludedItems. To edit the VSH file, open it with any text editor.

### Note

In Boolean variables, possible values are 0 and 1. The 0 value instructs VShield to disable the setting, while 1 indicates that the setting is enabled.

## General

| Variable         | Description   |
|------------------|---|
| bCanBeDisabled   | Type: Boolean (1/0)<br>Defines if VShield can be disabled<br>Default value: 1                                   |
| bShowTaskbarIcon | Type: Boolean (1/0)<br>Defines whether VShield taskbar icon is displayed<br>Default value: 1                    |
| bLoadAtStartup   | Type: Boolean (1/0)<br>Defines if VShield should be loaded at system startup<br>Default value: 1                |
| bNoSplash        | Type: Boolean (1/0)<br>Instructs VShield to not show splash screen when program is launched<br>Default value: 0 |

## DetectionOptions

| Variable            | Description   |
|---------------------|---|
| bScanOnExecute      | Type: Boolean (1/0)<br>Instructs VShield to scan when files are run<br>Default value: 1   |
| bScanOnOpen         | Type: Boolean (1/0)<br>Instructs VShield to scan when files are opened<br>Default value: 1  |
| bScanOnCreate       | Type: Boolean (1/0)<br>Instructs VShield to when files are created<br>Default value: 1  |
| bScanOnRename       | Type: Boolean (1/0)<br>Instructs VShield to when files are renamed<br>Default value: 1  |
| bScanOnShutdown     | Type: Boolean (1/0)<br>Instructs VShield to scan the boot record of drive A:<br>when system is shut down<br>Default value: 1          |
| bScanOnBootAccesses | Type: Boolean (1/0)<br>Instructs VShield to scan the boot record of a disk drive<br>the first time it is accessed<br>Default value: 1 |
| bScanAllFiles       | Type: Boolean (1/0)<br>Instructs program to scan inside all files<br>Default value: 0   |
| bScanCompressed     | Type: Boolean (1/0)<br>Instructs program to scan inside <a href="#">compressed files</a>  |

|                            |   |
|----------------------------|---|
| szProgramExtensions        | Default value: 0<br>Type: String<br>Defines extensions to be scanned<br>Default value: EXE COM DO? XL?                                  |
| szDefaultProgramExtensions | Type: String<br>Defines extensions to be used as default program extensions during scan configuration<br>Default value: EXE COM DO? XL? |

## AlertOptions

| Variable           | Description   |
|--------------------|---|
| bNetworkAlert      | Type: Boolean (1/0)<br>Instructs VirusScan to send a Centralized Alerting notification to a server running NetShield.<br>Default value: 0 |
| szNetworkAlertPath | Type: String<br>Defines the path to the server running NetShield<br>Default value: none   |

## ActionOptions

| Variable        | Description  |
|-----------------|--|
| bDisplayMessage | Type: Boolean (1/0)<br>Defines if custom message should be displayed in the Prompt for Action dialog box upon virus detection<br>Default value: 0  |
| uVshieldAction  | Type: Integer (1-5)<br>Instructs VShield to take the action specified when a virus is detected<br>Possible values:<br>1 - Prompt for action<br>2 - Move infected files to a folder<br>3 - Clean infected files automatically (Deny access if files can't be cleaned)<br>4 - Delete infected files automatically<br>5 - Deny access to infected files<br>Default value: 1 |
| bButtonClean    | Type: Boolean (1/0)<br>Instructs VShield to give user option of cleaning the file if Prompt for Action is selected and a virus is detected<br>Default value: 1   |
| bButtonDelete   | Type: Boolean (1/0)<br>Instructs VShield to give user option of deleting the file if Prompt for Action is selected and a virus is detected<br>Default value: 1   |
| bButtonExclude  | Type: Boolean (1/0)<br>Instructs VShield to give user option of excluding the file if Prompt for Action is selected and a virus is detected<br>Default value: 1  |
| bButtonContinue | Type: Boolean (1/0)<br>Instructs VShield to give user option of continuing without taking action if Prompt for Action is selected and a virus is detected<br>Default value: 1  |



|                 |  |
|-----------------|--|
| bButtonStop     | Type: Boolean (1/0)<br>Instructs VShield to give user option of denying access to the infected file if Prompt for Action is selected and a virus is detected<br>Default value: 1 |
| szMoveToFolder  | Type: String<br>Defines folder to which infected files should be moved<br>Default value: \Infected   |
| szCustomMessage | Type: String<br>Defines custom message to be displayed upon virus detection if action is set to Prompt for Action<br>Default value: Your custom message                          |

## ReportOptions

| Variable      | Description  |
|---------------|--|
| bLogToFile    | Type: Boolean (1/0)<br>Defines if scan results should be logged into log file<br>Default value: 0        |
| bLimitSize    | Type: Boolean (1/0)<br>Defines if size of the log file should be limited<br>Default value: 1             |
| uMaxKilobytes | Type: Integer (10-999)<br>Defines maximum size of the log file in kilobytes<br>Default value: 100        |
| bLogDetection | Type: Boolean (1/0)<br>Defines if scanning results should be logged<br>Default value: 1                  |
| bLogClean     | Type: Boolean (1/0)<br>Defines if cleaning results should be logged<br>Default value: 1                  |
| bLogDelete    | Type: Boolean (1/0)<br>Defines if infected file delete operations should be logged<br>Default value: 1   |
| bLogMove      | Type: Boolean (1/0)<br>Defines if infected file move operations should be logged<br>Default value: 1     |
| bLogSettings  | Type: Boolean (1/0)<br>Defines if session settings should be logged on shutdown<br>Default value: 1      |
| bLogSummary   | Type: Boolean (1/0)<br>Defines if session summary should be logged on shutdown<br>Default value: 1       |
| bLogDateTime  | Type: Boolean (1/0)<br>Defines if time and date of an event should be logged<br>Default value: 1         |
| bLogUserName  | Type: Boolean (1/0)<br>Defines if user name should be logged<br>Default value: 1                         |
| szLogFileName | Type: String<br>Defines log file name<br>Default value: C:\Program Files\McAfee\VShield Activity Log.txt |

## SecurityOptions

| Variable          | Description   |
|-------------------|---|
| szPasswordProtect | Type: Boolean (1/0)<br>Defines if password protection is enabled.<br>Default value: 0 |
| szPasswordCRC     |   |

## ExcludedItems

| Variable   | Description   |
|--|---|
| NumExcludedItems                                 | Type: Integer (0-n)<br>Defines the number of items excluded from on-access scanning<br>Default value: 1   |
| ExcludedItem_x,<br>where x is a zero-based index | Type: String<br>Instructs VShield to exclude the item from on-access scanning<br>Default value: \Recycled *.* 1 1 *<br>* The string is separated into fields using the pipe ( ) character:<br>Field 1 - Folder portion of item to exclude. Leave blank for a single file anywhere on the system.<br>Field 2 - File portion of the item to exclude. Leave blank if a folder is excluded without a filename.<br>Field 3 - Integer (1-3)<br>Possible values:<br>1 - Exclude from file-access scanning<br>2 - Exclude from boot-record scanning<br>3 - Exclude from both boot-record and file-access scanning<br>Field 4 - Boolean (1/0)<br>Possible values:<br>1 - Instructs VShield to exclude subfolders of the excluded item<br>2 - Instructs VShield to not exclude subfolders |

## Centralized Alerting ALR File Format

The ALR file is the Centralized Alerting text that contains virus event variables. Each variable in the file has a name followed by the equal (=) sign and a value. The following is a line-by-line description of the Centralized Alerting ALR file format:

|                   |  |
|-------------------|--|
| [CentralAlert]    | Centralized Alerting identifier  |
| uFileVersion      | Type: Integer<br>Centralized Alerting version number   |
| uStatus           |  |
| szVirusName       | Type: String<br>The name of the virus.   |
| szItemName        | Type: String<br>The infected file name and path.   |
| szUserName        | Type: String<br>The user name.   |
| szSoftware        | Type: String<br>The name of the McAfee virus application installed on the reporting machine. |
| szSoftwareVersion | Type: String<br>The version of the virus application.  |
| szComputerName    | Type: String<br>The name of the machine reporting the event.                                 |
| uYear             | Type: Integer (0000-9999)<br>The year of the event.  |
| uMonth            | Type: Integer (1-12)<br>The month of the event.  |
| uDay              | Type: Integer (1-31)<br>The day of the event.  |
| uHour             | Type: Integer (0-23)<br>The hour of the event .  |
| uMinute           | Type: Integer (0-59)<br>The minute of the event.   |
| uSecond           | Type: Integer (0-59)<br>The second of the event.   |

## Testing Your Installation

The Eicar Standard AntiVirus Test File is a world-wide combined effort by anti-virus vendors to set one standard for customers to verify their anti-virus installations. To test your installation, copy the following line into its own file and name it EICAR.COM.

```
X5O!P%@AP[4\PZX54(P^)7CC)7}$EICAR-STANDARD-ANTIVIRUS-TEST-FILE!$H+H*
```

Upon completion, you will have a 69- or 70-byte file.

When this file is scanned, VirusScan will report finding the EICAR-STANDARD-AV-TEST-FILE virus. THIS FILE IS NOT A VIRUS! Delete the file when installation testing is completed so unsuspecting users are not unnecessarily alarmed.

### Note

Because the Eicar Standard AntiVirus Test File is not a true virus infection, you will not be able to clean or repair the infected file.

Macros, below

## McAfee Virus Information Library

The McAfee Virus Information Library contains detailed virus information. This information includes the virus name, its characteristics, its method of infection, how to tell if you are infected, and how it can be removed.

There are several ways to access the McAfee Virus Information Library:

To automatically access the most current version of the Virus Information Library, [click here](#).

To manually access the most current version of the Virus Information Library, navigate to <http://www.mcafee.com/support/techdocs/vinfo/index.html>.

If you copied the help file version of the Virus Information Library to your VirusScan program files directory, [click here](#).

If you did not copy the help file version of the Virus Information Library to your VirusScan program files directory, open the File Manager, navigate to the VirusScan CD-ROM and double-click MCAFEE.HLP.

## **McAfee Virus Information Library (Help File)**

Please wait while the McAfee Virus Information Library loads.

### **Note**

If this takes more than 10-15 seconds, the Virus Information Library may not be installed on your system. To install the Virus Information Library, simply copy the file MCAFEE.HLP to your VirusScan directory (default C:\MCAFEE\VIRUSCAN).

To start the Virus Information Library manually, open the File Manager and double-click the MCAFEE.HLP help file.

## **McAfee Virus Information Library (McAfee Website)**

Please wait while we access the McAfee Virus Information Library.

### **Notes**

To access this version of the Virus Information Library, you must have an active connection to the Internet and you must have a copy of Netscape Navigator or Microsoft Internet Explorer. If you do not have one of these browsers, but have access to the World Wide Web, you can access the library at <http://www.mcafee.com/support/techdocs/vinfo/index.html>.



## **Emergency Disk Creation Utility**

Please wait while the Emergency Disk creation utility loads.

### **Note**

If this takes more than a few seconds, please start the Emergency Disk creation utility manually. To start the utility manually, open the VirusScan program group and double-click the Create Emergency Disk icon.

## **McAfee Website**

Please wait while we access the McAfee Website.

### **Notes**

To access the McAfee Website, you must have an active connection to the Internet and you must have a copy of Netscape Navigator or Microsoft Internet Explorer. If you do not have one of these browsers, but have access to the World Wide Web, you can access the website at <http://www.mcafee.com>.

## **VShield Properties**

Please wait while the VShield loads.

### **Note**

If this takes more than a few seconds, please start the VShield manually. To start the VShield manually, open the VirusScan program group and double-click the VShield icon.

## **VirusScan Console**

Please wait while the VirusScan Console loads.

### **Note**

If this takes more than a few seconds, please start the VirusScan Console manually. To start the VirusScan Console manually, open the VirusScan program group and double-click the VirusScan Console icon.

## **VirusScan's On-Demand Scanner**

Please wait while VirusScan loads.

### **Note**

If this takes more than a few seconds, please start VirusScan manually. To start VirusScan manually, open the VirusScan program group and double-click the VirusScan icon.

## **NCSA Website**

Please wait while we access the NCSA Website.

### **Note**

To access the NCSA Website, you must have an active connection to the Internet and you must have a copy of Netscape Navigator or Microsoft Internet Explorer. If you do not have one of these browsers, but have access to the World Wide Web, you can access the website at <http://www.ncsa.com>.

## **Adobe Website**

Please wait while we access the Adobe Website.

### **Note**

To access the Adobe Website, you must have an active connection to the Internet and you must have a copy of Netscape Navigator or Microsoft Internet Explorer. If you do not have one of these browsers, but have access to the World Wide Web, you can access the website at <http://www.adobe.com>.

## VShield Virus Activity Log

Please wait while the activity log loads.

### Note

If the activity log does not open, either the Log to File option is not active or you are not using the default log file name. To manually open the VShield activity log, simply open the file defined on the Report page with any text editor (e.g., Notepad, Word, etc.).



## On-demand Scanning Virus Activity Log

Please wait while the activity log loads.

### Note

If the activity log does not open, either the Log to File option is not active or you are not using the default log file name. To open the activity log, select View Activity Log from the File menu.

## **Virus List**

Please wait while the Virus List loads.

### **Note**

If this takes more than a few seconds, please open the Virus List manually. To open the Virus List manually, start the File Manager, navigate to the VirusScan directory, and double-click VIRLST16.EXE.

**end macros**

## **VirusScan User's Manual**

The VirusScan User's Manual is in the Adobe Acrobat format (PDF) and is available on the VirusScan CD-ROM. To open the VirusScan User's Manual, start Adobe Acrobat and open the WSCDOC31.PDF.

### **Note**

You must have the Adobe Acrobat Reader installed to view the manual. The Acrobat reader is available on the CD-ROM version of this product or can be downloaded from [www.adobe.com](http://www.adobe.com). To access the Adobe Website, [click here](#).

Context-sensitive, below

## Program Files

1. To add a file extension, click **Add**.
2. Enter a new file extension to scan and click **OK**.
3. Repeat Steps 1 and 2 until all desired file extensions are entered.
4. When you are finished editing the list of file extensions, click **OK**.

### Tips

To delete an extension, select it and click **Delete**.

To return to the default extensions, click **Default**.

## Adding a scan item

Select from the following:

- n To scan all drives attached to this computer, click the Select Item to Scan option button and select My Computer.
- n To scan all removable media, including floppy drives, click the Select Item to Scan option button and select All Removable Media.
- n To scan all hard drives attached to this computer, click the Select Item to Scan option button and select All Fixed Disks.
- n To scan all mounted network drives, click the Select Item to Scan option button and select All Network Drives.
- n To scan an individual drive or directory, click the Select Drive or Directory to Scan option button and enter a path to the item to scan or click **Browse** to locate one.

After selecting a scan item, click **OK**. To exit without adding a scan item, click **Cancel**.

## Adding an exclude item

1. Enter the full path to a file, drive, or directory or click **Browse** to locate one.
2. To exclude subdirectories from scanning, select the Include Subdirectories checkbox.
3. To exclude the item from file scanning, select the File Scanning checkbox.
4. To exclude the item from boot sector scanning, select the Boot Sector Scanning checkbox.
5. To add the exclude item, click **OK**. To exit without adding the exclude item, click **Cancel**.

### Notes

To edit a scan item, select the item and click **Edit**.

To remove a scan item, select the item and click **Remove**.



## To change the password

1. Enter a new password.
2. Reenter the password.

## Virus List

The Virus List helps you locate basic, but vital information about your virus. To find out about your virus, complete the following procedure:

1. Locate your virus by scrolling through the Virus List or clicking **Find Virus** and entering the virus name.
2. Highlight the virus and click **Virus Info**. The Virus Information page is displayed.
3. This information includes:

Virus Information, including:

[Virus Name](#)

[Infects](#)

[Virus Size](#)

Virus Characteristics, including:

[Memory Resident](#)

[Encrypted](#)

[Polymorphic](#)

[Repairable](#)

[Macro Virus](#)

## Virus Information

This dialog box contains the following information:

### Virus Information

[Virus Name](#)

[Infects](#)

[Virus Size](#)

### Virus Characteristics

[Memory Resident](#)

[Encrypted](#)

[Polymorphic](#)

[Repairable](#)

[Macro Virus](#)

## Item Information

This dialog box contains the following information:

Virus Name

### File Information

Type

Location

Size

### MS-DOS Name and Dates

MS-DOS Name

Created

Modified

Accessed

### File Attributes

Read-only

Hidden

Archive

System

