

# Vern for Win 95 and Win NT 4

Introduction

Vern Menu

Options Menu

Properties Dialog

Acknowledgments

Keyboard Interface

Mouse Navigation

Registering Vern

*Vern for Windows 95 and Windows NT 4  
Copyright © 1996 One Guy Coding*

*Windows 95 is © Microsoft Corporation*

# Vern for Win 95 and Win NT 4

## Introduction

Vern is the Virtual Environment Resource Navigator. With Vern running you can have many programs running each occupying its own Virtual Screen. This makes for a cleaner looking desktop and can actually speed up the *look and feel* of Windows; when a program is sitting in an area of Vern Space that is not currently active, the Operating System will not waste any time redrawing that application. For example, if you have a word processor running in one Vern screen and a spreadsheet running in the next, you can quickly switch between those two screens with the windows Alt-TAB task switching mechanism and, provided that the auto activate option is selected, Vern will change to the virtual screen where the window is located.



To change between **Virtual Screens**, simply click on any of the **Vern cells** and Vern will rearrange all of your windows in Vern Space. You can also drag the miniature icons displayed in Vern from one cell to another and Vern will duplicate the action with your program.

If you right-click on Vern a menu is displayed which allows you to switch between apps as well as set Options and Properties for Vern's behaviour and a flyout menu allowing you to specify the sensitivity used for mouse switching.

Moving Vern is accomplished by dragging its window to a new location (click on an area of vern not occupied by a running program). Vern cells can be resized in the Properties dialog box. You can expand or contract Vern (thereby increasing or decreasing the number of Vern cells) by resizing the Vern window as you would any other Windows application. If you have enable the Freeze Cells option then when resizing Vern the number of horizontal and vertical cells remains the same but the existing cells are resized. If the Proportional option has also been selected resizing is done so that the cells retain the same proportion as the screen.

## Hotkeys

Vern can be configured to be raised with the *Ctrl-Alt-Cursor* keys. Hit *Ctrl-Alt-Up* to automatically raise Vern and move to the cell above your current cell. Likewise for *Ctrl-Alt-Left*, *Ctrl-Alt-Right* and *Ctrl-Alt-Down*. You can turn this option on and off in the Hotkeys Tab of the **Properties** dialog box. Vern can be raised above any other running programs by hitting a **hotkey**. By default this is **F12** but can be changed in the Hotkeys Tab of the Properties dialog box.

## Auto Activate

If the **Auto Activate** option has been selected Vern will automatically switch to the cell containing a window that has been selected from the Task bar or the Alt-Tab task list. Turn Auto Activate on and off in the Options menu or in the Options Tab of the Properties dialog box.

## Mouse Switching

You can switch between active Vern cells by rubbing the edge of the screen with your mouse. The Mouse Switch Sensitivity is controlled in the Vern menu and can be set to any of five levels from **Barely** Sensitive to **Super** Sensitive. If you rub the top edge of the display you will move up one vern cell, similarly for the other edges of the screen.

*Vern for Windows 95 and Windows NT 4*  
*Copyright © 1996 One Guy Coding*

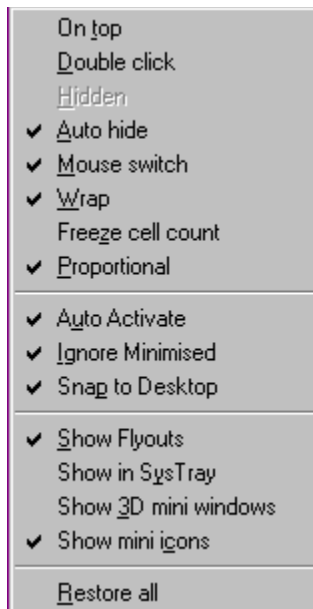
Windows 95 is © *Microsoft Corporation*

## Vern Menu



The Main Vern menu is activated by right clicking on Vern or on the tiny Vern icon in the System Tray. Click on a menu item for more details.

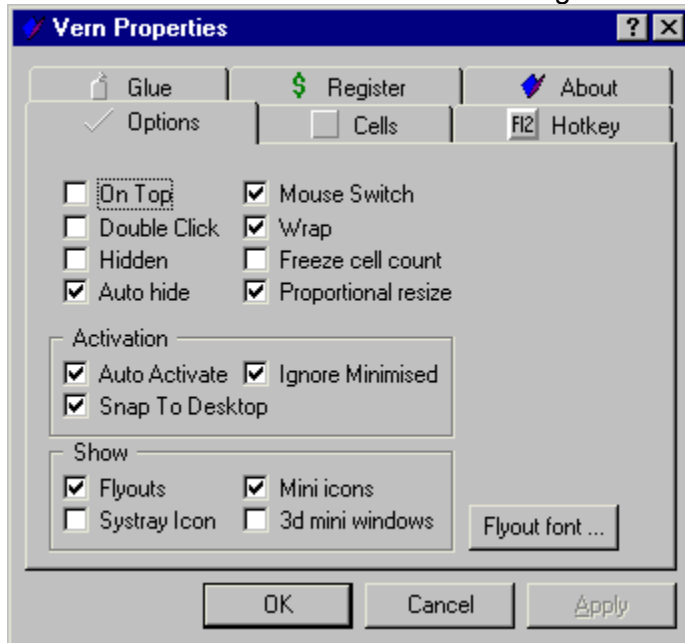
## Options Menu



Click on any of the options for details.

## Properties Dialog

Click on the tabs for information concerning their functions.



## Acknowledgments

Thanks to the many users and beta-testers who have helped in the creation of vern.

## Virtual Screen

A virtual screen is just like your regular desktop except that the programs you are running can be redistributed over a number of separate desktops. Each desktop is identical and will display the same desktop icons, the same task bar and the same Start Menu. When you change virtual screens your programs will automatically move to that desktop and restore any programs that happen to be running on that screen.



## Vernspace

Vernspace is the area that vern uses for positioning all running programs. Vern handles all aspects of program switching so you really don't have to concern yourself with how programs are arranged in vernspace. But, if you're curious how vern manipulates things ... for example, if your display has a resolution of 1024x768, and you have Vern setup in a single column 5 rows high, the extent of vernspace is from (0,0) to (1023,3839.)

Options Tab

**Glue Tab:** You can **glue** a program window to the desktop so that it is not moved when you switch vern screens. This tab lists all movable windows and allows you to glue and unglue them to the desktop. The listbox actually shows all window **classes** but the title of the window is displayed when you click on any of the classes.

**Hotkey Tab:** This tab allows you to set any one of several Hotkeys that are available to Vern users. You can also select the option to cycle through vern windows with the Ctrl-Alt-Cursor keys. For example, Ctrl-Alt-Up will move you up one vern screen.

**Cells Tab:** Set the vern cell size in this dialog.

**Switch To:** Open the Switch To popup menu

**Restore All:** Restore all windows to the current vern cell. If a program becomes **Lost in Vern Space** you can use this option to restore the window.

Next



Previous

Closes Vern and restores all running programs the the current display area.

Click left to change to this virtual Screen. To open the main Vern menu click right anywhere on Vern.

Click left on this miniature representation of Windows Paint to switch to its virtual screen.

This flyout window identifies the miniature window under the cursor as Calculator. Flyouts can be toggled on and off in the Options menu or the Properties dialog box.

An explorer file list window is running here.

A list of Windows that Vern is responsible for moving through Vernspace

These are the dimensions of each of the Vern cells in pixels. If you have turned on the freeze cells option these settings will be changed each time you resize the Vern window.



**On Top:** Selecting this option leaves Vern on top of **all** other windows. The default is off.

**Double Click:** If the Double Click option is selected you must double click in order to change Vern cells. The default is off.

**Show Flyouts:** To display the small informational flyout windows turn this option on. The default is on.

**Auto Activate:** When a window is brought into the **Foreground** Vern will switch to that window automatically if this option is selected. For example, if you select a program from the Alt-TAB task list it will be brought into the foreground and Vern will switch to the cell where this window lives. If the window is minimised Vern checks whether the **Ignore Minimised** option is set before restoring the window. The default is on.

**Freeze Cells:** If this option is selected then cells are stretched or compressed when Vern is resized. If the Proportional option is on the cells will be scaled to screen dimensions. If the Freeze Cells option is off cells will be added or removed when Vern is resized. The default is off.

**Proportional:** Select this option when using the Freeze Cells option to retain the screen dimensions when resizing Vern.

**Ignore Minimised:** If this option is selected Vern will skip minimised windows when Auto Activating. The default is off.

**Snap to Desktop:** When this option is selected Vern ensures that a window is placed entirely within a virtual screen when the miniature representation of that program is dragged through Vern Space.



Click this button to restore the selected window, from the movable windows list, to the current Vern cell.

**Hotkey:** To change your hotkey settings click [here](#).

**Glue:** Program windows can be *glued* so that they are always stuck in place no matter which Vern cell is active. Click this button to indicate which **Window Classes** are to be glued in place. For example, you might want to use this function to glue a clock to the desktop so that it won't move when you switch vern cells.

**Help:** Open Vern help. This file.

**About:** Open the Vern about dialog box

**Exit Vern:** Move all windows back to the visible screen and exit Vern.

**Ok:** Accept all changes and close the dialog box

**Cancel:** Ignore changes and close the dialog box (this does not apply to windows that have been restored or switched to).



The gluelist is the list of window classes that are available for glueing. Each window class in the list can be glued or unglued by clicking the glued button above the list box.

If this button is checked then all windows of this class will be glued to the desktop.

Select the function key you want to use as a hot key. There are a number of hotkeys that can be set or unset which are listed in the dropdown listbox below.

Three modifiers, Ctrl, Shift and Alt are available. Any combination of these three modifiers can be used in addition to the hotkey specified above.

What the heck

Click this button to have vern respond to the Alt-Cursor hotkeys. For example, if this option is turned on and you hit Alt-Up Vern is raised and the vern cell immediately above the current cell is selected. Similarly for Alt-Left, Alt-Down and Alt-Right.

**Mouse Switch:** If this option is selected you can navigate through vern space by rubbing the edge of the screen in the direction you would like to travel. The sensitivity for this is controlled in the **Switch Sensitivity** flyout menu.

**Wrap:** Wraps around to the first or last cell when navigating through Vern space with the keyboard or mouse.



**Hidden:** Select this option to hide vern between uses. Vern can be shown with a hotkey or by clicking on the Vern icon in the System Tray. Note that this option will be grayed if Vern is not currently displayed in the system tray.

**Auto Hide:** If this option is selected and Vern is dragged to one of the four edges of the screen Vern will automatically hide along the edge of the display when it loses focus. To redisplay vern move your mouse over the area where vern is hiding. Note that there is a slight delay to prevent vern from being accidentally reactivated.

**Show Systray Icon:** If this option is selected Vern will place an icon in the system tray. Right click on the system tray icon to open the vern menu or left click on the icon to activate vern.

**Show 3d mini Windows:** To display the mini windows on Vern with a 3d border turn this option on.

**Show mini icons:** To display icons on the mini windows turn this option on. If this option is not selected the window title is displayed as text on the mini window.

**Add to Startup Folder:** To have Vern start automatically when you start Windows select this menu entry. Vern will create a shortcut in the startup menu that points to the executable.

**Flyout Font:** Click on this button to change the font that Vern uses for the flyout windows. This font is also used when mini icons are not being displayed.

**Priorities:** This flyout menu allows you to change the Operating System Priorities for any of the processes that Vern is responsible for. If a program is rarely used you may wish to set its priority to Idle to enhance your system performance. Likewise, if you are copying a huge directory tree you might want to give the Explorer window an **Idle** priority so that you can continue working in another application. It was reported by one user that by selecting a high priority for Mathematica that his jobs ran five times faster!



**Switch Sensitivity:** This option controls the Mouse Switch sensitivity. There are five levels of sensitivity available, from **Barely** sensitive to **Kind of** sensitive to **Normal** Sensitivity then **Really** sensitive and finally **Super** Sensitive. With the Barely Sensitive level selected it takes a concerted effort to make mouse switching work. You'll have to move the cursor around the border (within 5 pixels of any edge of the screen) without drifting from this region. With Normal Sensitivity, simply dragging the mouse cursor along the edge of the screen is enough to change screens. With Super Sensitive just a slight flick of the cursor near the edge of the screen will do the switch in that direction.

One of the fastest methods for switching between applications is the Window System hotkey Alt-TAB. If you weren't aware of it go ahead, try it!

Your registration code is supplied when you register with One Guy Coding. Enter the supplied code exactly as given with no spaces before or after.

Your registration name is supplied when you register with One Guy Coding. Enter the supplied name exactly as given with no spaces before or after.

One Guy Coding is ...

**Author:** Steeve McCauley  
**email:** [oneguy@cam.org](mailto:oneguy@cam.org)  
**Web:** <http://www.cam.org/~oneguy>

Very occasionally program windows become lost in vern space. This is annoying and I've tried to ensure that programs do not become lost. If this happens with a particular application please let me know. To restore a window that is lost you have several options.

- Activate the window with the Alt-TAB list or the Task Bar. Hit Alt-Space to open the window's system menu. Select Move and hit the space bar. You should then be able to drag the window back on screen with the mouse.
- Use the Restore All option in the Options menu.

# Keyboard Interface

## When Vern is active:

- Cursor é** Move upward one cell. If wrap is on you will move to the bottom most cell if moving up from the top most position.
- Cursor ê** Move downward one cell
- Cursor ç** Move left one cell
- Cursor è** Move right one cell
- Home** Move to the first cell in the current row
- End** Move to the last cell in the current row
- Page Up** Move to the first cell in the current column
- Page Dn** Move to the last cell in the current column
- 1 through 9** Move to the nth cell. If there are more horizontal cells than vertical this option will move horizontally, otherwise it moves vertically.
- Ctrl-1 through Ctrl-9** Holding down the control key reverses the direction as described above.

## When Vern is inactive:

- Ctrl-Alt-é** Provided that the Alt-Cursor hotkeys are being used move up to the next higher vern cell and activate vern
- Ctrl-Alt-ê** Raise vern and move down one cell
- Ctrl-Alt-ç** Raise vern and move left one cell
- Ctrl-Alt-è** Rasie vern and move right one cell

## Mouse Interface

### When Vern is active:

- Left click** Change to the cell where the click is registered
- Right click** Open the Vern Menu

### When Vern is inactive:

- Right click** on an MDI child window caption bar, or any minimise, restore or maximise button to raise vern
- Mouse Switch** Provided that mouse switching has been activated move the cursor near the edge of the screen in the direction you would like to travel in vern to change vern cells



## All in One Guy Coding Registration Code

All shareware by One Guy Coding is covered by the **All In One Guy Coding Registration Code**, which is a fancy way of saying that if you register for one program you are automatically registered for all other One Guy Coding Shareware.

### Credit Card Registration

Registration by credit card costs 20\$ US currency. [Credit Card Registration](#) information is also available at my website <http://www.cam.org/~oneguy>. See the *registration* section for details.

### Cheque, Cash or Money Order

If you want to pay by cheque, cash or money order the cost is 20\$ US (Canadian funds for Canadian customers.) Send your cheque or money order, payable to S McCauley, to,

Steeve McCauley  
4112 Hotel de Ville  
Montreal, Quebec  
Canada  
H2W 2H1

Be sure to include your return snailmail address or email address so I can send you a registration code. EMail, of course, is preferred.

### Registration Form for Cheque or Money Order Registrations

Full Name	_____		
Address	_____		
	_____		
	_____		
City	_____	State / Province	_____
Country	_____	Zip/Postal Code	_____
eMail	_____		
#Copies @ 20\$ per	_____		
Total	_____		

**Please Register today!**

**Snail Mail:** Standard Internet putdown of Regular Postal Mail.

## Credit Card Registration

I am using the [Kagi Shareware Registration](#) service to process my Credit Card orders. You can submit your Credit Card Registration for One Guy Coding shareware to them via [eMail](#), [FAX](#) or [regular postal mail](#).

To register by Credit Card you use the **register.exe** program that came with Vern (or any other One Guy Coding shareware application). Since all One Guy Coding applications are covered by one registration code (the so-called **All in One Guy Coding Registration Code**) any of my versions of register.exe will do. If you don't have the register.exe program you can download it from my site at <http://www.cam.org/~oneguy/Registration>. I can also attach the register.exe program and eMail it to you if you're having trouble downloading it from that site.

The register.exe program prompts you for the necessary information for submitting your registration to kagi,

- Registration Name
- eMail address
- Postal Address
- Credit Card (Visa, MasterCard or AmEx) info

This information is then encoded in a format suitable for sending securely via [eMail](#), [Fax](#) or postal [mail](#). The output can be copied to the clipboard (or saved to an ASCII file) and pasted into an email message addressed to [sales@kagi.com](mailto:sales@kagi.com) or it can be printed, faxed or postal mailed.

The Register program was written by Greg Kochaniak (<http://www.nb.net/~gregko/winregis.htm>).

**Kagi eMail**

sales@kagi.com

**Kagi Fax**

+1 510 652 6589

**Kagi Postal Mail**

Kagi  
1442-A Walnut Street #392-LV  
Berkeley, California, 94709-1405  
USA

**Kagi Shareware Registration Service**

<http://www.kagi.com/>





