

# MIDTray

The best MID player for Windows95, it comes with great features like,

**Playlist**                      *Save you favorite files and play them over, over and over and over!!*

**A proper Pause**            *MIDTray will remember where you are in a file and jump to that position next time you run it.*

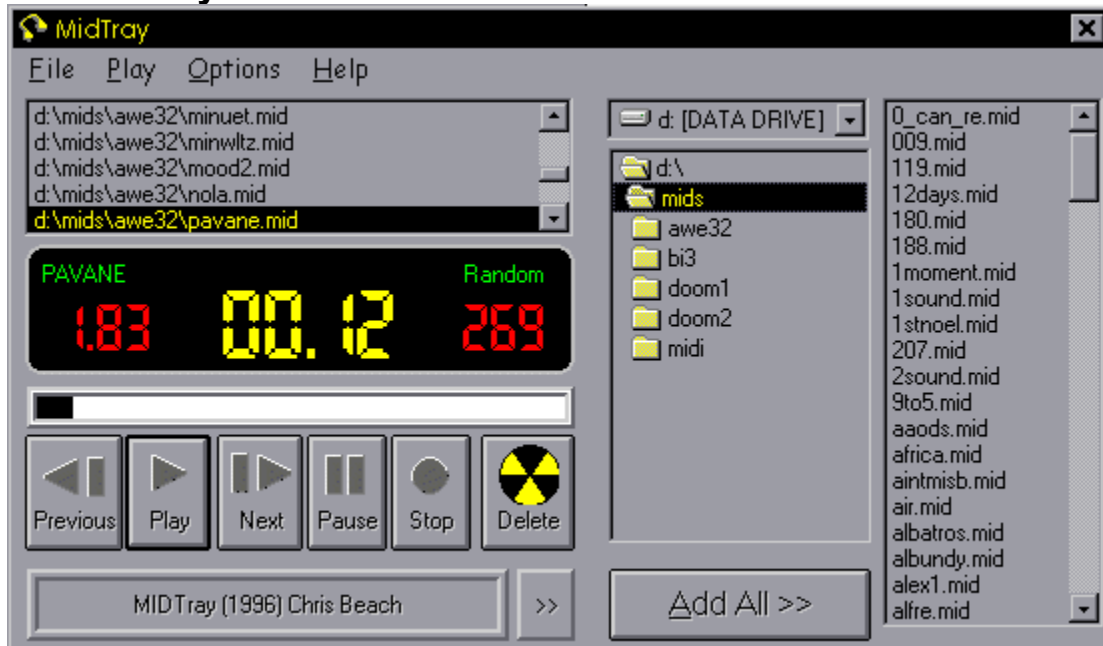
**Multi Colours**              *You might or might not like them :-)*

**A Spining Button**         *Just so you can go crazy for free.*

And best of all

**A Tray Icon**                 *Control MIDTray using just one small icon.*

## The MIDTray main screen



## Contents:

### Menus

[File](#)

[Play](#)

[Options](#)

[Help](#)

### [Playback Commands](#)

### [Adding Files](#)

### [The Digital Display](#)

### [Information](#)

You might be thinking 'What the hell is he on about, I can't see anything.' This is

probably because you haven't right clicked on the yellow icon on the Windows 95 Startbar. It's probably closest to the right.

The little icon that you've missed is the best part of **MIDTray** and the reason for the name. You might not call it this, but that indentation with the clock in it, is often called the tray. And because this programs plays MID files from the Tray it's called **MIDTray**.

You can do four completely different things to that icon:

- |                              |  |
|------------------------------|--|
| 1) <b>Left Click</b>         | <i>This will bring up a menu with the common options on.</i> |
| 2) <b>Right Click</b>        | <i>This will bring up the main screen</i>                    |
| 3) <b>Left Double Click</b>  | <i>This will do the same as the prev button/menu</i>         |
| 4) <b>Right Double Click</b> | <i>This will do the same as the next button/menu</i>         |

Once you've set **MIDTray** up, that icon will be the only thing you'll need. If you use **MIDTray** a lot then I suggest you put it in the startup group, and buy it.

I hope you have fun with **MIDTray**

Chris Beach

MIDTray. 1996 Chris Beach



# File Menu

The file menu allows you to load and save your playlists

**Load List**

*This will load the MIDTRAY.LIST file*

**Save List**

*This will save the contents of the playlist to MIDTRAY.LIST*

**Quit MIDTray**

*This will ask if you want to save your settings and*

*then quit **MIDTray***

MIDTray. 1996 [Chris Beach](#)



# Play Menu

This menu controls the playing of MID files. See also Playback Commands

**Play** *This will play the currently selected song, or restart the song presently playing*

**Pause** *This will pause playback. Use play to restart*

**Stop** *This will stop playback. Play will restart from the beginning*

**Next** *This will begin playing the next song in the playlis, unless random is selected*

**Prev** *This will begin playing the previous song played, unless random is selected*

**Random** *This will decide how the songs will be played back  
If it is on then next and prev commands will play a song at random.  
When random is on, there will be check by this option and the  
random in the  
display will be light green*

**NOTE:** *If random is on then next and prev will both act the same  
Also random is actually random, SO, well if you look at some programs and  
almost all old 8bit machines  
the random is calculated on the time since they switched on.*



# Options Menu

This menu controls all of the extra options you can use to enhance **MIDTray**.

## **Volume Control**

*the path to your*

*sndvol32 program*

*load the Mixer*

*depending on your*

*bass levels.*

*When **MIDTray** is run for the first time this will ask you for*

*Mixer control, it will automaticly select the Windows 95*

*which is the little speaker icon on the start bar.*

*Once **MIDTray** has the Mixer information pressing this will*

*program which enable you to change the volume, and*

*soundcard, it will also let you change balance, treble and*

## **Show LED Segments**

*display will be show*

*This option will control if the unlit segments of the digital*

## **Colours...**

*look of **MIDTray***

*All the options under this menu will change the*

**Display Box Text...**  
*digital display*

*These options will change foreground colour of the*

*They will all bring up a selection box of colours*

**Length Of MID**

*This is the left-handnumber*

**Position In MID**

*This the centre number*

**Files In Playlist**

*This is the right-hand number*

## **Background...**

*apart from the*

*These options will change the colours of eveything,*

*buttons, to either*

**Green**

on **Green**

**Blue**

on **Blue**

If you are wondering why the colour options are limited and why they make the program look **\*DISGUSTING\*** then

blame my sister. She hates the amount of grey in Windows programs and thinks they should all be more colourful, if you

think she's right then please mail me, and I'll add a better slection of options in the next release.

**Defaults**  
*defaults*

*This will change the colours back to their original installation*

Thank God :-)

**Save Settings**  
*save.*

*This will save every setting that I thought might be usefull to*

*This includes:*



*song, this means that  
to listen to a song*

*Random  
ALL Colours  
Show Segments  
and most importantly it will save the current Position in the  
you'll be able to quit **MIDTray** and reload it with out having  
again.* Thanks to the authors of MOD4WIN for that idea.

MIDTray. 1996 Chris Beach



# Help Menu

I think this menu's fairly obvious

**Help...**      *As you have found out, this will load the **MIDTray** help file*

**About...**      *This will display the about box, which will display general information about **MIDTray**  
It will also allow you to enter your registration details.*

MIDTray. 1996 Chris Beach



# About

This is the customary about box. It will tell you all the information about **MIDTray**. It will also allow you to enter your registration details, which will give you full access to **MIDTray**.

**O.K.**

*This will exit the about box*

**Register NOW!**

*This will call up two boxes, one for your registration*

*name and one for your code.*

*If the code is correct then Thank You for registering*

**MIDTray**.

MIDTray. 1996 Chris Beach



# Playback Commands

These are the six buttons under the digital display.

They all do the same as their play menu equivalents, apart from the delete button which can't do the same because it is NOT on the play menu.

The delete button has two functions, first it will remove files from the playlist, second it will delete MID files.

When using the delete button to delete MID files, please be careful, it doesn't just move the files to the Windows 95 recycle bin, it completely removes, destroys, kills, annihilates, vaporises and obliterates them.

The only way you might be able to get them back is using MSDOS 5/6 undelete command, but it doesn't like Windows 95.

If you still want to delete, then double-clicking will remove the selected file from the playlist, or you can drag and drop the files from the playlist to the button.





# Adding Files

To use **MIDTray** you have to give it some files to play. You do this by adding files to the playlist.

You may be wondering how you select the files, well if you look at the bottom right of the **MIDTray** screen you will see a button with >> on it. Pressing this will expand the screen to show the file selection options.

You should recognize these from any other Windows program, there are 3 main parts:

**Drive List** *This is a list of all the drives on your computer. You can play MIDs from any, or all, drives but make sure that they are not removable drives. **MIDTray** will NOT sprout arms, find the disk/CD and insert it into your computer. It might do someday but not this day.*

**Directory List** *This lists all directories on the drive selected.*

**File List** *This is where all of your MID files should be listed, if you can't find any MIDs, then next time you spend money downloading a program, I suggest you read the description about it first.*

There are a number of ways to get your files from the File list to the play list:

- 1) **Add All**, this will add all the MID files in the file list to the play list.
- 2) **Double Click**, this will add single files to the list, usefull if you have a lot of naff files on your system.
- 3) **Drag 'n' Drop**, this will enable you to add any number of files to the playlist. Use CTRL-CLICK to select individual files, or SHIFT-CLICK to add a continuous group. Then press and hold the right mouse button and drag the files to the play list.

Once you've finished then just press the << button and then your ready to PLAY!!





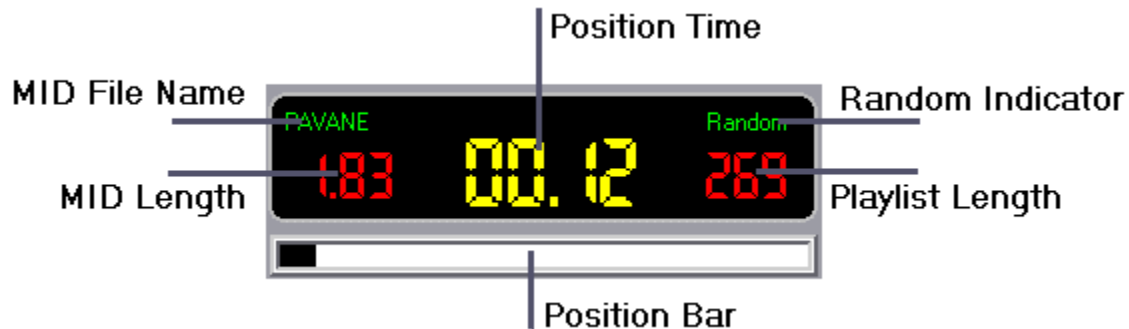
## Playlist

This is the list of all the files **MIDTray** will play.



# Digital Display

This is the information part of **MIDTray**, it has 6 sections:



- 1) **MID File Name,** *this is the name of the file that is currently playing*
- 2) **MID Length,** *this is the length in minutes of the file*
- 3) **Position Bar,** *this is the percentage of the song that has played*
- 4) **Playlist Length,** *this is the number of files in the playlist*
- 5) **Random Indicator,** *if it's light green, playback is random. If it is dark green, playback is not!*
- 6) **Position Time,** *this is the amount of time that has elapsed.*

There is another indicator of position, and that is the delete button. It will spin faster and faster as the song reaches its climax. Isn't that great??



# Information

---

**MIDTray** is shareware, that means that you can try it for 30 days and if you like it then you can pay me some money for it.

Once you have registered you will be able to load the playlist you've saved, and also you'll be able to change those disgusting colours my sister picked, if you want to. You'll also be entitled to free upgrades when there are any upgrades to have.

There are number of ways you can register **MIDTray**:

1)CompuServe SWREG service. Search for user ID 100436,172 and select **MIDTray**.

This is the best method because it's quick and there is no P&P

2)Post

Send the money to:

Chris Beach  
MIDTray Registration  
Long Meadow  
Paxford  
Chipping Campden  
Gloucestershire  
GL55 6XD  
ENGLAND

The cost of **MIDTray** will be \$30 or £15. If you do use the post option the please add at least £5 more for P&P, but if you live in some other universe then add more. You will recive any extra back with your disk.

---

## Contacting the author

There are five ways you could contact me

1)CompuServe ID 100436,172 (comma between numbers)

2)Internet EMail 100436.172@compuserve.com (period between numbers)

3)FAX 01386 593592

4)Phone 01386 593592

5)Snail Mail Use the address above without the **MIDTray** line.

---

## What's New



v0.0.0 Original design, nothing works apart from the about box!!  
v0.5.0 Most things work, but very little features  
v1.0.0 Could be released but no digital font and therefore looks naff  
v1.0.1 This version

---

### **Suggestions**

If you have any ideas or bug reports, please mail me and I'll do my best to add or fix them

---

### **VB Programmers**

If you have vb3 pro or vb4 pro and would like to convert MIDTray to 16bit then please write and we can arrange something. I am willing to distribute the code but not in its complete form, this is just for programmers that want to do a similar thing but can't think how to do it.

I have also written some common modules/code that can be used in any project.

**About Box:** This about box uses the app object and form1 to display its information, it also allows

shareware programs to be registered when used with...

**RegModule:** This small module uses two routines, one for the user to enter his details and one to

get the details back. It's not perfect because it uses the Win95 registry but it works.

**PKUNZIP:** This is an example of using PKUNZIP through Windows to unzip files, it was written has

a test for another one of my programs

---

### **Now the legal crap**

All of **MIDTray** is my work, this helpfile is my work, don't decompile, reverse-engineer or whatever to any part of **MIDTray**.

Windows, Windows '95, MSDOS, Visual Basic are Microsoft copyrights.

CompuServe is a something of CompuServe Information Service.

PKUNZIP is a copyright of PKZIP (I think)

If you think something is yours then please let me know and I'll remove it or credit you.



# Glossary



:-)

## **C**

Chris Beach

CIS

CompuServe

## **G**

God

## **I**

Icon

## **L**

LCD

LED

## **M**

Microsoft

MID

Mixer

MSDOS

## **N**

Number

## **P**

PC

PKUNZIP

Playlist

## **S**

Soundcard

StartBar

## **T**

Tray

## **V**

VB

**W**  
Win

**:-)**

Emoticon, adds emphasis to phrases

**Chris Beach**

100436.172@compuserve.com

**CIS**

CompuServe Information Service

**CompuServe**

CompuServe Information Service



## **God**

A being who might of created the universe and everything in it. How? we don't know, but we'll skip that shall we?

## Icon

Small Picture

## **LCD**

Liquid Crystal Display, common in calculators, stereos, and programs that are supposed to look 'realistic'.  
Like this one!!

**LED**

Light Emitting Diode.

## **Microsoft**

If you don't know who this is then you are not reading this :-)

## **MID**

MIDI, or Musical Instrument Digital Interface. What this means is synthesized music. Soundcards can make MIDI music using FM which is entirely computer generated and normally sounds like it, or the later cards use wavetable, which means that the instruments are stored as recordings (in wav files). One of the best wavetable cards is the SoundBlaster AWE 32.

**Mixer**

A name for a program that controls the volume, balance, treble and bass settings for a soundcard

# **MSDOS**

Microsoft Disk Operating System



**Number**

# in the US, No in the UK, Number for people with a disliking for abbreviations

**PC**  
Personal Computer

**PKUNZIP**

A MSDOS utility that will extract files from the popular archive format, ZIP.

## **Playlist**

The list of files played by MIDTray

## **Soundcard**

A CARD that fits into a PC and plays SOUND

## **StartBar**

The bar that is usually at the bottom of Win95, supposed to replace Program Manager. BTW did you know that Explorer is know the actual equivalent of Progman? Try killing explorer from the alt-ctrl-del menu...

## **Tray**

The indentation on the Windows 95 start bar

**VB**

Visual Basic, a easy to use programming language.



## **Win**

Microsoft's, nice friendly operating system.

If you don't know anything about computers then windows are clear glass panels in houses, you use them to see outside.

Why Microsoft called Windows, Windows is anyone guess, its not made of glass (crashes as easily as glass though :) and you can't see through it. If someone knows the reasoning behind the name let me know.

Win is Windows for people who can't spell or can't be bothered to write 4 extra letters.



