

-ÚŽŸ

.,ı,ı,ı,ı,ı

<@“\,Æ“Á’¥

•K—v,ÈfVfXfef€□□□□

fCf“fXfgf€□□[fVf†f“

Backup Basics ,İŠJŽn

f□fjif...□□[fo□□[

‘l’öfo□□[

%oæ-É%o°•”,ı•\Ž!□□€-Ú

fGf%o□□[f□fbfZ□□[fw

,Í,Ń,ß,É

Backup Basics for Windows

,Í Af [fnfxfe [fvf#j“ ,đ'í Ű,Æ,.,éfnfCfpftfH [f}f“fX,ÈŽŸ ç'ă,ìff [f^•Ű'Ń—pſ
ftfgfEjFfA,Å,·B Backup Basics ,Í Microsoft Windows ,ì%° ,Å“ ®ì,·,é,æ,x
,É ŸŸEv,³,è AfVf“fOf< ft [fU [—p,ìff [f^fofbfNfAfbfv ,ÆŠfXfgfA^—
[,ì,½,ß,ìVf“fvf<,È'€ ìŠÁ<<,^añ<Ÿ,³,è,Ű,·B Windows ,ìOf%oftfBfjf<
ft [fU [fCf“f^ftfF [fX (GUI),đŽg—p,·,é,±
,Æ,É,æ,è Af}fEfX,đfnfŠfbfN,·,é,³/₄, ,Åf [f]f< fhf%ofCfu,ìff [f^,đŠÇ—[,·,é,±
,Æ,^a,Å,«,Ű,·B

<@”\,Æ“Á’¥

Windows

fx[]fX,ì‘€[]ì«

fvf<f_fEf“ f[]fj...
[][]AfAfCfRf“[]AfAfCfRf“‘l’đfo[][,đŽg—

p,μ,½‘€[]ì[]BfOf

%oftfBfj<,ÈfffBfCefNfgfŠ[][fcfŠ[][,ì·\

Ž|,É,æ,Á,Äfhf

%ofCfu,âffBfCefNfgfŠ[][,đŠÈ‘P,É^Ú“®,Á,«[]

AfjftgfEjFfA‘€[]ì,½,β,ìftf@fCf<‘l’đ,đ’¼Š

‘‘l,É[]s,α,±,Æ,ª,Á,«,Ü,·[]B

flf“f%ofCf“ fwf<fv

[]ó<μ,É%ož,¶,½fwf<fv,ª’ñ<ÿ,³,ê,Ü,·[]B

fjbfNfOf

fjbfNfOf

%ofEf“fh“®[]ì

%ofEf“fh,Á“®[]ì,Á,«,é,½,β[]Aft[]fU[][,í“žž,É

‘¼,ìfAvfŠfP[]fVf#f“ fv[]fOf%of€,đŽg—

p,·,é,±,Æ,ª,Á,«,Ü,·[]B

[]^—[]Ceo%oβ,ÆŠT—

,·,x,Ä,ìfe[]fV[]^—[],É,“,“,é[]A[]^—[]

v,ì“[]Cv[]î·ñ

%oβ’ö,ì“[]Cv[]î·ñ,đ’ñ<ÿ,μ,Ü,·[]B

f[]fo ftf@fCf<

fjbfNfAfbfv,³,ê,½ftf@fCf<,âfe[]fV[]^—

[]‘t,É“[]¶,μ,½fGf%o[][]A—v—

ñ[]î·ñ,É,Ç,ªSi”[,³,ê,Ü,·[]B

3 Ží—

3 Ží—p,ìfjbfNfAfbfv·û-@

p,ìfjbfNfAfbfv·û-@

(fm[]f[]f<[]A[]·ª[]AfCf“fNfŠf[]f“f^f<)

,ª, ,è[]A,·,x,Ä,ìftf@fCf<,đfjbfNfAfbfv,·,é,±

,Æ,à,Á,«,Ü,·,μ[]A[]V,½,É[]ì[]—,³,ê,½ftf@fCf<,â

·ì[]X,³,ê,½ftf@fCf<,ì,ÿ,đfjbfNfAfbfv,·,é,±

,Æ,à,Á,«,Ü,·[]B,±,é,ç,đŽg—

p,μ,Ä[]Aff[]f^,đCø—|,æ,[]A^À’S,ÉŠÇ—

[],·,é,±,Æ,ª,Á,«,Ü,·[]B

fjnfC

fe[]fV fffBfCefNfgfŠ[][]î·ñ,đfn[]fH

fjpfH[]f}f“fX,ÈfffBf

fffBfXfN,ÉSi”[,·,é,±

XfNfx[]fX,ìfj^f[]fo

,Æ,É,æ,è[]Afe[]fV,đ‘€[]ì,·,é,±,Æ,È,[]A‘f[],-

ŠÈ‘P,ÉfAfNfZfX,·,é,±,Æ,ª,Á,«,Ü,·[]B

[],‘-ftf@fCf<

¼ fCf“f`[]A8mm[]A4mm (DAT) fe[]fV fhf

fAfNfZfX (FFA)

%ofCfu,ì[]^—[],É,“,ç,Ä,í[]A“ÆŽ©<@”\,ì’·Š,ª—

Lø,É“,«,Ü,·[]B FFA

,É,æ,Á,Äfe[]fV,ìftf@fCf<,đ‘f[],-

Cÿ[]o,Á,«[]A,»,ìC<%oÉ[]AfŠfXfgfA,âxfŠftf@f

C[]^—[],É·K—v,ÉžžŠÖ,đ’Z[]k,Á,«,Ü,·[]B

•K—v,ÉfVfXfef€[]\[]—

Žÿ,ì[]€—Ú,đfNfŠfbfN,·,é,Æ[]ABackup Basics ,đ“®[]ì,³,¹,é,½,β,É·K—

v, È Å Ñ Ç È À, Ì \ □ ¬, ð • \ Ž !, µ, Û, · □ B

Š Ö ~ A € - Ú

• K - v, È f \ f t f g f E f F f A \ \ □ ¬

• K - v, È f n □ [f h f E f F f A \ \ □ ¬

• **K—v, È\ftfgfEjFfA** □ □ ~

MS-DOS , Ü, ½, Í PC-DOS □ Afo □ [fWf#f“ 3.1 ^ È □ ~

Microsoft Windows □ Afo □ [fWf#f“ 3.0 ^ È □ ~

• **K—v, Èfn [fhfEjFfA \ \ -**

80386 , , é, ç, í 80486 fvf [fZfbfT, ð“ < [Ú, µ [AfXf^f“f_ [fh f, [fh, Ü, ½, ÍfGf“fnf“fXfg
f, [fh, Å“ ® [i, , éISA [AEISA [AMicro Channel Architecture , IfVfXfef€

2 MB ^È [ã, ì RAM - fRf“fxf“fVf#fif< f [f, fŠ [640 KB [AXMS f [f, fŠ [1024 KB

2 MB ^È [ã, ì ó, «— ì ^æ, a, , éfn [fh fffBfXfN (fo [fWf#f“ 3.x
, afCf“fXfg [f< [i, Ý, ì, à, ì)

%øð'æ“x 640 x 350 , ì EGA fff%ø [[A, , é, ç, í %øð'æ“x 600 x 400 , ì VGA fff
%ø [[Ü, ½, ÍfOfœ [[fXfP [f<

Microsoft Windows fo [fWf#f“ 3.x , ÅfTf [[fg, ³, ê, Ä, ç, éfvfŠf“f^ (fifvfVf#f“ - f [fO
ftf@fCf<, ðfvfŠf“fg, , é, Æ, «, ¾, - •K—v)

f}fEfX, È, Ç, ìf [fCf“fefBf“fO fffofCfX, a, , é, Æ'€ [i, aŠy, Å, , a [A•K [{, Å, Í, , è, Ü, ¹, ñ [B

fCf“fXfgfÆ□[fvf†f“

fe□[fv fhf%ofCfu,afCf“fXfg□[f<,³,ê,Ä,ç,È,ç□ê□†□Af\
ftfgfEfffA,ðfCf“fXfg□[f<,·,é‘O,Éfe□[fv fhf
%ofCfu,ðfCf“fXfg□[f<,μ,È,¯,ê,î,È,è,Û,¹,ñ□Bfn□[fhfEfffA
fCf“fXfgfÆ□[fvf†f“,ìžè□†,í□Afe□[fv fhf%ofCfu,É•t’® ,μ,Ä,ç,éf}fjf...
fAf<,ðŽQ□Æ,μ,Ä,¾,³,ç□B

Backup Basics f\ftfgfEfffA,É,í□AvfXfef€ ,Ö,ìf\ftfgfEfffA,ìf□□[fh,Æ Windows
,ìfv□□fOf%of€ fOf<□[fv,ðŽ©“®“l,ÉfZfbfgfAfbfv,·,éfCf“fXfgfÆ□[fvf†f“
(fZfbfgfAfbfv) fvf□fOf%of€,ªŠÛ,Û,ê,Ä,ç,Û,·□B

’□^Ó Backup Basics for Windows ,ðfCf“fXfg□[f<,μ,½,èŽg—
p,·,é,½,ß,É,í□AWindows ,afXf^f“f_□[fh f,□[fh,Û,½,ífGf“fnf“fXfg
f,□[fh,Å“®□ì,μ,Ä,ç,È,¯,ê,î,È,è,Û,¹,ñ□B

□d—v Windows ,afXf^f“f_□[fh f,□[fh,Å“®□ì,μ□ABackup Basics ,ª“®□ì†,É
DOS ŒÝŠ·f{fbfNfX,Ö“ü,Á,½□ê□†,É,í□A—\Šú,¹,ÉŒ<%oÊ,ª“□¶,·,é,±,Æ,ª, ,è,Û,·□B

ŠÖ~A□€-Û

ft□fbfs□[fffBfXfN,ìfofbfNfAfbfv fRfs□[,ð□ì□→
f\ftfgfEfffA,ª‘g,Ý□ž,Û,ê,éfffBfŒfNfgfŠ□[
Backup Basics ,ìfCf“fXfg□[f<

ftf[]fbfs[] [fffBfXfN,lfobfNfAfbfv fRfs[][,đ[]ì[]¬

Backup Basics ,lfCf“fXfg[][f<,đŠŽn,·,é‘O,É[]ABackup Basics

ftf[]fbfs[] [fffBfXfN,lfRfs[][,đ[]ì[]¬,μ,Ä,,³/₄,³,ç[]BWindows ,lftf@fCf< f}f[][fWff,Å

[ftf[]fbfs[] [fffBfXfN,lfRfs[][] fRf}f“fh,đŽg—p,·,é,©[]A, ,é,ç,í DOS fvf[]f“fvfg,Å

DISKCOPY fRf}f“fh,đŽg—p,μ,Ä,,³/₄,³,ç[]BfIfŠfWfif<

fffBfXfN,í^À‘S,É[]ê[]Š,É•ÛŠÇ,μ[]AfCf“fXfgf[][]fVf†f“ ,É,lfRfs[][,đŽg—p,μ,Ä,-

,³/₄,³,ç[]B

ffBfCfNfgfŠ [

fvf fOf%of€ ,đfftfHf<fg,ÅfCf“fXfg [f< , ,é,Æ A^È%oº,ÉŽ| ,· 1
,À, ìffBfCfNfgfŠ [(BASICS) ,Æ 3 ,À, ìTfu fffBfCfNfgfŠ [,a ì ñ ,³, ê, Ü, · B

ffBfCfNfgfŠ [^Tfu “à—e
ffBfCfNfgfŠ [

\BASICS	1 ĆÂ, ìTfu ffBfCfNfgfŠ [AWIN
\BASICS\WIN	2 ĆÂ, ìTfu ffBfCfNfgfŠ [ADATA ,Æ CATALOG
\BASICS\WIN\DATA	Backup Basics , ìff [f^ ftf@fCf<
\BASICS\WIN\CATALOG	Backup Basics , ìjff^ f fO ftf@fCf<

ŠeffBfCfNfgfŠ [, ì-¼‘O, đ“ü—í, · , é, ½, ß, ìf {fbfNfX, a·\Ž| ,³, ê, Ü, · BffftfHf<fg-¼
(BASICS AWIN ADATA ACATALOG) , ì, Ü, Ü, É, · , é, ±, Æ, à, Å, «, Ü, · , μ A“ÆŽ ©, ì-
¼‘O, É· ì X, · , é, ±, Æ, à, Å, «, Ü, · B

Backup Basics ,lfCf“fXfg[]f<

Backup Basics f\ftgfeFfA,lfCf“fXfg[]f<,íA^È%º,ìžè[]#,Å[]s,Á,Ä,,¾,³,ç[]B

- 1** Backup Basics
ftf[]fbfs[][fffBfXfN,ðfffBfXfN fhf%ofCfu (,±
,ì—á,Å,lfhf%ofCfu a: ,ðžg—p)
,É’}“ü,μ,Û,·[]B
- 2** Windows fvf[]fOf%of€ f}f[]fWff,ì
[ftf@fCf<] f[]fj...[][,ðfNfŠfbfN,μ,Û,·[]B
- 3** [ftf@fCf<-¼,ðžw’è,μ,ÄŽÀ[]s]
,ðfNfŠfbfN,μ,Û,·[]B
- 4** fRf}f“fh f%ofCf“ f{fbfNfX,Å[]ABackup
Basics ftf[]fbfs[][fffBfXfN,ð’}“ü,μ,½fhf
%ofCfu-¼[]AfRf[]f“ ,É’±,ç,Ä setup ,Æ“ü—
í,μ,Û,·[]B
—á[]F
a:setup
- 5** [OK] ,ðfNfŠfbfN,μ,Û,·[]B
- 6** fCf“fXfgf[]fVf#f“ ,lfifvfVf#f“ ,ð’l’ð,μ,Û,·[]B
Backup Basics ,ì,Ý[]A Backup Basics fhf
%ofCfo,ì,Ý[]A, ,é,ç,í,» ,ì—
¼•ù,ðfCf“fXfg[]f<,ì,ç
,, ,é,©,ð’l’ð,Å,« ,Û,·[]B
- 7** ŽÀ[]sftf@fCf<[]Aff[]f^ ftf@fCf<[]Affj^f[]fO
ftf@fCf<,a’g,Ý[]ž,Û,é,éfffBf[]fNfgfŠ[][-
¼,ì“ü—í,ð—v<[]³,é,Û,·[]B
f
ftfgfEfFfA,a’g,Ý[]ž,Û,é,éfffBf[]fNfgfŠ[][,ðž
Q[]Æ,μ,Ä,,¾,³,ç[]B
- 8** ŽÀ[]sftf@fCf<,ð’g,Ý[]ž,[]è[]Š,É,·,Å,É
Backup Basics ,a’[]Y,μ,Ä,ç
,é[]è[]#[]Aff[]f^
ftf@fCf<,¾,¯,ðfCf“fXfg[]f< ,é,©,ð-
â,í,é,Û,·[]B[,í,ç] ,Æ“š,ì,½[]è[]#[]A.INI
ftf@fCf<,Æ EXCLUDE.RSS
ftf@fCf<,¾,¯,a’fCf“fXfg[]f<,³,é,Û,·[]B[]Æ,çf
o[]fWf#f“ ,ì Backup Basics ,a’[]Y,μ,Ä,ç
,É,ç
,©’², x ,é,½,β[]AZÀ[]sftf@fCf<,ìšì”[]æ,a’fXf
Lfff“ ,³,é,Û,·[]B
d—v Backup Basics for DOS

,afCf“fXfg[]f<,³,ê,Ä,ç
,éfffBfÇEfnfgfŠ[][,Æ“~ ,¶[]ê[]Š,É Backup
Basics for Windows
,ð’g,Ý[]ž,þ[]ê[]#[]ABackup Basics for
Windows ,lftf@fCf<-¼,Æ“~ ,¶-
¼’O,ðŽ[],Á,à,ì,í[]A[]’ ,«Š·,|,ç,ê,Ä,µ,Ü,ç
,Ü,·[]BBackup Basics for Windows
,lfCf“fXfg[]f<,Á,í[]AfffHf<fg,ìfffBfÇEfnfgfŠ
[][]^ftfu fffBfÇEfnfgfŠ[][-¼,ðŽg—p,·,é,±
,Æ,ðŠ©,ß,Ü,·[]B

9 Windows fvf[]fOf%of€ f}f[]fWff,É’Ç
%oÁ,³,ê,éfvf[]fOf%of€ fOf<[]fv,ì-¼’O,ð-
â,í,ê,Ü,·[]BŠù,É’¶[]Ý,·,é,à,ì,ðŽw’è,µ,½[]ê[]#
[]AfOf<[]fv,ð“ü,ê’Ö,|,é,©[]A, ,é,ç,ì Backup
Basics ,lfAfCfef€,ð’Ç%oÁ,·,é,©,ð-
â,í,ê,Ü,·[]B

10 Windows 3.0 ,a“ @[]ì,µ,Ä,ç
,é[]ê[]#[]ASYSTEM.INI
ftf@fCf<,ð·ï[]X,·,é,©,Ç,æ,©,ð-
â,í,ê,Ü,·[]BBackup Basics ,ðŽg—
p,·,é,É,í[]AfAfbvff[]fg,³,ê,½ VDMAD.386
fhf%ofCfo,ð SYSTEM.INI
ftf@fCf<,É“o~^,µ,È,~,ê,í,È,è,Ü,¹,ñ[]BNo
,ð’l,ñ,¾[]ê[]#,í[]AZ©·aŽ©[]M,Á
SYSTEM.INI
ftf@fCf<,ð·ï[]X,µ,È,~,ê,í,È,è,Ü,¹,ñ[]B

11 Yes ,ðfNfŠfbfN,µ,Ä README ftf@fCf<,ð·\
Ž|,µ,Ü,·[]B
’[]^Ó ,±,lftf@fCf<,í[]A·K, ,“Ç,ñ,Á,-
,¾,¾,ç[]B,±,lftf@fCf<,É,í[]Af}ffj...
fAf<,a^óü,³,ê,½Çä,É·ï[]X,³,ê,½[]î·ñ,aŠÜ,
Ü,ê,Ä,ç,Ü,·[]B

fvf[]fOf%of€ fOf<[]fv,É,í[]A^È%oº,ÉŽ|,· Backup
Basics ,l[]€-Ü,aŠÜ,Ü,ê,Ü,·[]B

Backup Basics fAfvfŠfP[]fVf#f“ fvf[]fOf%of€
DRIVERS.TXT README ftf@fCf<
READEME.TXT README ftf@fCf<

Windows fffBfÇEfnfgfŠ[][,É BEWINS.INI
ftf@fCf<,a’g,Ý[]ž,Ü,ê,Ü,·[]B

[fLfff“fZf<] f{f^f“ ,đfNfŠfbfN ,·,é,Æ□A,¢
 ,Á,À,àfZfbfGfAfbfv fvf□fOf%of€ ,đ□l—¹ ,·,é,±
 ,Æ,ª,Á,« ,Ü ,·□BfCf“fXfgfCE□[fVf#f“ ,ªŠ®—
¹ ,µ,½,ç□AfCf“fXfgfCE□[fVf#f“ ,ª□¬CE÷ ,µ,½,±
 ,Æ,đŽ! ,·f_fCfAf□fO f{fbfNfX ,ª·\
 Ž! ,ª ,é,Ü ,·□BREADME.TXT ftf@fCf< ,đ·\Ž! ,·,é,±
 ,Æ,à,Á,« ,Ü ,·□B

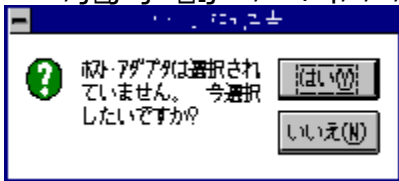
Backup Basics ,ìŠŽn

Backup Basics ,đŠŽn ,·,é,É,í□Afvf□fOf%of€ f}fI□[fWff,Á Backup Basics
 fAfCfRf“ ,đf_fuf<fNfŠfbfN ,µ,Ü ,·□B

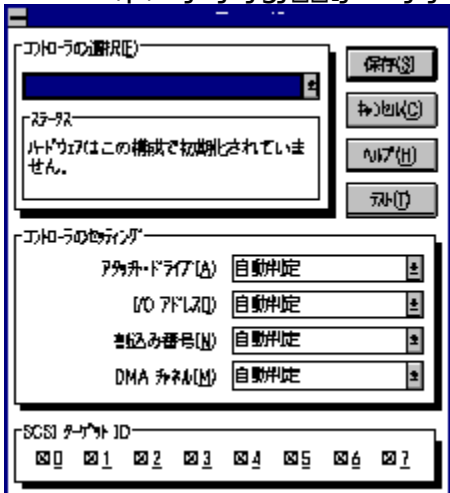
□Á□%o ,Éf\ftfgfEfFfA ,đ<N“® ,µ,½,Æ,« (, ,é,¢,í BEWINS.INI
 ftf@fCf< ,ªCE© ,Á,© ,ç,È,© ,Á,½,Æ,«) ,É,í□AŽg—p ,µ,Ä,¢ ,éRf“fgf□□[f%o ,đ Backup
 Basics ,ÉŽwŽ! ,µ,È, ¯ ,é,ì,È,è,Ü ,¹ ,ñ□BfRf“fgf□□[f%o ,đŽw’è ,·,é,½,ß ,ìfEfBf“fhfE ,ª·\
 Ž! ,ª ,é,Ü ,·□B



,± ,ìf_fCfAf□fO fEfBf“fhfE ,ì [fLfff“fZf<] ,đfNfŠfbfN ,µ,½□ê□#□A^È
 %o ,ìf□fbfZ□[fW ,ª·\Ž! ,ª ,é,Ü ,·□B



1. 'ì ,đ ,µ,½fRf“fgf□□[f%o ftfB□[f<fh ,ì ,· ,®%o ,ì ,É , ,é-î^óf{f^f“ ,đfNfŠfbfN ,µ,Ü ,·□B



2. fRf“fsf... [f^,ÉfCf“fXfg [f<,³,ê,Ä,ç,éfRf“fgf [f%o,ðfNfŠfbfN,μ,Ü,·□B

3. [•Û‘¶] ,ðfNfŠfbfN,μ,ÄfEfBf“fhfE,ð□I—¹,μ,Ü,·□B

Backup Basics ,ðŠŽn,·,é,Æ□A\ftfgfEfFfA,ÍVfXfef€,É□Ú‘±,³,ê,Ä,ç,éfe□[fv fhf %ofCfu,ðf`fFfbfN,μ,Ü,·□B\ftfgfEfFfA,³fn□[fhfEfFfA,Íf`fFfbfN,ð□s,Á,Ä,ç ,éSÔ□AfEfBf“fhfE,ì%oº•”,É, ,éfXfe□[f^fX fo□[Éf□fbfZ□[fW,ª•\Ž!,³,ê,Ü,·□B

f\ftfgfEfFfA,ì%oŠú%o»»,ª□I—¹,·,é,Æ□AfffBfXfN fhf%ofCfu fEfBf“fhfE,ªŠJ,«,Ü,·□BfffBfXfN fhf%ofCfu fEfBf“fhfE,É,Í□A,·,×,Ä,Íf□□[fff< fn□[fh fhf%ofCfu,ÌfAfCfRf“,ª•\Ž!,³,ê,Ü,·□B

fXfe□[f^fX fo□[É Ready f□fbfZ□[fW,ª•\Ž!,³,ê,é,Æ□AZÿ,ì‘€□ì,ðŠŽn,·,é,± ,Æ,ª,Á,«,Ü,·□BfofbfNfAfbfv^ÈŠO,ì‘€□ì,ð□s,¼□ê□‡,Í□A•K—v,É,ç,Í fffBfXfN fhf %ofCfu fEfBf“fhfE,ð•Â,¶,½,è□AfAfCfRf“%o»»,μ,Ä,à,©,Ü,ç,Ü,¹,ñ□B

fñjf...[] fo[]

Backup Basics ,đŠJŽn,·,é,Æ[]A%œ-Ê,ì[]Å[]ă•”,Éfñjf...[]fo[],ª•\
Ž|,³,ê,Û,·[]Bfñjf...[]fo[],É,æ,è[]ABackup Basics ,ì”<@”\,đŽg—p,·,é,±
,Æ,ª,Å,«,Û,·[]Bfñjf...[][,đ•\Ž|,·,é,É,í[]Afñjf...[][-¼,đfNfŠfbfN,μ,Û,·[]B
^È%œ,ì[]€-Ú,đfNfŠfbfN,·,é,Æ[]Afñjf...[]fo[],ìfRf}f“fh,ÉŠÖ,·,é[]î•ñ,ª•\
Ž|,³,ê,Û,·[]B:

ŠÖ~A[]€-Ú

'€[]ñfñjf...[]
fEfBf“fhfEfñjf...[]
fwf<fvfñjf...[]

'€ifffjff...l

'€ifffjff...l,É,íABackup Basics f\ftfgfEfFfA,ìžã—v,È<@”\,ªŠÜ,Ü,ê,Ä,ç,Ü,·B

**fofbfNfAf
bfv** 'l'ð,³,ê,½ftf@fCf<,ðAfffBfXfN,©,
çfe[fv,ÖfRfs[l,μ,Ü,·B

fŠfXfgfA 'l'ð,³,ê,½ftf@fCf<,ðAfe[fv,©,çff
fBfXfN,ÖfRfs[l,μ,Ü,·B

**fe[fv,ìjff
^fO** fe[fv'S'ì,ð“Ç,Ýo,μAfe[fv,ìjff^
fOî•ñ
(fofbfNfAfbfvfZfbfg,âfffBfÇfNfgfŠ
[l,Æftf@fCf<,ìî•ñ)
,ðfffBfXfNã,ìjff^fO,É'Ç
%oA,μ,Ü,·B

**fjf^fO,ìj
f“fefif“f
X** fjf^fO,É“o~^,³,ê,Ä,ç
,é,·,x,Ä,ìfe[fv,ìê——,ð\
Ž!,μAfjf^fOî•ñ,³,ê,½fe[fv,ð
'S'ì,©,ç•”•ª,Ö•İŠ·,μ,Ü,·B[fjf^fO,
ìf“fefif“fX]
,É,æ,èAfffBfXfNã,ìjff^fO,©,ç
fe[fv,ðíœ,·,é,±,Æ,à,Á,«,Ü,·B

**fe[fv,ìŠª
,«¹¼,μ** fe[fv'S'·,ð^ê'UŠª,«Žæ,èA,‘¬,É
Šª,«-
ß,μ,Äfe[fv,ìfef“fvf‡f“,ð<ì^ê,É,·,é,
±,Æ,ðAfe[fvfhf
%ofCfu,ÉŽwŽ!,μ,Ü,·B4mm ,â
8mm ,ìfe[fvfhf
%ofCfu,É'í,μ,Ä,íA,±,ì'€î,í•K—v,
,è,Ü,¹,ñB

**fe[fv“à—
e,ìÁ<Ž** ff[f^,Æ<@-
§î•ñ,ðAfe[fv,©,çíœ,μ,Ü,·B
Backup Backup Exec f\
**Exec,É,Â,
ç,Ä** ftfgfEfFfA,ÉŠÖ,·,éfAfbfvfOfÇ[fh
î•ñ,ð\Ž!,μ,Ü,·B
l—¹ Backup Basics f\ftfgfEfFfA,ðl—
¹,μ,Ü,·B

fEfBf“fhfEfjff...l

,±,ìfjff...l,ðžg—p,μ,ÄAfEfBf“fhfE,ð\Ž!,·,é•û-@,ðžw'è,Á,«,Ü,·Bfjff...
l,ðfhf[fbvf_fEf“,μ,ÄAfCfRf“%o»,³,ê,½fEfBf“fhfE,ð'l'ð,μA,»ê,ðŠ),±
,Æ,à,Á,«,Ü,·B (f`fFfbfNf}lN,É,æ,èÇ»YŠJ,ç,Ä,ç,éfEfBf“fhfE,ðŽ!,μ,Ü,·B)

□d,Ě,Ä•\Ž!	Šj,č,Ä,č ,éŠefEjBf“fhfE,ð□Af^fCfjg< fo□[,ªCE©,!,é,æ,ɹ,É□d,Ě,Ä•\ Ž!,μ,Ü,·□B
•Ä,x,Ä•\ Ž!	Šj,č,Ä,č,éŠefOf<□[fv fEfBf“fhfE,lfTfCfY,ð'²□®,μ□A— x,è□‡,ɹ,æ,ɹ,É•Ä,x,Ä•\ Ž!,μ,Ü,·□B
□Ä□V,ì□ó'Ô ,ð•\Ž!	fAfNfefBfu,ÈfEfBf“fhfE,ì“à— e,ð□Ä•\Ž!,μ,Ü,·□B
,·,x,Ä•Ä,¶, é	fAfvfŠfP□[fVf‡f“ fEfBf“fhfE^ÈŠO,ì,·,x,Ä,lfEfBf“fhfE ,ð•Ä,¶,Ü,·□BfffBfXfN fhf%ofCfu fEfBf“fhfE,â Tapes fEfBf“fhfE,Í□AfEfBf“fhfE fAfCfRf“,É,É,è,Ü,·□B
fAfCfRf“,ì □®—ñ	•\Ž!,³,é,Ä,č,é,·,x,Ä,lfEfBf“fhfE fAfCfRf“,ð□®—ñ,³,¹,Ü,·□B

fwf<fvf□ffj...□[

flf“f%ofCf“fwf<fv,ðŠjŽn,μ,Ü,·□B

-ÚŽŸ	Ží•Ê,²,Æ,ÉfOf<□[fv•ª,¯,³,é,½fwf<f v□€-Ú,ì^ê—,ð•\Ž!,μ,Ü,·□B
fL□[f{□[fh	fL□[f{□[fhfRf}f“fh,Æ,»,ì<@“\,ì^ê —,ð•\Ž!,μ,Ü,·□B
fRf}f“fh	Šef}ffj...fAf<fRf}f“fh,ì^ê—,ð•\ Ž!,μ□A,»,ì<@“\,ð□à-¾,μ,Ü,·□B
fvf□fV□[fw ff	f\ftfgfEfFfA,ìŽg—p•û- @,ðfXfefbfv fofC fXfefbfv,Å %oð□à,μ,Ü,·□B
fwf<fv,ìŽg, ç•û	fwf<fv<@“\,ðŽg—p,·,é•û-@,ð□à- ¾,μ,Ü,·□B
Backup Basics,É,Ä ,ç,Ä	□»•i,ìfo□[fWf‡f“,ÉŠÖ,·,é□î•ñ,ð•\ Ž!,μ,Ü,·□B

‘l’ðfo□[

‘l’ðfo□[,í%œ-Ê□ă•”,lf□ffj...□[fo□[,ì%œ,É•\Ž!,³,é,Ü,·□B

'l'đfo□[,É,Í□Afnfšfbfn,É,æ,Á,Ä^È%°°,ì'€□ì,đ□s,±,±,Æ,ª,Å,« ,éf{f^f" ,ªŠÜ,Ü,ê,Ä,đ ,Ü,·□B

**fofbfNfAfb
fv** fofbfNfAfbfv,đŠŽn,· ,éf{f^f" ,Å,·□
B[fofbfNfAfbfv]

fšXfgfA fšXfgfA,đŠŽn,· ,éf{f^f" ,Å,·□B[fš
fXfgfA]

šª,«'¼,µ fe□[fv'S'·,đ^ê'Ušª,«Žæ,è□A□, '¬,
Éšª,«-
ß,µ,Äfe□[fv,lfef"fvfþf" ,đ<î^ê,É,· ,é,
±,Æ,đ□Afe□[fvfhf
%ofCfu,ÉžwŽ!,µ,Ü,·□B4mm ,â
8mm ,lfe□[fvfhf
%ofCfu,É'Í,µ,Ä,Í□A,±,ì'€□ì,Í•K-v,
,è,Ü,¹,ñ□B

□Á<Ž ff□[f^ ,Æ<@-
š□î•ñ,đ□Afe□[fv,©,ç□í□œ,· ,é,½,ß
,lf{f^f" ,Å,·□B

flfvfvþf" Backup Exec for Windows
,ÉšÖ,· ,éfAfbfvfOfœ□[fh□î•ñ,đ·\
Ž!,µ,Ü,·□B .

□l—¹ Backup Basics f\ftfgfEfffA,đ□l—
¹,µ,Ü,·□B

%°°æ-Ê%°°°" ,ì·\Ž!□€-Ú

Backup Basics ,đŠŽn,· ,é,Æ□A%°°æ-Ê%°°°" ,Éfhf%ofCfu,Æfe□[fv,lfAfcfrf" ,ª·\
Ž!,³,ê,Ü,·□B,±,ê,ç,lfAfcfrf" ,đfnfšfbfn,· ,é,Æ□AfffBfxfn fhf%ofCfu fEfbf"fhfE,â
fe□[fvfEfbf"fhfE,ª·\Ž!,³,ê,Ü,·□BfffBfxfn fhf%ofCfu
fEfbf"fhfE,đ·Ä,¶,é,Æ□AfffBfxfn fhf%ofCfu,lfAfcfrf" ,ª%°°æ-Ê%°°°" ,É·\
Ž!,³,ê,Ü,·□B" —l,É□Afe□[fv fEfbf"fhfE,đ·Ä,¶,é,Æ□Afe□[fv fAfcfrf" ,ª%°°æ-Ê
%°°°" ,É·\Ž!,³,ê,Ü,·□B

Backup Basics fEfbf"fhfE,ì%°°°" ,É,Í□Afxfe□[f^fx fo□[,ª·\Ž!,³,ê,Ü,·□B,±,±
,É,Í□ABackup Basics ,lfXfe□[f^fx,ÉšÖ,· ,éf□fbfZ□[fw,ª·\Ž!,³,ê,Ü,·□B

fGf%o[] f[]fbfZ[]fW

^È%oo°,ÉfGf%oo[] f[]fbfZ[]fW,Æ[]A,» ,lCE´^ö,ð%oðCE^ , ,é,½,ß,ì•û-@,ðŽ!,µ,Ü,·[]B^È
%oo°,ì•û-@,Å,àfGf%oo[],,ª%oðCE^ ,µ,È,ç[]ê[]±,â[]A^È%oo°,ÉŽ!,µ,½fGf%oo>[] ^ÈŠO,ì-
â´è,ª”[]¶,µ,½[]ê[]±,É,í[]A[]»•i,ð[]w“ü,µ,½ffB[]f%oo[],,É~A—[],µ,Ä,,¾,¾,ç[]B

•\Ž!

fn[]f[]fhfE[]F[]f[]A fGf
%oo[],,ªCEÿ[]o,¾,ê,Ü
,µ,½[]B,±,ì-â´è,ð
%oðCE^ , ,é,½,ß,ì, ,
x,Ä,ìŽŽ,Ý,íŽ, ”s,µ,
Ü,µ,½[]BBackup
Basics ,ð[]|—
¹,µ,Ä,,¾,¾,ç[]B[]^
—[],ðCEp´±
, ,é,ì,íŠèCE-,Å,·[]B

-â´è“ _

Backup Basics
,ð[]|—
¹,µ,È, -,ê,î,È,ç,È,çf
Gf%oo[],,ª”-
[]¶,µ,Ü,µ,½[]B

%oðCE^•û-@

^ê´U Backup
Basics ,ð[]|—
¹,µ,Ä[]ABackup
Basics
,ð[]ÄŠJ,µ,Ü,·[]B

fn[]f[]fhfE[]F[]f[]A fGf
%oo[],,ªCEÿ[]o,¾,ê,Ü
,µ,½[]Bfn[]f[]fhfE[]F[]f[]
A,lfefXfg,ð[]s,Å,Ä-
â´è,ìCE
´^ö,ð´Ç<[],µ,Ü,·,©
[]H

Backup Basics
,lfef[]f[]v f[]h[]f
%ofCfu,ÉfAfNfZfX,
Å,«,Ü,¹,ñ[]B

fe[]f[]v f[]h[]f
%ofCfu,ì[]Ú´±
,ðf`f[]F[]b[]f[]N,µ[]A[, ,í,
ç] ,Æ
%ož“š,µ,Äfn[]f[]h[]f[]E
f[]F[]A,ðf[]e[]f[]X[]f[]g,µ,Ü,·
[]B

f[]h[]f[]%ofCfu,ª
%ož“š,µ,Ü,¹,ñ[]B

Backup Basics
,lfef[]f[]v f[]h[]f
%ofCfu,ÉfAfNfZfX,
Å,«,Ü,¹,ñ[]B

fe[]f[]v f[]h[]f
%ofCfu,ì[]Ú´±
,ðf`f[]F[]b[]f[]N,µ[]A[, ,í,
ç] ,Æ
%ož“š,µ,Äfn[]f[]h[]f[]E
f[]F[]A,ðf[]e[]f[]X[]f[]g,µ,Ü,·
[]B

[]œŠOfXfNfŠfVfgE
XCLUDE.RSS,ªCEÿ
[]o,Å,«,Ü,¹,ñ[]B

%o½,ç,©,ì—[]—
R,Å EXCLUDE.RSS
ftf@fCf<,ªí[]œ,¾,ê
,Å,ç,Ü,·[]B

EXCLUDE.RSS
ftf@fCf<,ð[]V,½,É[]
ì[]¬, ,é,©[]ABackup
Basics for
Windows f\
ftfgfE[]F[]f[]A,ð[]ÄfCf“
fXfg[]f[]<,µ,Ä,-
,¾,¾,ç[]B

[ftf@fCf<-1/4],l'v-
1/2"lfGf%o[]B

Backup Basics
,lfe[]fv fhf
%ofCfu,ÉfAfNfZfX,
Å,«,Ü,¹,ñ[]B

Backup Basics
,ð[]l—¹,μ,Äfe[]fv
fhf%ofCfu,l" dÆ¹,ð
OFF ,É,μ[]Afe[]fv
fhf%ofCfu,l[]Ú'±
,ðf`fFbfN,μ,Ä,-
,^{3/4},³,ç[]B,»,lÆãfe
[]fv fhf
%ofCfu,l" dÆ¹,ð
ON ,É,μ,Ä Backup
Basics
,ð[]ÄŠJ,μ,Ü,·[]B

[ftf@fCf<-1/4]
,lfe[]fv
ftfH[]f}fbfg,l•s[]³,
Å,·[]B

Backup Basics
,lfe[]fv fhf
%ofCfu,ÉfAfNfZfX,
Å,«,Ü,¹,ñ[]B

Backup Basics
,ð[]l—¹,μ,Äfe[]fv
fhf%ofCfu,l" dÆ¹,ð
OFF ,É,μ[]Afe[]fv
fhf%ofCfu,l[]Ú'±
,ðf`fFbfN,μ,Ä,-
,^{3/4},³,ç[]B,»,lÆãfe
[]fv fhf
%ofCfu,l" dÆ¹,ð
ON ,É,μ,Ä Backup
Basics
,ð[]ÄŠJ,μ,Ü,·[]B

[fhf%ofCfu-1/4]
,ÅŽw'è,³,è,1/2fe[]f
v,É,"-,é"l'—fGf
%o[][,a"-
[]¶,μ,Ü,μ,1/2[]B

Backup Basics
,lfe[]fv fhf
%ofCfu,ÉfAfNfZfX,
Å,«,Ü,¹,ñ[]B

Backup Basics
,ð[]l—¹,μ,Äfe[]fv
fhf%ofCfu,l" dÆ¹,ð
OFF ,É,μ[]Afe[]fv
fhf%ofCfu,l[]Ú'±
,ðf`fFbfN,μ,Ä,-
,^{3/4},³,ç[]B,»,lÆãfe
[]fv fhf
%ofCfu,l" dÆ¹,ð
ON ,É,μ,Ä Backup
Basics
,ð[]ÄŠJ,μ,Ü,·[]B

ftf@fCf<-1/4,a[]³,μ,,
,è,Ü,¹,ñ[]B

ftf@fCf<-1/4,É DOS
,ÅŽg—
p,Å,«,È,ç•¶Žš,aŠ
Ü,Ü,è,Ä,ç,Ü,·[]B

ftf@fCf<-1/4,ð[]³,μ,-
"ü—l,μ,Ü,·[]B

DOS ,lf}fjf...
fAf<,đZQÆ,μ,Ä,-
,^{3/4,3},ç□B

[ftf@fCf<-1/4]
,lŽw'è,³μ,, ,è,Ü
,¹,ñ□B

ftf@fCf<-1/4,É DOS
,ÅŽg—
p,Å,«,È,ç•¶Žš,³Š
Ü,Ü,é,Ä,ç,Ü,·□B
DOS ,lf}fjf...
fAf<,đZQÆ,μ,Ä,-
,^{3/4,3},ç□B

ftf@fCf<-1/4,đ□³,μ,-
“ü—í,μ,Ü,·□B

fe□[fv,³Žÿ,ì'€□ì,É
•s“K□Ø,È,à,ì,Ä,·□
B

f□□[fh,³,é,Ä,ç
,éfe□[fv,í□Af}f<f`
fe□[fv
ftf@f~fŠ□[ì,à,ì,Ä,
í, ,è,Ü,¹,ñ□B

□³,μ,çfe□[fv,đ“ü,é
,Ä,^{3/4,3},ç□B

ftf@fCf<
fnf“fhf<,ì□”,³•s'«,
μ,Ä,ç,Ü,·□B

fvXfef€,ÅŠJ,ç,Ä,ç
,éftf@fCf<,³1/2,·,-
,Ü,·□B

,ç,-
,Ä,©,ìftf@fCf<,đ•
Ä,¶,é,©□A^è'U
Backup Basics ,Æ
Windows ,đ□—
¹,μ,Ä CONFIG.SYS
ftf@fCf<,ì FILES=
fXfe□[fgf□f“fg,ì'l,đ
'□,â,μ□AfRf“fsf...
□[f^,đ,èfXf^□[fg,
μ,Ä□Ä“xŽŽ,μ,Ä,-
,^{3/4,3},ç□B

fe□[fv,ì□#”Ô,³ŠÔ^
á,Ä,Ä,ç,Ü,·□B,±
,lfe□[fv
ftf@f~fŠ□[ì 1 -
{,đ“ü,é,Ä,-
,^{3/4,3},ç□B

,±,lfe□[fv,lf}f<f`
fe□[fv
ftf@f~fŠ□[ì 1
•”,Ä, ,è□Af□□[fh,μ
,^{1/2}fe□[fv,í□#”Ô,³Š
Ô^á,Ä,Ä,ç,Ü,·□B

fe□[fv,đŽæ,è□o,μ
□A□³,μ,çfe□[fv,đ“
ü,é,Ä,^{3/4,3},ç□B

[fhf%ofCfu-1/4]
,ÅŽw'è,³,é,^{1/2}fe□[f
v,ì□^—□fgf
%□□□B

Backup Basics
,lfe□[fv fhf
%ofCfu,ÉfAfNfZfX,
Ä,«,Ü,¹,ñ□B

Backup Basics
,đ□—¹,μ,Äfe□[fv
fhf%ofCfu,ì“d€¹,đ
OFF ,É,μ□Afe□[fv
fhf%ofCfu,ì□Ú'±

,đf` fFbfN,μ,Ä,-
,^{3/4,3},ç□B,» ,ìĈäfe
□[fv fhf
%ofCfu,ì“dĈ¹,đ
ON ,É,μ,Ä Backup
Basics
,đ□ÄŠJ,μ,Ü,·□B

fpfX-^{1/4},Éfhf
%ofCfuŽw'è•ŕŽš,
đŠÜ,ß,é,±
,Æ,í,Ä,« ,Ü,¹,ñ□B

fpfX-^{1/4},Éfhf
%ofCfuŽw'è•ŕŽš
(—á,í,í□A
c:□Ad:□Ag: “™)
,đŠÜ,Ü,ê,Ä,ç
,Ü,·□B

fhf
%ofCfuŽw'è•ŕŽš,
đŽæ,è□œ,«□A□Ä“
xŽŽ,μ,Ä,,^{3/4,3},ç□B

fpfX-^{1/4},Éftf@fCf<-
^{1/4},đŠÜ,ß,é,±
,Æ,í,Ä,« ,Ü,¹,ñ□B

fpfX-^{1/4},Éftf@fCf<-
^{1/4},đŠÜ,Ü,ê,Ä,ç
,Ü,·□B

ftf@fCf<-
^{1/4},đŽæ,è□œ,«□A□
Ä“xŽŽ,μ,Ä,-
,^{3/4,3},ç□B

[fffofCfX-^{1/4}]
,Ä'í'đ,³,ê,^{1/2},à,ì,đ□
A'€□ì,Ä,« ,Ü,¹,ñ□B

'í'đ,³,ê,^{1/2}fffofCfX,í
Žg—p,Ä,« ,Ü,¹,ñ□B

-
â'è,đŽæ,è□œ,«□A
□Ä“xŽŽ,μ,Ä,-
,^{3/4,3},ç□B

[fhf%ofCfu-^{1/4}]
,ÄŽw'è,³,ê,^{1/2}fe□[f
v,í“FŽ⁻,Ä,« ,Ü,¹,ñ□
B

Backup Basics
,í,±
,ìfe□[fv,đ“Ç,Ý□o,¹
Ü,¹,ñ□BBackup
Basics
,ÆĈÝŠ·□« ,đŽ□,Ä,
Ä,ç,È,çf\
ftfgfEfffA,Ä□ì□-,³
,ê,^{1/2}%oÄ“\□« ,đ ,è,
Ü,·□B

'^{1/4},ìfe□[fv,đ“ü,ê,é
,©□A,±
,ìfe□[fv,đ□ÄčŽ,μ,Ä
,,^{3/4,3},ç□B

[fhf%ofCfu-^{1/4}]
,ÄŽw'è,³,ê,^{1/2}fe□[f
v,í“FŽ⁻,Ä,« ,Ü,□A“Ç,
Ý□o,¹,Ü,¹,ñ□B

Backup Basics
,í,±
,ìfe□[fv,đ“Ç,Ý□o,¹
Ü,¹,ñ□BBackup
Basics
,ÆĈÝŠ·□« ,đŽ□,Ä,
Ä,ç,È,çf\
ftfgfEfffA,Ä□ì□-,³
,ê,^{1/2}%oÄ“\□« ,đ ,è,
Ü,·□B

'^{1/4},ìfe□[fv,đ“ü,ê,é
,©□A,±
,ìfe□[fv,đ□ÄčŽ,μ,Ä
,,^{3/4,3},ç□B

Ü, · □ B

f h f % o f C f u " à , ì
f e □ [f v , ì f j f ^ f □ f O , ©
, ç □ í □ œ , Å , « , Ü , ¹ , ñ □
B

f e □ [f v f h f
% o f C f u , É f □ □ [f h , ³ , ê
, Å , ç
, é , ½ , ß □ A f j f ^ f □ f O ,
© , ç f e □ [f v , ð □ í □ œ , ·
, é , ±
, Æ , ^a , Å , « , Ü , ¹ , ñ □ B

f e □ [f v , ð f e □ [f v f h f
% o f C f u , © , ç Z æ , è Š
O , μ , Å □ A f j f ^ f □ f O ,
© , ç f e □ [f v , ð □ í □ œ ,
μ , Ü , · □ B

, ± , ì f v f □ f O f % o f €
, ð Ž Å □ s , · , é , É , Í
Microsoft
Windows , ^a · K —
v , Å , · □ B

Windows
Š Å « , ì Š O · " , Å f v f □ f
O f % o f €
, ð f C f " f X f g □ [f < , μ , æ
, x , Æ , μ , Å , ç , Ü , · □ B

Backup Basics for
Windows
, í □ A Windows
f v f □ f O f % o f €
f } f l □ [f W f f , ð Ž g —
p , μ , Å f C f " f X f g □ [f < ,
μ , È , - , ê , Í , È , è , Ü , ¹ , ñ
□ B

Backup Basics
, ì f C f " f X f g □ [f < , ð Ž Q
□ Æ , μ , Å , , ³/₄ , ³ , ç □ B

f j f ^ f □ f O , ì □ □ ¬ , ^a Š
® — ¹ , μ , Å , ç
, Ü , ¹ , ñ □ B

f o f b f N f A f b f v
f Z f b f g , ì f j f ^ f □ f O □ ì
□ ¬ , í Š ® — ¹ , μ , Å , ç
, Ü , ¹ , ñ □ B f o f b f N f A f
b f v
f Z f b f g , ^a · ; □ " , ì f e □ [f
v , È , Ü , ½ , ^a , Å , Å , ç
, é , © □ A , Ü , ½ , ì f j f ^ f
□ f O □ ì □ ¬ , ^a Š ® —
¹ , · , é ' O , É ' t ' f , ³ , ê , Ä ,
ç , Ü , · □ B

f o f b f N f A f b f v
f Z f b f g , ì f j f ^ f □ f O , ð
□ A □ Å " x □ ì □ ¬ , μ , Å , -
, ³/₄ , ³ , ç □ B

· \ Ž | , · , é ' O , É , ±
, ì f Z f b f g , ì f j f ^ f □ f O ,
ð □ ì □ ¬ , μ , È , - , ê , Í , È ,
è , Ü , ¹ , ñ □ B

, ±
, ì f e □ [f v , ì f j f ^ f □ f O , í
□ A · " · ^a " Ì , É □ ì □ ¬ , ³ ,
ê , Å , ç , Ü , · □ B

f e □ [f v ' S ' ì , ì f j f ^ f □ f
O , ð □ ì □ ¬ , μ , Å , -
, ³/₄ , ³ , ç □ B

· \ Ž | , · , é ' O , É , ±
, ì f Z f b f g , ì f j f ^ f □ f O ,
ð □ ì □ ¬ , μ , È , - , ê , Í , È ,
è , Ü , ¹ , ñ □ B

, ±
, ì f e □ [f v , ì f j f ^ f □ f O , í
□ A · " · ^a " Ì , É □ ì □ ¬ , ³ ,
ê , Å , ç , Ü , · □ B

f e □ [f v ' S ' ì , ì f j f ^ f □ f
O , ð □ ì □ ¬ , μ , Å , -
, ³/₄ , ³ , ç □ B

<p>[ftf@fCf<-¼] ,Åžw'è,³,ê,½ftf@f Cf<,ðŠ],¹,Ü,¹,ñ□B</p>	<p>Backup Basics ,²□AfofbfNfAfbfv□ ^— □'t,Éftf@fCf<,lfl□[f vf",ÉŽ,"s,μ,Ü,μ,½ □B</p>	<p>,ç,- ,Å,©,lftf@fCf<,ð• Å,¶,é,©□A^ê'U Backup Basics ,Æ Windows ,ð□l— ¹,μ,Å CONFIG.SYS ftf@fCf<,l FILES= fXfe□[fgf□f"fg,l'l,ð '□,â,μ□Afrf"fsf... □[f^,ð,èfXf^□[fg, μ,Å□Ä"xŽŽ,μ,Å,- ,¾,³,ç□B</p>
--	--	---

<p>[fhf%ofCfu-¼] "à,lfe□[fv,ð"Ç,Ý□o ,¹,Ü,¹,ñ□B</p>	<p>Backup Basics ,lfe□[fv fhf %ofCfu,ÉfAfNfZfX, Å,«,Ü,¹,ñ□B</p>	<p>Backup Basics ,ð□l—¹,μ,Äfe□[fv fhf%ofCfu,l"dœ¹,ð OFF ,É,μ□Afe□[fv fhf%ofCfu,l□Ú'± ,ðf`fFfbfN,μ,Ä,- ,¾,³,ç□B,»,lœãfe □[fv fhf %ofCfu,l"dœ¹,ð ON ,É,μ,Ä Backup Basics ,ð□ÄŠJ,μ,Ü,·□B</p>
--	---	--

<p>[fhf%ofCfu-¼] "à,lfe□[fv,É□',«□ž, ß,Ü,¹,ñ□B</p>	<p>Backup Basics ,lfe□[fv fhf %ofCfu,ÉfAfNfZfX, Å,«,Ü,¹,ñ□B</p>	<p>Backup Basics ,ð□l—¹,μ,Äfe□[fv fhf%ofCfu,l"dœ¹,ð OFF ,É,μ□Afe□[fv fhf%ofCfu,l□Ú'± ,ðf`fFfbfN,μ,Ä,- ,¾,³,ç□B,»,lœãfe □[fv fhf %ofCfu,l"dœ¹,ð ON ,É,μ,Ä Backup Basics ,ð□ÄŠJ,μ,Ü,·□B</p>
---	---	--

<p>[ftf@fCf<-¼] ,Åžw'è,³,ê,½ftf@f Cf<,l—\ Šú,μ,È,ç^Ê'u,Å□Af</p>	<p>fofbfNfAfbfv,²Š® — ¹,·,é'O,É't'f,³,ê,½, à,l,Å,·□B</p>	<p>□Ä"xfofbfNfAfbfv' €□l,É-ß,Å,Ä,- ,¾,³,ç□B</p>
---	--	--

ofbfNfAfbfv
fZfbfg,ª□|—
¹,µ,Û,µ,½□B

Œx□□□ife□[fv,ì□‡” f}f<f` fe□[fv,ðŽg fe□[fv,ðŽæ,è□o,µ
Ô,ªŠÔ^á,Á,Ä,ç —p,µ,Ä,ç □A□³,µ,ç□‡”Ô,ife□
,Û,·□B ,é,Æ,«,É□A□‡”Ô,ì [fv,ð“ü,ê,Ä,-
ŠÔ^á,Á,Ä,ç ,³/₄,³,ç□B
,éfe□[fv,ðf□□[fh,µ
,Û,µ,½□B

Œx□□□ife□[fv # ,±,ife□[fv,íf}f<f` fe□[fv,ðŽæ,è□o,µ
[“Ô□†] fe□[fv □A□³,µ,çfe□[fv,ð“
,ì□‡”Ô,ªŠÔ^á,Á,Ä,ç ftf@f~fŠ□[,ì^ê•”• ü,ê,Ä□Ä“xŽŽ,µ,Ä,-
ç,Û,·□B ,ª,Ä, ,è□Af□□[fh,µ, ,³/₄,³,ç□B
½fe□[fv,í□‡”Ô,ªŠ
Ô^á,Á,Ä,ç,Û,·□B

□‡”Ô,ìŠÔ^á,Á,Ä,ç ,±,ife□[fv,íf}f<f` fe□[fv,ðŽæ,è□o,µ
,éfe□[fv,Åfj^f□fO fe□[fv □A□³,µ,çfe□[fv,ð“
,ð□i□¬,µ,æ,π ftf@f~fŠ□[,ì^ê•”• ü,ê,Ä□Ä“xŽŽ,µ,Ä,-
,Æ,µ,Ä,ç,Û,·□B ,ª,Ä, ,è□Af□□[fh,µ, ,³/₄,³,ç□B
½fe□[fv,í□‡”Ô,ªŠ
Ô^á,Á,Ä,ç,Û,·□B

—pŒê%oð□à

Backup Basics fhf%ofCfo
EXCLUDE.RSS
fAfCfRf“
fCf“fNfŠf□f“f^f<
fOf%oftfBf]f< ft□[fU□[fCf“f^ftfF□[fX (GUI)
fRf“fgf□□[f%o
□.•ª
□ó<µ,É%ož,¶,½fwf<fv
fXfe□[f^fX fo□[
fm□[f}f<
fn□[fhfEfFfA fGf%o□[
fofbfNfAfbfv
fofbfNfAfbfv fZfbfg
fŠfXfgfA

fofbfNfAfbfv

fofbfNfAfbfv,Æ,Í□Afe□[fv,È,Ç,ì□M—Š□«,ì, ,éf□fffBfA,Éf□□[fNfXfe□[fVf#f“□ă,ìftf@f
Cf<,ðfRfs□[.μ□AŠi”[.,é%oß'ö,Å,·□B

Backup Basics fhf%oofCfo

Backup Basics fhf%oofCfo, í AfRf“fgf[]f%oo, Æfe[]fv fhf%oofCfu, É'í%ož, μ, Ä, ç, Ü, ·B, ±, ê, í ABackup Basics fjtfgfEjFfA, Æ^ê[] , É'ñ<Ý,³, ê, Ü, ·B

fofbfNfAfbfv fZfbfg

fe[fv,É,Đ,Æ,Ü,Æ,ß,É,μ,ÄŠi”[,³,ê,½fffBfÆfNfgfŠ[.âftf@fCf<,lfOf<[fv,Å,·B

□ó<μ,É%ž,¶,½fwf<fv

□ó<μ,É%ž,¶,½fwf<fv,É,æ,Á,Ä□AŽg—p,μ,Ä,ç,éfEfBf“fhfE,â□^—□’t,ì□ó<μ,É’
%ž,μ,½□î•ñ,^añ<ÿ,³,ê,Ü,·□B<F1> fL□[,đ%ž,·,©□A□Å’O,ì [fwf<fv]
f{f^f“,đfNfŠfbfN,μ,Ä□A□ó<μ,É%ž,¶,½fwf<fv,ÉfAfNfZfX,μ,Ü,·□B

fRf“fgf□□[f%oo

fRf“fgf□□[f%oo,Íf□□[fNfXfe□[fVf#f“,Æfe□[fv fhf%ofCfu,đ□Ú'±,μ□A,±,ê,ç 2
,Â,Ìfn□[fhfEfFfA,â'ŠŒÝ,É□î•ñ,đŽó,~“n,•û-@,đŒ^'è,μ,Û,·□B

□••a

□••afobfNfAfbfv,É,í□A□ÅÆã,lfm□[f]f<
fobfNfAfbfv^È□~É•ï□X,³,ê,½ftf@fCf<,âï□¬,³,ê,½ftf@fCf<,ì,Ý,^aŠÜ,Ü,ê□Aftf@fC
f<,lfA□[f]fCfu ftf%ofO,É,í%oe<ζ,μ,Ü,¹,ñ□B

EXCLUDE.RSS

Backup Basics ,l^—,©,çœŠO,³,ê,éftj@fCf<,lfŠfXfgB

fOf%oofBfJf< ft[]fU[] fCf“f^ftfF[]fX (GUI)

fRf“fsf...[]f^%oæ-Ê[]ã,É[]î•ñ,ð•\Ž!,·,é,½,ß,É Windows ,ÅŽg—p,³,ê,Ä,ç
,éŽè'i[]B,±,}fCf“f^[]ftfF[]fX,ífefLfXfg fx[]fX,Å,Í,È,fOf%oofBfbfN
fx[]fX,Å[]s,í,ê[]AfAfCfRf“,ðŽg—p,μ,Å[]î•ñ,ÉfAfNfZfX,·,é,±,Æ,³,Å,«,Ü,·[]B

fn[fhfEjFfA fGf%o[

fn[fhfEjFfA fGf%o[,íAf[fNfXfe[fVf#f“, ,é,ç,lfe[fv fhf%ofCfu,»,ì,à,ì,É-
â'è,^a, ,éê#É”¶,μ,Û,·B

fAfCfRf“

fAfCfRf“,Æ,íAWindows ,É,“,ç,ÄfAfvfŠfP[fVf‡f“,â,»,ì¼,ì<@“\,ð•\
Œ»,μ,½¬,³,ÈŠG,Å,·Bf}fEjX,ÅfAfCfRf“,ðfNfŠfbfN,μ,ÄAfAfvfŠfP[fVf‡f“
,ðfAfNfefBfu,É,μ,½,èAfAfCfRf“,É'î%ž,·,é<@“\,ðŽg—p,·,é,±,Æ,ª,Å,«,Ü,·B

fCf“fNfŠf□f“f^f<

fCf“fNfŠf□f“f^f< fofbfNfAfbfv,É,í□A□ÅĀě,lfm□[f}f<
fofbfNfAfbfv^È□~ ,É•İ□X,³,ê,½ftf@fCf<,â□ì□¬,³,ê,½ftf@fCf<,ì,Ý,³ŠÜ,Ü,ê□AŠeftf@
fCf<,lfA□[f]fCfu ftf%ofO,É,í□gfofbfNfAfbfv□İ,Ý□h,³□Y’è,³,ê,Ü,·□B

fm[f]f<

fm[f]f<

fobfNfAfbfv,É,í[AfffofCfX[ä,ì,·,×,Ä,ìftf@fCf<,ŠÜ,Ü,ê[AŠeftf@fCf<,ìfA[f]fCfu
ftf%ofO,É,í[gfofbfNfAfbfv[í,Ý[h,Š[Ý'è,³,ê,Ü,·[B

fŠXfgfA

fŠXfgfA,Æ,ÍAfe[fv,ÉfofbfNfAfbfv,³,ê,¹/₂ftf@fCf<,ª“Ç,Ýo,³,êAf[fNfXfe[fVf#
f“,lfffBfXfN,ÉÄ“xŠi”[,³,ê,é%oß’ö,Å,·B

fXfe [f^fX fo [

fVfXfef€ , ìŒ» ÝfXfe [f^fX, â, » , ì¼, ìî•ñ, ð•\Ž! , , é, ½, ß, É%œ-Ê, ì%°•” , É•\
Ž! , ³, ê, éfo [, Å , •B

fffBfXfN, ìfRfs[] ,É, í[]A[ftf[]fbfs[] fffBfXfN, ìfRfs[] [fRf}f“fh, ðŽg—p, μ, Ä, -
, ³/₄, ³, ç[]BfCf“fXfgfCE[] [fVf#f“ ,É, ìfifŠfWfif< fffBfXfN, Å, í, È, fRfs[], ðŽg—p, μ, Ä, -
, ³/₄, ³, ç[]B

