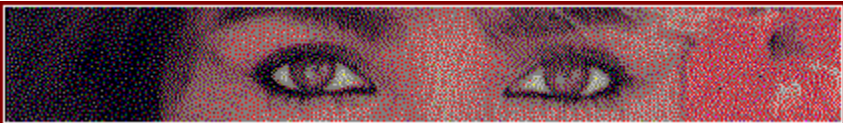


SELECT EXIT FROM THE FILE MENU TO QUIT



Please Read This Entire Document Before Proceeding

NEW FEATURES OF GRAPHIC WORKSHOP

**If you'd like to see this file again in the future, click on the What's New icon.
Complete documentation for Graphic Workshop can be found by double clicking on the GWS
Documentation icon.**

RELEASE 1.1W

This release of Graphic Workshop for Windows includes the following new features and updates:

TWAIN scanner support. This is something of a work in progress at present. It would have been part of the next major release, but we found a bug elsewhere in Graphic Workshop and a maintenance release was called for. Suffer not a bug to live. Please give the Acquire function a try if you have a TWAIN-compatible scanner and let us know if you encounter any problems with it. Note you must have a TWAIN driver for your scanner loaded to use this feature.

Progressive JPEG support.

An integral slide show function.

Optimized line handling code in this release has sped up just about everything Graphic Workshop does.

New functions in the button bar, including Add Thumbnails, Tag and Untag by wild cards, Up One Directory and Refresh Directory.

Tiled view option in the View mode.

Scaling options to maintain the aspect ratio of images being scaled to a fixed frame.

JPEG comments and details support.

Conversion to Windows wallpaper automatically configures your graphic as the current default wallpaper for your desktop.

XBM support.

Password protected PNG files encrypt your graphics so no one can look at them without your permission.

Faster PNG reading. Please consider converting your GIF files to PNG... it will save you some

disk space and help free the high seas of pirates.

Plus numerous other performance enhancements...

There have been numerous minor changes to this version of Graphic Workshop... as well as a few bug fixes. Please consult the GWS Documentation file for a more complete list of them.

Check out GIF Construction Set, by Alchemy Mindworks. It will create transparent, interlaced and animated GIF files for your web page. It's at our BBS, FTP site, WWW page and on CompuServe -- see GWS Documentation for complete information. As of this writing, registered users of Graphic Workshop for Windows will receive evaluation copies of GIF Construction Set and several other Alchemy Mindworks packages.

NOTE: We have changed the names of some of the DLL files that accompany the sixteen-bit version of Graphic Workshop. If you have an earlier sixteen-bit version of Graphic Workshop installed on your system, you can delete the old DLL files to free up some disk space. Specifically, you can delete THNL.DLL, STAT.DLL, SPIN.DLL, GIF.DLL and PNG.DLL. They have been replaced by THNL16.DLL, STAT16.DLL, SPIN16.DLL, GIF16.DLL and PNG16.DLL.

If you have previously installed one of the 32-bit beta releases of Graphic Workshop for Windows, note that the 32-bit release version loads into a different directory. You should delete the beta version from your hard drive to free up its space.

For scheduling reasons, the current release of Graphic Workshop for Windows 95 is being shipped with a Program Manager style installer -- our apologies to Windows purists. Also note that the Aldus import filter functions which support CGM and HPGL viewing are not active in the current 32-bit release.