

fwf<fv□ōˆø

,±,lfwf<fvftf@fCf<,íÈ%°,l□€-Ú,É,Â,ç,Ä,à-¾,μ,Ä,ç,Ü,·□BŠe□X□€-Ú,íŒ©,â,·,ç,æ,π,ÉfAfCfRf“,Ä•
 Ž,³,ê,Ä,ç,Ü,·□Bf}fEfX,ð,“Žg,ç,ì,ê□±,í,²Šó-],l□€-Ú,lfAfCfRf“,ðfNfŠfbfN,μ,Ä'l'ð,μ,Ä,-
 ,¾,³,ç□B,Ü,½□AfL□[f{□[fh,ð,“Žg,ç,ì,ê□±,í,f^fufL□[Ä,²Šó-],l□€-Ú,ð"½“,³,¹,Ä,©,ç%ü□sfL□[ð
 %Y,μ,Ä'l'ð,μ,Ä,,¾,³,ç□BfXfNfŠ□[f“,©,ç%B,ê,Ä,ç,é•ª,ífXfNf□□[f<fo□[ðŽg,Ä,Ä•Ž!,μ,Ä,,¾,³,ç□B
 f}fEfX,l%Ef{f^f“,ðfNfŠfbfN,·,é,ÆfvfŠf“f^□Y'èf_fCfAf□fOf{fbfNfX“à,l□€-Ú,É,Ä,ç
 ,Ä,lfwf<fvfXfNfŠ□[f“,ð'¼□Ü•Ž!,·,é,±,Æ,ª,Ä,«,Ü,·□B
 fwf<fv□€-Ú,ðˆ□ü,·,é,É,í□Afwf<fvftf@fCf<,l□uˆó□ü□v,ð'l'ð,μ,Ä,,¾,³,ç□B,±,lfXfNfŠ□[f“,É-
 ß,é,É,í□Afwf<fvfEfBf“fhfE□ä•“,l□ðˆøf{f^f“,ð'l'ð,μ,Ä,,¾,³,ç□B



Ž©“®



ŒÄ'èf,□[fh



lÆ±ÜÓ°Äb



pŽtfTfCf
Y



—pŽt



fLfff“fZf<



ffftfHf<fg



ˆó□ü•iZ¿



ˆó□ü,íŒü,«



ˆó□ü□óμ



Ä×lÞÜ'¼-
°Ä·Y,ß

Ž®



Ž®

Ž®^óüÝè,Å^óü,;é,ÆÅ,,îóü•iŽ,đ%4,é,±
,Æ,ª,Ä,«,Ü,·BŽ®^óüÝè,ÍA•¶ÍAfOf
%ftfBfbfNfXAZÊ^fCf[fW™,đ“Á'è,;é,±,Æ,È,-
A,;ç,ä,éŽi—p,î•¶‘,Ä,»,'à—
e,ÉÅ“K,î^óüüðœ,đŽ®@,Á'đ,µ,Ä^óü,µ,Ü,·B

Ž®@,ÍAfqf...[fœfbfgEfpfbfJ[fhŽĐ“ÆŽ®,ìColorSmart (TM) <Zp,ðl—
p,µ,Ä,;èAfXfNfŠ[f“ã,Ä•ÖW,µ,½•¶‘,ðx•”,É,í,½,è•ªÍ,µAfñ[ftfg[f“AZ”xÝ'èAfJf
%o[²@,ð,»,'î¶‘,ÉÄ,à“K,µ,½ðœ,ÉÝ'è,µ,Ü,·Bf,fmfNf^fvfŠf“f^ (HP DeskJet 300J/HP
DeskJet 500JfvfŠf“f^),Ä,ÍAÅ,,ìfœfCfXfP[f;
^óüœ%É,È,É,é,æ,ª,Éfn[ftfg[f“AZ”xÝ'è,ÍŽ®@“l,É'đ,ª,é,Ü,·B
%ŠúÝ'è,ÍŽ®@,É,È,Ä,Ä,ç,Ü,·BŽ®@,Í,Ü,Æ,ñ,Ç,î•¶^óü,É“K,µ,Ä,ç,Ü,·B
Ž®@,Ä,ÍAS,Ä,ìfìfvfVf‡f“,ìfvfŠf“f^fhf%oCfo,É,æ,èÝ'è,ª,é,é,ì,Ä•İXf{f^f“,ÍŽg—
p,Ä,«,Ü,¹,ñB

— • —

fLfff“fZf<

*f v f Š f “ f ^ □ Ÿ ’ è f _ f C f A f □ f O f { f b f N f X , ì f L f f f “ f Z f < f { f ^ f “ , ð f N f Š f b f N , · , é , Æ □ A □ Ÿ ’ è • ï □ X , ^až æ , è □ Á , ³ ,
è f _ f C f A f □ f O f { f b f N f X , ^a • Á , ¶ , ç , ê , Û , · □ B □ Ÿ ’ è , ð • ï □ X , μ , ½ □ Ū □ A □ u , n , j □ v , ð f N f Š f b f N , μ , ½ , Æ , « , ì , Ÿ , » , ì • ï
□ X , ^a — L Æ ø , Æ , È , è , Û , · □ B*

— • —

ffftfHf<fg

ffftfHf<fgf{f^f“,đfNfŠfbfN,;,é,Æ□AfvfŠf“f^□Ý’èf_fCfAf□fOf{fbfNfX,Ā•ĩ□X,³,ē,½□Ý’è,đ□H□
ê□o%×Žž,ì□Ý’è,É-ß,μ,Û,·□B

fvfŠf“f^□Ý’èf_fCfAf□fOf{fbfNfX

□Ý’è □o%×Žž□Ý’è

ˆó□ú□Ý’è: Ž©“®

ˆó□ú,ìŒü,«: □c

ˆó□ú•iŽç: fm□[f}f<

—pŽ†,lŽí—p: •□’ÉŽ†

—pŽ†fUfCfY: A4

fvfŠf“f^flfvfVf†f“f_fCfAf□fOf{fbfNfX

fvfŠf“f^flfvfVf†f“f_fCfAf□fOf{fbfNfX,ìŠfZfbfNfX,Ý’è□i”Z“x□Ý’è□Afn□[ftfg□[f“□AfJf
%□[²□@□j,í□A’đ,μ,½ˆó□ú□Ý’è,ì□Ý’è,É,É,è,Û,·□B□Ú□×,í□AflfvfVf†f“f_fCfAf□fOf{fbfNfX,ìfw
f<fv,đ,²——,¾,³,φ□B



—pžt

ˆÈ%°, ðŽQ □Æ, μ, Ä“K □Ø, È—pžt, ð‘l, ñ, Ä, ¾, ³, ϕ □B

—pžt

—p“r

•□’ÉŽ†

f{f“fhž† □A•jžÉ<@—
pžt □A, í, ª, «“™, lˆó □ü, É“K, μ, Ä, ϕ, Ü, · □B

’ □<L □FHP DeskJet 300J/HP DeskJet 500J
fvfšf“f^, Ä, l □A, ±, l—pžt f^fCfv, l, ÝŽg—p
%oÄ“^, ÄˆÈ%°, l—pžt, lžg—p, Ä, «, Ü, ‘, ñ □B

□ê—pOHPftfBf<f€
(μ°ÄÄb×²)

f, fmfNf □<y, ÑfJf
%o □[ˆó □ü, ª, Ä, «, Ü, · □BOHPftfBf<f€
, ð—p, ϕ
, Ä, l fvfœf{f“fe □[fvf±f“ž—
ç, l □ì □¬, É □Ä“K, Ä, · □B OHPftfBf<f€
, ð•j □—
†ˆó □ü, ·, é □ê □± □A<ð □—†—
Ü, ðˆó □ü □EäžÝ, lˆó □ü, ðž©“@“l, É‘†f, μfCf“fn
, ðš£†, ³, ‘, Ü, · □B4•ª, ©, ç14•ª, lšŠu, ð, , —, Ä □Aˆ
ó □ü, ð □ÄŠJ, μ, Ü, · □BS£†žžŠÖ, l □Af, fmfNf
□ □AfJf
%o □[□A“Z“x □Ý‘è □Afn □[ftfg □[f“, l □Ý‘è, É
%ož, ¶, Äž©“@“l, Éˆ² □@, ³, é, Ü, · □B

□ê—pOHPftfBf<f€
(îß°½b)

, Q—†ˆÈ □ä, l ftfBf<f€
, ðˆó □ü, ·, é □ê □± □A, P—
†, lˆó □ü, ª □l, í, é, ², Æ, É □Aˆó □ü, ª†f, μ, Ü, · □Bftf
Bf<f€
, ðfgfœfC, ©, çžæ, è □œ, «f_fCfAf □fOf{fb
fnfX, l □u, n, j □v, ðfnfšfbfN, μ, Ä □Aˆó □ü, ðˆ±
□s, μ, Ü, · □B

□ê—
pOEö‘öž†(μ°ÄÄb×²)

OEö‘öž†, É“ü, μ, f, fmfNf □ □AfJf
%o □[ˆó □ü, ª, Ä, «, Ü, · □B
OHPftfBf<f€ □ifl □[fgfhf%o fC □j, Æ“—
l, É □A•j □—†ˆó □ü, ·, é □ê □± □A<ð □—†—
Ü, ðˆó □ü □EäžÝ, lˆó □ü, ðž©“@“l, É‘†f, μfCf“fn
, ðš£†, ³, ‘, Ü, · □B4•ª, ©, ç14•ª, lšŠu, ð, , —, Ä □Aˆ
ó □ü, ð □ÄŠJ, μ, Ü, · □BS£†žžŠÖ, l □Af, fmfNf
□ □AfJf
%o □[□A“Z“x □Ý‘è □Afn □[ftfg □[f“, l □Ý‘è, É
%ož, ¶, Äž©“@“l, Éˆ² □@, ³, é, Ü, · □B

□ê—
pOEö‘öž†(îß°½b)

OHPftfBf<f€ □îß°½b □j, Æ“—l, É □A, Q—
†ˆÈ □ä, ðˆó □ü, ·, é □ê □± □A, P—
†, lˆó □ü, ª □l, í, é, ², Æ, É □Aˆó □ü, ª†f, μ, Ü, · □B—
pžt, ðfgfœfC, ©, çžæ, è □œ, «f_fCfAf □fOf{fb
fnfX, l □u, n, j □v, ðfnfšfbfN, μ, Ä □Aˆó □
ü, ðˆ± □s, μ, Ü, · □B

fJf
%o □[□•f, fmfNf □ □ê
—pžt

f, fmfNf □<y, ÑfJf%o □[ˆó □ü, ª, Ä, «, Ü, · □B

fJf%o □[□ê—pžt

, æ, è‘N, â, ©, ÈfJf%o □[ˆó □ü, ª, Ä, «, Ü, · (HP
DeskJet 560J/HP DeskJet
505Jfvfšf“f^, Ä, l, ÝŽg—p, Ä, «, Ü, · □B, ±, l—
pžt, l □Af, fmfNf □ˆó □ü, É, l“K, μ, Ü, ‘, ñ □B)

fvfšf“f^, Äžg—p, Ä, «, é—pžt, É, Ä, ϕ, Ä, l □Ü, μ, ϕ □à—¾, l fvfšf“f^, l f}fjf... fAf<ð, ²žQ □Æ, ¾, ³, ϕ □B



—pžtfTfCfY

□Ý'è,µ,½—pžt,É□†,Á,½—pžtfTfCfY,đ'l,ñ,Á,,¾,¾,ç□B

—pžt

fTfCfY

USfœf^□[

216mm x 279mm (8 1/2 in. x 11 in.)

A4

210 mm x 297 mm

B5

182mm x 257mm

,Í,a,«(□c'u,«)

100mm x 148mm (“K%ž□FHP DeskJet 560J/HP DeskJet 505J)

,Í,a,«(%oj'u,«)

148mm x 100mm (“K%ž□FHP DeskJet 300J)

'□L□FB5fTfCfY—pžt,Æ,Í,a,«,Í□A HP DeskJet 500JfvfŠf“f^,Á,Ížg—p,Á,«,Ü,1,ñ□B



«Ž†•ú-@

Ž©“®«Ž†

DeskJet 560J □ A DeskJet 505J <y,Ň DeskJet 500J fvfŠf“f^,Ä,Í □ A—
pŽ†,ð«Ž†ÄÚ²,ÉfZfbfg,μ,Û,· □ B DeskJet 300J fvfŠf“f^,Ä,Í □ AfV □ [fgftfB □ [f_,ðŽæ,è•t,¯,Ä—
pŽ†,ðfZfbfg,μ,Û,· □ B



œÀ'èf, □[fh

“K □ Ø, È ^ ó □ ü □ Ý ' è, ð % °, ©, ç ' l, ñ, Å, , ¾, ³, ç □ B



f, fmfNf □ fe
fL fXfg

Ž è Ž † “™, ì f, fmfNf □, ì • ¶ □ ì, ì ^ ó □ ü, È “K, μ, Å, ç
, Ü, · □ B

‘S, Ä, ì | f v f V f † f “, ì f v f Š f “ f ^ f h f
% ° f C f o, È, æ, è □ Ý ' è, ³, è, é, Ì, Å □ A f, fmfNf □ fe
fL fXfg, Ä, Ì □ X f { f ^ f “, Ì Ž g — p, Å, «, Ü, ' , ñ □ B



fJf % ° □ [fOf
% ° ft fBfbfN
fX

fOf % ° ft, â f ` f f □ [fg, ì, æ, æ
, È, Ì, Å, «, è, μ, ½ □ F, ì fOf
% ° ft fBfbfNfX, ì ^ ó □ ü, È “K, μ, Å, ç, Ü, · □ B (HP
DeskJet 560J/HP DeskJet
505J f v f Š f “ f ^, Ì, Ý)



fJf
% ° □ [Ž È □ ^

fXfLfffi, Å Ž æ, è □ ž, ñ, ¾ fCf □ □ [fW □ A Ž È □
^ fCf □ □ [fW, ì, æ, æ, È • ; Ž G, È fJf % ° □ [fOf
% ° ft fBfbfNfX, ì ^ ó □ ü, È “K, μ, Å, ç, Ü, · □ B (HP
DeskJet 560J □ AHP DeskJet 505J
f v f Š f “ f ^, Ì, Ý)



fOf œ fCfXf
P □ [f<

fOf % ° ft, â f ` f f □ [fg, ì, æ, æ
, È, Ì, Å, «, è, μ, ½ □ F, ì fOf
% ° ft fBfbfNfX, ì fOf œ fCfXfP □ [f < ^ ó □ ü, È “
K, μ, Å, ç, Ü, · □ B

fJf
% ° □ [ð fOf œ fCfXfP □ [f <, Å ^ ó □ ü, ;, é □ ê □ †, Ì
□ AfOf œ fCfXfP □ [f <, ð ' l' ð, μ, Ü, · □ B fOf œ f
CfXfP □ [f < f, □ [fh, Å, Ì fJf
% ° □ [í Š D □ F, Ì " Z ' W, Å • \ œ » , ³, è, Ü, · □ B

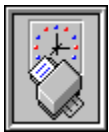


İÆ±ÜÓ°Äb



œÀ'èf, □[fh, í, Û, Æ, ñ, Ç, ì ó ü — p“r, É“K, μ, Ä, φ, Ü, ;, ° □A, æ, è □ ×, ©, ^ ó □ ú □ Ý'è, ð² □ □, μ, ½, φ □ ê □ ‡, İİÆ-
±ÜÓ°Äb, ð'ì ð, μ, Û, · □B

İÆ±ÜÓ°Äb, ì □ u · ì □ X... □ v f { f ^ f “, ð f N f Š f b f N, μ, Ä ” Z “ x □ Ý'è □ A f n □ [f t f g □ [f “ □ A f J f % □ [² □ □, ð □ Ý'è, μ, Ä, -
, ¾, ³, φ □ B f l f v f V f ‡ f “, É, Ä, φ, Ä, ì, æ, è □ Ü, μ, φ □ à -
¾, ì □ A f v f Š f “ f ^ f l f v f V f ‡ f “, ì f w f ‹ f v f { f ^ f “, ð f N f Š f b f N, μ, Ä, ² —, , ¾, ³, φ □ B
(f J f % □ [² □ □, ì □ AHP DeskJet 500J/HP DeskJet 300J f v f Š f “ f ^, Ä, Ì Ž g — p, Ä, «, Ü, ¹, ñ) □ B



^óü,ìŒü,«

^È%°,đŽQ□Æ,μ,Ä“K□Ø,È^óü,ìŒü,«,đ'l,ñ,Ä,¼,³,φ□B

^óü,ìŒü,«

“à—e

□c□if|□[fgfŒ□[fg□j

—

pŽ†,đ□c,É,μ,Ä^óüŒ<%É,đŒ©,é□é□†,ì□Ý'è□iŽèŽ†Œ`Ž®□
j□B,½,¼,μ□A□c□',«,ì□é□†,í—pŽ†,đ%oj,É,μ,ÄŒ©,Ü,·□B

%oj□if%of“fhfXfP□[fv□j

—pŽ†,đ%oj,É,μ,Ä^óüŒ<%É,đŒ©,é□é□†,ì□Ý'è□i·\
ŒvŽŽŒ`Ž®□j□B,½,¼,μ□A□c□',«,ì□é□†,í—
pŽ†,đ□c,É,μ,ÄŒ©,Ü,·□B



^óüižž

‘l’đ,Ä,«,é^óüižž,íÊ%°,ìÊ,è,Ä,·□B

fm□[f]f<

,Û,Æ,ñ,Ç,ì—pž†,Ä—ž‘«,ì,ç,-
^óüCE<%Ê,^a“%4,ç,è,Û,·□B

fxfXfg

fm□[f]f<,æ,è^óüfXfs□[fh,í‘½□—
Ž,ž,Û,;^a□AfxfXfg,Ê^óüCE<%Ê,^a“%4,ç,è,Û,·□
B

fhf%ftfg

fCf“fNžg—p—Ê,^a□,È,-
□A^óüfXfs□[fh,^a□Ä,à‘¬,çflfvfVf‡f“,Ä,·□B

HP DeskJet 560J/HP DeskJet

505JfvfŠf“f^,ÅfJf%□[fhfLf...

f□f“fg,lžž,μ□ü,è,đ,;é□ê□‡,í□A□•fvfŠf“fg
□E fJ□[fgfŠfbfW,¾,¯,đžg,π^óüf,□[fh,đ‘l’đ
,;é,±,Æ,đ,“Š©,ß,μ,Û,·□BfJf

%□[Ä^óü,;é,æ,è_

fO fCE fC fX fP□[f<^óü,μ,½,Û,π,^a‘¬,-

^óü,^a,Ä,«,Û,·□Bf,fmfNf□fefLfXfg,đ‘l’đ,;é,
Æ^óü,^a□Ä,à‘¬,,È,è,Û,·□B

%đ‘œ“x

%°•\,í□AfvfŠf“f^•Ê,É,æ,é%đ‘œ“x,đdpi,Ä•žž!,μ,Ä,ç,Û,·□B

		%đ‘œ“x(dpi)	
fvfŠf“f^	fm□[f]f<	fxfXfg	fhf%ftfg
HP DeskJet 560J	600x300 ÓÉ,Û 300x300 ¶x°	600x300 ÓÉ,Û 300x300 ¶x°	150x300 ÓÉ,Û150x300 ¶x°
HP DeskJet 505J	300x300 ÓÉ,Û 300x300 ¶x°	300x300 ÓÉ,Û 300x300 ¶x°	150x300 ÓÉ,Û 150x300 ¶x°
HP DeskJet 500J	300x300	300x300	150x300
HP DeskJet 300J	300x300	300x300	150x300



^óüóμ

^È%°,íóüóμf_fCfAf_fOf{fbfNfX,ìà-¾,Ä,·B

^óüf, [fh Æ»Ý'í'ð,³,ê,Ä,ç,é^óüüÝ'èf, [fh,Ä,·B

fy [fW"Ô† Æ»Ý^óü'†,ìfy [fW"Ô†,Ä,·B

f_fCfAf_fOf{fbfNfX"à,ì" _-Äfpf^ [f",íRf"fsf... [f^,aîñ,ð^—,μ,Ä,ç,é,±,Æ,ðŽ,μ,Ä,ç,Ü,·B



Ā'èf, [fh

“K, È, ò, ü, Ý, è, ð, ©, ç, ì, ñ, Å, ¼, ³, ç, B



f, fmfNf, fe
fLxfXfg

ŽèŽ†™, ìf, fmfNf, ì•¶, ì, ò, ü, É“K, μ, Å, ç, Ü, ·, B

‘S, Ä, Ì, Ìf, V, V, f, †f, ‘, Ìf, v, f, Šf, ‘f, ^, fhf
%o, f, C, fo, È, æ, è, ò, Ý, è, ³, é, é, Ì, Å, Af, f, mf, Nf, fe
fL, fX, fg, Å, Ì, Ì, Xf, {f, ^, f, ‘, Ì, Žg—p, Å, «, Ü, ‘, ñ, B



fJf%o, [fOf
%o, ft, fB, fb, fN, fX

fOf%o, ft, âf`ff, [fg, Ì, æ, ð
, È, Ì, Å, «, è, μ, ½, F, ÌfOf
%o, ft, fB, fb, fN, fX, Ì, ò, ü, É“K, μ, Å, ç, Ü, ·, B(HP
DeskJet 560J/HP DeskJet
505Jf, v, f, Šf, ‘f, ^, Ì, Ý)



fJf
%o, [ŽÈ, ^

fXfL, f, f, fi, Å, Žæ, è, ð, ž, ñ, ¼, f, C, f, [fW, Å, ŽÈ, ^
^f, C, f, [fW, Ì, æ, ð, È, ·; ŽG, È, f, J, f, %o, [fOf
%o, ft, fB, fb, fN, fX, Ì, ò, ü, É“K, μ, Å, ç, Ü, ·, B(HP
DeskJet 560J, AHP DeskJet 505J
f, v, f, Šf, ‘f, ^, Ì, Ý)



fOf, fC, fXf
P, [fç

fOf%o, ft, âf`ff, [fg, Ì, æ, ð
, È, Ì, Å, «, è, μ, ½, F, ÌfOf
%o, ft, fB, fb, fN, fX, ÌfOf, fC, fX, fP, [fç, ò, ü, É“
K, μ, Å, ç, Ü, ·, B

fJf
%o, [ðfOf, fC, fX, fP, [fç, Å, ò, ü, ·, é, ð, ê, †, Ì
[AfOf, fC, fX, fP, [fç, ð, Ì, ð, μ, Ü, ·, BfOf, fC, fX, fP, [fç, f, [fh, Å, Ìf, Jf
%o, [í, ŠD, F, Ì, Z, W, Å, ÇE», ³, é, Ü, ·, B



fgf%ofuf<fVf... [fefBf“fO

,±,±,Á,íê”É“l,È^óü,ì-â’è,Æ,»),ìí^•û-@,É,Á,ç,Ä,à-¾,µ,Û,·□B

’□<L: “—Ê,µ,Ä,ç,é-â’è,°%°<L,©,çœ©,Â,©,ç,È,ç□ê□‡,Í□AfvfŠf“f^,ìf}fjf...
fAf<,Û,½,ÍfCf“fXfg□[f<ffBfXfN“à,ìREADME.TXTftf@fCf<,ð,²——,¾,¾,ç□B,Û,½□A,“Žg,ç
,ìf\ftfgfEFfA,ìf}fjf...fAf<,à,²ZQ□Æ,,¾,¾,ç□B

^óü•iŽç,ì-â’è

fCf“fN,a,É,¶,ß
^óü“a”-ç
^óü,a,U,â,-é

fJf%□[“óü•iŽç,ì-â’è(HP DeskJet 560J/HP DeskJet 505JfvfŠf“f^)

-¾,é,ç”•aÆ^Ä,ç”•a,a,é
□•fCf“fN,ÆfJf%□[fCf“fN,a□-,’é
fJf%□[.a,¹,Ä,Y,ì,é
^óüfJf%□[.aŠú’Ö,µ,½fJf%□[.Á,Í,È,ç
^óüfJf%□[.ÆfXfNfŠ□[f“fJf%□[.a^Û,È,é

•¶□“óü,ì-â’è

ŠÖ^á,Á,½•ûœü,Á^óü,³,é,é
□s•□,â•¶ŽšŠu,a^fXfNfŠ□[f“,Æ^Û,È,Á,Ä^óü,³,é,é

,»,ì¼,ì-â’è

f□f,fŠ,a•s‘«,µ,Ä,ç,Ä^óü,Á,«,È,ç“™,ìœx□□f□fbfZ□[fW,a•Ž!,³,é,é
^óüfXfs□[fh,a^x,ç



-â'è □ F-¾, é, ç • "• a, Æ ^ Æ, ç • "• a, a, , é

œ ^ ö

fvfŠf" f^, l fRf" fsf
... □ [f^, a ff □ [f^"] —
, ;, é, æ, è, à ' ¬, ^ ó □ ü, ;, é, ±
, Æ, Å, « □ AfvfŠf" f^, a
ff □ [f^ Ò, ç, l Š Ò □ Afv
fŠf" fg □ E f J □ [fgfŠ
fbfW, a' â Ž ~, ;, é, ½, ß, É
fCf" fN, l, P, ç, a, Å, «, é
□ B

í □ ^

fxfXfg, ð ' l, ñ, Å ^ ó □ ü, ;, é □ B, » , é, Å, à ^ ó □ ü • i Ž ç, a
%oü ' P, ;, é, È, ç □ ê □ ‡, l □ A • ¶ □ , ð
Windows, l ftf @ fCf ç, É ^ ó □ ü, µ □ A, » , l ftf @ fCf
ç, ð DOS, l Copy fRf } f" fh, ð Ž g, Å, Å fvfŠf" f^, É ^ ó
□ ü, ;, é □ i DOS / V ç @, l, Y □ j □ B

1. f □ fCf " fOf ç □ [fvfEfBf" fhfE, ð Š J, « □ A
fRf " fgf □ □ [f ç fp l f ç, ð Š J, « □ AfvfŠf " f^
fAfCfRf", ð fNfŠfbfN, ;, é □ B
2. □ Ú ±, ð fNfŠfbfN, ;, é □ B
3. f l
□ [fgfŠfXfgf {fbfNfX, l ftf @ fCf ç, ð fNfŠ
fbfN, µ, Å fvfŠf" fg ftf @ fCf ç, ð ì □ ¬, ;, é □
B OK, ð fNfŠfbfN, ;, é □ B
4.
fvfŠf" f^ f _ fCf Af □ fOf {fbfNfX, ð • Å, ¶, é
□ B
5.
fAfvfŠfP □ [Vf ‡ f", Å fvfŠf" f^ □ Y' è, ð ' l, Ò
□ B
6.
fvfŠf" f^ f _ fCf Af □ fOf {fbfNfX, l OK, ð f
NfŠfbfN, µ ftf @ fCf ç —
¼, Æ fvfŠf" fg □ è □ Š, ð ftf @ fCf ç, f _ fCf Af
□ fOf {fbfNfX, É f^ fCf v, ;, é □ B (— á □ FC: \
REPORTS \ QUARTER1)
7. Windows, ð □ l — 1, µ □ ADOS fRf } f" fh, É —
ß, é □ B (— á □ FC: \)
8. ftf @ fCf ç, a " ü, Å, Å, ç
, é f f B f ç f N f g f Š, É • i □ X, ;, é □ B (— á □ FC: \
REPORTS)
9. COPY \B QUARTER1 port
, Æ f^ fCf v, ;, é □ B "Port", l " • a, l fvfŠf" f^, ð □ Ú
' ±, µ, Å, ç, é f l □ [fg, ð f^ fCf v, ;, é □ B (—
á □ FLPT1)



-â'è□F□•fCf“fN,ÆfJf%□□[fCf“fN,a□¬,´,é
(HP DeskJet 560J/HP DeskJet 505JfvfŠf“f^,ì,Ý)

œ^^ö

fvfŠf“f^□Ý'è,É-
â'è,a, ,é□B

í□^

%°fXfefbfv,ì□‡,É□Ý'è,ð•ì,!,Ä^ó□ü,;é□B

1.

fvfŠf“f^,ì□ufwfbfh^Ê'u'²□@□v,ð□s,□
BfvfŠf“f^,ì}fj...fAf<,ðŽQ□Æ,μ,Ä,-
,³/₄,³,ϕ□B

2. fxXfg□Ý'è,É,;é□B

3. fJf%□[ŽÊ□^□Ý'è,É,;é□B

4. □,•iŽ¿,È—pŽ†,ðŽg,□B



-â'è□F^ó□üfJf%□[,^aŠú'Ò,μ,½fJf%□[,^A,í,È,ç
(HP DeskJet 560J/HP DeskJet 505JfvfŠf" f^,ì,Ý)

œ^ö

"Z"x□Ý'è,ð•ï□X,μ,½,½,ß,
É □F'Š,^a•ì,í,Á,½□B

'l'ð,³,ê,Ä,ç,éfJf
%□[²□@,^a"K,³,È,ç□B.

í□^

fvfŠf" f^□Ý'èf_fCfAf□fOf{fbfNfX,ÅŽ
@"®^ó□ü□Ý'è,ð'ì,Ô,©□Af|fvfVf†f" f_fCf
Af□fOf{fbfNfX,Å"Z"x□Ý'è,ð'²□@,·,é□B

'¼,ìfJf%□[²□@,É□Ý'è,·,é□B



-â'è□F^ó□üfJf%□[,ÆfXfNfŠ□[f“fJf%□[,^ù,È,é
(HP DeskJet 560J/HP DeskJet 505JfvfŠf“f^)

œ'ö

fJf%□[²□@,ð'²□@,;é•K—v,a,
,é□B

%æ—

Ê□ã,ì□F,ažÀ□Ù,ì•η□',ì□F,Æ^
Ù,È,é,½,ß□B

í□^

fvfŠf“f^□Y'èf_fCfAf□fOf{fbfN
fX,ÅŽ@“@^ó□ü□Y'è,ð'ì,Ô,©□Aflfvf
Vf‡f“f_fCfAf□fOf{fbfNfX,Åf.fj
f^□[fJf%□[ð'ì,Ô□B

,o,bxy,Ñf,fjff^□[,ì□Å'ã•ž!%Å”\
□F□”,a16□F,Ü,Ä,ì□ê□‡□A256□F^È
□ã•ž!%Å”\,ÉfvfXfef€
,ÉfAfbfvfOfœ□[fh,;é•K—v,a,,é,©,
à,μ,ê,Ü,¹,ñ□B



-â'è F s • â • ŽšŠÔŠu, a f X f N f Š [f", Æ ù, È, Á, Ä ö ü, ß, ê, é

œ'ö

• ¶ ' , Å Ž g — p, ß, ê, Ä, ç
, é f t f H f " f g, É, æ, é B

í ^

MS-¾'© AMS f S f V f b f N A Times
New Roman™, l f X f P [f
%o f u f < f t f H f " f g, ð Ž g — p, : , é B



-â'è FŠÖ^á,Á,½Œü,«,A^ó ü,³,ê,é

Œ'ö

fvfŠf" f^ Y'èf_fCfAf
fOf{fbfNfX,ì Y'è,ªfAf
vfŠfP[fVf‡f",ì Y'è,Æ
^U,É,éB

í^

fvfŠf" f^ Y'èf_fCfAf fOf{fbfNfX,ì
óü,ì•üŒü,Æ",ŋ,É,È,é,æ,ª
,ÉfAfvfŠfP[fVf‡f",Á,à Y'è,·éBfAf
vfŠfP[fVf‡f",ì Y'è,ìfvfŠf" f^ Y'èf_f
CfAf fOf{fbfNfX,ì Y'è,É—
Dæ,·éB

'<L FHP DeskJet 300J,Á,í,ª,«,ð^ó ü,·,éê± AfAfvfŠfP[fVf‡f",É,æ,Á,Ä,í
^óü,ìŒü,«,ªt,É,é,±,Æ,ª, è,Ü,·B,í,ª,«,ð^ó ü,·,éO,É,Ü,ŽŽ,μü,è,ð,³,ê,é,±,Æ,ð,Š©,B,μ,Ü,·B



-â'è□F^ó□ü,a"-,ç

œ'ö

flfvfVf‡f" f_CfAf□fO
f{fbfNfX,l"Z"x□Y'è,a-
¾,é,:-,é□B

fhf%oftfg,a'l'ð,³,è,Ä,ç,é□B

fvfŠf"fg□EfJ□[fgfŠfbf
W,l□Ú□G*s—Ç□B

í□^

fvfŠf" f^□Y'è f_CfAf□fOf{fbfNfX,
ÅZ@"®^ó□ú□Y'è,ð'l,Ô□B"Z"x□Y'èfœfo
□[,ð%oE,É"®,©,μ,Ä^Ä,,,:é□B

fvfŠf" f^□Y'è f_CfAf□fOf{fbfNfX,
Åfm□[f}fç,ð'l,Ô□B

fvfŠf"fg□EfJ□[fgfŠfbfW,ð'
□œ,:é,©□A,Ü,½,l□V,μ,ç
,à,l,ÆœðŠ,:é□B□Ú□x,lfvfŠf" f^,l}fj
...fAfç,ð,²ŽQ□Æ,,¾,³,ç□B



-â'è□F^ó□ü,^aÚ,â,̄,é

œ'ö

flfvfVf‡f“f_fCfAf□f
Of{fbfNfX,l”Z“x□Y'è,^a
Ã,;,̄,é□B

—pŽ†,^aó□ü•iŽč,É
%œ<č,μ,Ä,ç,é□B

□³,μ,ç^óŽš—
Ê,É^ó□ü,³ê,Ä,ç,Ê,ç□B

í□^

fvfŠf“f^□Y'èf_fCfAf□fOf{fbfNfX,Ä
Ž@“@^ó□ü□Y'è,đ'l,Ó□B”Z“x□Y'èfœfo□[,
đ□¶,É“@,©,μ,Ä-³/₄,é,,̄,é□B

^á,πf^fCfv,l—pŽ†,Ä^ó□ü,̄,é□B—
pŽ†,É,Ä,ç,Ä,í□AfvfŠf“f^,lf}fjf...
fAf<đ,²ŽQ□Æ,,³/₄,³,ç□B

—pŽ†,l^ó□ü-Ê,^a□³,μ,ç,©Šm”F,̄,é□B



-â'è □ FfCf“fN,a,É,¶,ñ,¾,è □ A—pŽt,a,μ,í,É,È,é

œ'ö

fCf“fN,ì—
É,a,½,;,¬,é □ B

•s“K“—,É—
pŽt,aŽg,í,ê,Ä,φ,é □ B

í □ ^

fvfŠf“f^ □ Ý'èf_fCfAf □ fOf{fbfNfX,ÁŽ©
“@^ó □ ú □ Ý'è,ð'l,Ô □ B

flfvfVf†f“f_fCfAf □ fOf{fbfNfX,ì”Z“x □
Ý'èfœfo □ [,ð □ ¶,É“@,©,μ,ÁfCf“fNŽg—p—
É,ðœ,.,ç,· □ B

^á,πf^fCfv,ì—pŽt,Á^ó □ ü,·,é □ B—pŽt,É,Â,φ
,Ä,í □ AfvfŠf“f^,ìf}fjf...fAf<,ð,²ŽQ □ Æ,-
,¾,³,φ □ B



-â'è Ff f, fŠ, a•s'«, μ, Ä, ç, Ä^ó ü, Ä, «, È, ç“™, ìœx f fbfZ fW, a•Ž! , s, ê, é

œ~ö

í^

fVfXfef€f f, fŠ, a•
s'«, μ, Ä, ç, é B

ŠJ, ç, Ä, ç, é'¼, ìfAfvfŠfP [fVf†f“, ð•Â, ¶, é B
'S, Ä, ìfAfvfŠfP [fVf†f“, ÆWindows, ð |—
1, , é BWindows, ð Ä<N“@, μ, Ä AŽg—
p, μ, ½, çfAfvfŠfP [fVf†f“, ¾, ¯, ðŠJ, B
XMSf f, fŠ, ìŠ, , ð, ð, â, . BPC, ìfVfXfef€
Ý'è• Ī X, È, Ä, ç, Ä, Ī AMS°DOS(TM), ìf}fjf...
fAfç, ð, ²ŽQ Æ, , ¾, ¾, ç B



-â'è□F^ó□üfXfs□[fh, a'x,ç

œ~ö

fVfXfef€f□f,fš,a•
s'«,μ,Ä,ç,é□B

fxfXfg,a'l'ð,³,ê,Ä,ç
,é□B

HP□ê—
pOHPftfBf<f€
,Ü,½,Í□AHP□ê—
pœð'òž†,a'l'ð,³,ê,Ä,ç
,é□B

í□^

šJ,ç,Ä,ç,é'¼,lfAfvfšfP□[fVf†f“,ð•Ä,¶,é□B
'S,Ä,lfAfvfšfP□[fVf†f“,ÆWindows,ð□I—
,,é□BWindows,ð□Ä<N“@,μ,Ä□Ažg—
p,μ,½,çfAfvfšfP□[fVf†f“,¾,¯,ðšJ,□B
XMSf□f,fš,ìš,,□†,ð'□,â,·□BPC,lfVfXfef€□
Ý'è•l□X,É,Ä,ç,Ä,Í□AMS°DOS(TM),lf}fjf...
fAfc,ð,²žQ□Æ,,¾,³,ç□B

fm□[f}f<ð'l'ð,·,é□B

OHPftfBf<f€□ACEð'òž†,ð^ó□ü,·,é□ê□†,Í□A
fvfšf“f^fhf
%ofCfo,Í^ó□üf,□[fh,É□†,í,¹,Äž©“@“l,ÉfCf“f
Nš£†'Ò,¿žžšÔ,ð<ð□”-†-Ü,Ì^ó□ü□I—
¹œä,²,Æ,Éžæ,è,Ü,·□B



fvfŠf“f^fhf%o fCfo

fvfŠf“f^,ð□§CEä,μ□AŽg—p,μ,Ä,ç,é fAfvfŠfP□[fVf‡f“,ðfvfŠf“f^,}◀@”\
,É fAfNfZfX,μ,Ü; □BfvfŠf“f^fhf%o fCfo,í □AWindows fAfvfŠfP□[fVf‡f“,É fvfŠf“f^◀@”\
□AfCf“f^□[fifFfCfX□AftfHf“fg,É,Ä,ç,Ä,ì □d—v,È □î•ñ,ð“`B,μ,Ü; □B

—pž†,ìĀü,«

□c□F—pž†,đ□c,É,μ,Ä^ó□üĀĒ<%Ē,đĀĀ,é□ê□†,ì□Ý'è□ižēž†ĀĒ`Ž®□j□B,½,¾,μ□A□c□',«,ì□ê□†,í—
pž†,đ%□j,É,μ,ÄĀĀ,Ü,·□B

%□j□F—pž†,đ%□j,É,μ,Ä^ó□üĀĒ<%Ē,đĀĀ,é□ê□†,ì□Ý'è□i\ĀĒvžžĀĒ`Ž®□j□B,½,¾,μ□A□c□',«,ì□ê□†,í—
pž†,đ□c,É,μ,ÄĀĀ,Ü,·□B

.í^a,«,ì'ó□ü,ìĀü,«

HP DeskJet 505J/HP DeskJet 560Jfvfšf“f^,Á,í^a,«,đ^ó□ü,·,é□ê□†,í□A^ó□ü,ìĀü,«,ÉšÖĀĒW,É,-
,í^a,«,í□c'u,«,ÉfZfbfg,μ□A^óžš—Ē,đ%°°,É,μ,Ü,·□B,½,¾,μ□AHP DeskJet 300Jfvfšf“f^,Á,í%
í'u,«,É,í^a,«,đfZfbfg,μ□A^óžš—Ē,đ□ā,É,μ,Ü,·□B

'□<L□FHP DeskJet 300J,Á,í^a,«,đ^ó□ü,·,é□ê□†□AfAfvfšfP□[fvf†f“É,æ,Á,Ä,í^ó□ü,ìĀü,«,^at,É,È,é,±
,Æ,^a,è,Ü,·□B,í^a,«,đ^ó□ü,·,é'O,É,Ü,žž,μ□ü,è,đ,³é,é,±,Æ,đ,š©,B,μ,Ü,·□B

fOfœfCfXfP [f<

fJf%o [Ü,½,ÍŽÊ^™,ì”Z'W,ì, ,éfCf [fW,đ64ŠK'2,©,ç256ŠK'2,ìŠD F,Á•œ»,μ,Ü,· B

dpi

,Pfcf“f`“-½,è,ìfcf“fNfhfbfg”□i%o;~□c□j□B—á,í600x300 dpi,Æ,í□A,Pfcf“f`“-½,è□Á‘â
%o;600fhfbfg,~□c300fhfbfg,đ^ó□ü,;é,±,Æ,ª%Á”\,Á,·□B

INIftf@fCf<,i·i□X

DeskJet J- fVfŠ□[fYfvfŠf“f^fhf%o fCfo,ìINIftf@fCf<·i□Xfvf□fOf%of€
,í□AINIftf@fCf<“à,ì□Y’è,ð·i□X,μ,Û,·□B’É□í,í,±,ì□Y’è,ð·i□X,·,é·K—v,í, ,è,Û,¹,ñ□B,±,ìfvf□fOf%of€
,ðŽÀ□s,·,é,É,í□Aftf@fCf<□A—¼’O,ðŽw’è,μ,ÄŽÀ□s□A HPACNFIG.EXE,ð’i’ð,μ,Ä,,¾,¾,¾□B
OK(O)f{f^f“ ,ð’i’ð,·,é,Æ□Afvf□fOf%of€,í`fFfbfNf{fbfNfX,Ä□s,Ä,½·i□X“à—e,É,æ,è□A“K□Ø,É
INIftf@fCf<,ð□X□V,μ,Û,·□Bfvf□fOf%of€
,í□AOKf{f^f“ ,ð’i’ð,μ,½□Eä,É□A□uWindows,ð□Ä<N“@,·,é□v,Û,½,í□A□uCEp’±□v,ì,Ç,ç,ç,©,ì’i’ð,ð’£,μ,Û,·□B,±
,±,Ä,í□A·i□X“à—e,ð“K—p,¾,¹,é,½,β□AWindows ,ð□Ä<N“@,μ,Ä,,¾,¾,¾□B

ˆóüúóúμf_fCfAf□fOf{fbfNfX,ð·Ž!,μ,È,ç
,±,ìfvfVf±f“,í□AfvfŠf“f^fhf%o fCfo,¾fvfŠf“f^□ADeskJetXfv□[f
%□[Û,½,í□AfvfŠf“fgf}fì□[fWff,É□i·ñ,ð—□M,μ,Ä,ç,é,Æ,« ,É□Aˆóüúóúμf_fCfAf□fOf{fbfNfX ,ð·
Ž!,μ,È,ç,æ,π,É,μ,Û,·□B

,g,ofJf%□[,ðŽg—p,μ,È,ç
,±,ìfvfVf±f“,í□Af ,fmfNf□fCf□□[fW,ì´ó□ü,ð´³Šm,ÉŽÀ□s,μ,Ä,ç,é,Æ,« ,É—â’è“_ ,”-
□¶,μ,½□è□±,É’i’ð,μ,Ä,,¾,¾,¾□B,±,ìfvfVf±f“,ð’i’ð,μ,Ä,à—â’è“_ ,”%ðœ^ ,¾,É,ç□è□±,í□A·K, ,’i’ð,ð
%ð□œ,μ,Ä,,¾,¾,¾□B,±,ìfvfVf±f“,ð’i’ð,μ,½,Û,Û,É,·,é,Æ□A¼,ìfAfvfŠfP□[fvf±f“,Ä´ó□ü,ð□s,π□Û,É—
â’è, ”□¶,·,é□è□±, ,è,Û,·□B

DeskJetXfv□[f%□[,ðŽg—p,μ,È,ç
,±,ìfvfVf±f“,í□ADeskJetXfv□[f%□[,ìŽg—
p,ð<ÖŽ~,μ,Û,·□BWindows·t@,ìfvfŠf“fgf}fì□[fWff,ðŽg—p,μ,½,ç□è□±,í□ADeskJetXfv□[f%□[,ìŽg
—p,ð<ÖŽ~,·,é·K—v, ,è,Û,·□B

,»,ì¼,ì□Y’è
,»,ì¼,ì□Y’è,í□AfCf“fXfg□[f<—pffBfXfN,É, ,éREADME.TXT ftf@fCf<,ðŽQ□Æ,μ,Ä,,¾,¾,¾□B

INIftf@fCf<,ì□Y’è,ð·i□X,μ,È,ç,AINIftf@fCf<·i□Xfvf□fOf%of€,ð□I—
¹,·,é,É,í□A□uLfff“fZf<□v{f^f“,ðfNfŠfbfN,μ,Û,·□B

‘S,Ä,ì□Y’è,ð□o%×Žž□Y’è,É,·,é,É,í□A□uŠfZfbfg□v{f^f“,ðfNfŠfbfN,μ,Û,·□B



fwf<fv□ō`ø

,±,lfwf<fvftf@fCf<,íÈ%°ì□€-Ú,É,Â,ç,Ä□à-¾,μ,Ä,ç,Ü,·□BfXfNfŠ□[f“,©,ç%°B,ê,Ä,ç
.é”•ª,ífXfNf□□[f<fo□[,ðŽg,Á,Ä•Ž|,μ,Ä,,¾,ª,ç□BfvfŠf“f^f,ff<,É,æ,Á,Ä,Í□AfvfŠf“f^fhf
%°fCfo,ík@”\,ª□§œÄ,ª,ê,Ü,·□B□§œÄŽ-□€,Í’□<L,Æ,μ,ÄŠefwf<fv□€-Ú,í†,Á□à-¾,μ,Ä,ç,Ü,·□B
fwf<fv□€-Ú,ð´ó□ü,·,é,É,Í□Afwf<fvftf@fCf<,ì□uˆó□ü□v,ð‘ð,μ,Ä,,¾,ª,ç□B

fwf<fv□€-Ú

fvfŠf“fg□EfJ□[fgfŠfbfW
”Z“x□Y’è
fJf%°□[²□@
fn□[ftfg□[f“



fJf%o□[’²□®

,±,±,Á,ÍfJf%o□[’ó□ü,É,Á,ç,Ä,Ì,Ý□à-¾,μ,Ü,·□B

f,fjff^□[fJf%o□[

•iŽG,ÈfOf%oftfBfbfNfX“™,ì´ó□ü,Á,í□A%oæ-Ê□ā,ì□F,Æ´ó□ü,³,è,é□F,ªf}fbf`,μ,Ä,ç,é,±,Æ,ª□d—
v,Á,·□B,μ,©,μ□A%oæ-Ê□ā,ÁŠú‘Ó,³,è,½□F,ª´ó□ü,³,è,é,Æ,ÍCEÁ,è,Û,¹,ñ□B—á,ì,í□A□u%oæ—
Ê□ā,ì”□v,ðCEμ-š,É□ACE»,μ,Á´ó□ü,μ,½□è□‡□AZÁ□Ü,É,í□u‘W,çfuf<□[fOfCEfC□v,É,È,è,Ü,·□B

f,fjff^□[fJf%o□[,ð‘l’ð,·,é,Æ□A‘N-¾,ÈfJf%o□[,Áf,fjff^□[,É□Á,à<ß,ç□F□Ê,ð´ó□ü,·,é,±,Æ,ª,Á,«,Ü,·□B
Žg—p—p“r

- o •iŽG,ÈfOf%oftfBfbfNfX□AfXfLfffi,ÁŽæ,è□ž,ñ,¾fCf□□[fW,âžÊ□^□A•iŽG,ÈfRf“fsf...
□[f^fA□[fg“™,ì´ó□ü,É“K,μ,Ä,ç,Ü,·□B

’□<L□F%oæ-Ê,ì\CE»%oÁ”\□F□”,í,“Žg,ç,ì,o,b□Af,fjff^□[,É,æ,è´Ü,È,è,Ü,·□B□Á‘â•\
CE»□F,ª16□F,Ü,Á,ì,o,b,Á,í□Af,fjff^□[fJf%o□[,ðŽg,Á,½□è□‡%oæ-Ê□F,ÆfvfŠf“fgfAfefg,Á,í\
CE»%oÁ”\
□F□”,ª´Ü,È,é,½,ß□AfAfvfŠfP□[fVf‡f“,É,æ,Á,Ä,Íf,fjff^□[fCf□□[fW,Æ´Ü,È,Á,Á´ó□ü,³,è,é□è□
‡,ª,·,è,Ü,·□B

‘N-¾fJf%o□[

,±,ì□Ý‘è,í□AfVf“fvf<,ÈfOf%oftfBfbfNfX,â,í,Á,«,è,μ,½□F,ì•ü,ªCE©,â,·,çf`ff□[fg,âfOf
%oft“™,ì´ó□ü,É“K,μ,Ä,ç,Ü,·□B

Žg—p—p“r

- o fVf“fvf<,Á‘N-¾,ÈfJf%o□[fOf%oft,âf`ff□[fg“™,ì´ó□ü□B
- o Šî-{}W□F (□•□A”□A□Ô□A□Â□A—Í□AfVfAf“□AfCfGf□□[□Af}f[f“f^),ðŽg—
p,·,éfAfvfŠfP□[fVf‡f“,ì´ó□ü□B



fn [ftfg] [f“

fn [ftfg] [f“ , í □ A □ u f C f “ f N — ± Ž q , l ” z — ñ □ v , ð , R Ž í — p , ì • ù — @ , Ā f J f
 % □ [c y , Ñ f O f Ā f C f X f P □ [f < , ì □ F □ Ē □ A ” Z ’ W , ð Ž © ’ R , Ē < ß , ϕ Š ’ Š o , Ā • \ Ā » , μ , Û , • □ BHP DeskJet
 FE ° Series f v f Š f “ f ^ f h f % □ f C f o , Ē , í □ A f p f ^ □ [f “ □ A Š g Ž Ů □ A f N f % □ f X f ^ , R Ž í — p , ì f n □ [f t f g □ [f “ • \ Ā » • ù —
 @ , ^ , è , Û , • □ B

Ž í — p	• ù — @	Ž g — p — p “ r	ˆ ó □ ü “ x
f p f ^ □ [f “	f C f “ f N , ð < ì “ T M ” z ’ u □ B Š ð % □ ½ Š w “ l — l , ì ’ g , Ý □ † , í , 1 , Ā f n □ [f t f g □ [f “ , ð • N f Š f b f v f A □ [f g “ T M , Ē “ K , μ , \ Ā » , μ , Û , • □ B	f J f % □ [f e f L f X f g □ A f O f □ , ‘ ¬ % □ f t □ A f t f Š □ [f n f “ f h □ A f Û , • □ B	
Š g Ž Ů	f C f “ f N Š g Ž Ů — @ □ B f J f % □ [□ A f O f Ā f C f X f P □ [f < , ì ” % □ f t f B f b f N f X □ A Ž Ē □ ^ f C Z ’ W , Ē □ † , í , 1 , Ā f C f “ f N , ð Š g Ž Ů f □ □ [f W □ A f X f L f f f i , Ā Ž æ , 3 , 1 Ž © ’ R , Ē “ Z ’ W , ð • \ Ā » , μ , Û , • □ B	• ì Ž G , Ē f O f % □ f t f B f b f N f X □ A Ž Ē □ ^ f C f □ □ [f W □ A f X f L f f f i , Ā Ž æ , è □ ž , ñ , 3 / 4 f C f □ □ [f W “ T M , Ē “ K , μ , Û , • □ B	† Š Ő
f N f % □ f X f ^	f C f “ f N □ W □ † — @ □ B f J f % □ [□ A f O f Ā f C f X f P □ [f < , ì ” • K — v , Ā , ; , é • ¶ □ [, \ Ā — Z ’ W , Ē “ ä — á , μ , Ā □ A f C f “ f N f h f b f g , ì á , « , 3 , ð • Ĭ , ð , Û , • □ B	Ž Ē □ ^ f C f □ □ [f W □ A • ì Ž Ē , ð † Š Ő • K — v , Ā , ; , é • ¶ □ [, \ Ā — { ˆ ó □ ü “ T M , Ē “ K , μ , Û , • □ B	

’ □ < L : f p f ^ □ [f “ — @ , Ā f J f % □ [ˆ ó □ ü , ; , é □ ê □ † □ A □ • , í □ ¬ □ † □ • , Ā , Ē , è Š í —
 { R □ F □ i f v f A f “ □ A f C f G f □ □ [□ A f } f [f “ f ^ □ j , ð □ † □ ¬ , μ , Ā • \
 Ā » , μ , Û , • □ B □ ¬ □ † □ • , ð ˆ ó □ ü , μ , ½ □ Ů , Ē □ • , a —
 î , a , © , Ā , Ā Ā © , ! , é • ê □ † , í □ A ˆ ó □ ü • ì Ž ě , ð □ u □ , • ì Ē □ v , Ē , μ , ĀHP □ ê — p Ž † , ð Ž g — p , ; , é , Ā
 % □ Ů ‘ P , 3 , è , Û , • □ B



"Z"x□Ý'è

"Z"x□Ý'è,íó□ü,ì-¾^Ã,ð'²□@,μ,Ü,·□B-¾,é,,·,é,É,ífœfo□[,ð□¶,É^Ú"@,μ□A^Ã,,·,é,É,í%E,É^Ú"@,μ,Ü,·□B

o "Z"x□Ý'è,ð^Ã,,·,é,ÆfCf" fN,ìŽg—p—Ê,ª½,,È,è,Ü,·□B

o fJf%□[ó□ü,Á"Z"x□Ý'è,ð'²□@,·,é,Æ□F'S,ª,í,í,é,±,Æ,ª,·,è,Ü,·□B



fvfŠf“fg□EfJ□[fgfŠfbfW

fJf%□[

,±,ì□Ý'è,Á,Í□A fJf

%□[fvfŠf“fg□EfJ□[fgfŠfbfW,ǒŽg,Á,Ä•¶□‘,ǒó□ü,μ,Û,·□Bf, fmfNf□fe fL fXfg,â•¶□‘,ì†,ìfOf

%□ftfBfbfNfX,í□-□±□•,A^ó□ü,μ,Û,·□B

f, fmfNf□

,±,ì□Ý'è,Á,Í□A□•fvfŠf“fg□EfJ□[fgfŠfbfW,ǒŽg,Á,Ä•¶□‘,ǒó□ü,μ,Û,·□BfJf%□[fOf

%□ftfBfbfNfX,í f, fmfNf□, ,é,ç,ÍŠD□F,ì”Z”W,Á^ó□ü,μ,Û,·□B



□FŠ

□F,lfOf%ff□[fVf‡f“□B—á,î□Afsf“fN,í□Ô,ì□FŠ,É®,μ,Û,·□B

fpf^□f“

fCf“fN,đ.ĩ“™”z’u,μ□AŠđ%½Šw“l—l,ì’g,Y□‡,í,1,Àfn□[ftfg□[f“,đ•\œ»„μ,Û,·□B

□@ŠgŽU

fJf%□[□AfOfŒfCfXfP□[f<,l)Z'W,É□‡,í,1,Ä□AfCf“fN,đŠgŽU,³,1Ž©'R,È”Z'W,Āfn□[ftfg□[f“,đ•\Œ»„μ,Ů,□B

fNf%ofXf^

fCf“fN,ð□W□‡,³,¹□AfJf

%o□[□AfOfœfCfXfP□[f<,l”Z’W,É□‡,í,¹,ÄfCf“fNfhfbfg,l’â,«,³,ð•l,|,Äfn□[ftfg□[f“;ð•\œ»,μ,Ü,·□B

fn [ftfg [f“ (ffBfUfŠf“fo,Æ,àœÄ,î,ê,é)

f v f Š f “ f g □ E f J □ [f g f Š f b f W , © , ç • ¬ □ o , ; , é f C f “ f N , ì — ± , ì ‘ g , Ý □ ‡ , i , ‘ , É , æ , è f O f œ f C f X f P □ [f ‹ , â f t f ‹ f J f
% □ [, ð • \œ » , μ , Û , · □ BHP DeskJet FE ° Series f v f Š f “ f ^ f h f % □ f C f o , Ä , í □ A f p f ^ □ [f “ — @ □ A f N f % □ f X f ^ —
@ □ A Š g Ž U — @ , ð Ž g — p , μ , Ä , ç , Û , · □ B

□¬□‡□•

fJf%o□[ˆó□ü,Á,Í□A□•,Í,RCE'□F□ifVfAf“□AfCfGf□□[□Af}f[f“f^□j,Á•\CE»,³,ê,Ü,·□B,±
,l,R□F,δ□d,É,Áˆó□ü,;é,Æ□¬□‡□•,É,È,è,Ü,·□B

fXfv [f% [óμ

fXfv [f% [óμ f_CfAf fOf{fbfNfX, íACE» ÝfXfv [f'†, ìfy [fW" Ô†, ðŽ!, μ, Ü, ·B



f_CfAf fOf{fbfNfX"à, ì" _Àfpf^ [f", íAfRf" fsf... [f^, aî•ñ, ð^—, μ, Ä, ç, é, ±, Æ, ðŽ!, μ, Ä, ç, Ü, ·B



^óüóμ

^óüóμf_fCfAf_fOf{fbfNfX,ÍACE»Ý^óü't,ì•¶'É,Â,ç,Ä,ìî•ñ,ð•Ž!,μ,Û,·B
fhf%_fCfoÝ'è

CE»Ý^óü't,ì•¶'ìóüÝ'è,Ä,·B

^óüóμ

□E—pŽ†fTfCfY,É"ä—á,μ,½frfbfgf}fbfv,^a•Ž!,^s,è,Û,·B

□E^óüCEo%ß,ÍAfrfbfgf}fbfv□ã,ìfo□[,ì',^sÄŠm"F,·,é,±,Æ,^a,Ä,«,Û,·B

□Efy□[fW"Ô†,ÍAfrfbfgf}fbfv□ã,ìftfbf^□[É'u,É•Ž!,^s,è,Û,·B



CE»ÝŽg—p't,ìfvfŠf"fgfJ□[fgfŠfbfW□i□•AfJf%□[,Û,½,ÍA—¼•ú□j,ð•Ž!,μ,Û,·B



"@%æŽ®,ì<@"fvf"ff{f<ÍAfRf"fsf...□[f^,^aî•ñ,ð^—□,μ,Ä,ç,é,±,Æ,ðŽ!,μ,Û,·B

'^Ó: fvfŠf"fgf}fl□[fWff,ðŽg—p,μ,Ä,ç,éé□‡□A,·,x,Ä,ìfy□[fW,ì^—□,^al—
1,·,é,Û,ÄŽA□Û,ìóü,ÍSJŽn,^s,è,Û,1,ñ□B



fvfŠf“fgf}fl□[fWff

Windows ,l fAfvfŠfP□[fVf‡f“,©,ç^óü,đ□s,□ê□‡□AfvfŠf“fgf}fl□[fWff ,đ'đ,μ,ÄŽg—p,·,é,±,Æ,ª,Ä,«,Ü,·□B

fvfŠf“fgf}fl□[fWff

,l□i“@†,É•¶□,đ^óü,·,é□ê□‡□A^óü,·,é•¶□,©,ç^êŽžfvfŠf“fgftf@fCf<,ª□i□¬,³,ê,Ü,·□B,±,ê,É,æ,è□AfvfŠf“fgf}fl□[fWff ,ªfofbfNfOf%ofEf“fh,ÄfvfŠf“fgftf@fCf<,đfvfŠf“f^,É‘—□M,μ,Ä,ç,éŠÖ,É□AfvfŠfP□[fVf‡f“ □ā,Ä□i<Æ,đ'±,·,é,±,Æ,ª,Ä,«,Ü,·□B

fvfŠf“fgf}fl□[fWff ,ª□i“@,μ,Ä,ç,È,ç□ê□‡□A•¶□,í'¼□ÚfvfŠf“f^,É‘—

□M,ª,ê,Ü,·□BfvfŠf“f^,É•¶□,đ'¼□Ú‘—

□M,μ,Ä^óü,·,é,Æ□A^êŽžfvfŠf“fgftf@fCf<,đ□¶□¬,μ,Ä^óü,·,é,æ,è,àŽžŠÖ,ª,©,©,è,Ü,·□B,μ,©,μ□AfvfŠf“fgf}fl□[fWff ,đŽg—p,·,é□ê□‡,l□A^êŽžftf@fCf<,đ□¶□¬,·,é,½,ß,l□\ª,ÉffBfXfNfXfy□[fX,đ—p^Ö,·,é•K—v,ª,è,Ü,·□B

fvfŠf“fgf}fl□[fWff ,đ□i“@%Ä^,Ü,½,l□i“@•s^,É,·,é,É,l□A

1. f□fCf“fOf□[fv “à,É,·,é fRf“fgf□□[f<fpflf<fAfCfRf“,đ'đ,μ,Ä,,³/₄,³,ç□B

2. fvfŠf“f^fAfCfRf“,đ'đ,μ,Ä,,³/₄,³,ç□B

3. fvfŠf“f^f_fCfAf□fOf{fbfNfX“à,l

□ufvfŠf“fgf}fl□[fWff,đŽg,□v,l f`fFfbfNf{fbfNfX,đfNfŠfbfN,μ,Ä□AfvfŠf“fgf}fl□[fWff,đ□i“@%Ä^,Ü,½,l□i“@•s^,É,μ,Ä,,³/₄,³,ç□B



DeskJetfXfv [f% [fwf<fv õ^ø

DeskJetfXfv [f% [,É,Â,ç,Ä

DeskJetfXfv [f% [fEjBf“fhfE

flfvfVf±f“

^êžž'âž~ A^ó ü ÄŠJ AŽæ,è,â,ß



DeskJetfXfv [f% [É,Â,ç,Ä

DeskJetfXfv [f% [í ADeskJet J- fv fŠ [Yfv fŠ f^, Á^ó ü, ðŠÇ—, .éfvf fOf% f€, Á, ·B
DeskJetfXfv [f% [É, æ, è, ¶, 'í, ó ü—D æ ± É, ð Y'è, ., é, ±, Æ, a, Á, «, Ü, ·B, Ü, ½ A DeskJetfXfv [f
% [í, ó ü, ó µ, âfv fŠ f^, í—pŽ† Ø, ê™, à, Ž, i, µ, Ü, ·B

DeskJetfXfv [f% [í AWindows, ìfv fŠ f^ fgf} fl [fWff, ì'ã, í, è, Æ, È, è, Ü, ·B, h,m,hi\$²Ü·ïXìßÜ, p×Ñ
(HPACNFIG.EXE), ðŽg, Á, ÄDeskJetfXfv [f% [ðflft, É, ., é, Æ A
Windows, ìfv fŠ f^ fgf} fl [fWff, ðŽg, Á, ÄfofbfnfOf% fh^ó ü, a, Á, «, Ü, ·B, »), ì ê ± A^ó ü, ó µ, ì·\
Ž, í, A, «, Ü, 'ñ B



flfvfVf‡f“

- flfvfVf‡f“f□fjf...□[.l]□u□Y'e•i□X...□v,đ'l'đ,·,é,Æ^È%°□,□€-Ú,đ•i□X,·,é,±,Æ,a,Å,«,Ü,·□B
- fXfv□[f<ffBfœfNfgfŠ
- ^ó□ü—D□æ□‡^É

^È□ã,]flfvfVf‡f“,đ•i□X,·,é,É,Í□A^ó□ü†□A^ó□ü'Ò,¿,]•¶□',a,É,φ,±,Æ,đŠm”F,μ,Ä,,¾,¾,φ□B

1. fvf□fOf%of€f}f□[fWff□A, ,é,φ
 ,lftf@fCf<f}f□[fWff,ìWindowsffBfœfNfgfŠ,É, ,éHPASPR.EXE
 ftf@fCf<đŽÄ□s,μ,ÄDeskJetfXfv□[f%□[fEfbf“fhfE,đŠJ,«,Ü,·□B
2. f□fjf...□[fo□[.©,çflfvfVf‡f“,đ'l'đ,μ,Ü,·□B
3. f□fjf...□[.©,ç□u□Y'e•i□X...□v,đ'l'đ,μ,Ü,·□B
4. •Ž!,¾,é,½f_CfAf□fOf{fbfNfX,©,çfXfv□[f<ffBfœfNfgfŠ,Æ^ó□ü—D□æ□‡^É,đ'l'đ,μ,Ü,·□B
5. OK,đfNfŠfbfN,μ,Ä•i□X,đ—Lœø,É,Ü,·□B

fXfv□[f<ffBfœfNfgfŠ

DeskJetfXfv□[f%□[.l]fXfv□[f<ffBfœfNfgfŠ,đŽg,Á,Äfofbftf@□[—p,]ftf@fCf<,đ□i□¬,μ,Ü,·□B
DeskJetfXfv□[f%□[.đŽg—p,μ,Ä,φ,ÄffBfXfNfXfy□[fX,a,æ,'«,è,É,,É,é□ê□‡,Í□A,±
,]flfvfVf‡f“,đŽg,Á,ÄfXfv□[f%□[—p,É'¼,]ffBfœfNfgfŠ,đ'l'đ,μ,Ä,,¾,¾,φ□B

^ó□ü—D□æ□‡^É

^ó□ü,đ—D□æ,μ,½,φ□ê□‡,Í^ó□ü—D□æ,đ'l'đ,μ,Ü,·□B

fAfvfŠfP□[fVf‡f“□^—□,đ—D□æ,μ,½,φ□ê□‡,Í±ìßø'°¼@Y—D□æ,đ'l'đ,μ,Ü,·□B



ěžž'áž~ □ A^ó □ ü □ ĀŠJ □ AŽæ,è,â,ß

È%°, ì f l f v f V f † f“, Í DeskJet f X f v □ [f% □ [f E f B f“ f h f E, Ā ' ð, · é, ±, Æ, ª, Ā, «, Ü, · □ B

ěžž'áž~

Œ» □ Ý^ó □ ü'†, Ì•ŋ □ ' , Ì^ó □ ü, ð x Ž ~, μ, Ü, · □ B

ó □ ü □ ĀŠJ

ó □ ü x Ž ~, μ, Ä, φ, ½ • ŋ □ ' , Ì^ó □ ü, ð □ ĀŠJ, μ, Ü, · □ B

Žæ,è,â,ß

ó □ ü ' Ò, ĺ □ A^ó □ ü'† □ A^ó □ ü x Ž ~'†, Ì•ŋ □ ' , Ì^ó □ ü, ð f L f f f“ f Z f ‹, μ, Ü, · □ B

f v f Š f“ f ^, É' —, ç, ê, ½ • ŋ □ ' , Ì^ó □ ü, ð ' S, Ä f L f f f“ f Z f ‹, : é, É, Í DeskJet f X f v □ [f

% □ [f E f B f“ f h f E, ð • Ā, ŋ, Ü, · □ B



fvfŠf“f^fhf%_fCfo,ìœEx□□,ÆfGf%_□[

fvfŠf“f^,ìf□fbfZ□[fW

fJ□[fgfŠfbfWœðŠ·(fJf%_□[,©,ç□•,Ö)

fJ□[fgfŠfbfWœðŠ·(□•©,çfJf%_□[,Ö)

fJ□[fgfŠfbfW,ª»•Ê,Å,«,Ü,¹,ñ

fvfŠf“f^%_ž“šfGf%_□[

fvfŠf“f^fGf%_□[

fvfŠf“f^f|□[fgfGf%_□[

ˆó□ü□ĩ,Ÿ—pž†,ðžæ,è□œ,ç,Ä,¾,³,ç



fJ [fgfŠfbfWœðŠ· □ I

ˆóü,;é•¶□,í□•fvfŠf“fgfJ□[fgfŠfbfW,ð•K—v,Æ,μ,Ü,·□BfZfbfg,³,ê,Ä,ç
,éfvfŠf“fgfJ□[fgfŠfbfW,ð□•fvfŠf“fgfJ□[fgfŠfbfW,ÆœðŠ·,μ,Ä,,¼,³,ç□B

fJf%□[fvfŠf“fgfJ□[fgfŠfbfW,ðŽg—

p,μ,Äˆóü,μ,½,ç□ê□‡,â□A□•fvfŠf“fgfJ□[fgfŠfbfW,ª,È,ç□ê□‡,í□AˆóüfWf‡fu,ðfLfff“fZf<,μ,Ä□A
ˆÉ%°,ì,Ç,é,©,ìˆóüf,□[fh,Ä•¶□,ðˆóü,;é,±,Æ,ª,Ä,«,Ü,·□B



Ž©“®□B,±,ì□ê□‡□Af,fmfNf□flfvfVf‡f“,ª¹ˆð,³,ê,Ä,ç,È,ç,±,Æ,ðŠm”F,μ,Ä,,¼,³,ç□B



œÄ`èf,□[fh,Ä□AfJf%□[fOf%ftfBfbfN,Ü,½,íJf%□[ftfHfg,ð¹ˆð□B,±
ì□ê□‡□A•¶□,É“K,μ,½□Y`è,ð¹ˆð,μ,Ä,,¼,³,ç□B



f}fif...fAf<f,□[fh,Ä□AfJf%□[fvfŠf“fgfJ□[fgfŠfbfW,ð¹ˆð,μ,Ä,,¼,³,ç□B
•¶□,ð□→□‡□•,Äˆóü,;é□ê□‡,í□Aˆóüˆ“x,ª¹x,,È,è□AfJf
%□[fvfŠf“fgfJ□[fgfŠfbfW,Äˆóü,;é,Æ,«,æ,è¹⁄₂—È,ìfCf“fN,ðŽg—p,;é,±,Æ,É’□Ó,μ,Ä,,¼,³,ç□B



fJ [fgfŠfbfWŒðŠ· □ I

ˆóü,;é•¶□,íJf%□[fvfŠf“fgfJ□[fgfŠfbfW,ð•K—v,Æ,μ,Ü,·□BfZfbfg,³,ê,Ä,ç
,éfvfŠf“fgfJ□[fgfŠfbfW,ðfJf%□[fvfŠf“fgfJ□[fgfŠfbfW,ÆŒðŠ,μ,Ä,,¾,³,ç□B

□•fvfŠf“fgfJ□[fgfŠfbfW,ðŽg—p,μ,Äˆóü,μ,½,ç□ê□‡,Í□AˆóüfWf‡fu,ðfLfff“fZf<,μ,Ä□AˆÈ
%°,ì,Ç,é,©,ìˆóüf,□[fh,Ä•¶□,ðˆóü,;é,±,Æ,ª,Ä,«,Ü,·□B



ŒÄˆèf,□[fh,Ä□Af,fmfNf□fefLfxfg,Ü,½,Í fOfŒfCfxFP□[f<ð'ìˆð□B,±
,ìê□‡□A•¶□,É□Ä“K,È□Yˆè,ð'ìˆð,μ,Ä,,¾,³,ç□B



f}fjf...fAf<f,□[fh,Ä□A□•fvfŠf“fgfJ□[fgfŠfbfW,ð'ìˆð,μ,Ä,,¾,³,ç□B



fJ [fgfŠfbfW, a"»•Ê, A, «, Ü, 1, ñ [

œ» [YfvfŠf" f^, ÉfZfbfg, ³, è, Ä, ç, éfvfŠf" fgfJ [fgfŠfbfW, a [•, È, ì, ©fJf% [È, ì, ©, ðfvfŠf" f^fhf %fCfo, a"»' è, Ä, «, Ü, 1, ñ [BfvfŠf" f^, ìftf [f" fgfpflf<, ìfCf" fNœðŠ [^ [Y" èf% f" fv, a" _-A, µ, Ä, ç, é [è [±, ì [ACEè, Ä, ½fJ [fgfŠfbfW, a fZfbfg, ³, è, Ä, ç, é, ±, AE, ð Ó- i, µ, Ü, [B" ó [ü, ð' ± [s, , é, È, ì [AfZfbfg, ³, è, Ä, ç, éfvfŠf" fgfJ [fgfŠfbfW, ð" ó [ü, , é • [[É, É•K— v, ÈfvfŠf" fgfJ [fgfŠfbfW, AEœðŠ, µ, Ä, , ¼, ³, ç [B

fvfŠf" f^fhf% fCfo, aœ» [YfZfbfg, ³, è, Ä, ç, éfvfŠf" fgfJ [fgfŠfbfW, ð"»' è, Ä, «, È, çœ" ö, AE, È, Ä, Ä, ç, é- à" è" _ [A" È% [°, ì' †, ì, Ç, è, ©, Ä, [B



fvfŠf" f^, a Windows, ìfRf" fgf [[f< pflf<, Ä' ð, ³, è, Ä, ç, éf [[fg, É [Ú' ±, ³, è, Ä, ç, È, ç [B



Žg—p, µ, Ä, ç, éfvfŠf" f^fP [fu f<, a [A, ; x, Ä, ìfvfŠf" f^fXfe [f^fXf% fCf", ðfTf [[fg, µ, Ä, ç, È, ç [B



fXfCfbf f {fbfNfX, ðŽg—p, µ, Ä, ç, é [è [± [A, »), ìfXfCfbf f {fbfNfX, a, ; x, Ä, ìfvfŠf" f^fXfe [f^fXf% fCf", ðfTf [[fg, µ, Ä, ç, È, ç [B, Ü, ½, ì [A" , [fvfŠf" f^f [[fg, È' ¼, ì' • u, ðŽæ, èt, , Ä, ç, é [è [± [A, »), ì' • u, a fXfe [f^fXf% fCf", ðŽg—p, µ, Ä, ç, é [B
fvfŠf" f^, ð' ¼ [ÚfRf" fsf... [f^, É [Ú' ±, µ, Ä, Ý, Ä, , ¼, ³, ç [B



fvšf“f^%ž“šfGf%□[

fvšf“f^,afvšf“f^f\ftfgfE fF fA,É%ž“š,μ,Ü,1,ñ□B^È%°,ì□kÆ,ð□s,Á,Ä-â'è“_ ,ð%δCE^,μ,Ä,,¾,³,ϕ□B



fvšf“f^,ì“dCE¹,aflf“ ,É,È,Á,Ä,ϕ,é,±,Æ,ðŠm”F,μ,Ä,,¾,³,ϕ□B



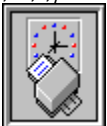
fvšf“f^,af\ftf%fCf“ ,É,È,Á,Ä,ϕ,é□ê□±□A^ó□ü,ð□ÄŠJ,·,é,½,ß flf“f%fcf“ fXfcfbf` ,ð
%Ÿ,μ,Ä,,¾,³,ϕ□B



Žt<l,Ü,è,ðf`fFfbfN,μ,Ä,,¾,³,ϕ□B



fvšf“f^fP□[fuf<,ª□Ú±,³,é,Ä,ϕ,È,ϕ,©□A,Ü,½,Ífvšf“f^fP□[fuf<,É□áŠQ,ª ,è,Ü,·□Bfvf
šf“f^fP□[fuf<,ª□Afvšf“f^,Ü,½,ÍfRf“fsf...□[f^□ä,ì]□[fg,É,μ,Ä,©,è,Æ□Ú±,³,é,Ä,ϕ,é,±,Æ,ðŠm”F,μ,Ä,-
¾,³,ϕ□B



fm□[fgfpf\vrf“ ,©,ç^ó□ü,ð□s,Á,Ä,ϕ,é□ê□±□Afrf“fsf...□[f^,ì“dCE¹,aflf“ ,É,È,Á,Ä,ϕ
,é,ì,Éfvšf“f^,ì“dCE¹,af\ft,É,È,Á,Ä,ϕ,é,Æ□Afpf□□[fZ□[frf“fof,□[fh,E,æ,èfvšf“f^f]□[fg,ª“ì“®•s”\
,É,È,é,±,Æ,ª ,è,Ü,·□B

fvšf“f^,Æfrf“fsf...□[f^,ì“dCE¹,ðf\ft,É,μ,Ä,-
¾,³,ϕ□BŽŸ,É□Afvšf“f^,ì“dCE¹,ðf\ft“ ,É,μ,Ä□A,» ,ìCEäfrf“fsf...□[f^,ì“dCE¹,ðf\ft“ ,É,μ,Ä,,¾,³,ϕ□B,±
,ìó'Ô,©,ç,à,ª^è“x^ó□ü,ðŽÀ□s,μ,Ä,Ý,Ä,,¾,³,ϕ□B



fvfŠf“f^fGf%□[

fvfŠf“f^,ÉfGf%□[^a, è□A^ó□ü,ð'±□s,; ,é,±,Æ,^aÁ,«Ü,¹,ñ□B^È%°°,ì□i<Æ,ð□s,Á,Ä-â'e“_ ,ð%ðCE^,μ,Ä,-
¾,¾,ϕ□B



Ž†l,Ü.ë.ðf`fFfbfN,μ,Ä,¾,¾,ϕ□B



fvfŠf“f^□ã,ìf%□f“fv,^a; ,x,Ä“ -Ä,μ,Ä,ϕ
,é□ê□±□AfvfŠf“f^“à•”,ÉfvfŠf“fgfJ□[fgfŠfbfW,ìŽ©—R,È“@,«,ð-W,°,é•“,^aÉ,ϕ,©,ðf`fFfbfN,μ,Ä,-
¾,¾,ϕ□B



fvfŠf“f^,ì“dCE¹,ðflft,É,μ,Ä□A,à,π^ê“x“dCE¹,ðflf“É,μ,Ä,-
¾,¾,ϕ□BfvfŠf“f^,ìftf□f“fgfpflf<□ã,ìf%□f“fv,^a1,Ä,à“_““,μ,È, ,ê,î□A,à,π^ê“x^ó□ü,ðŽÀ□s,μ,Ä,Ý,Ä,¾,¾,ϕ□B



fvfŠf“f^f|□[fgfGf%□[

fvfŠf“f^f|□[fg,Ö,lfAfNfZfX,É-â'è“_ ,a , ,è,Ü, ·□B^È%°,lìkÆ,ð□s,Á,Ä-â'è“_ð%øðœ^,μ,Ä,,¼,³,ϕ□B



‘¼,lfAfvfŠfP□[fvf‡f“fvf□fOf%of€ ,a□A“ ,lfvfŠf“f^f|□[fg,Á^ó□ü,μ,Ä,ϕ,Ü, ·□BOK(O)
,ðfNfŠfbfN,μ□A,» ,lfAfvfŠfP□[fvf‡f“fvf□fOf%of€ ,a^ó□ü,ðŠ@—
‘, ;,é,Ü,Á,Ö,¿ □A,à,σ^è“x•¶□‘,ð^ó□ü,μ,Ä,Ý,Ä%ø°,³,ϕ□B



“ ,¶f|□[fg,Éfe□[fvfofbfNfAfbfvf‡fjfbfg,È,Ç,lf¼,lf‘u,ðžæ,è•t, ,Ä,ϕ
,é□è□‡,Í□A,» ,lf‘u,af|□[fg,ðžg—p,μ,Ä,ϕ,Ü, ·□BOK,ðfNfŠfbfN,μ,Ä,» ,lf‘u,af|□[fg,ðžg—
p,μ□l,í,é,Ü,Á,Ö,¿ □A,à,σ^è“x•¶□‘,ð^ó□ü,μ,Ä,Ý,Ä,,¼,³,ϕ□B



fvfŠf“f^ ,a Windows ,lfRf“fgf□□[f<fpflf<,Á‘ð,μ,½f|□[fg,É□Ú±,³,è,Ä,ϕ,é,±
,Æ,ðŠm”F,μ,Ä,,¼,³,ϕ□B



‘S,Ä,lfAfvfŠfP□[fvf‡f“ ,ð•Ä,¶ Windows ,ð□Ä<N“@,μ,Ä%ø°,³,ϕ□B



fRf“fsf...□[f^,l“dœ¹,ðflft,É,μ,Ä□A,à,σ^è“x“dœ¹,ðflf“,É,μ,Ä,,¼,³,ϕ□B



ˆó □ ü □ ĩ, Ÿ — p Ž †, ð Ž æ, è □ œ, ç, Ä, , ¾, ³, ç

ˆó □ ü, ð ± □ s, : , é ' O, É □ A f v f Š f " f ^ f A f E f g f v f b f g f G f Š f A, ©, ç, n, g, o f t f B f < f €
, Ü, ½, Í Ö ö ' ð Ž †, ª Ž æ, è □ œ, ©, ê, é, Ì, ð f v f Š f " f ^, ª ' Ö, A, Ä, ç, é □ ó ' Ö, A, · □ B

, ±, Ì f G f % □ [, Í □ A — p Ž † f l f v f V f † f " , É □ ê — p, n, g, o f t f B f < f € □ i f | □ [f Y □ j , Ü, ½, Í □ A □ ê — p Ö ö ' ð Ž † □ i f | □ [f Y □ j
, ª ' ð, ª, ê, Ä, ç, é, ±, Æ, ª Ö ' ' ö, Ä " □ ¶, µ, Ü, · □ B

ˆó □ ü, ð — ³ □ l, Å Ž À □ s, µ, ½, ç □ ê □ †, Í □ A (f | □ [f Y) f l f v f V f † f " , Ì, È, ç □ ê — p, n, g, o f t f B f < f € □ i µ ° Ä Ä Þ × ² □ j , Ü, ½, Í
□ ê — p Ö ö ' ð Ž † □ i µ ° Ä Ä Þ × ² □ j , ð ' l ' ð, µ, Ä, , ¾, ³, ç □ B, ±
, ê, ç, Ì f l f v f V f † f " , ð ' l ' ð, : , é, Æ □ A f y □ [f W, Æ f y □ [f W, Ì Š Ö, É □ " ª Š Ö ' ó □ ü, ª ' á Ž ~, µ □ A ' ó □ ü, ð □ l —
¹, µ, ½ f y □ [f W, ð Š © ' S, É Š £ ' †, ·, é, ±, Æ, ª, Ä, «, Ü, · □ B



f f, fŠ, a, «, è, Ü, 1, ñ

f v f Š f f ^ f h f % f C f o , ì f f , f Š , a • s \ • a , Á A A K È ó ü , ð s , ¢ , ± , Æ , a , Á , « , Ü , 1 , ñ B C E < % Ê “ I , É ^ ó ü ‘ ~ “ x , a x , - , È , è , Ü , • B

Windows , ð ^ è ‘ U • Â , ¶ A Ä N “ ® , ³ , 1 , Ä f f , f Š , ð % ð • ú , µ A Ž g — p , : , é f A f v f Š f P [f V f ‡ f “ , ì , Ý , ð f [f h , µ , Ä , - , ¼ , ³ , ¢ B

^ ó ü , µ , Ä , ¢ , é • ¶ “ , a “ ñ í , É • j Ž G , Á , , é ê ê ‡ , Í A f , f m f N f f e f L f X f g , Ü , ½ , Í , ì , Ý ‘ è , ð Ž Ž , Ý , Ä , , ¼ , ³ , ¢ B

± , ê , Ä , à - â ‘ è “ _ , a % ð C E ^ , ³ , è , È , ¢ ê ê ‡ , Í A f R f “ f s f ... [f ^ , ì f v f X f e f € f f , f Š (RAM) , ð w “ ü , µ , Ä ‘ ü Ý , : , é • K - v , a , , è , Ü , • B



fn [fhffBfXfNfGf% [

DeskJetfXfv [f% [Ü, ½, íWindows, ìfvfŠf“fgf}f [fWff, aŽg—p%Å“
, ìê [Aff [f^, ðfn [fhffBfXfN, ìfofbftf@, Éè’UŠm•Ü, , é, ½, ß Afobftf@, É•K—
v, ÈffBfXfNfXfy [fX, a, «, è, È, ç, Æ, ±, ìfGf% [f [fbfZ [fW, a, Ž!, a, è, Ü, · [B

•s•K—v, Èftf@fCf, ð í [œ, μ, ÄffBfXfNfXfy [fX, ð’ [â, μ, Ä, ©, ç^ó ü, μ, Ä, , %4, a, ç [B

, Ü, ½ [A, ±, ê ÈŠO, ÉfXfv [f% [ðfift, É, μ, Ä^ó ü, , é, ±, Æ, à, Å, «, Ü, · [B DeskJetfXfv [f
% [ðfift, É, , é, É, í [A, [h,m,hiš²Ü•ïXlßÜ, b×Ñ](#) HPACNFIG.EXE, ðŽg, ç

, Ü, · [BWindows, ìfvfŠf“fgf}f [fWff, ðfift, É, , é, É, í [A

f [fCf“fEfbf“fhfE, ©, çfRf“fgf [f [f [f [f, ð’ í, Ñ [AfvfŠf“f^fAfCfRf“, ðfNfŠfbfN, μ, Ä [ufvfŠf“
fgf}f [fWff, ðŽg, a [v, ðfift, É, μ, Ü, · [B



^ê”Êfgf%□[

^È%°;É<“,°;éfvfŠf“f^fhf%°fCfo“à•”fGf%□[,l1,Â,a”□¶,μ,Ü,μ,½□B



•K—v,ÈŽ:œ¹,a f□□[fh,Â,«,È,φ□B



•K—v,ÈfvfŠf“f^fhf%°fCfoftf@fCf<,a,È,φ□B



f□f,fŠ,a¼,lAfvfŠfP□[fVf‡f“,É,æ,è”j%°ó,³,è,Ä,φ,é□B
±,ê,ç,l—â’è“_δ%°δœ^,·,é,É,l Windows ,ðê“x□l—¹,μ,Ä,,¾,³,φ□B,»μ,Ä□A^ó□ü,É•K—
v,ÈfAfvfŠfP□[fVf‡f“,l,Ý,ðf□□[fh,μ□A,à,πê“x^ó□ü,ðŽÄ□s,μ,Ä,Ý,Ä,,¾,³,φ□B



fvfŠf“f^fhf%ofCfoŽg—p’t

fXfv□[f%□[^aflft,É,È,Á,Ä,ç,ÄfvfŠf“f^^a¼,lfAfvfŠfP□[fVf‡f“,đóü,μ,Ä,ç,éê±,É□A,±
lf□fbfZ□[fW,^aŽ!,³é,Ü,·□BfXfv□[f%□[^aflft,É,È,Á,Ä,ç
é,Æ□A^ê“x,É,P,Ä,lfAfvfŠfP□[fVf‡f“,μ,©óü,·é,±
Æ,Í,Ä,«,Ü,¹ñ□BCE»□Y^óü’t,lfAfvfŠfP□[fVf‡f“,^al—¹,μ,Ä,©,ç□A,à,π^ê“x^óü,đ,μ,Ä,,³/₄,³,ç□B
^óü’t,lfAfvfŠfP□[fVf‡f“,^aÈ,Ä,±,lf□fbfZ□[fW,^a
Ž!,³é,éê±,í□AWindowsŽÁ□s’t,ÉfAfvfŠfP□[fVf‡f“,É%½“™,©,ì-âè,^a□¶,μ,½,±
Æ,^al,¡,ç,é,Ü,·□B,»,ì,æ,π,Èê±,í□AWindows,đ□Ä<N“@,μ,Ä,©,çóü,đ,μ,Ä,,³/₄,³,ç□B
•j□”,lftf@fCf<,đfXfv□[f<,μ,½,çê±,í□A [h.m.hiŠ²Ü•í□XißÜ_b×Ñ](#) HPACNFIG.EXE.
đŽg,Á,ÄDeskJetfXfv□[f%□[đŽg—p%Â□ifNfŠfbfN,μ,Ä□u,~v,đ□Á,·□j,É,μ,Ü,·□B



fhf%ofCfo Y'èfGf%o[

fvfŠf“f^fhf%ofCfo,ìY'è,aAf}fjf...fAfc,À•ìX,³,è,½,©A,Ü,½,í¼,ìfvfŠf“f^fhf%ofCfo,ðŽg—
p,μ,Ä•ìX,³,è,Ü,μ,½B

^È%°,ììkÆ,ðs,Ä,ÄA-â'è“_ð%ðCE^,μ,Ä,,¾,³,çB



WIN.INI ftf@fCfc,ð•ìX,μ,½ê±,íA,à,à^è“x^óü,ðŽÀs,μ,Ä,Ý,Ä,,¾,³,çBfhf
%ofCfo,íŽ©“@“l,ÉÄY'è,ðs,ç,Ü;B



¼,ìfvfŠf“f^,ðŽg—p,μ,Ä,ç,éê±,âAfvfŠf“f^fhf%ofCfo,ð““ìfvfŠf“f^f|fg,ÉÚ±
,μ,Ä,ç,éê±,íAfvfŠf“f^fhf%ofCfo,ð•ìX,:éO,ÉAfvfŠf“f^,a^óüfWf±fu,ðŠ@—¹,μ,Ä,ç,é,±
,Æ,ðŠm”F,μ,Ä,,¾,³,çB



Windows ,ðÄfXf^fg,μ,ÄA^óü,ð,à,à^è“xŽÀs,μ,Ä,Ý,Ä,,¾,³,çB



Žt,Ü,è,ì%øđÁ

Žt,Ü,è,ì"□ŕ,í□AfvfŠf" f^□ā,Ĺžó□M'†f%of"fv,Æ flf" f%ofCf" f%of"fv,ì"Žž" _-Ā,É,æ,èŽ,³,è,Ü,·□B

1. fvfŠf" f^"dŒ',ðflft,É,μ,Ä,,¼,³,ϕ□B

2. fvfŠf" f^fJfo□[,ðŠJ,ϕ,Ä,,¼,³,ϕ□i□ā,ÉŽ□,ι□ā,°,é,æ,μ,É,·,é□j□B

3.—pŽ†fgfŒfC,ð□,μ□ā,ÉŽ□,ι□ā,°,é,æ,μ,É,μ,Äžæ,èŠO,μ,Ä,,¼,³,ϕ□B

4.—pŽ†,ð,ä,Á,,è,ÆŽè'O,É^ø,ϕ,Äžæ,è□œ,ϕ,Ä,,¼,³,ϕ□B

5.—pŽ†,ðžæ,è□œ,ϕ,½Œă□A—pŽ†fgfŒfC,ÆfvfŠf" f^fJfo□[,ðfZfbfg,μ'¼,μ,Ä,,¼,³,ϕ□B

6.—pŽ†,ð□³,μ,fgfŒfC,ÉfZfbfg,μ,Ä□Ä"x^ó□ü,ðžÀ□s,μ,Ä,,¼,³,ϕ□B



