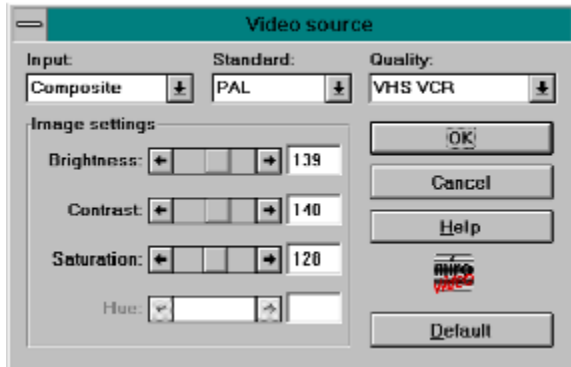


## Video source

The menu item *Movie Capture* and the option *Video Source* enable you to choose the video source and offer different possibilities for setting the video quality .



[Input](#)

[Standard](#)

[Quality](#)

[Image settings](#)

## **Input**

This is where you can set the miroVIDEO DC20 video input to which the video source is connected: Composite or S-Video. This setting is permanent. If you connect the video source to another video input, you must change this setting. Otherwise, there will be no video display on your monitor. The standard changes automatically if the input is changed.

## **Standard**

This is where you can set video standard of the video source: PAL, NTSC, or SECAM.

## **Quality**

This is where you can set the quality. Try several different settings, since the quality can also be poor when set to S-VHS quality.

## **Image settings**

In the video source window, you can also set the brightness, contrast, hue, and, for NTSC, the color angle. You can preview the video image simultaneously as you change the settings.

