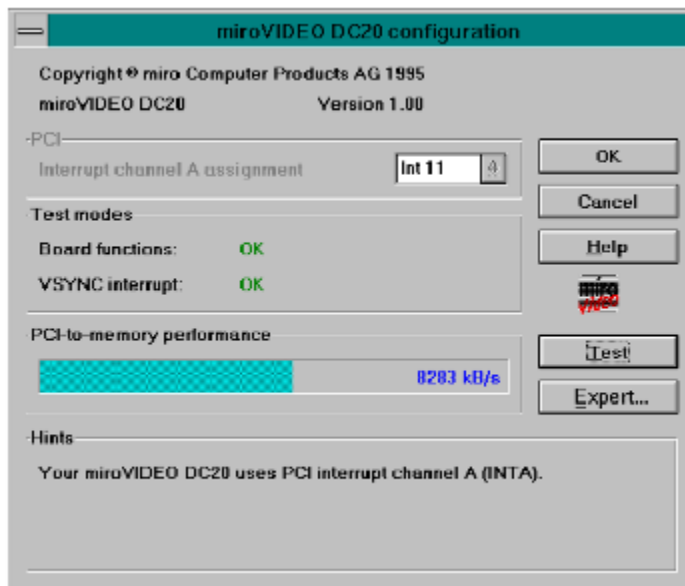


## miroVIDEO DC20 configuration

During the installation the miroVIDEO DC20 configuration program is started automatically. The configuration program tests your miroVIDEO DC20 and analyzes your computer system.

If you want to start the installation program later, double-click on the program icon in the miroVIDEO DC20 program group.



[Test](#)

[Expert](#)

## Test

Click on *Test* to test the hardware:

### **Interrupt Channel A assignment**

This shows which interrupt the mother board BIOS has assigned to the miroVIDEO DC20. The interrupt is assigned automatically in Plug & Play systems and can be changed only in the setup of your computer.

⇒ In many systems, you must additionally assign the interrupt channel A by jumper or through an entry in the BIOS Setup. Please refer to your computer manual in this case. If no interrupt is assigned, then it can not be tested to see if it is functioning properly!

### **Test Modes**

Checks whether all components of the miroVIDEO DC20 are functioning correctly. You will be alerted if an error is detected. In this case, test the miroVIDEO DC20 in another slot.

### **PCI to memory performance**

This checks how quickly data can be transferred from miroVIDEO DC20 to the main memory through the PCI bus. The rate attained depends primarily on the processor, the type of main memory, the type of mother board, and the motherboard settings. The miroVIDEO DC20 itself offers maximum PCI speed!

## **Expert**

If you are installing the miroVIDEO DC20 for the first time and the test was successful, the test program for hard drive transfer will start automatically. [miroVIDEO-Expert](#) measures the performance of your hard drive. If more than one hard drive is installed in your system, you should generally test all hard drives present and then use the hard drive with the highest data rate for video.

