

# fxf`f`f}マークの説明Of%of€

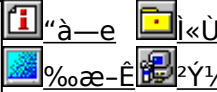


## Diskdrive benchmark on Win32 1.12 **NEW!**

©@@S@F'É" c—Y"ñŽ

©@|@|@|@|@ <http://www.netpassport.or.jp/~wtukapon/>

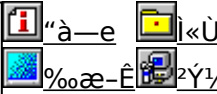
Win32ŠA<<@iWindows 95/NT 4.0/NT 3.51@j%º,É,;,é@AfŠf€@|fofuf<@ffBfA,δ,Ó,,pffBfXfNfhf  
%ofCfu,lfpftfH@|f}f"X,δ'a'è,.,évf@fOf%of€,Å,·@B



## WCPUID.EXE Version 1.0a for Win32 **NEW!**

©@@S@F.H.Oda!Ž

Windows 95 /NT 4.0@ã,Å@ACPU,lfNf@fbfNŽü" g@" @A,;,æ,NMMX(TM) TechnologyfTf@|fg,l—L-³,δ'a'è,.,évf@fOf%of€,Å,·@B

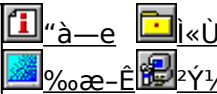


## OpenGL Benchmark **NEW!**

©@@S@FYoccyŽ

©@|@|@|@|@ <http://www.bekkoame.or.jp/~yoccy/index.html>

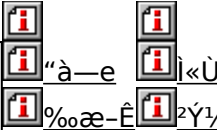
OpenGL,ì@«" \,δ'a'è,.,é,½,ß,lfvf@fOf%of€,Å,·@B



## OpenGL xYA²N **NEW!**

©@@S@F€'~@CE ŽÒ Silicon Graphics, Inc. "J@Ú@Afff,ò@- ,ä,¢ Ž

OpenGL Benchmark,È,Ç@OpenGL'í%ºž,lfvtfg,ì" @ò,É•K—v,Èf%of"f^fCf€f%ofCfuf%ofŠ,Æ@A,»,è,δŽg,Å,½fff,  
%of€,Å,·@B



## HDBENCH(Ê°ÄpÄp"½ ípYÁ) Ver 2.3 **UP!**

©@@S@FEP82%ºù/,©, , Ž

©@|@|@|@|@ <http://www.luice.or.jp/~ep82kazu/>

"à—e ì«ÙÀp

%ºæ—Ê ²Y½Ä

fn@|fhfffBfXfN@A`%ºæ@ACPU,ì'-,³,δ'a'è,.,évf@fOf%of€,Å,·@B



**DDBENCH(DirectDrawÍPÝÁ) Ver 1.41**

© 1998 by EP82, ©, Ž  
@ http://www.luice.or.jp/~ep82kazu/

“à—e i«ÙÀP

DirectDraw, l'x, ð'è, évf fOf f€, Å, B

%œ-Ê ²Ý½Ä



**Performance meter for Intel 686(PFM686) ver 1.2B**

© 1998 by i, ±, Ž A'æŽO<ž•lŽ

“à—e i«ÙÀP

Pentium È ~, lCPU, ðŽg, Å, ½ PC, lŠO• f f, fŠfAfNfZfX' ñ“x, ð'a'è, ., évf fOf f€, Å, B

%œ-Ê ²Ý½Ä



**dj1src k.zip go32(digpp 1.x) kitoh"Á2**

© 1998 by i @ DJ delorie Ž @ %ü • i @ ^ É “ ; œö—Y(kitoh) Ž

“à—e i«ÙÀP

PFM686, lŽÀ s, É•K—v, Ègo32, lŽÀ sftf@fCf, ðŠÜ, p Adjgpp, lkitoh"Á%ü• lfpfbfP[fW, Å, B

²Ý½Ä



**PFM486 Ver.1.77H •] %z "Á**

© 1998 by æŽO<ž•l Ž

“à—e i«ÙÀP

386 È ~, l x86 CPU, ðŽg, Å, ½ PC, lŠO• f f, fŠ“\, ð'a'è, ., évf fOf f€, Å, B

%œ-Ê ²Ý½Ä



**f f, fŠ [fx f f] [fN CORETEST/97 1.01**

© 1998 by O“c<X» Ž

f} fVf“, l f, fŠfAfNfZfXfXfs [fh, ð'a'è, ., évf fOf f€, Å, B

“à—e i«ÙÀP

%œ-Ê ²Ý½Ä



**fQ [f€—pfOf%ftfBfbfNxf“f f} [fNfefXfg GBENCH32 2.0**

© 1998 by U, é, , ç Ž

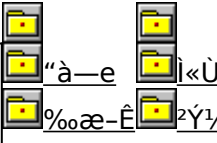
“à—e i«ÙÀP

%œ-Ê ²Ý½Ä

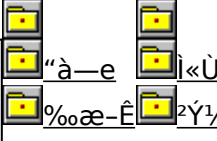
fOf%oftfBfbfN,l<“\,đ’a’è,.,évfjOf%of€,Å,·B



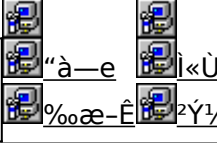
**WinGfpftH[f]f“fXfefXfg GTEST ver.1.2**  
@@S\$F,Û,é, ,ç Z  
WinG,lfpftfH[f]f“fX,đ’a’è,.,évfjOf%of€,Å,·B



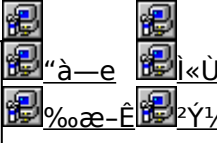
**VTBENCH DOS/V Text Video Benchmark Ver. 1.2**  
@@S\$F-k’o•q•F Z  
@@@F@http://www.cadin.or.jp/users/baxsoft/  
DOS/V,lfefLfXfg%œ-ËŠŒW,lfxfs[fh,ðEv’a,.,évfjOf%of€,Å,·B



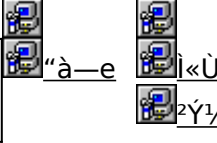
**S”Z@%oiZĐf[f<fR f[f<fRfxf“f f} [fN**  
@@S\$F”Z@%oiZĐf[f<fR  
@@@F@http://www.melcoinc.co.jp/  
SeZü•Œ•’u,lfpftfH[f]f“fX,đ’a’è,.,évfjOf%of€,Å,·B



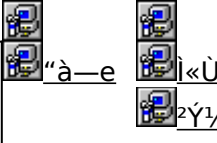
**S”Z@%oiZĐ fAfC Efi[Eff[f^<@Sí fAfVŠxf“f**  
@@S\$F”Z@%oiZĐ fAfC Efi[Eff[f^<@Sí  
@@@F@http://www.iodata.co.jp/  
Windows 95ã,ÅZÀÛ,ÉfAfVfŠP[fVf#f“,ðZÀ[s,μ,½,Æ,«,lVfXfef€<“\,ð•]%,.,évfjOf%of€,Å,·B



**S”Z@%oiZĐ fAfC Efi[Eff[f^<@Sí Topic for Windows Ver 1.04**  
@@S\$F”Z@%oiZĐ fAfC Efi[Eff[f^<@Sí  
@@@F@http://www.iodata.co.jp/  
E»ÛYžg—p,μ,Å,ç,é Windows fVfXfef€,lfpftfH[f]f“fX,đ’a’è,μ,½,èA<@“\,l—L-3,ðEÛ,.,évfjOf%of€,Å,·B



**WHATIDE**  
@@S\$F Tom Warren Ž  
DOSã,ÅIDE,lfn[fhfffBfXfN,lîî•ñ,ð•Žl,.,évfjOf%of€,Å,·B



**Quantum Data Access Time Benchmark**  
@@S\$F Quantum Corporation  
@@@F@http://www.quantum.com/  
fn[fhfffBfXfN,lff[f^fAfNfZfX’—“x,Æ”]’—’—“x,đ’a’è,.,éxf“f f} [fNfVfOf%of€,Å,·B





**NAMCO HISTORY VOL.1('ICE±"Å**

@@S"Z®%iZĐjif€fR

@@@@http://www.namco.co.jp/

%N,¼ifQ[f€,δW,β,½NAMCO HISTORY VOL.1,ì'ICE±"Åifxf"f`f}[fN<@"\,Â,«j,Â,·B



"à—e i«Ù



%œ-Ê ²Ý



**fm[fg,o,b—pfobfefŞfefXfgvf[fOf%of€ Revision 0.21**

@@S^"Vã ~aOZ

fm[fgfpfRf",lfobfefŞZ'±ŽžŠÖ,ð'â'è,·éxf"f`f}[fNfvf[fOf%of€,Â,·B



"à—e i«Ù



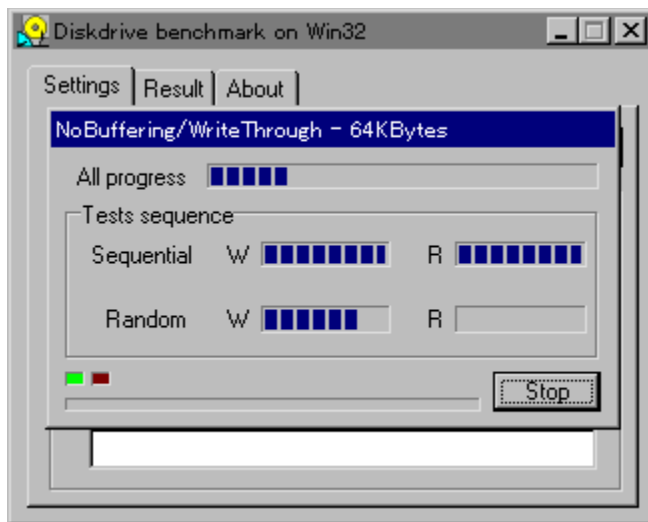
%œ-Ê ²Ý

## Diskdrive benchmark on Win32 1.12

**INSTALL** fC“fXfg[f<,iŽÀs



%œ-ÊfCf[fW



Žû~^ftfHf<f\_

DISC1:\BENCH\DBNCH112

---



§ì

'È“c—Y“ňŽ

<http://www.netpassport.or.jp/~wtukapon/>



“à—e

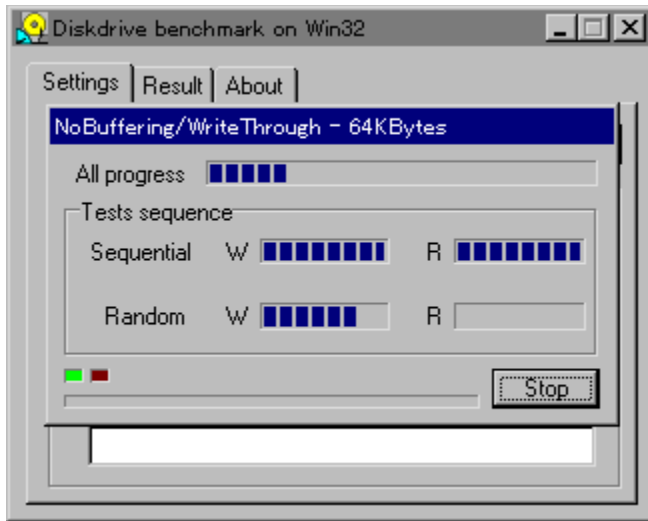
Win32ŠÂ<«iWindows 95/NT 4.0/NT 3.51j%º,É,“,~,éAfŠf€[fofuf<f[fffBfA,đ,Ó,-

,pfffBfXfNfhf%ofCfu,ìpftjH[f}f“fX,ð‘a’è,·,évfj[]fOf%of€,Å,·[]B



@ú.µ.í[]ADISC1:\BENCH\DBNCH112\DBENCH32.HTM,ð,<sup>2</sup>—.,<sup>3</sup>/<sub>4</sub>,<sup>3</sup>,ç[]B

---



Win32ŠÅ««iWindows 95/NT 4.0/NT 3.51j%º,É,¨,¯,éAfŠf€[fufuf<f[fffBfA,đ,Ó,,bfffBfXfNfhf  
%ofCfu,İfpftfH[f}f“fX,đ‘è,·,évf[fOf%of€,Å,·B




@Ú,ı,İADISC1:\BENCH\DBNCH112\DBENCH32.HTM,đ,<sup>2</sup>—,.,<sup>3</sup>/<sub>4</sub>,<sup>3</sup>.çB



DISC1:\BENCH\DBNCH112

 fC“fXfg [f<,iŽÀ s

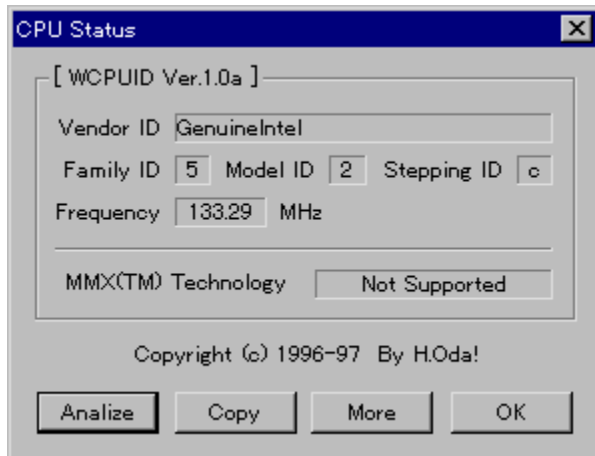
# WCPUID.EXE Version 1.0a for Win32

 fCf“fXfg□[f<,iŽÀ□s(WCPUID.EXE Version 1.0)

 ftf@fCf<,lfRfs□[(Version 1.0a,Ö,i□••a)



%œ-ÊfCf□□[fW



Žú~^ftfHf<f\_

DISC1:\BENCH\WCPU100 (WCPUID.EXE Version 1.0)

DISC1:\BENCH\WCPU100A (Version 1.0a,Ö,i□••a)



□\$□i

H.Oda!Ž□



“à-e

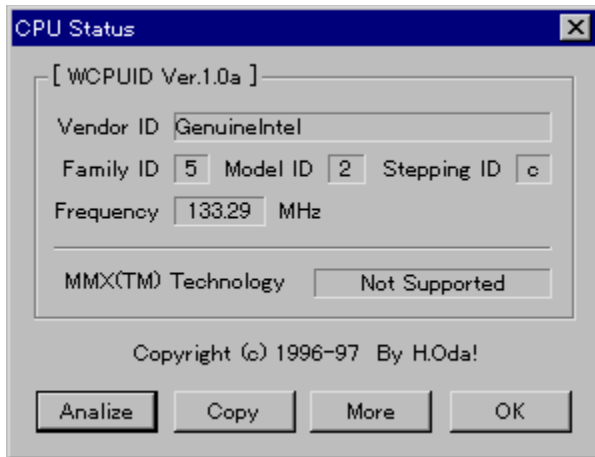
Windows 95 /NT 4.0  
—L-³,ð'ª'è,·,éfvj[]Of%of€,Å,·[]B1.0a,Ö,İfo[]fWf#f" fAfbfv[]·ªfpfbf` ,ð, ,Ä,é,±  
,Æ,É,æ,è[]A[]-[]"" \_'æ2^Ê,Ü,Ä,İfNf[]fbfNŽü" g[]" ,ð³Šm,É'ª,é,±,Æ,ª,Ä,«,Ü,·[]B




@[]Ú,µ,İ[]ADISC1:\BENCH\WCPU100\WCPUID.TXT[]i-{}'[]j,ð,²—,.,¾,³,ç[]B




@[]Ú,µ,İ[]ADISC1:\BENCH\WCPU100A\WCPU100A.TXT[]i[]·ª[]j,ð,²—,.,¾,³,ç[]B



Windows 95 /NT 4.0 Ā Ā CPU, ĩfNf ĩfbfNŽü”g ĩ” ĩA, ĩ, æ, ĩMMX(TM) Technology ĩf ĩ ĩfg, ĩ—L-  
³, ð’æ’è, ., éfvf ĩfOf%of€, Ā, ĩB1.0a, Ō, ĩfo ĩ ĩfWf#f“fAfbfv ĩ••³ ĩfbf` , ð, , Ā, é, ±  
, Ā, É, æ, è ĩA ĩ— ĩ”” \_ ‘æ2^ Ē, Ū, Ā, ĩfNf ĩfbfNŽü”g ĩ” , ð ĩ³ Šm, Ē’æ, é, ±, Ā, ĩ, Ā, «, Ū, . ĩB

 ĩ@ ĩÚ, ĩ, ĩ ĩ ĩADISC1:\BENCH\WCPU100\WCPUID.TXT ĩ- ĩ ĩ ĩ, ð, ²—, ., ³/4, ³, ĩ ĩB

 ĩ@ ĩÚ, ĩ, ĩ ĩ ĩADISC1:\BENCH\WCPU100A\WCPU100A.TXT ĩ ĩ••³ ĩ ĩ, ð, ²—, ., ³/4, ³, ĩ ĩB

DISC1:\BENCH\WCPU100 (WCPUID.EXE Version 1.0)  
DISC1:\BENCH\WCPU100A (Version 1.0a,Ö,í·•ª)

 fC“fXfg[f<,iŽÀ[s(WCPUID.EXE Version 1.0)

 ftf@fCf<,İfRfs[(Version 1.0a,Ö,i••a)

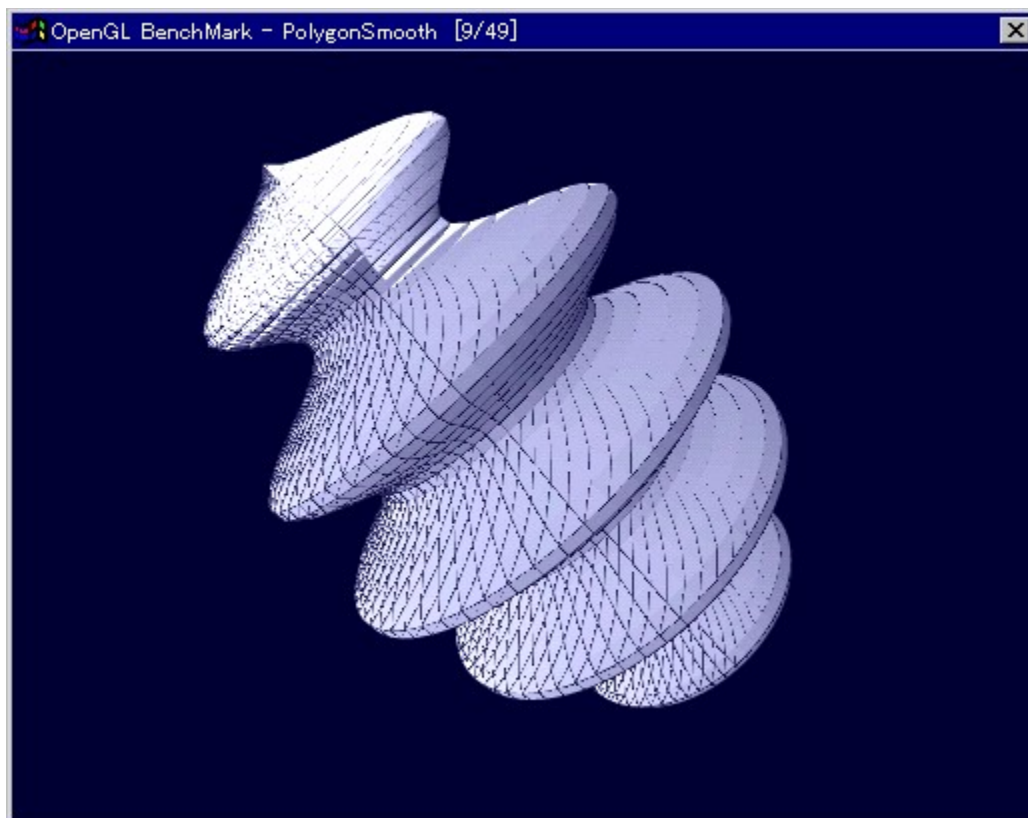


# OpenGL Benchmark

fC“fXfg [f<,ižA s



%oæ-ÊfCf [fw



žû~^ftfHf·f\_

DISC1:\BENCH\OGLB142I



[S i

Yoccy  
<http://www.bekkoame.or.jp/~yoccy/index.html>



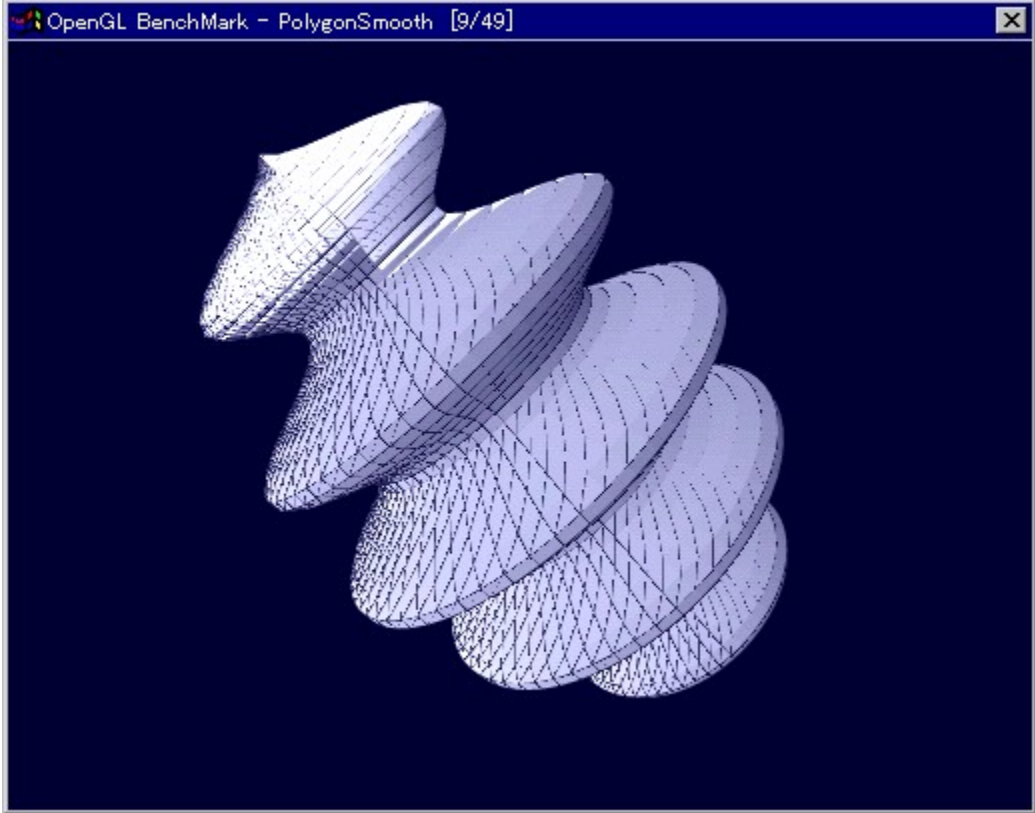
“à—e

OpenGL, ì«”\, ð’è, , é, ½, ß, ìfvf[]fOf%of€ , Å, ·B




@Ú, μ, íADISC1:\BENCH\OGLB142\README\_1.TXT, ð, ²—, , ¾, ³, çB

---



OpenGL, ì«" \, ð'ª'è, ·, é, ½, ß, ìfvf ìfOf%of€ , Å, · ìB

 @Ú, µ, · í ADISC1:\BENCH\OGLB142\README\_1.TXT, ð, ² —, ·, ¾, ³, ç ìB

DISC1:\BENCH\OGLB142I

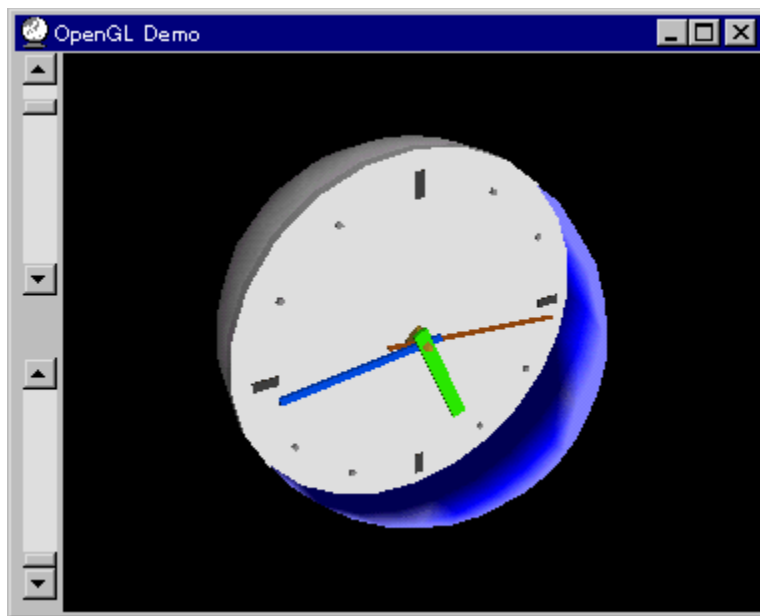
 fC“fXfg [f<,iŽÀ s

# OpenGL xYÀ²Ñ

fC“fXfg[f<,iŽÀ[s



%oæ-ÊfCf[fW



Žû~^ftfHf<f\_

DISC1:\BENCH\OPENGL11



[\$i

Œ''~[]Œ ŽÒ Silicon Graphics, Inc. "[]Ú[]Afff,[]\~ ,ä,ç Ž

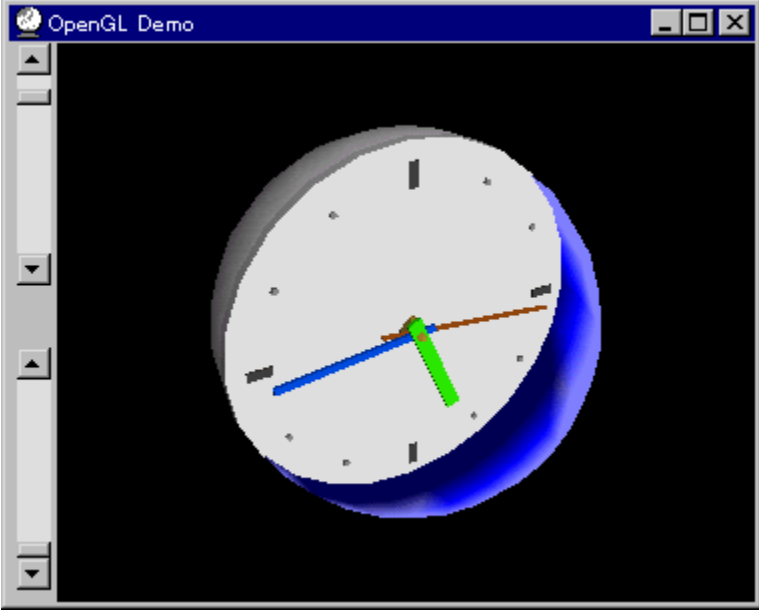


"à-e

OpenGL Benchmark, È, Ç, A OpenGL 'Î%ž, Ìftfg, Ì" ® Ì, È•K—v, Èf%of“f^fCf€f%ofCfuf  
%ofŠ, ÆA, » , è, ðŽg, Á, ½fff, fvffOf%of€, Å, ·BfCf“fXfg[f<, ·, é, ±  
, Æ, È, æ, èADLL, afVfXfef€ftfHf<f\_ , ÉfRfs[ , ³, ê, Ü, ·B  
**OpenGL, ÍAWindows NT 4.0 , ”, æ, Nfo[fWf†f“4.00.950B^È~ , ÌWindows  
95iOSR2j, É, Í•W€ , ÅfCf“fXfg[f<, ³, ê, Å, ç  
, Ü, ·Bfo[fWf†f“4.00.950a^È'O, ÌWindows 95, ð, ”Žg, ç  
, Ìê†, ÌYAfCf“fXfg[f<, ðs, È, Å, Å, , ¾, ³, çB, ”Žg, ç  
, ÌWindows, Ìfo[fWf†f“ , ÌAfRf“fgf[f<fpf<, ÌVfXfef€, ÌvffpfefB, ÅŠm”F, ·, é, ±  
, Æ, ², Å, <, Ü, ·B**

---





OpenGL Benchmark, È, Ç, AOpenGL 'í%ž, ìftfg, ì" @ ì, È•K—v, Èf%of“f^fCf€f%ofCfuf  
%ofŠ, Æ, A, », è, ðŽg, Å, ½fff, fvffOf%of€, Å, ·BfCf“fXfg[f<, ·, é, ±  
, Æ, È, æ, èADLL, ðVfXfef€ftfHf<f\_, ÈfRfs[., ³, è, Ü, ·B  
**OpenGL, íAWindows NT 4.0 , ”, æ, Ñfo[fWf†f“4.00.950B^È~ , ìWindows  
95iOSR2j, È, í•W€, ÅfCf“fXfg[f<, ³, è, Å, ç, Ü, ·Bfo[fWf†f“4.00.950a^È'O, ìWindows  
95, ð, Žg, ç, ìê†, ì, YAfCf“fXfg[f<, ðs, È, Å, Å, ¾, ¾, çB, Žg, ç  
, ìWindows, ìfo[fWf†f“, íAfRf“fgf[f<fpfj<, ìVfXfef€, ìvfjfpfefB, ÅŠm”F, ·, é, ±  
, Æ, ð, Å, «, Ü, ·B**

DISC1:\BENCH\OPENGL11

 fC“fXfg [f<,iŽÀ s

# HDBENCH(ハードディスクベンチマーク) Ver 2.3

実行方法



実行方法



実行方法

DISC1:\BENCH\HDBE230



実行方法

EP82%ü/,©, Ž  
<http://www.luice.or.jp/~ep82kazu/>



“à—e

fn [fhfffBfXfn]A•`%æ [ACPU,ì'→,³,ð'a'è,.,évf [Of%of€,Å,·B^È%º,ì€-Ú,É,Â,ç  
,Ä,ì'a'è,ð [s,É,ç,Ü,·B  
 [Efn [fhfffBfXfn  
fS [fh [Af%ofCf [AfLfffbfVf...,ì•bŠÔ,ì“]’—byte”  
 [E•`%æ  
1•bŠÔ,ì<é€` [•%~ [•fXfNf [ [f<,ì•`%æ%ñ”  
 [ECPU  
1•bŠÔ“-,½,è,ì•,“@ [→ [“\_ %%%ŽŽ [• [® [“%%ŽŽ,ì€vŽŽ%ñ”

---

HDBENCH

終了 ｺﾂﾟｰ シｽﾃﾑ ﾊﾙﾌﾞ ﾗﾞﾗﾌ

ALL 総合 10315

CPU 浮動小数点 11453 整数演算 12455

VIDEO 矩形 15044 円 10525 テキスト 8202 スクロール 78 DirectDraw 0

DISK READ (KB/s) 9317 WRITE (KB/s) 9368 CACHE (KB/s) 16392

DRIVE D:¥Hard Disk

使用容量 10MB

オプション

- READから測定
- ドライブ情報もｺﾂﾟｰする。
- 結果のみｺﾂﾟｰする。
- CD-ROM方式(既存ﾌﾞﾗｲﾄﾞ)



fn[fhfffBfXfN]A`%æ[ACPU,ì-,³,ð'è,·,évf[fOf%of€,Å,·B^È%º,ì€-Ú,É,Â,ç,Ä,ì'a'è,ðs,È,ç  
,Û,·B  
[Efn[fhfffBfXfN  
fŠ[fh[Af%ofCfG[AfLfffbfVf...ì1•bŠÔ,ì"']—byte"  
[E`%æ  
1•bŠÔ,ì<éE`[·%~[·fXfNf[f<,ì`%æ%ñ"  
[ECPU  
1•bŠÔ"-,½,è,ì,“®[-]“\_%%ŽZ[·®]”%%ŽZ,ìEvŽZ%ñ”



DISC1:\BENCH\HDBE230

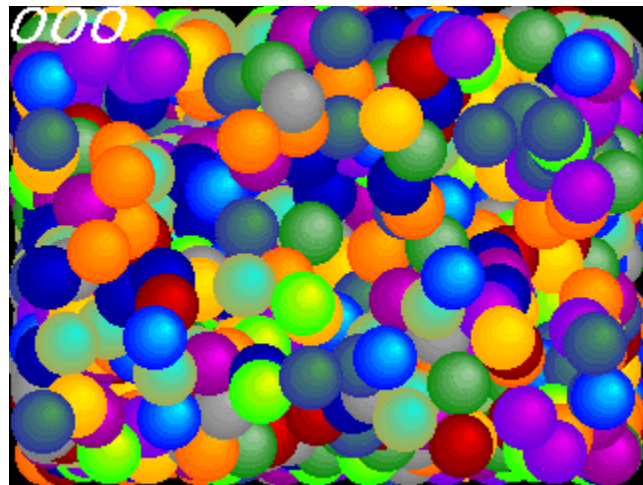
 fC“fXfg [f<,iŽÀ s


# DDBENCH(DirectDrawÍPÝÁ) Ver 1.41

 fCf“fXfg[]f<,ižÀ[]s



 %œ-ÊfCf[]fW



 Zû~^ftfHf·f\_

DISC1:\BENCH\DDBEN141

---



[]\$[]

EP82%œü/,©, Ž  
<http://www.luice.or.jp/~ep82kazu/>



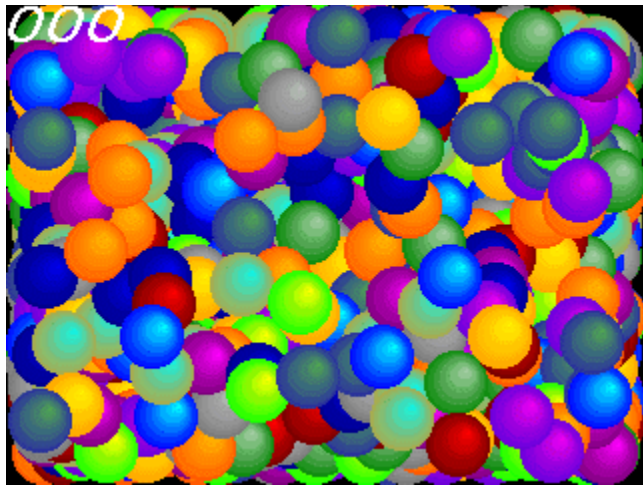
“à—e

DirectDraw,ì•`%œ'—“x,đ'a'è,·,éfvf[]fOf%œf€,Å,·BŽÀ[]s,·,é,Æ[]A2,000-ž,ÌSPRITE,đ•\  
Ž!,<sup>3</sup>,<sup>1</sup>/<sub>2</sub>,Æ,«,ì,P•bŠŌ,ì%œ-Ê[]',«Š·,ì%œñ[]”,đ[]¶[]ã,É•\Ž!,μ,Û,·[]B

---

DirectDraw, íADISC2, É“ü, Á, Ä, ç, éDirectX, őfCf“fXfg[f<, : , é, ±, Æ, É, æ, èŽg—p, Å, «, Ü, ·B

---



DirectDraw,ì`%œ'¬“x,ð'è,·,éfvf[]fOf%of€,Å,·□BŽÀ□s,·,é,Æ□A2,000-‡,ÌSPRITE,ð•\  
Ž!,<sup>3</sup>,<sup>1</sup>,½,Æ,«,ì,P•bŚÔ,ì%œ-Ê□',«Š,ì%ñ□”,ð□□ã,É•\Ž!,μ,Ü,·□B  
DirectDraw,í□ADISC2,É“ü,Á,Ä,ç,éDirectX,ðfCf“fXfg□[f<,·,é,±,Æ,É,æ,èŽg—p,Å,«,Ü,·□B

DISC1:\BENCH\DDBEN141

 fC“fXfg [f<,iŽÀ s



# Performance meter for Intel 686(PFM686) ver 1.2B

 ftf@fCf<,lfRfs



 %oæ-ÊfCf [fW

```
C:\BENCH\PFM686CB>go32 pfm686.g32
go32 version 1.12.maint3 Copyright (C) 1994 DJ Delorie

-- pfm686 ver1.2B DysanKeihin & (koji) --
Warning(pfm686) : Physical memory was allocated discontinuously(63).
-----
|CPU: P54C [GenuineIntel Fam5 Md12 Stp12]|
|-----|
| 133.27[MHz] | [ns/dword] | [CPUclocks]|
|-----+-----+-----|
| E-cache read | 14.613 | 1.947 |
| E-cache write | 43.690 | 5.822 |
| main read | 32.457 | 4.326 |
| main write | 44.806 | 5.971 |
|-----|
C:\BENCH\PFM686CB>
```



Zû~^ftfHf<f\_

DISC1:\BENCH\PFM686CB

---



□\$□ì

□i,±,¶□jŽ□□A'æŽO<ž•lŽ□



“à—e

Pentium^È~ ,ìCPU,đŽg,Á,½ PC ,ìŠO•”f f, fŠfAfNfZfX’¬“x,đ’è,·,éfvf fOf%of€  
,Á,·BŽÀs,É,ÍDOS-Extender,ìgo32,ª•K—v,Á,·B



@Ú,μ,íADISC1:\BENCH\PFM686CB\PFM686.DOC,đ,²—, ,¾,³,ϕB

---

```
C:\BENCH\PFM686CB>go32 pfm686.g32
go32 version 1.12.maint3 Copyright (C) 1994 DJ Delorie
```

```
-- pfm686 ver1.2B DysanKeihin & (koji) --
Warning(pfm686) : Physical memory was allocated discontinuously(63).
```

```
-----
|CPU: P54C [GenuineIntel Fam5 Md12 Stp12]|
|-----|
| 133.27[MHz] | [ns/dword] |[CPUclocks]|
|-----|
| E-cache read | 14.613 | 1.947 |
| E-cache write | 43.690 | 5.822 |
| main read | 32.457 | 4.326 |
| main write | 44.806 | 5.971 |
|-----|
```

```
C:\BENCH\PFM686CB>
```

Pentium^È~ ,ìCPU,đŽg,Á,½ PC ,ìŠO•"f fŠfAfNfZfX'¬"x,đ'a'è, ,éfvf fOf%of€  
,Ä,·BŽÀs,É,ÍDOS-Extender,ìgo32,a•K—v,Ä,·B




@Ú,μ,ÍADISC1:\BENCH\PFM686CB\PFM686.DOC,đ,²—,.,¾,³,çB

DISC1:\BENCH\PFM686CB




ft@fCf<,lfRfs[]

 **dj1src\_k.zip go32(djgpp 1.x) kitoh"Å2**

 **ftf@fCf<,lfRfs**



 **Zû~^ftfHf<f\_**

DISC1:\BENCH\DJ1SRC\_K

---



**[\$]i**

CE´i@DJ delorieŽ@@%ü•i@^É";CEö—Y(kitoh)Ž



**"à—e**

PFM686,ìŽÀs,É•K—v,Ègo32,ìŽÀsftf@fCf<,đŠÜ,pAdjgpp,ìkitoh"Å  
%ü•İfpfbfP[fW,Å,·BŽg—p•û-@,İPFM686,İREADME,đŽQ[Æ,μ,Ä,,<sup>3</sup>/<sub>4</sub>,<sup>3</sup>,çB  
,É,“A“z•z,È,Ç,ì, ,Ä,©,ç,İGPL(GNU GENERAL PUBLIC LICENSE),É],Ä,Ä,,<sup>3</sup>/<sub>4</sub>,<sup>3</sup>,çB



@Ú,μ,İADISC1:\BENCH\DJ1SRC\_K\README,đ,<sup>2</sup>—,.,<sup>3</sup>/<sub>4</sub>,<sup>3</sup>,çB

---



@Ú,μ,İADISC1:\BENCH\DJ1SRC\_K\COPYING.DJ(“~iCE i•ñ),đ,<sup>2</sup>—,.,<sup>3</sup>/<sub>4</sub>,<sup>3</sup>,çB



@Ú,μ,İADISC1:\BENCH\DJ1SRC\_K\COPYING(GNU GENERAL PUBLIC LICENSE),đ,<sup>2</sup>—,.,<sup>3</sup>/<sub>4</sub>,<sup>3</sup>,çB

PFM686, iZÅs, É•K—v, Ègo32, iZÅsftf@fCf<, ðŠÜ, pAdjgpp, ìkitoh"Å%ü•İfpfbfP[fW, Å, ·BŽg—  
p•û-@, İPFM686, İREADME, ðŽQÆ, μ, Ä,, ¾, ¾, çB  
, È, "A"z•z, È, Ç, ì, , Ä, ©, ç, İGPL(GNU GENERAL PUBLIC LICENSE), É], Á, Ä,, ¾, ¾, çB

 @Ú, μ, İADISC1:\BENCH\DJ1SRC\_K\README, ð, ²—, , ¾, ¾, çB

 @Ú, μ, İADISC1:\BENCH\DJ1SRC\_K\COPYING.DJ('~ Ç İ•ñ), ð, ²—, , ¾, ¾, çB

 @Ú, μ, İADISC1:\BENCH\DJ1SRC\_K\COPYING(GNU GENERAL PUBLIC LICENSE), ð, ²—, , ¾, ¾, çB



DISC1:\BENCH\DJ1SRC\_K

 ft@fCf<,lfRfs[]


# PFM486 Ver.1.77H • ]%œž”Å

 fC“fXfg [f<,ižÀ [s



 %œæ-ÊfCf [fW

```
Performance of 486-PC Ver1.77h(C)1992-1995 DysanKeihin
H-----H
| P54C Frequency = 19.35 MHz Machine:AT v1.77h|
| CPUID Results = GenuineIntel Fam 5 Mdl 2 Stp12 |
| Ecache Read Time =4227 ns/dword (...wait, 1mb/s)|
| Ecache Write Time =4054 ns/dword (...wait, 1mb/s)|
| Memory Read Time =7835 ns/dword (...wait, 1mb/s)|
| Memory Write Time = 752 ns/dword (...wait, 5mb/s)|
H-----H
```

 žû~^ftfHf·f\_

DISC1:\BENCH\PFM\_177H


---

 [S [i

'æžO<ž·I ž [

 “à—e


386 ^È [~·,ì x86 CPU ,đžg,Á,½ PC ,iŠO•”f [f,fš [«”\,đ’è’,·,évf [fOf%of€  
,Á,· [Bf [f,fšfo [fXfgfš [fh [Af [f,fšf%ofCfg [AŠO•”fLffffbfVf...fš [fh [AŠO•”fLffffbfVf...f  
%ofCfg, [ [«”\,đ’è’,·,é,±,Æ,³,Á,«,Ü,· [B

 [ @ [Ú,µ, [ [ADISC1:\BENCH\PFM\_177H\README.1ST,đ,²—,³,⁴,³,ç [B

---

```
Performance of 486-PC Ver1.77h(C)1992-1995 DysanKeihin
H-----H
| P54C   Frequency   = 19.35 MHz   Machine:AT  v1.77h|
|   CPUID Results   = GenuineIntel Fam 5 Mdl 2 Stp12 |
| Ecache Read Time  =4227 ns/dword (...wait, 1mb/s)|
| Ecache Write Time =4054 ns/dword (...wait, 1mb/s)|
| Memory Read Time  =7835 ns/dword (...wait, 1mb/s)|
| Memory Write Time = 752 ns/dword (...wait, 5mb/s)|
H-----H
```

386 ^È~ì x86 CPU ,đŽg,Á,½ PC ,İŠ•"f,fŠ«"\,đ'è,·,évfOf%€  
,Ä,·Bf,fŠfo[XfgfŠ[fhAf,fŠ%ofCfgAŠ•"fLffbfVf...fŠ[fhAŠ•"fLffbfVf...f  
%ofCfg,İ«"\,đ'è,·,é,±,Æ,ª,Å,«,Ü,·B

 @Ú,µ,ÍADISC1:\BENCH\PFM\_177H\README.1ST,đ,<sup>2</sup>—,·,<sup>3</sup>/<sub>4</sub>,<sup>3</sup>,çB

DISC1:\BENCH\PFM\_177H

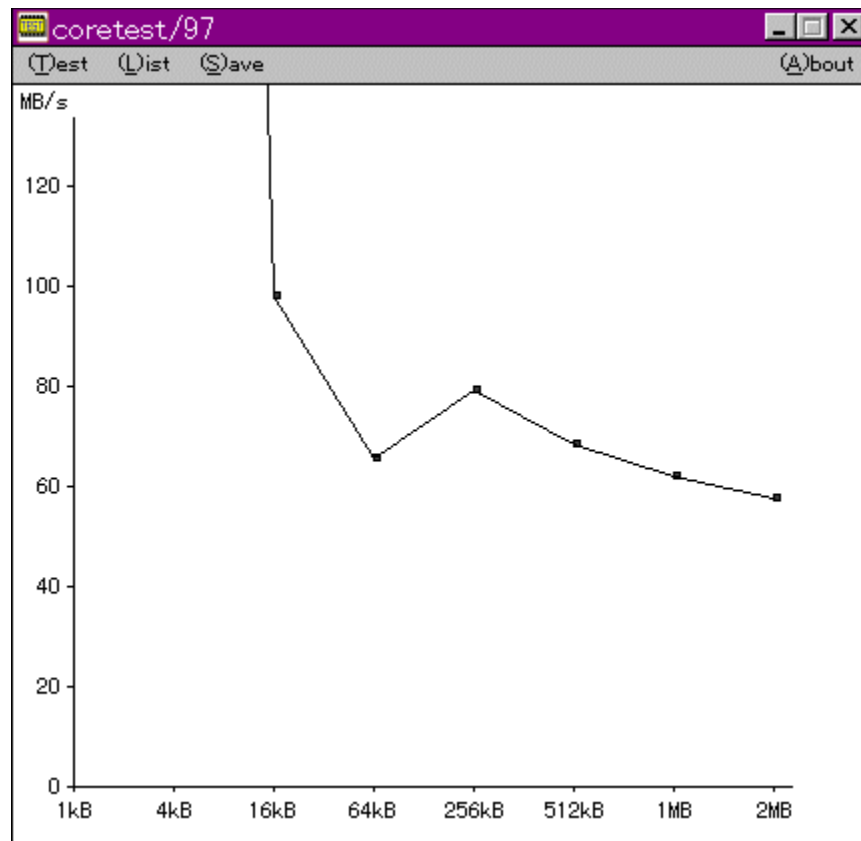
 fC“fXfg [f<,iŽÀ s

# CoreTest/97 1.01

CoreTest/97



CoreTest/97



CoreTest/97

DISC1:\BENCH\CTEST97B



CoreTest/97



'O"c<X<> Ž



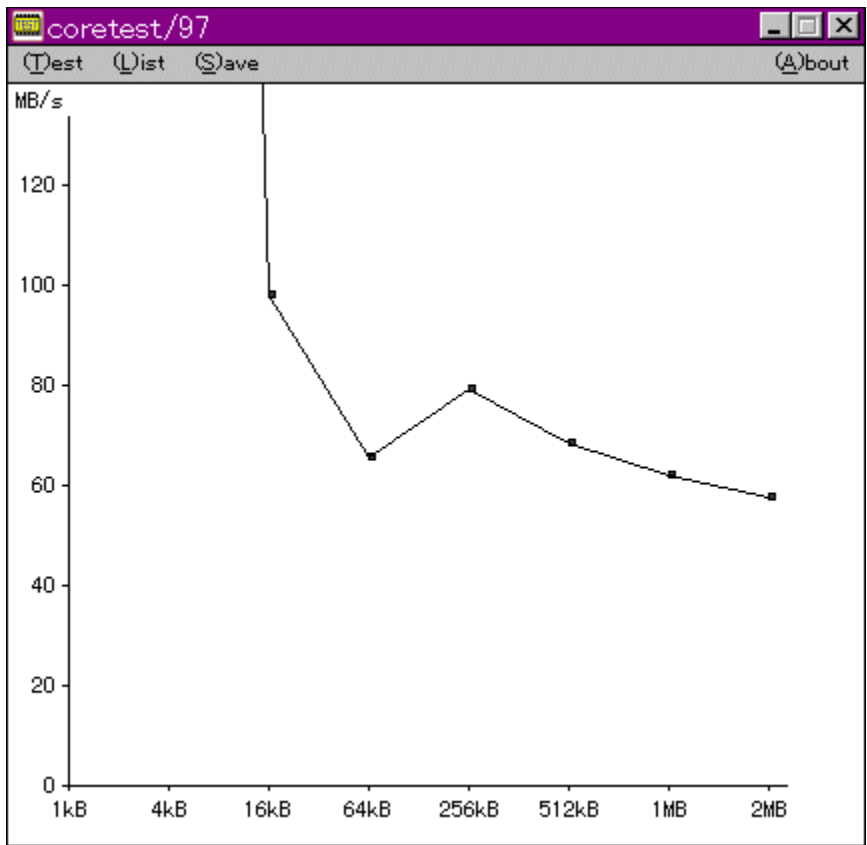
"à—e

f}fVf",lf,f,ŠfAfNfZfXfXfs[fh,đ'á'è,·,éfvf[fOf%of€,Á,·BCEv'á•",ÉVxD[i%¼'zfffofCfXfhf  
%ofCfo[j,đŽg—p,μAPentium,İrdtsc-½—ß,đ,Á,©,Á,Á³Šm,ÈŽžŠÓ'á'è,đ[s,É,Á,Á,ç,Ú,·B



@Ú,μ,ÍADISC1:\BENCH\CTEST97B\README.TXT,đ,²—,¾,³,çB

---



f}fVf“,lf,fŠfAfNfZfXfXfs[fh,đ‘a’è,·,éfvf[fOf%of€,Å,·BÆv‘a•”,ÉVxD[i%¼‘zfffofCfXfhf  
%ofCfo]j,đŽg—p,μAPentium,İrdtsc-½—β,đ,Å,©,Á,Ä³Šm,ÈŽžŠÔ‘a’è,đ[s,É,Á,Ä,ç,Û,·B



@Ú,μ,ÍADISC1:\BENCH\CTEST97B\README.TXT,đ,²—,¾,³,çB

DISC1:\BENCH\CTEST97B

 fC“fXfg [f<,iŽÀ s

# GBENCH32 2.0

GBENCH32



GBENCH32



GBENCH32

DISC1:\BENCH\GBENCH20



GBENCH32

,Ü,é, ,ç Ž



“à—e

fOf%oftfBfbfN,ì«”\,đ'è,·,évf[]fOf%of€,Å,·B32bit,ìfXfvf%ofCfjfGf“fWf”,đ—~—  
p,μ,ÄA10•bSÖ,É%œ-Ê,ì',«Š,!,đ%½%ñs,É,!,é,©•Ž!,μ,Û,·B



@Ú,μ,íADISC1:\BENCH\GBENCH20\README.TXT,đ,<sup>2</sup>—,.,<sup>3</sup>/<sub>4</sub>,<sup>3</sup>,çB

---





fOf%oftfBfbfN,ì«”\,ð’è,·,éfvf[]fOf%of€,\,·B32bit,lfXfvf%ofCfGfGf“fWf”,ð—~—  
p,μ,ÄA10•bŠÖ,É%œ-Ê,ì’,«Š,!,ð%½%ñs,È,!,é,©•\Ž!,μ,Ú,·B



@Ú,μ,ÍADISC1:\BENCH\GBENCH20\README.TXT,ð,<sup>2</sup>—,.,<sup>3</sup>/<sub>4</sub>,<sup>3</sup>,çB

DISC1:\BENCH\GBENCH20

 fC“fXfg [f<,iŽÀ s


 WinGfpftfH [f}f“fXfefXfg GTEST ver.1.2

 fC“fXfg [f<,ižÀ s



 %œ-ÊfCf [fW



 žû~^ftfHf<f\_

DISC1:\BENCH\GT12



[S]i

,Ü,é, ,ç Ž



“à—e

WinG,lfppftfH[f}f“fX,đ‘a’è,·,éfvf[fOf%of€,Å,·B—L-¼,Èfxf“f`f}][fNfefXfg,Å, ,é3DBENCH  
,Æ“~,¶,æ,æ,ÈCEXCEü,ì”“l,đo,μ,Ü,·B



@Ú,μ,·[ADISC1:\BENCH\GT12\README.TXT,đ,²—,.,¾,³,çB

---



WinG, ìfpftfH[]f}f“fX, ð‘à’è, ., éfvf[]fOf%of€ , Å, ·[]B—L-¼, Èfxf“f`f}[]fNfefXfg, Å, , é3DBENCH, Æ“` , ¶,  
æ, x, ÈCEXCEù, ì[]“l, ð[]o, µ, Ü, ·[]B



[]@[]Ú, µ, .í[]ADISC1:\BENCH\GT12\README.TXT, ð, 2—, ., ¾, ¾, ¶[]B

DISC1:\BENCH\GT12



 fC“fXfg [f<,iŽÀ s

# VTBENCH DOS/V Text Video Benchmark Ver. 1.2

fCf“fXfg[]f<,ižÀ[]s



%oæ-ÊfCf[]fW

Mode	Text Output (Words/Sec)	Scrolling (Lines/Sec)	Proprietary Eval (Points)
Direct	189272	2228	21084
BIOS	113563	19495	110695

この結果は「参考」程度にしてください  
結果については責任を負えません(^\_^;)   
[F]で結果をファイルに出力します。  
その他のキーで終了 [ ]



Zû~^ftfHf\_f\_

DISC1:\BENCH\VBENCH12



[]\$[]i

-k'°•q•F Ž[]

<http://www.cadin.or.jp/users/baxsoft/>



“à—e

DOS/V,lfefLjXfg%œ-ÊŠÖEW,lfXfs[fh,ðEV<sup>a</sup>,.évf[fOf%of€,Å.·BŠeŽÍ,lfhf%ofCfo,ðŽg  
—p,μ,½,Æ,«,É,Ç,ì,,ç,ç,ì%œ-Ê%ň,è,lfXfs[fh,ªo,Á,ç,é,©,ð‘Š‘Í‘I,ÉEV<sup>a</sup>,μ,Û,·B•¶Žš•\  
Ž!AfXfNf[f<,Æ,à,ÉfrffI BIOS,Æ%¼‘zVRAM’¼Û‘,«ž,Ý,ì—¼•û,ÁEV<sup>a</sup>,Á,«,Û,·B



@Ú,μ,ÍADISC1:\BENCH\VBENCH12\VTBENCH.DOC,ð,<sup>2</sup>—,.,<sup>3</sup>/<sub>4</sub>,<sup>3</sup>,çB

---

Scroll BIOS VTBENCH 1.2					Scroll BIOS T.Kitamura				
1	獵リ	獵リ	獵リ	高リ					
2	獵リ	獵リ	獵リ	高リ					
3	獵リ	獵リ	獵リ	高リ					
4	獵リ	獵リ	獵リ	高リ					
5	獵リ	獵リ	獵リ	高リ					
6	獵リ	獵リ	獵リ	高リ					
7	獵リ	獵リ	獵リ	高リ					
8	獵リ								
9	獵リ								
10	獵リ								
11	獵リ								
12	獵リ								
13	獵リ								
14	獵リ								
15	獵リ								
16	獵リ								
17	獵リ								
18	獵リ								
19	獵リ								
20	獵リ								
21	獵リ								
22	獵リ								
23	獵リ								

VTBENCH V-TEXT Benchmark by T.Kitamura				
ビットモード' 03h 80字*25行 640*480				
表示フォント 半角:8*19 全角:16*19				

	Direct	BIOS
文字出力	189272字/秒	113563字/秒
スクロール	2228行/秒	19495行/秒
独断偏見評価	21084点	110695点

この結果は「参考」程度にしてください  
結果については責任を負えません(^\_^;)  
[F]で結果をファイルに出力します。  
その他のキーで終了 [■]

19	獵リ
20	獵リ
21	獵リ
22	獵リ
23	獵リ

F01	F02	F03	F04	F05	F06	F07	F08	F09	F10	F11	F12
-----	-----	-----	-----	-----	-----	-----	-----	-----	-----	-----	-----

DOS/V,lfefLjXfg%œ-ÊŠÖÆW,lfXfs[fh,ðÆv<sup>a</sup>,;éfvj[fOf%œf€,Å,·BŠeŽí,lfhf%ofCfo,ðŽg—  
p,μ,½,Æ,«,É,Ç,Ì,,ç,ç,ì%œ-Ê%œñ,è,lfXfs[fh,<sup>a</sup>o,Å,ç,é,©,ð‘Š‘Í“l,ÉÆv<sup>a</sup>,μ,Û,·B•ŕŽš•\  
Ž!AfXfNf[fç,Æ,à,ÉfrffI BIOS,Æ%¼‘zVRAM’¼Ú‘,«ž,Ý,ì—¼•û,ÅÆv<sup>a</sup>,Å,«,Û,·B



@Ú,μ,·ÍADISC1:\BENCH\BENCH12\VTBENCH.DOC,ð,<sup>2</sup>—,·,<sup>3</sup>/<sub>4</sub>,<sup>3</sup>,çB

DISC1:\BENCH\BENCH12

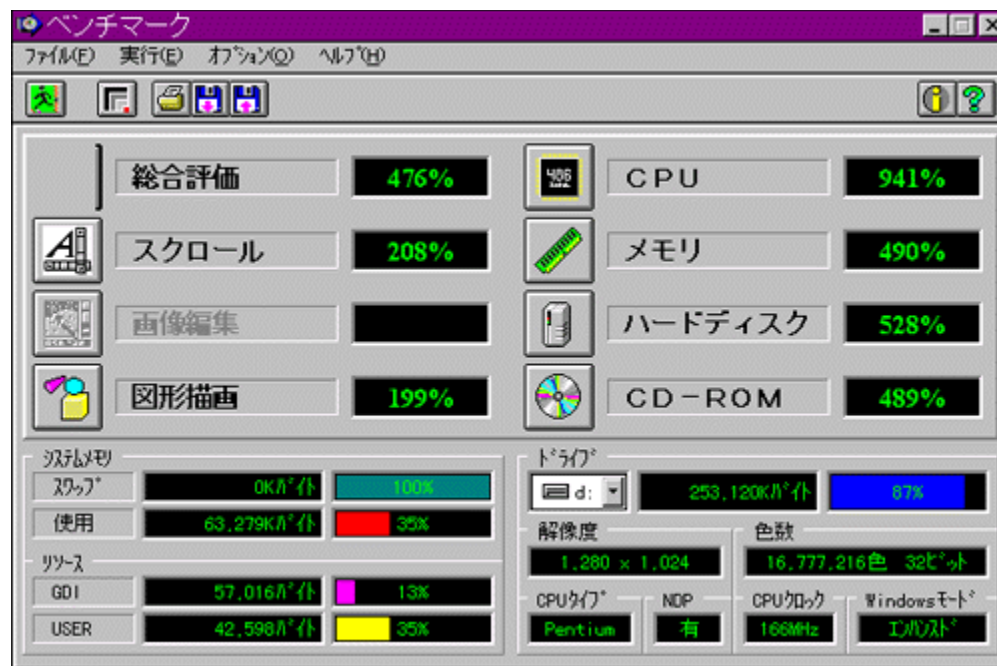
 fC“fXfg [f<,iŽÀ s

Š”Ž®%oĩŽĐf[]f<fR f[]f<fRfxf“f`f}[]fN

fC“fXfg[]f<,ižA[]s



%oæ-ÊfCf[]fW



Žû~^ftfHf<f\_

DISC1:\BENCH\MELCO



[]S[]i

Š”Ž®%oĩŽĐf[]f<fR  
<http://www.melcoinc.co.jp/>

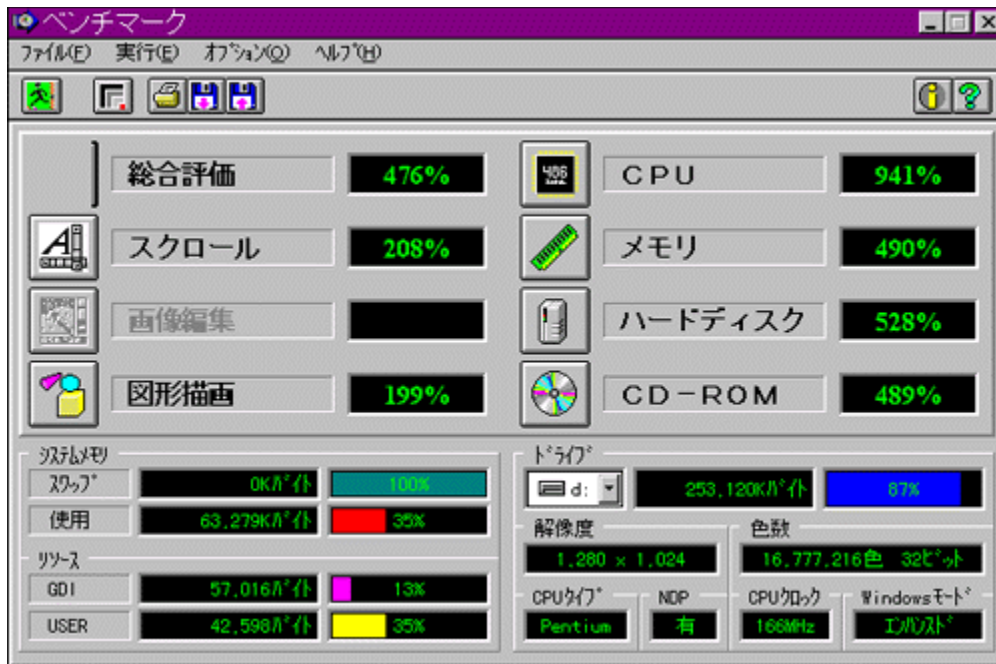




“à—e

ŠeŽü•Ó'•'u,ìfpftfH[f}f“fX,đ'è,·,évf[fOf%of€,Å,·BfXfNf[f·A%œ'œ•`ŽÊA  
CPUAf[f,fŠAfñ[fhfffBfXfNACD-ROM,ì«”\,đ'è,·,é,±,Æ,ª,Å,«,Ü,·B  
'^Ó:Window95,đ,²Zg—p,ìê‡A'è't,ÉfL[f{[fh,“,æ,Ñf}fEfX,ÍŽg—p,μ,È,¢  
,Å,,¾,³,¢B

---



ŠeŽü•Ó'•'u,İfpftjH[f}f“fX,ð‘è,·,éfvf[fOf%of€,Å,·BfXfNf[f<A%œ‘œ•`ŽÊA  
CPUAf[f,fŠAfN[fhfffBfXfNACD-ROM,İ<“\,ð‘è,·,é,±,Æ,ª,Å,«,Ü,·B  
'^Ó:Window95,ð,²Žg—p,İê‡A‘è‘t,ÉfL[f{[fh,¨,æ,Ńf}fEfX,ÍŽg—p,μ,È,ç,Å,-  
,¾,³,çB

DISC1:\BENCH\MELCO

 fC“fXfg [f<,iŽÀ s

Š”Ž®%oiŽĐ fAfC□Efl□□Efl□lf^<@Ší fAfvfŠfxf“f`

fC“fXfg□lf<,ižÀ□s



%oæ-ÊfCf□□lfW



Žú~^ftfHf<f\_

DISC1:\BENCH\WKAPB



□S□i

Š”Ž®%oiŽĐ fAfC□Efl□□Efl□lf^<@Ší  
<http://www.iodata.co.jp/>




“à—e

Windows 95 ě, ĀŽÀŮ, ĚfAfvfŠfP[fVf†], đŽÀ[s, μ, ½, Æ, «, ìfVfXfef€«”\, đ•]‰ı, ., éfvfƒOf  
‰f€, Ā, ·BfAfvfŠfP[fVf†], đŽg—p, μ, Āfxf“f`f} [fN, đŽæ, é, ½, ßAf`f...  
[fjff“fO, đ[s, Ě, ƒê†, ĚŽÀŮ, ìŽg—  
pŽž, Ě, Ç, ê, ¾, ~“x, ĀEü ě, ., é, ì, ©, ĀA”ăŠr“l•ă, ©, è, â, ., ., Ě, Ā, Ā, †, Ů, ·B  
‘ă’è€-ŮF“d’ì, Āfxf“f`f} [fN Af†f, ‘, Āfxf“f`f} [fN AfyfCf“fg, Āfxf“f`f} [fN

---

アプリベンチ

 クリップボードへコピー	 テキストファイルで保存	 測定項目の編集
 測定項目の保存	 測定項目の呼び出し	 測定精度の選択
 警告の設定	 表示位置の設定	 表示モードの選択
 ヘルプトピックの検索	 バージョン情報	 閉じる

 全項目の測定	13251	
 電卓でベンチマーク	6060	
 メモ帳でベンチマーク	6372	
 ペイントでベンチマーク	16063	



Windows 95 ĀŽÀÛ,ÉfAfvfŠfP[fVf#f",đŽÀ[s,μ,½,Æ,«,lfVfXfef€«"\\,đ•]‰º,·,éfvf[fOf%of€  
,Ā,·BfAfvfŠfP[fVf#f",đŽg—p,μ,Āfxf"f`f}[]fN,đŽæ,é,½,βAf`f...  
[]fjf"fO,đ[s,È,κé#f,ÉŽÀÛ,lŽg—pŽž,É,Ç,ê,¾,~'~"x,ªEüã,·,é,ì,©,ªA"äŠr"l•ª,©,è,â,·,-  
,É,Ā,Ā,ç,Û,·B  
'ª`è€-ÚF"d`ì,Āfxf"f`f}[]fN[Af[]f,' ,Āfxf"f`f}[]fN[AfyfCf"fg,Āfxf"f`f}[]fN

DISC1:\BENCH\WKAPB

 fC“fXfg [f<,iŽÀ s

 Š”Ž®%öiŽĐ fAfC□Efi□[□Eff□[f^<@Ší Topic for Windows  
Ver 1.04

 ftf@fCf<,lfRfs□I



Žú~^ftfHf<f\_

DISC1:\BENCH\TOPICWIN

---



□\$□ì

Š”Ž®%öiŽĐ fAfC□Efi□[□Eff□[f^<@Ší  
<http://www.iodata.co.jp/>



“à—e

Œ»□ÝŽg—p,μ,Ä,ç,é Windows fvfxfef€,lfpftfH□[f}f“fX,đ‘à’è,μ,½,è□A<@“\,ì—L-  
³,đŒÿ□,·,éfvf□fOf%of€,Ä,·□B  
‘à’è□€-Ú□FfOf%ofTfBfbfN□AffWf^f<frfffi□Af□f,fŠ□AffBfXfNfhf  
%ofCfu□Avf□fZfbfT□Af□[fo□[f□[f<□AfTfEf“fh  
**,±,lfvf□fOf%of€,iWindows 3.1□ê—p,Ä,·□BWindows 95,Ä,í“ @□ì,μ,Ü,¹,ñ□B**

---

«»ŸŽg—p,μ,Ä,ç,é Windows fVfXfef€,lfpftfH[f}f“fX,ð‘è,μ,½,èA<@“\,ì—L-  
³,ðŸ,·,·,éfvf[fOf%of€,Ä,·B  
‘èè€-ÚFfOf%oftfBfbfN[AffWf^f<frfffi[Af[f,fŠ[AffBfXfNfhf  
%ofCfu[Afvf[fZfbfT[Afi[f<sup>o</sup>[fi[f<[AfTfEj“fh  
**,±,lfvf[fOf%of€,lWindows 3.1è—p,Ä,·BWindows 95,Ä,í“@ì,μ,Ü,¹,ñB**

DISC1:\BENCH\TOPICWIN




ft@fCf<,lfRfs[]

 **WHATIDE**

 fC“fXfg [f<,ižÀ s



 **Žû~^ftfHf<f\_**

DISC1:\BENCH\WHATIDE

---



**šì**

Tom Warren Ž



**“à—e**

DOS ä, ÅIDE, ìfn [fhfffBfXfN, ìî•ñ, ð•\Ž!, ., éfvf [fOf%of€  
, Å, . [Bfvfšf“f\_ [ [ [ Afwfbfh [ [ A1fgf%ofbfN, , 1/2, è, ìfZfNf^ [ [ AfZfNf^fofbftf@fTfCfY [A^è  
%oñ, ìš,,, èž, Ÿ, É, “, , , éfZfNf^ [ (fuf [fbfNf, [fh), ÆECCfofCfg [ , ð•\Ž!, μ, Ü, . [B

 @ [Ú, μ, , [ADISC1:\BENCH\WHATIDE, ð, 2—, , 3/4, 3, ç [B

---



DOS ä, ÅIDE, \fn [fhfffBfXfN, i i • ñ, ð • \Ž!, ., évf fOf % f€ , Å, . Bfvf Šf “f \_ [ ] “ Afwfbfh ” A1fgf  
% fbfN , , ½, è, ífZfNf ^ “ AfZfNf ^ fofbftf @fTfCfY A ^ è  
% ñ, íŠ,, èž, Ý, É, ; , , éfZfNf ^ “ (fuf fbfNf, [fh), ÆECCfofCfg ”, ð • \Ž!, µ, Ü, . B

 @Ú, µ, . í ADISC1:\BENCH\WHATIDE, ð, 2 —, , ¾, 3, ç B


DISC1:\BENCH\WHATIDE

 fC“fXfg [f<,iŽÀ s

# Quantum Data Access Time Benchmark

 ftf@fCf<,lfRfs[]I



 Zû~^ftfHf<f\_

DISC1:\BENCH\QBENCH

---



[]\$[]i

Quantum Corporation  
<http://www.quantum.com/>



“à—e

fn[]fhfffBfXfN,ìff[]f^fAfNfZfX'—“x,Æ”]’—’—“x,ð’@’è,·,éfxf“f`f}[]fNfvf[]fOf%of€,Å,·[]B

---

fn[]fhfffBfXfN,ìff[]f^fAfNfZfX'¬"x,Æ"']¬'¬"x,ð'è',·,éxf"f`f}[]fNfvf[]fOf%of€,Å,·□B

DISC1:\BENCH\QBENCH



ft@fCf<,lfRfs[]

# NAMCO HISTORY VOL.1(‘ìœ±”Å□j

fC“fXfg□[f<,ižÀ□s



%œ-ÊfCf□□[fW



Zû~^ftfHf<f\_

DISC1:\BENCH\NAMCO



□\$□ì

Š”Ž@%œižĐfif€fR  
<http://www.namco.co.jp/>





“à—e

%o□"N,ì-¼□ifQ□[f€,δ□W,ß,½NAMCO HISTORY VOL.1,ì'ìCE±"Å□ifxf"f`f}□[fN<@"\  
 ,Å,«□j,Å,·□BMAPPY□AXEVIIOUS,ªfvfCE□[,Å,«,Ü,·□BfvfCE□[+□AfA□[fP□[fhf}fvf",.đ100%  
 ,Æ,μ,Å□A,Ç,ì"ö"x,ìfpftfH□[f}f`fX,ª□o,Å,ç,é,©fp□[fZf"fg•\  
 Ž,³,ê,é,½,ß□AŠÈ'P,Èfxf"f`f}□[fN,Æ,μ,Å,²Žg—p,É,É,é,Ü,·□B  
 ,É,"-{'ìCE±"Å,í□A5•ª,ì,YfvfCE□[,Å,«,é,æ,α,É,È,Å,Å,ç,Ü,·□B



□@□Ú,μ,·□ADISC1:\BENCH\NAMCO\README.TXT,đ,²—,·,¾,³,ç□B

---



%o" N, i-¼ ifQ [f€ , ð W, ß, ½ NAMCO HISTORY VOL.1, i' i€ ± " Å ifxf " f` f } [fN < @ " \  
, Å, « j, Å, · BMAPPY AXEVIUS, afvf€ [ , Å, «, Ü, · Bfvf€ [ ' + AfA [fP [fhf} fv f " , ð 100%  
, Æ, µ, Å A, Ç, i' ö " x, ifpftfH [f} f " fX, a o, Å, ç, é, © fp [fZf " fg • \  
Ž, i, ³, é, é, ½, ß AŠ È ' P, È fxf " f` f } [fN, Æ, µ, Å, ² Ž g — p, È, È, è, Ü, · B  
, È, " - { ' i€ ± " Å, i A5 • a, i, Yfvf€ [ , Å, «, é, æ, x, È, È, Å, Å, ç, Ü, · B



@ Ú, µ, , í ADISC1:\BENCH\NAMCO\README.TXT, ð, ² —, , ¾, ³, ç B

DISC1:\BENCH\NAMCO

 fC“fXfg [f<,iŽÀ s

# testbat.exe - test battery performance version 0.21

testbat.exe



testbat.exe

```
testbat.exe - test battery performance version 0.21
Copyright (c) 1994, 1995 Pierre. (Kazuhiro Inoue), All rights reserved.
```

```
Now ready to execute battery test.
Please disconnect external power supply.
BatteryPerformance test is started!
```

0	03:41:38	99
1	03:42:38	97
2	03:43:38	95
3	03:44:38	93
4	03:45:38	90
5	03:46:38	88
6	03:47:38	86
7	03:48:38	84
8	03:49:38	82

03:50:25



testbat.exe

DISC1:\BENCH\TESTBAT

---



testbat.exe

^ä"V ä ~a OŽ



“à—e

fm[fjgfpf\frf“,)fofbfefšž±žžšô,đ‘a’è,:éfxf“f`f}[[fNfvf[]fOf%of€,Å,·[]B



@Ú,μ,íADISC1:\BENCH\TESTBAT\TESTBAT.DOC,đ,<sup>2</sup>—,.,<sup>3</sup>/<sub>4</sub>,<sup>3</sup>,ç[]B

---

```
testbat.exe - test battery performance version 0.21  
Copyright (c) 1994, 1995 Pierre. (Kazuhiro Inoue), All rights reserved.
```

```
Now ready to execute battery test.  
Please disconnect external power supply.  
BatteryPerformance test is started!
```

0	03:41:38	99
1	03:42:38	97
2	03:43:38	95
3	03:44:38	93
4	03:45:38	90
5	03:46:38	88
6	03:47:38	86
7	03:48:38	84
8	03:49:38	82

03:50:25



fm [fgfpj\frf", lfofbfefšž ±žžšô,đ'è, .éxf"f`f} [fNfvfOf%of€,Å, .B



@Ú,μ, íADISC1:\BENCH\TESTBAT\TESTBAT.DOC,đ,²—, ¾,³,çB

DISC1:\BENCH\TESTBAT



ft@fCf<,lfRfs[]

☐@f☐fjf...☐l,ìžg,ç•û ☐ 目次へ戻る

☐@^ê—•\,ìše•"•ª,đfNfŠfbfN,·,é,±,Æ,É,æ,è☐A,» ,ìf\ftfg,ì☐î•ñ,đ•\  
Ž!,μ,½,èçf"fxfg☐[f<,đ☐s,É,α,±,Æ,ª,Â,« ,Ü,·☐B

☐@Še•"•ª,É,Â,ç,Ä,ì☐à-¾,đ,²—,É,È,è,½,ç%ó☐Š,đfNfŠfbfN,μ,Ä,,¾,³,ç☐B



f\ftfgfEfFfAf^fCf: ☐

☐iŽÓ¥'ñ<ŸE³-¼

☐@☐@☐@☐@http:www.impress.co.jp/

,±,ìf\ftfgfEfFfA,ÌŠT-v,Ä,·



"à-e



ì«Ü

%œ-Ê

²Ý½

,±,ìf\ftfgfEjFfA,ìÐ%ôî•¶,ð•\Ž|,³,ê,Û,-□B

,±,ìf\ftfgfEjFfA,<sup>a</sup>ŽÀ□s,<sup>3</sup>,ê,<sup>1/2</sup>Žž,ì%øæ-ÊfCf□□[fW,<sup>a</sup>•\Žì,<sup>3</sup>,ê,Ü,·□B

,±,ìfvtfgfEjFfA,ªŽû~^,³,ê,Ä,ç,éftfHfçf\_¼,ð•\Žì,³,ê,Û,·□B,³,ç,ÉftfHfçf\_¼fNfŠfbfN,·,é,Æ□A•\  
Žì,³,ê,Ä,ç,éftfHfçf\_ªŠj,©,ê,Û,·□B  
□@Žg,çŠµ,ê,½fc□[fç,Ä,ìfCf“fXfg□[fç,â□AfCf“fXfg□[fç‘O,É•t’®,ìhfLf...f□“fgftf@fCfç,ð,²—  
,É,É,é□é□‡,É•Ö—,Ä,·□B

fCf“fXfg[]f<,đs,ꝑ^x,lf{f^f“,đ•Žl,μ,Û,·B  
,³,ç,Éf{f^f“,đNfŠfbfN,·,é,ÆAfCf“fXfg[]f<,ªs,È,í,ê,Û,·B



fZfbfgfAfbfvfvf[]fOf%of€,ª<N“® ,µf\ftfgfEfffA,lfCf“fXfg[]f<,ªs,È,í,ê,Û,·B



fpf[]fCf“fXfg[]f%o,Å\ftfgfEfffA,ªfCf“fXfg[]f<,³,êfvf[]fOf  
%of€fOf<[]fv,ì[]-[]AfXf^[]fgf[]jf...[][.Ö,ì“o~^,đs,È,í,ê,Û,·B



ftf@fCf<,ªCD-ROM,©,çRfs[][,³,ê,Û,·B



fNfŠfbfN,·,é,ÆA,±,lf\ftfg,ìD%oîfy[fW,a•\Ž|,³,ê,Ü,·B

fNfŠfbfN,·,é,ÆA,±,lf\ftfg,ìD%oîfy[fW,<sup>a</sup>·\Ž|,<sup>3</sup>,ê,Ü,·B

fjftfgfEjFfA,ìižÒ,â'ñ<ÿ,à,Æ,ìfCf“f^[]fjfbfg[]ă,ìfz[]f€fy[]fW,ìURLfAfhfCEfX,Å,·[]B,±,±,  
,đfNfŠfbfN,·,é,Æ[]AWWWfuf%ofEfU,â<N“@,³,êižÒ,ìfz[]f€fy[]fW,ÉfWfff“fv,μ,Û,·[]B

V<K E X V Ž ů ~ ^ Ž í • Ê , ð Ž ! , μ , Ů , •





-{ Ž % Ž ů ~ ^ , ð } f t f g , Å , • B




' O % ñ Ž ů ~ ^ Ć ã A f o [ f W f † f " f A f b f v , μ , ½ } f t f g , Å , • B

fCf“fXfg□[f<—pf{f^f“

 **SETUP** fZfbfgfAfbfvfvf□fOf%of€,^<N“ @ ,µf\ftfgfEfFfA,lfCf“fXfg□[f<,^□s,È,í,ê,Û,·□B

 fCf“fXfg□[f%o,Åf\ftfgfEfFfA,ðfCf“fXfg□[f<,µfvf□fOf%of€fOf<□[fv,ìì□-□AfXf^□[fgf□fjf...  
□[.Ö,|“o~^,^□s,È,í,ê,Û,·□B

 ftf@fCf<,^CD-ROM,©,çfRfs□[.,^,ê,Û,·□B



**fCf“fXfg[]f<-pf{f^f“**



fZfbfgfAfbfvfvf[]fOf%of€,<sup>a</sup><N“® ,μf\  
ftfgfEfffA,lfCf“fXfg[]f<,<sup>a</sup>s,È,í,ê,Ü,·[]B  
fCf“fXfg[]f%o,Åf\ftfgfEfffA,đfCf“fXfg[]f<,μfvf[]fOf  
%of€fOf<[]fv,ì[]-[]AfXf^[]fgf[]jf...[][,Ö,í“o~^,<sup>a</sup>s,È,í,ê,Ü,·[]B  
ftf@fCf<,<sup>a</sup>CD-ROM,©,çfRfs[][,<sup>3</sup>,ê,Ü,·[]B



**fhfLj...f[]f“fg•\Ž!f{f^f“**



fhfLj...f[]f“fgftf@fCf<,ì“à—e,đ[]ê—pfrf...[]lfA,Å•\Ž!,μ,Ü,·[]B





