

WARNING - FIELD ALERT

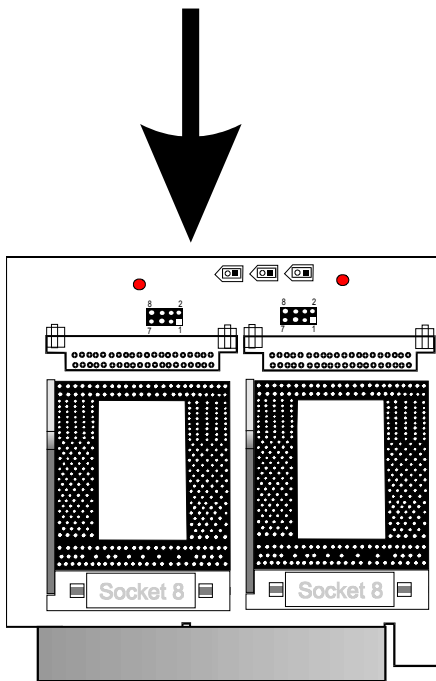
To: ALL GOLIATH USERS

TO AVOID SERIOUSLY DAMAGING YOUR GOLIATH SYSTEM WHEN YOU POWER IT ON, READ THE FOLLOWING INSTRUCTIONS CAREFULLY.

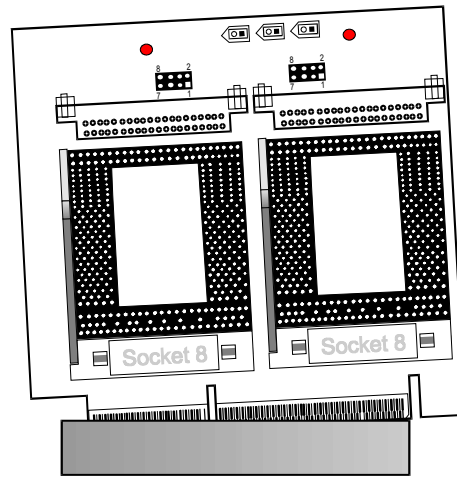
Step 1

Insert the Goliath CPU Card fully into the CPU socket. Press the CPU Card straight down firmly, so that the CPU Card edge is properly seated fully and completely inside the CPU Card connector. The CPU Card should be seated parallel to the Goliath baseboard and should **NOT** be at an angle.

Press straight down



Correct installation



Incorrect installation

Step 2

Check for shorts between +12V and ground on the P3 power connector. The +12V and ground pins can be identified by looking at the P3 pinout printed on the Goliath baseboard next to P3. If there is a short, re-seat the CPU Card until the short is eliminated.

Caution

Do not turn the power on if the +12V line is shorted to ground.

Step 3

When you are certain that there is no short, tighten the CPU Card holding screws.

Step 4

Check for a short between +12V and ground once again. If a short exists, do not turn the power on.

Call American Megatrends technical support at 770-246-8645.