

{button i½Ki½Ci½h,PI(`NIMINT.HLP',`NIM\_INET\_INTRO\_OUT\_GUIDE')}  
□Å□%o,É,“Ç,Ý,,¾,¾,ç □ifCf“f^□[flfbfg□Ú'±,ì,½,ß,É□]

HyperROAD,ðŽg,Á,ÄNIFTY SERVE,É□Ú'±,·,é,Æ□A□qWWWfuf%ofEfU□[□rf{f^f“□i  
□j,ðfNfŠfbfN,·,é,¾,¾,~ ,ÅfCf“f^□[flfbfg,É□Ú'±,μ,Äfz□[fεfy□[fW,ÉfAfNfZfX,·,é,±,Æ,ª,Å,«,Ü,·□B

 **NIFTY MANAGER, ©,çfCf“f^□[flfbfg,É□Ú'±,·,é,É,í**

ŽÄ□Ú,ì□Ú'±•û-@□i'€□ìŽè□#□j,í□A,±,ìfwf<fv,ìfgfsfbfN□ufCf“f^□[flfbfg,É□Ú'±,·,é□v,É□',©,è,Ä,ç  
,Ü,·□i%oæ-Ê%oE□ä,ì□qfKfCfh□rf{f^f“,ðfNfŠfbfN,μ,Ä□A□ufCf“f^□[flfbfg,É□Ú'±  
,·,é□v,ðfNfŠfbfN,μ,Ä,,¾,¾,ç□□B

NIFTY MANAGER, ©,çfCf“f^□[flfbfg,É□Ú'±,·,é•û-@,í□AZÿ,ì,Æ,“,è,Ä,·□B

1. fAfNfZfXf|fCf“fg,ÉHyperROAD,ð'íð,μ,Ü,·□B
2. HyperROAD,ðŽg,Á,ÄNIFTY SERVE,É□Ú'±,μ,Ü,·□B

 ,“Ç,Ý,,¾,¾,ç

□E HyperROAD,ðŽg,æ,Æ,«,É,í□A□Å□%o,É^è“x,¾,¾,~ f\_fCf,,f<fAfbfvflfbfgf□□[fN,ì□Ý'è,ª•K—  
v,Ä,·□B

fAfNfZfXf|

fCf“fg,ÉHyperROAD,ð'íð,·,é,Æ□AZ©“@“l,É□uf\_fCf,,f<fAfbfvflfbfgf□□[fN,ì□Ý'è□v,ª•N“®,¾,¾,è

□A□uÅp²ÓÚ±`ìßÈ`ÄÜ°,ì□Ý'è□v,Æ,ç,æf\_fCfAf□fO,ª•\Zì,¾,¾,è,Ü,·□B•\

Zì,¾,¾,è,½,ç□Af\_fCfAf□fO,ìf□fbfZ□[fW,É,μ,½,ª,ª,Ä□Ý'è,ð□s,Á,Ä,,¾,¾,ç□□B

□E □uÅp²ÓÚ±`ìßÈ`ÄÜ°,ì□Ý'è□v,Ä□Ý'è,μ,Ä,à,æ,Ü,□Ú'±,Ä,«,È,ç

,Æ,«,í□A,²Ž©•ª,Åf\_fCf,,f<fAfbfvflfbfgf□□[fN,ì□Ý'è,ð,μ,Ä,ç,½,¾,¾,•K—v,ª,è,Ü,·□B

,±,ìfwf<fv,ìfgfsfbfN□uf\_fCf,,f<fAfbfvflfbfgf□□[fN,ì□Ý'è•û-@□v,É□A□Ý'è,ì•û-@,ª□',©,è,Ä,ç

,Ü,·□B•K—v,É%ož,¶,Ä,“Ç,Ý,,¾,¾,ç□□B

□E NIFTY MANAGER, ©,çfCf“f^□[flfbfg,É□Ú'±,·,é,½,ß,É,í□AWWWfuf%ofEfU□[,ª•K—

v,Ä,·□BWWWfuf%ofEfU□[,É,Ä,ç,Ä,í□A,±,ìfwf<fv,ìfgfsfbfN□ufCf“f^□[flfbfg□Ú'±

.ìfçf“fg□v,É□A□Ý'è,ì,μ,©,½,â“üŽè•û-@,ª□',©,è,Ä,ç,Ü,·□B•K—v,É%ož,¶,Ä,“Ç,Ý,,¾,¾,ç□□B

□E ISDN,ðŽg—p,μ,Ä,ç,é,Æ,«,É,í□AfAfNfZfXf|fCf“fg,í HyperROAD64 ,ðŽg—p,μ,Ü,·□B

 **fçf“fg**

,±,ìfwf<fv,É,í□A%oæ-Ê%oE□ä,É fKfCfh ,Æ,ç,æ-¼'0,ìf{f^f“,ª,è,Ü,·□B,±,ìf{f^f“,í□AfCf“f^□[flfbfg,Ö,ì□Ú'±

,ÉŠÖ,·,éfgfsfbfN,ìf^fCfçf,ð^è—•Zì,·,é{f^f“,Ä,·□B-Ü“l,ìfgfsfbfN,ð,·,í,â,•Zì,μ,½,ç,Æ,«,É•Ö~ ,Ä,·□B

,±,ìfwf<fv,É,í□A □ufCf“f^□[flfbfg□Ú'±,ìfçf“fg□v ,Æ,ç,æfgfsfbfN,ª,è,Ü,·□Bæ¾-t,ì^Ó-i,ð'm,è,½,ç

,Æ,«,â□A,æ,Ü,□Ú'±,Ä,,¾,¾,è,ç,Æ,«,È,Ç,É,“Ç,Ý,,¾,¾,ç□□B

{button i<sub>2</sub>1/2Ki<sub>2</sub>1/2Ci<sub>2</sub>1/2h,PI(`NIMINT.HLP',`NIM\_INET\_CONNECT\_OUT\_GUIDE')}}  
fCf“f^[]f]fbfg,ÉÚ±,.,é

NIFTY MANAGER, ©,çfCf“f^[]f]fbfg,ÉÚ±,.,é,É,íAŽÿ,ìžè±,Á€ì,μ,Ü,·B



fCf“f^[]f]fbfg,ÉÚ±,.,é,É,í

1. fAfNfZfXf]fCf“fg,đHyperROAD,É,.,é

NIFTY MANAGER,đ<N“ @,μ,ÄA[]y[]Ú±[]Ý’è[]zf\_fCfAf[]fO,ÁfAfNfZfXf]fCf“fg,đHyperROAD,É,μ,Ü,·B,±,í€ì,íANIFTY SERVE,ÉÚ±,μ,Ä,ç,È,çó’Ô,Ás,ç,Ü,·B  
[]%  
,ß,ÄHyperROAD,đ’I’đ,.,é,ÆAŽ©“ @“I,É[]uf\_fCf,,f<fAfbfv]f]fbfgf[]fN,ì[]Ý’è[]v,â<N“ @,³,è[]A[]  
uÁp²ÓÚ±`ìßÈ`ÄÜ°, ,ì[]Ý’è[]v,Æ,ç,xf\_fCfAf[]fO,â•\Žì,³,é,Ü,·B•\  
Žì,³,é,½,ç[]Af\_fCfAf[]fOfEfBf“fhfE,ìf[]fbfz[]fW,É,μ,½,â,Á,Á•K—v,È[]Ý’è,đ[]s,ç,Ü,·B  
,±,ì[]uf\_fCf,,f<fAfbfv]f]fbfgf[]fN,ì[]Ý’è[]v,íA[]%o,ß,ÄHyperROAD,đŽg,æ,Æ,«,É^è“x,¾,³,`[]s,ç,Ü,·B

2. HyperROAD,ÄNIFTY SERVE,ÉÚ±,.,é

NIFTY MANAGER, ©,çfCf“f^[]f]fbfg,ÉÚ±,.,é,É,íAHyperROAD,đŽg,Á,ÄNIFTY SERVE,ÉÚ±,μ,Ü,·B  
HyperROAD,đŽg,Á,ÄNIFTY SERVE,ÉÚ±,.,é,íAwwwfuf  
%ofEfu[]f,ÄfCf“f^[]f]fbfg,ìfz[]f€fy[]fW,ÉfAfNfZfX,.,é,±,Æ,â,Á,«,Ü,·B

Ú,μ,ç€ìžè±,íA,»,è,¼,è,ìžè±,ì€-Ú,đNfSfbfN,μ,Ä,“Ç,Ý,,¾,³,çB



Ú±,đ[]I—¹,.,é,É,í

1. NIFTY SERVE,Æ,ìÚ±,đ[]I—¹,.,é

HyperROAD,đŽg,Á,ÄNIFTY SERVE,ÉÚ±,μ,Ä,ç,éè±,Á,àANIFTY SERVE,Æ,ìÚ±,đ[]I—¹,.,é,Æ,«,ÉAŽ©“ @“I,É[]uf\_fCf,,f<fAfbfv]f]fbfgf[]fN[]v,đ[]I—¹,.,é,±,Æ,â,Á,«,Ü,·B

Ú,μ,ç€ìžè±,íAŽè±,ì€-Ú,đNfSfbfN,μ,Ä,“Ç,Ý,,¾,³,çB



,“Ç,Ý,,¾,³,ç

E []A[]%o, ©,çNIFTY MANAGER,âfCf“fXfg[]f<,³,é,Ä,ç,éfp]fRf“ ,)è±,íA[]%o,ß,ÄNIFTY MANAGER,đ<N“ @,μ,½,Æ,«,É[]uf\_fCf,,f<fAfbfv]f]fbfgf[]fN,ì[]Ý’è[]v,â<N“ @,μ,Ü,·B,±,ì,Æ,«,É•K—v,È[]Ý’è,đ,μ,Ä,ç,é,È,çAHyperROAD,đ’I’đ,μ,Ä,à[]uf\_fCf,,f<fAfbfv]f]fbfgf[]fN,ì[]Ý’è[]v,í<N“ @,μ,Ü,¹,ñB

E NIFTY

MANAGER,đfCf“fXfg[]f<,μ,½,Æ,«,É,à[]A[]uf\_fCf,,f<fAfbfv]f]fbfgf[]fN,ì[]Ý’è[]v,â<N“ @,μ,Ü,·B,±,ì,Æ,«,É[]Ý’è,μ,Ä,ç,é,È,çAHyperROAD,đ’I’đ,μ,Ä,à[]uf\_fCf,,f<fAfbfv]f]fbfgf[]fN,ì[]Ý’è[]v,í<N“ @,μ,Ü,¹,ñB



fqf“fg

Ú,μ,ç€ìžè±,íA,±,ìfwf<fv,ì%œ-È%oE[]ä,É, ,éqfKfCfh[]rf{f^f“,đNfSfbfN,μ,ÄA“Ç,Ý,½,ç€ìžè±,ìgfsf b]Nf^fCf]g<,đNfSfbfN,μ,Ä,à“Ç,þ,±,Æ,â,Á,«,Ü,·B

**{ button i½K½Ci½h,PI('NIMINT.HLP','NIM\_INET\_CONNECT\_ODR1\_GUIDE')}**  
**fAfNfZfXf|fCf“fg,δHyperROAD,É,·,é**

NIFTY MANAGER,δ<N“® ,μ,Ä□A□y□Ú±□Ý'è□zf\_fCfA□fO,ÄfAfNfZfXf|  
 fCf“fg,δHyperROAD,É,μ,Ü,·□B

,±,ì'€□i,í□ANIFTY SERVE,É□Ú±,μ,Ä,ç,È,ç□ó'Ô,Ä□s,ç,Ü,·□B□Ú±,μ,Ä,ç,É,È,ç□A□æ,ÉNIFTY  
 SERVE,Æ,ì□Ú±,ð□l—<sup>1</sup>,μ,Ä,,<sup>3</sup>/<sub>4</sub>,<sup>3</sup>,ç□B

□%□

,ß,ÄHyperROAD,δ'ì,δ,·,é,Æ□AZ©“®“l,É□uf\_fCf,,f<fAfbfvf|fbfgf□□[fN,ì□Ý'è□v,ª<N“®,<sup>3</sup>,é□A□uÀb²Ô  
 Ú±`ìßE`ÄÜ°,ì□Ý'è□v,Æ,ç,xf\_fCfA□fO,ª•\Zì,<sup>3</sup>,é,Ü,·□B•\

Zì,<sup>3</sup>,é,½,ç□Af\_fCfA□fO,ìf□fbfZ□[fW,É,μ,½,ª,Ä,Ä•K—v,È□Ý'è,ð□s,Ä,Ä,,<sup>3</sup>/<sub>4</sub>,<sup>3</sup>,ç□B

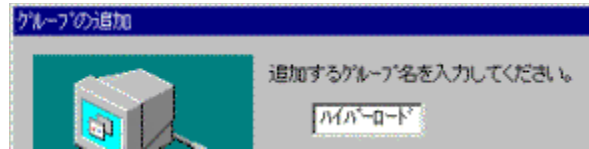


**fAfNfZfXf|fCf“fg,ÉHyperROAD,δ'ì,δ,·,é,É,í**

**,Ü,·□A□Ú±□Ý'è□fO<□[fv,δ□V,μ,□i,è,Ü,·**

1. NIFTY MANAGER,ì□mf|fvfVf“□nf□fj...□[ ,δfNfŠfbfN,μ,Ä□A  
 □m□Ú±□Ý'è□n ,δfNfŠfbfN,μ,Ü,·□B
2. □y□Ú±□Ý'è□zf\_fCfA□fO ,ªŠJ,«,Ü,·,©,ç□A  
 □q,ßÜ°ìß'Ç%□Á□i,s□j□rf{f^f“ ,δfNfŠfbfN,μ,Ü,·□B
3. □y,ßÜ°ìß,ì'Ç%□Á□zf\_fCfA□fO ,ªŠJ,«,Ü,·,©,ç□A  
 □Ú±□Ý'è□fO<□[fv-¼,δfL□[f□[fh,©,ç“ü—í  
 □Ú±•ü-@,Æ,μ,Ä□u±,¾½ìß²YÄ,Ä,ì□Ú±,ð—~—p,·,é□v ,δ'ì,δ,μ,Ä□A  
 □qŽY,Ö□rf{f^f“ ,δfNfŠfbfN,μ,Ü,·□B

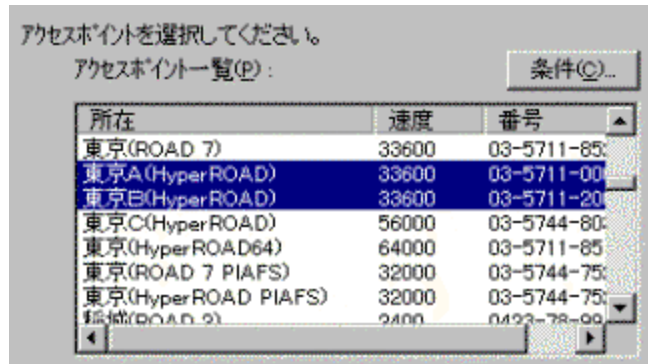
**“ü—í—á**



□Ú±□Ý'è□fO<□[fv-¼,íŽ©—R,É•t,·,é,±,Æ,ª,Ä,«,Ü,·□B,í,©,è,â,·,ç-¼'Ô  
 □i,½,Æ,ì,í□ufnfCf□[f□□[fh□v□j ,É,·,é,Æ,æ,ç,Ä,μ,â,æ□B

4. fAfNfZfXf|fCf“fg,ì'ì,δ%□æ-É ,ªŠJ,«,Ü,·,©,ç□A  
 ,`<ß,ìHyperROAD,ìfAfNfZfXf|fCf“fg ,δf}fEfX,ÄfNfŠfbfN,μ,Ä'ì,ñ,Ä□A  
 □qŽY,Ö□rf{f^f“ ,δfNfŠfbfN,μ,Ü,·□B

**'ì,δ—á**



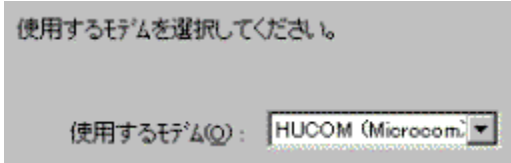
fAfNfZfXf|  
 fCf“fg□i=HyperROAD□j,δ•i□'ì,δ,μ,½□è□#□A□qŽY,Ö□rf{f^f“ ,δfNfŠfbfN,·,é,Æ□Af\_fCf,,f<,  
 ·,é□#“Ô,δŠm“F,·,é%□æ-  
 É,ªŠJ,«,Ü,·□Bf\_fCf,,f<·,é□#“Ô,δŠm“F,Ü,½,í•ï□X,μ,Ä□A□qŽY,Ö□rf{f^f“ ,δfNfŠfbfN,μ,Ä,-

,¾,³,ç□B

HyperROAD,ÆHyperROAD^ÈŠO,lfAfNfZfXfJfCf"fg□iROAD7,È,Ç□j,ð□-□Ý,μ,Ä'I'ð,·,é,±,Æ,Í,Å,«,Ü,¹,ñ□BHyperROAD,¾,³,ð'I'ð,μ,Ä,,¾,³,ç□B

- 5. f,fff€,,ì'I'ð%œ-Ê ,²ŠJ,«,,Ü,·,©,ç□A  
Žg—p,·,éÓÄpÑ ,ðf}fEfX,ÅfNfŠfbfN,μ,Ä'I,ñ,Å□A  
□qŽŸ,Ö□rf{f^f" ,ðfNfŠfbfN,μ,Ü,·□B

**'I'ð—á**

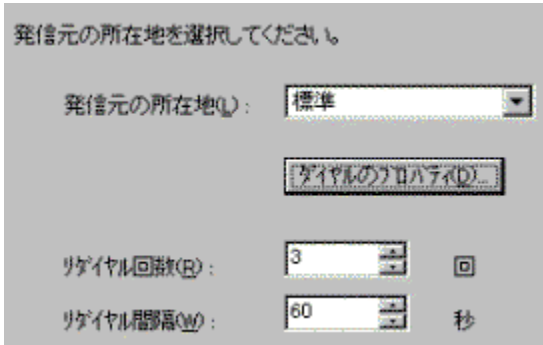


Žg—p,·,é,f,fff€,²^ê——

,É,È,ç□ê□#,í□AWindows95,lfRf"fg□□[f:fpflf<,©,ç□uÓÄpÑ□v,ð'I'ð,μ,Ä□yÓÄpÑ,ììßÛÊßÄ"□zf\_fCfAf□fO,ðŠJ,ç,Ä,,¾,³,ç□B□yÓÄpÑ,ììßÛÊßÄ"□zf\_fCfAf□fO,Ä,"Žg,ç,lf,fff€,ð'Ç%œÁ,μ,Ä,,¾,³,ç□B

- 6. "□MCE³,ì□Š□Ý'n,ì'I'ð%œ-Ê ,²ŠJ,«,,Ü,·,©,ç□A  
"□MCE³,ì□Š□Ý'n  
ØÀ²ÒÙ%œñ□"  
ØÀ²ÒÙŠÒŠu ,ðf}fEfX,ÅfNfŠfbfN,μ,Ä'I,ñ,Å□A  
□qŠ®—¹□rf{f^f" ,ðfNfŠfbfN,μ,Ü,·□B

**'I'ð—á**



□%œ,ß,ÄHyperROAD,ð'I'ð,μ,½□ê□#□A□qŠ®—¹□rf{f^f" ,ðfNfŠfbfN,·,é,Æ□ANIFTY MANAGER,²□u²ÝÀ°È-Ä,ð—~—p,·,é□ê□#,íÀ²Ò×°,ì□Ý"è□i"d~b"Ó□t,ì□Ý"è□j,²•K—v,Ä,·□B□Ý"è,ð"o~^,μ,Ü,·,©□H□v,ÆZ¿-â,μ,Ä,«,,Ü,·□B□qOK□rf{f^f" ,ðfNfŠfbfN,μ,Ä,-¾,³,ç□B,±,lf□fbfZ□[fW,²•\Ž!,³,é,È,ç□ê□#,í□AZŸ,ì'€□ 12. ,Ö□i,ñ,Ä,,¾,³,ç□B

□Ú'±□Ý"è□f□□[fv,ì'Ç%œÁ,²^êŽŽ't'f,³,é□AfCf"f^□[flfbfg□Ú'±,lfZfbfgfAfbfv,²Žn,Ü,è,Ü,·

- 7. □yÀ²ÒÙ±~ìßÈ-ÄÜ°,ì□Ý"è□zf\_fCfAf□fO□if□fbfZ□[fW□j ,²ŠJ,«,,Ü,·,©,ç□A  
f□fbfZ□[fW,ð,æ,"Ç,ñ,Ä,,¾,³,ç□B  
Windows 95,ìCD-ROM,È,Ç,ð—p^Ó,μ,Ä,"«,,Ü,μ,â,□B,Ü,½□Afpf  
fRf",ì□Ä<N"® ,É"ö,!,Ä□AZÀ□s't,lfv□f□Of%œ€,², ,é,í□l,í,ç,¹,Ä,"«,,Ü,μ,â,□B  
□qŽŸ,Ö□rf{f^f" ,ðfNfŠfbfN,μ,Ü,·□B

- 8. □yÀ²ÒÙ±~ìßÈ-ÄÜ°,ì□Ý"è□zf\_fCfAf□fO□i,²'□^Ó□j,²ŠJ,,±,Æ,², ,è,Ü,·□B  
,±,lf\_fCfAf□fO□i,²'□^Ó□j,í□A,"Žg,ç,lfpfRf",ìŠÄ«« ,É,æ,Ä,Ä,í•\Ž!,³,é,Ü,¹,ñ□B\Ž!,³,é,È,~ ,é,í□AZŸ,ì'€□ 9. ,Ö□i,ñ,Ä,,¾,³,ç□B  
f□fbfZ□[fW,ð,æ,"Ç,ñ,Ä,,¾,³,ç□B

**LAN, Žg, ç, ì ê ð**

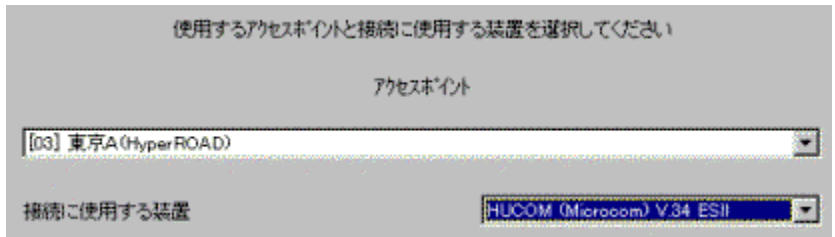
f\_fCf,,fAfbfvflfbfgf[]fN,ìY'è,ðs,È,æ,ÆACE»Y,ìLAN,ìfìfbfgf[]fN,ðŽg—p,·,é,æ, ì,À·s<i>ð,è%Å"\\<è,è,Ü,·BùuY'è,·, é(S)v,ð'ì,è,Ü,ì,ÉALAN,ìfìfbfgf[]fNSÇ—ŽÒ,É,²Š'k,,¼,³,çB

**E , , Å, É, Ü, ©, ìvfvf fofCf \_ [ , ÆCE \_ - ñ, µ, ÄfCf " f ^ [ flfbfg, ð, Žg, ç, ì ê ð**

f\_fCf,,fAfbfvflfbfgf[]fN,ìY'è,ðs,È,æ,ÆA,·,Å,ÉŽg—p't,ìWWWfuf %ofEfU[]Æf\_fCf,,f%[]AŽ © " @ " I,È~ACEg,ð,µ,È,,É,é,±,Æ,è,è,Ü,·B ^Èä,ì,±,Æ,ðSm" F,µ,Ä, ©,çAùuY'è,·,é(S)v,ð'ì,è,µ,ÄAqŽY,Örf{f^f" ,ðNfŠfbfN,µ,Ü,·B

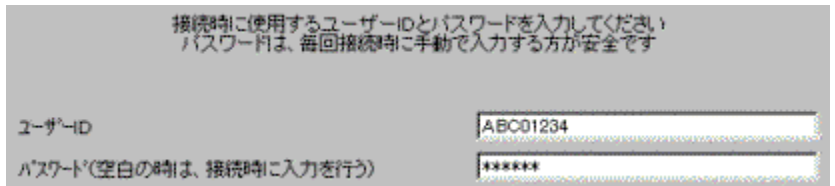
- 9. YÀ²ÔÜ± ìÈ-ÄÜ°, ìY'èzf\_fCfAf fO (fAfNfZfXfjfcf"fg), ðŠj, «, Ü, ·, ©, çA , < ß, ìHyperROAD, ìfAfNfZfXfjfcf"fg Ù'±, ÉŽg—p, ·, é'·u , ð^è—, ©, ç'l, ñ, ÅA qŽY, Örf{f^f" , ðNfŠfbfN, µ, Ü, ·B

**'ì-á**



- 10. YÀ²ÔÜ± ìÈ-ÄÜ°, ìY'èzf\_fCfAf fO (ft[]fU[]ID,ÆfpfXf[]fh), ðŠj, «, Ü, ·, ©, çA ft[]fU[]ID , ðfL[]f{[]fh, ©, ç"ü—í, µ, ÅA qŠ®—¹rf{f^f" , ðNfŠfbfN, µ, Ü, ·B

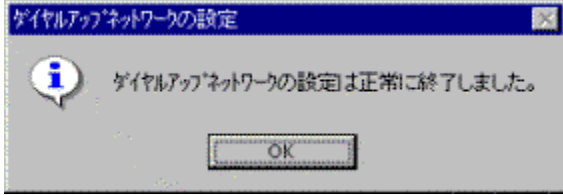
**"ü-í-á**



fpfXf[]fh,ìANIFTY SERVE,ÉÙ'±,·,é,Æ,«,É-^%ñ"ü—í,·,é,Ü,æ,^À'S,Å,·B,±,± , Å,ìA<ó" , ì,Ü,Ü,É,µ,Ä, , , Ü,æ,æ,ç,Å,µ,â,æB , Žg,ç,ìfpfRf" , ìŠÅ« , É,æ,Á,Ä,ìA,±,±,ÅŽ © " @ " I,ÉfCf" fXfg[]f<qi·K—v,Éfvf[]Of%of€ ,âtf@fCf<,ðfpfRf" , ÅŽg,ì,é,æ,æ,É,·,é,±,Æ[]j, ðŽn,Ü,é,±,Æ,è,è,Ü,·BfEfBf"fhfE,ìfbfz[] [fW,É,µ,½,²,Å,Ä,¼,³,çB fCf" fXfg[]f<,É,ìAWindows 95,ìCD-ROM,È,Ç,³·K—v,È,±,Æ,à, , è,Ü,·, ©, çA, , ç, ©, ¶, ß— p^Ó,µ,Ä, , «, Ü,µ,â,æB fCf" fXfg[]f<,è,ì,Á,½, ,Æ,ÅfpfRf" , ðÄ<N" @ , µ,È, , è,î,È,è,Ü,¹,ñBŽÀs't,ìfvf[]Of%of€ ,², , è,ì,í,ç,¹,Ä, , «, Ü,µ,â,æB

- 11. fCf" f ^ [ flfbfg Ù'±, ì, ½, ß, ìZfbfgfAfbfv, ðŽn, Ü, è, Ü, ·B Y'è^—, è,ì,è,ìAùuÀ²ÔÜ± ìÈ-ÄÜ°, ìY'è,ì³í,Éí—¹, µ, Ü, µ, ½Bv,Æ·\ Ž¹,³,è,Ü,·, ©, çA qOKrf{f^f" , ðNfŠfbfN, µ, Ü, ·B

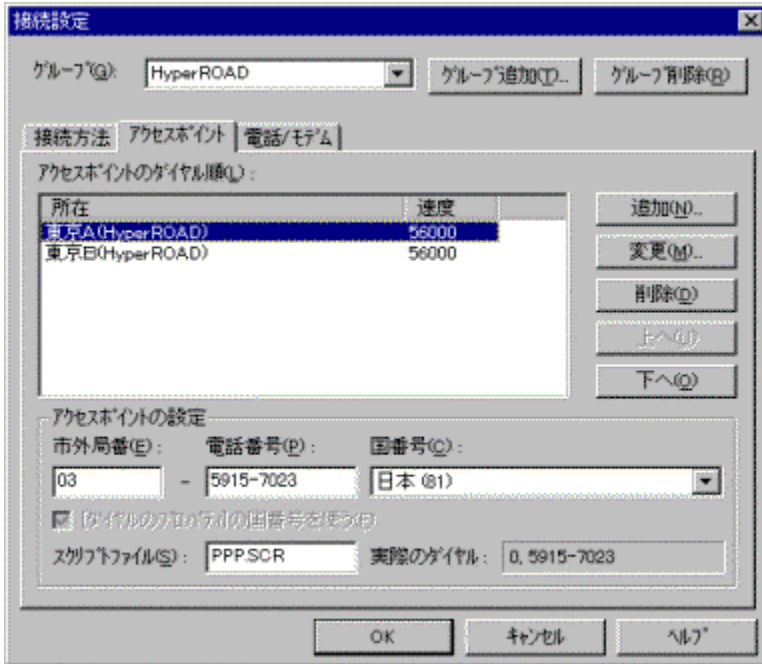
**·\Ž¹-á**



12. □y□Ú'±□Ý'è□zf\_fCfA□f□O ,É-β,è,Ü,·,©,ç□A

□m±,¾¼½îß²ÝÄ□nf^fu ,ðf}fEfX,ÅfNfŠfbfN,μ,Ä'l,ñ,Å□A

□m±,¾¼½îß²ÝÄ,ìÀp²ÔÙ□#(L)□n,Å'Ç%oÁ,μ,½fAfNfZfXfjfCf"fg ,ðŠm" F,μ,Ü,·□B



□Ý'è,μ,½fAfNfZfXfjfCf"fg,É'í,μ,Ä'Ç%oÁ□A•î□X□A□□œ,ð□s,È,α,Æ,«,í□A□mfAfNfZfXfj  
fCf"fg□nf^fu,É•\Z!,³,è,Ä,ç,é□q'Ç  
%oÁ(N)□rf{f^f"□A□q•î□X(M)□rf{f^f"□A□q□□œ(D)□rf{f^f",ðŽg—p,μ,Ü,·□B'Ç  
%oÁ,ìèè□#,ì□A□q'Ç%oÁ(N)□rf{f^f",ðfNfŠfbfN,μ,Ü,·□B•î□X,"æ,Ñ□□œ,ìèè□#,ì□A^è—  
,©,ç'í□Ú,ìfAfNfZfXfj  
fCf"fg,ð'l'ð,μ,Ä□A□q•î□X(M)□rf{f^f",Ü,½,ì□A□q□□œ(D)□rf{f^f",ðfNfŠfbfN,μ,Ä,-  
,¾,³,ç□B'Ç%oÁ,"æ,Ñ•î□X,ìèè□#,ì□A□yAfNfZfXfjfCf"fg'l'ðzf\_fCfA□f□O,²Šj,«,Ü,·□B,±  
,ìf\_fCfA□f□O,ÅfAfNfZfXfjfCf"fg,ðŽw'è,μ,Ä,¾,³,ç□B

13. □Ý'è,μ,½fAfNfZfXfjfCf"fg,ìŠm" F,²□l,í,Ä,½,ç□A

□qOK□rf{f^f" ,ðfNfŠfbfN,μ,Ä□A□Ú'±□Ý'è,ð□l—¹,μ,Ü,·□B



,"Ç,Ý,¾,³,ç

□E ,±,ì'€□,ì□A□%o,β,ÄHyperROAD,ð'l'ð,·,é,Æ,«,É^è"x,¾,¯□s,ç,Ü,·□B

□E ,·,Ä,ÉHyperROAD,ðŽg,Á,Ä,ç,é□èè□#,ì□A,±,ì'€□,í•K—v, ,è,Ü,¹,ñ□B

□E NIFTY MANAGER,ðfCf"fxfg□[f<,μ,½,Æ,«□A,Ü,½,ì□%o,β,ÄNIFTY  
MANAGER,ð<N" @ ,μ,½,Æ,«,É□A□uÀp²ÔÙ±¹ìßÈ~ÄÜ°,ì□Ý'è□v,Å□AfAfNfZfXfj  
fCf"fg,ðHyperROAD,É,μ,Ä,ç,é,È,ç□A,±,ì'€□,í•K—v, ,è,Ü,¹,ñ□B



fqf"fg

HyperROAD,ìèè□#□A^è,Ä,ì□Ú'±□Ý'è□f□v,É'í,μ,Ä□A•î□",ìfAfNfZfXfj  
fCf"fg,ð□Ý'è,Ä,«,Ü,·□B,½,¾,μ□uROAD7□v,È,ç□A'¾,ìŽí—p,ìfAfNfZfXfjfCf"fg,Æ□—□Ý,μ,Ä□Ý'è,·,é,±  
,Æ,í,Ä,«,Ü,¹,ñ□B



{button i½Ki½Ci½h,PI('NIMINT.HLP','NIM\_INET\_CONNECT\_ODR2\_GUIDE')}  
**HyperROAD,ÄNIFTY SERVE,ÉÜ±,·,é**

fAfNfZfXfJfCf“fg,ðHyperROAD,É,μ,½,çAHyperROAD,ðŽg,Á,ÄNIFTY SERVE,ÉÜ±,μ,Ü,·B  
 HyperROAD,ðŽg,Á,ÄNIFTY SERVE,ÉÜ±,·,é,îAWWWfuf  
 %oEfU[,ÄfCf“f^[]fJfbfg,lfz[]f€fy[]fW,ÉfAfNfZfX,·,é,±,Æ,a,Ä,«,Ü,·B



**HyperROAD,ÄNIFTY SERVE,ÉÜ±,·,é,É,í**  
**NIFTY SERVE,ÉÜ±,·,é**

1. NIFTY MANAGER,ìmftf@fCf<nf[]ff...[] [ ,ðfNfŠfbfN,μ,ÄA  
 []mÜ±[]n ,ðfNfŠfbfN,μ,Ü,·B
2. ID,Ü,½,ÍpfXf[]f,“ü—í,³,é,Ä,ç,È,çé[]±,íA[]yID,ÆpfXf[]f[]fzf\_fCfAf[]fO  
 ,aŠJ,«,Ü,·,©,çA  
 fpfXf[]f ,ðfL[]f{[]f,©,ç“ü—í,μ,ÄA  
 []qOK[]rf{f^f“ ,ðfNfŠfbfN,μ,Ü,·B

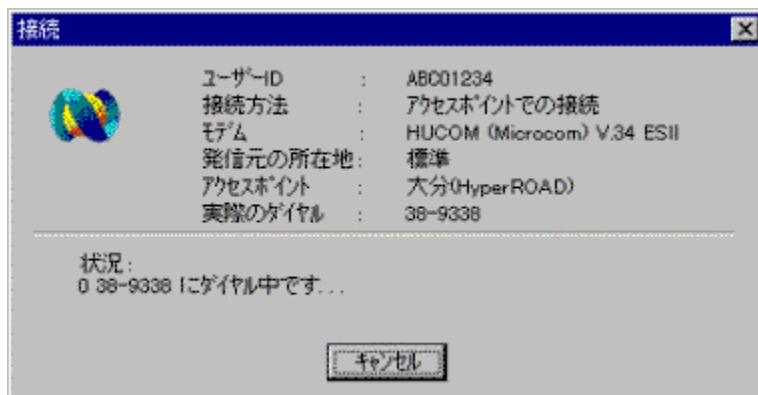
**“ü—í—á**



“ü—í,μ,½pfXf[]f,íAfAfXf^fŠfXfN[]i-[]j,Ä·\Ž!,³,é,Ü,·B

3. []yÜ±[]zf\_fCfAf[]fO ,aŠJ,ç,ÄAÜ±[]ó<μ,a·\Ž!,³,é,Ü,·B

**·\Ž!—á**



,Ü,·AHyperROAD,ÆÜ±,³,éA±,ç,ÄNIFTY SERVE,ÉÜ±,³,é,Ü,·B

[]uf[]fOfCf“f[]fbfz[]fW[]v ,Æ []uTOP[]ffj...[][]v ,a·\Ž!,³,é,½,çANIFTY SERVE,ÆÜ±  
 ,³,é,Ä,ç,Ü,·B

**WWWfuf%oEfU[,ð<N“@,·,é**

4. NIFTY SERVE,ÉÜ±,³,é,½,çA  
 []qWWWfuf%oEfU[][]rf{f^f“[]i[]j ,ðfNfŠfbfN,μ,Ü,·B

5. WWWfuf%oEfU[,a<N“@,³,é,ÄANIFTY SERVE,lfz[]f€fy[]fW,a·\Ž!,³,é,Ü,·B



WWWfuf%ofEfU[] ,íA[]æ,É<N“® ,μ,Ä,¨,ç,Ä,à,©,Ü,ç,Ü,<sup>1</sup>,ñ[]B



,”“Ç,Ý,,<sup>3</sup>/<sub>4</sub>,<sup>3</sup>,ç

[]E []qWWWfuf%ofEfU[] []rf{f^f“ ,ðfNfŠfbfN,·,é‘O,É[]ANIFTY MANAGER,ì[]mfjfvfVf†f“ []nf[]ffj...  
[][,ì[]m^ê”É[]Ý’è[]n,Â[]A,¨Žg,ç,É,È,éWWWfuf%ofEfU[][,ð‘I’ð,μ,Ä,,<sup>3</sup>/<sub>4</sub>,<sup>3</sup>,ç[]B



fqf“fg

HyperROAD,ì[]ê[]#[]ANIFTY SERVE,É,í[]uf\_fCf,,f<fAfbfvfIfbfgf[] []fN[]v,ðŽg,Á,Ä[]Ú’±,<sup>3</sup>,ê,Ü,·[]B  
fc[] [f<fo[][,ìf{f^f“ ,ðfNfŠfbfN,μ,Ä,à[]A[]Ú’±,â[]Ú’±,ì[]|—<sup>1</sup>,È,Ç,ì’€[]i,ð[]s,±,±,Æ,<sup>a</sup>,Â,«,Ü,·[]B

{button i½K½Ci½h,PI('NIMINT.HLP','NIM\_INET\_CONNECT\_ODR3\_GUIDE')}  
NIFTY SERVE,Æ,ìÚ±,ðI-¹,·,é

HyperROAD,ðŽg,Á,NIFTY SERVE,ÉÚ±,μ,Ä,ç,éê±,Ä,àANIFTY SERVE,Æ,ìÚ±,ðI-¹,·,é,Æ,«,ÉAZ©“@“I,Éuf\_fCf,,fAfbfvflfbfgf[]fNv,ðI-¹,·,é,±,Æ,ª,Ä,«,Ü,·B

 NIFTY SERVE,Æ,ìÚ±,ðI-¹,·,é,É,Í

NIFTY SERVE,Æ,ìÚ±,ðI-¹,·,é

1. NIFTY MANAGER,ìmftf@fCf<nf[]fj...[] ,ðfNfŠfbfN,μ,ÄA  
mÚ±I-¹n ,ðfNfŠfbfN,μ,Ü,·B

2. ufOfAfEfGf[]fbfZ[]fWv,ª·\Ž!,³,êA  
±,ç,ÄA uNIFTY SERVE,Æ,ìÚ±,ðI-¹,·,éŽž,É HyperROAD,ì  
%oñü,ðØ’f,μ,Ü,·,©Hv,Æ,ç,xf[]fbfZ[]fW,ª·\Ž!,³,ê,Ü,·,©,çA  
q,í,çrf{f^f“ ,ðfNfŠfbfN,μ,Ü,·B

,±,é,ÄHyperROAD,Æ,ìÚ±,ªI-¹,μ,ÄA uf\_fCf,,fAfbfvflfbfgf[]fNv,àŽ©“@“I,ÉI  
-¹,μ,Ü,·B

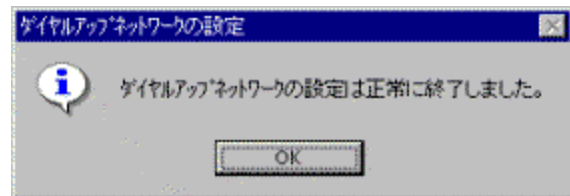
NIFTY MANAGER,ðI-¹,·,é

3. NIFTY MANAGER,ìmftf@fCf<nf[]fj...[] ,ðfNfŠfbfN,μ,ÄA  
mNIFTY MANAGER,ìI-¹n ,ðfNfŠfbfN,μ,Ü,·B

 ,“Ç,Ý,,¾,¾,ç

E NIFTY MANAGER,ðI-¹,μ,Ä,àAWWWfuf%ofEfU[],íI-¹,μ,Ü,¹,ñBWWWfuf  
%ofEfU[],íNIFTY MANAGER,Æ,Í·É,ÉAI-¹,¾,¾,¾,¾,çB

E NIFTY MANAGER,ìmf[]fVf[]fj...  
[],©,çm^è”ÉY’èn,ð’ð,·,é,ÆAy^è”ÉY’èzf\_fCfAf[]fO,ªŠJ,«,Ü,·B,±  
,lf\_fCfAf[]fO,ìmf[]fbfZ[]fWnf^fu,ÄA uNIFTY SERVE,ìÚ±I-¹  
¹Žž,ÉHyperROADØ’f,İSm”F,ðs,È,αv,lf`fFfbfN,ðSO,μ,Ä,“-  
,ÆAŠm”F,lf\_fCfAf[]fO,ðŠJ,©,·,ÉAHyperROAD,ìØ’f,ðs,È,α,±,Æ,ª,Ä,«,Ü,·B

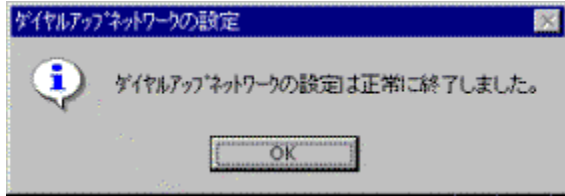


fqf“fg

HyperROAD,ìê±ANIFTY SERVE,É,íuf\_fCf,,fAfbfvflfbfgf[]fNv,ðŽg,Á,ÄÚ±,³,ê,Ü,·B  
fc[]f<fo[],lf{f^f“,ðfNfŠfbfN,μ,Ä,àAÚ±,âÚ±,ìI-¹,È,Ç,ì’€[],ðs,α,±,Æ,ª,Ä,«,Ü,·B

{button i\_z1/2Ki\_z1/2Ci\_z1/2h,PI('NIMINT.HLP','NIM\_INET\_SETUP\_OUT\_GUIDE')}

f\_fCf,,f<fAfbfvflfbfgf[]fN,iY'è•û-@  
[]ufCf"f^[]flfbfgf[]U'±fZfbfgfAfbfv[]v,ÅY'è,μ,Ä,à,α,Ü,[]U'±,Ä,«,È,ç  
,Æ,«,í[]A,²Z©•ª,Å[]uf\_fCf,,f<fAfbfvflfbfgf[]fN[]v,iY'è,δ,·,é,±,Æ,à,Ä,«,Ü,·[]B  
[]uf\_fCf,,f<fAfbfvflfbfgf[]fN[]v,iY'è,É,í[]A"ñ,Ä,ì•û-@,ª,·,è,Ü,·[]B



f\_fCf,,f<fAfbfvflfbfgf[]fN,iY'è•û-@

1. fCf"f^[]flfbfgf\_zfbfgfAfbfvfEfBfU[]fh,ÅY'è,·,é

, "Žg,ç,[]fpf\rf",É[]A[]ufCf"f^[]flfbfgf fGfNfXfjv[]f%[]iInternet Explorer[]j[]v,²fCf"fXfg[]f<,³,è,Ä,ç,è,í[]A,±,ç,ì•û-@,δ,·,·,·,β,μ,Ü,·[]B2,ì•û-@,É"ä,x,é,Æ[]A,±,ç,ì•û-@,ªŠÈ'P,Ä,·[]B

2. f\_fCf,,f<fAfbfvflfbfgf[]fN,É[]V,μ,ç[]U'±,δY'è,·,é

, "Žg,ç,[]fpf\rf",É[]A[]ufCf"f^[]flfbfgf fGfNfXfjv[]f%[]v,²fCf"fXfg[]f<,³,è,Ä,ç,È,ç,[]é[]é[]É,í[]A,±,ç,ì•û-@,ÅY'è,μ,Ä,,³/₄,³,ç[]B"ü—í,·,é[]€-Ú,ª[]μ¹/₂,,È,è,Ü,·,ª[]A1,ì•û-@,Æ"—í,ìY'è,ª,Ä,«,Ü,·[]B

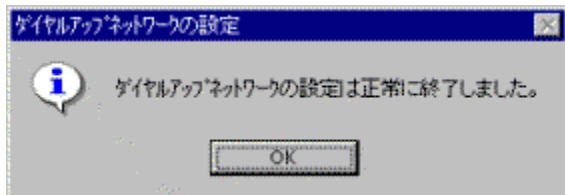
[]U,μ,ç'€[]žè[]#,í[]A,»,è,¼,è,ìžè[]#,ì[]€-Ú,δfNfŠfbfN,μ,Ä,"Ç,Ý,,³/₄,³,ç[]B



, "Ç,Ý,,³/₄,³,ç

[]E []ä<L,ì•û-@,Åf\_fCf,,f<fAfbfvflfbfgf[]fN,δY'è,·,é,Æ,«,É,í[]AHyperROAD,ì"d~b"Ô[]t,δ"ü—í,μ,Ü,·[]B Y'è,δZn,β,é'O,É[]A,"β,,iHyperROAD,ì"d~b"Ô[]t,δ[]T,ì,Ä,,ç,Ä,,³/₄,³,ç[]B fAfNfZfXfj[]fCf"fg,ì"d~b"Ô[]t,í[]ANIFTY SERVE,ì[]ufAfNfZfXfj[]fCf"fg^è—[]iPHONE[]j[]v,δ,²—,,³/₄,³,ç[]iTOPf[]fj...[][,©,ç[]A[]ufT[]f[]fX^Ä"à¥CEY'è[]iSERVICE[]j[]v[]"[]uflf"f%[]fCf"f}fj... fAf<[]iMANUAL[]j[]v[]"[]ufAfNfZfXfj[]fCf"fg^è—[]iPHONE[]j[]v,Æ'I'è,μ,Ü,·[]B

[]E f\_fCf,,f<fAfbfvflfbfgf[]fN,δY'è,μ,½,·,Æ,É[]ANIFTY MANAGER,Å[]AfAfNfZfXfj[]fCf"fg,δHyperROAD,É,μ,Ä,,·K—v,ª,·,è,Ü,·[]B Y'è,ìžè[]#,É,Ä,ç,Ä,í[]A,±,lfwf<fv,lfgfsfbfN[]ufCf"f^[]flfbfgf,É[]U'±,·,é[]v,ì[]ufAfNfZfXfj[]fCf"fg,δHyperROAD,É,·,é[]v,δ,"Ç,Ý,,³/₄,³,ç[]B,½,³/₄,μ[]AZè[]#,ì 9. [] 13. ,Í"ò,Í,μ,Ä,"Ç,Ý,-,³/₄,³,ç[]B



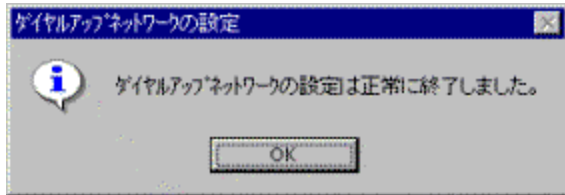
fqf"fg

[]U,μ,ç'€[]žè[]#,í[]A,±,lfwf<fv,ì%∞-È%∞E[]ä,É,·é[]qKfCfh[]rf{f^f",δfNfŠfbfN,μ,Ä[]A"Ç,Ý,½,ç'€[]žè[]#,lfgfsfbfNf<fCfj<,δfNfŠfbfN,μ,Ä,à"Ç,P,±,Æ,ª,Ä,«,Ü,·[]B

{ button i½Ki½Ci½h,PI(`NIMINT.HLP',`NIM\_INET\_SETUP\_ODR1\_GUIDE')}

fCf“f^[]flfbfgfZfbfgfAfbvfEfbfU[]fh,ÅY’è,.,é  
 ,Žg,ç,lfpfvRf“,ÉA[]ufCf“f^[]flfbfg fGfNfXfvf[]f%[]Internet Explorer[]v,²fCf“fXfg[]f<,³,è,Ä,ç  
 ,è,íA[]ufCf“f^[]flfbfg  
 fZfbfgfAfbvfEfbfU[]fh[]v,ðŽg,Á,ÄA“äŠr“iŠÈ’P,Éf\_fCf,,f<fAfbvf[]fbfgf[]fN,ðY’è,.,é,±  
 ,Æ,²,Ä,«,Ü,·[]B

[]ufCf“f^[]flfbfg fGfNfXfvf[]f%[]v,lf[]fWf+“,É,æ,Á,Ä,íAŽè[]±,²,µ^Ù,È,è,Ü,·[]B,±,±  
 ,Ä,íAfo[]fWf+“,² 3.0,íè[]±,ìŽè[]±,ðà-¾,µ,Ü,·[]B

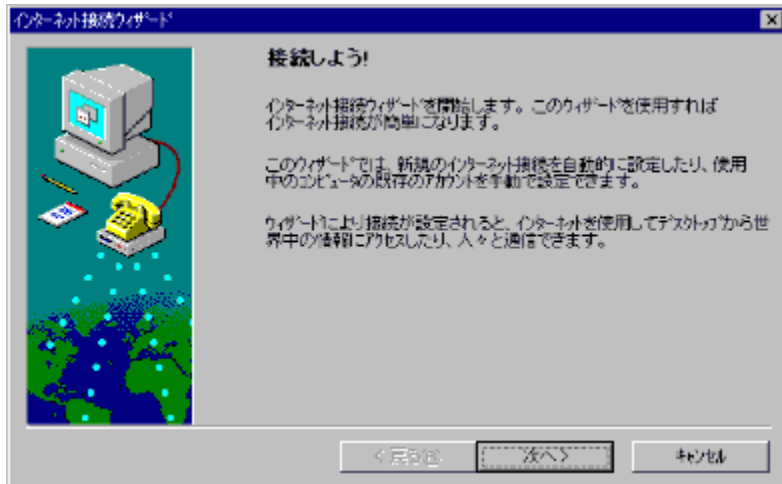


f\_fCf,,f<fAfbvf[]fbfgf[]fN,ðY’è,.,é,É,í

Ü,·[]Afcf“f^[]flfbfgfZfbfgfAfbvfEfbfU[]fh,ðN“®,.,é

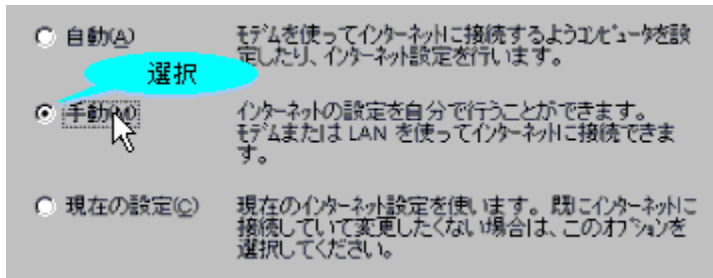
1. []qfXf^[]fg[]rf{f^f“ ,ðf}fEfX,ÄfNfŠfbfN,µ,ÄA  
 []mfvf[]fOf%of€[]n  
 []mfAfnfZftfŠ[]n  
 []mfCf“f^[]flfbfgf[]f<[]n ,ðf|fCf“fg,µ[]A  
 []mfCf“f^[]flfbfg[]Ú’±[]n ,ðfNfŠfbfN,µ,Ü,·[]B
2. []y²YÀ°È`Ä[]Ú’±³”»p°Äp[]i[]Ú’±,µ,æ,²[]I[]j[]zf\_fCfAfbfO,²•\Ž!,³,è,Ü,·,©,ç[]A  
 []qŽY,Ö[]rf{f^f“ ,ðfNfŠfbfN,µ,Ü,·[]B

•\Ž!—á



3. []y²YÀ°È`Ä[]Ú’±³”»p°Äp[]i¾-Ä±`ìßµìß¾@Y[]j[]zf\_fCfAfbfO,²•\Ž!,³,è,Ü,·,©,ç[]A  
 []uŽè“®(M)[]v ,ðf}fEfX,Ä’l,ñ,ÄA  
 []qŽY,Ö[]rf{f^f“ ,ðfNfŠfbfN,µ,Ü,·[]B

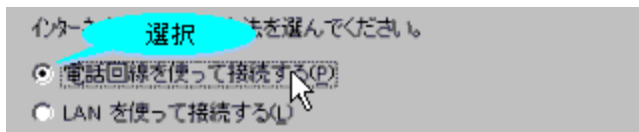
‘l’ð—á



f[]bfz[]fW,É,μ,½,²,Á,ÄY'è,ðs,κ

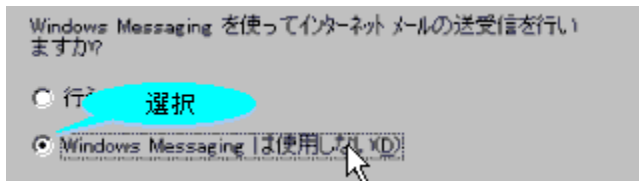
4. []y²YÀ°È-Ä ¾-Ä±-ìß³»p°Äp[]v,²<N"®,³,è,Ä[]A[]y²YÀ°È-Ä ¾-Ä±-ìß³»p°Äp[]i¾-Ä±-ìß,ðšŽn,μ,Û,·[]B[]j[]zf\_fCfA[]fO,²·\Žì,³,è,Û,·,©,ç[]A []qŽÿ,Ö[]rf{f^f" ,ðfNfšfbfN,μ,Û,·[]B
5. []y²YÀ°È-Ä ¾-Ä±-ìß³»p°Äp[]iÜ'±·û-@[]j[]zf\_fCfA[]fO,²·\Žì,³,è,Û,·,©,ç[]A []u"d~b%oñü,ðžg,Á,Ä[]Ü'±,·,é(P)[]v ,ðf}fEfX,Ä'l,ñ,Ä[]A []qŽÿ,Ö[]rf{f^f" ,ðfNfšfbfN,μ,Û,·[]B

'ì-ð-á



6. []y²YÀ°È-Ä ¾-Ä±-ìß³»p°Äp[]i²YÀ°È-Ä Ò°Û[]j[]zf\_fCfA[]fO,²·\Žì,³,è,Û,·,©,ç[]A []uWindows Messaging,Ížg-p,μ,È,t(D)[]v ,ðf}fEfX,Ä'l,ñ,Ä[]A []qŽÿ,Ö[]rf{f^f" ,ðfNfšfbfN,μ,Û,·[]B

'ì-ð-á



7. []y²YÀ°È-Ä ¾-Ä±-ìß³»p°Äp[]i»°Èp½ìßÛÈp²Äp[]i·ñ[]j[]zf\_fCfA[]fO,²·\Žì,³,è,Û,·,©,ç[]A []ufT[][frfXfv[]fofCf\_-¼(S)[]v ,ðfL[]f{[][fh,©,ç"ü-Í,μ,Ä[]A []qŽÿ,Ö[]rf{f^f" ,ðfNfšfbfN,μ,Û,·[]B

"ü-í-á



fT[][frfXfv[]fofCf\_-¼,Íž©-R,É•t,·,é,±,Æ,²,Ä,«,Û,·[]BNIFTY  
MANAGER,Æ,Íž©"®~ACEg,ðs,κ[]ê[]#,í[]A"¼šp,Ä []uHyperROAD[]v ,Æ"ü-Í,μ,Û,·[]B

8. []y²YÀ°È-Ä ¾-Ä±-ìß³»p°Äp[]i"d~b"Ô[]t[]j[]zf\_fCfA[]fO,²·\Žì,³,è,Û,·,©,ç[]A []užsšO<ç"Ô(A)[]v,Æ[]u"d~b"Ô[]t(T)[]v ,ÉHyperROAD,ì"d~b"Ô[]t,ðfL[]f{[][fh,©,ç"ü-Í,μ[]A []u""Ô[]t(C)[]v ,É,í[]u"ú-{(81)[]v ,ðf}fEfX,Ä'l,ñ,Ä[]A []qŽÿ,Ö[]rf{f^f" ,ðfNfšfbfN,μ,Û,·[]B

"ü-í-á

市外局番(A): 電話番号(B):  
 -   
 国番号(C):

9. □y²YÀ°È-Ä ¾-Ä±-ìß³»P°ÄP□iÖ°»P°-¼,ÆÉß½Ü°ÄP□j□zf\_fCfAf□fO,ª•\Žì,³,è,Ü,·,©,ç□A  
 □uÖ°»P°-¼(U)□v ,ÉNIFTY SERVE,ìID,ì□æ“ª,É □uNIM-□v ,ð•t,-,½,à,ì,ðfL□f{□f{fh,©,ç“ü  
 -í,µ,Ä□A  
 □qŽŸ,Ö□rf{f^f“ ,ðfNfŠfbfN,µ,Ü,·□B  
 ,½,Æ,ì,î□ANIFTY SERVE,ìID,ª□uABC01234□v,É,ç□A□uNIM-ABC01234□v,Æ“ü-í,µ,Ä,-  
 ,¾,³,ç□B

“ü—í—á

ユーザー名(U):   
 パスワード(P):

fpfXf□□f{fh,ì□ANIFTY SERVE,É□Ü‘±,·,é,Æ,«,É-^%ñ“ü—í,·,é,Ü,ª,ª^À’S,Ä,·□B,±,±  
 ,Ä,í□A<ó““ ,ì,Ü,Ü,É,µ,Ä,“, ,Ü,ª,ª,æ,ç,Ä,µ,â,ª□B

10. □y²YÀ°È-Ä ¾-Ä±-ìß³»P°ÄP□iP±ÄPÜ½□j□zf\_fCfAf□fO,ª•\Žì,³,è,Ü,·,©,ç□A  
 □u²YÀ°È-Ä »ÉP½ìßÜÊP²ÄP,ªŽ©“@“ì,ÉŠ,,è“- ,Ä,é(M)□v ,ðf}fEfX,Ä‘ì,ñ,Ä□A  
 □qŽŸ,Ö□rf{f^f“ ,ðfNfŠfbfN,µ,Ü,·□B

‘ì—á

インターネット フォーム (IP) アドレスの取得方法を選んでください。  
 選択  
 インターネット サービスプロバイダが自動的に割り当てる(M)  
 常に使用する設定(A):  
 アドレス:

11. □y²YÀ°È-Ä ¾-Ä±-ìß³»P°ÄP□iDNS »°ÉP° ±ÄPÜ½□j□zf\_fCfAf□fO,ª•\Žì,³,è,Ü,·,©,ç□A  
 □uDNS »°ÉP°(D)□v ,É □u202.219.63.254□v  
 □u•É,ìDNS »°ÉP°(A)□v ,É □u202.219.63.253□v  
 ,Æ□AfL□f{□f{fh,©,ç“ü—í,µ,Ä□A  
 □qŽŸ,Ö□rf{f^f“ ,ðfNfŠfbfN,µ,Ü,·□B

“ü—í—á

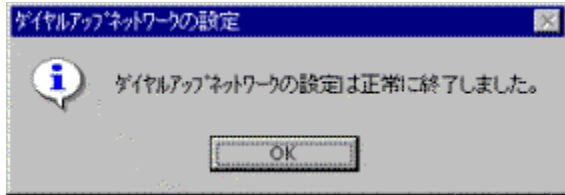
DNS サーバ(D):   
 別の DNS サーバ (A):

□“ì,Æ□“ì,ìSÖ,ì□AfsfŠf{fh□u . □v,Ä<æ□Ø,Ä,Ä“ü—í,µ,Ä,,¾,³,ç□B

□Y‘è,ð□ì—í,·,é

12. □y²YÀ°È-Ä ¾-Ä±-ìß³»P°ÄP□iY‘èŠ@—¹!□j□zf\_fCfAf□fO,ª•\Žì,³,è,Ü,·,©,ç□A  
 □qŠ@—¹□rf{f^f“ ,ðfNfŠfbfN,µ,Ü,·□B

13. □Y‘è,ª□ì,í,Ä,½,ç□AfpfRf“ ,ðÄ<N“@ ,µ,Ä,,¾,³,ç□B  
 □Y‘è,ª□ì,í,Ä,½, ,Æ□AfpfRf“ ,ðÄ<N“@ ,µ,Ä,, ,©,É, ,é,î□ANIFTY MANAGER,ð□Ü‘±  
 ,·,é,Æ,«,ÉfGf%□□,É,É,é,±,Æ,ª, ,è,Ü,·□B



;"Ç,Ý,,¾,¾,¢

□E □ufCf"f^□[flfbfg fGfNfXfvf□□[f%□v,lf□□[fWf#f" ,ª 2.0 ,ì□ê□‡,í□AZÿ,ìžè□‡,Å□Ý'è,µ,Ä,-  
¾,¾,¢□B

1. □qfXf^□[fg□rf{f^f" ,ðf}fEfX,ÅfNfŠfbfN,µ,Ä□A

□mfvf□fOf%of€□n

□mfAfNfZfTfS□n

□mfCf"f^□[flfbfgfc□[f<□n ,ðf}fCf"f^fg,µ□A

□mfCf"f^□[flfbfgZfbfgfAfbfvfEfBfU□[fh□n ,ðfNfŠfbfN,µ,Ü,·□B

2. □u²ÝÀ°È-Ä ¾-Ä±`ìß³`»p°Äp□v,ª<N" @,¾,è,Ä□A□y²ÝÀ°È-Ä

¾-Ä±`ìß³`»p°Äp□i¾-Ä±`ìß,ðSjžn,µ,Ü,·□B□j□zf\_fCfAf□fO,ª\Žì,¾,è,Ü,·,©,ç□A

□qŽÿ,Ö□rf{f^f" ,ðfNfŠfbfN,µ,Ü,·□B

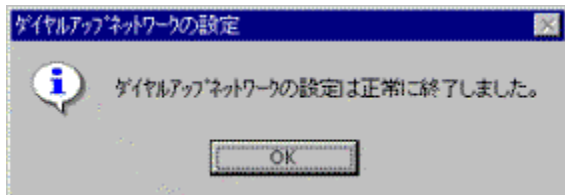
3. ,±,è^È□~ ,í□A□ã<L,ìžè□‡ 5. ^È□~ ,Æ" ,¶,Ä,·□B

□E , "Žg,¢,lfpfvRf" ,ìŠÀ<<,É,æ,Á,Ä,í□A□Ý'è,ì"r't,ÅŽ©" @ "l,ÉfCf"fXfg□[f<□i•K—v,Èfvf□fOf%of€  
,âftf@fCf<,ðfpfvRf" ,ÅŽg,ì,é,æ,ª,É,·,é,±,Æ□j,ªžn,Ü,é,±,Æ,ª ,è,Ü,·□B□fbfZ□[fW,É,µ,½,ª,Á,  
ÅfCf"fXfg□[f<,µ,Ä,,¾,¾,¢□B

fCf"fXfg□[f<,É,í□AWindows 95,ìCD-ROM□i,Ü,½,lfvf□fbfSfB□[fffBfXfN□j,ª•K—v,È,±

,Æ,à, ,è,Ü,·,©,ç□A, ,ç,©,¶,ß—p^Ó,µ,Ä,,<,Ü,µ,ã,ª□B

fCf"fXfg□[f<,ª□i,í,Á,½, ,Æ,ÅfpfvRf" ,ð□Ä<N" @ ,µ,È, ,è,ì,È,è,Ü,¹,ñ□BŽÀ□s't,lfvf□fOf%of€,ª ,è  
,ì□i,í,ç,¹,Ä,,<,Ü,µ,ã,ª□B

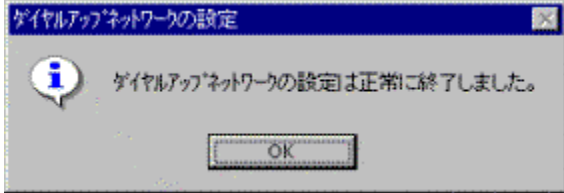


fqf"fg

f\_fCf,,f<fAfbfvflfbfg□□[fN,ì□Ý'è•ù-@,É,í□Af\_fCf,,f<fAfbfvflfbfg□□[fN,É□V,µ,¢□Ú'±,ð□Ý'è,·,é,Æ,¢,ª•ù-@,à, ,  
è,Ü,·□B

{ button i½Ki½Ci½h,PI(`NIMINT.HLP',`NIM\_INET\_SETUP\_ODR2\_GUIDE')}

f\_fCf,,f<fAfbfvflfbfgf[]fN,É[]V,μ,¢[]Ú'±,ð[]Ý'è,.,é  
 ,Žg,¢,lfppfRf",É[]A[]ufCf"f^[]flfbfg fGfNfXfvf[]f%[]v,afCf"fXfg[]f<,³,è,Ä,¢  
 ,É,¢[]é[]#,É,Í[]Af\_fCf,,f<fAfbfvflfbfgf[]fN,É[]V,μ,¢[]Ú'±,ð[]Ý'è,.,é•ú-@,ª,è,Ü,·[]B,±,ì•ú-  
 @,Ä,à[]A[]ufCf"f^[]flfbfg fZfbfgfAfbfvfEfBfU[]fh[]v,ðŽg,ª•ú-@,Æ"–I,ì[]Ý'è,ª,Ä,«,Ü,·[]B



f\_fCf,,f<fAfbfvflfbfgf[]fN,ð[]Ý'è,.,é,É,Í

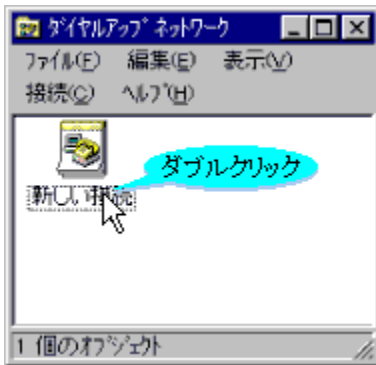
,Ü,·[]Af\_fCf,,f<fAfbfvflfbfgf[]fN,ìftfHf<f\_ðŠJ,

1. []qfXf^[]fg[]rf{f^f" ,ðf}fEfX,ÄfNfŠfbfN,μ,Ä[]A  
 []mfvf[]fOf%[]f€[]n  
 []mfAfNfZfTfŠ[]n ,ðf|fCf"f'g,μ[]A  
 []mf\_fCf,,f<fAfbfvflfbfgf[]fN[]n ,ðfNfŠfbfN,μ,Ü,·[]B

[]u[]V,μ,¢[]Ú'±[]v,ð[]ì[]–,.,é

2. []yf\_fCf,,f<fAfbfvflfbfgf[]fN[]zfEfBf"f'hfE,ªŠJ,«,Ü,.,©,¢[]A  
 []m[]V,μ,¢[]Ú'±[]nfAfCfRf" ,ðf\_fuf<fNfŠfbfN,μ,Ü,·[]B

•\Žì–á



3. []y[]V,μ,¢[]Ú'±[]i[]Ú'±–¼[]j[]zf\_fCfAf[]fO,ª•\Žì,³,è,Ü,.,©,¢[]A  
 []u[]Ú'±–¼(T)[]v ,É[]Ú'±–¼,ðfL[]f{[]fh,©,¢"ü–Í,μ,Ä[]A  
 []qŽÝ,Ö[]rf{f^f" ,ðfNfŠfbfN,μ,Ü,·[]B

"ü–í–á



[]Ú'±–¼,ÍŽ©–R,É•t,¯,é,±,Æ,ª,Ä,«,Ü,·[]BNIFTY  
 MANAGER,Æ,ìŽ©"®~ACEg,ð[]s,ª[]é[]#,Í[]A"¼Šp,Ä []uHyperROAD[]v ,Æ"ü–Í,μ,Ü,·[]B

4. []y[]V,μ,¢[]Ú'±[]i[]Ú'±[]æ,ì"d~b"Ô[]t[]c[]j[]zf\_fCfAf[]fO,ª•\Žì,³,è,Ü,.,©,¢[]A  
 []uŽsŠO<Ç"Ô(R)[]v,Æ[]u"d~b"Ô[]t(T)[]v ,ÉHyperROAD,ì"d~b"Ô[]t,ðfL[]f{[]fh,©,¢"ü–  
 Í,μ[]A  
 []u[]""Ô[]t(U)[]v ,É,Í[]u"ú–{(81)[]v ,ðf}fEfX,Ä'l,ñ,Ä[]A  
 []qŽÝ,Ö[]rf{f^f" ,ðfNfŠfbfN,μ,Ü,·[]B

"ü–í–á



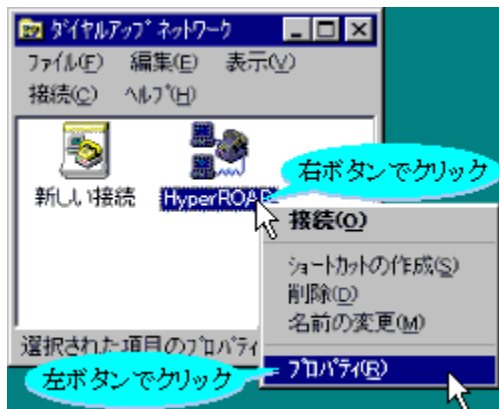
市外局番(B): 電話番号(D):  
 03 - 57110003  
 国番号(U):  
 日本 (01)

5. □y□V,μ,φ□Ú'±□i□V,μ,φÀp²Ôù±`ìßÈ`ÄÜ° ,□Ú'±,ª□c□j□zf\_fCfAf□fO,ª•\Ž! ,³,ê,Ü,.,©,ç□A  
 □qŠ®—¹□rf{f^f" ,ðfNfŠfbfN,μ,Ü,·□B

□ì□→,μ,½□Ú'±,ìfvf□fpfefB,ð□Ý'è,.,é

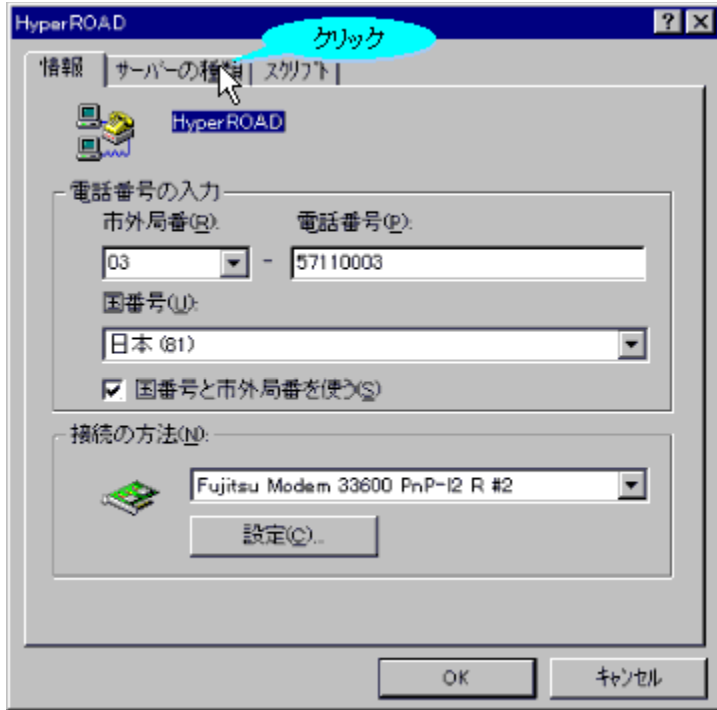
6. □yf\_fCf,,fçfAfbfvlfjbfjgf□□lfN□zfEfBf"fhfE,É□A□ì□→,μ,½□Ú'±□iHyperROAD□j,ìfAfCfRf" ,ª'Ç  
 %oÁ,³,ê,Ä,ç,Ü,.,©,ç□A  
 ,±,ìfAfCfRf" ,Éf}fEfX,ìfjCf" f^ ,ð, ,í,¹,Ä□A  
 f}fEfX,ì%oEf{f^f" ,ÁfNfŠfbfN,μ,Ü,·□B  
 fvf#□lfgfjfbfgf□fj...□[ ,ª•\Ž! ,³,ê,Ü,.,©,ç□A  
 □mfvf□fpfefB□n ,ð□¶f{f^f" ,ÁfNfŠfbfN,μ,Ü,·□B

'!ð—á



7. □yHyperROAD□i□î•ñ□j□zf\_fCfAf□fO,ª•\Ž! ,³,ê,Ü,.,©,ç□A  
 [»°Ép°,ìŽí—p]f^fu ,ðfNfŠfbfN,μ,Ü,·□B

•\Ž!—á



f\_fCfAf□fO,lf^fCfGf<fo□[,É•\Ž!,³,ê,Ä,ç,éf^fCfGf<,Í□AZè□# 3. ,Ä•t,¯,½□Ú'±-¼,Ä,·□B

8. □yHyperROAD□i»°ÉP°,ìŽí—P□j□zf\_fCfAf□fO,ª•\Ž!,³,ê,Ü,·,©,ç□A

ŽŸ,ì“ñ,Ä,ì□€-Ú,ð□Af}fEfX,ÄfNfŠfbfN,μ,Äf`fFfbfN,μ,Ü,·□B

□u□Ú□×μì¼@Ÿ□v,ì

□uÈ`ÄÜ°,.,Ö,lf□fOfIf“(L)

□v

□uŽg—p,Ä,«,éÈ`ÄÜ°,

□uTCP/IP(T)□v

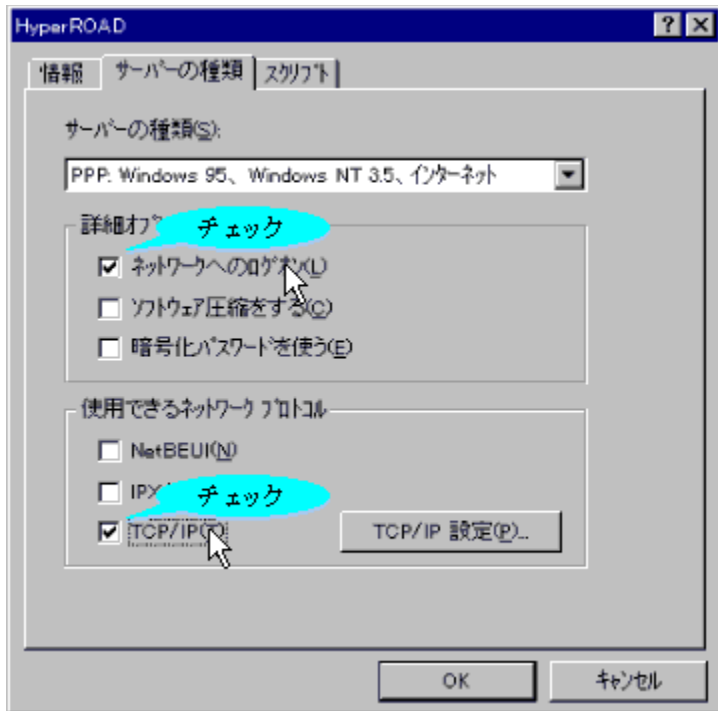
ìßÜÄ°Ü□v,ì

,±,ì“ñ,Ä^ÈŠO,ì□€-Ú,lf`fFfbfN,μ,È,ç,Ä,,¾,¾,ç□B,à,μ□Af`fFfbfN,³,ê,Ä,ç

,é,È,ç`fFfbfN,ð,ì,,μ,Ä,,¾,¾,ç □if`fFfbfN,ð,ì,,·,É,Í□A,à,α^è“xf}fEfX,ÄfNfŠfbfN,μ,Ü,·□B

ŽŸ,É□A□qTCP/IP□Ÿ`è□rf{f^f“,ðfNfŠfbfN,μ,Ü,·□B

f`fFfbfN—á



9. TCP/IP の設定

サーバーの種類: PPP. Windows 95、Windows NT 3.5、インターネット

- ネットワークへのログオン(O)
- ソフトウェア圧縮をする(C)
- 暗号化パスワードを使う(E)
- NetBEUI(N)
- IPX
- TCP/IP(P) TCP/IP 設定(O)...

IP の設定 (IP アドレス、サブネットマスク、デフォルトゲートウェイ)  
 DNS の設定 (DNS サーバの IP アドレス)  
 WINS の設定 (WINS サーバの IP アドレス)  
 TCP/IP の詳細設定 (TCP/IP プロトコルスタック、名前解決、ルーティング)

サーバーの種類: PPP. Windows 95、Windows NT 3.5、インターネット



{ button i½Ki½Ci½h,PI(`NIMINT.HLP',`NIM\_INET\_HINT\_OUT\_GUIDE')}}  
fCf“f^[]fifbfg□Ú‘±,lfqf“fg

fCf“f^[]fifbfg,É□Ú‘±,·,é,½,ß,lfqf“fg□W,Å,·□B,“Ç,Ý,É,È,è,½,çfqf“fg,ðNfŠfbfN,µ,Ä,,¾,³,ç□B

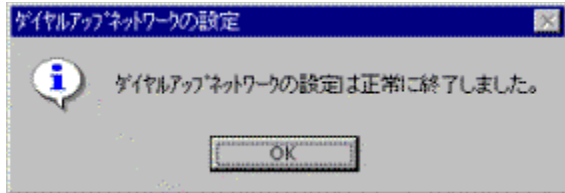
□H [WWWfuf%ofEfU□\[.É,Â,ç,Ä](#)

□H [HyperROAD,Æ,Í](#)

□H [•K—v,È,à,ì,í](#)

□I [WWWfuf%ofEfU□\[f{f^f“,ðNfŠfbfN,·,é,ÆfGf%□\[.É,È,é](#)

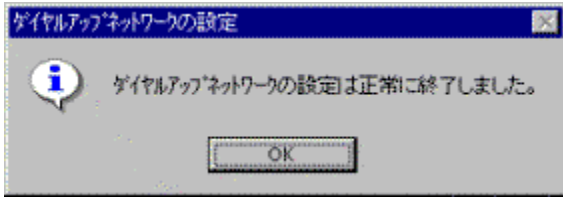
□I [-â‘è,ð%ðCE^,Å,«,È,ç,Æ,«,É,Í□c](#)



fqf“fg

,Ç,µ,µ,Ä,à□Ú‘±,¾,x,Ü,,ç,©,È,ç,Æ,«,É,Í□A□u□I -â‘è,ð%ðCE^,Å,«,È,ç,Æ,«,É,Í□c□v,ð,“Ç,Ý,,¾,³,ç□B

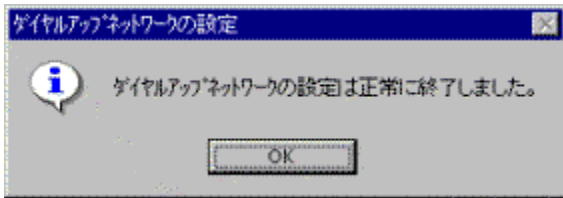
# ダイアルアップネットワークの設定



## WWWfuf%ofEfU[~ACEg

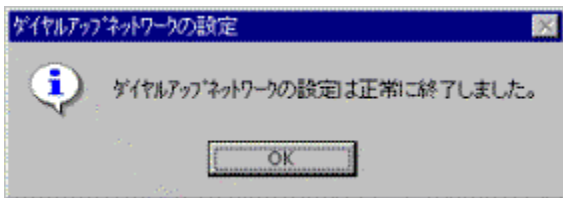
WWWfuf%ofEfU[~ACEg,AE,íANIFTY MANAGER,AEWWWfuf%ofEfU[,a~ACEg,μ,Ä“@,<@”\,ì,±,AE,Ä,·□B,±,ì,AE,«ANIFTY MANAGER,AEWWWfuf%ofEfU[,ð“~Žž,ÉŽg,±,±,AE,ä,Ä,«,Ü,·□B,½,AE,ì,íANIFTY MANAGER,ÄftfH[f%of€,ì”CE¾,ð“Ç,Ý,É,ä,ç□AWWWfuf%ofEfU[,Äfz□[f€fy□[fW,ðŽQ□AE,·,é,È,Ç,ìŽg,ç•û,ä,è,Ü,·□B

NIFTY MANAGER,AE~ACEg,·,éWWWfuf%ofEfU[,íAZÿ,ì,Q,Ä,lfuf%ofEfU[,Ä,·□B  
- flfbfgfXfp□[fv fifrfQ□[f^ □iNetscape Navigator□  
- f}fCfNf□[fvtfg fCf“f^ □[flfbfg fGfNfXfvf□[f% □iMicrosoft Internet Explorer□



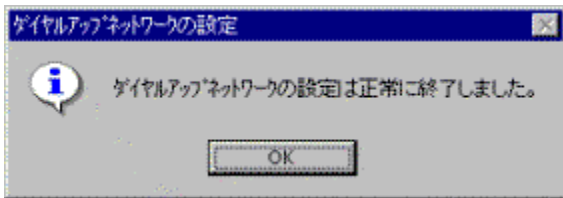
## WWWfuf%ofEfU[,ð“üžè,·,é

Windows95,afvfCEfCf“fXfg□[f<,³,é,Ä,ç,é□i□Å□%,©,ç’g,Ý□ž,Ü,é,Ä,ç,é□jfpfVfRf“,ì□ê□#□A’½,-,íWWWfuf%ofEfU[,ä□Å□%,©,ç’g,Ý□ž,Ü,é,Ä,ç,Ü,·□B,“Žg,ç,lfpfVfRf“,ðSm”F,μ,Ä,-,¾,³,ç□B,Ü,½□AfpVfRf“ŽŽ□□E□□□,ì•t~^□AfCf“f^□[flfbfg,È,Ç,©,ç,à“üžè,·,é,±,AE,ä,Ä,«,Ü,·□B



## WWWfuf%ofEfU[,ð’l’ð,·,é

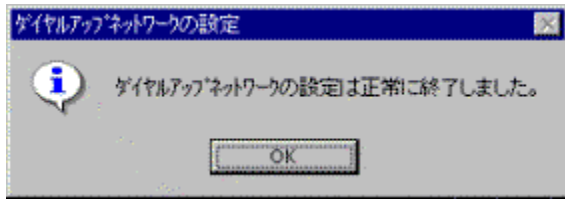
NIFTY MANAGER,ì□y^è”É□Ý’è□zf\_fCfA□fO,Ä□A,“Žg,ç,É,È,éWWWfuf%ofEfU[,ð’l’ð,μ,Ä,-,¾,³,ç□B  
NIFTY MANAGER,ì□ufIfvfVf+f“□vf□jfj...  
□[,ì□u^è”É□Ý’è□v,ðfNfŠfbfN,·,é,AE□A□y^è”É□Ý’è□zf\_fCfA□fO,äŠj,«,Ü,·□B□mìp×³»p°,ì’l’ð□nf^fu,ðfNfŠfbfN,μ,Ä□A,“Žg,ç,É,È,éWWWfuf%ofEfU[,ð’l,ñ,Ä,¾,³,ç□B



## “Ç,Ý,¾,³,ç

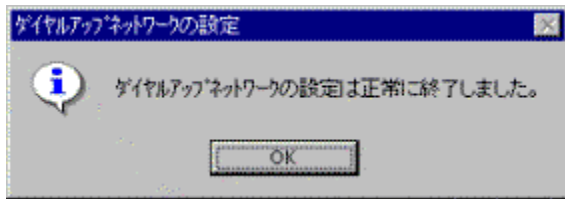
HyperROAD□A,Ü,½,íHyperROAD64,ðŽg,Ä,Ä□AWWWfuf%ofEfU[,ð,²~—p,É,È,ç,·,é□ANIFTY SERVE,lf□[fxf,¾,³,ð,“Žg,ç,ç,½,¾,³,±,AE,à,Ä,«,Ü,·□B

## HyperROAD, AE, I



### HyperROAD, AE, I

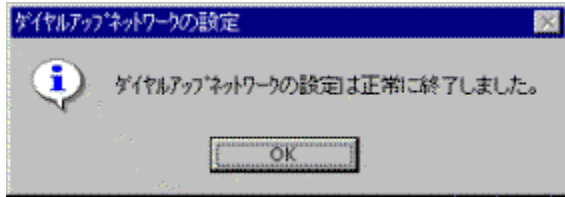
HyperROAD ifnfCfp [fh] ANIFTY SERVE, ifCf "f^ [f]fbfgfT [frfX, ð, 2 ~ ~ p, ç, 1/2, 3/4, -  
1/2, ß, ì ê ~ p]fbfgf [fN, Å, ·]B  
, ±, ì ê ~ p]fbfgf [fN, ðCe o ~ R, μ, Ä ANIFTY SERVE, É Ú' ±, ·, ê, î ANIFTY  
MANAGER, AE " Zž, É WWWfuf%ofEfU [ , ð < N " @ , μ, Ä AfCf " f ^ [f]fbfg, ìT [frfX, ð, 2 ~ ~ p, ç, 1/2, 3/4, -  
, ±, AE, à, Å, «, Ü, ·]i, ±, ê, ð u WWWfuf%ofEfU [ ~ ACEg v, AE Å, Ñ, Ü, ·]j B  
, ±, ì ê ~ p]fbfgf [fN, É, í A HyperROAD, AE HyperROAD64, AE, ç, x " ñ Ž í ~ b, ì f AfNfZfXf]fCf " fg, à, , è,  
Ü, ·]B HyperROAD, í A ^ è " É, ì " d " b % ñ ü, ð, " Žg, ç, ì • ù, ì, 1/2, ß, ì f AfNfZfXf]fCf " fg, Å, ·]BFENICS  
ROAD5 AROAD7, É, Ç, AE " ~ l, É Af, fff€, ð Žg, Å, Ä Ú' ±, μ, Ü, ·]B HyperROAD64, í AISDN  
% ñ ü, ð, " Žg, ç, ì • ù, ì, 1/2, ß, ì f AfNfZfXf]fCf " fg, Å, ·]B Ú' ±, É, í TA if ^ [f ~ fif < f Af\_fvf ^ [j, à • K ~  
v, Å, ·]B



### "Ç, Ý, 3/4, 3, ç

E WWWfuf%ofEfU [ ~ ACEg, É, Å, ç, Ä, í A, ±, ì f wf < fv, ì g fs fb fN u fCf " f ^ [f]fbfg Ú' ±  
ì f qf " fg v, ì u ? WWWfuf%ofEfU [ , É, Å, ç, Ä v, ð, " Ç, Ý, 3/4, 3, ç B  
E HyperROAD A, Ü, 1/2, í HyperROAD64, ð Žg, Å, Ä AWWWfuf%ofEfU [ , ð, 2 ~ ~  
p, É, È, ç, , É ANIFTY SERVE, ìT [frfX, 3/4, ~, ð, " Žg, ç, ç, 1/2, 3/4, , ±, AE, à, Å, «, Ü, ·]B  
E ISDN % ñ ü, É, Å, ç, Ä, í A, " < ß, , ì NTT, É, " ~ â, ç [ ±, í, 1, , 3/4, 3, ç B

□H •K—v,È,à,ì,í



•K—v,È,à,ì,í□H

NIFTY MANAGER, ©, çfCf“f^□[flfbfg, É□Ú'±, ., é, É, í□AZÿ, ìf\ftfgfEfffA, a•K—v, Å, .□B

□E NIFTY MANAGER for Windows 95 Ver 2.00^È□~

□E f\_fCf,,f<fAfbfvflfbfgf□□[fN

□E WWWfuf%ofEfU□[ ,Æ,μ,Ä□A

flfbfgfXfP□[fv fifrfQ□[f^□iNetscape Navigator□]

f}fCfNf□f\ftfg fCf“f^□[flfbfg fGfNfXfvf□□[f%□iMicrosoft Internet Explorer□] ,ì,ç,.,é,©

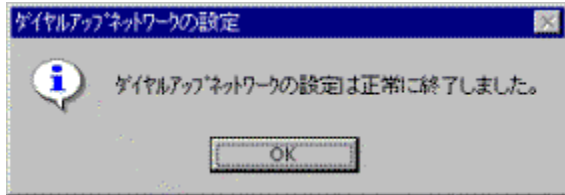
□uf\_fCf,,f<fAfbfvflfbfgf□□[fN□v, íWindows 95, É•t'®, μ, Ä, ç, Ü, .□B

HyperROAD64, ðŽg, x□ê□±, É, í□AZÿ, ìŠÂ<□ifn□[fhfEfffA□], à•K—v, Å, .□B

□E ISDN%oñ□ü

□E f^□[f~fif< fAf\_fvf^ □iTA□]

□E DSU □iDSU, í□Af^□[f~fif<fAf\_fvf^, É“à' ,³,ê,Ä,ç,é□ê□±,à, ,è,Ü, .□j



, “Ç,Ý,,³/₄,³,ç

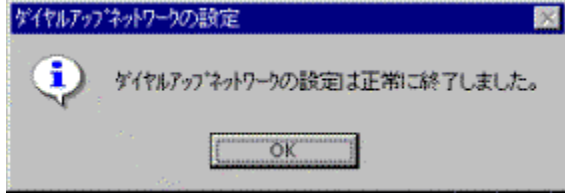
□E HyperROAD64, É, Å, ç, Ä, í□A, ±, ìfwf<fv, ìfgfsfbfN□ufCf“f^□[flfbfg□Ú'±, ìfqf“fg□v, ì□u?  
HyperROAD,Æ,í□v,ð, “Ç,Ý,,³/₄,³,ç□B

□E ISDN%oñ□ü, É, Å, ç, Ä, í□A, “<β,, ÌNTT, É, “-â, ç□±, í,¹,,³/₄,³,ç□B

□E Windows95, afvfçEfcf“fXfg□[f<,³,ê,Ä,ç,é□i□Å□%o, ©, ç'g, Ý□ž, Ü, é, Ä, ç, é□jfpf\frf“, ì□é□±□A'½,-  
íWWWfuf%ofEfU□[ ,³□Å□%o, ©, ç'g, Ý□ž, Ü, é, Ä, ç, Ü, .□B, “Žg, ç, ìfpf\frf“, ðSm“F, μ, Ä, -  
,³/₄,³,ç□B, Ü, ½□Afpf\frf“ŽGŽ□□E□□Ð, ì•t~^□AfCf“f^□[flfbfg, É, Ç, ©, ç, à“üžè, ., é, ±  
,Æ, a, Ä, <, Ü, .□B



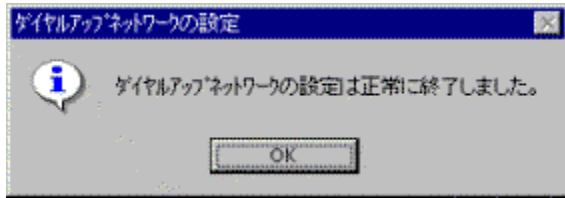
# ダイアルアップネットワークの設定



ダイアルアップネットワークの設定は正常に終了しました。

NIFTY MANAGER, 設定は正常に終了しました。

NIFTY MANAGER, 設定は正常に終了しました。



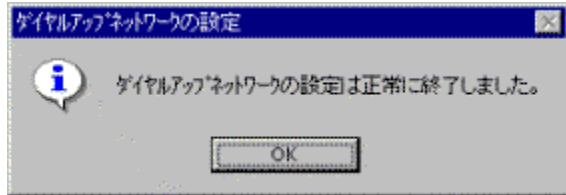
ダイアルアップネットワークの設定は正常に終了しました。

NIFTY MANAGER, 設定は正常に終了しました。

ISDN 設定は正常に終了しました。

# 1. à,æ,ë“x□A□Y’è,È,Ç,ð,Šm,©,ß,,¾,³,¢

,æ,Ü,fCf“f^□[f]f]bfg,É□Ú’±,Ä,«,È,¢,Æ,«,Í□A,±,±,ð,“Ç,Ý,,¾,³,¢□B



## 1. à,æ,ë“x□A□Y’è,È,Ç,ð,Šm,©,ß,,¾,³,¢

,à,æ,ë“x□AHyperROAD,ì“d~b”Ô□†,²□³,µ,¢,©□AWWWfuf%ofEfU□[,í’ð,µ,Ä,¢,é,©,È,Ç□A,±,ì,fw]f<fv,É□’,¢,Ä, ,é,±,Æ,²□³,µ,□s,í,ê,Ä,¢,é,©,ð,Šm,©,ß,,¾,³,¢□B



## 2. ŽŸ,É□ANIFTY MANAGER fTf|□[fgftfH□[f

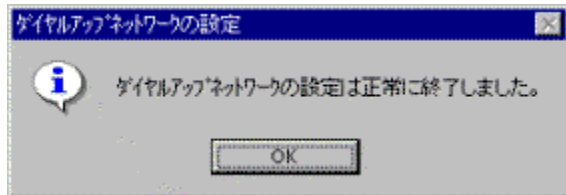
%of€□iNIMSUP□j,Ä□A—pŽ—,ìŽž-â,âŽ—á,²,È,¢,©,Šm,©,ß,,¾,³,¢

NIFTY MANAGER fTf|□[fgftfH□[f%of€□iNIMSUP□j,ì%oi<cŽž,É,Í□ANIFTY MANAGER,É,Ä,¢,Ä,ì,³,Ü,´,Ü,È,²Žž-â,²Šñ,¹,ç,é,Ä,¢,Ä□A,»,ì^è,Ä^è,Ä,É%ñ“š,²“Y,ì,ç,é,Ä,¢,Ü,·□B’†,É,Í□A’“,¶,æ,x,È-â’è,ð,Ž□,ž,ì•ù,²““,¶,æ,x,ÈŽž-â,ð,È,³,Ä,Ä,¢,é,©,à,µ,é,Ü,¹,ñ□B

““,¶,æ,x,ÈŽž-â,²,Ý,Ä,©,ç,È,¢,Æ,«,É,Í□ANIFTY MANAGER fTf|□[fgftfH□[f%of€,ì%oi<cŽž,Ü,Ä,²Žž-â,,¾,³,¢□B

,²Žž-â,ì□Ü,É,Í□A•K—v,È□î•ñ,ð,Ü,Æ,ß,½□‘Žž,²,è,Ü,·,ì,Ä,²Š^—p,,¾,³,¢□B

□%oo,ß,Ä NIFTY MANAGER fTf|□[fgftfH□[f%of€,ð,²—~—p,É,È,é,Æ,«,É,Í□A□u□Ä□%o,É,“Ç,Ý,,¾,³,¢□v%oi<cŽž,ì“à—e,ð,²^è“Ç,,¾,³,¢□B



## 3. NIFTY MANAGER fTf|□[fgf\_fCf,,f<,É,“d~b,-

,¾,³,¢

,Ç,x,µ,Ä,à-â’è,ð%oðCE^,Ä,«,È,¢,Æ,«,É,Í□ANIFTY MANAGER fTf|□[fgf\_fCf,,f<,É,“d~b,,¾,³,¢□B


,“d~b,ì□Ü,É,Í□AŽg—p<@Ší□ANIFTY MANAGER,ìfo□[fwf]f“□A•\


Žì,³,é,½□fbfZ□[fW,È,Ç,ð□A,ç,©,¶,ß,ŽèCE³,É□T,ì,Ä,“,¢,Ä,,¾,³,¢□B


**fKfCfh** □iNIFTY MANAGER,ÅfCf“f^□[flfbfg□]

- Å□%o.É.ˆ“Ç.Ý.¾.¾.ç□ifCf“f^□[flfbfg□Ú‘±.ì.½.ß.É□i
- fCf“f^□[flfbfg.É□Ú‘±.ˆ.é
- fAfNfZfXf|fCf“fg.ðHyperROAD.É.ˆ.é
- HyperROAD,ÅNIFTY SERVE.É□Ú‘±.ˆ.é
- NIFTY SERVE,Æ.ì□Ú‘±.ð□—¹.ˆ.é
- f\_fCf.,f<fAfbfvflfbfgf□□[fN.ì□Ý’è•ù-@
- fCf“f^□[flfbfgfZfbgqfAfbvfEfBfU□[fh.Å□Ý’è.ˆ.é
- f\_fCf.,f<fAfbfvflfbfgf□□[fN.É□V.µ.ç□Ú‘±.ð□Ý’è.ˆ.é
- fCf“f^□[flfbfg□Ú‘±.ìfqf“fg

**fKfCfh** □iNIFTY MANAGER,ÅfCf“f^□[flfbfg□]

 □Å□%o,É,“Ç,Ý,¾,¾,ç□ifCf“f^□[flfbfg□Ú'±,ì,½,ß,É□]


 fCf“f^□[flfbfg,É□Ú'±,,:é

 fAfNfZfXf|fCf“fg,ðHyperROAD,É,,:é


 HyperROAD,ÅNIFTY SERVE,É□Ú'±,,:é

 NIFTY SERVE,Æ,ì□Ú'±,ð□|—¹,,:é


 f\_fCf,,f<fAfbfvflfbfgf□□[fN,ì□Ý'è•û-@


 fCf“f^□[flfbfgfZfbfgfAfbvfEfBfU□[fh,Å□Ý'è,,:é


 f\_fCf,,f<fAfbfvflfbfgf□□[fN,É□V,µ,ç□Ú'±,ð□Ý'è,,:é

 fCf“f^□[flfbfg□Ú'±,ìqf“fg

**fKfCfh** iNIFTY MANAGER,ÅfCf“f^[flfbfg]

 Å%o,É,“Ç,Ý,¾,¾,çifCf“f^[flfbfg]Ú’±,ì,½,ß,É


 fCf“f^[flfbfg,ÉÚ’±,,:é

 fAfNfZfXf|fCf“fg,ðHyperROAD,É,,:é


 HyperROAD,ÅNIFTY SERVE,ÉÚ’±,,:é

 NIFTY SERVE,Æ,ìÚ’±,ð|—¹,,:é


 f\_fCf,,f<fAfbfvflfbfgf[fN,ìÿ’è•û-@


 fCf“f^[flfbfgfZfbfgfAfbvfEfBfU[fh,Åÿ’è,,:é


 f\_fCf,,f<fAfbfvflfbfgf[fN,ÉV,µ,çÚ’±,ðÿ’è,,:é

 fCf“f^[flfbfg]Ú’±,ìqf“fg

**fKfCfh** □iNIFTY MANAGER,ÅfCf“f^□[flfbfg□]

 □Å□%o,É,“Ç,Ý,¾,¾,ç□ifCf“f^□[flfbfg□Ú'±,ì,½,ß,É□]


 fCf“f^□[flfbfg,É□Ú'±,,:é


 fAfNfZfXf|fCf“fg,ðHyperROAD,É,,:é


 HyperROAD,ÅNIFTY SERVE,É□Ú'±,,:é

 NIFTY SERVE,Æ,ì□Ú'±,ð□|—¹,,:é


 f\_fCf,,f<fAfbfvflfbfgf□□[fN,ì□Ý'è•û-@


 fCf“f^□[flfbfgfZfbfgfAfbvfEfBfU□[fh,Å□Ý'è,,:é


 f\_fCf,,f<fAfbfvflfbfgf□□[fN,É□V,µ,ç□Ú'±,ð□Ý'è,,:é

 fCf“f^□[flfbfg□Ú'±,ìqf“fg

**fKfCfh** □iNIFTY MANAGER,ÅfCf“f^□[flfbfg□]

 □Å□%o,É,“Ç,Ý,¾,¾,ç□ifCf“f^□[flfbfg□Ú'±,ì,½,ß,É□]


 fCf“f^□[flfbfg,É□Ú'±,,:é


 fAfNfZfXf|fCf“fg,ðHyperROAD,É,,:é


 HyperROAD,ÅNIFTY SERVE,É□Ú'±,,:é

 NIFTY SERVE,Æ,ì□Ú'±,ð□|—¹,,:é


 f\_fCf,,f<fAfbfvflfbfgf□□[fN,ì□Ý'è•û-@


 fCf“f^□[flfbfgfZfbfgfAfbvfEfBfU□[fh,Å□Ý'è,,:é


 f\_fCf,,f<fAfbfvflfbfgf□□[fN,É□V,µ,ç□Ú'±,ð□Ý'è,,:é

 fCf“f^□[flfbfg□Ú'±,ìqf“fg

**fKfCfh** □iNIFTY MANAGER,ÅfCf“f^□[flfbfg□]

 □Å□%o,É,“Ç,Ý,¾,¾,ç□ifCf“f^□[flfbfg□Ú'±,ì,½,ß,É□]


 fCf“f^□[flfbfg,É□Ú'±,,:é

 fAfNfZfXf|fCf“fg,ðHyperROAD,É,,:é


 HyperROAD,ÅNIFTY SERVE,É□Ú'±,,:é

 NIFTY SERVE,Æ,ì□Ú'±,ð□|—¹,,:é

 f\_fCf,,f<fAfbfvflfbfgf□□[fN,ì□Ý'è•û-@


 fCf“f^□[flfbfgfZfbfgfAfbvfEfBfU□[fh,Å□Ý'è,,:é


 f\_fCf,,f<fAfbfvflfbfgf□□[fN,É□V,µ,ç□Ú'±,ð□Ý'è,,:é


 fCf“f^□[flfbfg□Ú'±,ìqf“fg




**fKfCfh** iNIFTY MANAGER,ÅfCf“f^[flfbfg]

 Å%º,É,“Ç,Ý,¾,¾,çifCf“f^[flfbfg]Ú’±,ì,½,ß,É

 fCf“f^[flfbfg,ÉÚ’±,,:é

 fAfNfZfXf|fCf“fg,ðHyperROAD,É,,:é


 HyperROAD,ÅNIFTY SERVE,ÉÚ’±,,:é

 NIFTY SERVE,Æ,ìÚ’±,ð|—¹,,:é


 f\_fCf,,f<fAfbfvflfbfgf[]fN,ìÿ’è•û-@


 fCf“f^[flfbfgfZfbfgfAfbvfEfBfU[]fh,Åÿ’è,,:é


 f\_fCf,,f<fAfbfvflfbfgf[]fN,ÉV,µ,çÚ’±,ðÿ’è,,:é


 fCf“f^[flfbfg]Ú’±,ìqf“fg

**fKfCfh** iNIFTY MANAGER,ÅfCf“f^[flfbfg]

 Å%o,É,“Ç,Ý,¾,¾,çifCf“f^[flfbfg]Ú’±,ì,½,ß,É


 fCf“f^[flfbfg,ÉÚ’±,,:é

 fAfNfZfXf|fCf“fg,ðHyperROAD,É,,:é


 HyperROAD,ÅNIFTY SERVE,ÉÚ’±,,:é

 NIFTY SERVE,Æ,ìÚ’±,ð|—¹,,:é


 f\_fCf,,f<fAfbfvflfbfgf[]fN,ìÿ’è•û-@


 fCf“f^[flfbfgfZfbfgfAfbvfEfBfU[]fh,Åÿ’è,,:é


 f\_fCf,,f<fAfbfvflfbfgf[]fN,ÉV,µ,çÚ’±,ðÿ’è,,:é

 fCf“f^[flfbfg]Ú’±,ìqf“fg

**fKfCfh** iNIFTY MANAGER,ÅfCf“f^[flfbfg]

 Å%º,É,“Ç,Ý,¾,¾,çifCf“f^[flfbfg]Ú’±,ì,½,ß,É


 fCf“f^[flfbfg,ÉÚ’±,,:é

 fAfNfZfXf|fCf“fg,ðHyperROAD,É,,:é


 HyperROAD,ÅNIFTY SERVE,ÉÚ’±,,:é

 NIFTY SERVE,Æ,ìÚ’±,ð|—¹,,:é

 f\_fCf,,f<fAfbfvflfbfgf[]fN,ìÿ’è•û-@

 fCf“f^[flfbfgfZfbfgfAfbvfEfBfU[]fh,Åÿ’è,,:é

 f\_fCf,,f<fAfbfvflfbfgf[]fN,ÉV,µ,çÚ’±,ðÿ’è,,:é

 fCf“f^[flfbfg]Ú’±,ìqf“fg

**f\_f~[]fgfsbfN**

