

## -ÚŽŮ

EPSON TWAIN f fCf“fEfBf“fhfE

'SŽ©“@f. f fh

f}fjf...fAf<f. f fh

[fCf f fWf^fCfv] f fCfAf fOf {fbfNfX

[o—í<@Ší] f fCfAf fOf {fbfNfX

[fCf f fW sEä] f fCfAf fOf {fbfNfX

[“Z“x•â³] f fCfAf fOf {fbfNfX

[fjf%o [²@] f fCfAf fOf {fbfNfX

[Y'è•Ù'¶] f fCfAf fOf {fbfNfX

[ŠÅ<<Y'è] f fCfAf fOf {fbfNfX

Žæ.èž.ÝŽè‡

Žæ.èž.Ý~g.ìi.è•ù

fvfCEfrf...[]fEfBf“fhfE

[fCf[][]fW[]sCEä] f\_fCfAf[]fOf{fbfNfX

[“Z“x•â[]³] f\_fCfAf[]fOf{fbfNfX

[fjf%[][]'²[]@] f\_fCfAf[]fOf{fbfNfX

[[]Å“ ’²[]@] f\_fCfAf[]fOf{fbfNfX

Žæ.è[]ž,Ý~g.ì[],è•û

## EPSON TWAIN f[]fCf“fEfBf“fhfE

TWAIN(fgfEfffCf“),Æ,í[]AfXfLfffi,ð[]\$CEä,·,éftfgfEfffA,ì,½,ß,ì[]AfAvfšfP[]fVf#f“fCf“f^[]ftfFfCfX (API)  
,ì<KŠi,Å,·[]B,Ü,½[]AZæ,è[]ž,Ý,ìftfgfEfffAZ©‘ì,àTWAIN,ÆCEÄ,Î,ê,Ü,·[]B

EPSON TWAIN,É,í‘SŽ©“@f,[]fh,Æf}ffj...fAf<f,[]fh,ª, ,è[]A[]Ø,è‘Ö,ì,ª%Å“\,Å,·[]B

f}ffj...fAf<f,[]fh,Å,í[]AZæ,è[]ž,Ý,ìŠeŽí[]Y‘è,ª,Å,«,Ü,·[]BTWAIN,ìŠe<@“\,ð,ª,Ü,Žg,ª,±,Æ,Å  
%æ‘œ,ìŽæ,è[]ž,Ý,ì•iŽ,ªCEü[]ä,μ,Ü,·[]B-Ú“l,Æ—p“r,É[]#,í,¹,ÅŠeŽí<@“\,ðŠ^—p,μ,Å,,¾,¾,¾,ç[]B

EPSON TWAIN,íTWAIN<KŠi,É‘î%ž,μ,Å,ç,Ü,·,ì,Å[]ATWAIN‘î%žftfgfEfffA,©,çCEÄ,Ñ[]o,¹,Ü,·[]B

### f[]f,[]F

fXfLfffi,Éf[]fVf#f“,ìADF,Ü,½,í“\$%ßCE‘[]eftfjfbfg,ð‘•’...μ,Å,ç,é[]è[]#[]A‘SŽ©“@f,[]fh/f}ffj...  
fAf<f,[]fh,ðŠm“F,·,é%æ-Ê,ª•\Ž,³,è,Ü,·[]B

‘SŽ©“@f,[]fh

f}ffj...fAf<f,[]fh

## 'SŽ©“@f,□[fh

'SŽ©“@f,□[fh,Ä,İŽ©“@“I,ÉfvfCEfrf...□[,ðŽÄ□s,μ□A%œ'œ,ð%ð□í□A”»•Ê,μ,ÄŽæ,è□ž,Ý,Ü,·□B

### f□f,□F

fXfLffffi,Éfjfvjvfj+“,ìADF□A,Ü,½,Í“\$%ßCE´□eftfjfbfg,ð´•...μ,Ä,ç,é□è□#,í□A'SŽ©“@f,□[fh/f}fjf...  
fAf<f,□[fh,ðŠm”F,·,é%œ-Ê,ª•\Ž!,³,è,Ü,·□B



'SŽ©“@f,□[fh,ÄŽæ,è□ž,Þ□è□#FCE´□e'ä,ÉCE´□e,ðfZfbfg,μ,Ä□A[Žæ,è□ž,Ý]f{f^f“,ðfNfŠfbfN,μ,Ä,-  
¾,³,ç□B

Žè“@,ÄŽæ,è□ž,Þ□è□#/ADF,â“\$%ßCE´□eftfjfbfg,ðŽg—Þ,·,é□è□#F[f}fjf...  
fAf<f,□[fh]f{f^f“,ðfNfŠfbfN,μ,Ä,,¾,³,ç□B

## CE´□ef^fCfv,ìŽ©“@”FŽ~(DTR)

'SŽ©“@f,□[fh,ÄŽæ,è□ž,Þ,Æ□A^È%œ,ì't,©,çCE´□e,ª,Ç,lf^fCfv,©,ðŽ©“@”FŽ~,μ,Ü,·□B



fjf%□[ŽÊ□^□F  
^è”É“I,Éffj%□[ŽÊ□^  
”□•ŽÊ□^□F  
^è”É“I,É”□•ŽÊ□^



fCf%ofXfg□F  
fOf%oft□Af□fs□A'n□},È,Ç□F”,ì□,È,ç,à,ì



- Žš/□ü%œ□F
- Žš,ì,Ý,ì•□□A”h,è,Ä,Ô,³,è,Ä,ç,È,çŠG,È,Ç



fjf%□[□'—Þ□F  
ffj%□[,ì□V•□AŽGŽ□,È,Ç  
”□•□'—Þ□F  
”□•,ì□V•□AŽGŽ□,È,Ç

\*ŠÖ~A□€-Ú□FŽ©“®”FŽ˘,³,ê,éCE´□ef^fCfvfŠfXfg

□E CE´□e,ªŽÊ□^,Æ,μ,Ä”FŽ˘,³,ê,½□ê□‡,Í□AZÊ□^,¾,˘,ªŽæ,è□ž,Ý”Í´Í,Æ,È,è,Ü,·□B

□E ŽÊ□^,ÉCEX,«,ª, ,ê,ÎŽ©“®”I,É•â□³,μ,Ü,·□BŽÊ□^`ÈŠO,ìCE´□e,à”FŽ˘,³,ê,½□ê□‡,Í□ACE´□e`S´Í,ðŽæ,è□ž,Ý”Í´Í,Æ,μ□ACEX,«,ª, ,ê,ÎŽ©“®”I,É•â□³,μ,Ü,·□B

□E CE´□e,ªfCf%ofXfg,Ü,½,Ífff%□□[□´—b□E””□•□´—p,Æ,μ,Ä”FŽ˘,³,ê,½□ê□‡□ACEX,«,ª, ,ê,ÎŽ©“®”I,É□s,í,ê,Ü,¹,ñ□B

□E CE´□e,ª•¶Žš/□ü%œ,Æ,μ,Ä”FŽ˘,³,ê,½□ê□‡,Í□A•¶Žš”•ª,ðŠí□€Æ,μ,ÄCEX,«□i10”x`É”à,ìCEX,«,ì,Ý□j,ªŽ©“®”I,É•â□³,³,ê,Ü,·□B

□E CE´□e,ª□ü%œ,ì,Ý,Æ”FŽ˘,³,ê,½□ê□‡,Í□Afcf%ofXfg,Æ,μ,ÄŽæ,è□ž,Ü,è,Ü,·□B

□E ”FŽ˘,³,ê,½Žæ,è□ž,Ý”Í´Í,É´Í,μ,Ä□A~I□o,ì²□®,ªŽ©“®”I,É□s,í,ê,Ü,·□B

### f}fjf...fAf<f,□[fh,Ö,ì□Ø,è`Ö,¡

ŽÝ,ì,æ,π,É□ê□‡,É□A`È%œ,ìf\_fCfAf□fOf{fbfNfX,ª•Ž! ,³,ê□Af}fjf...fAf<f,□[fh,Ö,ì□Ø,è`Ö,¡,ð□s,π,±,Æ,ª,Ä,«,Ü,·□B

□E CE´□e,ª”FŽ˘,³,ê,È,©,Á,½□ê□‡

□E Ž©“®”FŽ˘,ðfLfff“fZf<,μ,½□ê□‡

□E ffvfVf‡“,ìADF□A,Ü,½,Í“\$%œßCE´□eftfjfbfg,ð`•’...,μ,Ä,¢,é□ê□‡

%œ-Ê□ä,ì□€-Ú,ðfNfŠfbfN,μ,Ä,,¾,¾,¢□B□à-¾,ª•Ž! ,³,ê,Ü,·□B

CE´□e,ª”FŽ˘,³,ê,È,©,Á,½□ê□‡/Ž©“®”FŽ˘,ðfLfff“fZf<,μ,½□ê□‡



fifvVf‡“,ìADF□A,Ü,½,Í“\$%œßCE´□eftfjfbfg,ð`•’...,μ,Ä,¢,é□ê□‡



[•Â,ŋ,é] f{f^f“

[f}fjf...fAf<f,□[fh] f{f^f“

[Žæ,èŋž,Ý] f{f^f“

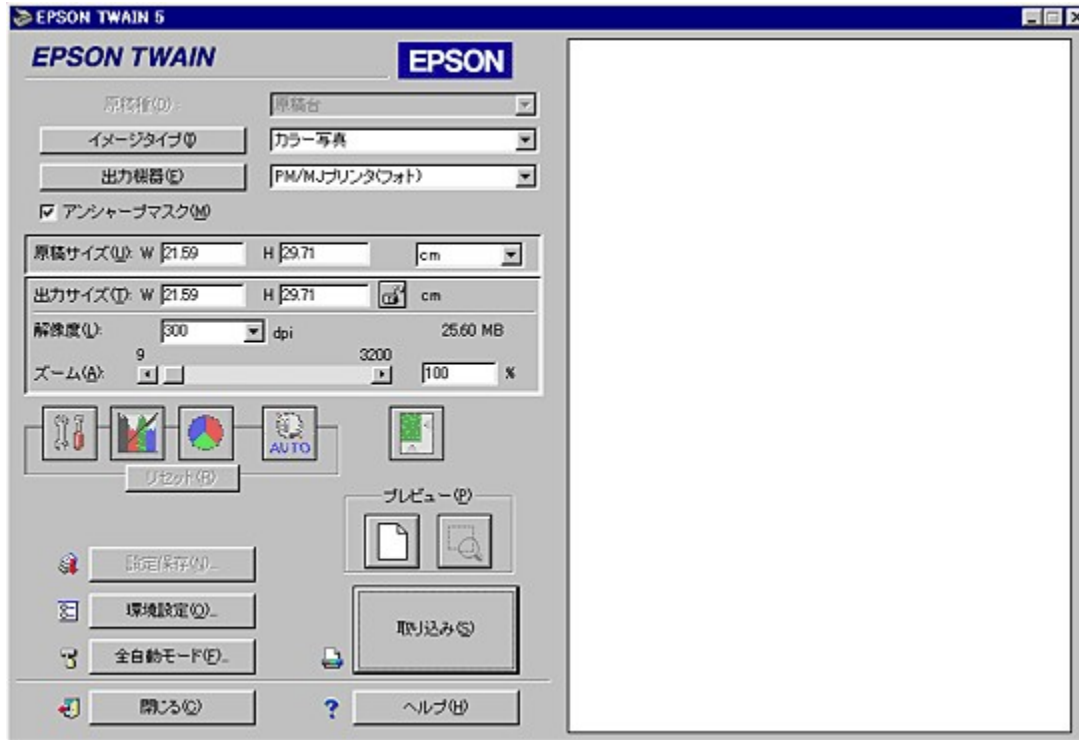
\*ŠÖ~A□€-Ú□F

Žæ,èŋž,ÝŽèŋž

Žæ,èŋž,Ý~g,ìŋ,è•ú

## f}fjf...fAf<f,[]fh

□□×□Ý'èf,□[]fh,Å,í□AZæ,è□ž,Ý,ìŠeŽí□Ý'è,a,Å,«,Ü,·□B%œ-Ê□ä,ì□€-Ú,ðfNfŠfbfN,μ,Ä,,¾,¾,¼,¼,¼□B□à-¾,a•\ Ž,¾,è,Ü,·□B



Œ'qeŽí	fCf□□[]fwf^fCfv
□o—í<@Ší	fAf"fvff□[]fvf}fXfN
Œ'nefTfCfY	□o—íftfCfY
%œ'œ"x	fY□[]f€
[fCf□□[]fWfšŒä] f{f^f"	[ "Z"x•â□³] f{f^f"
[fjf%□[]'²□@] f{f^f"	[Ž©"@"~l□o] f{f^f"
[fŠfZfbfg] f{f^f"	[Ž©"@"í'í'í'ð] f{f^f"
[fvfŒfrf...□□] f{f^f"	[fY□[]f€fvfŒfrf...□□] f{f^f"
[□Ý'è•Ü'¶] f{f^f"	[ŠÅ<<□Ý'è] f{f^f"
[ 'SŽ©"@"@f,□[]fh] f{f^f"	[•Å,¶,é] f{f^f"
[Žæ,è□ž,Ý] f{f^f"	

\*ŠÖ~A□€-Ú□F

Žæ,è□ž,ÝŽè□ž

Žæ,è□ž,Ý~g,ì□,è•ú

[f}fjf...fAf<f,[]fh]f{f^f“

,±,lf{f^f“,đfNfŠfbfN,·,é,Æ[]Af}fjf...fAf<f,[]fhTWAİN,É•İ,í,è,Ü,·[]B



['SŽ©“®f,[]fh]f{f^f“

,±,lf{f^f“,đfNfŠfbfN,·,é,Æ[]A'SŽ©“®f,[]fhTWIN,É•ĩ,í,è,Ü,·[]B

## fAf“fVff□[fvf}fXfN

, ±, ìf`fFfbfNf{fbfNfX, ðf`fFfbfN, ·, é, Æ□A%œ'œ, ðfVff□[fv, É, ·, é, ±, Æ, º, Å, «, Ü, ·□B□mfCf□□[fWf^fCfv□n, ÅfCf %ofXfg, º`l'ð, º, é, Ä, ç, é□é□#□A, Ü, ½, ìff%o□[fXf€□[fWf“fO, ºOn, ìé□#□AfAf“fVff□[fvf}fXfN, íŽg—p, Å, «, Ü, º, ñ□B

\*ŠÖ~A□€-Ú□FfAf“fVff□[fvf}fXfN.ìfTf“fvf<

ŽŸ, ìé□#, í□AfAf“fVff□[fvf}fXfN, ìf`fFfbfN, ðŠO, μ, Ä, , º/4, º, ç□B

□E Žæ, è□ž, ñ, º/4%œ'œ, Éf, fAfCE□i-Ô-Ú□ó, ì%oA%oe□j, º“□¶, ·, é□é□#

, ±, ìé□#□Af`fFfbfN, ðŠO, ·, Æf, fAfCE, ð-Ú—š, ½, È, , Å, «, Ü, ·□B, » , é, Å, àf, fAfCE, º-Ú— š, Åé□#, í□A□mfCf□□[fWf^fCfv□nf\_fCfAf□fO, ìf, fAfCE□œ<Ž<@“\, ðOn , É, μ, Ä, , º/4, º, ç□B

□E □mfCf□□[fWf^fCfv□n, ì□mf, fmfNf□fifvfVf#f“□n, ð□mTET□n, É□Ý'è, μ, Ä, , é□é□#

TET , í“wCEi□F, ð□œ<Ž, ·, é<@“\, Å, ·, º□ATET , ð—

LCÉø, É, μ, Ä, à“wCEi□F, ð□œ<Ž, μ, «, é, È, ç□é□#, í□Af`fFfbfN, ðŠO, ·, ÆCEø%œ, º□o, é□é□#, º, , è, Ü, ·□B

## Ž“@”FŽ˘,³,ê,éCE´ef^fCfvfŠfXfg

Ž“@”FŽ˘,³,ê,éCE´ef^fCfv,É,íA^È%º,ìÝ'è,ª, ,ç, ©, ¶, ß'è<` ,³,ê,Ä,ç,Û,·B

CE´e f^fCfv	CEX,« •â³	±Ý¼-°ìß ï½	•\CE»F	Ó±Úæ<Ž	¶x° ½Ñº¼pÝ, p	Ž“@”~llo μìß¼@Ý	%ð'æ“x
¶x°ŽÊ^	•â³, ,é	On	24bit¶x°	Off	Off	ŽÊ^	300dpi
”¶•ŽÊ^	•â³, ,é	On	8bit ,pÚ°	Off	Off	ŽÊ^	300dpi
fCf%ofXfg	•â³, μ, È, ç	Off	24bit¶x°	Off	On	¶—p	150dpi
•¶Žš/ü %œ	•â³, ,é	-	f, fmfNf	¶	Off	¶	400dpi
¶x°¶—p	•â³, μ, È, ç	On	24bit¶x°	On	Off	¶—p	150dpi
”¶•¶—p	•â³, μ, È, ç	On	8bit ,pÚ°	On	Off	¶—p	150dpi

• i j " C E ' e Z æ , è ž , ý • a , ¯ , Ä Z æ , è ž , p ^ , Ü , Æ , ß , Ä Z æ , è ž , p

C E X , « • â ã • â ã , • , é ^ • â ã , µ , È , ç

• i ž ě

□ , • i ^ Ê

□ , • i ^ Ê

□ , • i ^ Ê

f h f

% o f t f g

□ , • i ^ Ê

□ , • i ^ Ê

[ C E ' e ž í ]

f X f L f f f i , É f l f v f v f f " , Ì A D F , Ü , ½ , Í " \$ % ß C E ' e f t f j f b f g , ð ' • ' . . . , µ , Ä , ç , È , ç ê ð ð , Í Õ ' è • s - v , Å , • i f O f C E [ • \
Ž ! , ³ , è , Ü , • B f X f L f f f i , Ì < @ Ž í , É , æ , Á , Ä , Í A D F , Ü , ½ , Í " \$ % ß C E ' e f t f j f b f g , É ' Í % ß , µ , Ä , ç
, Ü , ¹ , ñ B B i B f l f v f v f f " , ð Ž g , Á , Ä C E ' e , ð Ž æ , è ž , p , © , Ç , x , © , ð ' l ' ð , µ , Ü , • B
f l f v f v f f " , ð ' • ' . . . , µ , Ä , ç , Ä , à A " ½ Ž È C E ' e i Ž t , È , Ç , Ì C ð , ð " ½ Ž È , • é C E ' e i j , ð f X f L f f f i , Ì C E ' e ' à i f K f % o f X -
È j j , É f Z f b f g , µ , Ä Z æ , è ž , p ê ð ð , Í A m C E ' e ' ä ñ n , ð ' l ' ð , µ , Ä , , ¾ , ³ , ç B

□ m C E ' e ' ä ñ

" ½ Ž È C E ' e , ð f X f L f f f i , Ì C E ' e ' ä , É f Z f b f g , µ , Ä Z æ , è ž , p ê ð ð , É ' l ' ð , µ , Ü , • B

□ m " \$ % ß C E ' e f t f j f b f g - X X □ n

" \$ % ß C E ' e f t f j f b f g , ð Ž g - p , µ , Ä f t f B f < f € , ð Ž æ , è ž , p ê ð ð , É ' l ' ð , µ , Ü , • B

f l f W f t f B f < f € i f X f % o f C f h j j , ð Ž æ , è ž , p ê ð ð , Í m " \$ % ß C E ' e f t f j f b f g - f l f W f t f B f < f € n , ð A f l f K f t f B f < f €
, ð Ž æ , è ž , p ê ð ð , Í m " \$ % ß C E ' e f t f j f b f g - f l f K f t f B f < f € n , ð ' l ' ð , µ , Ä , , ¾ , ³ , ç B

f f f , □ F

f t f B f < f € , ð Ž æ , è ž , p Ž Ž , Í A f t f B f < f € , l • " • a i Ž æ , è ž , p • " • a j , ¾ , ¯ , ð Ž æ , è ž , ý ~ g , É Ž w ' è , µ , Ä f Y [ f € f v f C E f r f . . .
□ [ , µ , ½ ð ä , Ä A Ž © " @ ~ l □ o f { f ^ f " , ð Ž g - p , µ , Ä ~ l □ o ^ ² □ @ , µ , Ä , , ¾ , ³ , ç B " Á , É f l f K f t f B f < f €
, Ì ê ð ð , Í A Ž æ , è ž , ý ~ g , a f t f B f < f € f z f \_ , É , © , © , ç , È , ç , æ , x , É , µ , Ä , , ¾ , ³ , ç B

□ m A D F □ n

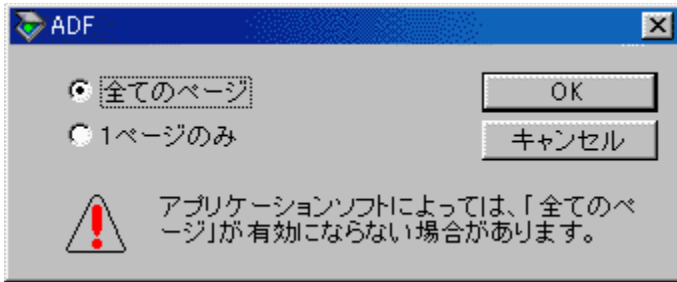
C E ' e , ð A D F , © , ç Ž æ , è ž , p ê ð ð , É ' l ' ð , µ , Ü , • B

, " Ž g , ç , Ì f X f L f f f i - p , Ì A D F , a - ¼ - È Ž æ , è ž , ý , É ' Í % ß , µ , Ä , ç , é ê ð ð A C E ' e , l • Ð - Ê , ð Ž æ , è ž , p ê ð ð , Í m A D F - • Ð -
È n , ð A - ¼ - Ê , ð Ž æ , è ž , p ê ð ð , Í m A D F - - ¼ - Ê n , ð ' l ' ð , µ , Ä , , ¾ , ³ , ç B

\* Š Ö ~ A □ € - Ú □ F A D F , Ä , Ì A ' ± Ž æ , è ž , ý

# ADF, Ā, Ì, A' ± Žæ, è, ž, Ý

CE 'ŋeŽí, ðADF, ÉŋÝ'è, μ, ĀŋmŽæ, èŋž, Ýŋnf{f^f", ðfNfŠfbfN, ., é, ÆŋAZŽ, Ì%œ-Ê, a•\Ží, ³, è, Ü, .ŋB



☐E TWAIN'í%žfŋftfg, a•jŋ"Žæ, èŋž, Ý, É'í%ž, μ, Ā, ç, éŋèŋŋ, íŋAŋm'S, Ā, Ìfyŋ[ŋWŋn, ð'í'ð, μŋAŋmOKŋnf{f^f", ðfNfŠfbfN, μ, Ā, , ³/4, ³, çŋBADF, ÉfZfbfg, ³, è, Ā, ç, é, ., x, Ā, ÌCE'ŋe, ðŋA'~A'±, μ, ĀŽæ, èŋž, Ý, Ü, .ŋB

☐E TWAIN'í%žfŋftfg, a•jŋ"Žæ, èŋž, Ý, É'í%ž, μ, Ā, ç, È, çŋèŋŋ, íŋACE'ŋefZfbfg-ŋŋ", ð1-ŋ, ³/4, , É, μ, ½ŋã, ĀŋAŋm1fyŋ[ŋW, Ì, Ýŋn, ð'í'ð, μ, ĀŋmOKŋnf{f^f", ðfNfŠfbfN, μ, Ü, .ŋB1-ŋ, , ĀŋA, ±, Ìžèŋŋ, ðŋE, è•Ō, μ, Ā, , ³/4, ³, çŋB

## fŋf, ŋF

☐E fXfLfffi, Ì•@Ží, É, æ, Ā, Ā, íADF, É'í%ž, μ, Ā, ç, Ü, ¹, ñŋB

☐E , "Žg, ç, ÌADF, a-¼-ÊŽæ, èŋž, Ý, É'í%ž, μ, Ā, ç, éŋèŋŋ, íŋA'ŋ^Ó, a•K-v, Ā, ., Ì, ĀADF, É•t'®, Ìžæ^μŋà-¾ŋ', ð, ²-ŋ, , ³/4, ³, çŋB

☐E TWAIN'í%žfŋftfg, a•jŋ"Žæ, èŋž, Ý, É'í%ž, μ, Ā, ç, é, ©, Ç, x, ©, íŋATWAIN'í%žfŋftfg, Ìžæ^μŋà-¾ŋ', Ā, ²Šm"ŋF, -, ³/4, ³, çŋB

## [fCf][fWf^fCfv]

Žæ, èž, p%œ'œ, ìF", È, Ç, ðÝ'è, μ, Û, ·B

## [mfCf][fWf^fCfv]nfŠXfg

, , ç, ©, ¶, ßAfj%[ŽÊ^A"·ŽÊ^A"·, ìü%œ, â·¶ŽšCE' e, È, Ç, ÌŽæ, èž, Ý, É"K, μ, ½Ý'è, ¶ŠXfg, É—  
p^Ó, ³, è, Ä, ç, Û, ·B'Êí, í, ±, ì't, ©, ç'ì'ð, μ, Ä, , ¾, ¾, çB

## \*ŠÖ~A€-ÚFfCf][fWf^fCfv]ŠXfg

## [mfCf][fWf^fCfv]nf{f^f"

fŠXfg, É—p^Ó, ³, è, Ä, ç, éÝ'è, ð·ïX, μ, ½, çê±, âAV<K"o~^, Û, ½, Ìíœ, μ, ½, çê±, ÌA, ±  
, Ì{f^f", ðNfŠfbfN, μ, Ä, , ¾, ¾, çB[mfCf][fWf^fCfv]nf\_fCfAfO, a·\  
Ž, ³, èAÝ'è, ì·ïXAV<K"o~^, Û, ½, Ìíœ, a, Ä, «, Û, ·B

[mfCf][fWf^fCfv]nf\_fCfAfO, ÌÚx, ÌA[mfCf][fWf^fCfv]nf\_fCfAfO, Ìmfwf·fvnf{f^f", ð%ÿ, μ, Ä·\  
Ž, ³, è, éfwf·fv, ð, ²—, , ¾, ¾, çB

# fCf[][]fWf^fCfvfŠfXfg

fCf[][]fWf^fCfvfŠfXfg, íA^È%º, ìY'è,ª, ,ç, ©, ¶, ß'è< ,³, è, Ä, †, Ü, ·□B

fCf[][]fWf^fCfv-¼	□F	□à-¾
fjf%º[]ŽÊ^ □i42bit□ *	fjf%º[]	<b>42bit, Ü, ½, í36bit, ÄŽæ, èž, Y, Ü, ·□i&lt;@Ží, É, æ, Á, Ä^Ü, È, è, Ü, ·□B·Ží, ³, è, È, †è†, à, , è, Ü, ·□j□BftfHfgfCf^fbf^f ftfg, ÄfCfxf·â³, È, Ç, ð□s, Á, ½Cä, É"- □¶, ·, éŠK'²"ð, Ñ□j□fXfgfOf%œ, ìŽ·"², □j, ð□, È, ·, Ä, «, éf□fŠfbfg,ª, , è, Ü, ·□B</b>
fjf%º[]ŽÊ^	fjf%º[]	<b>1677 -œ□F, ìfjf%º[]I, ÄŽæ, èž, Y, Ü, ·□B</b> fjf%º[]C '□e, ì□è†□A'Éí, í, ±, ì□Y'è, Ä□·ª, È%ºæŽì,ª"¾, ç, è, Ü, ·□B
fjf%º[]□'—p	fjf%º[]	<b>1677 -œ□F, ìfjf%º[]I, ÄŽæ, èž, Y, Ü, ·□B</b> fjf%º[]ŽÊ^□, Ä, ìŽæ, èž, Y, Äf, fAfCfjpf^□f",ª"- □¶, µ, ½□è†, É'í, ñ, Ä, ,¾,³, †□B, È, "□Af, fAfC□œ<Ž, ìf ftfgfEfffA, Ä□—□, µ, Ü, ·, ì, Ä□AŽæ, èž, Y, É□- ,µŽžŠÖ,ª, ©, ©, è, Ü, ·□B
"□·ŽÊ^ □i14bit□ *	fOfC□[]	<b>14bit, Ü, ½, í12bit, Ä□A""□·ŽÊ^, ì, æ, µ, ÈŽæ, èž, Y, Ü, ·□i&lt;@Ží, É, æ, Á, Ä^Ü, È, è, Ü, ·□B·\ Ží, ³, è, È, †è†, à, , è, Ü, ·□j□BftfHfgfCf^fbf^f ftfg, ÄfCfxf·â³, È, Ç, ð□s, Á, ½Cä, É"- □¶, ·, éŠK'²"ð, Ñ□j□fXfgfOf%œ, ìŽ·"², □j, ð□, È, ·, Ä, «, éf□fŠfbfg,ª, , è, Ü, ·□B</b>
"□·ŽÊ^	fOfC□[]	<b>256 ŠK'², Ä□A""□·ŽÊ^, ì, æ, µ, ÈŽæ, èž, Y, Ü, ·□B""□·ŽÊ^, ì□è†□A'Éí, í, ±, ì□Y'è, Ä□·ª, È%ºæŽì,ª"¾, ç, è, Ü, ·□B</b>
"□·□'—p	fOfC□[]	<b>256 ŠK'², Ä□A""□·, ÈŽæ, èž, Y, Ü, ·□B""□·ŽÊ^, Ä, ìŽæ, èž, Y, Äf, fAfCfjpf^□f",ª"- □¶, µ, ½□è†, É'í, ñ, Ä, - ,¾,³, †□B, È, "□Af, fAfC□œ&lt;Ž, ìf ftfgfEfffA, Ä□—□, µ, Ü, ·, ì, Ä□AŽæ, èž, Y, É□, µŽžŠÖ,ª, ©, ©, è, Ü, ·□B</b>
fCf%ofXfg	fjf%º[]	<b>1677 -œ□F, ìfjf%º[]I, ÄŽæ, èž, Y, Ü, ·□B</b> fOf%oft□A□f□S□A'n□}, È, Ç, ìŽæ, èž, Y, É"K, µ, Ä, †, Ü, ·□B
•¶Žš/□ü%ºæ	f, fmfNf□	<b>•¶ŽšCÉ'□e, ðŽæ, èž, p□è†, É'í'ð, µ, Ü, ·□B""□·2 'ì□i""', ©□·□j, ìff□f^, ÄŽæ, èž, Y, Ü, ·□B</b>
•¶Žš("wCei□œ<Ž)	f, fmfNf□	<b>•¶ŽšCÉ'□e, ðŽæ, èž, p□è†, É'í'ð, µ, Ü, ·□B""□·2 'ì□i""', ©□·□j, ìff□f^, ÄŽæ, èž, Y, Ü, ·□B""wCei□F, í□œ&lt;Ž, µ, Ä·¶Žš, ì, Y'Š□o, µ, Ü, ·□B</b>
COPY & FAX	f, fmfNf□	<b>•¶Žš,Æ%ºæ'œ,ª□—□Y, µ, Ä, †, éCÉ'□e, ðŽæ, èž, p□è†, É'í'ð, µ, Ü, ·□B·¶Žš, í""□·2 'ì□A%ºæ'œ·"ª, ì&lt;^Ž—'†ŠÖ'²□^—□, ð, µ, ÄŽæ, èž, Y, Ü, ·□B</b>

\* TWAIN 'í%ºžf ftfg,ªŠe□F12bit^È□ä, Ä, ì"ü—í, É'í%ºž, µ, Ä, †, È, †□è†, í□A fjf%º[]ŽÊ^□i·W□€□j, Ü, ½, í""□·ŽÊ^□i·W□€□j, ÄŽæ, èž, ñ, Ä, ,¾,³, †□B, È, "□AfffBfXfvfCfC□ä, Ä, ìfjf%º[]ŽÊ^□i·W□€□j, Ü, ½, í""□·ŽÊ^□i·W□€□j,Æ, ì^á, †, íª, ©, è, Ü, , ñ□B□iOS □AfffBfXfvfCfCfAf\_fvf^,ª'í%ºž, Ä, «, È, †, ½, ß□j

□j TWAIN 'í%ºžf ftfg,ªŠe□F12bit^È□ä, Ä, ì"ü—í, É'í%ºž, µ, Ä, †, é, ©, Ç, µ, ©, í□ATWAIN 'í%ºžf ftfg, ìŽæ^µ□à-

¾', ÅŠm" F, ., é, ©A, Ü, ½, Í\ftfgfEjFfAf□□[f]□L, É, " -â, ç□±, í, ¹, ¾, ³, ç□B



## [o—í@Ší]

%æ'œ,ðÅ"i,Éo—í,·,é<@Šíi%æ'œ,ì—p"rj,ðý'è,μ,Û,·B,±,ìý'è,É,æ,Á,ÄA—í<@Ší,ÉÅ"K,È  
%ø'œ"x,ÆfAf"fvff[fvf}fXfN,ªý'è,³,è,Û,·B

## m—í@ŠínfŠfXfg

,,ç,©,¶,ßAfXfNfŠ[f"·\Ž!AfvfŠf"f^,Å,ì^óüA»"ÅACEöŠw·¶Žš"Ź",È,Ç,ì—p"r,É"K,μ,½ý'è,ªfŠfXfg,É  
—p^Ó,³,è,Ä,ç,Û,·B'Éí,í,±,ì't,©,ç'l'ð,μ,Ä,,¾,³,çBÅ"K,È  
%ø'œ"x,ÆfAf"fvff[fvf}fXfN,ªŽ©"®ý'è,³,è,Û,·B

\*ŠÖ~A€-ÚF'è<í.Ý,ìo—í<@Ší

## m—í@Šínf{f^f"

fŠfXfg,É—p^Ó,³,è,Ä,ç,éý'è,ð·ïX,μ,½,çê±,âAV<K"o~^,Û,½,ííœ,μ,½,çê±,íA,±  
,ìf{f^f",ðfNfŠfbfN,μ,Ä,,¾,³,çBm—í<@Šínf\_fCfAfO,ª·\  
Ž,³,èAý'è,ì·ïXAV<K"o~^,Û,½,ííœ,ª,Ä,«,Û,·B

m—í<@Šínf\_fCfAfO,ìÚx,íAm—í<@Šínf\_fCfAfO,ìmfwf<fvnf{f^f",ð%ÿ,μ,Ä·\  
Ž,³,è,éfwf<fv,ð,²—,,¾,³,çB

# 'è<`ìj,ìo—í@Ší

o—í<@Ší,íA^È%º,ìY'è,ª, ,ç,©,¶,ß'è<` ,³,è,Ä,ç,Ü,·B

o—í<@Ší-¼	%øð'œ"x	òà -¾
	ÓÉ, Û pÚ° /ŽÊ^	
fXfNfŠf"	96dpi	96dpi
FAX	200dpi	200dpi
OCR	400dpi	400dpi
PM/MJ fvfŠf"f^ iftf@fCf"j	360dpi	150dpi
PM/MJ fvfŠf"f^ iftfHfgj	720dpi	300dpi
fCE[fU[fvfŠf"f^	600dpi	200dpi

\* o—ífZf"f^ [ ,Éo,³,è,é•û,Ö

%øð'œ"x,íA^è"Ê,ÉAüü",)2 "{,ªA"K,Æ,³,è,Ä,ç,Ü,·,ªA•K, ,µ,à2 "{,ªA"K,Æ,íCEÀ,è,Ü,¹,ñB o—  
ífZf"f^ [ ,Æ,²'S'k,ìã,ÄCE^ ,ß,Ä,,¾,¾,çB

## [Ā'ēfTfCfY]

Žæ, èž, p—î^æ, ĩfTfCfY ĩc%o; ĩfTfCfY ĩj, a•\Ž!, ³, è, Ü, ·B•ÖW, à%Å" \, Å, ·B

## □mĀ'ēfTfCfY□n

fvfĀefrf... [fEfbf"fhfE, ÅŽæ, èž, Ý~g, ðì□-, ·, é, ÆA, ±, ±, ÉŽæ, èž, p—î^æ, ĩfTfCfY, a~A" ®, μ, Ä•\Ž!, ³, è, Ü, ·B  
, ±, ±, É"C^Ó, ĩ□" \, ð"ü—í, μ, ÄAŽæ, èž, Ý~g, ðì□-, ·, é, ±, Æ, à%Å" \, Å, ·B

## □m'P^Ê]

Ā'ēfTfCfY, ĩ'P^Ê, ðAfsfNfZf<□Efcf" f` □Ecm, ©, ç'l'ð, Å, «, Ü, ·Bm□o—  
Í<@Ší□n, ĩ□Y'è, a□mfXfNfš□[f"□n, ĩ□é□#, ĩfsfNfZf<ðA, »; ì'¼, ĩ□é□#, Ícm, ð'l'ð, μ, Ä,, ¾, ¾, ç□B  
'P^Ê, ð•İ, ;, é, ÆA[Ā'ēfTfCfY] , , æ, Ñ [□o—fTfCfY] , ĩ□" \, a~A" ®, μ, Ä•İ%o», μ, Ü, ·B

## [o—íftfCFY]

Žæ, èž, ÝĀä, ì%æ'œftfCFYi c%o, ìftfCFYj, a•\Ž!, ³, è, Ü, ·B•ÒW, à%Å" \, Å, ·B

## [m o—íftfCFY n]

fvfĀfrf... [fEfbf"fhfE, ÅŽæ, èž, Ý~g, ðì—, ·, é, ĀE A, ±, ±, ÉŽæ, èž, ÝĀä, ì%æ'œftfCFY, a~A" ®, μ, Å•\ Ž!, ³, è, Ü, ·B mfY [f€n, ìÝ'è, a 100%, ìê# , íĀCE'œftfCFY, Ā" , ĩ"i, a•\Ž!, ³, è, Ü, ·B

, ±, ±, É" C^Ó, ì"i, ð"ü—í, μ, Å ĀŽæ, èž, ÝĀä, ì%æ'œftfCFY, ðÝ'è, ·, é, ±, ĀE, à%Å" \, Å, ·B

## [mf fbN nf {f^f"

, ±, ìf {f^f" , ðfNšfbN, ·, é, ĀE o—íftfCFY, af fbN, ³, è Ā o— íftfCFYĀ'è, ì, Ü, Ü ĀŽæ, èž, Ý~g, ðŠg'â^k—, Å, «, Ü, ·B, ±, ìŽž Ā c%o; "ä, í^ŪŽ, ³, è, é, ĀE, ĀE, à, É AfY [f€ , ìÝ'è, a~A" ®, μ, Å•ì%o», μ, Ü, ·B

## [m%æ'œftfCFY n i\*\*\* MB ,È,Ç \*F"Žšj]

, ±, ±, É, íĀCE»Ý, ìÝ'è, ÅŽæ, èž, ñ, ¾%æ'œ, ìftf@fCf<—e—É, a•\Ž!, ³, è, Ü, ·B, ½, ¾, μ Ā %æ'œ, ð•Ū'ĩ, ·, é ê# Ā•Ū'ĩCE`Ž® , É, æ, Á, Ā, ìftfCFY, a^Ū, È, è, Ü, ·ij PEGE`Ž®, Å^³k, μ, ½ ê# , È, Ç j B

## f f, F

Ā'á, Å, à Ā•\Ž!, ³, è, éftf@fCf<ftfCFY, ì 2 "{^Èä, ìfn [fhffBfXfN<ó, «—e—É, a, È, ç, ĀE Ā%æ'œ, ðŽæ, èž, p, ± , ĀE, a, Å, «, Ü, ¹, ñ B



## [fY][f€]

%œ'œ,đšg'â,Û,½,í□k□¬,μ,ĂŽæ,è□ž,p,±,Æ,ª,Ā,«,Û,·□B

fXf%ofCfhfo□[,Û,½,í-î^óf{f^f",É,æ,è□AŠg'â—!□A□k□¬—!,đ 1% 'P^Ê,Ā□Ý'è,μ,Û,·□B

,È,"□A%œđ'œ"x,đ□ă,°,·,¬,é,Æ□A100%^È□ă,É□Ý'è,Ā,«,È,¢□ê□‡,ª, ,è,Û,·□B

## [fvfCEfrf...[] f{f^f“

,±,İf{f^f“,đfNfŠfbfN,·,é,Æ□ACE´□e,đfvfCEfrf...[]i'á%đ'œ“x,Å%¼Žæ,èž,Ý□j,μ□AfvfCEfrf...  
[]fEfBf“fhfE,É•\Ži,μ,Ü,·□B

,±,İŽž□A~I□o□i%œ'œ,İ-¾^Ã□j,aŽ©“®'²□®,³,ê,Ü,·□B

[Žæ, èž, Ý] f{f^f“

, ±, ÿf{f^f“, ðfNfŠfbfN, µ, Ä%œ‘œ, ðŽæ, èž, Ý, Ü, ·B



,±,lf{f^f“,đfNfŠfbfN,·,é,Æ□ACE»□Ý‘l‘đ,<sup>3</sup>,ê,Ä,ç,éŽæ,è□ž,Ý~g,đŽæ,è□ž,Ý,Ü,·□B

[‘S,ÄŽæ,èž,Ý] f{f^f“

,±,lf{f^f“,ðfNfŠfbfN,·,é,Æ□A□î□¬,³,ê,Ä,ç,é,·,×,Ä,ìŽæ,èž,Ý~g,ðŽæ,èž,Ý,Ü,·□B

[•Â,¶,é] f{f^f“

EPSON TWAIN,ð•Â,¶,Û,·□B

# [Ÿ'è•Ù'ŋ] f{f^f“

, ±, ĩf{f^f“, đfNfŠfbfN, ·, é, Æ□A□m□Ÿ'è•Ù'ŋ□nf\_fCfAf□fO, ¢•\Žı, ³, ê, Û, ·□B

, ±, ĩf\_fCfAf□fO, Ā, í□ACE»Ÿ, ÌEPSON TWAIN, ĩŸ'è□iŽæ, è□ž, Ÿ~g□A□F□“□A%đ'œ“x□A  
%œæŽı, È, Ç, ·, x, Ā, ĩŸ'è□j, É□A-¼'O, đ•t, ¯, Ā•Ù'ŋ, ·, é, ±, Æ, ¢, Ā, «, Û, ·□B

, Û, ½□A•Ù'ŋ, μ, ½Ÿ'è, đ•ı;□''ı'đ, μ, Ā□A, » , ê, ¼, ê, ĩŸ'è, Ā, ĩ^èŠžæ, è□ž, Ÿ, ¢%Ā“\, Ā, ·□B

Ÿ'è, đ□Ā—~—p, Ā, «, é, ĩ, Ā□AŽŸ, ĩ, æ, x, Èf□fŠfbfg, ¢, , è, Û, ·□B

Žæ, è□ž, Ÿ~g, ĩ□Ā—~—p□F Žæ, è□ž, Ÿ~g, ĩ^É'u, đ, ·, x, Ā•Ù'ŋ, Ā, «, é, ĩ, Ā□AŽÉ□^□E-  
¼Žh, È, Ç, đŽæ, è□ž, ÞŽž, É□A□í, É“¯, ŋ^É'u□^“¯, ŋCEü, «, ÉfZfbfg, ·, ê, ĩ□AŽæ, è□ž, Ÿ~  
g, đ“s“x□ı□¯, ·, é•K—v, ¢, , è, Û, ¹, ñ□B

□o—ÍfTfCfY, ĩ□Ā—~—p□F •ÇŽt□^ffXfNfgfbvfjsfNf`ff—p□AA4^óü—p, È, Ç, ĩŸ'è, đ•Ù'ŋ, μ, Ā, ¨, ¯, Ĩ□A□o—  
ÍfTfCfY, đ“s“x□Ÿ'è, ·, é•K—v, ¢, , è, Û, ¹, ñ□iŽæ, è□ž, Ÿ~g, đ“÷'²□@, ·, é, ¾, ¯□□B

□m□Ÿ'è•Ù'ŋ□nf\_fCfAf□fO, ĩ□Ú□x, í□A□m□Ÿ'è•Ù'ŋ□nf\_fCfAf□fO, ĩ□mfwf˘fv□nf{f^f“, đ%Ÿ, μ, Ā•\  
Žı, ³, ê, éfwf˘fv, đ, ²—, , ¾, ³, ¢□B

□ı: □mfCf□□ıfwf^fCfv□n , ¢Cf%ofXfg, Ā□Ajjf%□ıfXf€□ıfwf“fO, ¢On, ĩ□é□ž, í□A□Ÿ'è•Ù'ŋ, ¢, Ā, «, Û, ¹, ñ□B

# [ŠĀ«Ÿ'è] f{f^f“

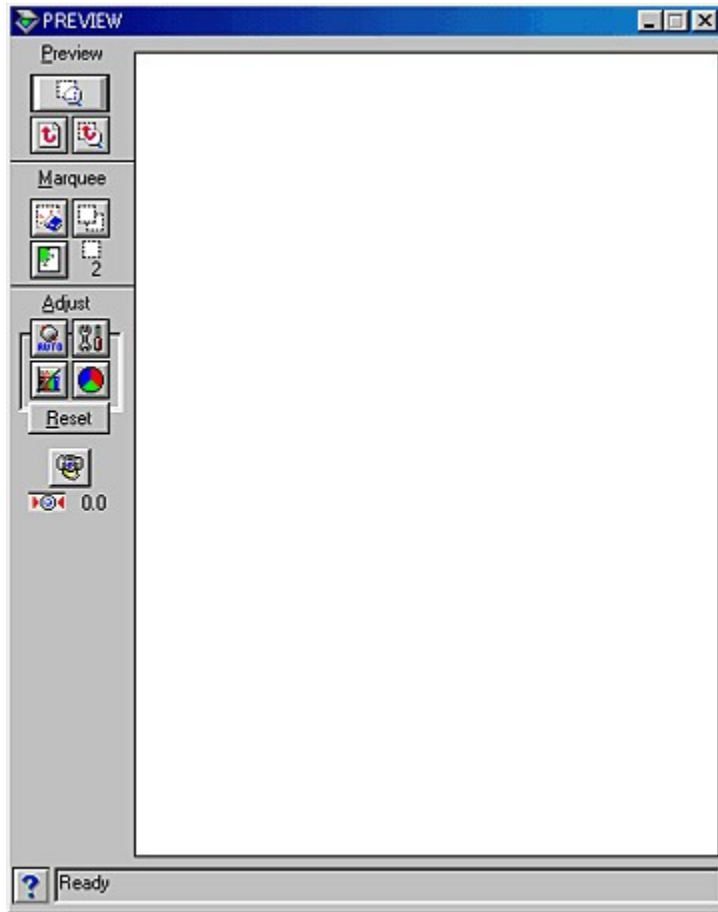
, ±, ĩf{f^f“, đfNfŠfbfN, ., é, ÆA mŠĀ«Ÿ'ènf\_fCfAfO, a•\Ž, ³, ê, Ü, .B

, ±, ĩf\_fCfAfO, Ā, íAEPSON TWAIN, ì“® ĩŠĀ««, đŸ'è, ., é, ±, Æ, a, Ā, «, Ü, .B

mŠĀ«Ÿ'ènf\_fCfAfO, ìÚx, íA mŠĀ«Ÿ'ènf\_fCfAfO, ìmfwf\_fvnf{f^f“, đ%öŸ, μ, Ā•\ Ž, ³, ê, éfwf\_fv, đ, ²—, , ¾, ³, çB

## fvfœfrf... [fEfBf“fhfE

%œ-Êã, ì€-Ú, ðfNfŠfbfN, μ, Ä, , ¾, ³, ç B à-¾, a•Ž, ³, ê, Ü, · B



## fvfœfrf... [

[fY [f€fvfœfrf... [ ] f{f^f“

[‘S%œ-Êfvfœfrf... [ ] [É-B,é] f{f^f“ [fY [f€fvfœfrf... [ ] [É-B,é] f{f^f“

## Žæ,èž,Ý~g

[ Á<Ž] f{f^f“

[fRfs [ ] f{f^f“

[Ž© “ @” í í ‘ ð ] f{f^f“

[~g [ ] fCf“ fWfP [f^ ]

## ’² [®

[Ž© “ @ ~ ] [o]

[fCf [ ] [fW [ ] \$œä]

[“Z“ x•â [³]

[f]f%œ [ ] [’² [®]

[fŠfZfbfg]

["\_@^" \_^'u'l'ðl f{f^f"

\*ŠÖ~A]€-Ú]F

Žæ,è]ž,Ý~g,]i,è•û

## [fY[f€fvfƇfrf...[] f{f^f“

Žæ,èž,þ—î^æ,ª¬,³,ƒê±,íA,±,ìf{f^f“,ðNfŠfbfN,µ,Ä,,¾,³,ƒBCE´e,ðÄfvfƇfrf...  
[][,µACE»Ý‘I’ð,³,ê,Ä,ƒ,éŽæ,èž,Ý~g,ðfY[f€•Ž!,µ,Ü,·B

,±,ìŽžA~I□o□i%æ‘œ,ì-¾^Äj,ªŽ©“®²@,³,ê,Ü,·B

,È,“AŽæ,èž,Ý~g,ª%o;’,ìê±,íAfvfƇfrf...[]fEfbf“fhfE,à%o;’,É,È,è,Ü,·B



['S%œ-Êfvfœfrf...[,É-ß,é] f{f^f“

fY[f€fvfœfrf...[,μ,Ä,à'S-Ê,ìfvfœfrf...[%œ-Ê,í•ÛŽ,³,ê,Ä,“,èA,±,ìf{f^f“,Å'S-Êfvfœfrf...[%œ-Ê,É-ß,è,Û,·B

## [fY[f€fvfCEfrf...[,[É-ß,é] f{f^f“

fY[f€fvfCEfrf...[CEä,É‘S-ÊfvfCEfrf...[‰æ-Ê,É-ß,µ,Ä,àAfY[f€fvfCEfrf...[‰æ-Ê,Í•ÛŽ,³,ê,Ä,“,èA,±,  
,lf{f^f“,ÅfY[f€fvfCEfrf...[‰æ-Ê,É-ß,è,Û,·B,½,¾,µŽŸ,ìê#A,±,lf{f^f“,ÍOfCE[•Ž!,³,ê,Û,·B

□E Žæ,èž,Ÿ~g,ª•j“, ,éê# ,ÅA•ÛŽ,³,ê,Ä,ç,éfY[f€fvfCEfrf...[‰æ-Ê—p,ì~g,ª‘l’ð,³,ê,Ä,ç,È,çê#

□E •ÛŽ,³,ê,Ä,ç,éfY[f€fvfCEfrf...[‰æ-Ê—p,ì~g,ð^Ú“ ®,µ,½,èAŠg‘â^k¬,µ,½ê#

[Žæ, èž, ÝgÁŽ] f{f^f“

, ±, ÿf{f^f“, ðfNfŠfbfN, ·, é, ÆACE»Ý‘‘ð, ³, ê, Ä, ç, éŽæ, èž, Ýg, ðÁŽ, µ, Û, ·B

## [Žæ, èž, Ÿ~ gfrfs[] f{f^f“

, ±, ÿ{f^f“, ðfNfŠfbfN, ·, é, Æ[]ACE»[]Ý‘‘ð, ð, ê, Ä, ç, éŽæ, èž, Ÿ~g, ðfRfs[], µ, Ü, ·[]B, ç, , Ä, Å, àfRfs[][%oÄ“\, Å, ·[]B

—á, ÿ, î^ê-Ê, É·À, ×, ½ŽÊ^, â-¼Žh, ðŽæ, èž, p, æ, x, Ê[]é[]‡, É·Ö—~, Å, ·[]B

ŽŸ, ÿL[], ð%oŸ, µ, Ê, ð, çfRfs[]f{f^f“, ðfNfŠfbfN, ·, é, Æ[]A... ·½·ûCEü, Ü, ½, í, ‘¼·ûCEü, ÉfRfs[], Å, «, Ü, ·[]B

### []...·½·ûCEü

Ctrl fL[]

### []‘¼·ûCEü

DOS/V []FAIt fL[]

EPSON/NEC PC []FGRPH fL[]

# [Ž©“®”Í^Í'¹'ð] f{f^f“

, ±, ÿ{f^f“, ðfNfŠfbfN, ·, é, Æ□ACE´□e, ì'S—ì^æ, ðŽ©“®”Í'¹'ð, µ, Û, ·□B

CE´□efjfo□[, ì— 'x, ¢%~ , è, Ä, ç, é, Æ□A%~ , è, ì•”•ª, ¢—ì^æ, ÉŠÛ, Û, è, é□è□‡, ¢, , è, Û, ·, ì, Ä, 2'□^Ó, , ¾, ¢, ç□B

CE´□e, É•j□”, ì%æ'œ, ¢, , é□è□‡, ì□AŽæ, è□ž, Ý, ½, ç%æ'œ, æ, è□, µ'å, «, ß, ì^É'u, ðf}fEfX, Åfhf  
%ofbfO, µ, Ä'¹'ð, µ, Ä, ©, ç□A□mŽ©“®”Í^Í'¹'ð□nf{f^f“, ðfNfŠfbfN, µ, Û, ·□B, » , x, ·, é, ±, Æ, É, æ, è-Ú“ì, ì—  
ì^æ, ð, æ, èŠÉ'P, É'¹'ð, ·, é, ±, Æ, ¢, Ä, «, Û, ·□B



# [Ž“@~I] f{f^f“

fvfCfjrf... [fEfbf“fhfE,É•\Ž|,³,ê,Ä,ç,é%œæ’œ,ìAŽæ,èž,Ý~g“à,ì~I□o□i-  
¾^Ä□j,ðŽ“@’²□@,μ,Û,·□BŽ“@~I□o,ðŽÄ□s,·,é,Æ□A□mfCf□□[fW□\$CEä□n,lfnfCf  
%ofCf□i~I□o,à~A“@□j□^fVfffhfE□^fKf“f},²Ž“@~I,É’²□@,³,ê,Û,·□B,±,ê,É,æ,è□A,Û,Æ,ñ,Ç,ì  
%œæ’œ,Ä“K□Ø,È~I□o,²¾,ç,ê,Û,·□B

\*ŠÖ~A□€-Ú□FŽ“@~I□o’²□@—á

□%Šú□Y’è,Ä,í□A’S-É,“,æ,ÑfY□[fEfbfCfjrf... [CEä,ÉŽ“@~I□o’²□@,²□s,í,ê,Û,·,ì,Ä□AŠî-  
{“I,É□AŽ“@~I□of{f^f“,É,æ,é’²□@,í•s—v,Ä,·□BŽ“@~I□of{f^f“,í□AŽÝ,ìŽž,ÉŽg—p,μ,Ä,,¾,³,ç□B

□E fY□[fEfbfCfjrf... [L,μ,É,ç□ê□#□B,±,ì□ê□#,íCE’□e’ä’S-  
É,Ä,ì~I□o’²□@,É,É,è,Û,·,ì,Ä□AŽæ,èž,Ý~g“à,Ä,ì~I□o,í•K,,μ,à“K□Ø,É,í,É,è,Û,¹,ñ□B,»,ì,½,β□A□mŽ“@~I  
□o□nf{f^f“,ðfNfŠfbfN,·,é,©□A,Û,½,ífY□[fEfbfCfjrf... [L,É,æ,Ä,Ä~I□o’²□@,μ,Ä,,¾,³,ç□B

□E □mfCf□□[fW□\$CEä□nf\_fCfAf□fO,È,Ç,Ä  
%œæŽž,ð’²□@,μ,½CEä□A□mfŠfZfbfg□nf{f^f“,É,æ,é’²□@’O,ì□ó’Ó,É-B,μ,½□ê□#□B,±  
,ìŽž□A~I□o’²□@,àfŠfZfbfg,³,ê,Û,·,ì,Ä□A,Û,,□mŽ“@~I□o□nf{f^f“,ðŽg—p,μ,Ä’²□@,μ’¼,μ,Ä,,¾,³,ç□B

fvfCfjrf... [CEä,ÉŽ“@~I□o’²□@,ð□s,x,©,Ç,x  
,©,í□A□mŠÄ«□Y’è□nf\_fCfAf□fO,Ä□Y’è,Ä,«,Û,·,²□A’É□í,í□Y’è,ð•í,!,È,ç,±,Æ,ð,“,·,·,β,μ,Û,·□B

\*ŠÖ~A□€-Ú□FŽ“@~I□o,ì<éŽè,ÈfP□ifX





# Ž“@~I□o,ì<éŽè,ÈfP□[fX

Œ´□e,É””,â□•,ì•”•â,â,È,ç□ê□‡,í□A□mfCf□□[fW□□\$Œä□nf\_fCfA□f□fO,ìfnfCf%□fCf□g□^fvfffhfE□^fKf“f},È,Ç,Å-  
¾^Ã,ð’²□@,μ,Ã,,¾,¾,ç□B

Ž“@~I□o,Ã,í□AŽæ,è□ž,Ý~g“à,ì□Ã,à-¾,é,ç•”•â,ð”’,É<ß,□A□Ã,à^Ã,ç•”•â,ð□•,É<ß,,μ,Û,·□B,»ì,½,ß□ACE  
´□e,É””,ç•”•â,â,È,ç□ê□‡,í‘S’ì,¾-¾,é,,È,è,·,¬,½,è□A□•,ç•”•â,â,È,ç□ê□‡,í‘S’ì,¾^Ã,,È,è,·,¬,½,è,μ,Ã□A“K□Ø,È  
%œ’œ,È,È,ç,È,ç□ê□‡,â, ,è,Û,·□B



-{—^,ì%œ’œ

”’,ç•”•â,â,È,ç,½,ß□AŽ“@~I□o,Ã-¾,é,,È,è,·,¬,½%œ’œ



# ["Z"x•â³] f{f^f"

,±,lf{f^f",đfNfŠfbfN,·,é,Æ□A□m"Z"x•â³□nf\_fCfAf□fO,ª•\Ž!,³,ê,Ü,·□B,±  
lf\_fCfAf□fO,Ā,Í□Afg□[f"ˆÉ□ü,đ•Ö□W,μ,Ā%œ'œ'S'ì,ì"Z"x,đfof%of"fX—Ç,Žd□ă,°,é,±,Æ,ª,Ā,«,Ü,·□B

Šî-{"I,É□A□o"Ā—p"r,È,Ç,Ā%œŽj,đ□x•",Ü,Ā•â³,·,é•K—v,ª, ,é□ê□‡,É□A—~—p,·,é<@"\,Ā,·□BŽŸ,ì,æ,π,É—  
~—p,μ,Ā,,¾,³,ç□B

□E Ž©"®~I□o'²□®,",æ,ŃfCf□□[fW□§CEă,Ā,ì'²□®,É,æ,Ā,Ā'\_,ç'É,è,ìCE<%œÉ,ª"¾,ç,ê,È,ç□ê□‡  
□i"Z"x•â³,Í□AŽ©"®~I□o,",æ,ŃfCf□□[fW□§CEă,Ā,ì'²□®,đ□s,Ā,½□ă,Ā,ì□A"÷-,É•"ª,ì'Ç%œĀ•â³,Æ,μ,Ā,²  
—~—p,,¾,³,ç□B□Ā%œ,©,ç"Z"x•â³,đ□s,π,±,Æ,Í,,·,·,β,μ,Ü,¹,ñ□j

□E "Ā'è,ì□F,ì"Z"x,đ•â³,μ,½,ç□ê□‡  
□i□Ô□A—Ī□AĀ»,ê,¼,ê,ì"Z"x,đ'P"Æ,Ā•â³,·,é,±,Æ,ª,Ā,«,Ü,·□j

□i □mfCf□□[fWf^fCfv□nf\_fCfAf□fO,lf,fmfNf□fVfVf#f",đ□mTET□n ,à,μ,Í'tŠÔ'²fVfVf#f",đ[È,μ]  
,É□Ÿ'è,μ,Ā,ç,é□ê□‡□A,±,lf{f^f",ÍfOfCE□[•\Ž!,³,ê□A'²□®,Ā,«,Ü,¹,ñ□B

□m"Z"x•â³□nf\_fCfAf□fO,ì□Ú□x,Í□A□m"Z"x•â³□nf\_fCfAf□fO,ì□mfwf<fv□nf{f^f",đ%œŸ,μ,Ā•\  
Ž!,³,ê,éfwf<fv,đ,²—,¾,³,ç□B

# [f]f%o[[]'²[]®] f{f^f“

, ±, ĩf{f^f“, đfNfŠfbfN, ·, é, Æ[]A[]mfjf%o[[]'²[]®[]nf\_fCfAf[]fO, ¢•\Ž! , ³, ê, Ü, ·[]B, ±, ĩf\_fCfAf[]fO, Ā, Í[]A%œæ'œ, ĩ[]F, , ç, ÉŠÖ, ·, éŽŸ, ĩ—v'f, đ'²[]®, Ā, «, Ü, ·[]B

fOfCE[][fof%of“fX[]^[]É“x

ŽŸ, ĩ, æ, x, ÈŽž, É—~—p, μ, Ā, , ¾, ¾, ç[]B

[]E Ž©“®~[]o'²[]®, É, æ, Ā, Ā'\_, ç'É, è, ĩCE<%œÉ, ¢“¾, ç, ê, È, ç[]ê[]‡  
[]ifjf%o[[]'²[]®, ĩ[]AŽ©“®~[]o'²[]®, đ[]s, Ā, ½[]ă, Ā, ĩ'Ç%œĀ'²[]®, Æ, μ, Ā, ²—~—p, , ¾, ¾, ç[]j

[]E %œæ'œ, É[]Æ-¾, È, Ç, ĩ[]F, ¢, ©, Ô, Ā, Ā, ç, é[]ê[]‡  
[]i%œæ'œ'S'ĭ, ĩ[]F, ©, Ô, è, đŽæ, è[]œ, , ±, Æ, ¢, Ā, «, Ü, ·[]j

[]E “Ü, è<ó, ĩ%œ, ĀŽB%œe, μ, ½ŽÉ[]^, đ[]A, æ, è, , ' , â, ©, É'²[]®, μ, ½, ç[]ê[]‡

[]: []F, , ç, đ'²[]®, ·, é<@“\, Ā, ·, ĩ, Ā[]A[]mfCf[][]fWf^fCfv[]nf\_fCfAf[]fO, ĩ\ \  
CE»[]F, ĩ[]Y'è, ¢fOfCE[], Ü, ½, ĩf, fmfNf[], ĩ[]ê[]‡[]A, ±, ĩf{f^f“, ĩfOfCE[][·\Ž! , ³, ê[]A'²[]®, Ā, «, Ü, ¹, ñ[]B

[]mfjf%o[[]'²[]®[]nf\_fCfAf[]fO, ĩ[]Ú[]×, ĩ[]A[]mfjf%o[[]'²[]®[]nf\_fCfAf[]fO, ĩ[]mfwf<fv[]nf{f^f“, đ%œŸ, μ, Ā•\ \  
Ž! , ³, ê, éfwf<fv, đ, ²—~—, ¾, ¾, ç[]B

## [fŠfZfbfg] f{f^f“

Ž©“@~I□o□AfCf□□fW□\$CEä□Afjf%□[’²□@□A”Z“x•â□³,É,æ,é%œŽ¿’²□@,ðŠfZfbfg,μ□ACE’%œ,É-  
ß,μ,Û,·□B

# ["Å" \_ '²@/"Å" \_ ^Ê'u'í'ð] f{f^f"

"\$%&ßCE´□e,ìŽæ,è□ž,Ý,Å—~—p,·,é<@"\,Å,·□B"\$%&ßCE´□eftfjfbfg,É'í%ž,μ,Ä,ç,È,ç<@Ží,Å,Í□A,±,ìf{f^f",í\ Ží,³,ê,Û,¹,ñ□B,Û,½'í%ž,μ,Ä,ç,é<@Ží,Å,à□A<@Ží,É,æ,Å,Ä•\Ží,³,ê,éf{f^f"□i—~—p,Å,«,é<@"\ □j,ª^Ù,È,è,Û,·□BSY"—,·,é□à-¾,ð,“Ç,Ý,,¾,¾,ç□B

## f□f,□F

"\$%&ßCE´□eftfjfbfg,É•t' @,ìftfBf<f€fzf<f\_ÉfZfbfg,μ,½ftfBf<f€ ,ðŽæ,è□ž,þ□ê□#□A□Å" \_ '²@□^□Å" \_ ^Ê'u'í'ð,í•s—v,Å,·□B□@□mCE´□eŽí□n,Å□m"\$%&ßCE´□eftfjfbfg□ XX□n,ð'í'ð,·,é,Æ□AftfBf<f€fzf<f\_ÉfZfbfg,μ,½ftfBf<f€,É□#í,¹,½□Å" \_ ^Ê'u□i2.5mm□j,É□Ý'è,³,ê,Û,·□B

,È,“□A□mCE´□eŽí□n,Å□mCE´□e'ä□n,ð'í'ð,·,é,Æ□A□Å" \_ ^Ê'u,ÍŽ©“ @“l,É0mm,É-ß,è,Û,·□BfKf%ofX- Ê,É'¼□Ú'u,ç,½"½ŽËCE´□e,ðŽæ,è□ž,þ□ê□#É□A□Å" \_ '²@,ð,μ'¼,·K—v,í, ,è,Û,¹,ñ□B

**[□Ú□x]**

[[Å" \_'²@/Å" ^Ê'u'í'ð] f{f^f",ì□Ú□x



0.0 [[Å" \_'²@

[[Å" ^Ê'u (CE'íe,Éfsf"fg,ª□‡,xfzf"ft,ì^Ê'u) ,ð'²@,Å,«,Ü,·□B

'²@•û-@□F

1. ,Ü, ,□@[AUTO] f{f^f",É,æ,éŽ©" ®'²@,ðŽŽ,µ,Ü,·□BfvfCEfrf...  
□[fEfBf"fhfE,Å□Å" \_'²@,µ,½,çŽæ,è□ž,Ý~g,ª'í'ð,³,ê,Ä,ç,é,±,Æ,ðŠm"F,µ□A[AUTO]  
f{f^f",ðfNfŠfbfN,µ,Ü,·□B,±,ê,Å□Å" \_'²@,í,í□A'²@,í□—¹,Å,·□B  
,»,ê,Å,à□Å" \_'²@,í,É,ç□è□‡,í□AŽè□‡2,É□i,ñ,Å,¾,¾,ç□B
2. fvfCEfrf...□[fEfBf"fhfE,Å□Å" \_'²@,µ,½,çŽæ,è□ž,Ý~g,ª'í'ð,³,ê,Ä,ç,é,±,Æ,ðŠm"F,µ□A[f}fjf...fAf<'²@]  
f{f^f"□ifj□f%o,ÉŽè,ð"Y,í,Ä,ç,éŠG,ìf{f^f"□j,ðfNfŠfbfN,µ,Ü,·□B□m□Å" \_'²@□nf\_fCfAf□fO,ª•\  
Ž,³,ê,Ü,·□B
3. fXf%ofCfhfo□[,ð□%oE,É"® ,©,µ,Ä -2mm ,©,ç 6mm ,ìŠÔ,Å'²@,µ,Ü,·□B
4. □mŠm"F□nf{f^f",ðfNfŠfbfN,·,é,Æ□A'²@'O,Æ'²@CEä,ì%oæ'œ,ðŠm"F,Å,«,Ü,·□B,±,ìŽž□ÄfvfCEfrf...  
□[,ª□s,í,ê,Ü,·□B
5. □mOK]f{f^f",Å'²@,ªŽÀ□s,³,ê□A□mfLfff"fzf<□nf{f^f",Å'tŽ~ ,³,ê,Ü,·□B



0.0 □m□Å" ^Ê'u'í'ð□nf{f^f"

[[Å" ^Ê'u (CE'íe,Éfsf"fg,ª□‡,xfzf"ft,ì^Ê'u) ,ð'í'ð,Å,«,Ü,·□B

,±,ìf{f^f",ð%oÝ,·,½,Ñ,É□A□Å" ^Ê'u,ª0mm□ifKf%ofX-  
Ê,É□Å" \_'²@,xf^Ê'u□j,Æ2.5mm□iftfBf<f€fzf<f\_,Éfzfbfj,µ,½ftfBf<f€  
,É□Å" \_'²@,xf^Ê'u□j,Å□Ø,è'Ö,í,è,Ü,·□B

f{f^f",ì%oE%oª,É□ACE»□Ý'í'ð,³,ê,Ä,ç,é□Å" ^Ê'u,ª•Ž,³,ê,Ü,·□B

## [fCf][fWf^fCfv] f\_fCfAf\_fOf{fbfNfX

,±,lf\_fCfAf\_fOf,íAEPSON TWAIN%œ-Ê,É•\
Ži,³,è,éfCf[fWf^fCfvfŠfXfg,ìY'è,ð•ïX,μ,½,èA•Ú'¶^í[œe,·,é,½,ß,ì,à,ì,À,·BmOKnf{f^f",ÁY'è,ª—
LCø,É,È,èA[mfLfff"fZf<nf{f^f",Á-³CEø,É,È,è,Ü,·B

\*ŠÖ~A□€-Ú□F'è<`□İ,Ý,lfCf[fWf^fCfv

## •\CE»□F

Žæ,è□ž,þ%œ'œ,ì□F□",ðŽÝ,ì't,©,ç'l'ð,μ,Ü,·B\*^ó,ì□F□",í□A<@Ží,É,æ,Á,Ä^Ù,È,è,Ü,·B,Ü,½□A•\
Ži,³,è,È,ç□í'í%ž,μ,Ä,ç,È,ç□<@Ží,à, ,è,Ü,·B

42/36bitffj%□[ \* □i-ñ4'>4□ç%□F□^ -ñ687%□F,ìffj%□□[□j

24bit fff%□[ □i-ñ1α677-œ□F,ìffj%□□[□j

14/12bitfOfCE□[ \* □i16,384ŠK'^2□^4,096ŠK'^2,ìfOfCE□[fXfP□[f<□j

8bit fOfCE□[ □i256ŠK'^2,ìfOfCE□[fXfP□[f<□j

f,fmfNf□ □i''□•2'l□j

## •ižž

Žæ,è□ž,Ý,ì•ižž,ðY'è,μ,Ü,·Bm□,•i^Ê□n,ð'l'ð,·,é,Æ%œæžž—D□æ□A□mfhf%oftfg□n,ð'l'ð,·,é,Æ'—“x—
D□æ,É,È,è,Ü,·B

## f,fAfCE□œ<Ž

^ó□ü•"□ižGŽ□□Afj^f□fO,È,Ç□j,ìžæ,è□ž,Ý,Á"□¶,·,é□Af,fAfCEfpf^□[f",ì"□¶,ð-hž~,Á,«,Ü,·Bf,fAfCE,Æ,í□A-
Ô-Ú□ó,È,Ç,É"□¶,·,é%œA%œ,Á□A"š□F,È,Ç,ì'tšÔ'^2•"•ª,Á"Á,É-Ú—š,ž,Ü,·B

□E f,fAfCE,ð-h,®,É,í□A,±,ì<@"\,ð~—p,·,é'O,É□A,Ü,·m□o—

í<@ší□n,ìfAf"fvff□[fvf}fXfN,ìf`fFbfN,ðŠO,μ,Ä,-

,¾,¾,ç□BfAf"fvff□[fvf}fXfN,ìf`fFbfN,ðŠO,·,¾,¾,Ä,à□Af,fAfCE,ª-Ú—š,½,È,,È,è,Ü,·B

□E f,fAfCE□œ<ž,ìf\ftfgfEfffA,Á□^—□,μ,Ü,·,ì,Á□AOn ,É,·,é,Æžæ,è□ž,Ý,É□,μžžšÔ,ª,©,©,è,Ü,·B

□E %œæ'œ,Éf,fAfCEfpf^□[f",ª"□¶,μ,Ä,ç,é,©,Ç,α,©,í□A%œæ'œ,ðfffBfXfvfCEfC□ä,Á100%□i:1 □j,Á•\

Ži,μ,Ášm" F,μ,Ä,¾,¾,ç□i□k□—•\žž,·,é,Æ%œæ'œ,ª□r,,È,Á,Áf,fAfCE,ª"□¶,μ,Ä,ç,é,æ,α,ÉCE©,ì,é,½,ß□j□B

\*ŠÖ~A□€-Ú□F,fAfCE□œ<ž,ìfTf"fvf<

## ffj%□[fXf€□[fWf"fo

ffj%□[CE'□e,ð□A"Á'è,ì□F,ÉCE\_□F,μ,Ä□iŠ,,è"—,Ä,Ä□jžæ,è□ž,Ý,Ü,·B<ßž—□F,í1,Á,ì□F,ÉŠ,,è"—
,Á,ç,è,Ü,·,ì,Á□AZŽ,ìf□fŠfbfg,ª, ,è,Ü,·B

□E □F□",ì□,È,ç□f□S□E□fOf%oft□E□fC□f%ofXfg,È,Ç,ìžæ,è□ž,Ý,Á□A□F,ìf€f%œ,ª"□¶,μ,Ü,¹,ñ□B

□E Žæ,è□ž,ñ,¾%œæ'œ,É□AftfHfgfCEf^fbf`f\ftfg,Á□F•t,·,â□F,ì'u,«š·,ì,È,Ç,ì□^—□,ð,·,é□ê□#□A,Ü,·□^—
□,·,é□F^æ,ð'l'ð,μ,Ü,·B,»,ì□Ü□A<ßž—□F'l'ðfc□[f<,Á-Ú"l,ì□F,ðšÉ'P,É'l'ð,·,é,±,Æ,ª,Á,«,Ü,·B



CE, OFCEä, ÉŽg—p, 3, é, éFfjff%[]fjpfCEfbfg[]j, íACE´e, ĀŽg—p, 3, é, Ā, ç, éF, Éf, í, 1, ĀŽg—  
p•p“x, ì, çF, ©, çf, ÉŠ,,, è“—, Ā, ç, è, Ü, ·B, »., ì, ½, ßACE, OFCEä, ÉŽg—p, 3, é, éFf, ÍCE  
´e, É, æ, Ā, Ā^Ü, È, è, Ü, ·, ³A30F’ö“x, Ā, ·B, ½, ¾, μA□o—í%æ’œ, Æ, μ, Ā, í24bitfjff%[]j, Æ, È, è, Ü, ·B

ŽŸ, ìèfA, ±, ì@“\, ĪŽg—p, μ, È, ç, Ā, , ¾, ¾, çB

FE fff%[]ŽÉ^, ðfj<ff%[]j, ĀŽæ, èž, Ý, ½, çèf

FE fOf%ff[]fVfj“ , à<ßŽ—F, ð³Šm, ÉŽæ, èž, Ý, ½, çèf

### Ž©“@~I[]oflfvfVfj“

Žæ, èž, pCE´e, lf^fCfv, É, æ, Ā, ĀAZÉ^, Ü, ½, í—  
p, ²I’ð, ³, è, Ü, ·BŽÉ^, ²I’ð, ³, è, ½èfAŽÉ^, ĪŽæ, èž, Ý, É“K, μ, ½~I□o, ì²@, ²Ž©“@“I, Éps, í, è, Ü, ·B—  
p, ²I’ð, ³, è, ½èfA•¶Žš, à%æ’œ, È, Ç—  
p, ĪŽæ, èž, Ý, É“K, μ, ½~I□o, ì²@, ²Ž©“@“I, Éps, í, è, Ü, ·BŽ©“@~I[]oflfvfVfj“, ìCE<%É, íAfvfCEfjf...[]j, É”½  
%of, ³, è, Ü, ·B

### fhf[]fbfvfAfEfg

Éí, íY’è, ð·X, ·, é·K—v, í, , è, Ü, ¹, ñB

·CE»F, ²f, fmfNf[]AfOfCE[]j, ìèf, ÉAZæ, èž, Ü, È, çF, ðY’è, Ā, «, Ü, ·B, È, μEÔE—ìEĀ, ©, ç’I’ð, μ, Ü, ·B  
%æ’œ, É, æ, Ā, Ā, íA—î, Ü, ½, íĀ, ², «, è, ç, ÉĀ, í, È, çèf, ², , è, Ü, ·B, »., ìèf, íAmfCf[]fW[]\$CEänf\_fCfAf[]  
O, ìm, μ, «, ç’In, ð²@, μ, Ā, , ¾, ¾, çB

### f, fmfNf[]fVfVfj“

·CE»F, ðf, fmfNf, ÉY’è, μ, ½èf, ÉATET[]i“wCEi[]œ<Ž<@“[]j, ÆAAS []iŽ©“@—ìæ·²—f<@“[]j, ðŽg—  
p, ·, é, ©, Ç, x, ©, ðY’è, μ, Ü, ·B

### TET []ifefLfxfgfGf“fnf“fxfj“fgfefNfmf[]fW - ”wCEi[]œ<Ž[]j

·CE»F, ²f, fmfNf, ĪŽš, ÉA%æ’œ, ì”Z’W, ð”»f, ·, é, μ, «, ç””□, ì<[]j’I, ðŽ©“@²@, ·, é<@“\, Ā, ·B, ±, ì@“\  
, ðŽg—p, ·, é, ÆA•¶Žš, ì”wCEi, ÉF, ²t, ç, Ā, ç, éèf, Ā, àA•¶Žš, ì, Ý, ð’Š□o, μ, ĀŽæ, èž, p, ±, Æ, ²%Ā“\, Ā, ·B  
FE ”wCEiF, ðœ<Ž, μ, «, è, È, çèf, íAm□o—ì<Š[]nf\_fCfAf[]fO, ìfAf“fvff[]fVf}fXfN, ì`ffbfN, ðŠO, ·, ÆCEø  
%É, ²o, éèf, ², , è, Ü, ·B  
FE TET , ð—LCEø, É, ·, é, ÆAfCf[]fW[]\$CEäEfff%[]²@FE”Z“x·â³EŽ©“@~I□o²@, í-³CEø, É, È, è, Ü, ·B

### AAS []ifi[]fGfGfŠfAfZfOf[]f“fe[]fVfj“[]j

·CE»F, ²f, fmfNf, ĪŽš, ÉA•¶Žš, Æ%æ’œ, ²□Y, μ, Ā, ç, éCE´e, Ā, àA•¶Žš·”·², ìf, fmfNf, ĀA  
%æ’œ·”·², í<^Ž—’tŠÔ²^—□, ð, μ, ĀŽæ, èž, p, ±, Æ, ², Ā, «, Ü, ·BFAFAX , âfRfs[]j—p, ì%æ’œ, É“K, μ, Ā, ç, Ü, ·B

### ’tŠÔ²

Éí, íY’è, ð·X, ·, é·K—v, í, , è, Ü, ¹, ñB

·CE»F, ²f, fmfNf[]iOCR []œ, []j, ìèf, ÉA’tŠÔ², ð<[Ž—“I, É·CE», Ā, «, Ü, ·B

### []m·Ü’¶nf{f^f“

Ÿ'è,ð•Ù'¶,μ,Û,·B

\*ŠÖ~A€-ÚFfCf[]fWf^fCfv,ì“o~^,Æ•ïX

**míœnf{f^f“**

Ÿ'è,ðíœ,μ,Û,·B

\*ŠÖ~A€-ÚFfCf[]fWf^fCfv,ìíœ

ifj%o[fXf€[fWf“fOj

CE, FCEä, ÉŽg—p,<sup>3</sup>,ê,éFifj%o[fpfCEfbfgj,íACE´e,ÅŽg—p,<sup>3</sup>,ê,Ä,ç,éF,É‡,í,<sup>1</sup>,ÄŽg—  
p•p“x,ì,,çF,©,ç‡,ÉŠ,,,è“-,Ä,ç,ê,Ü,·B

CE, FCEä, ÉŽg—p,<sup>3</sup>,ê,éF“Í a limited number of index colors,Ä,·B,<sup>1/2</sup>,<sup>3/4</sup>,μA□o—Í%œ‘œ,Æ,μ,Ä,Í24bitjff  
%o[,Æ,È,è,Ü,·B

'è` òí,ý,ìfCfòòlfWf^fCfv

fCfòòlfWf^fCfv,ìAŽŸ,ìŸ'è,á, ,ç,©,¶,ß'è<`³,è,Ä,ç,Ü,·B\*^ó,ì-¼,ì, ,æ,ŃF",ìA<@Ží,É,æ,Á,Ä^Ü,È,è,Ü,·B

²Ò°¼P À²Ìß-¼	•\CE»F	•iŽz	Ó±Ú œ<Ž	¶×° ½Ń°¼PÝ, P	Ž©“®~ìò μìß¼@Ý	ÄPÛ`ìß ±³Ä	ÓÉ,Û μìß¼@Ý	'†ŠÔ'²
¶×°ŽÈ^ ì42bitìj*	42bit¶×°	ì,•i^È	Off	ì	ŽÈ^	ì	ì	ì
¶×°ŽÈ^	24bit¶×°	ì,•i^È	Off	Off	ŽÈ^	ì	ì	ì
¶×°ì—P	24bit¶×°	ì,•i^È	On	Off	ì—P	ì	ì	ì
""•ŽÈ^ ì14bitìj*	14bit, PÛ°	ì,•i^È	Off	ì	ŽÈ^	,È,μ	ì	ì
""•ŽÈ^	8bit, PÛ°	ì,•i^È	Off	ì	ŽÈ^	,È,μ	ì	ì
""•ì—P	8bit, PÛ°	ì,•i^È	On	Off	ì—P	ì	ì	ì
fCf%ofXfg	24bit¶×°	ì,•i^È	Off	On	ì—P	ì	ì	ì
•¶Žš/ü %æ	f,fmfNf	fhf%oftfg	ì	ì	ì	,È,μ	,È,μ	,È,μ
•¶Žš (“wCEìœ<Ž )	f,fmfNf	ì,•i^È	ì	ì	ì	ì	TET	ì
COPY & FAX	f,fmfNf	fhf%oftfg	ì	ì	ì—P	ì	AAS	'†ŠÔ'²A

f,fAfCEœ<Ž,ìfTf“fvf<



f'fFbfNOff      f'fFbfNOn

**fCf□□[fWf^fCfv,ì“o~^,Æ•ï□X**

fCf□□[fWf^fCfv,ð□V<K,É“o~^□A,Ü,½,í•ï□X,·,éŽè□‡,íŽŸ,ì'Ê,è,Å,·□B

1. [fCf□□[fWf^fCfv] fefLfXfgf{fbfNfX,É□V<K-¼□ì,ð“ü—í,μ,Ü,·□B'è<`□í,Ÿ,ì□Ÿ'è,ð•ï□X,·,é□é□‡,í□A,»,)–¼□ì,ðfŠfXfg,©,ç'ì'ð,μ,Ü,·□B

“ü—í,Å,«,é•¶Žš□”,í□A”¼Šp,Å32•¶Žš□A'SŠp,Å16•¶Žš^È“à,Å,·□B

2. Še□€–Ú,ð□Ÿ'è,μ,Ü,·□B

3. [•Ú'¶] f{f^f“,ðfNfŠfbfN,μ,Ü,·□B

[OK] f{f^f“,Å,í□A□Ÿ'è,μ,½“à—e,í“o~^,³,ê,Ü,¹,ñ□B

4. [OK] f{f^f“,ðfNfŠfbfN,μ,Ü,·□B“o~^,³ŽÀ□s,³,ê□Af\_fCfAf□fOf{fbfNfX,³•Å,¶,Ü,·□B

,±,±,Å [fLfff“fZf<] f{f^f“,ðfNfŠfbfN,·,é,Æ□A“o~^,³,ê,Ü,¹,ñ□B

## fCf□□[fWf^fCfv,ì□í□œ

fCf□□[fWf^fCfv,ð□í□œ,·,éŽè□‡,íŽŸ,ì'Ê,è,Å,·□B

1. □í□œ,·,éfCf□□[fWf^fCfv-¼,ðfŠfXfg,©,ç'l'ð,μ□A[□í□œ] f{f^f",ðfNfŠfbfN,μ,Û,·□B
2. □í□œ,ìŠm"F%œ-Ê,ª•\Ž!,³,ê,é,ì,Å□A,æ,¯,ê,î□m,í,ç□nf{f^f",ðfNfŠfbfN,μ,Û,·□B
3. [OK] f{f^f",ðfNfŠfbfN,μ,Û,·□B□í□œ,ªŽÀ□s,³,ê□Af\_fCfAf□fOf{fbfNfX,ª•Â,¶,Û,·□B  
,±,±,Å [fLfff"fZf<] f{f^f",ðfNfŠfbfN,·,é,Æ□A□í□œ,³,ê,Û,¹,ñ□B



”□•,ì□ü%œ,ðfjſšf“f^,Å^ó□ü,.,é□ê□‡,ì%ð’œ“x

”□•,ì□ü%œ,ðžæ,è□ž,ñ,Å□AEPSON PM fVfš□[fY□^MJ fVfš□[fY,Å^ó□ü,.,é□ê□‡□A%ð’œ“x,Í□o—Í<@Ší,ì□  
%Šú□Ý’è,ì,Ü,Û,Å,“Žg,ç,,¾,¾,ç□B□ü,lfMfUfMfU,ª-Ú—š,½,È,ç%ð’œ“x,É□Ý’è,¾,è,Ä,ç,Ü,·□B

%½,ç,©,ì—□—R,Å%ð’œ“x,ð•ï□X,.,é□ê□‡,Í□A^ó□ü%ð’œ“x,ì□@□□”•ª,ì1 “{,É□Ý’è,μ,Ä,,¾,¾,ç□i360dpi  
□A240dpi ,È,Ç□j□B□ü,lfMfUfMfU,ª-Ú—š,½,È,,È,è,Ü,·□B

□m•Ů’¶□nf{f^f“

□Ý’è,ð•Ů’¶,μ,Ü,·□B

\*ŠÖ~A□€-Ú□F□o—Í<@Ší,ì“o~^,Æ•ï□X

□m□í□œ□nf{f^f“

□Ý’è,ð□í□œ,μ,Ü,·□B

\*ŠÖ~A□€-Ú□F□o—Í<@Ší,ì□í□œ



fA"fvff[fvf}fXfN,ifTf"fvf<



f`fFfbfNOff      f`fFfbfNOon

o—í<@Ší,ì“o~^,Æ•İX

o—í<@Ší,đV<K,É“o~^A,Ü,½,í•İX,·,éŽè#,ÍŽÝ,ì’È,è,Å,·B

1. [o—í<@Ší] feLfXfgf{fbfNfX,ÉV<K-¼ì,đ“ü—í,μ,Ü,·B’è< Ĩ,Ý,ìŸ’è,đ•İX,·,éèè#,ÍA,»,ì-¼ì,đfŠfXfg,©,ç’l’đ,μ,Ü,·B

“ü—í,Å,«,é•Ÿš”,ÍA”¼Šp,Å32•ŸšA’SŠp,Å16•Ÿš^È“à,Å,·B

2. Še€-Ú,đŸ’è,μ,Ü,·B

3. [•Ÿ’Ÿ] f{f^f“,đfNfŠfbfN,μ,Ü,·B

[OK] f{f^f“,Å,ÍAŸ’è,μ,½“à—e,Í“o~^,³,ê,Ü,¹,ñB

4. [OK] f{f^f“,đfNfŠfbfN,μ,Ü,·B“o~^,žÅs,³,êAf\_fCfAfOf{fbfNfX,³•Å,Ÿ,Ü,·B

,±,±,Å [fLfff“fZf<] f{f^f“,đfNfŠfbfN,·,é,ÆA“o~^,³,ê,Ü,¹,ñB

o—í@Ší,ìíœ

o—í@Ší,ðíœ,·,éŽè±,íŽŸ,ì'Ê,è,Å,·B

1. íœ,·,éo—í@Ší-¼,ðfŠfXfg,©,ç'l'ð,μA[íœ] f{f^f“,ðfNfŠfbfN,μ,Ü,·B
2. íœ,ìŠm“F%œ-Ê,ª•\Ž!,³,ê,é,ì,ÅA,æ,¯,ê,îm,í,çnf{f^f“,ðfNfŠfbfN,μ,Ü,·B
3. [OK] f{f^f“,ðfNfŠfbfN,μ,Ü,·Bíœ,ªŽÀs,³,êAf\_fCfAfOf{fbfNfX,ª•Å,¶,Ü,·B  
,±,±,Å [fLfff“fZf<] f{f^f“,ðfNfŠfbfN,·,é,ÆAíœ,³,ê,Ü,¹,ñB

## □Y'è•Ù'¶] f\_fCfAf□fOf{fbfNfX

EPSON TWAIN, ìŠeŽí□Y'è, ð•Ù'¶, μ□A□Ä—~—p, , é, ±, Æ, ð, Å, «, Ü, ·□B

### f□f, □F

, ; Žg, ç, ì<@Ží, É, æ, Á, Ä, í□A“Š%œßCE´□eftfjfbfg, É•t'®, ìftfBf<fçfzf<f\_É□‡, í, ½Žæ, è□ž, Y~g, ì□Y'è, ð□AŠeftfBf<fçf<f\_ì-¼□ì, Å“o~^, ð, é, Å, ç, Ü, ·□B

Žæ, è□ž, pftfBf<fçf<f\_ì-¼□ì, ðfNfŠfbfN, μ, Å'í'ð, μ□A□mOK□nf{f^f“, ðfNfŠfbfN, , é, Æ□Afvfçfçf... □[fçfBf“fhfE, ÉŠeftfBf<fçf<f\_ì, É□‡, í, ½Žæ, è□ž, Y~g, ð•\Ží, ð, é, Ü, ·□B

## □Y'è•Ù'¶, ìŽd•ù

1. CE´□e, ðfvfçfçf... □[, μ□AŽæ, è□ž, Y~g, ì□Y'è□Efc□□□[fwf^fcfv, à□o—í<@Ší, ì□Y'è□E%œŽí'²□®, È, Ç, ð□s, ç, Ü, ·□B
2. □m□Y'è•Ù'¶□nf{f^f“, ðfNfŠfbfN, μ, Ü, ·□B
3. □mf□□[fU, ì□Y'è•Ù'¶-¼□nfefLfxfgf{fbfNfX, É□A□V<K-¼□ì, ð“ü—í, μ, Ü, ·□B“ü—í, Å, «, é•¶Žš□“, í□A“¼Šp, Å32•¶Žš□A“Ššp, Å16•¶Žš^È“à, Å, ·□B
4. [•Ù'¶] f{f^f“, ðfNfŠfbfN, μ, Ü, ·□B
5. [OK] f{f^f“, ðfNfŠfbfN, μ, Ü, ·□B□Y'è, ð•Ù'¶, ð, é□A\_fCfAf□fOf{fbfNfX, ð•Å, ¶, Ü, ·□B  
, ±, ±, Å [fLfff“fzf<] f{f^f“, ðfNfŠfbfN, , é, Æ□A•Ù'¶, ð, é, Ü, ¹, ñ□B

## Žæ, è□ž, Y, ìŽè□‡

1. Žæ, è□ž, Y, É—~—p, μ, ½, ç, ð•Ù'¶-¼, ðfNfŠfbfN, μ, Å'í'ð, μ, Ü, ·□B•í□“, ì□Y'è, Å, Ü, Æ, ð, ÅŽæ, è□ž, p□é□‡, í□A•Ù'¶-¼, ðShift fL□[, ð%Ÿ, μ, É, ð, çfNfŠfbfN, μ, Å'í'ð, μ, Ü, ·□B  
□[Ctrl fL□[, ð%Ÿ, μ, É, ð, çfNfŠfbfN, , é, Æ□A“C^Ó, ì•Ù'¶-¼, ð1 , Å, , Å'í'ð, Å, «, Ü, ·□B  
•í□“, ìŽæ, è□ž, Y, É, í□ATWAIN ‘í%œžfçfçf, ìí%œž, ð•K—v, Å, ·□BTWAIN ‘í%œžfçfçf, ìŽæ^μ□à-¼□“, Å, ²Šm“F, -¼, ð, ç□B
2. □mOK□nf{f^f“, ðfNfŠfbfN, μ, Ü, ·□BEPSON TWAIN, ìŠeŽí□Y'è, ð•Ù'¶, μ, ½“à—e, É•í, í, è, Ü, ·□B
3. □mEPSON TWAIN □n%œ—É, Å□A•Ù'¶-¼, ð1  
Å, ì□é□‡, í□mŽæ, è□ž, Y□nf{f^f“□A•í□“, ì□é□‡, í□m‘S, ÅŽæ, è□ž, Y□nf{f^f“, ðfNfŠfbfN, μ, ÅŽæ, è□ž, Y, Ü, ·□B

## □í□œ, ìŽd•ù

1. □í□œ, , é-¼□ì, ðfŠfxfg, ©, ç'í'ð, μ□A□m□í□œ□nf{f^f“, ðfNfŠfbfN, μ, Ü, ·□B
2. □í□œ, ìŠm“F%œ—É, ð•\Ží, ð, é, é, ì, Å□A, æ, ˘, è, í□m, í, ç□nf{f^f“, ðfNfŠfbfN, μ, Ü, ·□B
3. [OK] f{f^f“, ðfNfŠfbfN, μ, Ü, ·□B□í□œ, ðŽÀ□s, ð, é□A\_fCfAf□fOf{fbfNfX, ð•Å, ¶, Ü, ·□B  
, ±, ±, Å [fLfff“fzf<] f{f^f“, ðfNfŠfbfN, , é, Æ□A□í□œ, ð, é, Ü, ¹, ñ□B

## **fvfCEfrf... [fEfBf“fhfEFTfCfY**

fvfCEfrf... [fEfBf“fhfE, ðfTfCfY, ðA'âE'tE→, ©, ç'í'ð, Å, «, Ü, ·BfffBfXfvfCEfC, í'å, «, <sup>3</sup>i•\Ž!  
%øð'œ“xj, É, æ, Á, Ä, ÍAÝ'è, ð•Í, Ì, Ä, àfTfCfY, <sup>a</sup>•í%ø», µ, È, çéç<sup>a</sup>, , è, Ü, ·B

fvfCEfrf... [Eã, ÉfEfBf“fhfEFTfCfY, ð•ÏX, ·, é, ÆfvfCEfrf... [‰æ'œ, <sup>a</sup>Á, Ì, Ü, ·, Ì, ÅAÄ“xfvfCEfrf... [µ, Ä, -  
, <sup>3</sup>/4, <sup>3</sup>, çB

## [ŠÄ««Ÿ'è] f\_fCfAfOf{fbfNfX

EPSON TWIN,ì"®ŸŠÄ««««Ÿ'è,μ,Û,·BmOKnf{f^f",ÄŸ'è,ª—LCEø,É,È,èA□mfLfff"fZf<□nf{f^f",Ä-  
³CEø,É,È,è,Û,·B

## fvfCEfrf...[fCf□□fW□AŠeŸ'è,δ•Ů'¶

□%ŠúŸ'è,Ä,Í,±,ìf`fFfbfNf{fbfNfX,ªf`fFfbfN,³,è,Ä,¨,è□AEPSON TWIN ,δ•Ä,¶,½ŽŽ,É□AfvfCEfrf...  
□[fCf□□fW,âŠeŽŸ'è,δ•Ů'¶,μ,Û,·BfRf"fsf...□[f^,ì"dCE¹,ðfift,É,μ,Ä,àŸ'è,Í•ŮŽ□,³,è□AZŸ,ÉEPSON TWIN  
,δ<N"® ,μ,½ŽŽ,É"Ç,Ÿ□ž,Û,è,Û,·B

,½,¾,μŽŸ,ìŸ'è,í□A,±,ìf`fFfbfNf{fbfNfX,ìfif"/fift,ÉŠÖ,í,ç,,•ŮŽ□,³,è,Û,·B

□E 'SŽ©"®f,□[fh/f}fjf...fAf<f,□[fh,ì'í'ð

□E [f}fjf...fAf<f,□[fh] f\_fCfAfOf{fbfNfX,ìfEfBf"fhfE^É'u

□E [ŠÄ««Ÿ'è] f\_fCfAfOf{fbfNfX,ìŠe□€-Ů,ìŸ'è

□E ft□[fU□,ª'è<` ,μ,½[fCf□□fWf^fCfv]□A[□o—í<@Ší]□A["Z"x•â□³] ,ìŸ'è

## □, ' -fvfCEfrf...□[

□%ŠúŸ'è,Ä,Í,±,ìf`fFfbfNf{fbfNfX,ªf`fFfbfN,³,è,Ä,¨,è□A'—"x—D□æ,ÄfvfCEfrf...  
□[ ,μ,Û,·Bf`fFfbfN,ðŠÖ,·,Æ□A%œŽž—D□æ,ÄfvfCEfrf...□[ ,μ,Û,·B

%œŽž—D□æ,ÄfvfCEfrf...□[ ,·,é,Æ□AZŸ,ìf□fŠfbfg,ª, ,è,Û,·B

□E fvfCEfrf...□[ %œ'œ,ª□,•i^É,É,È,é,½,β□A%œŽž'²□®,ì□, "x,ðä,°,é,±,Æ,ª,Ä,« ,Û,·B

□E fnfCf%ofCfG/fVfffhfE/fOfCE□[fof%of"fx,ìfXf]fCfGf{f^f",ðŽg—  
p,·,éŽž,É□Afcfxf<í,Û,½,í□F,ð³Šm,É"¾,é,±,Æ,ª,Ä,« ,Û,·B

## Ž©"®fvfCEfrf...□[

,±,ìf`fFfbfNf{fbfNfX,ðf`fFfbfN,·,é,Æ□A EPSON TWIN ,δ<N"® ,μ,½ŽŽ,ÉŽ©"®"l,ÉfvfCEfrf...□[ ,³,è,Û,·B□  
%ŠúŸ'è,Ä,Í,±,ìf`fFfbfNf{fbfNfX,ªf`fFfbfN,³,è,Ä,ç,Û,·B

## fvfCEfrf...[Žž□AŽ©"®~l□o,ðŽÀ□s

□%ŠúŸ'è,Ä,Í,±,ìf`fFfbfNf{fbfNfX,ªf`fFfbfN,³,è,Ä,¨,è□A'S-É,¨,æ,Ñfy□[f€fvfCEfrf...□[CEã□A%œ'œ,ì~l□o□i-  
¾^Ä□j,ðŽ©"®'²□®,μ,Û,·BÉ□í,ìf`fFfbfN,μ,½,Û,Û,Ä,¨Žg,ç,,¾,³,ç□B

## ICM □iWindowsNT,ð□œ,□j

,±,ìf`fFfbfNf{fbfNfX,ðf`fFfbfN,·,é,Æ□AfvfCEfrf...□[ %œ'œ,â□Á□l%œ'œ,ì•â□³,É□AICM ,ªŽg—p,³,è,Û,·B

Windows95 ,ÆWindows98/2000 ,Ä□A•\Ží,³,é,é□€-Ů,ª^Ů,È,è,Û,·B

### Windows95

ICM□F ,¨Žg,ç,ìfvfŠf"f^□ifhf%ofCfo□j,ªICM ,É'í%œž,μ,Ä,ç,Ä□AICM ,ðŽg—  
p,μ,Ä^ó□ü,·,é□ê□†,ÉCEÄ,è□A'í'ð,μ,Ä,,¾,³,ç□BCE'□e,Æ^ó□ü•¨,í□F,ð<β,Ä,¨,é,±



## **fXfjfcfgfAfcRf“ ,lfTf“fvf<”íí**

fncf%oofCfjg/fvfffhfE/fOfCE[fof%of“fX,lfXfjfcfgfAfcRf“ ,đŽg—

p,μ,ĂŠefCEfxf<,l'ı,Ü,½,ÍF,đ“¾,éŽž,İAftf“fvf<”ííi'q'è”ííj,đ'l'đ,μ,Ü,·B'Êí,ÍY'è,đ•İX,·,é•K—v,ı, ,è,Ü,  
¹,ñB

'ı'đŽ^ ,íŽŸ,ı'Ê,è,Ă,·B3 □~3 ,Ü,½,Í5 □~5 fsfNfZf<,đ'l'đ,μ,½êë,ı'q'è'l,ÍAŠefsfNfZf<,İ•½<ı,Ă,·B

□E1 □~ 1 fsfNfZf<□i□%ŠúY'è□j

□E3 □~ 3 fsfNfZf<

□E5 □~ 5 fsfNfZf<



**ICM/sRGB, i-~ -p•u-@**

fXfLfffiAfffBfXfvfCfCfAfvfŠf“f^, íAqF, í•\CE»•ú-@, a^Ù, È, èA, Ü, ½f□□[f]□[.âf, fff<, É, æ, é^á, ç, a, , é, ½, ß□ACE  
´e□EfffBfXfvfCfC•\Ž{□E^óü•”, □F, í^é^v, μ, Ü, ¹, ñ□B

ICM/sRGB, Æ, íA<@ŠíŠÔ, □F□‡, í, ¹, ðŽ©“ @“l, É□s, ç□AŠe□H^ö, □F, ð<ß, Ā, ¯, , é, ½, ß, ìjff%□[f] }fbf` f“fO•ú-@, Ā, •□B

ICM/sRGB , ðŽg—p, μ, ĀŽæ, è□ž, ñ, ¾%œ^œ, ð^óü, , é□ê□‡□AfvfŠf“f^fhf%□fCfo, a ICM/sRGB , É^í%ž, μ, Ā, ç  
, È, ¯, é, í□AICM/sRGB, ìCø%É, í“¾, ç, é, Ü, ¹, ñ□B, » , ì, ½, ß□AfvfŠf“f^fhf%□fCfo, a í%ž, μ, Ā, ç, È, ç□ê□‡, íŽg—  
p, μ, È, ç, Ā, , ¾, ³, ç□B

**ICM/sRGB , ðŽg—p, μ, Ā, í□AŽæ, è□ž, Ý, ©, ç^óü, Ü, Ā, ìŽè□‡**

1. Windows98/2000, □ê□‡, íA[‰æ-È, ìfvf□pfefB], Āf, fff^—p, ìjff%□[fvf□ftf@fCf<, ð^Ç  
%Ā, μ, Ü, •□BŽè□‡, ìŽÝ, ì^É, è, Ā, •□B

1-1 fffXfNfgfbfv□ã, Āf}fEfX, ð%EfNfŠfbfN, μ□A[fvf□pfefB], ð^l, Ń, Ü, •□B

1-2 [□Ý^è]f^fu, ðfNfŠfbfN, μ□A□m□Ú□×□nf{f^f“, ðfNfŠfbfN, μ, Ü, •□B

1-3 [□F, ìŠÇ—□]f^fu, ðfNfŠfbfN, μ□A, ¯Žg, ç, ìf, fff^—p, ìjff%□[fvf□ftf@fCf<, ð^Ç%Ā, μ, Ü, •□B

f, fff^—p, ìjff%□[fvf□ftf@fCf<, í□AfvfŠf“f^fhf%□fCfo, ©, ç^ñ<Ý, ³, é, é, à, ì, Ā, •□B, » , ì, ½, ß□A^È%□, ì“à—e, É, Ā, ç  
, Ā, ìf, fff^, ìf□□[f]□[.É, ¯-â, ç□‡, í, ¹, ¾, ³, ç□B

□E , ¯Žg, ç, ìf, fff^—p, ìjff%□[fvf□ftf@fCf<, a^ñ<Ý, ³, é, Ā, ç, é, ©, Ç, x, ©

□E ^ñ<Ý, ³, é, Ā, ç, é, í□A, » , ìfvf□ftf@fCf<-¾

^ñ<Ý, ³, é, Ā, ç, É, ç□ê□‡□AfvfŠf“f^fhf%□fCfo, ðCE´□e, â^óü•”, É<ß, Ā, ¯, , é, ±, Æ, í, Ā, «, Ü, ¹, ñ□B

2. Windows98/2000, ð, ¯Žg, ç, Ā□A^óü, ÉŽg—p, , éfAfvfŠfP□[fvfŠf“f^fhf%□fCfo, a sRGB, É^í%ž, μ, Ā, ç  
, é□ê□‡, í□A□uŠĀ«□Ý^è□v, È, Ç, ĀsRGB, ðŽg—p, , é, æ, x, É□Ý^è, μ, Ü, •□B□Ú, μ, í, ¯Žg, ç, ìfAfvfŠfP□[fvfŠf“f^  
ftfg, ìŽæ^μ□à-¾□^, ð, ²—, , ¾, ³, ç□B

3. EPSON TWAIN , ì [ŠĀ«□Ý^è]  
, Ā□A□m□ICM□n, ð^l^ð, μ, Ü, •□BWindows98/2000, □ê□‡, í, ³, ç, É□AsRGB, ©fffBfXfvfCfC, ì, ç, ç, ©, ð^l^ð, μ, Ü, •□  
B

4. %œ^œ, ðŽæ, è□ž, Ý, Ü, •□B

5. ICM□i sRGB □j , ðŽg—p, μ, ĀŽæ, è□ž, ñ, ¾%œ^œ, ð^óü, , éŽž, í□AfvfŠf“f^fhf%□fCfo, ĀICM□i sRGB  
□j, ð^l^ð□ION□j, μ, Ü, •□B□Ú, μ, í, □AfvfŠf“f^fhf%□fCfo, ìŽæ^μ□à-¾□^, ð, ²—, , ¾, ³, ç□B

## [fCf][fW]SCEä] f\_fCfAf\_fOf{fbfNfX

%œ'œ,î-¾^Ä,ð'²@,Ä,«,Ü,·BmOKnf{f^f",ÄY'è,ª—LCEø,É,È,èAmfLfff"fZf<nf{f^f",Ä-³CEø,É,È,è,Ü,·B

### ~I

~I,AE,ÍA%œ'œ,î-¾^Äi~ICEð—Êj,ì,±,AE,Ä,·B

fRf"fgf%ofXfgi-¾^Ä,ì·j,É'â,«,È%œ<ç,ð—^,ì,,ÉA%œ'œ'S'ì,î-¾^Ä,ð'²@,Ä,«,Ü,·B'S'ì,É^Ä,ç %œ'œ,â-¾,é,ç%œ'œ,É'Í,μ,Ä—LCEø,Ä,·BfXf%ofCf\_[]δ[]%E,É"®,©,·,©A"'I,ð"ü—Í,μ,Ä'²@,μ,Ü,·B

~I,ofnfCf%ofCfj,AE~A"®,μ,Ä,,èA~I,òY'è,ð·ì,ì,é,AEAfncf%ofCfj,ì',ªŽ©"®"I,ÉY'è,³,è,Ü,·B

,É,·A"·ª"i,ÉfCfxf<'l,ðŽw'è,μ,È,ª,ç'²@,·,é,±,AE,à%Ä"Ä,Ä,·B,±,ìè±,ÍAfncf %ofCfjAfVffhfE"A"Z"x·â³,É,Ç,ðŽg,Ä,Ä,,¾,¾,çB

\*SÖ~A€-ÚF~I,ì'²@—á

## fKf"j}

fKf"j},AE,ÍAfncf%ofCfj,AEfVffhfE,ì'tŠO"·ª,ì"Z"x,ì,±,AE,Ä,·B

%œ'œ,î-¾,é,ç·ª,â^Ä,ç·ª,É'â,«,È%œ<ç,ð—^,ì,,ÉA'tŠO"·ªif~fbfhfg[]f"j,î-¾,é,³,ð'²@,Ä,«,Ü,·B'tŠO"·ª,ª"—,çi-¾,é,çj%œ'œ,âA"Z,çi^Ä,çj%œ'œ,É'Í,μ,Ä—LCEø,Ä,·BfXf %ofCf\_[]δ[]%E,É"®,©,·,©A"'I,ð"ü—Í,μ,Ä'²@,μ,Ü,·B

## fj, F

Ž©"®~I,ò'²@,É,æ,èfKf"j},àŽ©"®'²@,³,è,Ü,·,ªA,±,ìŽž,ìfKf"j} ,ì·W€'I,É,ÍAfXfNfŠ[]f"flfffŠfufCE[]fVfj",ìCE<%E,ªiffBfXfjCEfC,É±,í,½"'I,É,È,é,æ,ª,Éj%Ä-ì,³,è,Ü,·B

\*SÖ~A€-ÚFfKf"j,ì'²@—á

## fncf%ofCfj

fncf%ofCfj,AE,ÍA%œ'œ,ìÄ,à-¾,é,ç·ª,ì,±,AE,Ä,·B

%œ'œ,ìfncf%ofCfjgfcfxf<[]Ä,à-¾,é,ç·ª,ì'j,ð'²@,·,é<@"Ä,·BfXf%ofCf\_[]δ[]%E,É"®,©,·,©A"'I,ð"ü—Í,μ,Ä'²@,μ,Ü,·B

fncf%ofCfj,ÍI,AE~A"®,μ,Ä,,èAfnfCf%ofCfj,ìY'è,ð·ì,ì,é,AE~I,ò',ì',ªŽ©"®"I,ÉY'è,³,è,Ü,·B

\*SÖ~A€-ÚFfncf%ofCfj,ì'²@—á

## •Ö—~ ,ÈXfjCfj{f^f"

fncf%ofCfj,ìXfjCfj{f^f",ðfNfŠfbfN,·,é,AEAf) fEfxj[]fXf<,ªfXfjCfj,ìŠG,É·ì,í,è,Ü,·BfVfCfj... []%œ'œ,ì^è"O-¾,é,ç·ª,ðfNfŠfbfN,·,é,AEÄ,»,—ì^æ\*1 ,ðfncf%ofCfj\*2 ,AE,μ,ÄA%œ'œ'S'ì,î-¾^Ä,ð'²@,Ä,«,Ü,·B

,É,·AfXfjCfj{f^f",É,æ,é'²@,ð'tŽ~ ,μ,½,çè±,ÍAfL[]f{[]fh,ìEscfL[]δ%Y,μ,Ä,,¾,¾,çB

\*1 'I'ð—ì^æifsfNfZf<[]ÍA[]mŠÄ<<Y'ènf\_fCfAf\_fO,Ä'²@,Ä,«,Ü,·B

\*2 0o—l'iqi"Z"xqj,í245 <ß-T,É,È,è,Ü,·0B0o—l'i,l'0A0m"Z"x·â0³0nf\_fCfAf0fO,Â·ï0X%0Â"\,Â,·0B

### fVffffhfE

fVffffhfE,Æ,í0A%0æ'0e,l'0Ã,à^Ã,ç·"·ª,i,±,Æ,Ã,·0B

%0æ'0e,l'fVffffhfEfcEfcx<0i0Ã,à^Ã,ç·"·ª,i'0j,ð'²00@,·,é<@"\,Â,·0BfXf%0fCf\_0[,ð000%0E,É"®,©,·,©00A00"l,ð"ü—í,μ,À'²00@,μ,Ü,·0B

\*SÖ~A0€-Ú0FfVffffhfE,l'²00@—á

### •Ö—~,ÈjXf|fCfjf{f^f"

fVffffhfE,l'fXf|fCfjf{f^f",ðfNfŠfbfN,·,é,Æ0A0f}fEfcXfj0[f\<,ªfXf|fCfjg,ìŠG,É·ï,í,è,Ü,·0Bfvf0Efcfrf...  
0[0%0æ'0e,l'^è"0^Ã,ç·"·ª,ðfNfŠfbfN,·,é,Æ0A,»,l—l^æ\*1,ðfVffffhfE\*2,Æ,μ,À0A%0æ'0e'S'ì,l)-  
¾^Ã,ð'²00@,Â,«,Ü,·0B  
,È,"0A0fXf|fCfjf{f^f",É,æ,é'²00@,ð'tŽ~·,μ,½,ç0ê0‡,í0A0l00[f{00[fh,ìEscfL00[,ð%0ÿ,μ,À,,¾,¾,ç0‡0B  
\*1 'l'ð—l^æ0ifsfnfzfc0j,í0A0mŠÂ<<0'Y'è0nf\_fCfAf0fO,Â'²00@,Â,«,Ü,·0B

\*2 0o—l'iqi"Z"xqj,í8 <ß-T,É,È,è,Ü,·0B0o—l'i,l'0A0m"Z"x·â0³0nf\_fCfAf0fO,Â·ï0X%0Â"\,Â,·0B

### ,μ,«,ç'l

,μ,«,ç'l,Æ,í0A%0æ'0e,ð",©00·,ìf,fmfNf00i2  
'l'0jff0[f^,ÃŽæ,è0ž,pŽž,ì0A"0·,ì<«,ðCE^,ß,é,à,ì,Â,·0B0mfCf00[fWf^fCfV0nf\_fCfAf0fO,Â0A·\  
CE>0F000f,fmfNf00Af,fmfNf00fVfVf‡f"00,È,μ,É0Y'è,μ,½0ê0‡,É—LCE0,Â,·0B

,±,ì0ê0‡0A-¾,é,¾,í0 0`255,Â·\,¾,é,Ü,·,ª0A'É0í110,ì,μ,«,ç'l,ð·ï,l,é,±  
,Æ,É,æ,è0A0·,Æ,μ,ÃŽæ,è0ž,p'í^í,ª·ï,í,è,Ü,·0B·0ŽšCE'0e,â0}-  
É,È,Ç,ìžæ,è0ž,ÿ,Â0A·0Žš,â0ü,ª,©,·,è,é0ê0‡,É—LCE0,Â,·0B

\*SÖ~A0€-Ú0F,μ,«,ç'l,l'²00@—á

### •0ŽšCE'0e,ìžæ,è0ž,Y,Â"FŽ~—,ª—Ç,,È,çŽž,í

0mfCf00[fWf^fCfV0nf\_fCfAf0fO,ì0mf,fmfNf00fVfVf‡f"0n,ð0m,È,μ0n,É0Y'è,μ,½0ă,Â0A·0Žš,ª,©,·,è,é0ê0‡,í,  
μ,«,ç'l,ì00"l,ð'â,«,ç·ù,É0A·0Žš,ª,Â,Ô,è,é0'¾,é0j0ê0‡,í,μ,«,ç'l,ì00"l,ð0-,¾,ç·ù,É'²00@,μ,À,,¾,¾,ç0‡0B

0Ã"K,È,μ,«,ç'l,íCE'0e,ì0ó'Ô,É,æ,Â,Ã^Ü,È,è,Ü,·,ì,Â0A0EJ,è·Ô,μšm"F,μ,È,ª,ç0Ã"K,È'²00@'l,ðCE0,Â,^,Ä,-  
,¾,¾,ç0‡0B

~l o, l'² @ — á



òÝ'è[] òÝ'è[]{

fKf“f},i'²□@—á



□Y'è□| □Y'è□{

fnfCf%ofCfg,i'²®—á



Ÿ'è| Ÿ'è{

fVffhfE,i'²®—á



Ÿ'è| Ÿ'è{

、μ、¢、l、l'²□@—á

●35万画素の高精彩デジタルカメラが小型化。取り外し可能な液晶モニタ標準装備。●高画質モード30枚(標準画質モード60枚)を記録。オプションメモリ増設可能。●7種類のカラー。●各種ソフトとパソコンとの接続ケーブルが入ったオールインワン仕様。

●35万画素の高精彩デジタルカメラが小型化。取り外し可能な液晶モニタ標準装備。●高画質モード30枚(標準画質モード60枚)を記録。オプションメモリ増設可能。●7種類のカラー。●各種ソフトとパソコンとの接続ケーブルが入ったオールインワン仕様。

□Y`è□ □Y`è{



fVfffhfE•",đ□o;□F

fVfffhfE•"•ª,đ□,μ-¾,é,,μ,Ä□AfVfffhfE•",iŠK'²•\CE»,đ-L,©,É,μ,Ü;□B  
%œ'œ,đ^óü,μ,½Žž,É□AfVfffhfE•",ª□•fxf^,É,È,Á,Ä,μ,Ü,æ□ê□‡,É—  
LCEø,Å,·□B

## ["Z"x•â³] f\_CfAfOf{fbfNfX

fg[f" <Èü, ð•ÒW, , é, ±, Æ, Å, Å%æ'œ, ì"Z"x, ðfof%of" fX—Ç, Ždã, °, é, ±, Æ, ð, Å, «, Ü, ·BmOKnf{f^f", ÅY'è, ð—LCEø, É, È, èA[mfLfff" fZf·nf{f^f", Å-³CEø, É, È, è, Ü, ·B

## f fff"flf<

"Z"x•â³, , éf" fff"flf<F, ðARGB'S'ìAR, ì, ÝAG, ì, ÝAB, ì, Ý, ì't, ©, ç'l'ð, µ, Ü, ·iRFFÔAGF—  
ÎABFFÅjB

%æ'œ'S'ì, ì"Z"x, ð•â³, , éêê, ÍRGB 'S'ì, ì, Ü, ÜAŠeF, ì, Ý•â³, , éêê, ÍŠeF, ð'l'ð, µ, Ü, ·B

## fg[f" <ÈüfGffBf^

fg[f" <Èüüã, ì5 "\_, ðfhf%ofbfo, µAfg[f" <Èü, ðŽ©—R, É•â³, Å, «, Ü, ·B

fOf%oft, ì%ø; Ž², ÍÉ' e, ì-¼^ Åi"ü—Í'ij, ðŽ!, µAocŽ², ÍŽæ, èž, ÝCEä, ì%æ'œ, ì-¼^ Åi"o—Í'ij, ðŽ!, µ, Ü, ·B

%%ŠúY'è, Å, íAfvffhfEifOf%oft%°j, ìo—Í'l, í8 AfnfCf%ofCfgifOf%oft%Eãj, ìo—Í'l, í245, É, È, Å, ç, Ü, ·, ì, ÅAfvffhfE, ð•fxf^i0 j, É, ð, , AfnfCf%ofCfg, ð"i255 j, É, Æ, ì, ð, , Žæ, èž, Ý, Ü, ·B

•â³'t, ÉA•â³'O, ìó'Ó, É-ß, µ, ½, , È, Å, ½êê, íA"Z"x•â³fjf...[ , ÅmfŠjAñ, ð'l, ñ, Å, ¾, ç, çB

\*ŠÖ~A€-ÚFfg[f" <Èü, ì•â³—á

## fAfEfgfvfbfg

fg[f" <Èü, ð•â³, , é, ÆAŠefCfxf<, ì'l, ð~A" @, µ, Ä•Ž!, ð, è, Ü, ·B, ±, ±, É"l, ð"ü—  
ì, µ, ÅAfg[f" <Èü, ð•â³, , é, ±, Æ, à, Å, «, Ü, ·B"ü—Í, Å, «, é"l, í0 ²255 , Å, ·B

1/4 fg[f" Af~fbfhfg[f" A3/4

fg[f" , ì, É, , éf" fFbfNf{fbfNfX, ðf" fFbfN, , é, ÆAf" fFbfN, µ, ½fCfxf<, ì"Z"x, É%œ<ç, ð—  
^, ì, , ÉA'¼, ìfCfxf<, ì"Z"x, ð•â³, Å, «, Ü, ·B

## "Z"x•â³-¼

, ±, ±, É, íA'è< j, Ý, , æ, Ñ•Ü'ij, Ý, ì"Z"x•â³-¼, ð•Ž!, ð, è, Ü, ·B, ±, è, ç, ðCE³, ÉA%æ'œ, Éj, í, Å" ÷'²j @, µ, Ä, -  
, ¾, ç, çB'è< j, Ý, ìfjf...[ , ìŽÝ, ì5, Å, Å, ·B

fŠjA^ÈŠO, ìfjf...[ , íAjjf%[]fXf%ofCfhftfBf<f€, ìŽæ, èž, Ý, , æ, ÑAICM , ðŽg—p, µ, È, çêê, É"KØ, ÈCEø  
%ø, ð¾, ç, è, Ü, ·B

fŠjA [ "Z"x•â³, ð, µ, Ü, ñBfvfCfrf...[ %æ'œã, Å-¼^ Å, É-  
à'è, ð, È, , é, íAfŠjA, ì, Ü, Ü, ÅŽæ, èž, ñ, Å, -  
, ¾, ç, çB, È, "AfŠjA, Å, íAfvffhfE8 AfnfCf%ofCfg245  
, ÉY'è, ð, è, Å, , ðAfvffhfE, ð•fxf^i0 j, É, ð, , AfnfCf%ofCfg, ð"i255  
j, É, Æ, ì, ð, , Žæ, èž, Ý, Ü, ·B

, æ, èó, çŠ', j, ÉF ~ ofAf" f\_ [ , È%æ'œ, ðA, æ, èó, çi-¼, é, çjŠ  
, j, É•â³, µ, Ü, ·B i~ ofAf" f\_ [ , Æ, íA~ i"o•s'<^ Å, ç, ±, Æ, ðCE¾, ç, Ü, ·j

, æ, èd, çŠ', j, ÉF ~ ofl fo [ , È%æ'œ, ðA, æ, èd, çi^ Å, çjŠ  
, j, É•â³, µ, Ü, ·B i~ ofl fo [ , Æ, íA~ i"o%ß'½j-¾, é, ç, ±, Æ, ðCE¾, ç, Ü, ·j

ftf%fbfg,ÉF

fRf“fgf%ofXfgi-¾^Ã,ì·j,ª,.,-,é%æ‘œ,ðAŽ©‘R,ÈfRf“fgf  
%ofXfg,É•â³,μ,Û,·B

fRf“fgf%ofXfg,ÉF

fRf“fgf%ofXfgi-¾^Ã,ì·j,ª‘á,.,-,é%æ‘œ,ÉAfjŠfnfŠ,ð•t,¯,Û,·B

### m•Û‘nf{f^f“

ì-μ,½fg[f“<Èü,ð“o~^,μ,Û,·B

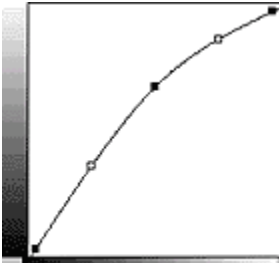
\*ŠÖ~A€-ÚF“Z“x•â³,ì“o~^

### míœnf{f^f“

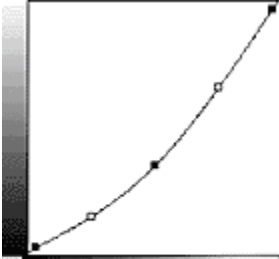
ì-É“o~^,μ,½fg[f“<Èü,ðíœ,μ,Û,·B

\*ŠÖ~A€-ÚF“Z“x•â³,ìíœ

fg [f "·Èú,ì•â³—á



S 3/4 M 1/4 H



S 3/4 M 1/4 H



□

□

"Z"x•â³,ì"o~^

"Z"x•â³,ìŸ'è,ðV<K,É"o~^A,Ü,½,í•ïX,,éžè±,ížŸ,ì'Ê,è,Å,·B

1. fg[f"«Èü,ðì¬,μ,Ü,·B

2. <Èü,âCE^'è,μ,½,çA["Z"x•â³-¼] fefLfXfgf{fbfNfX,ÉV<K-¼ì,ð"ü—í,μ,Ü,·B"ü—  
í,Å,«,é•¶žš",íA'¼šp,Å32•¶žšA'Sšp,Å16•¶žš^È"à,Å,·B

3. [•Û'¶] f{f^f",ðfNfšfbfN,μ,Ü,·B

[OK] f{f^f",Å,íAŸ'è,μ,½"à—e,í"o~^,³,ê,Ü,¹,ñB

4. [OK] f{f^f",ðfNfšfbfN,μ,Ü,·B"o~^,âžÅs,³,êAf\_fCfAfOf{fbfNfX,â•Å,¶,Ü,·B

,±,±,Å [fLfff"fZf<] f{f^f",ðfNfšfbfN,,é,ÆA"o~^,³,ê,Ü,¹,ñB

## "Z"x•â³,ìíœ

"Z"x•â³,ìíœ'è,ðíœ,·,éžè,Ížÿ,ì'Ê,è,Â,·B

,È,·A×Žž,É'è<`³,é,Ä,ç,éfg[f"Èü,ííœ,Â,«,Ü,¹,ñB

1. íœ,·,é"Z"x•â³-¼,ðšfXfg,©,ç'l'ð,μA[íœ] f{f^f",ðfNfšfbfN,μ,Ü,·B
2. íœ,ìšm"F%œ-Ê,ª·ž|,³,é,é,ì,ÂA,æ,¯,ê,îm,í,çnf{f^f",ðfNfšfbfN,μ,Ü,·B
3. [OK] f{f^f",ðfNfšfbfN,μ,Ü,·Bíœ,ªžÀs,³,êAf\_cfAfOf{fbfNfX,ª·Â,¶,Ü,·B  
,±,±,Â [flfff"fzf<] f{f^f",ðfNfšfbfN,·,é,ÆAíœ,³,é,Ü,¹,ñB

**[fjff%o[]l'²[]@] f\_fCfAf[]fOf{fbfNfX**

%oæ'œ,[]F, ,ç,ð'²[]@,Å,«,Ü,·[]B[]mOK[]nf{f^f",Å[]Ý'è,ª—LCEø,É,È,è[]A[]mfLfff"fZf<[]nf{f^f",Å-³CEø,É,È,è,Ü,·[]B

**fOfCE[][fof%of"fX•â[]³**

fOfCE[][fof%of"fX,Æ,Í[]A'Í'ð,µ,½[]F,ª-³[]Ê[]F[]i""[]•[]AfOfCE[][]j,Æ,È,é,æ,æ,É[]A  
%oæ'œ'S'Í,[]F,©,Ô,è,ðŽæ,è[]œ,,±,Æ,ª,Å,«,é<@"\\,Å[]AZŽ'Ï,ì,æ,æ,È[]ê[]‡,É—LCEø,Å,·[]B

[]E CE'[]e,ì't,É[]A-{-^,í-³[]Ê[]F[]i""[]•[]j,Æ,È,é%Ó[]Š,ª, ,é[]ê[]‡

[]E CE'[]e,ì't,É[]A[]Æ-¾CEø,»,,ì,à,[]A,à,µ,,í,,»,,ê,É<ß,ç[]F,ª, ,é[]ê[]‡

\*SÖ~A[]€-Ú[]FfOfCE[][fof%of"fX.l'²[]@—á

**•Ö-~,ÈfXfjCfGf{f^f" **

fOfCE[][fof%of"fX•â[]³,ìfXfjCfGf{f^f",ðfNfŠfbfN,,é,Æ[]Afj}fEfXfj[][fV<,afXfjCfG,ìŠG,É•í,í,è,Ü,·[]BfvfCEfj...  
[][%oæ'œ't,[]A-{-^,í""[]•,ìfOfCE[][,Æ,È,é•""ª,ðfNfŠfbfN,µ,ÅfXf%ofCfhfo[],ð'²[]@,; ,é,Æ[]A,»,ì—  
ì^æ\*,ª""[]•,ìfOfCE[][,É,È,é,æ,æ,É[]A'S'Í,[]F,ð'²[]@,Å,«,Ü,·[]B  
,È,·[]AfXfjCfGf{f^f",É,æ,é'²[]@,ð'tŽ~,,µ,½,ç[]ê[]‡,[]AfL[][f{[][fh,ìEscfL[],ð%ÿ,µ,Ä,,¾,¾,¾,ç[]B  
\* 'Í'ð—ì^æ[]ifsfNfZf<[]j,[]A[]mŠÅ<<[]Ý'è[]nf\_fCfAf[]fO,Å'²[]@,Å,«,Ü,·[]B

Žÿ,ìŽg—p—á,ðŽQ[][,ÉŠ^—p,µ,Ä,,¾,¾,¾,ç[]B

[]E []V•Žt[]ã,ìftf<jjff%o[][ŽÊ[]^,ðŽæ,è[]ž,þ[]ê[]‡[]F  
fXfjCfG,Å[]V•Žt,ì'n,ì"ª,ð'Í'ð,µ[]AfXf%ofCfhfo[],Å100 ,É[]Ý'è,,é

¥ []A<ó%o²,ÅŽB%oe,µ,½fjWftfBf<f€,ðŽæ,è[]ž,þ[]ê[]‡[]F  
fXfjCfG,Å<ó,ð'Í'ð,µ[]AfXf%ofCfhfo[],Å"÷'²[]@,,é

¥ fXfGf[]{,ðŽg,í,,É[]AŽª"à,ÅŽB%oe,µ,½ŽÊ[]^,ðŽæ,è[]ž,þ[]ê[]‡[]F  
fXfjCfG,Å""•Ç[]EfOfCE[][,ì•ž[]E[]Æ-¾CEø,È,Ç,ð'Í'ð,µ[]AfXf%ofCfhfo[],Å"÷'²[]@,,é

¥ []l'·,ìŽÊ[]^,ðŽæ,è[]ž,þ[]ê[]‡[]F  
fXfjCfG,Å""-Ú[]AŽ•,È,Ç,ð'Í'ð,µ[]AfXf%ofCfhfo[],Å"÷'²[]@,,é

**•â[]³fjff%o[][f{fbfNfX**

fXfjCfG,Å'Í'ð,µ,½[]F,ª[]A•â[]³fjff%o[][f{fbfNfX[]i[][]j,ÉŽ!,³,è,Ü,·[]B

fXf%ofCf[][,ð[][]%oE,É"®,©,,·,©[]A""'l,ð"ü—Í,,é,Æ[]A'Í'ð,µ,½[]F,ð"÷'²[]@,Å,«,Ü,·[]B'²[]@'l,Í0 []`100  
,Å,·[]i""'l,É,æ,Å,Å,[]A%oæ'œ,ì-¾^Å,ª'½[]•í"o»,.,é,±,Æ,ª, ,è,Ü,·[]j[]B

0 ,[]AfOfCE[][fof%of"fX<@"\\,ð-³CEø,É,µ,Ü,·[]B,½,¾,µ[]AfXfjCfG,µ,½[]F,ì[]î•ñ,í•ÚŽ[]µ,Ä,ç,Ü,,ì,Å[]A[]Ä'²[]@  
%oÅ"\\,Å,·[]B100 ,[]A'Í'ð,µ,½[]F,ªŠ@'S,È-³[]Ê[]F[]i""[]•[]AfOfCE[][]j,Æ,È,é,æ,æ,É[]A  
%oæ'œ'S'Í,[]F,©,Ô,è,ðŽæ,è[]œ,«,Ü,·[]B

'²[]@,³,è,½[]F,[]A•â[]³fjff%o[][f{fbfNfX[]i[]%E[]j,É•Ž!,³,è,Ü,·[]B

## É“x

É“x,Æ,íA[F,ì, , ,â,©,³iif“xj,ì,±,Æ,Ä,·B

fxf%ofX,ÉY’è,·,é,Æ[F,Y,â<,,È,è,Ü,·Bf}fCfifX,ÉY’è,·,é,Æ[F,Y,â,È,,È,èi-³ÉF%»»,μ,Ä,ç  
,«jAfofCE[,É<ß,,È,Á,Ä,ç,«,Ü,·B

fXf%ofCf\_[,ðq%oE,É“® ,© ,· ,©A“”l,ð“ü—í,μ,Ä’²® ,μ,Ü,·B

\*ŠÖ~A€-ÚFÉ“x,ì’²®—á



fOfœ [fof%of“fX,i'² @—á



Ÿ'è0 Ÿ'è100

☐É“x,ì’²☐@—á



☐Ÿ’è☐| ☐Ÿ’è☐{

## ["Å" \_ '2"®]f\_fcAf\_fOf{fbfNfX

["Å" \_ ^Ê'u (CE 'e,Éfsf"fg,ª□‡,xfZf"jT,ì^Ê'u) ,ð'2"®,Å,«,Ü,·□B

### '2"® •û-@

1. ,Ü, , [AUTO] f{f^f" ,É,æ,éŽ©" ® '2"®,ðŽŽ,µ,Ü,·□BfvfCEfrf...  
□[fEfBf"fhfE,Å□Å" \_ '2"®,µ,½,çŽæ,è□ž,Ý~g,ª'1'ð,³,é,Å,ç,é,±  
,Æ,ðŠm"F,µ□A□mAUTO□nf{f^f" ,ðfNfŠfbfN,µ,Ü,·□B,±,é,Å□Å" \_ ,ª□‡,i,î□A'2"®,í□I—¹,Å,·□B  
,» ,é,Å,à□Å" \_ ,ª□‡,í,È,ç□é□‡,í□AŽè□‡2,É□i,ñ,Å,,³/4,³,ç□B
2. fXf%ofCfhfo□[ ,ð□¶%oE,É" ® ,©,µ,Å -2mm ,©,ç 6mm ,ìŠÔ,Å'2"®,µ,Ü,·□B
3. □mŠm"F□nf{f^f" ,ðfNfŠfbfN, ,é,Æ□A'2"® 'O,Æ'2"® CEä,ì%oæ'œ,ðŠm"F,Å,« ,Ü,·□B,±,ìŽž□ÄfvfCEfrf...  
□[ ,³,é,Ü,·□B
4. □mOK]f{f^f" ,Å'2"®,ªŽÀ□s,³,é,Ü,·□B□mfLfff"fZf<□nf{f^f" ,Å'tŽ~ ,³,é,Ü,·□B



fvfCEfrf...[]fEfBf"fhfE,a•\Ži,³,ê,Ü,.[]B

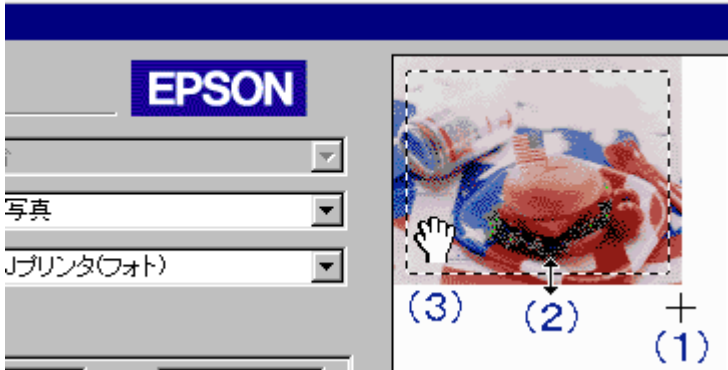
[]%Šú[]Ý'è,Å,í[]AfvfCEfrf...[]CEă[]AŽ©“@“l,É~l[]o[]i-¾^Ä[]j,ð'[]@,μ,Ü,.[]B



ŽY,Ö >>

**Žæ, èž, ÝŽ èi, » , i2 j**

3. fvfCEfrf... [fEfBf“fhfE, ÅAŽæ, èž, Ý~g, ðfhf%fbfO, µ, Äi~µ, Ü, ·B



i1 j f [f<, æ {, ÌŽž, ÉAŽæ, èž, Ý~g, ðfhf%fbfO, µ, Äi~µ, Ü, ·B

i2 j f [f<, ðŽæ, èž, Ý~g, Ìüä, É^Ú“ @, ·, é, Æ-î ó, ÌCE` , É, È, è, Ü, ·B, ±, ÌŽžAŽæ, èž, Ý~g, ðfhf %fbfO, É, æ, èŠg^â^k~Å, <, Ü, ·B

i3 j f [f<, ðŽæ, èž, Ý~g, Ìt, É^Ú“ @, ·, é, ÆŽè, ÌCE` , É, È, è, Ü, ·B, ±, ÌŽžAŽæ, èž, Ý~g, ðfhf %fbfO, É, æ, è^Ú“ @, Å, <, Ü, ·B

i fhf%fbfO¥¥¥f}fEfXf{f^f“ , ð%oÝ, µ, È, æ, ç}fEfX, ð“ @, ©, ·, ±, Æ

4. mfY [fEf v fCEfrf... [ [nf {f^f“ , ðfNfŠfbfN, µ, ÄŽæ, èž, Ý~g, ðfY [f€•Ž!, µAŽæ, èž, p— Ìæ, ð” ÷ ’² @, µ, Ü, ·B

%ŠúÝ’è, Å, ÍAfY [fEf v fCEfrf... [CEãAŽ©“ @“ I, É~I o i-¾^Äj, ð’² @, µ, Ü, ·B



ŽŸ,Ö >>

Žæ, èž, Ý~g, ÍA, ç, , Â, Å, àìì¬%oÂ"\  
, Å. B~g, ì't, É•Ê, ì~g, ðì, è, ½, çêç, ÍA~g, ìŠO, Åìì¬, μA~g, ì't, Éfhf  
%ofbfO, μ, Ä^Ú"®, μ, Ä, , ¾, ¾, çB



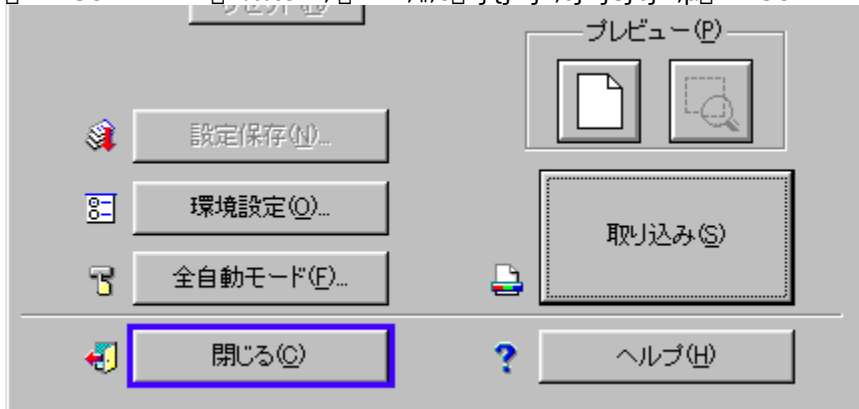
**Žæ,èž,ÝŽèi,»i3j**

5. EPSON TWAIN n%æ-Ê,ì mŽæ,èž,Ýnf{f^f“,ðfNfŠfbfN,μ,ÄA%æ’œ,ðŽæ,èž,Ý,Ü,·B

Žæ,èž,ñ,¼%æ’œ,ªA[V<Kftf@fCf<,Æ,μ,Ä•Ž!,³,è,Ü,·B iEPSON TWAIN,ìCEä,ë,É  
%B,è,ÄCE©,!,È,¢èi,ª, ,è,Ü,·j



6. EPSON TWAIN n%æ-Ê,ì m•Ä,¶,énf{f^f“,ðfNfŠfbfN,μAEPSON TWAIN,ð•Ä,¶,Ü,·B



,±,ìCEä,ìA%æ’œ,ð•Ü’¶,μ,Ü,·B•Ü’¶Žèi,É,Ä,¢,Ä,ìA,“Žg,¢,ìTWAIN’í%žfjftfg,ìŽæ^μà-¼’,ð,²—,-  
,¼,³,¢B

**fCf“fEfBf“fhfE,ìfwf<fv,É-ß,é**

## Žæ, èž, Ýg, ì, è•ú



□i1□j f□[f<, ðžž, É□AŽæ, èž, Ýg, ðhf%fbfO, μ, Ä□ì□¬, μ, Ü, ·□B

□i2□j f□[f<, ðŽæ, èž, Ýg, ì□ü□ä, É^Ú“® , ·, é, Æ-î^ó, ìCE` , É, È, è, Ü, ·□B, ±, ìŽž□AŽæ, èž, Ýg, ðhf%fbfO, É, æ, èŠg'â^□k□¬, Å, «, Ü, ·□B

□i3□j f□[f<, ðŽæ, èž, Ýg, ì't, É^Ú“® , ·, é, ÆŽè, ìCE` , É, È, è, Ü, ·□B, ±, ìŽž□AŽæ, èž, Ýg, ðhf%fbfO, É, æ, è^Ú“® , Å, «, Ü, ·□B

□i fhf%fbfO¥¥¥f}fEfXf{f^f“ , ð%Ÿ, μ, È, <sup>a</sup>, çf}fEfX, ð“® , © , ·, ±, Æ

Žæ, èž, Ý~g, íA, ç,, Â, Å, àiï¬%oÂ" \. Å, ·B~g, ìt, É•Ê, ì~g, ði, è, ½, çêë, íA~g, ìŠO, Åiï¬, µA~g, ìt, Éfhf  
%ofbfO, µ, Ä^Ú" ©, µ, Ä,, ¾, ³, çB

