

**DLL Checker**

,Ó^ó—Ç•i presents

**DLL Checker**

**Version 1.43**

Copyright (C) 1999-2000 T. Funayama

□@DLL Checker,Í□AfvfXfef€É,Ç,ÌĒ¾ĒÊ,lf%of“f^fCf€f%ofCfuf  
%ofŠ,afCf“fXfg□[f<,³,ê,Ä,ç,é,©Šm”F,·,é,½,ß,lfç□[f<,Ä,·□B

□@,Ó^ó—Ç•i,Å”z•z,μ,Ä,ç,é,ftfgfEjFfA,à□A,»,ì¹²,,ªVisual Basic 5.0,lf  
%of“f^fCf€f%ofCfuf%ofŠ,ð•K—v,Æ,μ,Û,·,ªAZÀ□Ú,ì,Æ,±,ë□AZ©•ª,lfVfXfef€  
,É,Ç,ÌĒ¾ĒÊ,lf%of“f^fCf€f<□[f”f”,afCf“fXfg□[f<□Ì,Ý,©□A-¾Šm,É”c^¬,μ,Ä,ç  
,é□l,í,³,Û,Ç¹²,,È,ç,ÆŽv,ç,Û,·□i,©,,ç,æŽ,,à,»,ìê□l,Å,·□j□B,±,ì,æ,æ,È□è□#□ADLL  
Checker,ðŽg,æ,±,Æ,Å□AfvfXfef€É,Ç,lf%of“f^fCf€,afCf“fXfg□[f<,³,ê,Ä,ç  
,é,©,ì”àŽG”c,È-Ú^À,ª,Ä,¬,ç,ê□A,»,ÌĒã□A•K—v,Éf%of“f^fCf€f%ofCfuf  
%ofŠ,lf\_fEf“f□□[fh,ª—e^Õ,É,¬,±,È,ì,Û,·□B

□@,Û,½□ADLL Checker,Í□A,ç,í,ä,é%of“f^fCf€,Å,í, ,è,Û,¹,ñ,ªAftf@fCf<,ì³□k□E  
%ofð”€É,à,¿,ç,ç,ê,éUnlha32.dll,ÆUnzip32.dll,afVfXfef€É,ÉfCf“fXfg□[f<,³,ê,Ä,ç  
,é,©,à¹,¹,Ä•\Žì,·,é,æ,æ,É,È,Ä,Ä,ç,Û,·□B

□@DLL Checker,Åf`ffbfN,μ,½Ē<%oÊ,Í□ADLL Checker□l—  
¹Žž,É□AfeflfXfgftf@fCf<,É□o—í,·,é,±,Æ,ª,Ä,«,Û,·□B-{ftfgfEjFfA,ªŠF—  
l,ìWindowsŠÂ<«,ì□®”õ□E^ÚŽ□,É-ð—§,Ä,±  
,Æ,ð□ìŽÒ,Æ,μ,Ä,Í□S,©,çŠè,Á,Ä,¬,è,Û,·□B

□@,È,¬□A“-’R,Æ,ç,ì,î“-’R,Å,·,ª□A-{fvf□fOf%of€,ìŽÀ□s,É,Í□AŠeŽíf%of“f^fCf€f  
%ofCfuf%ofŠ,Í□A•K—v, ,è,Û,¹,ñ□B

fCf“fXfg□[f<•û-@  
Žg—p•û-@  
%oü”Ä—š—ð  
’~□ìĒ “™

□@-{ftfgfEjFfA,Í□A^È%oº,ìŠÂ<<,ÅŠJ”,¬,æ,Ñ“®□ifefXfg,ð,¬,±,È,Ä,Ä,¬,è,Û,·□B-  
{ftfgfEjFfA,ª□A”®□ì,μ,È,ç□è□#,Í□A<@ŠB,ì□□-□AfvfXfg□[f<,³,ê,Ä,ç  
,élfyfĒ□[fefBf“fOfVfXfef€,¬,æ,Ñ,»,ìfo□[fWf#f”,ð-¾<L,ìã□ìŽÒ,Û,Å,²~A—□,-  
¾,¾,ç□B%oÄ”\,ÉĒÄ,è’í^,³,¹,Ä,ç,½,¾,«,Û,·□B

“®iŠm”F<@Ží

-3^óŸŠ·<@K6-2/300

CPU	K6-2/300MHz
M/B	P5A
f□f,fš	128MB
OS	Windows98 (OEM Version) / Windows Me (Retail Version)

Panasonic Let's Note CF-M2R

CPU	Pentium III/600 MHz
f□f,fš	192MB
OS	Windows 98SE (Retail Version) / Windows2000 (Retail Version)

Š”Ÿ¾Ÿê Microsoft Visual C++ 4.0J , ,æ,Ň 5.0J (SP3)

**DLL Checker, ìfCf“fXfg□[f<**

**fCf“fXfg□[f<•û-@**

**f\_fEf“f□□[fh,μ,½fA□[fjfCfu, ìfCf“fXfg□[f<**

□@fA□[fjfCfufvf@fCf<, ì“à—e, ð“K“-ÈffBfCEfnfgfš, É%øð“€  
, μ□Adllchk.exe, ðŽÀ□s, μ, Ä,, ¾, ¾, ç□B

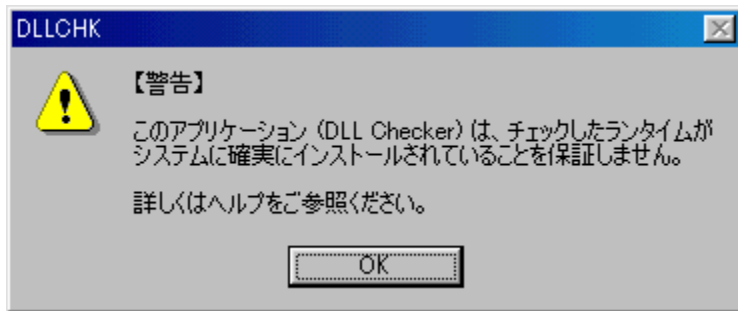
**fAf“fCf“fXfg□[f<•û-@**

□@%øð“€,, ¾, ê, ½fA□[fjfCfu, ì’t□g(DLL Checker-  
{ì(dllchk.exe)□Afwf<fvvf@fCf<(dllchk.hlp)  
, , æ, Ñ, , , Ü, , ìY’èftf@fCf<(dllchkex.ini), ðí□œ, , , é, ¾, , Å□AfAf“fCf“fXfg□[f<, ÍŠ®  
—¹, μ, Ü, ·□B

Žg—p•û-@

### DLL Checker,ìŽg—p•û-@

DLL Checker,đ<N“ ®,.,é,Æ□A^È%°°,ì□},ì,æ,α,Èf□fbfZ□[fW,ª•\Žì,³,ê,Û,·□B



DLL Checker,í□A,» ,ê,¼,ê,ìf%of“f^fCf€ ,ì‘¶□Ý,đ□A^È  
 %°°,ìfŠfXfg,É, ,é’È,è,ìDLL,ì‘¶□Ý,ì—L-³,Å,ì,YŠm”F,μ,Ä,ç,é,½,β□Af%of“f^fCf€  
 ,ª•sŠ®‘S,ÈfCf“fXfg□[f<,³,ê,Ä,ç,é%°°Å”\□«,đŠ®‘S,É,ìf`fFbfN,Å,« ,Û,¹,ñ□B, ,ç, © ,¶,  
 β,²—¹□³,¾,³,ç□B

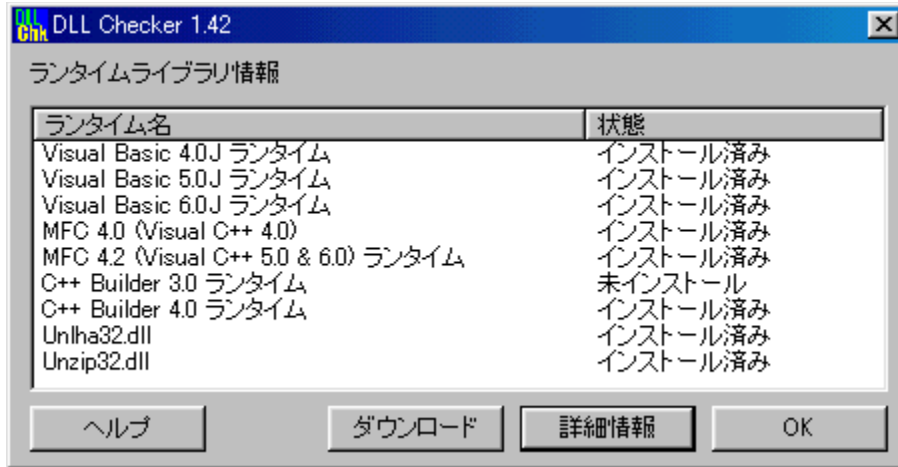
Visual Basic 4.0 f%of“f^fCf€□F	Vb4Jp32.dll, Vb40032.dll
Visual Basic 5.0 f%of“f^fCf€□F	Msvbvm50.dll, Vb5jp.dll
Visual Basic 6.0 f%of“f^fCf€□F	Msvbvm60.dll, Vb6jp.dll,
Oleaut32.dll	

MFC 4.0 (VC++ 4.0) f%of“f^fCf€□F	MFC40.dll, Msvcrt40.dll,
Ctl3d32.dll, Olepro32.dll	
MFC 4.2 (VC++ 5.0, 6.0) f%of“f^fCf€□F	MFC42.dll, Msvcrt.dll

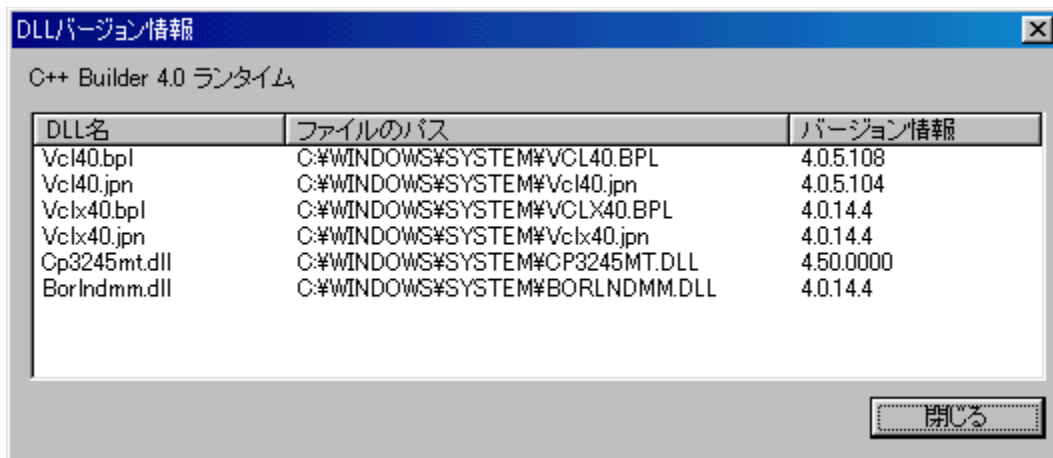
Borland C++ Builder 3□F	VCL35.bpl, ,VCL35.jpn,
Cp3240mt.dll, BorIndmm.dll	
Borland C++ Builder 4 □F	Vcl40.bpl, Vcl40.jpn, Vclx40.bpl,
Vclx40.jpn, Cp3245mt.dll, BorIndmm.dll	
Borland C++ Builder 5 □F	Vcl50.bpl, Vcl50.jpn, Vclx50.bpl,
Cc3250mt.dll, BorIndmm.dll	

Unlha32.DLL□F	Unlha32.dll
Unzip32.DLL□F	Unzip32.dll

OKf{f^f“,đ%°°Ý,.,Æ□ADLL  
 Checker,í□A,» ,ê,¼,ê,ìDLL,ª‘¶□Ý,.,é, © ,đŠm”F,μ,½CEä□ACE<%°°È,đ^È%°°,ì,æ,α  
 ,ÈfEfBf“fhfE,Å•\Žì,μ,Ä,ê,Û,·□B



»,ê,¼,ê,lf%of“f^fCf€  
 ,lfCf“fXfg[f<,ÉŠÖ,·,é□Ú,μ,¢□î•ñ,δ,Ý,½,¢□ê□‡,Í□A□Ú□×□î•ñf{f^f“,δ%oÿ,μ,Ä,-  
 ,¾,¾,¢□B,»,ê,¼,ê,lf%of“f^fCf€,δ□□-,μ,Ä,¢,éDLL,ÉŠÖ,·,é□Ú,μ,¢□î•ñ,²·\  
 Ž!,¾,ê,Ü,·□B



,à,μ□A—~—p,μ,½,¢fAfvfŠfP□[fVf‡“,δ“®,©,·,ì,É•K—v,Èf%of“f^fCf€  
 ,²fCf“fXfg[f<,¾,ê,Ä,¢,È,¢□ê□‡,Í□A□Cf“fXfg[f<,²•K—v,Èf%of“f^fCf€  
 ,δ'í'δ,μ,½¢Éã□AfeBf“fhfE%oE%o²,lf\_fEf“f□□[fhf{f^f“,δ,“,μ,Ä,,¾,¾,¢□BfEfFufuf  
 %ofEfU,²<N“®,μ,Ä□AVector,lfy□[fW,ÌSef%of“f^fCf€  
 ,lf\_fEf“f□□[fhfy□[fW,δŽ©“®“l,ÉŠJ,¢,Ä,,ê,Ü,·□B,¿,È,Ý,É□AŠJ,©,ê,éf  
 %of“f^fCf€f\_fEf“f□□[fhfy□[fW,Í□A,“,à,Éftf@fCf<fTfCfY,δŠí□€  
 ,ÉŽ,,l”»'f,Á'í'δ,μ,½,à,ì,Ä,·□BfvtfgfEfFfA,É,æ,Ä,Ä,Í□A,±,ê,¢□Á□—¢ÉÀ,lf%ofCfuf  
 %ofŠ,Ä,Í<N“®,μ,È,¢,±,Æ,à,è,Ü,·,ì,Á□A,»,l□ê□‡,Í□A,»,ê,¼,ê,lfIf“f%ofCf“fl  
 ftfgfEfFfA□ìŽÖ,ì·ù,É,“-â,¢□‡,í,¹,,¾,¾,¢□BŽQ□l,Ü,Á□A^è”É“l,Éf%of“f^fCf€f  
 %ofCfuf%ofŠ“™,lf\_fEf“f□□[fh□æ,à^È%o²,É□',¢,Ä,“,«,Ü,·□B

□EVisual Basic / Visual C++ / C++ Builder —pf%of“f^fCf€f%ofCfuf%ofŠ

Vector Software Pack

f\_fEf“f□□[fh Windows95/98—pf\ftfg/ft□[fefBfŠfefB/f%of“f^fCf€fpfbfP□[fW“™ /  
<http://www.vector.co.jp/vpack/filearea/win95/util/runtime/index.html>

□EUnlha32.DLL / Unzip32.DLL

Common Archivers Library - “□□#fA□[fjfCfo□Efvf□fWfFfNfg  
<http://www.csdinc.co.jp/archiver/main.html>

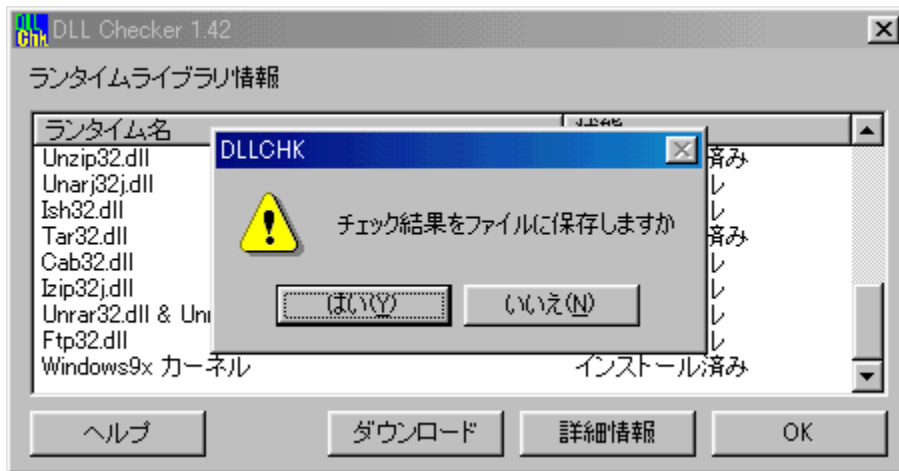
Vector Software Pack

f\_fEf“f□□[fh Windows95/98—pf\ftfg/ft□[fefBfŠfefB/ fA□[fjfCfuft□[fefBfŠfefB/  
<http://www.vector.co.jp/vpack/filearea/win95/util/arc/index.html>

f\_fEf“f□□[fh Windows95/98—pf\ftfg/ft□[fefBfŠfefB/  
fA□[fjfCfuft□[fefBfŠfefB/□,^³□k□‘CEÉŠÇ—□fvf□fOf%of€ LHA/  
<http://www.vector.co.jp/vpack/filearea/win95/util/arc/lha/index.html>

## f`fFfbfNCE<%oÊ,ì•Ù‘¶

DLL Checker,ìfEfBf“fhfE,δOKf{f^f“,δ%oÿ,μ,Ä•Â,¶,æ,α  
,Æ,·,é,Æ□Af`fFfbfNCE<%oÊ,δftf@fCf<,É□o—í,·,é,©,Ç,α,©,δ-K,Ë,éf\_fCfAf□fO,ª·\  
Ž,³,é,Ü,·□B,±,±,Å□A“,í,φ“,δ‘l,Ö,Æ□A□;%oñ,ìf`fFfbfNCE<%oÊ^è—  
,δfeflfXfgftf@fCf<,Æ,μ,Ä•Ù‘¶,·,é,±,Æ,ª,Å,«,Ü,·□B

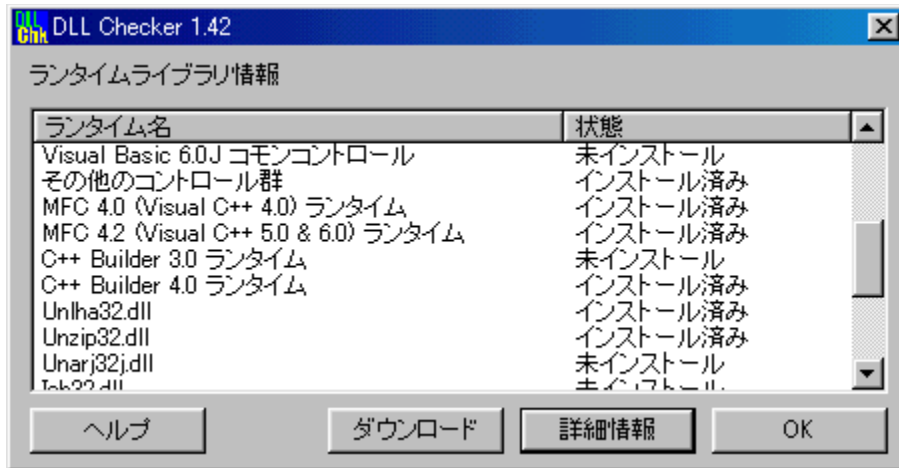
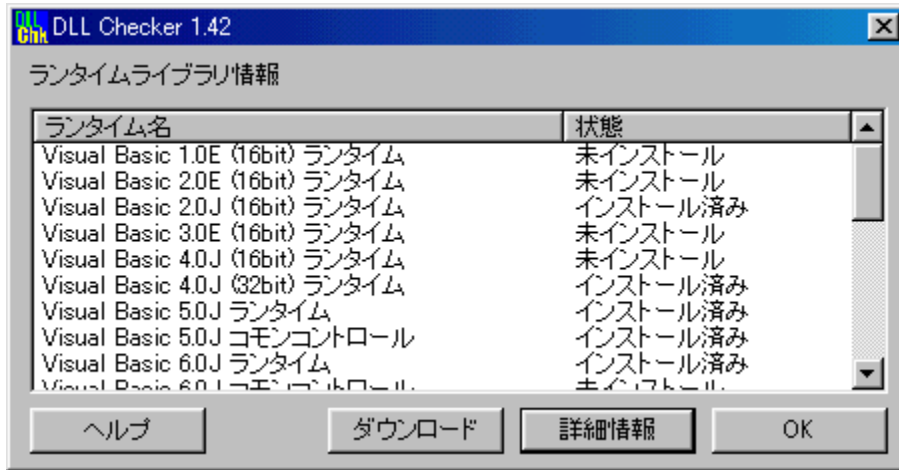


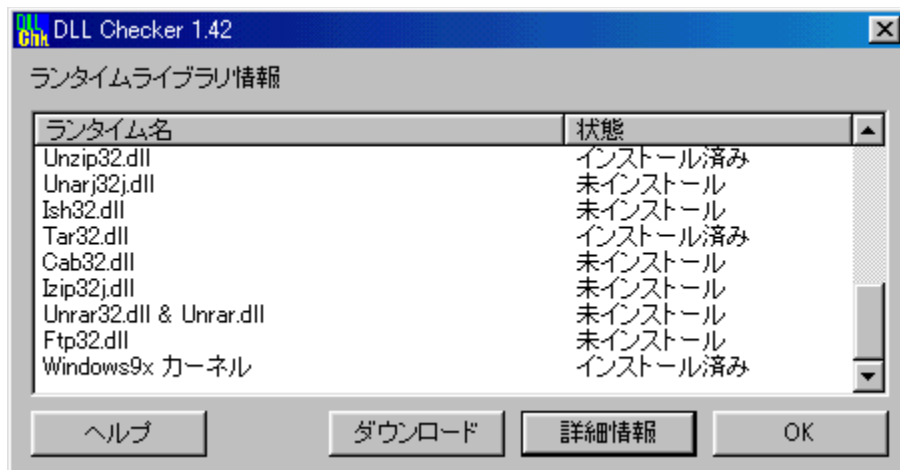
,è,È,ÿ,É□A^è—□o—í,ìCE<%oÊ,í,±,ñ,ÈŠ´,¶,Å,·□B

,,ü,-

DLL Checker,í□A□Y`èftf@fCf<,δ—p^Ó,·,é,±  
,Æ,Å□Af`fFfbfN,·,éDLL,δfjfXf^f}fCfY,·,é,±,Æ,ª,Å,«,Ü,·□B□Y`èftf@fCf<,δ—~—

p,μ,È,ç,ê,ê,ADLL Checker,í,A'Ê,í,ì~—p,É,Ú,μ,Ä, ,Ü,è•K—v,È,çf%of“f^fCf€  
 ,âfA[fjfCfoDLL,ì'¶Y,í'fFfbfN,μ,Ü,¹,ñ,²A,»,è,ç,íftf@fCf<,ì'¶Y,Ü,Äf`fFfbfN,μ,½  
 ,ç,Æ,ç,α•û,ì,½,β,ÉA,“,Ü,~,Æ,μ,ÄA□u,â,è,·,~•Ö□v,Æ-  
 ¼,Ä,~,½Y'èftf@fCf<,ð“~□«,μ,Ä,“,«,Ü,·BfA[fjfCfu,ì'†,ÉADllchkEx.ini,Æ,ç  
 ,æftf@fCf<,², ,è,Ü,·,l,ÄA,±,ê,ðDllchk.ini,ÉfSfí[f€,μ,ÄDLL Checker,ð<N“® ,μ,Ä,ç  
 ,½,¾,¼,«,Ü,·,ÆA^È%º,ì,æ,α,ÉA,β,Ü,μ,çf%of“f^fCf€  
 ,âDLL,ì'¶Y,Æfo[fWf†f“í•ñ,í'fFfbfN,ð,“,±,È,A,Ä,,ê,é,æ,α,É,È,è,Ü,·B





,Æ,ç,æ,í,¯,Å□ADLL Checker,ð,²Š^—p,,³/₄,³,ç□B



f`fFbfNCE<%oÊ□o—í—á

f`fFbfNCE<%oÊ□o—í—á

DLL Checker Version 1.42  
Copyright (C) 1999-2000 T. Funayama

[Visual Basic 4.0] f%of“f^fCf€]

Status : Not Installed  
Vb4jp32.dll  
Status : Not Installed  
Vb40032.dll  
Status : Not Installed

[Visual Basic 5.0] f%of“f^fCf€]

Status : Installed  
  
Msvbvm50.dll  
Path : C:\WIN98\SYSTEM\Msvbvm50.dll  
Version : 05.00.4319 (SP2)  
Vb5jp.dll  
Path : C:\WIN98\SYSTEM\Vb5jp.dll  
Version : 05.00.4319 (SP2)

[Visual Basic 6.0] f%of“f^fCf€]

Status : Not Installed  
Msvbvm60.dll  
Status : Not Installed  
Vb6jp.dll  
Status : Not Installed  
Oleaut32.dll  
Status : Installed  
Path : C:\WIN98\SYSTEM\Oleaut32.dll  
Version : 2.20.4122

[MFC 4.0 (Visual C++ 4.0)]

Status : Installed  
  
Mfc40.dll  
Path : C:\WIN98\SYSTEM\Mfc40.dll

Version : 4.1.6139  
Msvcrt40.dll  
Path : C:\WIN98\SYSTEM\Msvcrt40.dll  
Version : 4.10.6038  
Ctl3d32.dll  
Path : C:\WIN98\SYSTEM\Ctl3d32.dll  
Version : 2.31.000  
Olepro32.dll  
Path : C:\WIN98\SYSTEM\Olepro32.dll  
Version : 5.0.4122

[MFC 4.2 (Visual C++ 5.0 & 6.0) f%of"f^fCf€]

Status : Installed

Mfc42.dll  
Path : C:\WIN98\SYSTEM\Mfc42.dll  
Version : 4.21.7325  
Msvcrt.dll  
Path : C:\WIN98\SYSTEM\Msvcrt.dll  
Version : 5.00.7303

[C++ Builder 3.0 f%of"f^fCf€]

Status : Not Installed

Vcl35.bpl  
Status : Not Installed  
Vcl35.jpn  
Status : Not Installed  
Cp3240mt.dll  
Status : Not Installed  
BorIndmm.dll  
Status : Not Installed

[C++ Builder 4.0 f%of"f^fCf€]

Status : Not Installed

Vcl40.bpl  
Status : Not Installed  
Vcl40.jpn  
Status : Not Installed  
Vclx40.bpl  
Status : Not Installed  
Vclx40.jpn  
Status : Not Installed  
Cp3245mt.dll

Status : Not Installed  
BorIndmm.dll  
Status : Not Installed

[Unlha32.dll]

Status : Not Installed  
Unlha32.dll  
Status : Not Installed

[Unzip32.dll]

Status : Not Installed  
Unzip32.dll  
Status : Not Installed

%oü"Á—š—đ(,Ü,½,ì-¼,đŠJ""ú<L,Æ,à,ç,κ)

**1999.09.21 Version 0.90**

□E,Æ,è, ,l,,□AŠ@□-□B

**1999.09.22 Version 0.91**

□EBorland C++ Builder,ìf%of"f^fCf€,àŠm"F,Á,«,é,æ,κ,É,μ,½□BDelphi,à,â,ë,κ,ÆŽv,Á,½,ñ,¾,¯,Ç□Af%of"f^fCf€□□-DLL,ìî•ñ,<sup>a</sup>É,ç,ì,Á,í,©,ç,È,©,Á,½(^ ^;□B

**1999.09.22 Version 1.00**

□E"Á,É"i,μ,ç,±,Æ,đ,â,Á,Ä,ç,È,ç,ì,Å□AVersion  
1.00,É,μ,Äfwf<fv,đŠ@□-,<sup>3</sup>,<sup>1</sup>,½CEă,É□ACEöŠJ,·,é,±,Æ,É,·,é□B

**1999.11.05 Version 1.1**

□Ef`fFbfN,ìC<%oÉ,ì•Žì,đfŠfXfgfRf"f<sup>g</sup>f□□[f<,É•\Žì,·,é,æ,κ,É•ï□X,μ,½  
□E□Y'èftf@fCf<,đ"C□ž,ñ,Äf`fFbfN,<sup>a</sup>Á,«,é,æ,κ,É,È,Á,½  
□EExecute Link,<sup>a</sup>Á,«,é,æ,κ,É,È,Á,½

**1999.11.08 Version 1.15**

□Ef\_fEf"f□□[fhf{f^f",ì'Ç%oÁ,Æf\_fEf"f□□[fh<@"\,ìŽÀ'•  
□E"à"ff□f^,É,æ,éf`fFbfNf<□[f`f",ì%oü—Ç

**1999.11.12 Version 1.20**

□E•;□"DLLf`fFbfN,É,æ,éfCf"fXfg□[f<f`fFbfN,ìCμ-§%o»»,đŽÀ'•

**1999.11.16 Version 1.30**

□Ef%of"f^fCf€,ì□Ú□×□î•ñ,đ•\Žì,Á,«,é,æ,κ,É,È,Á,½  
□EfŠf\□[fX,ì,Ý,ìDLL,ìf`fFbfN,<sup>a</sup>κ,Ü,,ç,Á,Ä,ç,È,©,Á,½•s<î□‡,đ□C□<sup>3</sup>

**1999.11.17 Version 1.30a**

□EfŠfXfgfRf"f<sup>g</sup>f□□[f<,ìfj  
%of€•□,ì□‡CEv,<sup>a</sup>□A□cfXfNf□□[f<fo□[.,<sup>a</sup>□o,½,Æ,«,Á,à'S'ì,ì•□,Æ,«,ç,ñ,Æ^ê'v,·,é,æ,κ,É,μ,½  
□EUser"Á,ÆProgrammer"Á,Á,»,ê,¼,ê•s—v,È□^—  
□,đfRf"fpfCf<Žž,É□Ø,è•<sup>a</sup>,¯,é,æ,κ,É,μ,½

**1999.11.18 Version 1.31**

□E□Y'èftf@fCf<,©,çf`fFbfN,μ,½,Æ,«,É□A□î•ñfEfBf"f<sup>h</sup>fE,ìf^fCf<sup>g</sup>f<,□<sup>3</sup>,μ,•\Žì,<sup>3</sup>,ê,É,ç-â'è"\_,đ□C□<sup>3</sup>

**2000.01.21 Version 1.32**

□E16bit DLL,ì'¶□Ýf`fFbfN,<sup>a</sup>κ,Ü,,ç,Á,Ä,ç,È,©,Á,½-â'è,đ□C□<sup>3</sup>  
□E□,·-%o»»,ì,½,ßfo□[fWf‡f"f`fFbfNŽž,ÉDLL,ìf□□[fh,đ,"±,È,í,È,ç,æ,κ,É,μ,½  
□E□u,â,è,·,-•Ö□v□Y'èftf@fCf<,ì□C□<sup>3</sup>,đfCf"fNf<□[fh

**2000.01.21 Version 1.33**

□Eft□[fU□[,āŠÔ^á,Á,ÄfCf“fXfg□[f%□[,đ<N“® ,μ,È,ϕ,æ,α,É□AExecute  
LinkŽž,É□AŽw’èftf@fCf<,đfRfs□[ ,μ,Ä<N“® ,Á,« ,é,æ,α,É,È,Á,½(“ú-  
{Œê,¿,â,Á,Æ•î(^^);

**2000.03.02 Version 1.40**

□EfXfNf%ofbf` (CDIChkfNf%ofX)

**2000.03.03 Version 1.40 (‘±,«)**

□EfefXfg—pfRf}f“fhf%ofCf“”Á(dcc.exe),đfor Win32  
Console”Á,Æ,μ,ÄfŠfS□[fX,·,é,½,β,É□A,ϕ,ë,ϕ,ë,ÈfR□[fh,đ□’,«‘«,μ,½(fRf}f“fhf  
%ofCf“fifvfVf†f“%ođ□í,Æ,©□AfGf%□[f`fFbfN,Æ,©)

**2000.03.03 Version 1.40 (‘±,«)**

□Efor Win32 Console”Á,ì□x,©,ϕfofO,Æ,è  
□Efor Win32 Console”Á—pfwf<fv,ì□i□»

**2000.03.06 Version 1.40 (‘±,«)**

□EGUI”Á,ìf`fFbfNf<□[f`f“,đCDIChkfx□[fX,É□·,μ,©,;□B,±  
,è,Á□ADLLf`fFbfN,ÆVersion InfoŽæ“¾,āfR□[fh“à,ÉŽU,Á,Ä,ϕ,é□ó<μ,ā,æ,α,â,-  
%ođ□Á,³,ê,½(^^)  
□EUser”Á,ÉfefLfXfg□o—í<@“\,đŽÀ’•

**2000.03.07 Version 1.40 (‘±,«)**

□EProgrammer”Á,É•K—v,ÈDLL,āfCf“fXfg□[f<□ï,Ý,ì□ê#□ADLL  
Checker,ìf`fCfAf□fO,đ□o,³,È,ϕ“Silent Mode”,đŽÀ’•

**2000.03.28 Version 1.41**

□EŒÂ□X,ìftf@fCf<,ÉŠÖ,·,éfCf“fXfg□[f<f`fFbfN,ìŒμ-§%o»(CDIIfNf%ofX,ì•ï□X)  
□EUser”Á,ÆProgrammer”Á,ÄfŠf□[fX,đ□Ø,è•ā,¯,é,æ,α,É,μ,½  
□E□Ú□x fEfBf“fhfE,ÉDLLfZfbfg-¼,ā□o,È,,È,Á,Ä,ϕ,½-â’è,đ□C□³

**2000.05.22 Version 1.42**

□Evbrun100.dll,āf`fFbfN,Á,« ,È,ϕ-â’è,đ□C□³(f`fFbfN—áŠOŽw’è,đ”F,β,½,  
CDIChkfNf%ofX)

**2000.10.09 Version 1.42a**

□EWindows2000,ÄŒx□□f`fCfAf□fO,ā□o,È,ϕ-â’è,đ□C□³

**2000.12.27 Version 1.43**

□EBorland C++ Builder 5.0,ìf%of“f^fCf€,đf`fFbfN,·,é,æ,α,É,μ,½

'~ìCE "™

'~ìCE ,É,Â,ç,Ä

□@- {f\ftfgfEjFfA,ì'ñ<ÿ,í□A□uCE»□ó,ì,Ü,Ü(as is)□v,Æ,μ□A- {f\ftfgfEjFfA,É,æ,Á,Ä□¶,¶,κ  
,é□áŠQ“™,ÉŠÖ,μ,Ä□Afvf□fOf%of€□□-ŽÒ,í^è□Ø,ì□O”C,ð•%o,í,È,ç,±  
,Æ,Æ,μ,Ü,·□B,Ü,½□A- {f\ftfgfEjFfA,íftfŠ□[f\  
ftfgfEjFfA,Æ,μ,Ä”z•z,·,é,à,ì,Æ,μ,Ü,·□B- {f\  
ftfgfEjFfA,ì□Ä”z•z,É□Ü,μ,Ä□A□fA□[fjfcfu“à—e,ì%oü•ï,ð<ÖŽ~ ,μ,Ü,·□B

□@- {f\ftfgfEjFfA,í□AMicrosoft Visual C++ 4.0j / 5.0j (SP3),Å□ì□»,<sup>3</sup>,é,Ü,μ,½□B

□@- {f\ftfgfEjFfA,ðŽGŽ□□‘□Ð“™,Ö,ìžû~^,ð,“,±,È,κ□ê□‡,í□AŽ-‘O,É□ìžÒ,Ö,ì~A—  
□,ð,“,±,È,κ,à,ì,Æ,μ,Ü,·□B,Ü,½□AŽû~^,É□Ü,μ,Ä□ACE©- {Ž□“™,ð^è•”—•t,μ,Ä,ç  
,½,¾,~,é,Æ□A□;CEä,ì□ìžÒ,ìfvf□fOf%of€□□-ì—ã,Ý,Æ,È,é,ì,Å□A, ,è,<sup>a</sup>,½,ç  
,©,ÆŽv,ç,Ü,·□B,ç,·,è,É,μ,Ä,à□A-<sup>3</sup>f,Åžû~^, ,é,ç,í□Ð%oî“™,ð,“,±,È,κ,±  
,Æ,íCEμ<Ö,μ,Ü,·□B

□ìžÒ~A—□□æ

□@- {f\ftfgfEjFfA,ÉŠÖ,μ,Ä□ìžÒ,É~A—□,ð,“,±,È,κ□ê□‡,í□A

TBE02346@nifty.ne.jp (T. Funayama)

,Ü,Å,“Šè,ç,μ,Ü,·□B

□@DLL Checker,ðŠÜ,p□A□ìžÒ,ì,±,è,Ü,Å,É□ì□- ,μ,Ä,«,½f\“f%ofCf“f\  
ftfgfEjFfA,É,Å,ç,Ä□ASÈ’P,É□Ð%oî,<sup>3</sup>,<sup>1</sup>,Ä,ç,½,¾,fz□[f€fy□[fW,ðŠ]□Y,μ,Ä,ç  
,Ü,·□BCEä<»-ì, ,é,©,½,í^è“x,<sup>2</sup>—,¾,<sup>3</sup>,ç□B

,Ó^ó—Ç•ifz□[f€fy□[fW: <http://homepage1.nifty.com/funayama/>  
(@NIFTY,ì@homepage,É^Ü□s,μ,Ü,μ,½)

□@,Ü,½□A- {f\ftfgfEjFfA,ÉŠÖ,·,éŠ’z□E—v-]□EfofO□î•ñ,È,Ç,à, ,í,<sup>1</sup>,Ä•ñ□□,ç  
,½,¾,~,é,ì%oÄ\,É”íí,Å’í□^,μ,Ä,ç,«,½,ç,ÆŽv,Å,Ä,“,è,Ü,·□B

,¨,Ü,-

ŽèĀ³,É, ,éOS,ìffftfHf<fg□ó'Ô,Å,ìDLL,ì□ó<μ,δ,Ü,Æ,ß,Ä,Ý,Ü,μ,½□B,È,É,©,ìŽQ□I,É,  
Å,«,»,x,È,ç,î,²—~—p,,¾,¾,ç□BWindows95,àŽèĀ³,É,í, ,é,ì,Å,·,ª□A,Ü, □AŽg,x,±  
,Æ,à□Å<ß,Å,í□,È,,È,Á,Ä,«,½,ì,Å,ç,ç,©,Æ(□í)□B

'²,x,½,à,ì

Windows98

Windows98SE

WindowsMe

Windows2000

## ,,Ü,~(Windows98)

### Windows98

DLL Checker Version 1.40  
Copyright (C) 1999-2000 T. Funayama

[Visual Basic 1.0E (16bit) f%of"f^fCf€]

Status : Not Installed  
Vbrun100.dll  
Status : Not Installed

[Visual Basic 2.0E (16bit) f%of"f^fCf€]

Status : Not Installed  
Vbrun200.dll  
Status : Not Installed

[Visual Basic 2.0J (16bit) f%of"f^fCf€]

Status : Not Installed  
Vbrjp200.dll  
Status : Not Installed

[Visual Basic 3.0E (16bit) f%of"f^fCf€]

Status : Not Installed  
Vbrun300.dll  
Status : Not Installed

[Visual Basic 4.0J (16bit) f%of"f^fCf€]

Status : Not Installed  
Vb4jp16.dll  
Status : Not Installed  
Vb40016.dll  
Status : Not Installed

[Visual Basic 4.0J (32bit) f%of"f^fCf€]

Status : Not Installed  
Vb4Jp32.dll  
Status : Not Installed



Vb40032.dll  
Status : Not Installed

[Visual Basic 5.0] f%of“f^fCf€]

Status : Installed

Msvbvm50.dll  
Path : C:.dll  
Version : 05.00.4319 (SP2)  
Vb5jp.dll  
Path : C:jp.dll  
Version : 05.00.4319 (SP2)

[Visual Basic 5.0] fRf,f“fRf“fgf□□[f<]

Status : Not Installed

Comctl32.ocx  
Status : Installed  
Path : C:.ocx  
Version : 5.01.4319  
Comct232.ocx  
Status : Not Installed  
Cmctljp.dll  
Status : Not Installed  
Cmct2jp.dll  
Status : Not Installed

[Visual Basic 6.0] f%of“f^fCf€]

Status : Not Installed

Msvbvm60.dll  
Status : Not Installed  
Vb6jp.dll  
Status : Not Installed  
Oleaut32.dll  
Status : Installed  
Path : C:.dll  
Version : 2.20.4122

[Visual Basic 6.0] fRf,f“fRf“fgf□□[f<]

Status : Not Installed

Mscmctl.ocx  
Status : Not Installed  
Mscmct2.ocx

Status : Not Installed  
Comct332.ocx  
Status : Not Installed  
Mscmcjp.dll  
Status : Not Installed  
Msc2jp.dll  
Status : Not Installed  
Cmct3jp.dll  
Status : Not Installed

[,»,ì¼,ìRf“fgf□□[f<EQ]

Status : Not Installed  
Mci32.ocx  
Status : Not Installed  
Mcijp.dll  
Status : Not Installed  
Tabctl32.ocx  
Status : Not Installed  
Tabctjp.dll  
Status : Not Installed  
Richtx32.ocx  
Status : Not Installed  
Rchtxjp.dll  
Status : Not Installed  
Msinet.ocx  
Status : Not Installed  
Inetjp.dll  
Status : Not Installed  
Msmapi32.ocx  
Status : Not Installed  
Msmpijp.dll  
Status : Not Installed  
MsMask32.ocx  
Status : Not Installed  
Msmskjp.dll  
Status : Not Installed  
Mswinsck.ocx  
Status : Not Installed  
Winskjp.dll  
Status : Not Installed  
Comdlg32.ocx  
Status : Not Installed  
Cmdlgjp.dll  
Status : Not Installed  
Mscomm32.ocx

Status : Not Installed  
Mscomjdp.dll  
Status : Not Installed

[MFC 4.0 (Visual C++ 4.0) f%of"f^fCf€]

Status : Installed

MFC40.dll  
Path : C:.dll  
Version : 4.1.6139  
Msvcrt40.dll  
Path : C:.dll  
Version : 4.10.6038  
Ctl3d32.dll  
Path : C:d32.dll  
Version : 2.31.000  
Olepro32.dll  
Path : C:.dll  
Version : 5.0.4122

[MFC 4.2 (Visual C++ 5.0 & 6.0) f%of"f^fCf€]

Status : Installed

MFC42.dll  
Path : C:.dll  
Version : 4.21.7325  
Msvcrt.dll  
Path : C:.dll  
Version : 5.00.7128

[C++ Builder 3.0 f%of"f^fCf€]

Status : Not Installed

Vcl35.bpl  
Status : Not Installed  
VCL35.jpj  
Status : Not Installed  
Cp3240mt.dll  
Status : Not Installed  
BorIndmm.dll  
Status : Not Installed

[C++ Builder 4.0 f%of"f^fCf€]

Status : Not Installed

Vcl40.bpl

Status : Not Installed

Vcl40.jpn

Status : Not Installed

VCLx40.bpl

Status : Not Installed

Vclx40.jpn

Status : Not Installed

Cp3245mt.dll

Status : Not Installed

BorIndmm.dll

Status : Not Installed

[C++ Builder 5.0 f%of“f^fCf€]

Status : Not Installed

Vcl50.bpl

Status : Not Installed

Vcl50.jpn

Status : Not Installed

Vclx50.bpl

Status : Not Installed

Cc3250mt.dll

Status : Not Installed

BorIndmm.dll

Status : Not Installed

[Unlha32.dll]

Status : Not Installed

Unlha32.dll

Status : Not Installed

[Unzip32.dll]

Status : Not Installed

Unzip32.dll

Status : Not Installed

[Unarj32j.dll]

Status : Installed

Unarj32j.dll

Path : C:j.dll

Version : 0.25.0.2

[Ish32.dll]

Status : Not Installed  
Ish32.dll  
Status : Not Installed

[Tar32.dll]

Status : Not Installed  
Tar32.dll  
Status : Not Installed

[Cab32.dll]

Status : Not Installed  
Cab32.dll  
Status : Not Installed

[Izip32j.dll]

Status : Not Installed  
Izip32j.dll  
Status : Not Installed

[Unrar32.dll & Unrar.dll]

Status : Not Installed  
Unrar32.dll  
Status : Not Installed  
Unrar.dll  
Status : Installed  
Path : C:.dll  
Version :

[Ftp32.dll]

Status : Not Installed  
Ftp32.dll  
Status : Not Installed

[Windows9x f][f<]

Status : Installed

Kernel32.dll

Path : C:.dll  
Version : 4.10.1998  
User32.dll  
Path : C:.dll  
Version : 4.10.1998  
Shell32.dll  
Path : C:.dll  
Version : 4.72.3110.6

## ,,Ü,~(Windows98SE)

### Windows98SE

DLL Checker Version 1.40  
Copyright (C) 1999-2000 T. Funayama

[Visual Basic 1.0E (16bit) f%of"f^fCf€]

Status : Not Installed  
Vbrun100.dll  
Status : Not Installed

[Visual Basic 2.0E (16bit) f%of"f^fCf€]

Status : Not Installed  
Vbrun200.dll  
Status : Not Installed

[Visual Basic 2.0J (16bit) f%of"f^fCf€]

Status : Not Installed  
Vbrjp200.dll  
Status : Not Installed

[Visual Basic 3.0E (16bit) f%of"f^fCf€]

Status : Not Installed  
Vbrun300.dll  
Status : Not Installed

[Visual Basic 4.0J (16bit) f%of"f^fCf€]

Status : Not Installed  
Vb4jp16.dll  
Status : Not Installed  
Vb40016.dll  
Status : Not Installed

[Visual Basic 4.0J (32bit) f%of"f^fCf€]

Status : Not Installed  
Vb4Jp32.dll  
Status : Not Installed

Vb40032.dll  
Status : Not Installed

[Visual Basic 5.0] f%of“f^fCf€]

Status : Installed

Msvbvm50.dll  
Path : C:.dll  
Version : 05.00.4319 (SP2)  
Vb5jp.dll  
Path : C:jp.dll  
Version : 05.00.4319 (SP2)

[Visual Basic 5.0] fRf,f“fRf“fgf□□[f<]

Status : Not Installed  
Comctl32.ocx  
Status : Not Installed  
Comct232.ocx  
Status : Not Installed  
Cmctljp.dll  
Status : Not Installed  
Cmct2jp.dll  
Status : Not Installed

[Visual Basic 6.0] f%of“f^fCf€]

Status : Installed

Msvbvm60.dll  
Path : C:.dll  
Version : 6.00.8495  
Vb6jp.dll  
Path : C:jp.dll  
Version : 6.00.8169  
Oleaut32.dll  
Path : C:.dll  
Version : 2.40.4277

[Visual Basic 6.0] fRf,f“fRf“fgf□□[f<]

Status : Not Installed  
Mscmctl.ocx  
Status : Installed  
Path : C:.ocx



Version : 6.00.8498  
Mscmct2.ocx  
Status : Installed  
Path : C:.ocx  
Version : 6.00.8418  
Comct332.ocx  
Status : Not Installed  
Mscmcjp.dll  
Status : Installed  
Path : C:.dll  
Version : 6.00.8163  
Msc2jp.dll  
Status : Installed  
Path : C:jp.dll  
Version : 6.00.8163  
Cmct3jp.dll  
Status : Not Installed

[,»,ì¼,ìRf“fgf□□[f<ÆQ]

Status : Not Installed  
Mci32.ocx  
Status : Not Installed  
Mcijp.dll  
Status : Not Installed  
Tabctl32.ocx  
Status : Not Installed  
Tabctjp.dll  
Status : Not Installed  
Richtx32.ocx  
Status : Installed  
Path : C:.ocx  
Version : 6.00.8169  
Rchtxjp.dll  
Status : Not Installed  
Msinet.ocx  
Status : Not Installed  
Inetjp.dll  
Status : Not Installed  
Msmapi32.ocx  
Status : Installed  
Path : C:.ocx  
Version : 6.00.8169  
Msmpijp.dll  
Status : Installed  
Path : C:.dll

Version : 6.00.8163  
MsMask32.ocx  
Status : Installed  
Path : C:.ocx  
Version : 6.00.8169  
Msmskjp.dll  
Status : Not Installed  
Mswinsck.ocx  
Status : Not Installed  
Winskjp.dll  
Status : Not Installed  
Comdlg32.ocx  
Status : Not Installed  
Cmdlgjp.dll  
Status : Not Installed  
Mscomm32.ocx  
Status : Not Installed  
Mscomjp.dll  
Status : Not Installed

[MFC 4.0 (Visual C++ 4.0) f%of“f^fCf€]

Status : Installed

MFC40.dll  
Path : C:.dll  
Version : 4.1.6140  
Msvcrt40.dll  
Path : C:.dll  
Version : 4.22.0000  
Ctl3d32.dll  
Path : C:d32.dll  
Version : 2.31.000  
Olepro32.dll  
Path : C:.dll  
Version : 5.0.4277

[MFC 4.2 (Visual C++ 5.0 & 6.0) f%of“f^fCf€]

Status : Installed

MFC42.dll  
Path : C:.dll  
Version : 6.00.8447.0  
Msvcrt.dll  
Path : C:.dll

Version : 6.00.8397.0

[C++ Builder 3.0 f%of“f^fCf€]

Status : Not Installed

Vcl35.bpl

Status : Not Installed

VCL35.jpj

Status : Not Installed

Cp3240mt.dll

Status : Not Installed

BorIndmm.dll

Status : Not Installed

[C++ Builder 4.0 f%of“f^fCf€]

Status : Not Installed

Vcl40.bpl

Status : Not Installed

Vcl40.jpj

Status : Not Installed

VCLx40.bpl

Status : Not Installed

Vclx40.jpj

Status : Not Installed

Cp3245mt.dll

Status : Not Installed

BorIndmm.dll

Status : Not Installed

[C++ Builder 5.0 f%of“f^fCf€]

Status : Not Installed

Vcl50.bpl

Status : Not Installed

Vcl50.jpj

Status : Not Installed

Vclx50.bpl

Status : Not Installed

Cc3250mt.dll

Status : Not Installed

BorIndmm.dll

Status : Not Installed

[Unlha32.dll]

Status : Not Installed  
Unlha32.dll  
Status : Not Installed

[Unzip32.dll]

Status : Not Installed  
Unzip32.dll  
Status : Not Installed

[Unarj32j.dll]

Status : Not Installed  
Unarj32j.dll  
Status : Not Installed

[Ish32.dll]

Status : Not Installed  
Ish32.dll  
Status : Not Installed

[Tar32.dll]

Status : Not Installed  
Tar32.dll  
Status : Not Installed

[Cab32.dll]

Status : Not Installed  
Cab32.dll  
Status : Not Installed

[Izip32j.dll]

Status : Not Installed  
Izip32j.dll  
Status : Not Installed

[Unrar32.dll & Unrar.dll]

Status : Not Installed  
Unrar32.dll  
Status : Not Installed  
Unrar.dll

Status : Not Installed

[Ftp32.dll]

Status : Not Installed

Ftp32.dll

Status : Not Installed

[Windows9x fj][f!f<]

Status : Installed

Kernel32.dll

Path : C:.dll

Version : 4.10.2222

User32.dll

Path : C:.dll

Version : 4.10.2222

Shell32.dll

Path : C:.dll

Version : 4.72.3612.1700

## ,,Ü,~(WindowsMe)

### WindowsMe

DLL Checker Version 1.40  
Copyright (C) 1999-2000 T. Funayama

[Visual Basic 1.0E (16bit) f%of"f^fCf€]

Status : Not Installed  
Vbrun100.dll  
Status : Not Installed

[Visual Basic 2.0E (16bit) f%of"f^fCf€]

Status : Not Installed  
Vbrun200.dll  
Status : Not Installed

[Visual Basic 2.0J (16bit) f%of"f^fCf€]

Status : Not Installed  
Vbrjp200.dll  
Status : Not Installed

[Visual Basic 3.0E (16bit) f%of"f^fCf€]

Status : Not Installed  
Vbrun300.dll  
Status : Not Installed

[Visual Basic 4.0J (16bit) f%of"f^fCf€]

Status : Not Installed  
Vb4jp16.dll  
Status : Not Installed  
Vb40016.dll  
Status : Not Installed

[Visual Basic 4.0J (32bit) f%of"f^fCf€]

Status : Not Installed  
Vb4Jp32.dll  
Status : Not Installed

Vb40032.dll  
Status : Not Installed

[Visual Basic 5.0] f%of“f^fCf€]

Status : Installed

Msvbvm50.dll  
Path : C:.dll  
Version : 05.00.4319 (SP2)  
Vb5jp.dll  
Path : C:jp.dll  
Version : 05.00.4319 (SP2)

[Visual Basic 5.0] fRf,f“fRf“fgf□□[f<]

Status : Not Installed  
Comctl32.ocx  
Status : Not Installed  
Comct232.ocx  
Status : Not Installed  
Cmctljp.dll  
Status : Not Installed  
Cmct2jp.dll  
Status : Not Installed

[Visual Basic 6.0] f%of“f^fCf€]

Status : Not Installed  
Msvbvm60.dll  
Status : Installed  
Path : C:.dll  
Version : 6.00.8495  
Vb6jp.dll  
Status : Not Installed  
Oleaut32.dll  
Status : Installed  
Path : C:.dll  
Version : 2.40.4515

[Visual Basic 6.0] fRf,f“fRf“fgf□□[f<]

Status : Not Installed  
Mscmctl.ocx  
Status : Not Installed  
Mscmct2.ocx

Status : Not Installed  
Comct332.ocx  
Status : Not Installed  
Mscmcjp.dll  
Status : Not Installed  
Msc2jp.dll  
Status : Not Installed  
Cmct3jp.dll  
Status : Not Installed

[,»,ì¼,ìRf“fgf□□[f<EQ]

Status : Not Installed  
Mci32.ocx  
Status : Not Installed  
Mcijp.dll  
Status : Not Installed  
Tabctl32.ocx  
Status : Not Installed  
Tabctjp.dll  
Status : Not Installed  
Richtx32.ocx  
Status : Not Installed  
Rchtxjp.dll  
Status : Not Installed  
Msinet.ocx  
Status : Not Installed  
Inetjp.dll  
Status : Not Installed  
Msmapi32.ocx  
Status : Not Installed  
Msmpijp.dll  
Status : Not Installed  
MsMask32.ocx  
Status : Not Installed  
Msmskjp.dll  
Status : Not Installed  
Mswinsck.ocx  
Status : Not Installed  
Winskjp.dll  
Status : Not Installed  
Comdlg32.ocx  
Status : Not Installed  
Cmdlgjp.dll  
Status : Not Installed  
Mscomm32.ocx



Status : Not Installed  
Mscmjpg.dll  
Status : Not Installed

[MFC 4.0 (Visual C++ 4.0) f%of"f^fCf€]

Status : Installed

MFC40.dll  
Path : C:.dll  
Version : 4.1.6140  
Msvcrt40.dll  
Path : C:.dll  
Version : 4.22.0000  
Ctl3d32.dll  
Path : C:d32.dll  
Version : 2.31.000  
Olepro32.dll  
Path : C:.dll  
Version : 5.0.4515

[MFC 4.2 (Visual C++ 5.0 & 6.0) f%of"f^fCf€]

Status : Installed

MFC42.dll  
Path : C:.dll  
Version : 6.00.8665.0  
Msvcrt.dll  
Path : C:.dll  
Version : 6.10.8637.0

[C++ Builder 3.0 f%of"f^fCf€]

Status : Not Installed

Vcl35.bpl  
Status : Not Installed  
VCL35.jpj  
Status : Not Installed  
Cp3240mt.dll  
Status : Not Installed  
BorIndmm.dll  
Status : Not Installed

[C++ Builder 4.0 f%of"f^fCf€]

Status : Not Installed

Vcl40.bpl

Status : Not Installed

Vcl40.jpn

Status : Not Installed

VCLx40.bpl

Status : Not Installed

Vclx40.jpn

Status : Not Installed

Cp3245mt.dll

Status : Not Installed

BorIndmm.dll

Status : Not Installed

[C++ Builder 5.0 f%of“f^fCf€]

Status : Not Installed

Vcl50.bpl

Status : Not Installed

Vcl50.jpn

Status : Not Installed

Vclx50.bpl

Status : Not Installed

Cc3250mt.dll

Status : Not Installed

BorIndmm.dll

Status : Not Installed

[Unlha32.dll]

Status : Installed

Unlha32.dll

Path : C:.dll

Version : 1.42.0.4

[Unzip32.dll]

Status : Not Installed

Unzip32.dll

Status : Not Installed

[Unarj32j.dll]

Status : Installed

Unarj32j.dll  
Path : C:j.dll  
Version : 0.25.0.2

[Ish32.dll]

Status : Not Installed  
Ish32.dll  
Status : Not Installed

[Tar32.dll]

Status : Not Installed  
Tar32.dll  
Status : Not Installed

[Cab32.dll]

Status : Not Installed  
Cab32.dll  
Status : Not Installed

[Izip32j.dll]

Status : Not Installed  
Izip32j.dll  
Status : Not Installed

[Unrar32.dll & Unrar.dll]

Status : Not Installed  
Unrar32.dll  
Status : Not Installed  
Unrar.dll  
Status : Installed  
Path : C:.dll  
Version :

[Ftp32.dll]

Status : Not Installed  
Ftp32.dll  
Status : Not Installed

[Windows9x fj][f|f<]

Status : Installed

Kernel32.dll

Path : C:.dll

Version : 4.90.3000

User32.dll

Path : C:.dll

Version : 4.90.3000

Shell32.dll

Path : C:.dll

Version : 5.50.4134.100

## ,,,Ü,~(Windows2000)

### Windows2000

DLL Checker Version 1.40  
Copyright (C) 1999-2000 T. Funayama

[Visual Basic 1.0E (16bit) f%of"f^fCf€]

Status : Not Installed  
Vbrun100.dll  
Status : Not Installed

[Visual Basic 2.0E (16bit) f%of"f^fCf€]

Status : Not Installed  
Vbrun200.dll  
Status : Not Installed

[Visual Basic 2.0J (16bit) f%of"f^fCf€]

Status : Not Installed  
Vbrjp200.dll  
Status : Not Installed

[Visual Basic 3.0E (16bit) f%of"f^fCf€]

Status : Not Installed  
Vbrun300.dll  
Status : Not Installed

[Visual Basic 4.0J (16bit) f%of"f^fCf€]

Status : Not Installed  
Vb4jp16.dll  
Status : Not Installed  
Vb40016.dll  
Status : Not Installed

[Visual Basic 4.0J (32bit) f%of"f^fCf€]

Status : Not Installed  
Vb4Jp32.dll  
Status : Not Installed

Vb40032.dll  
Status : Not Installed

[Visual Basic 5.0] f%of“f^fCf€]

Status : Not Installed  
Msvbvm50.dll  
Status : Installed  
Path : E:.dll  
Version : 05.02.8244 (SP2)  
Vb5jp.dll  
Status : Not Installed

[Visual Basic 5.0] fRf,f“fRf“fgf□□[f<]

Status : Not Installed  
Comctl32.ocx  
Status : Not Installed  
Comct232.ocx  
Status : Not Installed  
Cmctljp.dll  
Status : Not Installed  
Cmct2jp.dll  
Status : Not Installed

[Visual Basic 6.0] f%of“f^fCf€]

Status : Not Installed  
Msvbvm60.dll  
Status : Installed  
Path : E:.dll  
Version : 6.00.8495  
Vb6jp.dll  
Status : Not Installed  
Oleaut32.dll  
Status : Installed  
Path : E:.dll  
Version : 2.40.4512

[Visual Basic 6.0] fRf,f“fRf“fgf□□[f<]

Status : Not Installed  
Mscmctl.ocx  
Status : Not Installed  
Mscmct2.ocx  
Status : Not Installed

Comct332.ocx  
Status : Not Installed  
Mscmcjp.dll  
Status : Not Installed  
Msc2jp.dll  
Status : Not Installed  
Cmct3jp.dll  
Status : Not Installed

[,»,ì¼,ìRf“fgf□□[f<ÆQ]

Status : Not Installed  
Mci32.ocx  
Status : Not Installed  
Mcijp.dll  
Status : Not Installed  
Tabctl32.ocx  
Status : Not Installed  
Tabctjp.dll  
Status : Not Installed  
Richtx32.ocx  
Status : Not Installed  
Rchtxjp.dll  
Status : Not Installed  
Msinet.ocx  
Status : Not Installed  
Inetjp.dll  
Status : Not Installed  
Msmapi32.ocx  
Status : Not Installed  
Msmpijp.dll  
Status : Not Installed  
MsMask32.ocx  
Status : Not Installed  
Msmskjp.dll  
Status : Not Installed  
Mswinsck.ocx  
Status : Not Installed  
Winskjp.dll  
Status : Not Installed  
Comdlg32.ocx  
Status : Not Installed  
Cmdlgjp.dll  
Status : Not Installed  
Mscomm32.ocx  
Status : Not Installed

Mskomjp.dll  
Status : Not Installed

[MFC 4.0 (Visual C++ 4.0) f%of"f^fCf€]

Status : Installed

MFC40.dll  
Path : E:.dll  
Version : 4.1.6140  
Msvcrt40.dll  
Path : E:.dll  
Version : 4.20 - OS use only. DO NOT DISTRIBUTE  
Ctl3d32.dll  
Path : E:d32.dll  
Version : 2.31.000  
Olepro32.dll  
Path : E:.dll  
Version : 5.0.4512

[MFC 4.2 (Visual C++ 5.0 & 6.0) f%of"f^fCf€]

Status : Installed

MFC42.dll  
Path : E:.dll  
Version : 6.00.8665.0  
Msvcrt.dll  
Path : E:.dll  
Version : 6.10.8637.0

[C++ Builder 3.0 f%of"f^fCf€]

Status : Not Installed  
Vcl35.bpl  
Status : Not Installed  
VCL35.jpj  
Status : Not Installed  
Cp3240mt.dll  
Status : Not Installed  
BorIndmm.dll  
Status : Installed  
Path : C:~1~1.dll  
Version : 5.0.12.34

[C++ Builder 4.0 f%of"f^fCf€]



Status : Not Installed

Vcl40.bpl

Status : Not Installed

Vcl40.jpn

Status : Not Installed

VCLx40.bpl

Status : Not Installed

Vclx40.jpn

Status : Not Installed

Cp3245mt.dll

Status : Not Installed

BorIndmm.dll

Status : Installed

Path : C:\~1\1.dll

Version : 5.0.12.34

[C++ Builder 5.0 f%of“f^fCf€]

Status : Not Installed

Vcl50.bpl

Status : Not Installed

Vcl50.jpn

Status : Not Installed

Vclx50.bpl

Status : Not Installed

Cc3250mt.dll

Status : Not Installed

BorIndmm.dll

Status : Not Installed

[Unlha32.dll]

Status : Not Installed

Unlha32.dll

Status : Not Installed

[Unzip32.dll]

Status : Not Installed

Unzip32.dll

Status : Not Installed

[Unarj32j.dll]

Status : Not Installed

Unarj32j.dll  
Status : Not Installed

[Ish32.dll]

Status : Not Installed  
Ish32.dll  
Status : Not Installed

[Tar32.dll]

Status : Not Installed  
Tar32.dll  
Status : Not Installed

[Cab32.dll]

Status : Not Installed  
Cab32.dll  
Status : Not Installed

[Izip32j.dll]

Status : Not Installed  
Izip32j.dll  
Status : Not Installed

[Unrar32.dll & Unrar.dll]

Status : Not Installed  
Unrar32.dll  
Status : Not Installed  
Unrar.dll  
Status : Not Installed

[Ftp32.dll]

Status : Not Installed  
Ftp32.dll  
Status : Not Installed

[Windows9x f] [f] <]

Status : Installed

Kernel32.dll

Path : E:.dll  
Version : 5.00.2191.1  
User32.dll  
Path : E:.dll  
Version : 5.00.2180.1  
Shell32.dll  
Path : E:.dll  
Version : 5.00.2920.0000



