



matrox **Parhelia**[™]

High Fidelity Graphics[™]

Basic Connection Setup

Configuration de base de la connexion

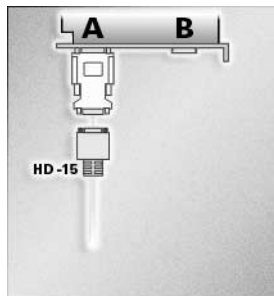
Basis-Verbindungssetup

Impostazione di base dei collegamenti

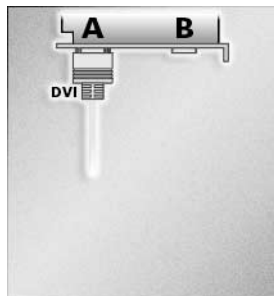
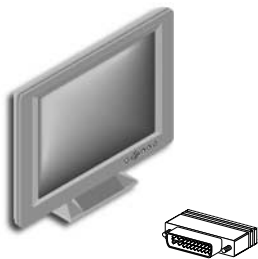
Configuración básica de la conexión


10818-G50-0200
/PAR-BKT20I

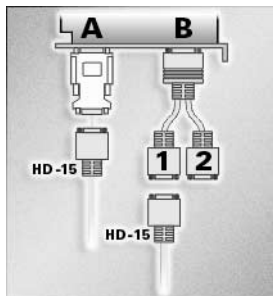
HD-15 ()



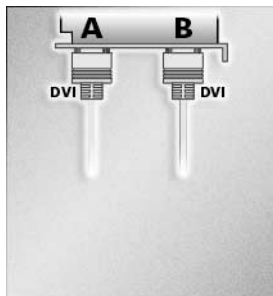
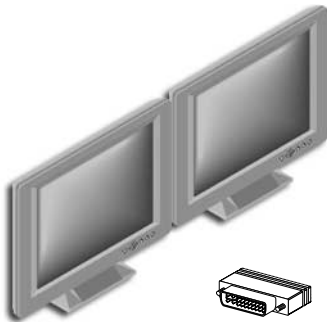
DVI ()





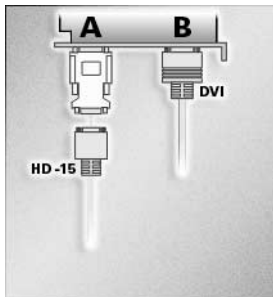
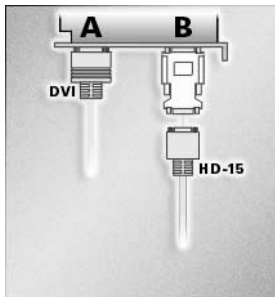
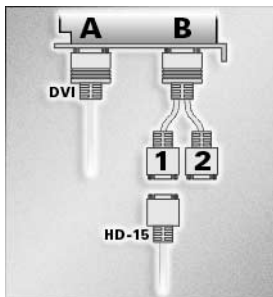
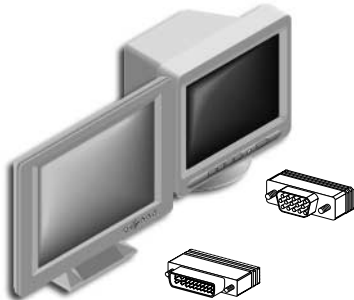
2 x HD-15 ()



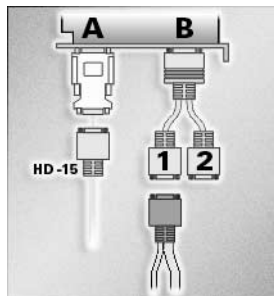
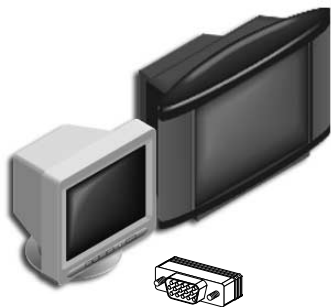
2 x DVI ()



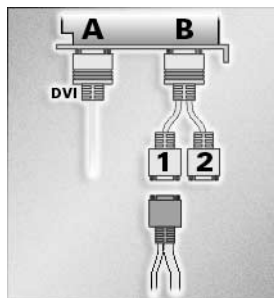
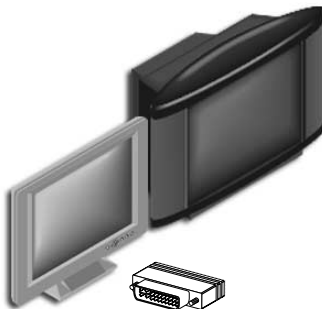
DVI () + HD-15 ()




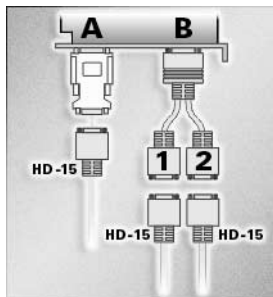
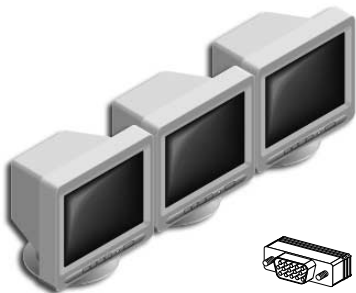
HD-15 () + TV



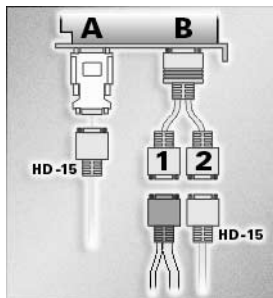
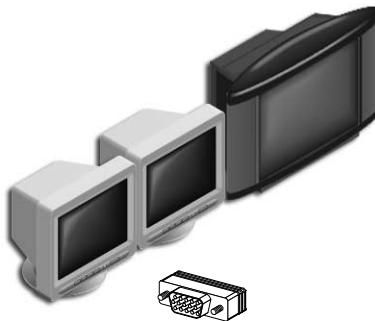
DVI () + TV





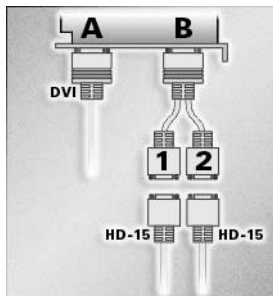
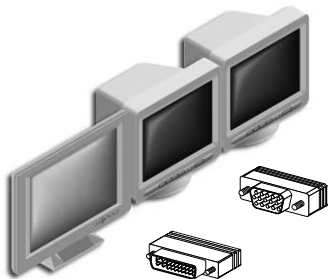
3 × HD-15 ()



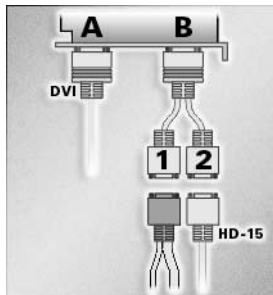
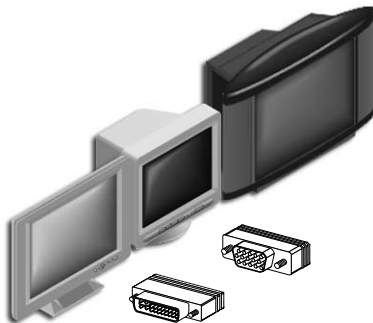
2 × HD-15 () + TV



DVI () + 2 × HD-15 ()



DVI () + HD-15 () + TV



- For more information, see “Connection setup” in your Matrox Parhelia *User Guide*.
- Pour plus d’informations, voir “Configuration de la connexion” dans votre *Guide d’utilisation* de Matrox Parhelia.
- Weitere Informationen finden Sie unter “Verbindungssetup” in Ihrem Matrox Parhelia *Benutzerhandbuch*.
- Per ulteriori informazioni, vedere “Impostazione dei collegamenti” nella *Guida utente* di Matrox Parhelia.
- Para obtener más información, consulte “Configuración de la conexión” en la *Guía del Usuario* de Matrox Parhelia.