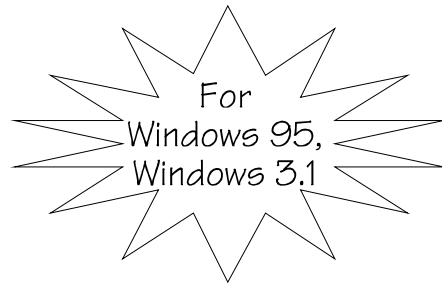


User's Guide

QUICK RESTART™

Version 2.0



(Non-Network Version)



TABLE OF CONTENTS

1) WHAT IS QUICK RESTART 2.0	3
2) INSTALLING QUICK RESTART 2.0	3
3) OPERATING QUICK RESTART.....	4
4) UNINSTALLING QUICK RESTART	6
5) TECHNICAL NOTES	7
A) INSTALLATION OF QUICK RESTART	7
B) QUICK RESTART ENABLING AND RESTORATION	8
6) ENJOY USING QUICK RESTART !	9

Acknowledgements:

Quick Restart is a trademark of PowerPro Software, Inc.

Quick Restart Software - (c) 1992-96 PowerPro Software, Inc.

Windows and the Windows logo are trademarks and Microsoft and MSDOS are registered trademarks of Microsoft Corp. All other products mentioned herein are the copyrights, trademarks or registered trademarks of their respective owners.

QUICK RESTART 2.0

1) WHAT IS QUICK RESTART 2.0 ?:

Quick Restart 2.0 is provides a high powered and essential productivity function for users of Windows-95 (or Windows 3.1 and above). The important function of Quick Restart is to allow the user to quickly shut-down and restart his or her work at the click of a mouse button or by using a hotkey, without having to bother about closing applications and saving files and reopening them later. It allows the user to get into their Windows work environment very quickly and conveniently each time they power up the system. There is no more need to close DOS sessions and close all open files or save the changes before you want to shut-down the system each time. (Please note that Quick Restart 2.0 will not work in a DOS session outside of Windows 3.x or Windows 95. If you need Quick Restart for DOS only applications then you must use Quick Restart for Windows & DOS version 1.5 or earlier).

Quick Restart also provides - Quick ViewChanger, Round-Robin resolution switching with ScrollLock key functions. Quick View Changer, allows you to quickly change resolutions on the fly. This function works with Windows 95 only. You can change the screen resolution to one of a number of allowable resolutions that is shown when you click on the "Quick View Changer icon". You can also use the "Scroll Lock" key to do a round robin resolution switching of the display. This allows you to just stay in your application and when you press the "Scroll Lock" key, the display jumps to the next allowable screen resolution automatically. Your keyboard and mouse pointer all remain wherever they were before. This is the easiest way to switch your resolution !. (For the scroll lock key to work, it must be enabled in your Quick Restart settings).

The above is just a brief description of various functions of Quick Restart. Additionally you can password protect your system after a restore operation and set up various advanced options using the Quick Restart settings dialog box.

2) INSTALLING QUICK RESTART 2.0

QUICK INSTALLATION STEPS:

Please close all other programs before beginning Quick Restart installation process, as the system and Windows will be restarted during Quick Restart installation process.

- 1) Insert QUICK RESTART 2.0 Setup diskette into floppy drive A or B and run "SETUP" program from this diskette from within Windows.
- 2) A) Click on "CONTINUE" on the Welcome Screen.
B) Click on "CONTINUE" on the Name Registration Screen.
- 3) Choose "INSTALL" option on the Custom Installation Screen.
If you desire you can choose "SET LOCATION" to change the default installation path from "C:\QRESTART" to another path say "D:\QRESTART".

PLEASE MAKE SURE WHATEVER DIRECTORY YOU INSTALL QUICK RESTART INTO IS A SEPARATE AND NEW DIRECTORY FOR QUICK RESTART ALONE. IT IS IMPORTANT THAT YOU DO NOT INSTALL OR COPY OTHER PROGRAMS INTO THE QUICK RESTART DIRECTORY, AS THE ENTIRE CONTENTS OF THIS DIRECTORY WILL BE DELETED DURING UNINSTALLATION OF QUICK RESTART.

The installation program will now start decompressing and installing program files from the floppy diskette onto the specified installation directory. Windows program group will be created and you will now be prompted to remove the floppy from drive and click on "Complete Installation".

4) Remove floppy diskette from drive when prompted , and click on "Complete Installation".

5) The system will now be rebooted.. If this does not happen automatically, probably you have some programs still open in Windows. Please close them and reboot system if necessary.

6) When the system reboots, automatic configuration of Quick Restart will take place. During this process an image file for Quick Restart will be created and the QRESTART.SYS driver will be added to your system's config.sys and QRCONT.EXE program if necessary will be added to the autoexec.bat.

If there is insufficient disk space available for creating image file at this point, an error message will be flashed. Further detailed error message will be shown when Windows restarts.

7) Once the configuration is completed successfully, your system will again be automatically rebooted. Once it is rebooted, the system will automatically go into Windows in case of Windows-95 or in Windows 3.1 when "win" entry is present in autoexec.bat. (Otherwise you may have to manually load Windows).

8) After a successful installation, Quick Restart toolbar will automatically show up. As you move the mouse over the various buttons, you will see a label popup that specifies the functionality of that command button. Quick Restart will be initially set up with the default hotkey of SHIFT and BACKSPACE keys pressed together. You can later change the hotkey from Settings. In Windows 95, the toolbar will be minimized to a tray icon by default on startup. You may double click on the tray icon for Quick Restart to bring this toolbar up on the screen. Again, minimizing it will remove it from the screen and send it back to the Windows 95 desktop tray.

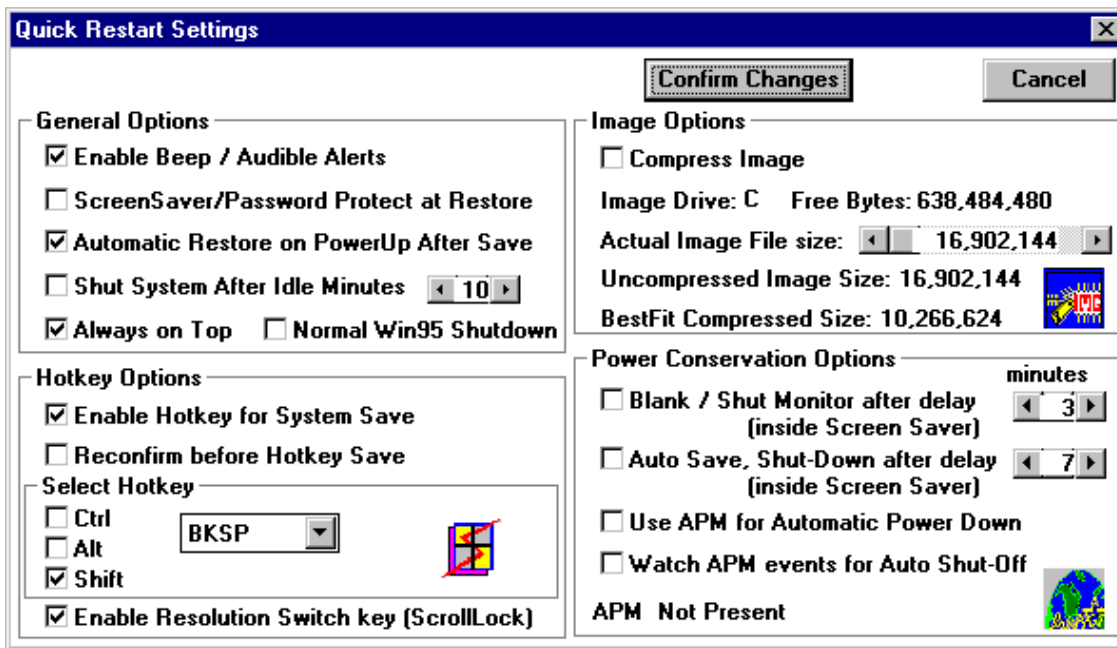


3) OPERATING QUICK RESTART:

The following are the various buttons on the Quick Restart button bar.

a) SETUP/SETTINGS

The setup options are logically divided into "General Options", "Hotkey Options", "Image Options" and "Power Conservation Options".



You may tab through various settings available in the Quick Restart settings dialog box. Press F1 for a context sensitive help on each topic that is of interest to you.

By default, the installation process will set up Quick Restart to intercept the Shutdown button on the Windows 95 Start menu and display the Quick Restart shutdown dialog box instead. However, you may disable this to do a normal Windows shutdown by selecting this "Normal Windows 95 Shutdown" option in the Settings dialog box.

b) QUICK SHUT-DOWN

Clicking on this button will initiate a Quick Restart system shut-down / save operation. A reconfirmation dialog will be presented before actual shut-down begins.

Alternatively, the shut-down may be effected by using the hotkey defined in the settings (the default is SHIFT and BackSpace keys pressed together).

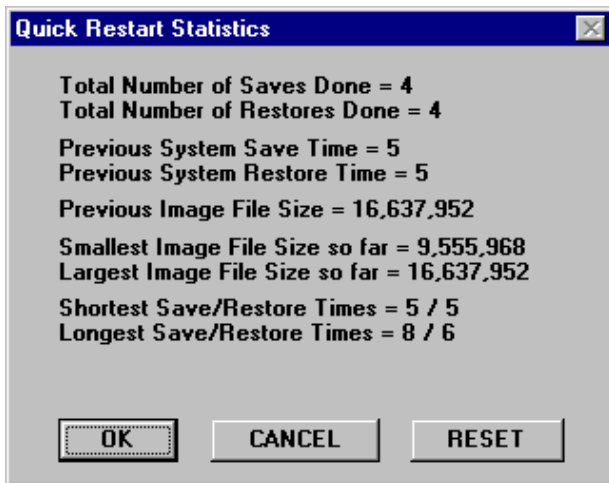
c) QUICK VIEW CHANGER

This will provide you a popup menu of resolutions to switch to. Choose the one you want to switch to. Some resolutions may require a restart of Windows. The implementation of this function is entirely done using the services provided by the underlying video drivers installed under Windows 95. (Any problems with your specific video card or drivers or video configuration while switching screen resolutions should be addressed to your Video subsystem provider).

You can alternatively use the Scroll lock key to do a round robin switching of resolutions. The scroll lock key must be enabled in the Quick Restart settings.

d) QUICK RESTART STATISTICS

Clicking on this Button will provide you with statistics on the operation of Quick Restart.

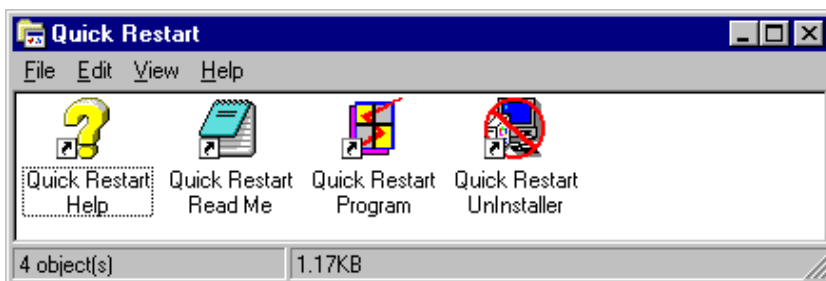


The statistics reported include, number of saves, number of restores, last save time, last restore time in seconds, previous image file size, largest/smallest image file sizes so far and shortest and longest save/restore time so far. These statistics are useful in tailoring a proper image file size for your system especially when using compression and are also useful as a matter of performance information.

4) UNINSTALLING QUICK RESTART

Please use only the uninstall utility that comes with Quick Restart to uninstall Quick Restart. Using any other general purpose Windows uninstaller will not do the job other than leaving some stray files around that will confuse Quick Restart configuration.

You can uninstall Quick Restart in Windows 95 from the "Add/Remove Programs" applet of Windows 95 control panel. Also you may uninstall Quick Restart easily by clicking on the "Quick Restart Uninstaller" icon in the Quick Restart Program Group or program. Please locate the Quick Restart uninstall icon shown by the striked red round circle and click on it. You will be asked to reconfirm if you really want to completely remove Quick Restart. The Quick Restart uninstaller will completely delete all Quick Restart installation files on your hard disk and make necessary changes to the startup files to completely remove Quick Restart.



Uninstalling Quick Restart specifically deletes the following files:

- C:\QRESTART.PTR - Quick Restart information file
- QRESTART.CFG - Quick Restart configuration file (location varies)

- QRESTART.IMG - Quick Restart image file (location varies)
- QRESTART - All contents of Quick Restart installation directory

It also removes the following entries in system files:

- QRESTART.SYS in config.sys
- QRCONT.EXE in autoexec.bat or config.sys
- QUICKWIN.EXE from win.ini.

It also removes all changes done to the System Registry.

5) TECHNICAL NOTES

This section describes technical details of Quick Restart Installation and Configuration.

All installation and configuration of Quick Restart is designed to be simple and easy with the ease of use of a general PC user in mind. Other than following installation and operation instructions and uninstallation instructions, the general user does not have to do anything more. Please remember not to delete the QRESTART installation directory or change the entries made to system files for Quick Restart and never delete any of the hidden system files created by Quick Restart which have the names QRESTART.PTR, QRESTART.CFG and QRESTART.IMG.

This section is written with the technically inclined in mind and can be safely skipped by those who are not determined to understand all the technicalities or have their installation and configuration of Quick Restart properly working already.

A) INSTALLATION OF QUICK RESTART

The following entries are made by Quick Restart in system configuration files:

- QRESTART.SYS in config.sys. Appears similar to:

```
DEVICE=C:\QRESTART\QRESTART.SYS
      OR
DEVICE=C:\QRESTART\QRESTART.SYS /DELAY /CFG:C /IMG:H
```

In some system configurations, /DELAY parameter may be required to delay the previous state restoration of the system until the QRCONT.EXE driver is run in either autoexec.bat or config.sys. The QRCONT.EXE may either be inserted as a device driver in config.sys or as an executable program in autoexec.bat. Please note that there must always be a QRCONT program entry in autoexec.bat or config.sys if /DELAY parameter is specified in the QRESTART.SYS driver line in config.sys.

- QRCONT.EXE in autoexec.bat
(By default, QRCONT.EXE if inserted is placed in first line of Autoexec.bat and Quick Restart configuration is delayed.)
- QUICKWIN.EXE in Windows Startup Group

The "QR_WIN95.EXE" in case of Windows 95 or the "QUICKWIN.EXE" program in case of Windows 3.1 is inserted into the Windows startup group by the installation program.

When you install Quick Restart, apart from the Quick Restart program files, help files and other files that are copied into the Quick Restart installation directory, the following hidden system files are also created.

C:\QRESTART.PTR - Quick Restart information file
(This file is located in the C:\ directory and contains vital information about Quick Restart configuration on your system.)

QRESTART.CFG - Quick Restart configuration file (location varies)
(This file contains detailed configuration information of Quick Restart on your system).

QRESTART.IMG - Quick Restart image file (location varies)
(This image file contains the snapshot of system data and programs that is saved by Quick Restart and is used during restore operation to return the user to previous state.)

Please do not remove or delete any of these hidden system files other than going through the Quick Restart uninstall or installation utilities.

B) QUICK RESTART ENABLING AND RESTORATION

THE QRESTART.SYS DRIVER IS AUTOMATICALLY POSITIONED BY THE INSTALLATION PROGRAM AND IS ALWAYS POSITIONED AFTER HIMEM.SYS DRIVER AND BEFORE ANY EMM386 OR COMPATIBLE DRIVER.

OPTIONALLY, YOU MAY ADD **"/TESTMEM:OFF"** PARAMETER TO YOUR HIMEM.SYS DRIVER LINE IN CONFIG.SYS TO AVOID LONG DELAY CAUSED BY HIMEM'S TESTING OF YOUR EXTENDED MEMORY.

When Quick Restart is configured for system restore operation with the **"/DELAY"** parameter specified in the QRESTART.SYS driver line in config.sys, the system state restore operation is delayed until the QRCONT.EXE program is encountered in either config.sys or autoexec.bat. The default position of QRCONT.EXE soon after installation or configuration is the first line of autoexec.bat.

Also, Quick Restart is enabled to do system state saves only when the QRCONT.EXE program is executed in config.sys or autoexec.bat. If you get an error that says "Quick Restart driver not loaded" when you get into Windows, please make sure that there is both a QRESTART.SYS driver with **/DELAY** option in your config.sys and the QRCONT.EXE program appears in your autoexec.bat or config.sys. Sometimes, it may be that the QRESTART.SYS driver did not load due to some error conditions such as no image file or other such errors.

The **DELAYED** mode of Quick Restart restoration allows all device drivers in config.sys to initialize themselves and their hardware devices after each power-up. This is only required under some special situations.

The QRCONT program may appear similar to "C:\QRESTART\QRCONT.EXE" in autoexec.bat or as "DEVICE=C:\QRESTART\QRCONT.EXE" in config.sys, where C:\QRESTART is the directory where Quick Restart is loaded. The earlier appearance of QRCONT.EXE in either of config.sys followed by autoexec.bat gets executed first. Please avoid making duplicate entries of QRCONT.EXE in either of these system files.

If your system is using real mode autoexec.bat sound drivers, in some cases you may have to insert the DELAY option and position the QRCONT.EXE program after these drivers in autoexec.bat.

If your Windows 95 or 32 bit sound drivers do not function after you restore back into Windows, please refer to your sound card documentation or contact your sound card provider for technical support relating to such problems. It is more appropriate that you request that your sound card provider supply you with an updated driver of the Sound card for Windows that takes care of this inconsistency and problem when Quick Restarting under Windows. Such deviations in performance are more easily taken care of in the proper design and architecture of hardware specific sound card drivers under Windows that works with Windows 95 or Windows 3.1.

The QuickView changer functionality in Windows 95 is implemented using the Display driver interfaces of the Video card. Any issues related to screen resolution switching should be tested independently by using the Windows 95 screen resolution switch functionality and if the same problem exists, it must then be reported to your Video card manufacturer, who will provide the appropriate driver fix for you. Currently, most video display drivers do not support switching of resolution across varying color depths.

6) ENJOY USING QUICK RESTART !

You will be delighted with the convenience and ease of Quick Restart as you start using it. We hope you will have as much and more fun than we have experienced in developing and using this product over the years. We certainly hope to grow and evolve this product to meet all your future computing needs. We will be happy to hear from you on how Quick Restart can make you more productive in your day to day work.

Our email address for feedback/suggestions is QRESTART @ POWER-PRO.COM. For technical support please direct them to TECHSUPPORT@POWER-PRO.COM.

Please visit our world wide web site at <http://www.power-pro.com> for latest product upgrade information and to register your copy of Quick Restart. Technical support is available through world wide web services and email to TECHSUPPORT@POWER-PRO.COM only and you must be a registered customer to receive technical support.