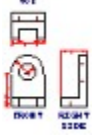


Printing

This tutorial covers how to print a drawing. The drawing can be printed to any printer or plotter which has a Windows print driver.

Choose the *File/Open* command and open the file *sample.gcl*. It should look like the figure below.



Select the *View/Zoom page* command to see the page view.

Next page >>

Printing

Choose the *File/Print/plot setup* command. A dialog is displayed which allows you to select the desired printer for output (if you have more than one installed), the page size, and portrait or landscape mode. Choose the *Landscape* radio button and the printer and paper size you will be using. The page in the drawing area will now be in landscape mode.

Next page >>

Printing

The easiest way to set the plot scale and position the drawing on the page is to use the *File/Page setup/Fit drawing to page* command. This command calculates the scale which will display the drawing as large as possible on the page. Select this command. Round the scale value up to the nearest whole number (e.g. 1.90 would become 2, 2.2 becomes 3) and press the *OK* button. Click on the *Yes* button when the program asks if you want to zoom to the new page. The program automatically centers the drawing on the page using the input scale.

Next page >>

Printing

The position of the drawing on the page can be set using the *File/Page setup/Position drawing on page* command. The scale of the drawing can be set using the *File/Page setup/Print/plot scale* command. The scale determines the size of the drawing on the page by relating drawing units to inches (or centimeters) on the print/plot page. For more information on these commands, choose the *Commands* option on the *Help* menu and select the *File* and then the *Page setup* menu.

Next page >>

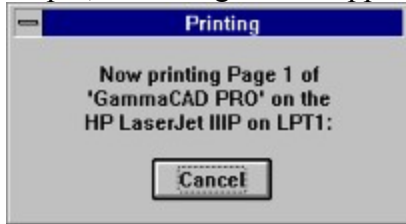
Printing

Choose the *File/Print/plot* command. The print dialog is displayed which allows you to set certain print parameters. Make sure the printer is on and online and click on *OK* to accept the defaults.

Next page >>

Printing

The program will display a dialog like the one below. The printer and port will reflect what you have on your system. Do **NOT** click on the *Cancel* button or press the Enter key. That will end the print job without printing the drawing. When the program is done generating the printer output, the dialog will disappear.



Next page >>

Printing

Once the output is generated, it is sent to Print Manager (unless you have configured a different print manager). Print Manager sends the output to the printer and the printer prints the drawing.

This ends this tutorial.

