

Options



The options dialog is grouped into multiple pages . Each page contains options for different areas of the mail reader.



Some fields of these pages must contain valid information for CyberQWK to operate correctly. If a required field does not contain valid information. The Options dialog box will not close even when canceled. A prompt will be displayed describing the field is required. The page will be displayed and the required field will be selected.

Options User Page

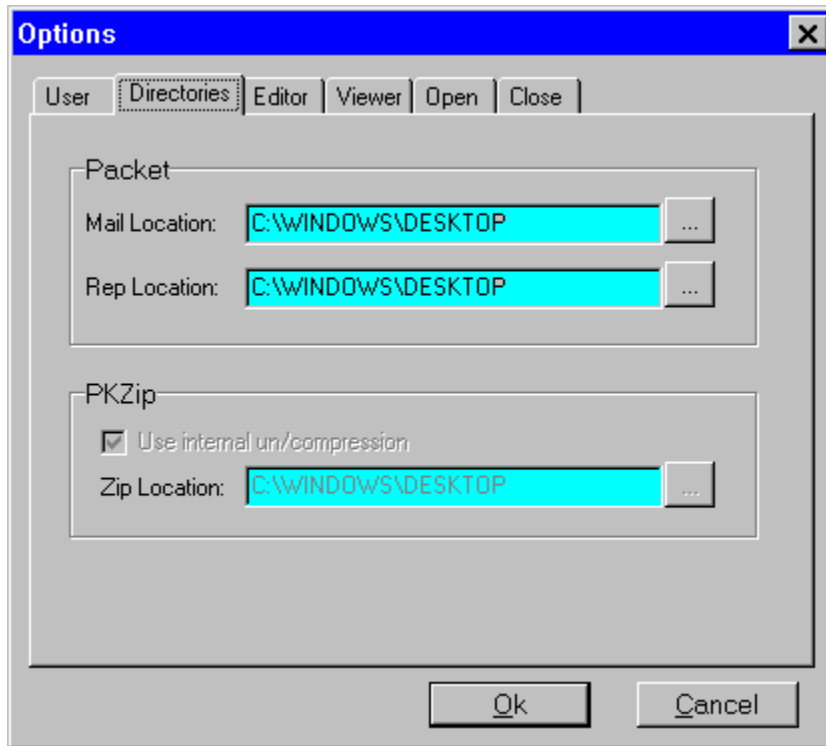
The screenshot shows a window titled "Options" with a close button in the top right corner. Below the title bar is a tabbed interface with tabs for "User", "Directories", "Editor", "Viewer", "Open", and "Close". The "User" tab is active and contains the following fields:

- Name: Dale Clarke
- Alias: Dale Clark <stryder@bbs.multiboard.com>
- Internet: stryder@bbs.multiboard.com
- Signature: Dale Clarke
Email: stryder@bbs.multiboard.com
Email: stryder@multiboard.com

Below the signature field is a checked checkbox labeled "Auto sign messages". At the bottom of the dialog are "Ok" and "Cancel" buttons.

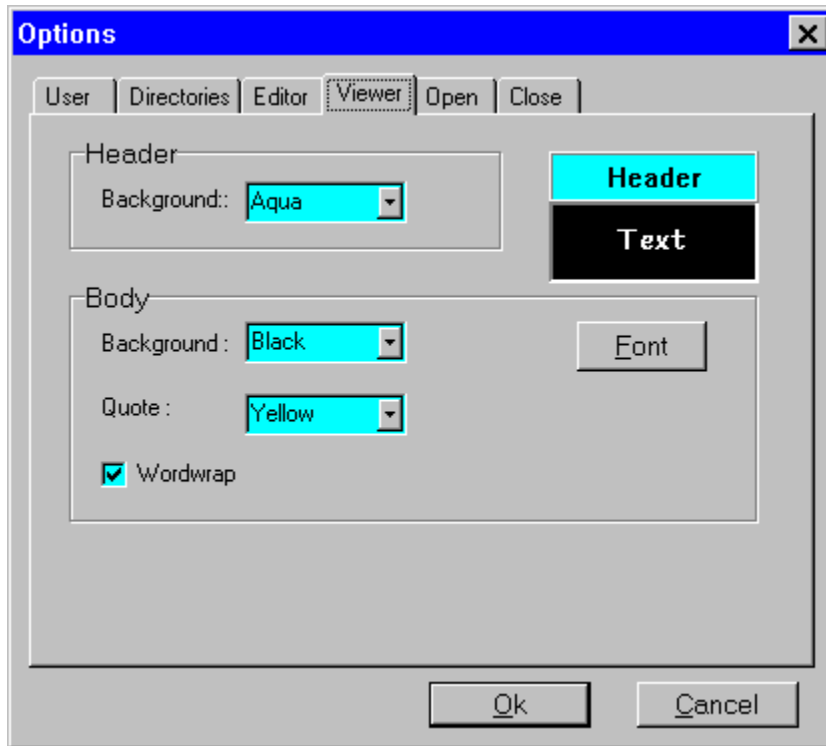
The "User" page is where you enter your name, aliases, email address, and signature if you wish to use one. The CyberQWK off-line mail reader requires your name to be entered here to operate. The CyberQWK off-line mail reader will display the Options Dialog if the first entry is ever empty. A check box is supplied so that your signature can be added to messages automatically.

Options Directories Page



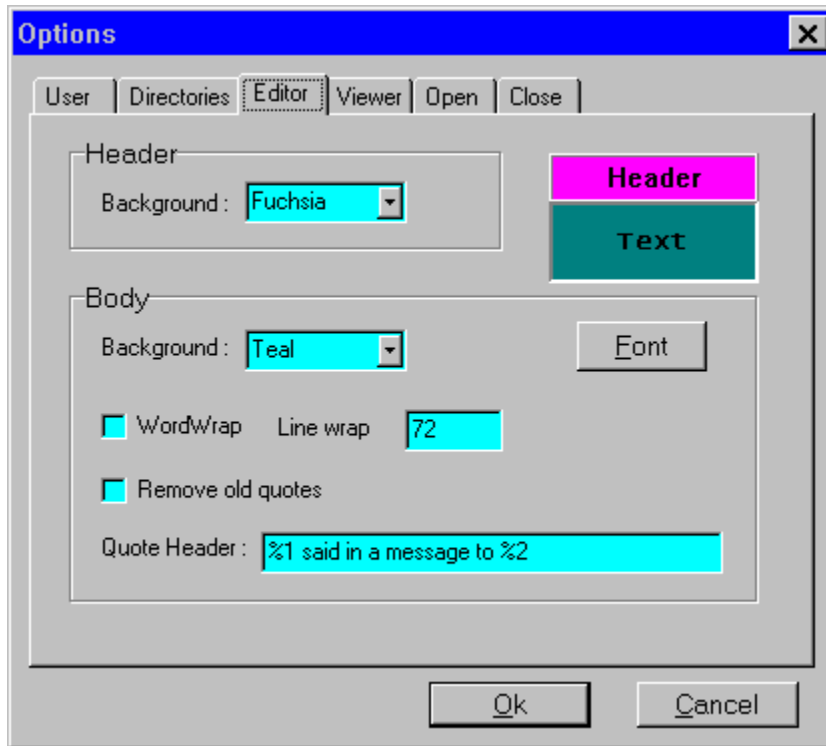
The "Directories" page is where you tell CyberQWK what directories to use. If "Use Internal Archiver" is checked the Zip Location must point to the directory on your system where Pkzip/Pkunzip is located. This edit field will be disabled in the 32 byte version of CyberQWK. PKZip is a 16 byte dos program that does not support long file names. Set the "Packet directory" to your download directory that usually contains your mail packets. Set the "Reply directory" to your upload directory that you use for transferring files to the BBS.

Options Viewer Page



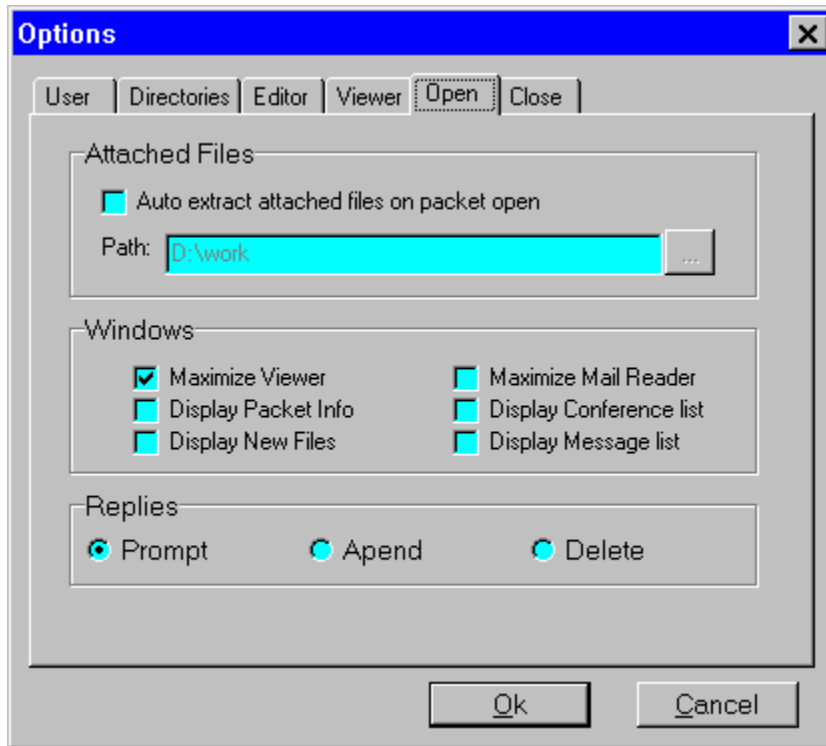
The "Viewer" page is where you set the viewer windows appearance. This page allows you to customize the look to your preferences. It allows the setting of colors and fonts to use.

Options Editor Page



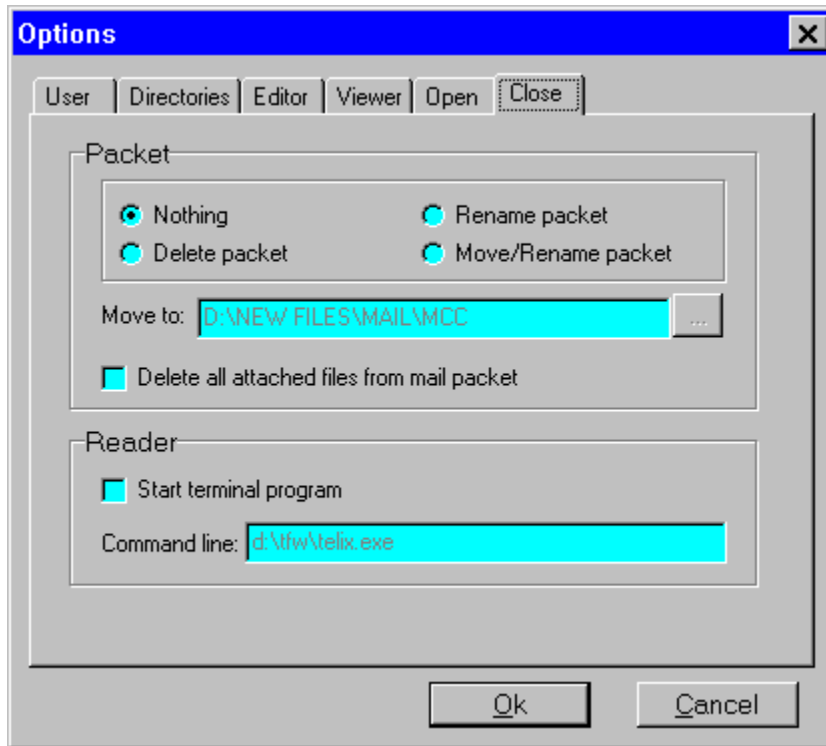
The "Editor" page is where you set the editor windows appearance. It is a good idea to make the colors and fonts different from the viewer's to tell these two windows apart more easily.

Options Open Page



The "Open Packet" page is where you tell cyberQWK what windows you wish to be automatically displayed when a mail packet is opened. This page also allows you to set how to handle attached files and reply packets when first opening a mail packet.

Options Close Page



The "Close" page is where you tell CyberQWK what to do when closing a mail packet or the mail reader. This allows you to set whether you wish to keep, delete, or move the mail packet after reading it. It also allows you to set a program to start when closing the mail reader. A good idea is to set the command line to your terminal program for uploading replies. The command line can also contain parameters for running a script passed to your terminal program.

Enter your name in this field. The name entered can be up to 256 characters long. If the mail packet is a QWKE format it will be displayed this way in all QWKE standard software.

Enter your alias in this field. The alias entered can be up to 256 characters long. If the mail packet is a QWKE format it will be displayed this way in all QWKE standard software. This field can be also used if you wish to have your name appear differently sometimes. From the Post Dialog this field is available in the To: field drop down box.

Enter your internet address in this field. This address will be used for all internet posts.

This field allows the entering of a customized signature to be appended to messages. Please note that some conferences and news groups frown on large signatures. To add the signature to a message select sign from the message menu while editing a message.

If this check box is marked signatures will be automatically appended to messages.

The Options Dialog Box is closed and all fields are applied.

The Options Dialog Box is closed and no changes to the option configurations are made.

Enter the directory were mail packets will be located.

Enter the directory were you wish reply packets to be created in.

If this check box is checked CyberQWK will use its internal compression. If it is not checked the Zip Location field must contain the directory PKZip/PKUnzip is located in. If use internal compression is not checked and PKZip/PKUnzip can not be found. The Options dialog box will not close until it is checked.

Enter the directory where PKZip/PKUnzip is located. If Internal compression is checked this field is not required and will be disabled.

The browse button will display the Browse for Directory dialog box. The directory selected will be inserted into the attached field of the browse button.

Select the color for the Viewer's Header from the drop down box.

Select the color for the Viewers Message Body from the drop down box.

Select the color for the quoted text to be displayed in the viewer. All text that has quotes using the symbol ">" will be displayed in this color.

This check box determines if word wrap is turned off or on when the viewer is first opened.

This button displays the font dialog box. The font selected will be used for text within the viewers message body.

Displays a sample of what the changes will look like.

Select the color for the Editors Header from the drop down box.

Select the color for the Editors Message Body from the drop down box.

This check box determines if word wrap is turned off or on when the Editor is first opened.

Enter the maximum length to wrap lines when quoting messages. This field can not be higher than 79.

If this check box is checked all old quotes will be removed when quoting. Only text that is not already quoted will be quoted.

This button displays the font dialog box. The font selected will be used for text within the editors message body.

This field is used by the quote header macro. This line will appear at the top of quoted messages entered. The macro will replace %1 with the previous senders name, %2 with the previous receivers name and %3 with the previous messages date. If this field is blank no quote header will be added to quoted messages.

If checked all attached files will be extracted to the entered path when opening mail packets.

Enter the directory where you wish all attached files to be auto extracted to when opening mail packets.

If checked the Viewer will be maximized when opening mail packets.

If checked the mail packets properties dialog box will be displayed when opening mail packets.

If checked the New Files Manager window will be displayed when opening mail packets.

If checked CyberQWK's main window will be maximized when opening mail packets.

If checked the Conference List window will be displayed when opening mail packets.

If checked the Message List window will be displayed when opening mail packets.

If selected a prompt whether to delete or add to replies will be displayed if a old reply packet is found.

If selected old reply packets will be appended. This is safe because the mail door will bounce duplicate replies when uploaded.

If selected old reply packets will be deleted when opening mail packets.

Warning: This option should be set with care. Reply packets that have not been sent will be deleted if reopening a mail packet.

If selected nothing is done to the mail packet when it is closed.

If selected the mail packet is deleted when closed.

If selected the mail packet is renamed when closed. The new name will be the first three letters of the old name plus a number. The number will be incremented for every mail packet. Example the first becomes MCC1.QWK the next one will be MCC2.QWK and so forth.

If selected the mail packet is renamed and moved when closed. The new name will be the first three letters of the old name plus a number. The number will be incremented for every mail packet. Example the first becomes MCC1.QWK the next one will be MCC2.QWK and so forth. The directory the mail packet is moved to is set in the Move to field.

This field specifies the directory to move mail packets to when closing. This field is only required if the Move/Rename is selected.

If checked all attached files in the mail packet are deleted when the mail packet is closed.

Warning: Care should be taken when this field is checked. When reopening the mail packet all attached files will no longer be available. They are actually removed and deleted.

If checked the CyberQWK will attempt to run the program specified on the command line when it closes.

The command entered will be executed by CyberQWK when it closes.

