



PrimaSoft Label Printer

Introduction

[Program Description](#)

[New Features and Services](#)

Program Overview

[Main Window](#)

[Speed Bar](#)

[Printing Labels](#)

General

[About PrimaSoft PC](#)

[How To Register ?](#)

[Special Offer](#)

[Other Products](#)

[Sources of PrimaSoft PC's Products](#)

[What Users Say About PrimaSoft PC's Products](#)

[Contact Information](#)


[Frequently Asked Questions](#)

Program Description


PrimaSoft Label Printer is a powerful and flexible utility for printing labels. All common Avery labels are predefined. Different fonts for the label body, header and footer can be selected. Even a logo can be included. Print Preview lets the user see on-screen exactly how labels will look like when printed. Data for labels can be Imported from standard text files into Label Printer so the users of other PrimaSoft products as well as other third party software can export and print labels with their data.

New Features and Services

 This is version 1.0 (first release) so all functions are new.


 Now you can order with VISA credit card directly from us. If you have access to online system fill the registration form, encrypt it, and send to our online address.

 Now we do not charge for upgrades! All new versions are free for our registered users!

 We have opened PrimaSoft WWW Home Page. This is the first place where new releases of our software are ready for downloads:

<http://www.primasoft.com>

Update your bookmarks!

 Great news for America Online users. We have opened PrimaSoft Forum at America Online system. Use the KEYWORD function (under GO TO menu item). Enter the keyword "PRIMASOFT FORUM" or "**PRIMASOFT**", which will take you to the main menu of our Forum.

Main Window

Main Window is where you enter text that will be printed in the labels body.

The list box on the left (Labels) displays the label names. When you click on the label name in the list box the label is selected and both its name and contents are displayed (Label Name, Label Text). In order to create a new label click on a '+' button underneath the Labels list box and then type in the Label Text. You can delete labels by clicking on a '-' button. You can also change the order in which the labels are printed by clicking on a Up-Arrow and Down-Arrow buttons (underneath the Labels list box). There can be up to about 32,000 labels per file.

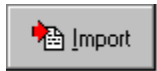
At the bottom of the Main Window there is a [Speed Bar](#) which contains several buttons. The most important button is the [Print](#) button which allows you to design and Print or Preview labels.

Speed Bar - Main Window

The Speed Bar is a shortcut to application functions. Speed Bar is displayed at the bottom part of the program main window. Press buttons on the Speed Bar panel to execute functions.



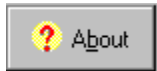
Print - allows to design, preview and print labels.



Import - imports data from a standard text delimited file into the current labels file.



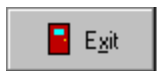
Load - loads labels from another label file.



About - displays information about the program version



Help - displays the standard Windows Help.



Exit - terminates this program. Data is saved automatically to a disk file.

How To Register ?

Choose the most convenient way to register/order the program:

1) Money Order, Check, or Cash

(Price: 20\$US)

Please send your money order, check (drawn on Canadian or American Bank), or cash with a registration form to the following address:

PrimaSoft PC, Inc.
P.O. Box 456
Surrey, BC V3T 5B7
CANADA

2) Credit Card Orders

We accept VISA Card orders. Please send us a registration form with the card number, the cardholder name and the expiration date. You may send all this information to the address mentioned above or by:

Phone: 1-604-951-1085
Fax: 1-604-951-1085
CompuServe: 74643,2635
Internet: abrzezin@direct.ca
AOL: MKosznik
MSN: Primasoft

IMPORTANT: For those who want to send us an order form as an e-mail with the attached encrypted file (order form file). Do it in the following way:

- From INTERNET - then send to our INTERNET address.
- From COMPUSERVE - then send to our COMPUSERVE address.
- From America OnLine - then send to our America OnLine address.
- From Microsoft Network - then send to our Microsoft network address.

3) Compuserve Registration

Compuserve provides a convenient on-line registration system. Just GO SWREG and place an order. The payment will be billed to your Compuserve Statement. You will be asked for the Product Number, keep it handy.

GO SWREG

Product Number: **12517**

4) INTERNET Registration Through Our WWW Home Page or First Virtual (all Credit Cards)

You need a World-Wide Web browser. You may visit our HOME PAGE :

<http://www.primasoft.com>

You need a World-Wide Web browser. You may visit our HOME PAGE at First Virtual directly, use address:

http://www.infohaus.com/access/by-seller/PrimaSoft_Inc

How to register through First Virtual ?

- 1) Locate the following Internet Site: <http://www.fv.com>
- 2) Find the information on how to open a buyer's account at First Virtual (it's easy and you only do it once)
- 3) After you have opened a buyer's account enter the First Virtual Infohause

(on-line shopping mall)

4) Browse the catalog by seller and select PrimaSoft PC, Inc.

5) Select the program you want and download it (just click on the icon)

About PrimaSoft PC

PrimaSoft PC, Inc., a Canadian software company, specializes in developing utility software for PC users. To date, the company has developed a number of DOS and Windows-based utility packages, such as text editors, organizers, catalogues which are currently distributed as shareware all over the world.

Over the past four years, PrimaSoft PC has designed and implemented about 25 Windows programs that are distributed as **PrimaSoft Windows Collection**. All programs use a book-like user interface that seems to be well received by most users, especially computer novices.

Beginning with PrimaSoft Internet Organizer, PrimaSoft PC has introduced a new product line based on greatly improved user interface and powerful DBase database engine (industry standard). New products should appeal to both beginners as well as sophisticated users and corporations (the software can be used in multiuser environments).

We will also be releasing small, user-friendly utilities that can make your life easier. Some examples are: PrimaSoft Dialer, PrimaSoft Mouse Tracker, and PrimaSoft Text.

[Contact Information](#)
[Other PrimaSoft Products](#)

Contact Information

PrimaSoft PC, Inc.
P.O. Box 456
Surrey, BC V3T 5B7
CANADA

Phone: 1-604-951-1085
Fax: 1-604-951-1085

Compuserve: 74643,2635
Internet: abrzezin@direct.ca
America Online:MKosznik
Microsoft Network: Primasoft

Internet - PrimaSoft's WWW Home Page:
<http://www.primasoft.com>

Internet - PrimaSoft's Store at First Virtual:
http://www.infohaus.com/access/by-seller/primasoft_inc

Other PrimaSoft PC Products

1) PrimaSoft Internet Organizer: a powerful yet easy-to-use database system that will help you organize your Internet information; especially useful for keeping track of and accessing Web Pages; supports all major browsers.

3) PrimaSoft Dialer: a fast and small phone dialer; it will save you time by automatically redialing when the line is busy; it will save you money by calculating your current phone call cost.

4) Primasoft Text: a simple but very useful text manipulation program.

5) Internet Book for Windows: organize your Internet resources in one place (simpler version of PrimaSoft Internet Organizer).

6) Phone Book for Windows: neatly organize your personal or business phone book.

7) Password Book for Windows: keep track of your passwords, user IDs, etc.

8) Universal Phone Book for Windows: a flexible phone book for home and business.

9) Collectibles Catalog for Windows: keep track of your collectibles.

10) Plastic Book for Windows: keep track of your "plastic" cards (e.g. credit cards etc.).

11) Daily Notes for Windows: keep small notes organized in one place.

12) Music Catalog for Windows: organize your records, CDs, or cassettes.

13) Movie Catalog for Windows: organize your video tape collection.

14) Car Book Plus for Windows: keep a log of your car expenses and mileage.

15) Contact Book Plus for Windows: organize your personal and business contacts.

16) Home Inventory Book for Windows: keep track of your home or office inventory.

17) Software Book for Windows: keep track of your computer software.

18) Bank Book for Windows: keep track of your bank accounts.

19) Book Catalog for Windows: organize your books or magazines.

20) Calendar/Reminder for Windows: keep track of important events and appointments.

21) Sport Card Catalog for Windows: organize your sport card collection.

22) Coin Catalog for Windows: organize your coin collection.

23) Hardware Catalog for Windows: keep track of your computer hardware.

24) Stamp Catalog for Windows: organize your stamp collection.

25) Student Organizer for Windows: keep track of your courses and school related info.

26) Wine Cellar Book for Windows: organize your wine collection.

27) Who Is Who Book for Windows: keep track of employees and organization members.

[Where can I find the shareware versions of all your programs?](#)

[What Users Say About PrimaSoft PC's Products Special Offer](#)

Frequently Asked Questions

[What happens after I register?](#)

[How can I register your software?](#)

[What is shareware?](#)

[What are the differences between the shareware and registered versions of your software?](#)

[Is there a printed manual included with your registered version?](#)

[Can I register using my credit card?](#)

[Where can I find the shareware versions of all your programs?](#)

[How can I learn about new versions of your software?](#)

Sources of PrimaSoft PC's products.

1) Internet

To find our products on the Internet:

- PrimaSoft WWW Home Page:

<http://www.primasoft.com>

2) America Online

On the America Online do:

Use the KEYWORD function (under GO TO menu item). Enter the keyword "PRIMASOFT FORUM" or "PRIMASOFT", which will take you to the main menu of our Forum.

3) CompuServe

To find our products on CompuServe:

- Go WINPROD and do search by contributor id:74643,2635

- Go WINSHARE and do search by contributor id:74643,2635

4) Microsoft Network

On the Microsoft Network do:

Select Edit/Go To/Other Location menu function. Then type in "Primasoft" and click on the OK button.

5) From authors

To find additional sources of our programs, contact us:

[Contact Information](#)

What happens after I register?

After you register PrimaSoft software you will receive diskettes with the registered version of the program. The registered version is functionally identical to the shareware version but the Registration Reminder screen is no longer displayed and the program is not time-limited. We will always send you the latest version of the program. If you register on-line on the Internet through one of our on-line stores you will be able to download the registered version of the program - in this case we will not send you diskettes by mail. If you register by e-mail we will send you back the registration code.

What is shareware?

Shareware is a marketing method of computer software in which the user has a chance to try the software before buying it (Try-Before-You-Buy). The user can freely copy the shareware version of the program and install it on his/her computer. After the evaluation period (typically about 4 weeks), if the user decides that he/she likes the program and wants to use it, he/she should register the program by sending the registration fee to the program author.

What are the differences between the shareware and registered versions of your software?

Assuming you have the latest shareware version of our software there are no functional differences between the Shareware and Registered versions. The Registered version will not display the Registration Reminder screens and is not time-limited. Registered users are entitled to discounts and in many cases to free upgrades.

Is there a printed manual included with your registered version?

No, we don't include any printed documentation. You will only receive a short letter with Installation instructions. If you have problems using our software try reading help messages. Once you learn how to use one of our programs you should have no trouble using all our other programs. If you still have problems send us an e-mail message.

Can I register using my credit card?

You can register over the phone, through on-line systems (Compuserve, AOL, Internet, MSN), or regular mail using your VISA, Master Card or American Express.

IMPORTANT: For those who want to send us an order form as an e-mail with the attached encrypted file (order form file). Do it in the following way:

- From INTERNET - then send to our INTERNET address.
- From COMPUSERVE - then send to our COMPUSERVE address.
- From America OnLine - then send to our America OnLine address.
- From Microsoft Network - then send to our Microsoft network address.

How can I learn about new versions of your software?

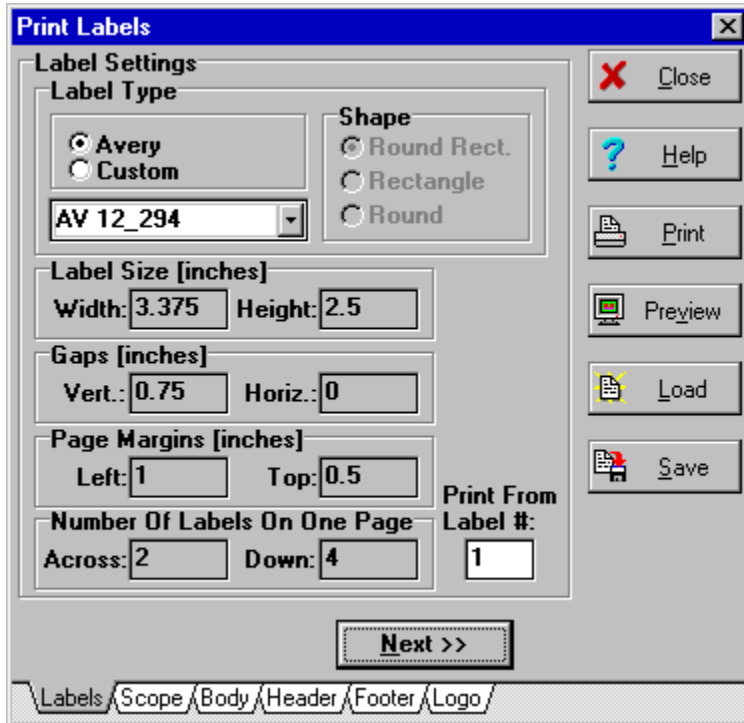
You should visit one of our Web Pages on regular basis. Our Web Pages are the first place where new releases of our software are be announced.

[Location of PrimaSoft home pages on WWW](#)



Print

Clicking on the Print button displays the Print Labels dialog box:



You can design labels by selecting various options on each of the following Pages/Tabs: [Labels](#) [Scope](#) [Body](#) [Header](#) [Footer](#) [Logo](#)

Once your label has been designed you can save it as a Label Template (Save button). Later you can quickly reuse your saved Label Template by clicking on the Load button.

Before you print your labels you should click on the Preview button to make sure that the labels will be printed correctly. When you are sure that all settings are correct load the label sheets into your printer and click on the Print button.

When you are done printing click on the Close button.



Load

Load File button opens the Load Data dialog box where you can select another label file. The default label file name is LABELS.DAT and it is loaded automatically at the program startup.

If you want to create a new label file select Load function and enter the file name that does not exist. The new file will be created for you. Important: by default the extension of the new label file should be DAT.

Shortcut key: Alt - L.

What Users Say About PrimaSoft's WINDOWS COLLECTION

"Great programs! Easy to use. Very beneficial. Reasonable prices. Excellent offer for multiple buys."

"I find your programs very well thought out, with all the essentials there but without all the unnecessary "frills" that complicate some of the more expensive programs. Well done.."

"It is much more intuitive and user friendly than anything I've seen on the commercial market."

"The Best! I have been searching for the program that would give me all of the options available in this program and luckily I can afford to register the program."

"It has made using the "net" much easier."

"I use the Phone Book and the Daily Diary almost every day and I consider them some of the best buys I ever got in software as far as long term usability."

"One word.....Awesome!"

"The concept and the overall presentation/operation of the program are all superior, not only in terms of shareware but also compared to many main-stream commercially marketed apps with which I am familiar. I am making almost daily use of my copy."

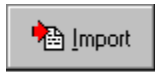
"I absolutely LOVE this program. I only need to use this program for 10 minutes and knew it was perfect! Thank you! :)"

"I've downloaded a lot of stuff over the last few years, but your products are about the most well thought through programs I've seen."

.....

Special Offer

When you want to buy more than 1 program you can take advantage of our special prices: buy one program at full price and then **pay \$10** less for every additional program.



Import

If you have your records in a spreadsheet or a database you can export them to a text (ASCII) file. Then you can Import data from the text file into this program. You can also Export data from many PrimaSoft programs e.g. Phone Book and print labels (after importing).

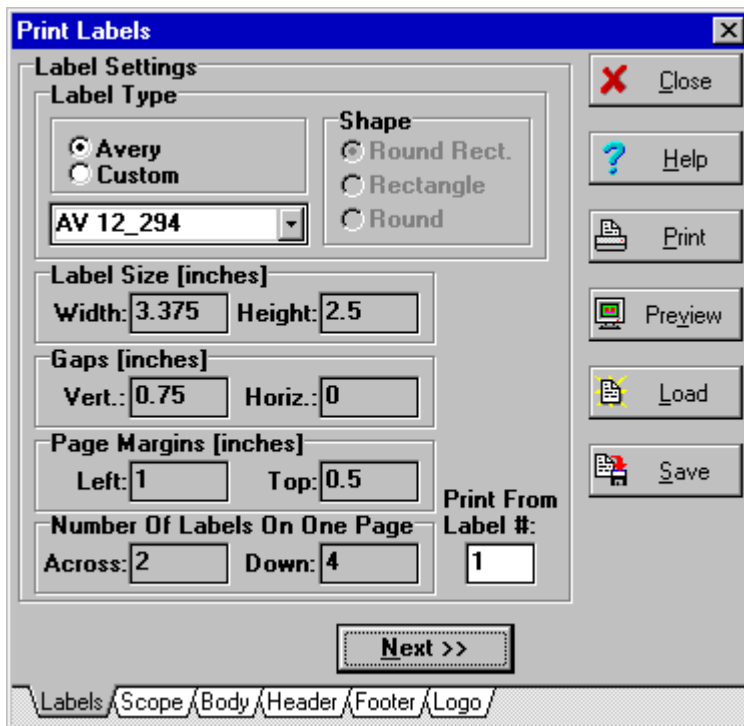
The first step of importing is selecting the fields delimiter and the fields separator in the Export/Import Options dialog box. You should use the same options that you have used when creating the text file. The second and the last step is entering the name of the text file in the Import From File dialog box.

Records are imported to the currently opened label file. If this file has already some labels, new ones will be added to them (merged).

Labels

On this page you select the label type. You can either select an Avery label type or custom label type. If you select an Avery label type you should choose the exact label that you want from the drop-down box. When you select an Avery label the label parameters (e.g. label dimensions) are set automatically. When you select a Custom label you have to enter various label parameters yourself.

If you have an incomplete label sheet (with some missing labels at the top) you may want to specify the label # to print from (counted left to right, top to bottom).



The screenshot shows a 'Print Labels' dialog box with the following settings:

- Label Settings**
 - Label Type:** Avery, Custom. The dropdown menu shows 'AV 12_294'.
 - Shape:** Round Rect., Rectangle, Round.
- Label Size [inches]:** Width: 3.375, Height: 2.5
- Gaps [inches]:** Vert.: 0.75, Horiz.: 0
- Page Margins [inches]:** Left: 1, Top: 0.5
- Number Of Labels On One Page:** Across: 2, Down: 4
- Print From Label #:** 1

Buttons on the right side: Close, Help, Print, Preview, Load, Save.

Bottom navigation: Labels / Scope / Body / Header / Footer / Logo

Next >>

Scope

Here you can specify the scope of the labels printed.

Print All Labels - all labels from the current label file will be printed.

Print From Current Label - only labels from the last selected label (in the [Main Window](#)) to the end of the label file will be printed.

Print One Label - only the last selected label (in the [Main Window](#)) will be printed.

Do Not Print Label Body - this is useful when you want to print a number of identical labels. In this case you can specify the text of the labels in Header and/or Footer. The number of labels printed can be specified in the Copies edit box.

Copies allows you to specify how many times the labels should be printed.

Body

Here you can specify the Left and Top Margins for the label body as well as the font.

Header/Footer

Here you can specify the text to be printed in each label header or footer, the Top and Left Margins as well as the font.

Logo

You can print a logo on your labels by selecting a BMP file (Select button) and specifying the logo position.

