



Desktop+ v2.0

[How to Register](#)

[Copyright Notice](#)

[Overview](#)

- [Screen Saver](#)
- [Sound Changer](#)
- [Theme Changer](#)
- [Wallpaper Animate](#)
- [Wallpaper Changer](#)

[What's New & Version History](#)

[Where to find the latest Shareware Version](#)

[How to get Support](#)

[Removing GTI Desktop+](#)

[ASP Ombudsman Statement](#)

How to Register

If you are using the Shareware version of **GTI Desktop+** you may evaluate it for 30 days. The Shareware version of **GTI Desktop+** will time-out after 30 days. If you wish to continue using **GTI Desktop+** after this time you must register it.

To receive the registered version (or if you already have a copy of the registered version and wish to order additional copies) of **GTI Desktop+**, please use one of the methods listed below (**Note** the details below are for orders only, please refer to the How to get Support help topic for details of how to obtain Technical Support)

By Post

Complete the registration form and send £25* (sterling) or \$40* (US), per copy plus the appropriate shipping charge to

G.T.I. Ltd.
9 / 18 Mavisbank Gardens
Festival Park
Glasgow
G51 1HG
Scotland

(* Residents of member States of the European Union please also add VAT @ 17.5%)

By E-Mail

Complete the registration form and e-mail it to **orders@gtisoftware.com** .

On-Line Registration

If you prefer to register on-line you can do this via one of the following methods

World Wide Web GTI Online order page
<http://www.gtisoftware.com/order.htm>

**CompuServe
SWREG** GTI Desktop+ SWREG number is **XXXX**. To access the swreg system type **go swreg** at any CompuServe prompt and then follow the instructions on screen.

Large Orders

For details of Multiple User, Site Licenses or Customised version please contact G.T.I. at the above address or send e-mail to sales@gtisoftware.com .

GTI Desktop+ V2.0 Registration Form

Name _____

Address _____

City _____

Postcode _____

Country _____

Telephone _____

Fax _____

E-Mail _____

Please send me :-

		(Sterling)	or (US)	Sub Total
_____ Copies GTI Desktop+	@	£ 25*	\$40*	_____
_____ Shipping UK, Europe	@	£ 2*	\$ 3*	_____
_____ Shipping Rest of World	@	£ 3*	\$ 5*	_____
_____ VAT (UK,Europe Only)	@	17.5%		_____

Total Enclosed is _____

(* Residents of member States of the European Union please also add VAT @ 17.5%)

I am paying by:

- CHEQUE/CHECK EUROCHEQUE CASH (registered mail only)
 AMERICAN EXPRESS MASTERCARD/
EUROCARD VISA

(Note GTI can only accept cash & cheques/checks in Pounds Sterling or US Dollars)

Credit Card Number _____ - _____ - _____ - _____

Valid from date _____ - _____ Exp. date _____ - _____

(Signature)

(Date)

Make cheques/checks payable to: **Graham Technology & Information Ltd.**

Where did you hear about GTI Desktop+ ?

Comments

Post your completed order to

**G.T.I. Ltd.
9 / 18 Mavisbank Gardens
Festival Park
Glasgow, G51 1HG
Scotland**

or Email it to

orders@gtisoftware.com

Overview

GTI Desktop+ is a set of integrated desktop utilities for MS Windows which complement many of the desktop features built into Windows 95/NT.

The functions **GTI Desktop+** includes are split into 5 main areas

- Screen Saver

Bored seeing the same screen saver again & again, **GTI Desktop+** will solve this for you because it will start a random screen saver from your collection every time the screen saver kicks in.

GTI Desktop+ also lets you enable hot corners so that as soon as you move the cursor into the corner you selected the screen saver will instantly start

- Sounds

Fed up hearing the same Start & Exit sounds every time you use Windows ,,,, well **GTI Desktop+** has an answer for this too it will automatically change the Startup/Exit sounds every time it runs.

- Themes

GTI Desktop+ can also randomize your MS Themes every time **GTI Desktop+** starts up or at a user defined interval. (**Note** this option requires you have MS Plus installed)

- Wallpaper

And there`s more ...**GTI Desktop+** radically improves the management of desktop wallpapers. Not only does it act as a wallpaper randomizer it will also let you use *bmp*, *jpeg* or *wmf* files as wallpapers. And as if this wasn't enough **GTI Desktop+** can also be set to stretch all wallpapers to the screen size or auto center/tile wallpapers depending on the image size.

- Wallpaper Animate

But if you are really bored with static wallpapers animate them !!! **GTI Desktop+** will turn any Windows 95/NT 4 compliant screen saver into an animated wallpaper

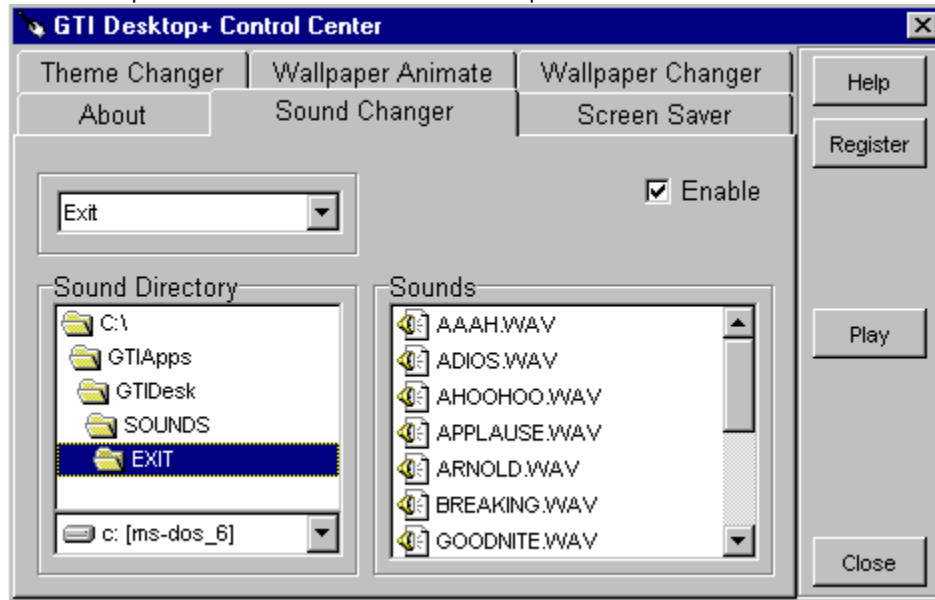
All of the features within **GTI Desktop+** are controlled through one simple integrated package. All of the features within **GTI Desktop+** can be individually turned on or off, so you only need to use the functions you want.

Note The shareware version of **GTI Desktop+** will cease to work 30 days after it was initially installed

Sound Changer

The *Sound Changer* randomly changes the Windows Startup & Exit sounds to one of the sounds in the currently selected directory.

Click on the picture of the screen below for more help

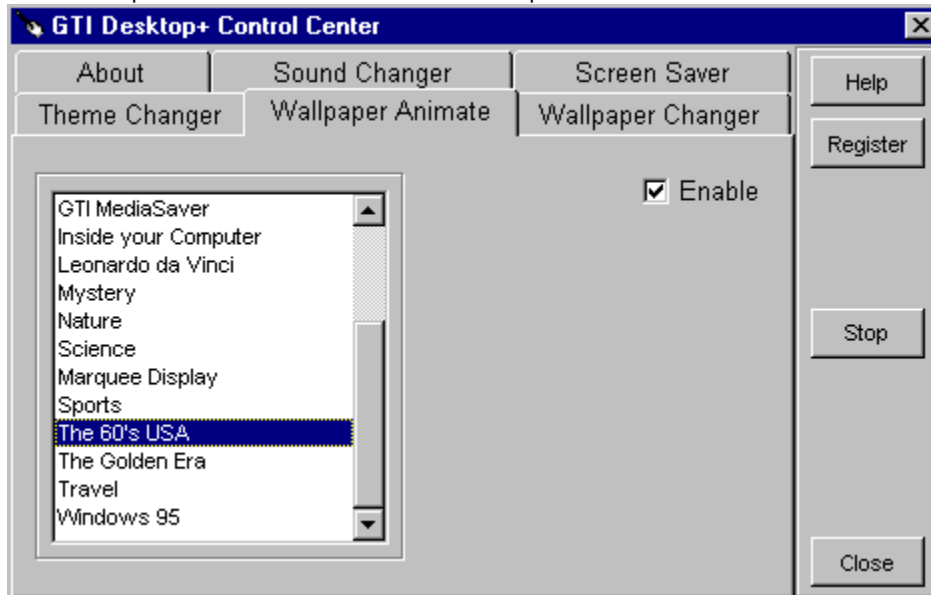


Note To use this feature ensure that you do not have a "Sound Scheme" selected.

Wallpaper Animate

The Wallpaper Animate feature lets you use ANY Windows 95/NT 4 compliant Screen Saver as an Animated Wallpaper.

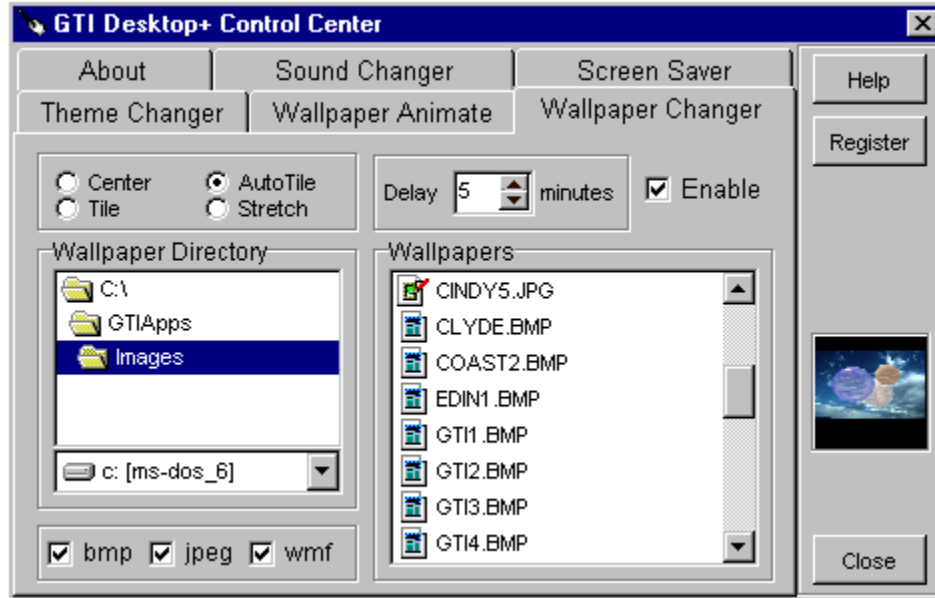
Click on the picture of the screen below for more help



Wallpaper Changer

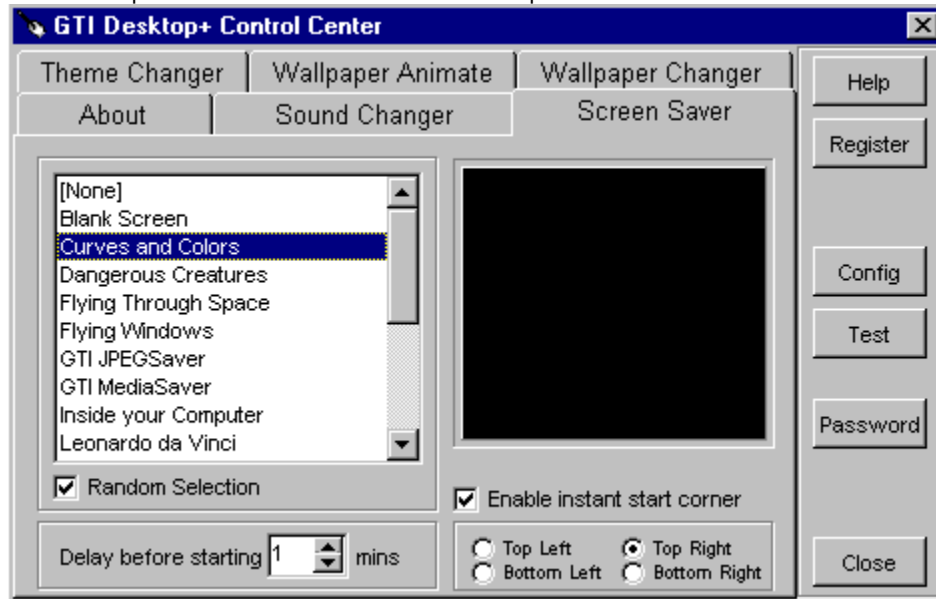
The wallpaper changer randomly changes the wallpaper to one of the wallpapers in the currently selected directory. The delay between changes is user configurable.

Click on the picture of the screen below for more help



Screen Saver

Click on the picture of the screen below for more help



Enable Checkbox

Checking the *Enable* Checkbox will enable/disable the current tab pages functions.

Help Button

Press the *help* button to display help on [GTI Desktop+](#).

Delay Spinner

Click on the up & down arrows to increase or decrease the delay (in minutes) before the function begins.

Wallpaper

Wallpaper is the term used for the background of your windows desktop. Please refer to your windows manuals for a more detailed explanation.

CloseButton

Press the Close button to close **GTI Desktop+ Control Center** window.

Tab Pages

Click on the *Tab* to switch to that *Tab Page*.

Copyright Notice & License

GTI Desktop+ copyright © 1995-97 Graham Technology & Information Ltd. All rights reserved.

GTI Desktop+, GTI +Pack and the GTI logo are Trademarks of Graham Technology & Information Ltd.

All other Trademarks are acknowledged.

This software and accompanying documentation are protected by United Kingdom Copyright law and also by International Treaty provisions. Any use of this software in violation of Copyright law or the terms of this limited license will be prosecuted to the best of our ability.

License (Shareware Version) License (Registered Version)

To find out which version of **GTI Desktop+** you are using, and therefore which of the above licenses apply to you, please refer to the *About* tab in the **GTI Desktop+ Control Centre**. This will state if you have the Shareware or Registered version of **GTI Desktop+**.

LIMITED WARRANTY AND DISCLAIMER OF WARRANTY

(Shareware & Registered Version)

THIS SOFTWARE AND ACCOMPANYING WRITTEN MATERIALS (INCLUDING INSTRUCTIONS FOR USE) ARE PROVIDED "AS IS" WITHOUT WARRANTY OF ANY KIND. FURTHER, GRAHAM TECHNOLOGY & INFORMATION LTD (GTI) DOES NOT WARRANT, GUARANTEE, OR MAKE ANY REPRESENTATIONS REGARDING THE USE, OR THE RESULTS OF USE, OF THE SOFTWARE OR WRITTEN MATERIALS IN TERMS OF CORRECTNESS, ACCURACY, RELIABILITY, CURRENTNESS, OR OTHERWISE. THE ENTIRE RISK AS TO THE RESULTS AND PERFORMANCE OF THE SOFTWARE IS ASSUMED BY YOU. IF THE SOFTWARE OR WRITTEN MATERIALS ARE DEFECTIVE YOU, AND NOT GTI OR ITS DEALERS, DISTRIBUTORS, AGENTS, OR EMPLOYEES, ASSUME THE ENTIRE COST OF ALL NECESSARY SERVICING, REPAIR, OR CORRECTION.

THE ABOVE IS THE ONLY WARRANTY OF ANY KIND, EITHER EXPRESS OR IMPLIED, INCLUDING BUT NOT LIMITED TO THE IMPLIED WARRANTIES OF MERCHANTABILITY AND FITNESS FOR A PARTICULAR PURPOSE, THAT IS MADE BY GTI, ON THIS GTI PRODUCT. NO ORAL OR WRITTEN INFORMATION OR ADVICE GIVEN BY GTI, ITS DEALERS, DISTRIBUTORS, AGENTS OR EMPLOYEES SHALL CREATE A WARRANTY OR IN ANY WAY INCREASE THE SCOPE OF THIS WARRANTY AND YOU MAY NOT RELY ON ANY SUCH INFORMATION OR ADVICE. YOU MAY HAVE OTHER RIGHTS WHICH VARY FROM STATE TO STATE.

NEITHER GTI NOR ANYONE ELSE WHO HAS BEEN INVOLVED IN THE CREATION, PRODUCTION OR DELIVERY OF THIS PRODUCT SHALL BE LIABLE FOR ANY DIRECT, INDIRECT, CONSEQUENTIAL OR INCIDENTAL DAMAGES (INCLUDING DAMAGES FOR LOSS OF BUSINESS PROFITS, BUSINESS INTERRUPTION, LOSS OF BUSINESS INFORMATION, AND THE LIKE) ARISING OUT OF THE USE OR INABILITY TO USE SUCH PRODUCT EVEN IF GTI HAS BEEN ADVISED OF THE POSSIBILITY OF SUCH DAMAGES.

THIS LIMITED WARRANTY SHALL BE GOVERNED BY THE LAWS OF SCOTLAND. THE UNITED NATIONS CONVENTION ON CONTRACTS FOR THE INTERNATIONAL SALE OF GOODS IS SPECIFICALLY DISCLAIMED.

BY USING GTI DESKTOP+ YOU ACKNOWLEDGE THAT YOU HAVE READ THIS LIMITED WARRANTY, UNDERSTAND IT, AND AGREE TO BE BOUND BY ITS' TERMS AND CONDITIONS. YOU ALSO AGREE THAT THE LIMITED WARRANTY IS THE COMPLETE AND EXCLUSIVE STATEMENT OF AGREEMENT BETWEEN THE PARTIES AND SUPERSEDE ALL

PROPOSALS OR PRIOR AGREEMENTS, ORAL OR WRITTEN, AND ANY OTHER COMMUNICATIONS BETWEEN THE PARTIES RELATING TO THE SUBJECT MATTER OF THE LIMITED WARRANTY.

Directory Change Box

The directory change box allows you to set the default directory for the current function.

To change directory double-click through the icons until the directory you want is selected.

Drive Change Box

The drive change box lets you select the default drive for the current function.

To change the default drive click on the down arrow to list the available drives and then click on the drive you want to select

Sound Files

List of sound files in the current directory

Center Wallpaper

Click this if you want to center the wallpaper.

Tile Wallpaper

Click this if you want to tile the wallpaper.

Wallpaper List

List of wallpaper (.bmp, .jpeg, .jpg & .wmf) files in the current directory.

Screen Saver List

List of screen savers you can select. Click on the one you want to use.

Config Button

Lets you configure the currently selected screen saver.

Test Button

Launches the currently selected screen saver.

Animated Wallpaper List

List of animated wallpapers you can select. Click on the one you want to use.

Start Button

Starts the currently selected animated wallpaper.

Stop Button

Stops the animated wallpaper.

Sound To Change

Lets you set whether you want the currently directory to be used for both startup & exit sounds or just startup sounds or just exit sounds.

License (Shareware Version)

This version of **GTI Desktop+** (the software) is released as Shareware. Graham Technology & Information, Ltd (GTI) hereby grants you a limited license to use the software for evaluation purposes for a period not to exceed thirty (30) days. If you intend to continue using this software (and/or it's documentation) after the thirty (30) day evaluation period, you MUST make a registration payment to GTI.

Using this software after the thirty (30) day evaluation period, without registering the software is a violation of the terms of this limited license.

You may not: rent, lease, modify, translate, disassemble, decompile, reverse engineer, or create derivative works based upon the Software.

All rights not expressly granted here are reserved to GTI .

See the help topic [How to Register](#) for more information.

Distribution

You are encouraged to pass a copy of the Shareware version of **GTI Desktop+** along to your friends and colleagues for evaluation. You may also upload copies of it to bulletin boards, Online Services or the Internet..

If you do so, you must include all the **GTI Desktop+** shareware files.

If you include **GTI Desktop+** as part of a commercially released Shareware Collection or as part of a Magazine or Book cover disk you must clearly state that a separator registration fee is payable to the Package Author (or their Agents) to continue using Shareware beyond the evaluation period.

License (Registered Version)

Grant of License. Graham Technology & Information, Ltd (GTI) hereby grants to you the right to use one (1) copy of the enclosed GTI program (the "Software") on a single computer. For purposes of this section, "use" means loading the Software into RAM, as well as installation on a hard disk or other storage device.

You may not: rent, lease, modify, translate, disassemble, decompile, reverse engineer, or create derivative works based upon the Software.

U.S. Government Information: Use, duplication, or disclosure by the U.S. Government of the computer software and documentation in this package shall be subject to the restricted rights applicable to commercial computer software as set forth in subdivision (b)(3)(ii) of the Rights in Technical Data and Computer Software clause at 252.227-7013 (DFARS 52.227-7013). The Contractor/manufacturer is Graham Technology & Information Ltd, 9/18 Mavisbank Gardens, Festival Park, Glasgow, G51 1HG, Scotland.

The licensed program is licensed, not sold. Nothing in this agreement shall be construed as conveying title in the licensed program to Licensee.

The Software, together with any archive copy thereof, shall be either returned to GTI or destroyed when no longer used in accordance with this Agreement, or when the right to use the Software is terminated.

All rights not expressly granted here are reserved to GTI .

If you wish to order additional copies please refer to the help topic [How to Register](#) for more information.

Distribution

You MUST NOT pass on to anyone copies of this version of **GTI Desktop+** or upload it to Bulletin Boards, Online Services or the Internet. This is a registered version, it is NOT SHAREWARE.

What's New & Version History

New for Version 2.0 (*Windows 95/NT*)

- Use ANY Windows95/NT4 compliant screen saver as an animated wallpaper
- Screen Saver preview window
- Screen Saver instant start hot corners
- Themes Randomizer
- Wallpaper auto tile (i.e. center large images & tile small images)
- Stretch wallpaper to screen size
- Use bmp, jpeg or wmf files as wallpaper
- Wallpaper preview window

Version 1.3

- Additional Screen Savers added
- Additional bitmaps added
- *Windows95 style* interface
- Code optimized to reduce size & improve performance
- Context sensitive help improved

Version 1.21

- Shareware Version time limited to 30 days
- Context sensitive help improved
- .ini file not updating properly bug corrected

Version 1.2

- Shareware Version time limited to 14 days
- Randomizer added to Screen Saver
- Support added for standard windows .SCR screen savers
- Fixed crash when bitmap directory not present bug
- Fixed Animated Wallpaper not clearing screen when stopped bug

Version 1.1 First version generally released

- Fixed screen saver stopping after few mins bug

Version 1.0 Initial Version, limited release

How to get Support

If you have any problems with **GTI Desktop+** please send an E-Mail message to
support@gtisoftware.com

Please include a full description of the problem, the version of **GTI Desktop+** , the configuration of your PC and any other information you feel may be relevant to the problem.

Note Support is *ONLY* guaranteed for registered users. However we will attempt to provide support whenever possible for users of the Shareware version.

G.T.I. are members of the Association of Shareware Professionals (ASP). Therefore in the unlikely event that you are dissatisfied with the support you have received from G.T.I. you may lodge a formal complaint with the ASP. Please refer to the [ASP Ombudsman Statement](#) help topic for details of this procedure.

Random Selection

If you want a different screen saver to play each time, click on [this box](#).

Where to find the latest Shareware Version

You will find the latest shareware version of **GTI Desktop+** in the following places.

Online Services

Compulink Information Exchange (CIX) (UK based, with World Wide access via the Internet)

CompuServe (World Wide)

Internet

FTP archives (World Wide)

WWW (World Wide)

BBS

Belgium Edge Of Delight

CIX

CIX is a UK based subscription conferencing system. You will find the latest version of **GTI Desktop+** in the *2newfiles* topic of the *filepool* conference.

CIX's phone number is 0181 296 1255 all speeds upto V.34 are supported.

Via the Internet telnet to cix.compulink.co.uk .

CompuServe

CompuServe is a world-wide subscription conferencing system. You will find the latest version of **GTI Desktop+** in the *pikapro* forum and library *S20* of the *winav* forum.

Internet FTP archives

You will find the latest version of [GTI Desktop+](#) on many FTP archives including Cica & Simtel mirror sites.

Internet WWW

You will find the latest version of **GTI Desktop+** on the following Web Sites.

G.T.I.'s home page

<http://www.gtisoftware.com>



Ombudsman Statement

G.T.I. is a member of the Association of Shareware Professionals (ASP). The ASP wants to make sure that the Shareware principle works for you. If you are unable to resolve a Shareware-related problem with an ASP member by contacting the member directly, ASP may be able to help.

The ASP Ombudsman can help you resolve a dispute or problem with an ASP member, but does not provide technical support for members' products. Please write to the ASP Ombudsman at

**545 Grover Road,
Muskegon,
MI 49442-9427,
USA**

or FAX the ASP Ombudsman

616-788-2765

or send a CompuServe message via CompuServe Mail to the ASP Ombudsman

70007,3536

or send an e-mail via the Internet to the ASP Ombudsman

70007.3536@compuserve.com

Removing GTI Desktop+

To remove **GTI Desktop+** from your system use the Windows *control panel* - *add/remove programs* applet.

For more detailed instructions please refer to the [removing programs from your computer](#) topic in the standard Windows help file.

Edge of Delight BBS

Edge Of Delight DiSTSiTE Officiel For GTI's software

Nodes : 1) +32-2-375.5651 Boca 28.8K 2:293/735
2) +32-2-375.8923 ZyXel 19.2K

Email: pascal.vandersteegen@infoboard.be

Hobby_Soft: 32:400/2

Dgl : 68:320/5

fidonet.org: 2:291/735

Theme Changer

The Theme Changer randomly changes your Themes. You can set the Themes to change when GTI Desktop+ starts and/or after a user defined delay.

Click on the picture of the screen below for more help



Note MS Plus! is required for this feature.

Register Button

Displays details of how to register GTI Desktop+

File Types

Select the file types you want to use as wallpaper.

Autotile Wallpaper

Click this if you want to *Autotile* the wallpaper. (i.e. automatically centre large images and tile small images)

Stretch Wallpaper

Click this if you want to stretch the wallpaper to the fill the entire screen.

Play Sound

Click this if you want to preview the currently selected sound.

Set Password

Click this if you want to set/change the screen saver password.

Note This only applies to Windows 95

Screen Saver Instant Start

Click this if you want to enable screen saver instant start hot corners

Select Hot Corner

Choose the corner that you want to be the instant start hot corner. (i.e. which corner will cause the screen saver to instantly start whenever you move the mouse pointer into it)

List of Themes

List of Themes installed on your computer

Change Theme on Startup

Choose if you want the theme to change every time **GTI Desktop+** starts up

Change the Theme every X mins

Choose if you want the theme to change every X mins.

