

## Backup links

The “ Create backup link ” function is a very powerful way to achieve quick and efficient backups). Click this item in the File menu, check the appropriate options and filenames.

“ Target zip file ” is where is the data to be copied,

“ List file ” is a list file created with the “ Add with list ” Tab in Szipw or in the “ Create backup link ” dialogbox.

To create a Backup link

- Click on the “ Create backup link ” menu item from the main “ File ” menu.open an existing zip file.
- Add your masks/filenames to the list.
- Save the list.
- Click on the “ Create link ” button

Whenever you want this backup to occur, run the Backup link you have just created.

## **File comments**

Zip format allows the zip file to contain additional comments for each file, if you want to save additional information for a file, type it in this field, changes are updated when you leave this field.

## **Method and ratio**

Compression method and compression ratio, this ratio shows of how many percent the file has shrunk.

## **File attributes**

File attributes, you can change these settings by clicking the different checkboxes.

## **Uncompressed size**

Uncompressed size of the file, this is the actual space will use once expanded.

## **Compressed size**

Compressed size of the file, this is the actual space it uses in the zip file.

## **Time**

Time of the selected file, you can edit this field and change its contents..

## **Date**

Date of the selected file, you can edit this field and change its contents..



## **Filename**

Filename of the selected file, you can rename the file by typing a new name or changing the current name, szipw looks for duplicate filenames (if you want to move the file to another location within the archive, drag it instead)..

## **Archive comment**

The zip format allow one main comment for the archive. Type in a comment, changes are automatically updated when you leave this field.

## **File Mask**

The file mask edit, allow you to define a search criteria for files to be selected. You can type several file masks at once but masks have to be separated by a semi-colon (;).

Ex: \*.c;\*.tmp;\*.pas

## Files

Select files and directories to add, if you select nothing, szipw will then add \*.\* from the current directory.

## **Move files**

this instructs Szpw to move files into the archive, every file added to the archive is deleted from the disk.

## **Password**

Type the password you want to use with the archive in this field.

## **Volume label**

Instruct Szipw to store the name of the volume where files were found (useful for zip images of diskettes with volume label).

## **Span disks**

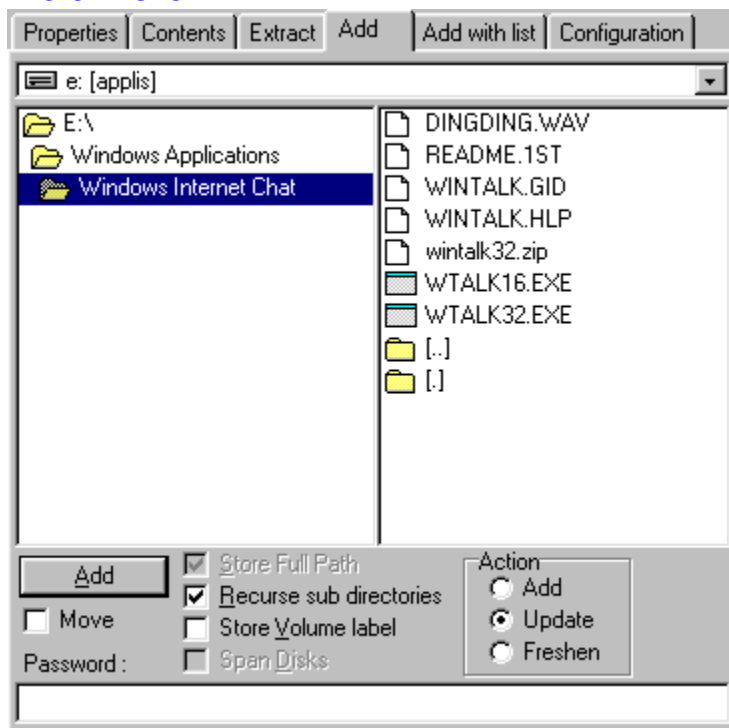
Span disk is only available for removable media, it allows to split a big zipfile across several disks.



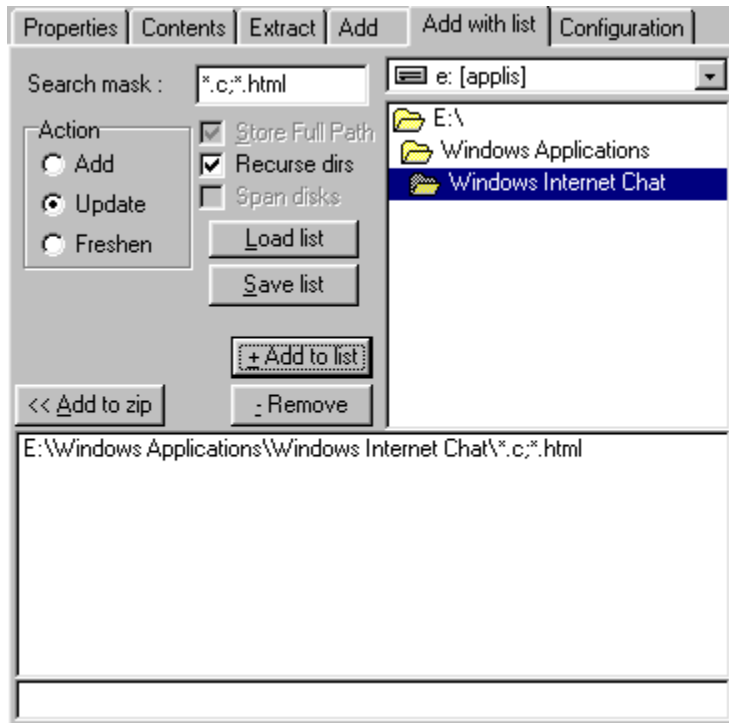
## Property tab

Properties	Contents	Extract	Add	Add with list	Configuration
Archive comment					
Super Zip For Windows 95, Version 2.3a					
Szipw is the Ultimate Zip file manager for Windows 95. Makes Zip archives with long filenames. View Zip files like Disks with a directory tree.					
Selected File properties					
Filename : REGISTER.TXT					
File Date :	25/02/96	File Attributes			
File Time :	09:36:00	<input checked="" type="checkbox"/> Archive	<input type="checkbox"/> Hidden		
Comp Size :	753	<input type="checkbox"/> Read Only	<input type="checkbox"/> System		
File size :	1934	<input type="checkbox"/> Volume	<input type="checkbox"/> Encrypted		
		Method :	Deflated(X)	61.1%	
Registration information					

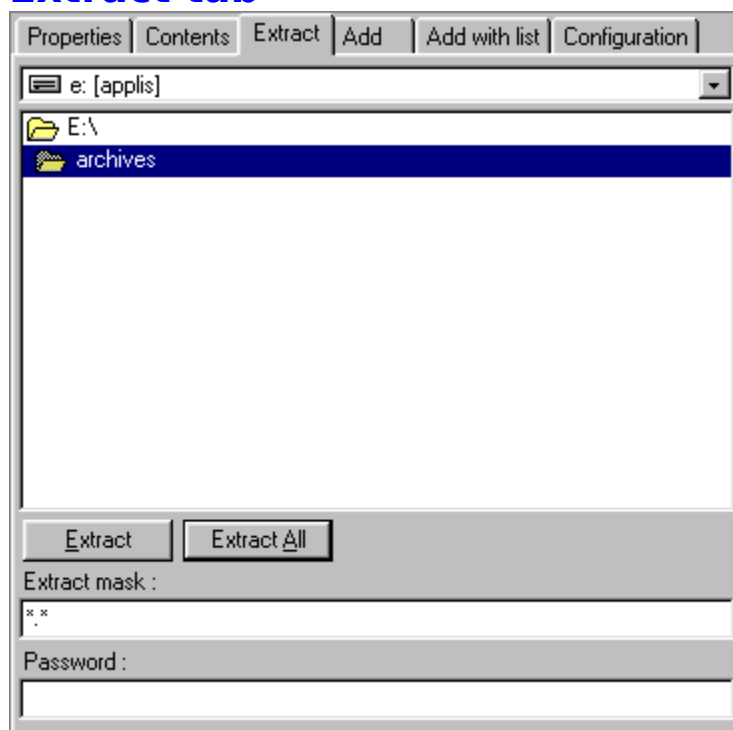
## Add Tab



## Add with list Tab



## Extract tab



## Configuration

Properties | Contents | Extract | Add | Add with list | Configuration

Test archive after  
Never

Extraction Overwrite  
Prompt

Compression level  
min max

Default Action  
 Add  
 Update  
 Freshen

Store full path Name  
 Recurse sub directories  
 Only text files edit

Sort archive display (with big archives, loading will be slower)

Directories  
 Use default directories  Use last accessed directories

Default Open directory :  
F:\backups

Default Add directory :  
E:\Windows Applications\Windows Internet Chat

Default Extract directory :  
E:\archives

## Contacting ASTEC



You can contact ASTEC through EMAIL by sending a message to : **ollivier@msn.com**

see also

[Where to download latest version](#)

[Shareware](#)

[Disclaimer](#)

[Bug reports](#)

## Registering

Szipw Registration is 150 French FRANCS (\$35).

(Registration disables annoying nag features).

International money orders, or checks (in FRENCH FRANCS).

Print the file "REGISTER.DOC", fill it out and send it to :

ASTE  
Ollivier CIVIOL  
11 Rue Segeral Verninac  
19100 BRIVE, FRANCE

**(Make checks payable to Ollivier CIVIOL)**

you have an Email address, put it on the order form, we will send you your registration number, in a private message, else you will receive it by mail or by fax if you put your fax number on the form.

### **CREDIT CARD ORDERS ONLY -**

---

You can order with **MC, Visa, Amex, or Discover** from **Public (software) Library** by **calling 800-2424-PsL or 713-524-6394** or by **FAX to 713-524-6398** or by **CIS to 71355,470** by **Email at 71355.470@compuserve.com**.

You can also mail credit card orders to PsL at P.O.Box 35705, Houston, TX 77235-5705.

**Product ID# : 15013**

**THE ABOVE NUMBERS ARE FOR CREDIT CARD ORDERS ONLY. THE AUTHOR OF THIS PROGRAM CANNOT BE REACHED AT THESE NUMBERS.**

Any questions about the status of the shipment of the order, refunds, registration options, product details, technical support, volume discounts, dealer pricing, site licenses, non-credit card orders, etc, must be directed to **ollivier@msn.com**.

Open the file REGISTER.DOC, enter the information about your order, close the file, send us an Email message, attach the file REGISTER.DOC to your message. We need this information to insure proper registration.

To insure that you get the latest version, PsL will notify us the day of your order and we will ship the product directly to you.

see also  
[Shareware](#)  
[Disclaimer](#)  
[Bug reports](#)

# Disclaimer

## DISCLAIMER AND AGREEMENT

Users of Szipw must accept this disclaimer of warranty. If you do not accept this disclaimer, do not use the programs.

THE SZIPW SOFTWARE SUITE IS SUPPLIED AS IS. THE PUBLISHER DISCLAIMS ALL WARRANTIES, EXPRESSED OR IMPLIED, INCLUDING, WITHOUT LIMITATION, THE WARRANTIES OF MERCHANTABILITY AND OF FITNESS FOR ANY PURPOSE. THE PUBLISHER ASSUMES NO LIABILITY FOR DAMAGES, DIRECT OR CONSEQUENTIAL, WHICH MAY RESULT FROM THE USE OF SZIPW, EVEN IF THE PUBLISHER HAS BEEN ADVISED OF THE POSSIBILITY OF SUCH DAMAGES.

THE LICENCE AGREEMENT AND WARRANTY SHALL BE CONSTRUED, INTERPRETED AND GOVERNED BY THE LAWS OF THE USA. YOU MAY HAVE OTHER RIGHTS WHICH VARY FROM ONE STATE TO ANOTHER.

Szipw is shareware, and is provided at no charge to users for evaluation. Feel free to share it with your friends and colleagues, but please do not give it away altered or as part of another system. The essence of shareware software is to provide computer users with quality software without high prices, and at the same time to provide incentive for programmers to continue to develop new products.

If you find Szipw or any part of it useful, and you are continuing to use it after the trial period of 28 days, you must make the registration. In return you will be given a user name and registration number to disable the shareware reminders. This information will be good for all future shareware minor releases of Szipw.

see also

[Shareware](#)

[Registering](#)

[Contacting ASTEC](#)



## **Where to download latest version**

You can download the latest version at:

The Microsoft Network in the Windows 95 Shareware Library.

Or

on the WEB at :

[HTTP://www.voicenet.com/~jank/astec/](http://www.voicenet.com/~jank/astec/)

## Test Archive

Once files were added to or removed from the archive, Szipw can test the archive automatically. Settings can be Prompt, Always, never.

## **Extraction Overwrite**

When files are extracted from an archives and the same file exists on the system, should Szipw: Prompt, overwrite or never overwrite?

## **Add**

Set default archive operation to 'ADD files', this mode will add every specified file into the archive, if files of the same name already are in the archives they are overwritten by the new files.

## **Update**

Set default archive operation to 'UPDATE files', this mode will add every specified file into the archive, if files of the same name already exists, file is updated only if the file to add is more recent than the file in the archive.

## **Freshen**

Set default archive operation to 'FRESHEN files', this mode will update files that already exists in the archive and only if files to add are newer than the file in the archive.

## **Compression Level**

Set default compression level. (Min = fastest, Max = slowest)

## **Store FullPath**

Store full path of files that are compressed (drive information is not saved).



## **Recurse Sub-Dirs**

Recurse subdirectories when adding directories to an archive.

## **Only Edit Text Files**

Only allow text files to be viewed in Szipw contents viewer.

## Sort Archive

Sort the archive contents when loading an archive. Big archive will load slower, because the tree has to be resorted for every file read from the zipfile.

## **Use Default Directories**

Checking this makes `szipw` use the default directories you will specify in the directories fields.

## **Use Last Accessed Directories**

Checking this will tell szipw to use the last accessed directories.

## **Default Open Directory**

Specify the directory where zip files are located.

## **Default Add Directory**

Specify the location of files you add to zipfiles.

## **Default Extract Directory**

Specify the directory where you will extract zip files.



## **Browse**

This will allow you to browse the computer and select a directory.

## Add files

Add files adds the selected files to the zip file. Select files in the file list box (using Shift or Control keys) then click the 'Add' button or drag the files to the ZipViewer.

See also

[Expanding files](#)

[Add files with list](#)

## Add files with list

Add files with list is a powerful way to compress files, select a directory and a File mask, add the directory/mask to the list. When all Directory/mask pairs are added, click on the 'Add to Zip' button.

see also

[Add files](#)

[Expanding files](#)

## Bug reports

You can report bugs directly to the author of the program by writing a message to this Internet address :

**[ollivier@msn.com](mailto:ollivier@msn.com)**

If you do not get an answer then you should contact ASTEC at : [Contacting ASTEC](#)

see also

[Shareware](#)

[Disclaimer](#)

## Command line options

You can invoke Szipw with the following commands :

```
Szipw [Options...] [ZipFile] [Files to add/Extract | @filelist] [ExtractPath]
```

Options :

-A[ZMRPTSI&]	Add [files to add] or files in [@filelist].
-U[ZMRPTSI&]	Update with [files to add] or files in [@filelist].
-F[MRPTSI&]	Freshen with [files to add] or files in [@filelist].
-E[SI]	Extract specified files to [ExtractPath].
-T[SI]	Test files in archive.
-D[TSI]	Delete [files to delete] or files in [@filelist].
-Cpassword	Encrypt zip file with password . (no space between 'C' and password !).
@cmdfile	Command file (.zmd), (no - character, only one parameter allowed)

----- scroll down for [ZMRPTSI&] information -----

[M]	Move files (Deleted after compression).
[R]	Recurse sub-directories.
[P]	Store Full path information.
[S]	Stay opened upon completion.
[T]	Test archive or Test after compression.
[Z]	Zero zip file (overwrite existing zip file with empty one).
[I]	Run Szipw in Iconized state.
[&]	Span archive over multiple disks (only removable media).

ex:

```
Szipw32 -a -t -s c:\temp\test.zip c:\*.bat c:\config.sys d:\*.bmp;*.ico;*.txt
or
Szipw32 -ats c:\temp\test.zip c:\*.bat c:\config.sys d:\*.bmp;*.ico;*.txt
or
Szipw32 -ats c:\temp\test.zip @mylist.txt
or
Szipw32 -e c:\temp\test.zip *.bat c:\temp (extracts all *.bat to c:\temp)
or
Szipw32 -e c:\temp\test.zip myfile.txt c:\temp (extracts myfile.txt to c:\temp)
or
Szipw32 -e c:\temp\test.zip @mylist.txt c:\temp
or
Szipw32 "@command file .zmd"
```

{ this runs szipw with the command file 'command file .zmd'.  
See : Menu file, create backup link item }

etc...

{files to add or extract} is a list of filenames, several masks can be specified.

ex: 'c:\\*.c' or 'c:\\*.c;\*.h;\*.mak'

@filelist:

A file list can replace [files to add], use notepad to create a list or use Szipw to create a list in the 'Add with list' section.

[&]: Span archive across several diskettes (only removable media is accepted as target).

**Notes:**

Make sure you include parameters between quotes. In a shortcut to a zip file, the shortcut properties should look like this :

```
"E:\szipw32.exe" "-ats" "e:\test.zip" "c:\*.bat"
```

In this case quotes are not useful, on the other hand when using long filenames containing spaces, quotes are mandatory.

**EXAMPLES :**

This will extract all files from test.zip in c:\temp

**Szipw -e test.zip c:\temp**

This will create test.zip then add all \*.bat files from c:\

**Szipw -a test.zip c:\\*.bat**

This will create test.zip then add all \*.bat files from c:\ and all it's sub-directories

**Szipw -ar test.zip c:\\*.bat**

This will create a:\test.zip then add all \*.bat files from c:\ and all it's sub-directories, spanned across several diskettes and keep szipw opened.

**Szipw -ar&s test.zip c:\\*.bat**

See Also

[How does it work](#)

## Compressing files

To compress files, you must open or create an archive.  
Then click use the [Add files](#) or the [Add files with list](#) functions.

You must then set the different options like [Freshen](#), [Update](#) etc...

see also

[Expanding files](#)

## Exe files

Szipw supports Self Extracting Zip files. To make an EXE zip file, you must have a valid Zip file opened, then run click on 'ZipToExe' from the Archive menu.



## Expanding files

Once you have opened a zip file, you can expand the files it contains, by selecting the directory where files must be extracted then click the right mouse button in the ZipFile Tree, then choose 'Extract' to expand files in the Extract directory.

see also

[Compressing files](#)

## Extract directory

The extract directory is set in the 'Extract' section, select the 'Extract' tab, then choose the directory where files are to be extracted.

See also

[Compressing files](#)

## File mask

A file mask is a set of wildcards (\*.\*), szipw accepts several file mask at one, but they must be separated by a semi-colon. ex:(\*.txt;\*.exe)

## Freshen

Freshen check if the file is part of the Zip file and if the file to add is newer than the file in the Zip file.

see also

[Update](#)

## Update

Update, will add any file that is newer, or is not part of the Zip file.

see also

[Freshen](#)SZIPW320013

## How does it work

Szipw is very easy to use, just click the right mouse button on the 'Dir/Files tree' and click the appropriate command , or drag files on the zip file outline. You can also run Szipw from a batch file, from a DOS Windows or from a shortcut see the [Command line options](#) for more information.

see also

[Registering](#)

[Bug reports](#)

[Opening a Zip File](#)

[Compressing files](#)

[Expanding files](#)

[Backup links](#)

## New archive

When you create a new archive, you are prompted to choose a filename for the new zipfile. If the file exists, it is overwritten.

see also

[Opening a Zip File](#)

## Opening a Zip File

To open a Zip file, select it in the Open dialogbox and press OK.

see also

[Compressing files](#)

[Expanding files](#)

[New archive](#)



## Recompress

Recompress allow you to recompress the entire Zip file, using a different level of compression and a different password.

see also

[Compressing files](#)

[Expanding files](#)

# Shareware

ASTEC Shareware

Szipw is distributed as Shareware - you should have received it free of charge (or at most have paid for its delivery) so that you can see if you really like it before you pay for it.

Szipw is not free or public domain, it is not a broken demonstration or Lite version of something else. It is fully function, commercial software that we have chosen to sell by the try before you buy method. We trust you to pay for Szipw just like a shopkeeper would trust you to pay for any other package before leaving the store. If you don't want it, please put it back on the shelf!

If you install Szipw and continue to use any of it as part of the way you work for over four weeks, you must either pay for it or stop using it.

see also

[Disclaimer](#)

[Registering](#)

[Contacting ASTEC](#)

## Span disks

You can create a Zip file that will be spanned across as many disks as needed.

In the Add section, select 'Span Disks' option, Szipw does not currently format diskettes, you will have to format them before compressing files.

see also

[Compressing files](#)

[Expanding files](#)

## **Speed search**

Speed search can be accessed by typing text in the Speed search control (under the Outline control). Text is searched as you type it in, from the beginning of the archive. To find the next matching name, press F3 or click Find Next in the menus.



