

FileMaster Index

FileMaster is a file management utility with lots of features to help you organize you systems. It allows you to use the latest technology to manage your Windows 95 and Windows NT 4.0 machine.

What Is? ...

[New features of FileMaster?](#)

[What is the middle window for?](#)

[What does the green and blue bar mean?](#)

[Registration Fee?](#)

[Revision History?](#)

How To...

[Open a FTP Client](#)

[Copy Files to and from an FTP Client](#)

[Use automatic directory sizing](#)

[Add a new Command Button](#)

[Add a Bookmark](#)

[Report Bugs](#)

[Contact Creative Designs](#)

Index...

[Directory windows](#)

[Command windows](#)

[Command buttons](#)

[Bookmarks](#)

This help file is still being developed. If you find any errors please report them to Creative Designs

FileMaster Features

The following features are in build 1.0.12:

- (1.0.12) [FTP Support](#)
- (1.0.12) [Automatic Directory Sizing](#)
- (1.0.12) Directory comparisons
- (1.0.11) [Customizable commands](#)
- (1.0.11) [Hard drive Bookmarking](#)
- (1.0.11) Windows95 Shell support

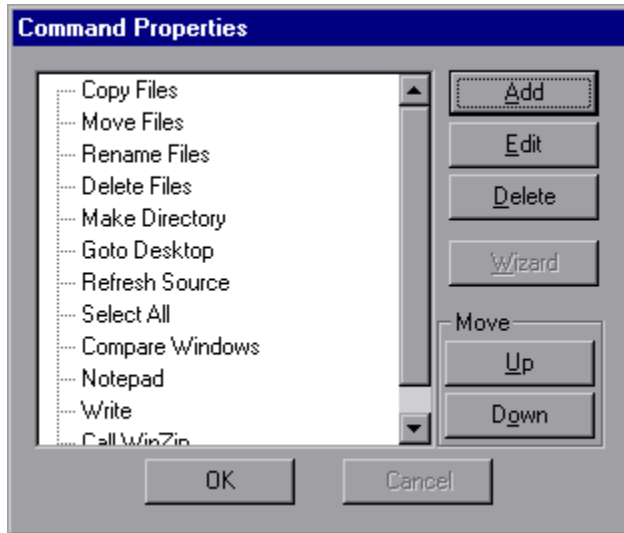
FileMaster is a program to use the latest technology from the Windows operating system to make you file management easier. If you have any suggestions that you would like to see a feature in FileMaster, please contact [Creative Designs](#).

To see how FileMaster has evolved, look at the [Revision History](#).

Custom Commands

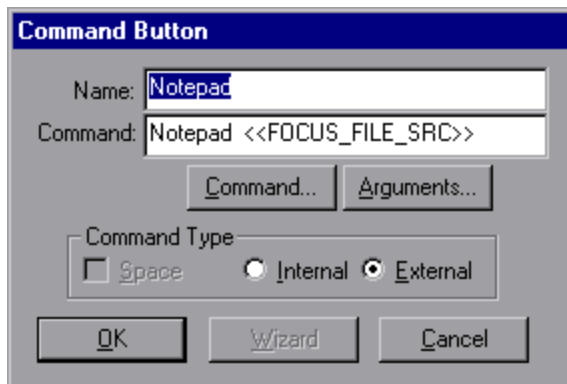
Opening the Command Properties Window

- Select or open a command window.
 - Select 'Properties' from the 'Edit' Menu
- OR
- Right mouse click in the command window and select 'Properties'



Adding a New Command

- Click on the 'Add' button.
 - Enter a name
- For External commands:
- If the command is external, like 'Notepad.exe' select 'External' from the Radio Buttons.
 - Click on the 'Command' will allow you to 'Browse' your hard drive for the executable file you want as your command.
 - Select 'Arguments' for a list of arguments that will be passed into the program. For a list of arguments and what they do, see list below.
- For Internal commands:
- Select 'Internal' from the Radio Buttons.
 - Click on the 'Command' will show you a list of commands you can choose from.



Internal Commands

COPY Copy all the selected files from the source window to the destination window.

DELETE	Delete all the selected files from the source window.
RENAME	Rename all the selected files from the source window.
MOVE	Move all the selected files from the source window to the destination window.
MAKEDIR	Make a directory in the source window.
ROOT	Goto the desktop in the source window.
REFRESH	Refresh the source window.
SELECT ALL	Select all the files in the source window.
COMPARE	Compare the source window and the destination window. Files that are different have the name **< FILE_NAME >** Files that are missing have the name !< FILE_NAME >!
REFRESH_ALL	This will refresh all directory windows.

External Command Arguments

SEL_FILES_SRC	All the selected files in the source window. Ex. Run.EXE c:\Autoexec.bat c:\io.sys
SEL_FILES_DST	All the selected files in the destination window. Ex. Run.EXE c:\Autoexec.bat c:\io.sys
FOCUS_FILE_SRC	The file with the focus rectangle in the source window. Ex. Run.EXE c:\Autoexec.bat
FOCUS_FILE_DST	The file with the focus rectangle in the destination window. Ex. Run.EXE c:\Autoexec.bat
PATH_DST	The path of the source window. Ex. Run.EXE c:\
PATH_SRC	The path of the destination window. Ex. Run.EXE c

Command Windows

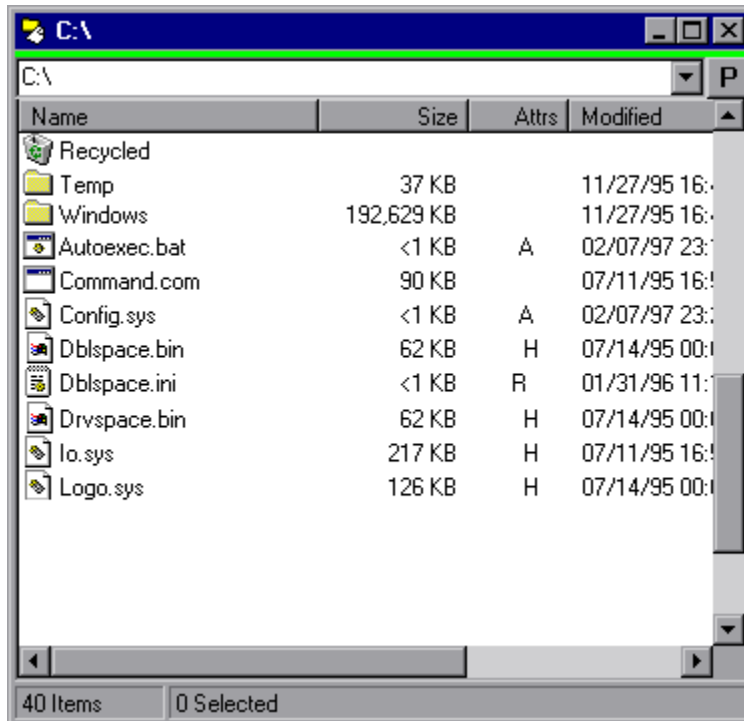
Command windows allow the user to make any program a button that can open the files in the Directory Window. You can open any type of file with notepad or binary editor.

When adding a button you can specify arguments for the program to accept.

You can have multiple command windows that contain multiple commands.

Directory Windows

Directory windows display a file system in a navigational report view. The user can double click on a directory to enter it, or double click on a file to execute it. The user may also drag and drop file to and from the Directory Windows.



Window Roles

The green or blue bar represent the role the window plays.

The **Green bar** is the Source window.

The **Blue bar** is the Destination window.

The Source and Destination windows are used with the command window. When the command 'Copy' is used, it will copy a file from the Source to the Destination.

The Edit Box

The edit box allows you to enter in a path quickly and easily. Just type in the path and press ENTER. This will read that directory. The dropdown will show all the paths you typed in, this allows you to quickly go from path to path. When your viewing a common directory, bookmark it for easy access.

FTP Services

The directory window can also show the contents of an FTP server. Just type in "ftp://" followed by the address into the edit box. This will view the FTP server.

Ex. ftp://ftp.myserver.com

Bookmarking

You can bookmark any directory one on your local machine or FTP server.

Directory Sizing

If the option for directory sizing is on, then when you enter a directory, it will begin the size it.

Related Topics

[Bookmarks](#)

[Directory Sizing](#)

[FileMaster Options](#)

[Command Window](#)

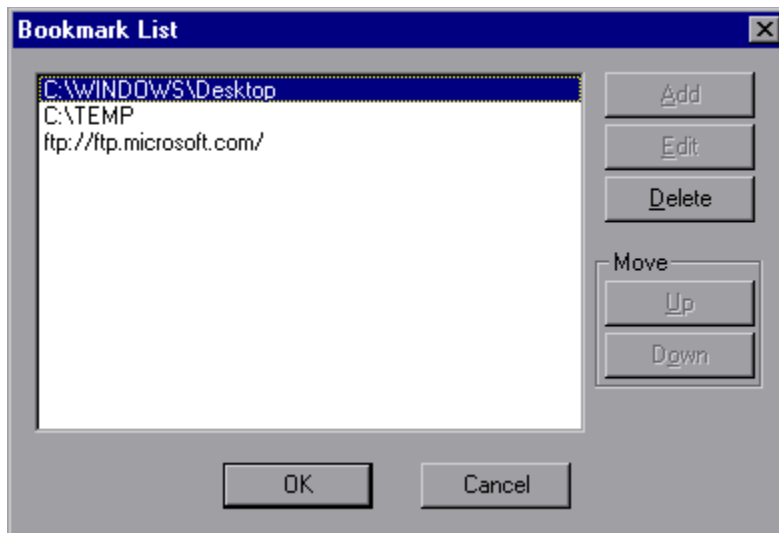
Using Bookmarks

Adding a bookmark

- Select the Directory Window that has the path you wish to bookmark.
- Select 'Add Bookmark' from the 'Bookmark' menu.

Editing bookmarks

- Select 'Edit Bookmarks...' from the 'Bookmark' menu.



Select the bookmark you wish to remove and click on the delete button. This will remove the bookmark from the list.

Select OK when finished, or Cancel to abort the operation.

NOTE: The delete command is the only functioning command on this window. New features are going to be added in the future.

Related Topics

[Directory Window](#)

Sending Feedback to Creative Designs

To contact Creative Designs or Ben Owen:
e-mail: bowen@filemaster.com
World Wide Web: <http://www.filemaster.com>
snail-mail:

Ben Owen
5852-F Post Corners Tr.
Centreville VA, 20120



The FileMaster registration fee is \$10. After the 30 day evaluation features will stop working. Send your registration fee of \$10 in check format to the address above. Please make all checks payable to Ben Owen.

Or you may use FileMaster directly, by selecting 'Send Comments...' from the 'Tools' Menu.

Thank you for using FileMaster.

FTP Support

Now from FileMaster you can access FTP sites from all over the world, just like it was your own hard drive.

To login into a FTP service type in 'ftp://' followed by the FTP server's name.

e.x: "ftp://ftp.microsoft.com"

If FileMaster connects it will ask you to enter in a user name and password. If you do not have one some sites will let you use the user name "anonymous" with the password being your e-mail address.

e.x: "User: anonymous"
"Pass: joe@email.com"

Use the directory window as normal, double clicking on folders to enter them, parent button to parent out of them. To copy files to and/or from the FTP server, you must have the 'Copy' command on your command window. Without this button you will not be able to copy files to or from the FTP server.

BUILD 12 NOTES: Drag and drop and Rename support are not implemented. These will be enabled in build 13.

FTP Transfers

Copying

To copy a file from a server or to a server, select the files and click on the Copy button in the command window.

Moving

To move a file from a server or to a server, select the files and click on the Move button in the command window.


Deleting

To delete files from a server. select the files and click on the Delete button in the command window.

NOTE: Renaming is not yet implemented.

Directory Sizing

Directory sizing occurs when you enter a directory.

To stop the directory sizing click on the  button.

To start the directory sizing again click on the ■ button.

Revision History

Version 1.0.12

- Added in new directory column "Attr" to show attributes.

- Made the program more responsive.

- Added automatic directory sizing.

- First version of FTP support.

- Allowed a Directory window save it's default path. So the window will open with the user defined path.

- Cleaned up various parts of the program.

Version 1.0.11

This was the first major release of FileMaster. All previous versions were internal releases.

These were the first features of this release:

- Support for Windows95 Shell

- Drag and drop

- File context menus

- Command buttons

- Bookmarking

Options

