



### Fonts Installation

Click on this icon for instructions on installing CD Fonts!.



### Fonts Browser

Click on this icon for a tour of the Fonts Browser.



### Types of Fonts

Click on this icon for an explanation of font types.



### Frequently Asked Questions

Click on this icon for answers to the most commonly asked questions about CD Fonts!.



### Removing Fonts

Click on this icon for instructions on removing fonts.



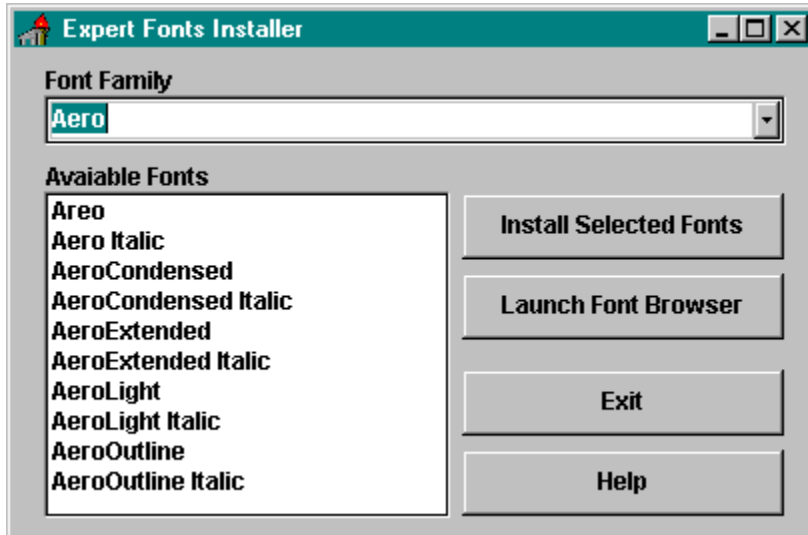
### Font List

Click on this icon for a list of the font families included in CD Fonts!.

## Fonts Installation

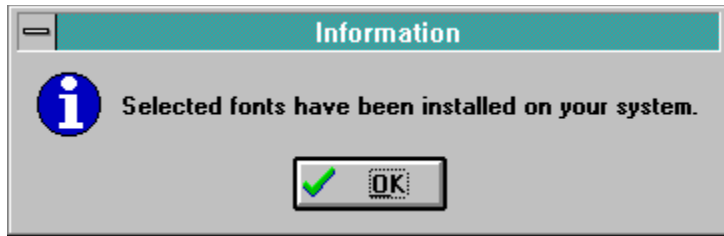
Expert CD Fonts! includes an easy to use font installer. Just click on the drop-down list box and select a Font family. All the fonts available for that family will be displayed in the larger box.

When youve chosen the fonts you want to install, select the font and then click on the **Install Selected Font** button.



To make multiple font selections, press the **CTRL** key while you click on the fonts you want to select. If you would like to see an example of the font, click on the **Launch Font Browser** button.

Please note: It is recommended that you do NOT have more than 20 fonts installed on your system at one time. Follow the Removing Fonts directions for more information on removing fonts.



[Windows 95 users: After you have installed the fonts, click on the Fonts icon in Control Panel to update the fonts folder. This should make all fonts visible in application.]

[Click here to choose font family.](#) There are over 300 font families to choose from.

These are the fonts available for the font families. Font families can have from 1 to 10 fonts.

**Click here will install all the selected fonts to your system. Please refer to Removing Fonts, to remove unwanted fonts from your system.**

**This launches the font browser. The font browser lets you preview the fonts before installing them.**

**This exits from the Font Installer.**

**This launches the CD Fonts! help file.**




## Font Browser

The CD Fonts! Browser lets you view the font styles before you load them to your system. It is strongly recommended that you do **NOT** install more than 20 fonts at once.

To see the fonts in a specific category, simply click on the font category tab at the top of the screen. The All Fonts category will display all the fonts available on the CD. Use the **Arrow** buttons to scroll through the fonts in that particular category. Click on the **Quit** button to exit from the Font Browser and return to the Fonts Installer.


Formal Fonts	Script Fonts	Display Fonts	Symbol Fonts	Novelty Fonts	Holiday Fonts
Classic Sans Serif Fonts	Classic Serif Fonts	Cutting-Edge Fonts	Fonts From Around the World	TV Fonts	All Fonts



Aero  
**ABCDEFGHIJKLMNOPQRSTUVWXYZabcdefghijklmnopqrstuvwxyz1234567890**

Agincort  
*ABCDEFGHIJKLMNOPQRSTUVWXYZabcdefghijklmnopqrstuvwxyz1234567890*

Alien Eye  
**ABCDEFGHIJKLMNOPQRSTUVWXYZabcdefghijklmnopqrstuvwxyz1234567890**



CREDITS	QUIT
---------	------

**This launches the About Box for CD Fonts!**

This closes the Font Browser and returns to the font installer.

These are the font categories. Click on a category to see an example of fonts in that category. Click on ALL FONTS to see all the fonts available in the program.

Click on these to scroll through the fonts available in the selected category. The list will repeat itself.

## Removing Fonts

A typical installed TrueType font family requires about 5 kilobytes of Random Access Memory. By family, that can mean up to four files: the plain, bold, italic and bold-italic files that correspond to the font styles. If you run Windows on a 386 or higher, and have a normal sized swap file, you should be able to load many, many fonts without experiencing a major performance penalty.

There is a problem, though: many applications allocate a relatively small amount of memory to hold the names of the fonts. For example, a well known bug in a major word processor has been affectionately called 'the pfont pfunnies.' When you use more than 255 different fonts in your open document(s), the program completely loses track and substitutes one font for another... for another... for another, and so on.

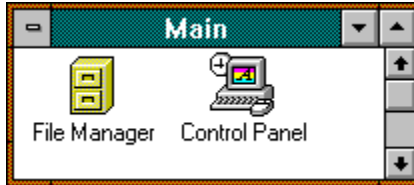
So both for system memory considerations, and for applications compatibility, sometimes it's best not to install too many fonts. If you find you need to remove a font or fonts, here's how to do it:


- [Removing fonts in Windows 3.1](#)
- [Removing fonts in Windows 95](#)

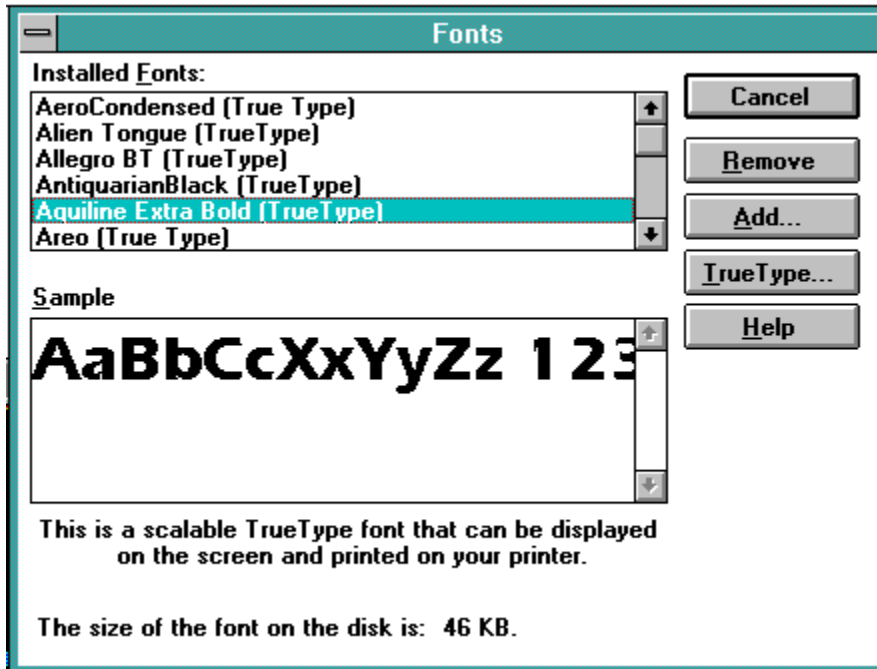
## Windows 3.1

The Fonts dialog box allows you to manage the number of fonts installed on your computer and to remove fonts you no longer wish to use. **Please note:** Do not delete the default Windows fonts.

1. Double-click on the **Control Panel** icon located in your **Main** program group.



2. Double-click on the Fonts  icon.
3. The Fonts dialog box will appear. This dialog box lists all currently installed font files.



4. Highlight the fonts to be deleted. Use the **CTRL** key on your keyboard to select more than one font to be deleted. All selected fonts will be highlighted. Click on the **Remove...** button.
5. The Remove Font dialog box will appear. Click on the **Yes** button to confirm the removal of the selected font. Click on the **Yes to All** button to confirm the removal of all selected fonts. Check the *Delete Font File from Disk* option to remove the font from the hard drive.







## Windows 95

The Fonts dialog box allows you to manage the number of fonts installed on your computer and to remove fonts you no longer wish to use. **Please note:** do not delete the default Windows fonts.

1. On the Taskbar, click on the Start  button.
2. Point to the Settings folder and finally, point to and click on the Control Panels icon.

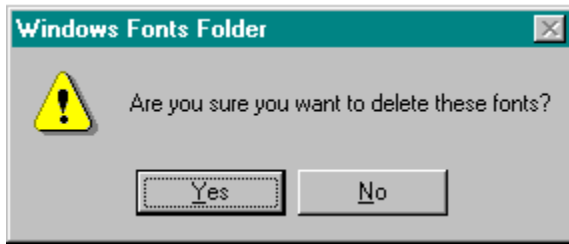


3. In the Control Panel window, double-click on the Fonts Folder icon The Fonts window will appear. This window lists all currently installed font files.



Fonts

4. Select the Font (or Fonts) to be removed from your system. Choose File-Delete. In the confirmation dialog box, click on the Yes button. The selected font(s) will be removed from your system.



5. Click on Yes to confirm the removal of the selected fonts.


## Types of Fonts

There are four basic types of fonts Serif, San Serif, Display and Script fonts.

- Serif fonts are the easiest to read, and are most suitable for long documents such as school papers and business reports.
- Sans Serif fonts are 'serious' in tone. Sans Serif fonts are best when you do not wish to distract from the message with a 'fancy' character.
- Display fonts draw special attention to a word, and create an 'artsy' effect. Decorative fonts are best for when you need to place text in a special design such as a business or club logo.
- Script fonts add elegance to your personal messages, invitations and thank you notes. These are best used for special occasions.

## Frequently Asked Questions

### How do I install PostScript fonts?

Double-click on the ATM Control Panel icon  to install the PostScript fonts. They are located in the WinPS directory on the CD-ROM under folders name after the fonts. Please note: if you do not have Adobe Type Manager you cannot install PostScript fonts.

### Microsoft Works for Windows wont display all my fonts. Why?

MS Works allocates only 10 kilobytes of RAM for remembering the names of all the fonts installed in the system. If you have many, many fonts, ALL the font names will disappear from the font list. The only advice Microsoft offers to users with this problem is delete fonts you don't use or copy the fonts to disk and use them only when you need them.

### None of my fonts show in any of my applications. How can I fix this?

Most likely the True Type option is turned off. To check, open the Control Panel, choose the Fonts icon, and select the True Type button. Be sure there is a check in the 'Enable True Type Fonts' box. If not, click in the blank square and click OK. You will then be prompted to restart Windows for the changes to take effect.

### Why do all the fonts look the same?

Windows normally won't tell you when you have too many fonts being loaded at start-up. However, when loading an excessive amount of fonts from various resources, some fonts might begin to show as the same generic font. When this happens, you have exceeded the amount of fonts (literally hundreds) that your computer can handle. Delete the fonts you don't use, or store them on disk and use them only when needed.

### I have installed the TrueType fonts in Windows 95 and I cannot find them in my word processor.

After you have installed the fonts, click on the Fonts icon in Control Panel to update the fonts folder. This should make all fonts visible in application.

### Im having problems with WordPerfect for Windows since I installed fonts.

WordPerfect offers you a choice of two completely different print drivers. The default is the WordPerfect driver. The WordPerfect driver uses only WP fonts -- not True Type fonts. To use True Type fonts with WordPerfect for Windows, you must use the Windows Print driver as configured in the Control Panel under Printers.

## Font List

This is a list of the font families which are included in CD Fonts!. Please note that some families have more individual font varieties (i.e., bold, condensed, extended etc.) than others. To see an example of each of the font families listed, click on the Launch Font Browser button on the Font Installer Applet.

Aero	Agincort	Alliance	Amplif	Anscript	Aquiline
Argonaut	Average	Avguard	Avquest	Bandstnd	Baphomet
Baskrton	Berliner	Bigdaddy	Blox	Blueprnt	Bubblsft
Bucknghm	Capelli	Cargo	Carnegi	Cash	Cathedrl
Centrcty	Century	Certific	Chainlnk	Chestnut	Chilipep
Chunkmnk	Circulsw	Circus	Cltype	Coctails	Contemp
Copprfld	Corpcond	Corpmono	Corprnd	Corscrt	Crayon
Creeper	Crgothic	Cruiser	Cybspeak	Datecond	Dateline
Dembones	Descrpt	Detectiv	Digitmac	Discript	Domenic
Doncasul	Draftplt	Duncan	Enchant	Eros	Erosion

Etema	Excheqr	Fatso	Felicia	Fisheramn	Flashbck
Fluf	Freckle	Freeport	Frenchb	Fritzer	Futucd
Gabriel	Galaxy	Garamcl	Garamex	Garashck	Garret
Gatsby	Gazette	Gengisk	Gettysb	Ghostmac	Ghosttwn
Gibraltr	Goldrush	Grain	Grant	Grinder	Guthrie
Hebrew	Hotair	Hypestyl	Industrl	Inkeeper	Jade
Jewel	Jiffy	Joullrd	Kane	Katrina	Keyboard
Kingfrsh	Knomen	Kurtz	Lalique	Lettergo	Libgoth
Libgothh	Lifetime	Logcabin	Lounger	Loveltrs	Lushlife
Maidword	Manhattn	Manscrpt	Marlowe	Mature	Metalcut
Metalenc	Mexacali	Microa	Midages	Mikity	Mixup
Mkultra	Moonwlkr	Nativid	Nebula	Neon	Newhamp
Newyorkd	Nibbles	Nuts	Nuwave	Obelisk	Odyssey
Oldcntry	Orator	Oxford	Padua	Paintbrs	Penwin
Pica	Pilgrim	Pittsbrg	Placecrd	Prehist	Prestige
Princeal	Prophet	Punchlbl	Quartrbk	Quasar	Quetzctl
Raskin	Readout	Remus	Ribbons	Rockland	Romanm
Romulus	Saddlebg	Sandcstl	Scorpion	Scriptm	Shakazul
Simplcty	Simptype	Singapre	Snfu	Spaceivy	Spaceout
Splthare	Spunk	Stegosrs	Stenclst	Stgcoach	Stimpson
Sunsplsh	Swampter	Swan	Sweez	Swordman	Talon
Techschl	Templar	Thirdgen	Thorns	Thornton	Tinkert
Tophat	Topsecre	Unique	Univornt	Venom	Vertigo
Vienese	Wallstrt	Walters	Wascrypt	Wasmetro	Weissach
Wizzard	Wrinklct	Write	Wurker	Zenon	Zingba
Zorba					

