

# Getting the Best Image With Your Grayscale QuickCam

[Getting the Best Image](#)

[Getting the Best Frame Rate](#)

[Adjusting Camera Settings](#)

[Adjusting the Image Size and Quality](#)

[Contacting Connectix](#)

## Getting the Best Image

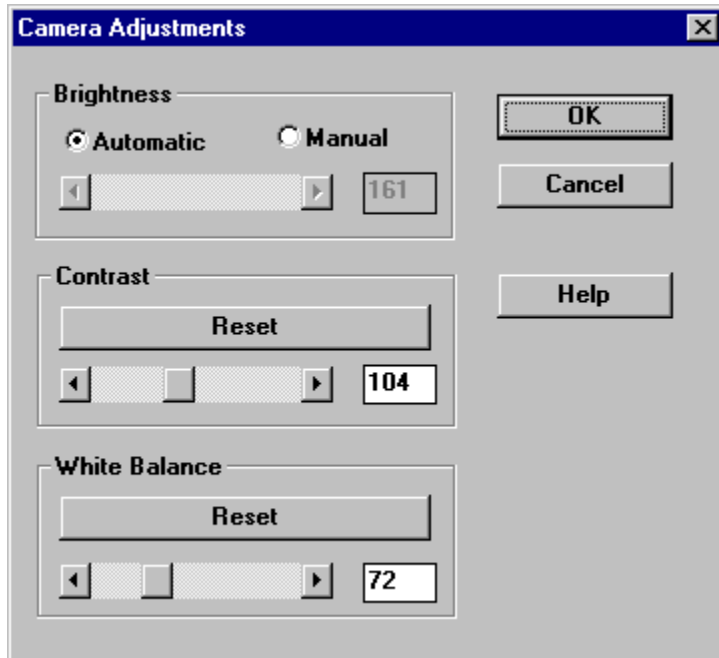
There are two steps to getting the best image for QuickPICT and QuickMovie. First, make sure that you have enough light on the scene. All of the other image adjustments depend on the presence of an adequate amount of light. As a rule of thumb, if the lighting is such that you would use a flash with a normal 35mm camera, you need to add more light for your QuickCam. This is probably true in most home environments where illumination is provided by one or a few lights.

Once you have enough light, use the [Camera Settings](#) dialog to fine-tune your image.

## Camera Settings

To adjust the image, choose Camera Adjustments from the Settings menu in both QuickPICT and QuickMovie.

The Camera Adjustments dialog will appear as shown below.

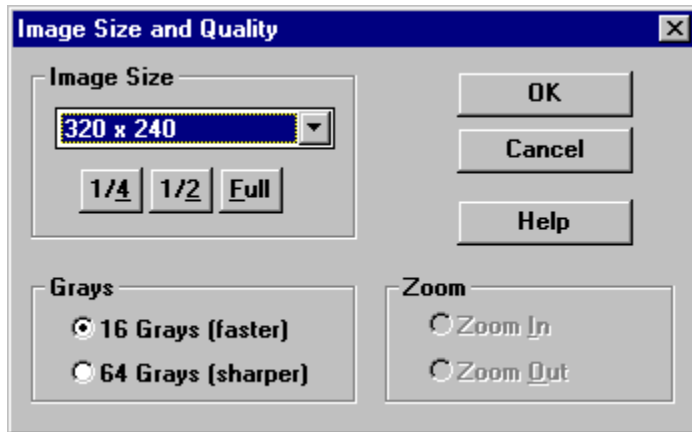


To adjust the brightness of the image, use the Brightness and White Level sliders. If you choose Auto Brightness, QuickCam will adjust both of these values automatically, and their respective sliders will be grayed-out.

- [Brightness](#)
- [Contrast](#)
- [White Balance](#)

## Image Size and Quality

To adjust the size and quality of the picture, choose Image Size and Quality from the Settings menu. The Image Size and Quality dialog will appear as shown below.



You can adjust the following values:

- [Image Size](#)
- [Color Depth](#)
- [Zoom](#)

## Getting the Best Frame Rate

Maximizing the frame rate is important in many situations, especially if you are using your Color QuickCam for videoconferencing. Here are some tips for increasing the frame rate.

- The most important factor in getting the highest possible frame rate is having enough illumination. The less light there is, the longer the shutter will have to stay open to capture each frame, and subsequently the lower the frame rate. Simply by increasing the light level, you can decrease the necessary shutter speed (the [Brightness](#) setting) and increase the frame rate.
- Choose a smaller image size. Capturing a smaller image size results in faster frame rates.
- Make sure QuickMovie is the only application running. Close all other applications.

## **Contrast**

The Contrast slider controls the amount of contrast of the image. Click Reset to set the contrast to the default setting.

## **Brightness**

The Brightness setting is like shutter speed on a camera — the higher the Brightness setting, the longer the shutter is open, and the more light it lets in. You can set the brightness manually, or you can choose to have it set automatically.

If the shutter is open for too long, you may see blurring of the image. In that case, you should add more light to the scene so you can choose a lower brightness setting (lower shutter speed). You may have to experiment with this setting if you use your QuickCam under different lighting conditions.

## White Balance

The White Balance setting adjusts the amount of white to black for your camera and surrounding lighting.

- If the picture looks washed out or consists solely of whites and light grays, move the white balance slider to the left to lower the amount of light reaching the camera.
- If the picture looks dark or consists solely of dark grays and blacks, move the slider to the right to let in more light.

The White Balance is set correctly when the picture covers the spectrum fully from black to white with a wide range of grays in between.

**NOTE:** If you will not be moving the QuickCam from place to place, you should only have to set the White Balance once. If you move the camera to another location, you may need to reset the White Balance for the new location.



## **Image Size**

The smaller the image size, the more lifelike the motion of your QuickCam movies. Image size is calculated in pixels. To set the image size, click one of the preset buttons (1/4, 1/2, or Full), or by choosing another size from the drop-down menu.

## **Color Depth**

This is the number of shades of gray that the camera will capture.

- To capture video more quickly, choose 16 grays.
- For a sharper image, choose 64 grays.

Generally, you should only use the 64 grays option for faster computers.

## **Zoom**

- To magnify the image, choose Zoom In. You cannot increase the magnification if you have chosen an image size of 320 x 240 pixels.
- To restore the image to its previous magnification, choose Zoom Out.

## Contacting Connectix

In the unlikely event that you have a problem with the QuickCam hardware, or with the software supplied by Connectix, please read this section first.

### Contacting Connectix Support

If you have questions or problems with QuickCam, contact us by telephone, by fax, or via electronic mail. Try the following first:

- Check the ReadMe file. This has information on known problems and solutions.
- Write down the events that lead to the problem. Have you changed anything in your computer recently?
- Have the following available when you contact Technical Support:
- Registration number on the Registration Card
- Software version number on the installer
- PC model
- Windows version
- How much RAM is installed

Connectix Technical Support can be contacted at the following online services:

Online Service	Mail Address	Forum Location
America On-Line	Connectix	Keyword = Connectix
CompuServe	75300, 1546	Go CONNECTIX

You can also contact us on the World Wide Web, or by e-mail, fax, or phone:

WWW: <http://www.connectix.com> for general Connectix information  
E-mail: [cqcwsupp@connectix.com](mailto:cqcwsupp@connectix.com) (Color QuickCam)  
[qcwsupp@connectix.com](mailto:qcwsupp@connectix.com) (Grayscale QuickCam)  
Fax: 415-571-5195  
Phone: 415-571-5100  
800-650-8857 (US and Canada only)

### Contacting Connectix Sales

Contact Connectix Sales for more information about QuickCam volume sales , QuickCam for Macintosh, or other Connectix products.

Internet: [sales@connectix.com](mailto:sales@connectix.com)  
FAX: 415-571-5195  
Phone: 800-950-5880 or 415-571-5100 (Sales only)

### Contacting Connectix Support in Europe

Country	Telephone Number
Germany	0130-823887 (toll-free)
France	0800-917943 (toll-free)
Britain	0800-966199 (toll-free)
Holland	20-5814384

For all other European countries, dial +31-20-5814385. This number is in Holland, however information will be provided in English.

### European Addresses

Mailing: SEI, Attn: Connectix, Orlyplein 85, 1043 DS Amsterdam, The Netherlands  
FAX: Fax questions to: +31-20 581 4380

Internet: For e-mail use the internet address:  
CONNECTX@SEI.NL.SYKES.COM

