

SunShine

Windows Tutor and Reference

Copyright (c), 1993
by Chet Langin
All Rights Reserved

No warranty is expressed or implied.

Langin Software
532 W. 3rd St.
Centralia, IL 62801-5407 USA
618-532-4899
Internet: 73770.615@compuserve.com

Table of Contents

Introduction	Page 3
Try Out SunShine	Page 4
Installation	Page 5
Using SunShine	Page 7
Troubleshooting	Page 8

Introduction

SunShine is a Windows tutorial and reference. It is not just about Windows--it is about computers, in general. However, it requires Windows to run.

The tutorial includes a section "For Absolute Beginners." It is not for dummies, but, rather, for intelligent people who simply need basic information presented in an efficient way. "The Visible Window" shows and explains the components of a window in a graphical way.

The best long-term use of SunShine is its hypertext glossary, which explains words, phrases, and acronyms. Unlike a normal dictionary, which may use complicated words to describe other complicated words, the SunShine glossary includes hot spot definitions inside other hot spot definitions. You can get the depth of explanation--or lack of it--that you, personally, need.

If you have the registered version of SunShine, then ZipHelp is included. PKZIP is a jewel of a program that can be used to back up and organize disks and save disk space, as well as just transporting shareware programs. ZipHelp will help you learn how to do it. You must acquire PKZIP separately.

The best thing about SunShine is that its glossary is growing monthly with the latest buzz words being used by computer professionals. Keep up to date--with SunShine!

Try Out SunShine

You do not have to install SunShine in order to try it out. You can run it from any directory or from a floppy disk. Here are some ways of doing it.

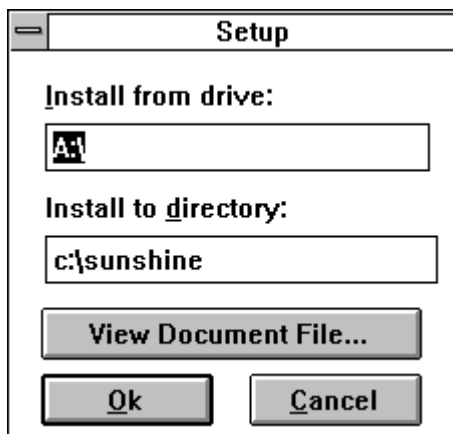
1. From the DOS prompt, enter **win sunshine**. Windows will be loaded, and the SunShine program will run.
2. From the Windows File Manager. Double-click on the file SUNSHINE.EXE.
3. From the Windows Program Manager, Run SUNSHINE.EXE.

The advantage of this is that you can try out SunShine quickly without much muss or fuss. The "disadvantage is that the SunShine icon is not installed in the Windows Program Manager.

Installation

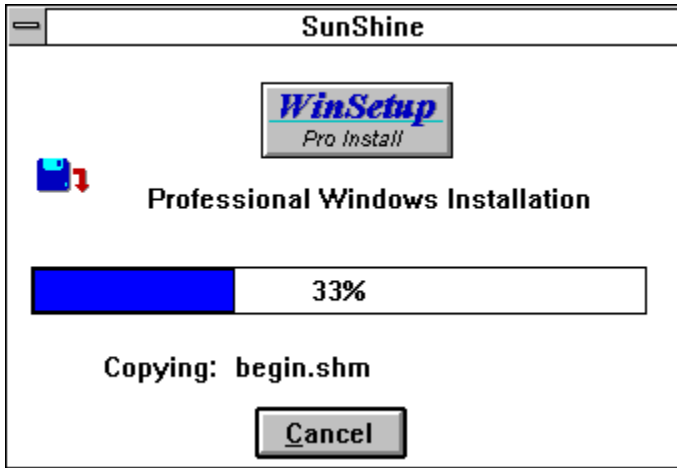
The Setup program distributed with SunShine is used to install the SunShine program and related files. The Setup program does the following:

1. It displays a text file with information about the installation process.
2. It displays a dialog box that addresses three issues (see illustration below): (A) It shows where the files will be copied **from** and where they will be copied **to**. You can change either one. (B) It displays a button that says "View Document File..." If you select this button, you will see this SunShine manual displayed on the screen. (C) It shows buttons for "Ok" and "Cancel". If you select "Ok", the installation process will proceed. If you select "Cancel", the installation process will not proceed.

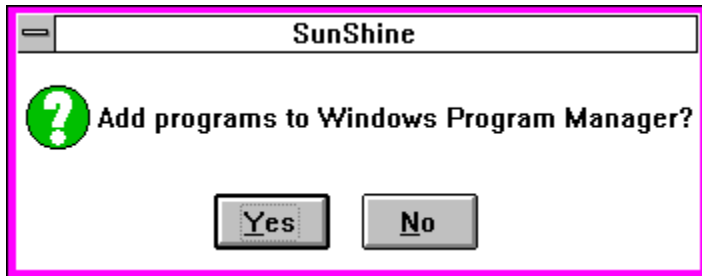


3. It creates the directory specified above, if it does not already exist, and copies the program and related files to this directory. If the files already exist, you will be prompted if you want them replaced. Answer "yes".

The illustration below shows the dialog box that appears while the setup program is working. It shows that **begin.shm** is the file that is currently being copied and that the installation process is 33% completed.



Once the files are copied to the appropriate directory, the following dialog box asks you if you would like SunShine added to the Windows Program Manager. What this means is that the SunShine icon will be added so that you can start the program by selecting its icon. The recommended answer is "yes".



Once installed, the SunShine icon looks like this:



Using SunShine

When you start SunShine, it looks somewhat like the illustration below. All you have to do is follow the directions on the screen. You will be able to exit at any time by selecting "File" and "Exit" from the overhead menu.



SunShine Copyright © 1993 by Chesapeake. All rights reserved.
www.chesapeake.com
It's worth a copy of the book.



For Absolute Beginners: You may begin reading SunShine just like you would a book. To get through the pages, click on a page number on the image of the SunShine book on the left and click a mouse button (if one mouse button doesn't work, try another one). Don't worry you can come right back where you want to.



For Everybody Else: Select the 'SunShine' image on the left to see a Table of Contents.

Troubleshooting

SunShine is a collection of several files. If you get a "Help File not found" message, then it means that Windows was unable to find one of the files. Check the PACKING.LST file to make sure that all of the files are in the appropriate directory.