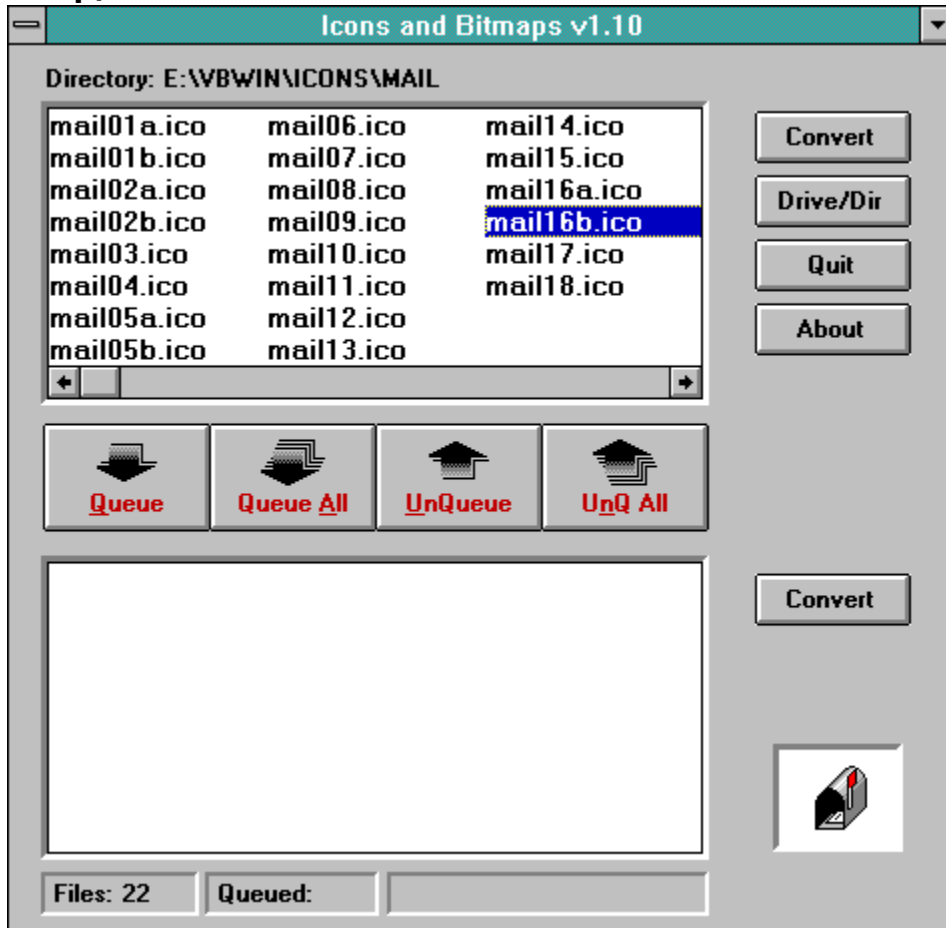


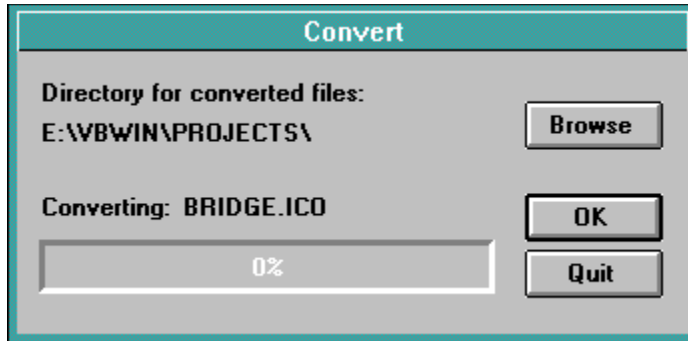
# Icons and BitMaps v1.10 (Click a command button to get context help)



## Convert

If the current focus is on the main listbox, conversion is done on the currently selected (i.e., highlighted) file. If the current focus is on the queue listbox, conversion is done on all files in the listbox.

The Convert command brings up the Convert dialog box as pictured below:



### Browse

Used to change the directory where converted (i.e., BMP) files will be written to. The Browse command calls the Drives/Directories dialog box to facilitate choosing a drive and/or directory.

**Note:** Changing the drive and/or directory here does not change the currently logged drive and/or directory

---

### OK

Proceed with the conversion of the selected file or files.

### Quit

Quits the conversion and hides the Convert dialog box.

## **Drive/Dir**

Drive/Dir is used to change the currently logged drive and/or directory.

This Drive/Dir command calls up the Drives/Directories dialog box to facilitate choosing a new drive and/or directory.

**Quit**

Quits the application.

## **About**

Brings up a dialog box about **Icons and BitMaps v1.10**, its author, and a disclaimer.

## **Queue**

Queues selected file. When a file is queued it is moved from the main listbox to the queue listbox. This command is available only when the current focus is on the main listbox and there are files in the listbox.

## **Queue All**

Queues all files in the main listbox. When files are queued, they are moved from the main listbox to the queue listbox. This command is available only when the current focus is on the main listbox and there are files in the listbox.

## **UnQueue**

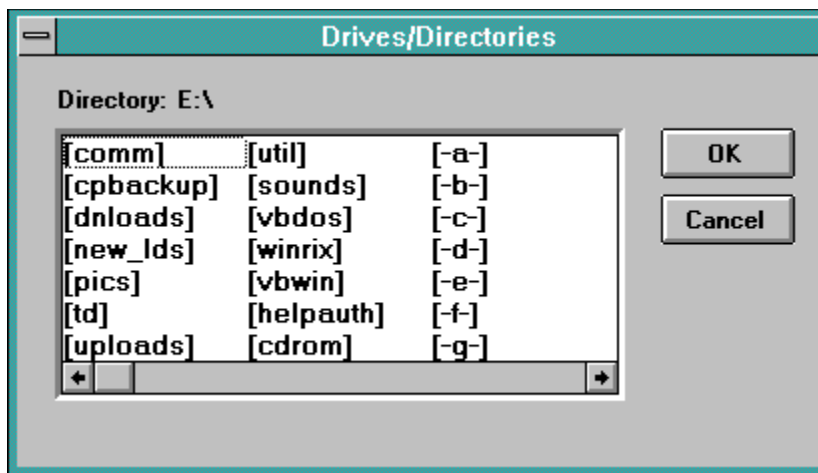
Unqueues selected file. When a file is unqueued, it is moved from the queue listbox to the main listbox. This command is available only when the current is on the queue listbox and there are files in the listbox.



## **UnQueue All**

Unqueues all files in the queue listbox. When files are unqueued, they are moved from the queue listbox to the main listbox. This command is available only when the current focus is on the queue listbox and there are files in the listbox.

## Drives/Directories Dialog



The Drives/Directories dialog box facilitates choosing a drive and/or directory in parts of the application.

Your currently logged disk or drive wont take effect until you choose the OK command button. Choosing Cancel exits the dialog and reverts the current drive/directory to when the Drives/Directories dialog was called.

If the Drives/Directories dialog is called by the Browse command, the dialog wont change your currently logged drive and/or directory. Instead, it returns the drive and/or directory designation to the calling dialog box (e.g, the Convert dialog box).

**Focus**

When a form or control has focus, it receives the current user input.

## **Icon Display Box**

The Icon display box displays the currently selected icon file. The box can be toggled to display the icon to fill the box or to display it as its actual size. To toggle, double-click on the displayed icon.

