

Contents

PEEPER (Shareware and Registered Version Help)

Introduction

Note: If your already Registered

How to Use the Program

Registration Infomation **(e.g. How to Order)**

System Requirements

What is Shareware

Getting Support and Help

Copyright Notice

Introduction

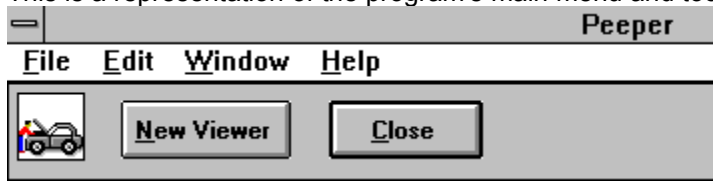
Peeper includes the following functions.

- Powerful file viewer capable of displaying over 20 different file formats. See [List](#).
- Launch Programs
- Launch Documents by launching the program that controls the document with it pre-loaded.
- View Version information See [Example of Version Information](#).
- View File Dependencies See [Example of File Dependencies](#).

How to Use the Program

Use the mouse to select specific information about each screen element from the graphics below. Simply click once where you see the mouse pointer change to a pointing finger.

This is a representation of the program's main menu and toolbar.



Primary View Window

Registration Information

See [Ordering Information](#)

Features and benefits of Registered Version:

- Elimination of all references to registration and other "nag" screens.
- Additional updates, corrections and bug fixes implemented after the release of the shareware version.
- You will be alerted to new releases when available.
- You will also receive a diskette containing the shareware version of Fineware's Nationally known Windows utility **Space Hound**. **Note:** See [Space Hound Information](#)

Ordering Information

Registration for **PEEPER** is **\$22.95** You may either pay by check, money order, or via credit card.
Credit cards accepted: **Visa, MasterCard** or **American Express** [Read This.](#)

Via FAX **Direct** from Fineware. (405) 942-7819
Via e-mail **Direct** from Fineware.

E-Mail Addresses

Al Meadows - Fineware Systems

CompuServe.....70650,2022

Prodigy.....BBTK05A

America Online.....VB AL

Note: Internet Email is **not** recommended for credit card orders.

Order Form **Direct from Fineware** using US Mail

Available: Visa, MasterCard, American Express, Check or Money Order

See Site License Ordering for multi-unit sales.

Ordering Online via **CompuServe SWReg Service**

Available: Conveniently billed to your CompuServe Account

PsL Ordering Information **Credit Card Orders ONLY**

Available: 800 Number, Fax, MasterCard, Visa, Amex, or Discover

See About PsL

Order Form

PEEPER Ver 1.12

Note: Select "File-Print Topic" from the menu bar to *print* this form.

You can order **PEEPER** mail with payment by *check* , *money order* or *credit card*.

Name: _____
Company: _____
Street: _____

Street: _____
City: _____
State: _____ ZIP: _____
Country: _____
Telephone Number: _____

Credit Card Type: Visa MasterCard American Express
(circle one)

Credit Card Number: _____

Expiration Date: _____

Signature: _____

(Unless otherwise requested we ship a 3.5" HD disk)

Peeper	\$22.95	_____
Oklahoma residents add 8.375% sales tax		_____
Shipping/Handling - US or Canada	\$2.00	_____
Shipping/Handling - Outside of US/Canada	\$4.00	_____

Total in US Funds drawn on a US Bank _____

Make checks payable to: Fineware Systems

Mail to:
Fineware Systems
P.O. Box 75776
Oklahoma City, Ok. 73147

By the way, where did you initially hear about **PEEPER**?
_____ (If CompuServe, which forum)

Disk Drive Combo Box Control

Use this control to select the desired disk drive. This will show the current default directory location in the Directory Tree listbox for the selected disk drive when changed.

Directory Tree Listbox

Directory listing on selected disk drive. Use the mouse to select a specific directory. This requires a Double_Click of the left mouse button. You must select the directory (using the double_click) before the files displayed in the Files ListBox will show the correct entries for that directory.

Double_Clicking also expands the directory structure to show sub-directories if any exist.

Files Listbox

Listing of all of the designated file types which are located within the currently selected directory. You may use the Mouse (single_click) or the arrow keys to select a specific file. This triggers the program's file viewers and inspection routines. The internal version and identification information will be displayed in the Version Info List.

Program Icon

This will display the program's About screen when Double_Clicked with the mouse.

Currently Selected File

Complete path to the current file that is being displayed.

Close Button

Pressing this button with the mouse terminates the program.

Print Button

Note: This is only available when the file being displayed contains embedded version information.

Pressing this button with the mouse sends the contents of the Version Information List to the current default printer.

You will then have an option of printing only the currently highlighted file information or all information from files in the currently selected directory.

Definition of Shareware

Shareware distribution gives users a chance to try software before buying it. If you try a Shareware program and continue using it, you are expected to register. Individual programs differ on details -- some request registration while others require it, some specify a maximum trial period. With registration, you get anything from the simple right to continue using the software to an updated program with printed manual.

Copyright laws apply to both Shareware and commercial software, and the copyright holder retains all rights, with a few specific exceptions as stated below. Shareware authors are accomplished programmers, just like commercial authors, and the programs are of comparable quality. (In both cases, there are good programs and bad ones!) The main difference is in the method of distribution. The author specifically grants the right to copy and distribute the software, either to all and sundry or to a specific group. For example, some authors require written permission before a commercial disk vendor may copy their Shareware.

Shareware is a distribution method, not a type of software. You should find software that suits your needs and pocketbook, whether it's commercial or Shareware. The Shareware system makes fitting your needs easier, because you can try before you buy. And because the overhead is low, prices are low also. Shareware has the ultimate money-back guarantee -- if you don't use the product, you don't pay for it.

System Requirements

PEEPER requires Windows 3.1 or later or Windows for Work groups 3.11 or later. I have tried to provide keyboard support for most functions but a mouse or other pointing device is highly recommended.

A PC (386 processor or above) with at least 4 MB of RAM.

Product Support

Technical support is available at no charge by sending electronic mail to:

Al Meadows (Fineware Systems)

70650,2022 on CompuServe
70650.2022@CompuServe.com on Internet
BBTK05A on Prodigy
VB AL on America On line

Technical support also available by sending US Mail to Fineware Systems , P.O. Box 75776, Oklahoma City, Ok 73147.

Registered users have priority but I will try to answer all questions.

Copyright Notice

Copyright © 1994-1995 Fineware Systems and Al Meadows . All rights reserved.

Information of Space Hound

Space Hound is Fineware Systems' **flagship** product. It has received international recognition as a top notch Windows Utility. It's been mentioned in the pages of Windows Magazine, Windows Sources, PC Connect, ZiffNet Threads, and CompuServe Magazine.

As a bonus, you will receive a copy of the shareware version of **Space Hound** with your paid registration to **Peeper**. Just Released! Novell Netware Edition of Space Hound

Space Hound features:

The overall mission of the program is to **sniff out** wasted space on your hard disk that is duplicated, obsolete, and simply forgotten. The freely distributable shareware version has this as it's primary goal. The **Pro** version adds **additional** functionality for dealing with what is found.

Directory Map: Similar to the Windows File Manager in appearance, its main purpose is to provide a convenient method of evaluating disk storage usage within the directory plus the combined storage of all nested levels below.

Extensions Display: An organizational tool which allows you to group all files which share the same file extension name.

Duplicates Display: Allows for searches over one or more physical disk volumes for duplicate files. You may search for exact duplicates or only matching file names.

Files Display: Allows for search accross multiple disk volumes for multiple file pattern mask.

From these basic displays, you have a number of additional mini-functions available from each display.

Common functions available from all displays Include:

- Hard copy reports of complete or just partial information.
- Files can be compared at the bit-level.
- Version and file identification information extraction
- Files may be deleted from the hard disk utilizing any display
- Files may be copied or moved from any display

Specific functions of the **Directory Map Display** include:

- Printable Directory Map may be started at any level, not just root
- Storage totals at each directory plus nested sub directories
- File counts for each directory plus nested sub directories in the printed report
- Displays can be saved and later reloaded for further evaluation and action

Specific functions of the **Extensions Display** include:

- Collects all extension types in a single pass
- Printed report including all extensions or a single extension only
- Storage totals and file counts by extension

Specific functions of the **Duplicates Display** include:

- 3 distinct duplicate search functions
 - 1. Search for duplicate names. This is useful for finding files which have the same

name but are different in size such as a DLL at version 1.0 and a DLL at version 1.1 might be.

- 2. Search for duplicate names that are identical. This is probably the best search to run first because it limits the number of duplicate files to those which are truly identical to other files.
- 3. Search for duplicate files. This variation doesn't care what a file is called, it searches using CRC checking to identify duplicates.
- Collects all duplicates in a single pass
- Printed report including all duplicates found or on single duplicate name only
- Storage totals and file counts displayed by duplicate name
- Each search allows for the use of a filter which can limit the search to a set of specific file names or wild card patterns (Example: *.txt or Memo?????.*)

See Space Hound Pro features:

Site Licensing

Site License pricing is applicable to orders of 10 or more copies only. Quantities under 10 are priced at the standard rate (see [order form](#)).

For quantities of 10 or more, the price is \$150.00 + \$7 per additional license over 10.

Example: a 50 user site license would be $\$150.00 + (\$7 \times 40) = \$430.00$.

Note: Only a single master diskette containing the program will be distributed on a site license unless requested otherwise. If you desire additional diskettes, please add \$1 per diskette desired.

Space Hound Pro Features

A file viewer with support for over 20 file formats including ASCII, HEX, PCX, TIF, GIF, BMP, WMF, ICON, Microsoft Word, WordPerfect, AMI PRO, xBase, Paradox, Lotus, Excel, ZIP, LZH, Quattro Pro, MetaFiles, Q&A, Windows Write, and Microsoft Works. (New viewers are added from time to time and support for newer file formats updated as soon as possible.)

- Up to 9 file viewers may be open at a time. This will aid you in further evaluating the data that has been stored on your computer. The viewers may be launched via a button on the toolbar or by double clicking on the file from any of Space Hound Pro's program windows that list files.
- Enhanced version control information display for files containing version information.
- A File and program launcher which utilizes file associations. Launch programs from anywhere within **Space Hound Pro** where files are listed.

Ordering Online

You may order using CompuServe's Software Registration Service:
enter **GO SWREG** at the ! prompt and follow the menus.

PEEPER's registration id is **3925**. The indicated price will be \$22.95 plus \$2 shipping and handling (\$4 outside US, Canada, and Mexico).

Other Fineware Systems Products:

Space Hound Pro's registration id is **2594**. The indicated price will be \$37.95 which includes FREE shipping and handling.

Note: Ordering On line via CompuServe is an exceptionally easy way for those users who live outside the United States to pay for Shareware.

More on the ASP

ASP, the Association of Shareware Professionals, was formed in April 1987 to strengthen the future of shareware (user supported software) as an alternative to commercial software. Its members, all of whom are programmers who subscribe to a code of ethics or are non-programmers sincerely interested in the advancement of shareware, are committed to the concept of shareware as a method of marketing.

ASP's primary goals are:

To inform users about shareware programs and about shareware as a method of distributing and marketing software;

To encourage broader distribution of shareware through user groups and disk dealers who agree to identify and explain the nature of shareware;

To assist members in marketing their software;

To provide a forum through which ASP members may communicate, share ideas, and learn from each other; and

To foster a high degree of professionalism among shareware authors by setting programming, marketing and support standards for ASP members to follow.

Select File Types

This button allows you to limit the files being "peeped on" to specific file types.

File Content Display

This area will contain the contents of the selected file. If the file type is one of the supported file types, the contents will be displayed in a readable format. If the format is unknown or the file is not normally viewed then the display will consist of a hex dump of the file's contents.

Note: Files containing embedded version information will have their view window split between the hex dump portion and the embedded data.

Imported Modules

These are also referred to as file dependences. In order for the file currently being displayed to operate normally, all of its file dependencies must be found during run time.

Directory List

Used to select the directory where the files you wish to view are located.

Example of File Dependencies

Imported Name Table:

KERNEL
GDI
USER
COMMDLG
SHELL

The CLOCK applet which ships with Microsoft Windows depends upon the presence of 5 other modules called KERNEL, GDI, USER, COMMDLG, & SHELL. In general, these files will be Dynamic Link Libraries and can be identified by the .DLL file extension name. If a file needed by a program is missing, the program's error routines may not identify which module can't be found.

Example of Version Information

Filename: clock.EXE
OriginalFilename: CLOCK.EXE
CompanyName: Microsoft Corporation
FileDescription: Windows Clock application file
FileVersion: 3.10.0.103 (3.10)
InternalName: CLOCK
LegalCopyright: Copyright © Microsoft Corp. 1991-1992
ProductName: Microsoft® Windows(TM) Operating System
ProductVersion: 3.10.0.103 (3.10)
FileType: Application

The ability to extract the version information is valuable when attempting to resolve conflicts when you have multiple versions of the same file. File date stamps cannot always be trusted to indicate which version of a file is the latest.

List of Viewers

ASCII, HEX, PCX, TIF, GIF, BMP, WMF, ICON, Microsoft Word, WordPerfect, AMI PRO, xBase, Paradox, Lotus, Excel, ZIP, LZH, Quattro Pro, MetaFiles, Q&A, Windows Write, and Microsoft Works.

Also included Program Information Files (.PIF) and Windows Group File (.GRP)

(New viewers are added from time to time and support for newer file formats updated as soon as possible.)

Credit Card Requirements

When ordering with a credit card, it is important that you include the following information.

- Credit Card Number
- Expiration Date
- Name as it appears on the card
- Address that your statements are delivered to (**Note:** This will be a requirement for all credit card transactions in the future when the card itself cannot be imprinted. It is for your own protection.)
- Address that the product is to be delivered to if different than your billing address.

Upgrading to Latest Version

Peeper will be continually upgraded to add features and correct programming errors as they are detected. In addition, changes to the underlying operating systems may make some features of the program redundant while creating new capabilities that can be enhanced by the program.

The policy of Fineware Systems on upgrades to registered users is as follows:

If you are already a registered user of Peeper, you may be able to update your existing registered version to the latest edition by simply downloading the most recent version while retaining the program's registered features. As program errors and bugs are detected and resolved, Fineware will make available additional releases on the main commercial services such as CompuServe, America Online, and Prodigy.

You may update your existing copy to the new version as long as the version number on the new release is 1.99 or less.

To update an existing installation, simply replace all existing files with any which are included within the zipped file.

If you do not have access to these two commercial online services, then we must provide you with diskettes via regular US Mail.

There is a \$5.00 Shipping/Handling charge for this service. You will receive a complete set of installation disks for the latest release.

Site license holders should contact Fineware Systems for a price quote.

About PsL

PsL is short for "Public (software) Library". PsL has been distributing public domain and shareware software on disks since 1982. PsL has been recommended in every major (PC) computer magazine, many computer books, and many non-computer publications such as NY Times.

PsL offers a shareware registration order taking service primarily for the benefit of shareware authors and their customers. The service began in January 1989 and presently takes orders for many hundreds of shareware authors.

PsL can take orders via our 800#, non-800#, CIS#, and FAX#. Their operators are available from 7:00 a.m. to 7:00 p.m. CST Monday-Friday and normally from 7:00 a.m. to 4:00 p.m. on weekends. They provide an easy and direct way to register shareware via CompuServe - via e-mail. FAX and credit cards are the primary means of registration for overseas customers.

Please note that support and usability problems **are not to be reported to PsL**. They do not have support technicians who are trained about the usage and capabilities of Peeper and simply refer such calls to me anyway "after" charging me a service charge.

PsL Ordering Information

You can order with **MasterCard, Visa, Amex, or Discover** from Public (software) Library by calling **1-(800) 2424-PsL** or **1-(713) 524-6394** or by **FAX** to **1-(713) 524-6398** or by **CompuServe E-mail** to **71355,470**. You can also mail credit card orders to PsL at **P.O.Box 35705, Houston, TX 77235-5705**.

THE ABOVE NUMBERS ARE FOR ORDERS ONLY. NOT TECHNICAL SUPPORT.

PsL Order Form

Any questions about the status of the shipment of the order, refunds, registration options, product details, technical support, volume discounts, dealer pricing, site licenses, etc., must be directed to Fineware Systems .

To insure that you get the latest version, PsL will notify us the day of your order and we will ship the product directly to you.

PsL Order Form

PsL Order Form (ver 1.12)

Note: Select "File-Print Topic" from the menu bar to print this form.

You can order **Peeper** by Phone, Mail or FAX with payment by credit card.

PsL Product# 11771

Name: _____

Company: _____

Street: _____

Street: _____

City: _____

State: _____ ZIP: _____

Country: _____

Telephone Number: _____

Credit Card Type: _____

Credit Card Number: _____

Expiration Date: _____

Signature: _____

(Unless otherwise requested we ship a 3.5" HD disk)

Peeper	22.95	_____
Texas residents add 8.25% sales tax		_____
Shipping/Handling - US or Canada	2.00	_____
Shipping/Handling - Outside of US/Canada	4.00	_____
Total in US Funds:		_____

FAX or Mail

Public (software) Library

P.O. Box 35705

Houston, TX 77235-5705

Orders: 1-800-2424-PsL or 1-713-524-6394

FAX Orders: 1-713-524-6398

By the way, where did you obtain the shareware version
of **Peeper**: _____

Launch New Viewer

You may have up to 9 file viewers open at a time.

Exit Program

This button Terminates **Peeper** and closes all open displays within the program.

Display Mode

You may view files in their native mode (i.e. graphics as images) or you may view the hexadecimal dump by selecting from these two options.

File Icon

This small image when present indicates either the icon of the program itself or in the case of a document, the icon associated with the program used to create the file. In this example, the file type is a Windows bitmap (.BMP) graphic and the program associated with .BMP files is the Windows Paintbrush applet.

Delete File

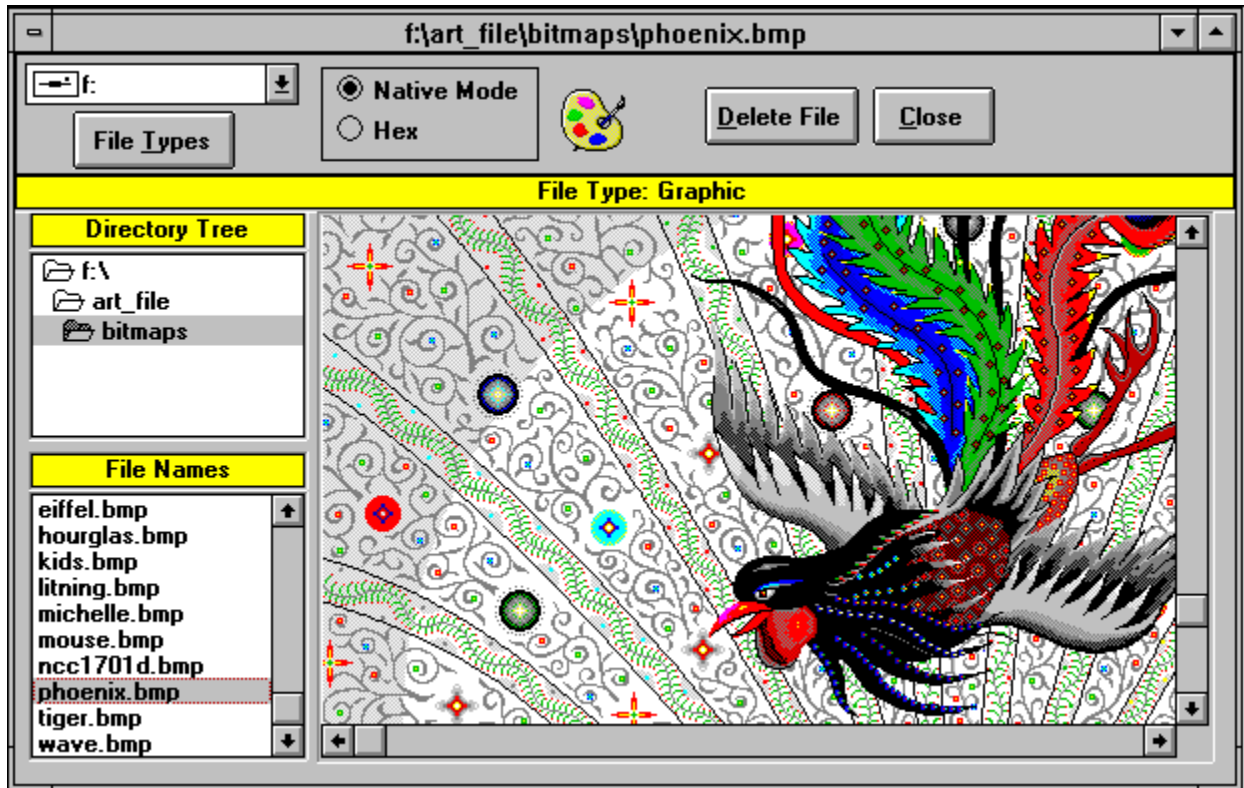
Pressing this button will delete the currently displayed file.

Close Current Display

This button closes the current window only. Use the close button on the main toolbar to terminate the program.

Primary View Window

Use the mouse to select specific information about each screen element from the graphics below. Simply click once where you see the mouse pointer change to a pointing finger.



Displayed File

This is the currently selected file. Depending upon the file type, you may be able to mark and copy the file with the mouse to the Windows clipboard. Once the file has been copied to the clipboard, you may paste the contents into other programs such as a word processor.

Netware edition of Space Hound

An extended version of Space Hound suitable for "sniffing out" wasted space on your Novell server is available now. It includes additional columns of data on each display which show file ownership, last updated by, and 4 netware specific date fields including accessed date, archived date, etc.

Contact [Fineware Systems](#) for more information.

Glossary



A

AI Meadows

E

embedded

F

Fineware Systems

H

hexadecimal

P

PsL

S

sniff out

T

top notch

V

version information

Fineware Systems

Fineware Systems

PO Box 75776

Oklahoma City, OK 73147

AI Meadows

Custom programming services available.

top notch

According to Ziff-Davis's shareware reviewer Preston Gralla.

sniff out

Basis for the program's name.

embedded

Stored within the file itself

version information

Used to identify the name, description, release, copyright and other information related to the file. This information is optional and is placed within the file by the developer of a Windows program module.

PsL

Public (software) Library

P.O. Box 35705

Houston, TX 77235-5705

hexadecimal

Numbering System using base 16. The decimal numbering system is base 10. The number 0 through 9 is equivalent in both numbering systems. At the number TEN, a base 10 system requires two positions. A base 16 system represents the base 10 numbers 10,11,12,13,14, & 15 as A,B,C,D,E & F. In Hex, the number 256 would be represented as FF.

