



RibbonCD Help Index

Click on a subject to view:

[Overview](#)

[The Ribbon](#)

[The Options Window](#)

[Disc Maintenance](#)

[Registering RibbonCD](#)

[Trouble Shooting](#)

The Ribbon

Click on a ribbon control for more information.



Also See:

[Overview](#)

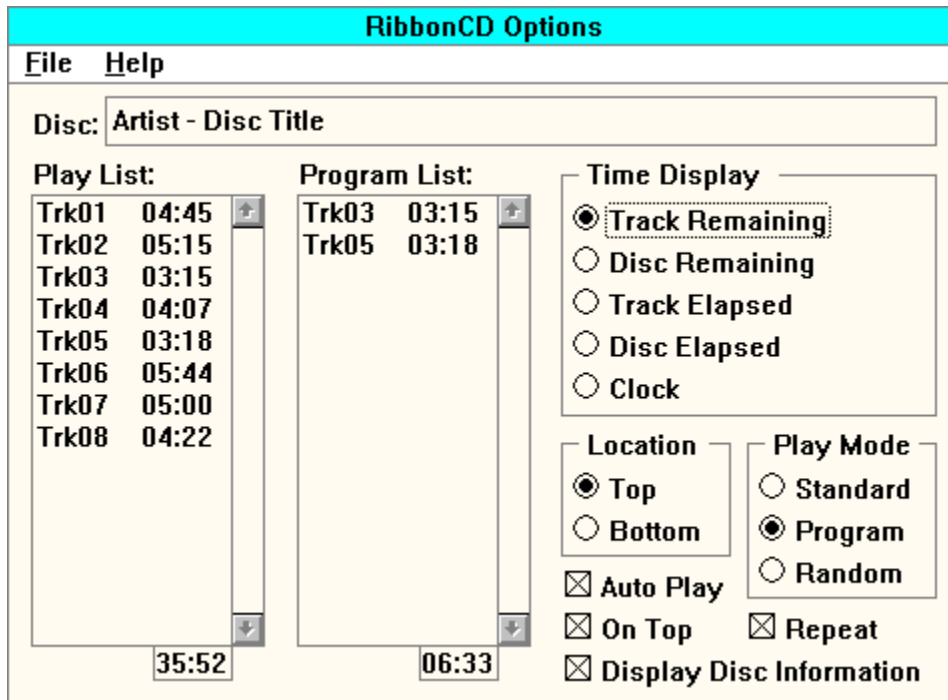
[The Options Window](#)

[Disc Maintenance](#)

[Registering RibbonCD](#)

[Trouble Shooting](#)

The Options Window



Click on an Options Window area for more information.

[Also See:](#)

[Overview](#)

[The Ribbon](#)

[Disc Maintenance](#)

[Registering RibbonCD](#)

[Trouble Shooting](#)

Exit Button



Clicking on the Exit Button will close RibbonCD.

Track Display

The Track Display shows the currently playing CD track.

Time Display

This display shows the time/status of the playing CD in the selected format:

Track Remaining	(TrkR)
Track Elapsed	(TrkE)
Disc Remaining	(DiscR)
Disc Elapsed	(DiscE)
Current Time	(Time)

Previous Button



This button will make RibbonCD play the previous selection of the current play list (standard, random, or program).

Back Button



This button will make RibbonCD go back 15 seconds in the current selection and resume play.

Pause Button



This button will pause RibbonCD. Pressing the PLAY button will resume "play mode" of the current selection at the point where PAUSE was clicked.

Play Button



This button will make RibbonCD start the current play list (standard, random, or program). If it is clicked while a selection is already playing, RibbonCD will restart the selection. If it is clicked while in PAUSE mode, RibbonCD will resume playing the current selection at the position it was paused.

Stop Button



This will make RibbonCD stop the "play mode" and reset to the beginning of the selected play list (standard, random, or program).

Forward Button



This will make RibbonCD go forward 15 seconds in the current selection and resume play.

Next Button



The NEXT button will make RibbonCD play the next selection of the current play list (standard, random, or program).

Eject Button



If your CD player is capable of ejecting, RibbonCD will eject the loaded disk and wait for another to be loaded. If your player has a motorized tray, this button will also close the player's door.

Direct Selection Buttons



These buttons allow you to directly select the track you wish to play. For track numbers less than ten, simply click on the track number. For track numbers 10 or higher, click on the "+10" button first and then on the second digit of the number.

Options Button



This button displays and hides the Options window where you may select from several configuration options for RibbonCD. This window is also used to assign a title and program information for the currently loaded disc.

Minimize Button



Clicking this button will minimize RibbonCD. The player will continue with its current operation but in a minimized state.

Title Display

This area shows the title that you assigned for the disc in the Options window.

Next Track Display

RibbonCD shows in this box, the next track that will be played from the current play list (standard, program, or random).

Play Mode Display

This indicator shows the current play mode:

- (S) Standard
- (P) Program
- (R) Random

Options Menu

File Section:

Hide Options - hides the Options Window (same as clicking on the Options button on the ribbon).

Disc Maintenance - Activates the Disc Maintenance Window.

Exit RibbonCD - Closes the RibbonCD program (same as clicking on the Exit button on the ribbon).

Help Section:

Contents - Activates the on-line help (this file).

Register RibbonCD - Allows you to enter your personal registration number to deactivate the registration reminder notice.

About - Shows the RibbonCD copyright information.

Disc Title

This edit box allows you to enter a title for the currently loaded CD. Any title up to 75 characters long can be assigned to the disc. Then whenever you reload this CD into the player, the RibbonCD will "remember" the title and automatically display it in the title box of the ribbon.

Standard Mode Play List

This list contains all selections of the currently loaded CD. To program RibbonCD to play only certain tracks of the disc, double-click on the desired tracks in the list. These selections will then be placed on the Program Play List in the order that you clicked on them.

Std Mode Play List Time

This box contains the total "play time" for the currently loaded CD.

Program Mode Play List

This list shows the tracks that have been selected for the Program Mode. When RibbonCD is placed in Program Play Mode, only these selections will be played. To add a selection to this list, double-click on the desired track listed in the Std Mode Play List. To remove a selection from the program, double-click on the desired selection in this list. RibbonCD will "remember" your selected tracks so that your selections will be reloaded whenever you insert this disc into your player. RibbonCD will also automatically place itself in Program Play Mode whenever it loads a disc that has program information stored in the RibbonCD database.

Program List Play Time

This box shows the total play time for the programmed selections.

Time Display Format

The time display on the ribbon can be set to show one of the following formats:

Track Remaining (TrkR) - Shows the amount of time remaining for the currently playing track.

Disc Remaining (DiscR) - Shows the amount of time remaining for the currently playing disc.

Track Elapsed (TrkE) - Shows how much time has elapsed since the beginning of the playing track.

Disc Elapsed (DiscE) - Shows the elapsed time for the entire disc.

Clock (Time) - Shows the current time (12 hour format).

Location

This option allows you to position the ribbon at either the top or the bottom of your screen.

Play Mode

This group of buttons allow you to select between Standard (all disc tracks are played), Program (only selected tracks are played), or Random (all selections are played in random order) mode. If you have programmed tracks for a disc, RibbonCD will automatically place itself in Program Mode when the disc is inserted in the player.

Auto Play

When this option is selected, RibbonCD will automatically begin playing whenever a disc is inserted or the RibbonCD program is first started. If track selections have been programmed for the inserted disc, RibbonCD will place itself in program mode before playing the disc.

On Top

The On Top feature forces RibbonCD to always be the top most window on your screen. This is a handy feature when you want access to the RibbonCD controls while working with other applications. When using this feature it is advisable to set the location of the ribbon at the bottom of your screen so that you will not cover up the caption bar controls (system menu, minimize, & maximize) of the other running programs on your system.

Repeat

This option forces RibbonCD to replay the current disc when it ends. RibbonCD will remain in it's current play mode (standard, program, or random).

Display Disc Information

With this option enabled (checked) RibbonCD will show the disc title, next track, and play mode on the lower half of its ribbon. Disabled, the ribbon will shrink to less than half its height showing only the CDROM controls. Disable this option when the screen "real estate" is at a premium and you need every possible inch for other programs that you are using. In this contracted mode, RibbonCD uses less space than a standard caption bar.

Disc Maintenance

The Disc Maintenance window allows you to remove disc entries from the RibbonCD database. You will want to do this if you have entered information for a disc that you no longer own or use.

To use this feature, simply double-click on the disc entry that you wish to remove. RibbonCD will prompt you to confirm the deletion before removing it from the list. When you are done, click on the DONE button or close the window with the system menu or [Alt]-[F4] speed key.

Also See:

[Overview](#)

[The Ribbon](#)

[The Options Window](#)

[Registering RibbonCD](#)

[Trouble Shooting](#)

Registering RibbonCD [Set Up Printer](#) [Print Order Form](#)

RibbonCD is not free software. It is being marketed under the Shareware concept. This means that you are allowed to use this program free of charge for a trial period (in this case 30 days). If you decide to keep the program after this period, you must send the registration fee to the author (California ClipArt). The fee for this program is only \$10.00 (U.S. funds). In exchange for the \$10.00 California ClipArt will send you a registration "key" that you can enter in the RibbonCD program to disable the registration reminder notice. This key will remain valid for any future upgrades to the program that we issue.

Shareware also means that you may freely copy and distribute RibbonCD to other people as long as you adhere to the following conditions:

- 1) Only the RCD.EXE, RCD.HLP, README.TXT, and SETUP.EXE files may be distributed or included in an archive (zip) file.
- 2) You may not charge a fee for RibbonCD (other than a duplication fee not to exceed \$7.00 U.S. funds).
- 3) You may not alter the RibbonCD files in any form or fashion.
- 4) You may not distribute a registration key or any file that contains a registration key for RibbonCD.

To print an order form for RibbonCD, click on the "Print Order Form" selection above. Otherwise, simply send \$10.00 (check or postal money order) to:

California ClipArt
RibbonCD Registration
P.O. Box 1259
Arroyo Grande, CA 93421

(805) 489-4242

Be sure to include your name, address and phone number with your payment.

When we receive your payment, we will mail your personal registration key that you can enter at the registration reminder notice.

[Also See:](#)

[Overview](#)

[The Ribbon](#)

[The Options Window](#)

[Disc Maintenance](#)

[Trouble Shooting](#)

RibbonCD Registration Order Form

Please complete this form and mail with \$10.00 (check or postal money order) to:

California ClipArt
RibbonCD Registration
P.O. Box 1259
Arroyo Grande, CA 93421

(805) 489-4242

Name : _____
Address : _____
City, State, Zip : _____
Phone : _____

When we receive your payment, we will send you a registration "key" that you can use to disable the "registration reminder notice".

Also available from California ClipArt:

Signature Scan - Tired of signing your name? Let us scan your signature. Then import it into your word processor! A real time saver for mass mailings, form and news letters. Your signature will be delivered on diskette as a TIF picture file.

Signature Font - We can convert your signature into a True Type font! Imagine signing your name by simply pressing a single key...

Windows Wallpaper Scan - We'll scan your original photograph or other artwork (up to 8" x 14" size) and convert it to the Windows Wallpaper format. You can then have your favorite photo, logo or picture of that "someone special" greet you whenever you use Microsoft Windows! (256 color video card recommended for color wallpaper scans)

Call or write for prices and information.

Trouble Shooting

Prior to its release, RibbonCD was tested on many different CDROM drives consisting of motorized tray, semi-automatic tray, and manual eject units from various manufacturers. These drives consisted of both single and multi-speed types.

If you experience any problems with RibbonCD please be sure to fully review the README.TXT file included with this program and this section of the on-line help. If after reading these topics you continue to have problems installing or using the program, please contact California ClipArt at (805) 489-4242 and fully describe the situation. We will attempt to resolve the problem and issue you an updated program if necessary.

The following are situations & answers that may help you resolve problems with running RibbonCD. To view the answer, simply click on the underlined question number.

Q1) RibbonCD starts but none of the CDROM control buttons work!

Q2) RibbonCD starts but when I press the play button it just re-reads the disc information and does nothing.

Q3) I press the play button and everything looks right but there is no sound.

Q4) Some of my CDs sound jittery and garbled when I play them.

Q5) RibbonCD won't start up with the same configuration that I set for it and/or forgets my programmed disc selections.

A1)

There are a couple of things that could be causing this problem.

First, if you start RibbonCD while the disc tray is open or the drive is empty, RibbonCD will not be able to open the MCI driver for the CDROM drive. You will need to manually insert a music CD in the player before RibbonCD will be able to continue.

The other cause for this problem is not having the CDROM drivers properly installed. RibbonCD communicates to Windows via the [MCI] CD Audio driver. Windows communicates to DOS through the MSCDEX program. Finally, MSCDEX communicates to the CDROM drive through the drive manufacturer's custom driver that is set up in the CONFIG.SYS file. If any one of these drivers is not installed or set up properly, RibbonCD will not function correctly. See the Getting Started section of the README.TXT file for more information on installing these drivers.

A2)

Usually this is caused because there is a program CD in the player rather than a music CD. Remove the CD from the player and replace it with a music CD.

A3)

The biggest culprit in this situation is a bad connection between your CDROM drive and the sound card or amplifier that you are using. At the back of the CDROM drive or its interface card there will be one or two sound connections. There is usually one to directly connect the CDROM drive to the sound card's CD in connector. Usually there is also a pair of RCA stereo jacks to plug the drive to either a stereo set or the Line In jack of your sound card. THESE CONNECTORS ARE SEPARATE FROM THE DIGITAL INTERFACE RIBBON CABLE THAT CONTROLS YOUR CDROM DRIVE. You will need to be sure that these connectors are properly routed before you will hear sound from your CDROM drive. Refer to your CDROM and sound card manuals for more details.

As a test, you can plug a pair of headphones into the jack provided on the front of the CDROM drive. If sound comes through the headphones, then you'll know the problem is in the connections to the sound card/amplifier.....OR.....

Another possibility is that the "volume control" for your sound card is set too low. Check the control at the back of the card as well as the "software mixer" volume level. This software mixer is a program usually provided by the sound card manufacturer to allow volume control from your computer's keyboard. Refer to your sound card's manual for more information.

A4)

Jittery or broken sound quality is normally caused by either a scratched/dirty music CD or a dirty laser lens in the CDROM drive. Replace the disc in the drive and see if the problem continues. If it does, consult your CDROM drive manual for the proper method of cleaning the CDROM lens.

A5)

If RibbonCD seems to unexpectedly lose information about your user configuration or programming selections, it is most likely caused from the "working directory" not being set to the RibbonCD directory in Program Manager. Go to the Program Manager, highlight the RibbonCD icon and then select the FILE/PROPERTIES menu selection. Under "Working Directory" enter the name of the RibbonCD directory (usually \RCD).

You can also avoid this situation by listing the RibbonCD directory in the PATH statement of your AUTOEXEC.BAT file.

Overview

The objective in writing RibbonCD was **not** to create the ultimate Windows music CD database/player program but rather to create a CD player application that had all the features needed for "real-world" situations. RibbonCD is intended for the business or home user that enjoys listening to music CDs while working in other programs (spreadsheet, word processor, home budget, etc).

The problem with most other CD player programs is they are bulky (take up too much screen space). And when you minimize them, their controls (like pausing the player when you need to answer the phone) are no longer quickly available. RibbonCD addresses these problems by creating a small toolbar (the ribbon) that attaches to the top or bottom of your screen. You can set the ribbon so that it will always be the top most window making the controls instantly available. And by being so small (thinner than a caption or menu bar) RibbonCD won't hinder your "real-world" tasks like writing your letters or entering your spreadsheet data.

RibbonCD also goes a step further and provides you with an option to "expand" the ribbon to display the disc title and other information below the main controls. This information as well as the programming information of your favorite tracks is stored in the RibbonCD database so that it is available whenever you reload the disc into your player.

Programming RibbonCD to play your favorite tracks couldn't be easier. Simply double-click on your desired selections and they are instantly placed on the program list and stored on your computer's hard drive. Plus, you are never "forced" to enter a title or other disc information in order to save your favorite tracks. RibbonCD will always keep track of it for you, ready for the next time you play the disc.

Other features included with RibbonCD are:

Random Mode that plays your CD tracks in random order.

Repeat Play that forces RibbonCD to replay your tracks when it reaches the end of the disc.

Auto Play which automatically starts Play Mode whenever RibbonCD is started or a new disc is inserted.

User Selectable Time Format allows you to see the progress of the current CD by either Track Remaining, Disc Remaining, Track Elapsed, Disc Elapsed, or the current time of day.

