

Contents

[Overview](#)

[Registration](#)

[License](#)

[Disclaimer of Warranty](#)

[Support](#)

Overview

System Monitor is a Windows resource monitor that can give a warning message if the Windows resource usage reaches a selected level. The resources monitored are: System (kernel), Graphic Device Interface (GDI), User and Free Memory. By using this program you can keep track of when Windows resources run low and avoid a crash by reducing resource usage before they run out.

Info Button: Click on this button to display program and system information.

Set Button: Click on this button to show the [Settings Dialog Box](#).

Exit Button: Click on this button to exit the program.

NOTE: The System Monitor window also displays the current date, time and Windows session length (the time since you last started Windows).

Registration

This program is a Shareware product. You may copy this program and distribute it to your friends for their evaluation. If you make use of this software you are expected to pay a registration fee. Please help support the Shareware concept by registering your Shareware programs. This will enable shareware authors to continue to write new programs.

Each registered user of this program may install this program on as many computers as they like as long as its not used at more than one location at the same time. (See the order form for multiple user site licenses). When you register this program you will receive a letter confirming your registration that will include a code to remove the message "Unregistered Shareware" from the title bar. E-mail and regular mail support will be free to registered users for one year. Free upgrades will be made available to registered users when the upgrades fix bugs that effect functionality, for a full year after registration. If a registered user has a problem with this program that effects functionality that we cannot correct, then a full refund of the registration fee will be offered. To register please print and fill out the registration form (ORDER.WRI file).

Definition of Shareware

The following definition of Shareware is an excerpt from a file on Shareware provided by the Association of Shareware Professionals, prepared by Paul Mayer, author of GRAB Plus.

Shareware distribution gives users a chance to try software before buying it. If you try a Shareware program and continue using it, you are expected to register. Individual programs differ on details -- some request registration while others require it, some specify a maximum trial period. With registration, you get anything from the simple right to continue to using the software to an updated program with printed manual.

Copyright laws apply to both Shareware and commercial software, and the copyright holder retains all rights, with a few specific exceptions as stated in the license agreement. Shareware authors are accomplished programmers, just like commercial authors, and the programs are of comparable quality. (In both cases, there are good programs and bad ones!) The main difference is the method of distribution. The author specifically grants the right to copy and distribute the software, either to all and sundry or to a specific group. For example, some authors require written permission before a commercial disk vendor may copy their Shareware.

Shareware is a distribution method, not a type of software. You should find software that suits your needs and pocketbook, whether its commercial or Shareware. The Shareware system makes fitting your needs easier, because the overhead is low, prices are low also. Shareware has the ultimate money-back guarantee -- if you don't use the product, you don't pay for it.

Disclaimer of Warranty

THIS SOFTWARE AND MANUAL ARE SOLD "AS IS" AND WITHOUT WARRANTIES AS TO PERFORMANCE OF MERCHANTABILITY OR ANY OTHER WARRANTIES WHETHER EXPRESSED OR IMPLIED. BECAUSE OF THE VARIOUS HARDWARE AND SOFTWARE ENVIRONMENTS INTO WHICH THIS PROGRAM MAY BE PUT, NO WARRANTY OF FITNESS FOR A PARTICULAR PURPOSE IS OFFERED. GOOD DATA PROCESSING PROCEDURE DICTATES THAT ANY PROGRAM BE THOROUGHLY TESTED WITH NON-CRITICAL DATA BEFORE RELYING ON IT. THE USER MUST ASSUME THE ENTIRE RISK OF USING THE PROGRAM. ANY LIABILITY OF THE SELLER WILL BE LIMITED EXCLUSIVELY TO PRODUCT REPLACEMENT OR REFUND OF PURCHASE PRICE.

License Agreement

LIMITED USER LICENSE

The programs contained in TC's Toolbox are NOT public domain programs. They are copyrighted by Specific Applications Software. This software and accompanying documentation are protected by United States copyright law and also by international treaty provisions.

Specific Applications Software grants you a limited license to use this software for evaluation purposes for a period not to exceed thirty days. If you continue using this software after the thirty-day evaluation period you MUST make a registration payment to Specific Applications Software.

You may not use, copy, rent, lease, sell, modify, decompile, disassemble, otherwise reverse engineer, or transfer the licensed programs except as provided in this agreement. Any such unauthorized use shall result in immediate and automatic termination of this license. All rights not expressly granted here are reserved to Specific Applications Software.

If you register these programs you cannot share the registration code with anyone. You may use this software on as many computers as you wish as long as only one copy of it is being used at one time (unless you obtain a site license for multiple users). Your registration is not transferable.

This agreement shall be governed by the laws of the state of Minnesota. Any legal action or proceeding initiated by either party originating from or relating to this agreement shall be brought about only in a State or Federal court of competent jurisdiction located in Hennepin county, Minnesota. The parties hereby agree to the jurisdiction of said courts. If you do not agree with this license agreement, then do not use the program and do not register it.

ASP Ombudsman Statement

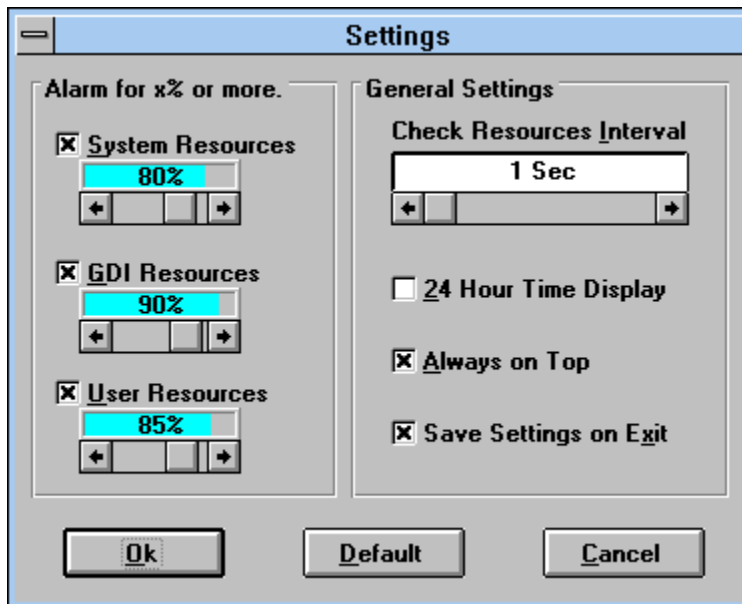
Specific Applications Software is a member of the Association of Shareware Professionals (ASP). ASP wants to make sure that the shareware principle works for you. If you are unable to resolve a shareware-related problem with an ASP member by contacting the member directly, ASP may be able to help. The ASP Ombudsman can help you resolve a dispute or problem with an ASP member, but does not provide technical support for members' products. Please write to the ASP Ombudsman at 545 Grover Road, Muskegon, MI 49442 or send a CompuServe message via CompuServe Mail to ASP Ombudsman 70007,3536.



Support

Registered users of this program receive free mail or E-mail support for one year. Contact the author at one of the addresses that follow. CompuServe ID 76470,3424 from the Internet this would be 6470.3424@compuserve.com or send a postcard to Tim Carlson, Specific Applications Software, P.O. 6146, Minneapolis, MN 55406-0146.

Settings



The Settings Dialog Box is used to set program preferences. Click on a control to see a short description of its function.

Set System Resources Alarm

Check the System Resources check box and select the percentage of resources used to trigger the warning message for this resource at the selected level.

Set GDI Resources Alarm

Check the GDI Resources check box and select the percentage of resources used to trigger the warning message for this resource at the selected level.

Set User Resources Alarm

Check the User Resources check box and select the percentage of resources used to trigger the warning message for this resource at the selected level.

Check Resources Interval

Use the Resources Interval scroll bar to set the interval time that the program uses to update the resources displays. If for example the time is set for 1 second then the program will check the percentage of resources used and update the displays once every second.

24 Hour Time Display

Check this box to have the time displayed in 24 hour time.

Always on Top

Check this box to always keep the System Monitor window on top of all other program windows.

Save Settings on Exit

Check this box to save program settings for use the next time the program is used.

Ok Button

Click on this button to use the currently selected settings.

Default Button

Click on this button to change the displayed settings to their default values.

Cancel Button

Click on this button to continue to use the previous settings.

