

# COOL STUFF

**Heres our latest product catalog of fun  
and useful stuff.**

Kings Corners

Tower Solitaire

Oh No!

Jigsaw

Stick Em

Metrix

HexView

Order Form

Classic solitaire

Classic solitaire

Addictive dice game

Puzzles for all ages

Logic game

Metric conversion utility

Hexadecimal file viewer

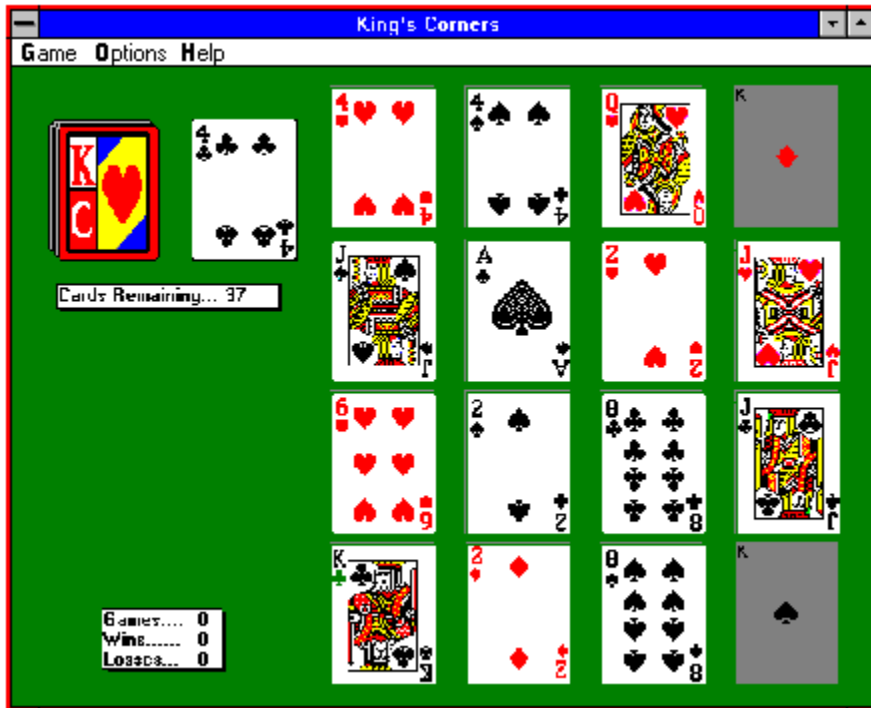
Printable order form

*All software runs on Windows 3.1 or above including Windows 95.*

*Email.....[fsagames@iwaynet.net](mailto:fsagames@iwaynet.net)*

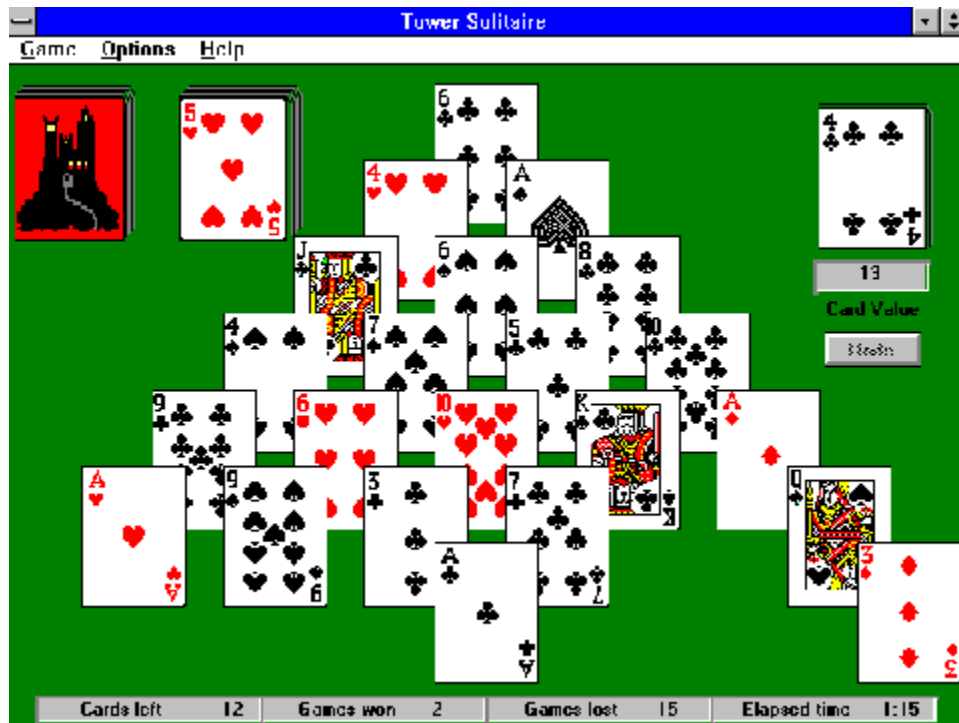
*World Wide Web.....<http://www.iwaynet.net/~fsagames>*

**King's Corners** is a Solitaire card game written for Microsoft Windows version 3.1 and above. The game is completely graphical and will utilize an optional sound card if present. The object of the game is to place all face cards around the perimeter of the playing board. The playing board consists of sixteen squares, four squares per row. Kings, Queens, and Jacks must be placed in particular squares as shown below. The suit of the face cards doesn't matter unless you are playing with the "Suits" option enabled. After all 16 squares are filled, you discard pairs of ten and continue dealing until you either win or are unable to place a face card in an unoccupied slot. New version 3.0 allows you to save and restore the current game.



King's Corners

**Tower Solitaire** is a card game written for Microsoft Windows version 3.1 and above. The game program is completely graphical and will utilize an optional sound card if present. The object of the game is to remove all the cards from the playing surface. Cards must normally be removed in pairs where the value of the pair equals 13. Pairs can be made from both the playing surface and the Draw Pile. The suit of the card is irrelevant and not used in determining the card's value. Game options make the game harder or easier to play and win (or lose). The game also keeps track of all games won and lost to date. New version 2 now features game save and restore.



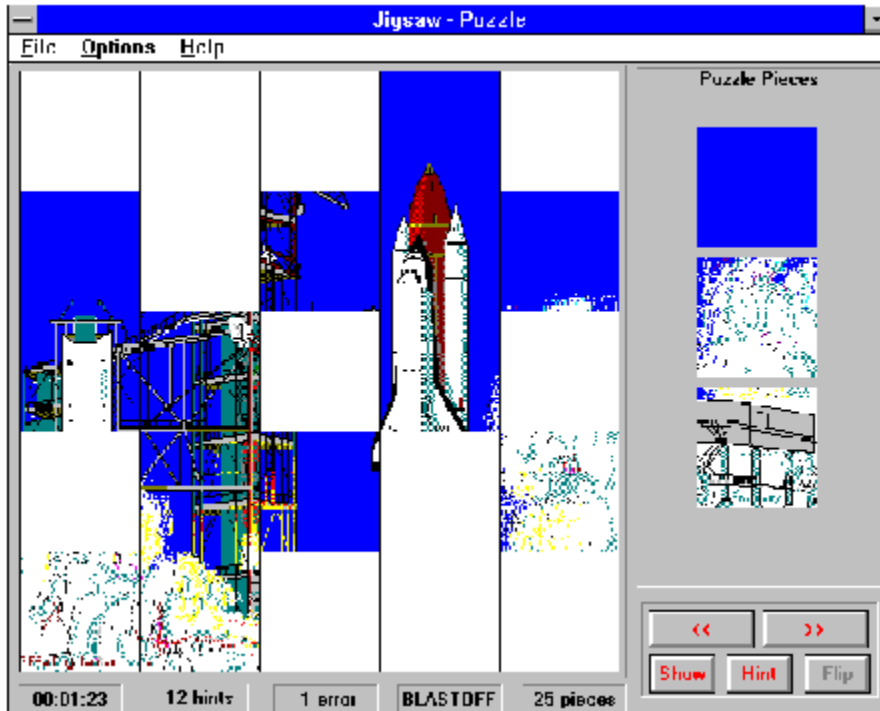
Tower Solitaire

**Oh No!** is a dice game which pits both luck and strategy against your human or computer opponent. Only certain combinations of the dice count as points, and you can gain or lose extra points if you choose to partake in side wagering when offered by Andrew Dice Cray. The game can be as frustrating as it is exciting depending on the roll of the dice. Many amusing sound effects can be heard during game play if you have a Sound Blaster or compatible sound card. Complete online help is a click away, and several game options are available via the Configuration options dialog. Scores of the top ten players are recorded for posterity. New version 3.0 allows you to save and restore the current game. Microsoft Windows version 3.1 or above and a mouse is required. A sound card is optional.



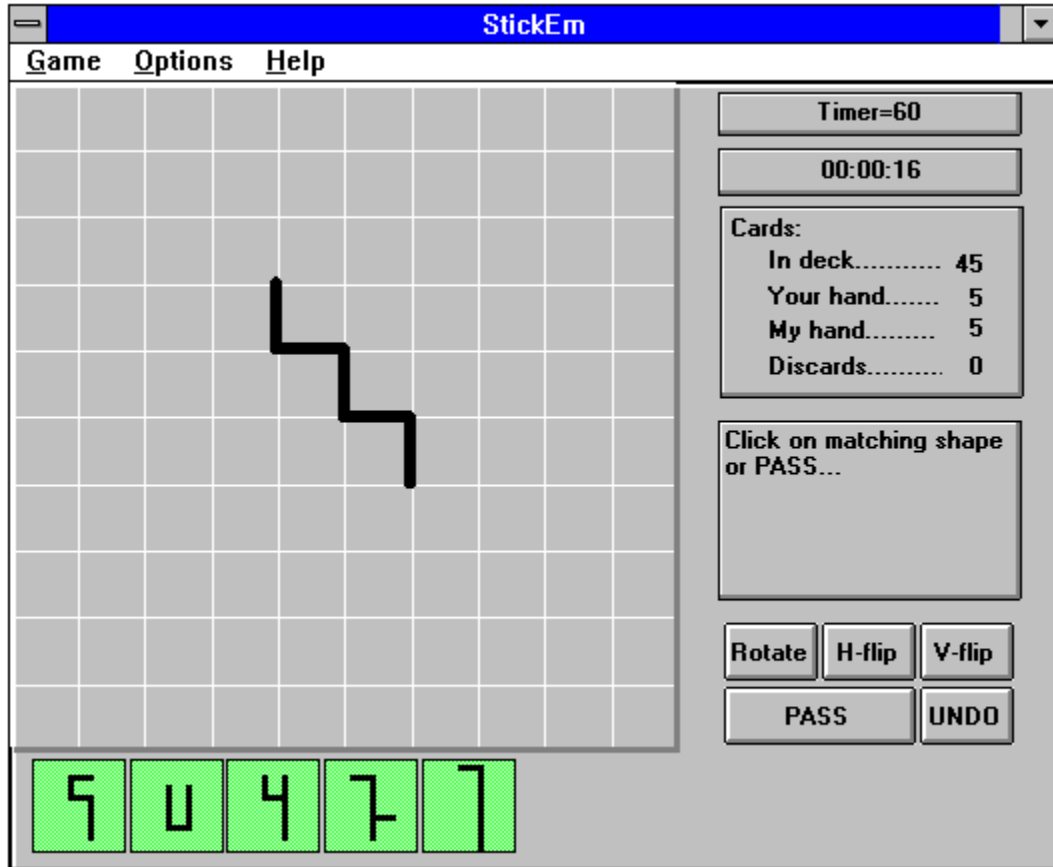
Oh No!

**Jigsaw** is a puzzle game written for Microsoft Windows version 3.1 and above. You can use any Windows BMP, RLE or META file to create your own puzzle. After deciding on a picture, simply tell Jigsaw if you want the picture chopped up into circles, squares, triangles, or random shapes and how many pieces. The chopped up pieces appear in scrambled order in the viewing box, and you just scroll through the viewing box pointing and clicking to put the pieces in place. But watch out! Some of the pieces in the viewing box may be upside down just to add to the confusion. Puzzles may be saved for future play at any time. There are tons of options to make the game harder or easier to play. It's great for small children, too! Jigsaw comes supplied with five puzzles which are not as easy as they look. New version 2 now has randomly shaped pieces and background color selection.



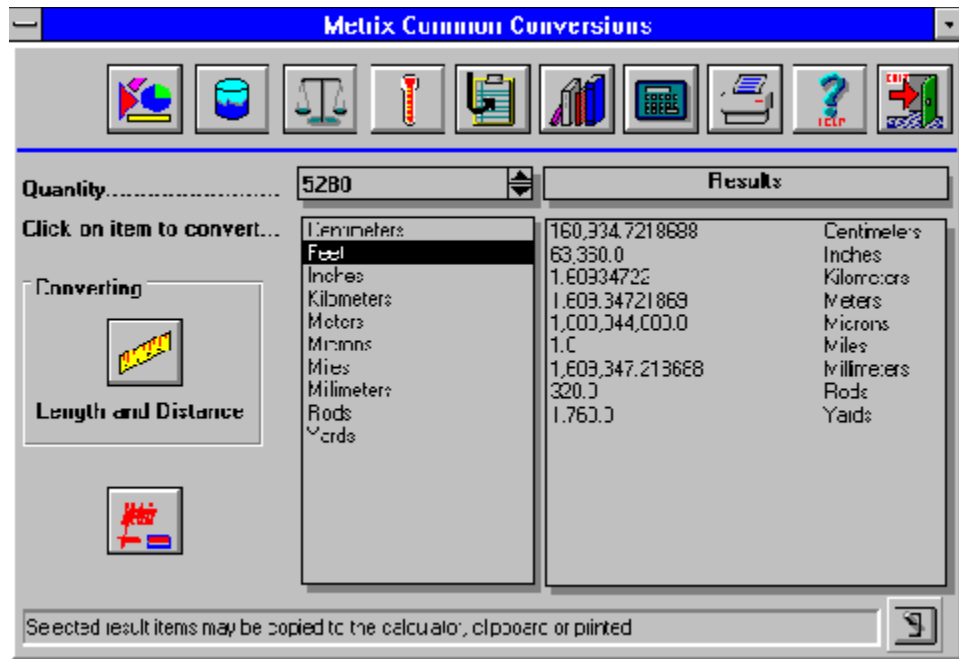
**Jigsaw**

**StickEm** is a game written for Microsoft Windows version 3.1 and above. The object of the game is to be the first to discard all shape cards by matching a continually changing shape composed of five sticks against each of your cards. You may move one stick in an attempt to form a match, however all five sticks must all somehow touch each other end-to-end. Either you or the computer will win. There are no ties. StickEm contains features to enhance the fun. These include a game timer, Pause & Resume, peek at the computer's cards, check the last computer move, watch the computer think, UNDO, and a Top Ten winners' scoreboard. Features for helping you match your shape are Rotate, Vertical Flip, and Horizontal Flip. Complete online help is only a click away. New version 2.0 allows you to save and restore the current game and has a revamped look.



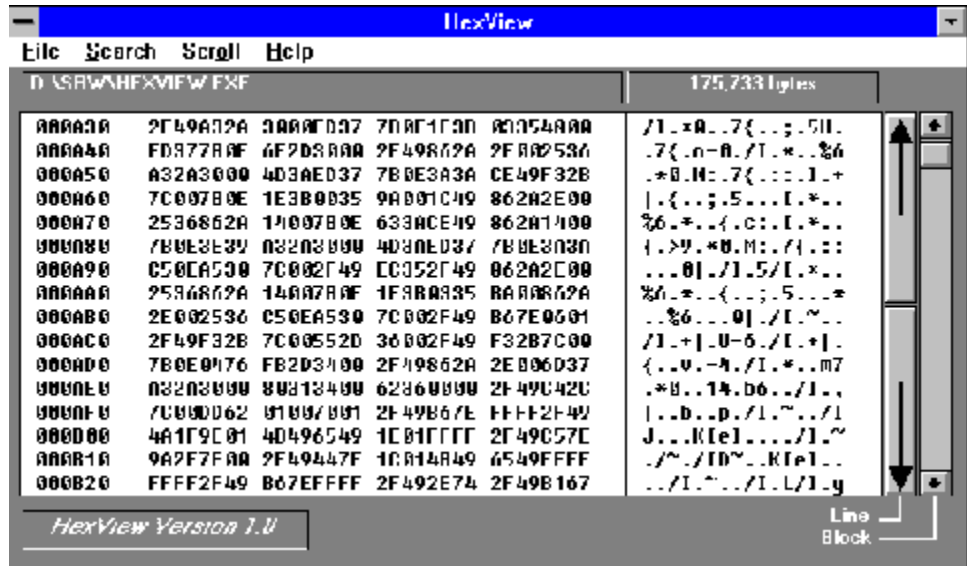
StickEm

**Metrix** is a Metric conversion program for IBM PC's and compatible. The program offers quick access to the most common Metric to U.S. and U.S. to Metric conversions in addition to a search facility that utilizes a user modifiable reference file containing both common and lesser known items. As shipped, the reference table alone contains over 1200 conversion items. Additional features include a pop-up calculator, cut and paste, drag and drop, printing, and extensive online help. Metrix is available in both DOS and Windows versions. The DOS version can run either standalone or as a removable TSR program occupying only 56K of conventional or upper memory. DOS version 3.0 and/or Windows version 3.1 or above are required.



**Metrix**

**Hexview** is a requirement for anyone who needs to know the internal structure and content of any type of file. Hexview shows you the hexadecimal and character representation side-by-side of any file you select. After opening a file by using either the traditional file open dialog or dragging a file to the minimized Hexview icon, you can view, print any part of the file, scroll back and forth manually or with the AutoScroll feature, and search for any hex or character string. Online help is also available.



Hexview



**Order Form**

**F S A   P R O D U C T   O R D E R   F O R M**

Name \_\_\_\_\_

Company \_\_\_\_\_

Address \_\_\_\_\_

City \_\_\_\_\_ State \_\_\_\_\_ Zip \_\_\_\_\_

Phone \_\_\_\_\_ (If we have questions about your order)

Check:	PN 11644	_____ Jigsaw	\$12.00	\$ _____
	PN 11645	_____ King's Corners	\$12.00	\$ _____
	PN 11646	_____ Oh No!	\$12.00	\$ _____
	PN 11647	_____ Tower Solitaire	\$12.00	\$ _____
	PN 11648	_____ StickEm	\$12.00	\$ _____
	PN 11649	_____ Metrix	\$30.00	\$ _____
	PN XXXX	_____ HexView	\$12.00	\$ _____

Order Subtotal ..... \$ \_\_\_\_\_

Minus 10% discount if ordering 2 or more items ..... \$ \_\_\_\_\_

Order Total..... \$ \_\_\_\_\_

Diskette format: (Check one)    \_\_\_\_\_ 3.5"    \_\_\_\_\_ 5.25"

When ordering directly from FSA, the above prices include shipping and handling charges. For orders outside the continental USA, add U.S. \$3.00 per product for shipping. Please enclose cash, check or money order and mail to the following address:

**FSA Inc.  
148 N. Washington Street  
Delaware, Ohio 43015-1725**

To order by **credit card only**, call PsL at (800) 242-4775 or (713) 524-6398 and request each item by its listed product number. These phone numbers are for **ORDERS** only! No techies are available to answer questions. You may also mail credit card orders to PsL at P.O. Box 35705, Houston, TX 77235-5705.

PsL accepts Visa, MasterCard, American Express and Discover cards. There is an additional \$2.00 U.S. and \$3.00 foreign handling fee for credit card orders.

