

## Human Anatomy CD-ROM Help

©1995 Gold Standard Multimedia Inc.

### Contents

The Human Anatomy program divides the body into seven regional units consisting of 44 laboratory dissection procedures outlined as follows:

#### **BACK AND SPINAL CORD**

Dissection Procedures 1 and 2

#### **UPPER EXTREMITIES**

Dissection Procedures 3 to 10

#### **LOWER EXTREMITIES**

Dissection Procedures 11 to 17

#### **THORAX**

Dissection Procedures 18 to 21

#### **HEAD AND NECK**

Dissection Procedures 22 to 34

#### **ABDOMEN**

Dissection Procedures 35 to 40

#### **PELVIS AND PERINEUM**

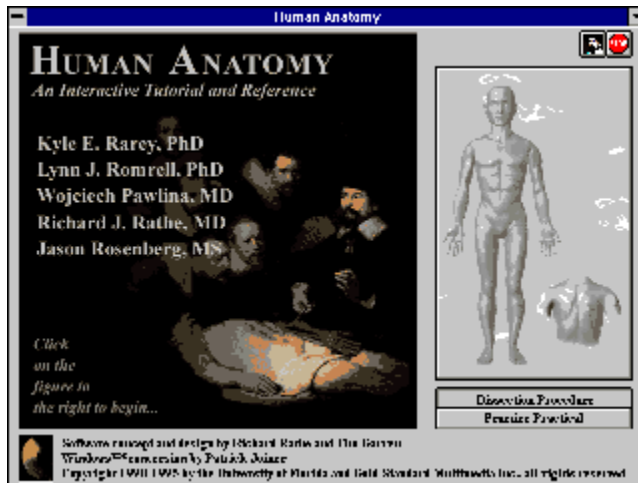
Dissection Procedures 41 to 44

[Accessing laboratory dissection procedures](#)

[Structure of the laboratory dissection procedure](#)

## Title Screen

This is the title screen of Human Anatomy. Click on an object to learn its function.



## **Dissection Procedure button**

Click on this button to jump to the appropriate region when clicking on the figure. This is the default setting.

## **Practice Practical button**

Click on this button to jump to the practice practical for the appropriate region when clicking on the figure.

## **Minimize button**

Click on this button to make Human Anatomy appear as an icon on your desktop.

## **System Menu button**

Double-click on this button to exit the program.

## **Human Anatomy figure**

Click on the figure to go to the corresponding region.

## **Credits button**

Click on this button to see the credits. Click again to restore the screen.



## **Quit button**

Click on this button to quit the program.

## Accessing laboratory dissection procedures

To access the laboratory dissection procedures:

1. Go to the [Human Anatomy title screen](#) and click on the Dissection Procedure button located below the human figure.
2. On the human figure itself, click on an area associated with one of the seven regional units. For example, to review the Upper Extremities, click on one of the figure's upper extremities.

This takes you to the region's title screen, which outlines the laboratory dissection procedures available for study.

## Structure of the laboratory dissection procedure

From the region's title screen, you can access the laboratory dissection procedures by clicking on the laboratory number in the text area to the right of the screen. Notice that this text is colored magenta indicating that it is "hot" text and will take you to another location in the program, in this case, to the first screen in a laboratory dissection procedure.

The first screen in a laboratory dissection procedure is further divided into four basic sections:

- 1) **Overview:** where the objectives of the dissection are identified.
- 2) **Osteology:** where major body landmarks are reviewed.
- 3) **Step-by-step dissection instructions:** listing a sequence of dissection steps which define structures that are to be identified and direct how and where to cut and reflect given structures.
- 4) **Summary terms:** listing the structures relevant to the laboratory dissection procedure.

## "Hot" text areas

All text that is colored is "hot" and can be clicked on to obtain additional information. The following color scheme has been adopted to indicate the function of hot text:

**MAGENTA:** branches to another location in the program.

**BLUE:** displays additional images or image sequences in the image window to the left of the text area.

**GREEN:** branches to a figure relative to the current discussion.

After clicking on a **blue** hot text item, click on an area of text which does not contain hot (colored) text to redisplay the screen's default image.

After branching to another area of the program by clicking on **magenta** or **green** hot text, click on the bent arrow icon in the [navigation toolbar](#) in the upper right corner of the screen.

## Image window

Without a doubt, one of the most unique and useful features of Human Anatomy is its unprecedented use of over 6,000 images which serve as a guide to the various steps of human dissection.

When most screens first opened, they will display a "default" image in the image window to the left of the text area. This image is relevant to the discussion of the text on the right.

Often there is more than one image relevant to the discussion of the text. In these cases, text pertaining to the other images will be colored blue indicating that it is "hot" text and will display additional images when clicked on.

These additional images can also be obtained by clicking on the forward and backward arrows in the image toolbar just below the image.

Still images and image sequences

## **Still images and image sequences**

Two types of images may be displayed inside the image window: still images and image sequences.

Still images are used to point out specific structures or regions and image sequences are used to illustrate a process such as the reflection of a muscle or the removal of tissue and bone.

Image sequences consist of a series of still images played approximately 1 second apart (speeds may vary depending on the processing speed of your hardware). Image sequences will replay in a loop until the mouse is clicked.

## Image toolbar

The image toolbar is located just below the image window. It consists of three objects:

- A Full Screen button for showing the entire image.

- A "next image" button indicated by the double right arrow, >>.

- A "previous image" button indicated by the double left arrow, <<.

Clicking on the previous or next image button will highlight and display the image for the previous or next blue hot text item respectively.

When the full screen image is displayed it covers 90% of the screen area. Click the mouse once to return the image to the image window.

If a screen has no default image or if there are no additional images indicated by blue hot text, one or more of the image toolbar buttons may become dimmed indicating its function is not relevant to that particular screen.

## **Orientation icon**

On many of the close up images, the orientation of the cadaver is not always apparent. For this reason, orientation icons have been added to accompany the images. Orientation icons are located on the bottom left area of the screen, just below the image. The orientation icon is a three-dimensional rendered drawing of the human figure positioned appropriately to the orientation of the cadaver in the image window. A shaded box is usually present on the orientation icon indicating the area of the body that is being displayed.



## Navigation toolbar

The navigation toolbar has been added to each screen to make moving throughout the program fast and easy.

With the exception of the [practice practical](#) screens, all screens have the following eight navigational buttons located on a double row tool bar in the upper right hand corner of the screen:

**Title Screen:** returns to the program's title screen.

**Previous Screen:** go to the previous screen.

**Next Screen:** go to the next screen .

**Back:** move up one level in the outline.\*

**Personalized Notes:** creates a [note](#) in the note file.

**Quiz:** go to the region's practice practical.

**Find:** search the region for specified text.

**Quit:** exit the program.

\* The back feature will also return you to the dissection procedure from a figure screen or to the practice practical from a review of the dissection procedure.

## **Personalized notes**

Personalized notes are written to a tab-delimited text file which is created and stored in a directory called "Notes" on your hard drive.

One text file is created for each day and individual notes are stored in them in date and time order with the screen title indicated for convenient reference.

Note: Opening a note file with a spreadsheet program will automatically tabulate the data for you.

## References to commonly used atlases

The notes and references box is located at the bottom middle of the screen just below the image tool bar.

To assist in correlating the steps of the dissection to figures in commonly used atlases, references have been provided in the notes and references box.

The texts referenced are:

Grant's Atlas of Anatomy, 9th edition; by figure number.

Netter's Atlas of Human Anatomy, 1st edition; by plate number.

Rohen and Yokochi's Color Atlas of Anatomy, 3rd edition; by page number.

The notes and references area is also used to provide special instructions and hints to questions in the practice practical exercises.

## Figures

To further aid in the identification of anatomic structures, over 250 medical illustrations are included and referenced throughout the text of the dissection.

Access to the figures is accomplished via hot text links in the text area of the dissection procedures. Hot text that branches to a figure is indicated in green text.

In the figure diagrams you will find that most structures will be colored blue indicating a cadavaric image associated with the structure is also available. Click on the blue colored text of a structure to see the image.

All navigational features of the dissector are also available in the figure screens. Clicking on the next and previous screen buttons will take you to the next and previous figures within the region of study.

To return to the dissection procedure, click on the "back" arrow icon in the navigation tool bar.

Note: The drawing of the upper and lower extremities are of the right side of the body, except for the drawings of the forearm and hand (dissection procedures 7 to 9). The drawing of the later procedures are of the left side. This was done so that the illustrations correlated as much as possible with the still images. In some cases, still images form the opposite side of the body to that of the drawing are shown but the orientation icons are always available to eliminate confusion.

## Practice practical exercises

The practice practical is divided into the same seven regions of the body as is the dissection procedure plus Osteology.

To begin the practice practical, go to the Human Anatomy title screen and clicking on the Practice Practical button located below the human figure.

As with the dissection procedures, click on the appropriate region of the body to enter the title screen for the practice practical exercise.

Alternatively, you can enter the practice practical from any point in the dissection procedure by clicking on the navigation tool marked with a "Q".

From the practice practical title screen, you can personalize your practice practical by selecting regions or chapters (or regions within chapters) from which to build your exam. In the text area is a scrolling list of available items from which to choose. Click on one or more of these items to add the item to the list of questions to be asked.

After selecting your categories from the available list, click the START button in the navigation tool bar in the top right corner of the screen. You will be informed as to the number of items and categories you have selected. You will also be given the option of selecting the correct answer from a list of possible structures or viewing the images in flash card fashion without a list of answers.

During the practical, a series of images pointing out specific structures will be displayed at random in the image window. You will be asked to identify the indicated structure(s). Where applicable, a hint will be provided in the notes and references box in the bottom middle of the screen.

After answering a question, click on the next arrow button to proceed to the next question or, as a shortcut, you can click on the white part of the text area to proceed to the next question. You may continue until all questions in the selected categories have been asked or press the "back" arrow at any time to end the practical.

[Selecting answers from a list](#)  
[Flash cards](#)  
[Reviewing the dissection procedure](#)

## Selecting answers from a list

If you choose the option of selecting the correct answer from a list of possible structures, the program will track the questions you answer correctly or incorrectly and tabulate your score when the practical is ended.

When the practical has ended, you will be given the option to repeat the practical with only the questions you have missed or return to the practice practical title screen.

## Flash cards

If you choose not to select answers from a list, images will be called up at random with the correct answer hidden. Click the mouse to display the correct answer. Scores are not kept when taking the practical in flash card mode.

## **Reviewing the dissection procedure**

After revealing an answer to a quiz question, you will often be given an option to go to the area in the dissection procedure relative to the question being asked. Click on the magenta text to go to the dissection procedure to review the material relative to the question. Your place in the practical exam will be kept and you can return to it by clicking on the "back" icon in navigation tool bar.



